



00062467

DRILLING PLAN

PROSPECT/FIELD	Buckskin Mesa Unit	COUNTY	Rio Blanco	STATE	Colorado
OWNERS	Meridian Oil Inc.				
WELL NO.	13-23 Buckskin Mesa Unit	LEASE	Meridian Oil, Inc.		
LOCATION	NE NW SW Sec. 23-T1N-R95W (2600' FSL, 725' FWL)				
EST. T.D.	1,650' TVD	GROUND ELEV.	6,250' (est)		

PROGNOSIS: Based on 6,260' KB(est)

MARKER	DEPTH	HYDC	DATUM
Wasatch	Surface	0&G	
TD	1,650'		4,610'

LOGS: Type Interval

DIL/GR/FDC/CNL 350' - TD

DEVIATION:

3 deg max, 1 deg/100'; every 300' 0' - 350'

5 deg max, 1 deg/100', every 500' 350' - TD

DST'S:

None Planned

CORES:

None Planned

SAMPLES:

30' from 350' to TD

Geologist on 350' to TD

BOP:

7-1/16", 3000 psi Pipe or Annular, 350' - TD

7" Orbit Valve, 7-1/16" Rotating Head

Surface Formation Wasatch

Max. Anticipated BHP: .40 - .42 psi/ft

MUD:	Interval	Type	WT	Vis	WL	Remarks
	0' - 350'	Water/Gel-Lime Sweep	8.8 +/-	28 +/-	NC	
	350' - TD	Air or Air/Mist				

CASING:	Size	Wt ppf	Hole	Depth	Cement	WOC	Remarks
Surface:	7"	20	8-3/4"	350'	100 sx	8 hrs	
Production:	4-1/2"	9.5	6-1/8"	TD	150 sx		

PROBABLE PLUGS, IF REQ'D: Per COGC requirements.

OTHER:

Water well depths within a one mile radius: 49', 20'

1. Well will not be shut-in prior to killing during drilling of production hole.
2. Well will not be completed open hole.
3. Kill fluid will be on location with sufficient material for weighting up min. of 2 ppg.
4. If kill operation is necessary, choke pressure will be less than .6 psi p/ft. at surface casing shoe.

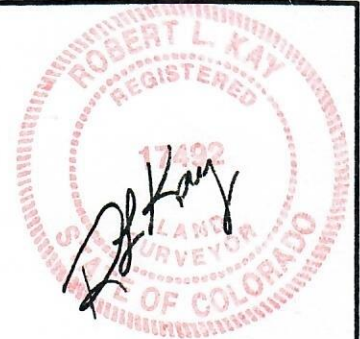
SURVEYS:

Prep By: GAO/cam  Date: 9/8/94 Revised Doc: 1323PPDP

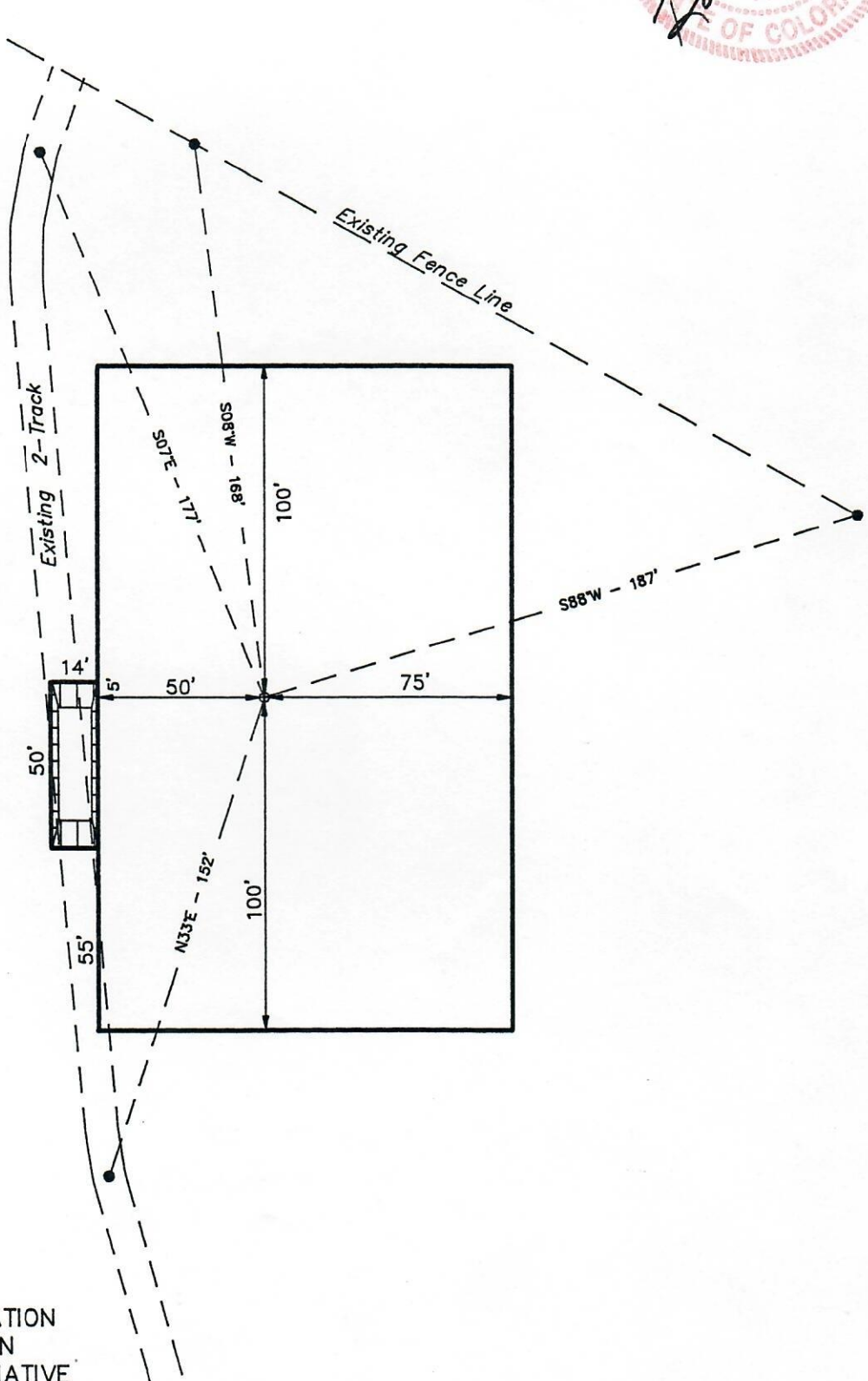
MERIDIAN OIL, INC.

ADDENDUM TO LEGAL PLAT

#13-23 BUCKSKIN MESA UNIT
SECTION 23, T1N, R95W, 6th P.M.
2600' FSL 725' FWL



SCALE: 1" = 50'
DATE: 8-31-94
DRAWN BY: T.D.H.

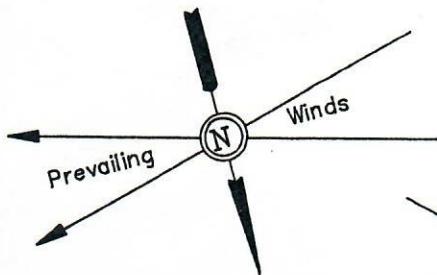
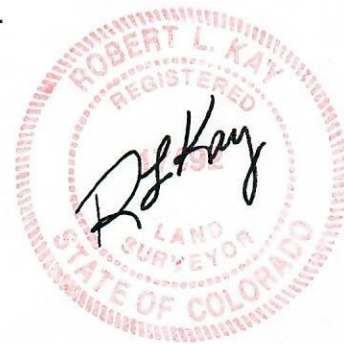


SURFACE USE OF LOCATION
IS GRAZING. VEGETATION
CONSISTS MAINLY OF NATIVE
GRASSES & SAGEBRUSH.

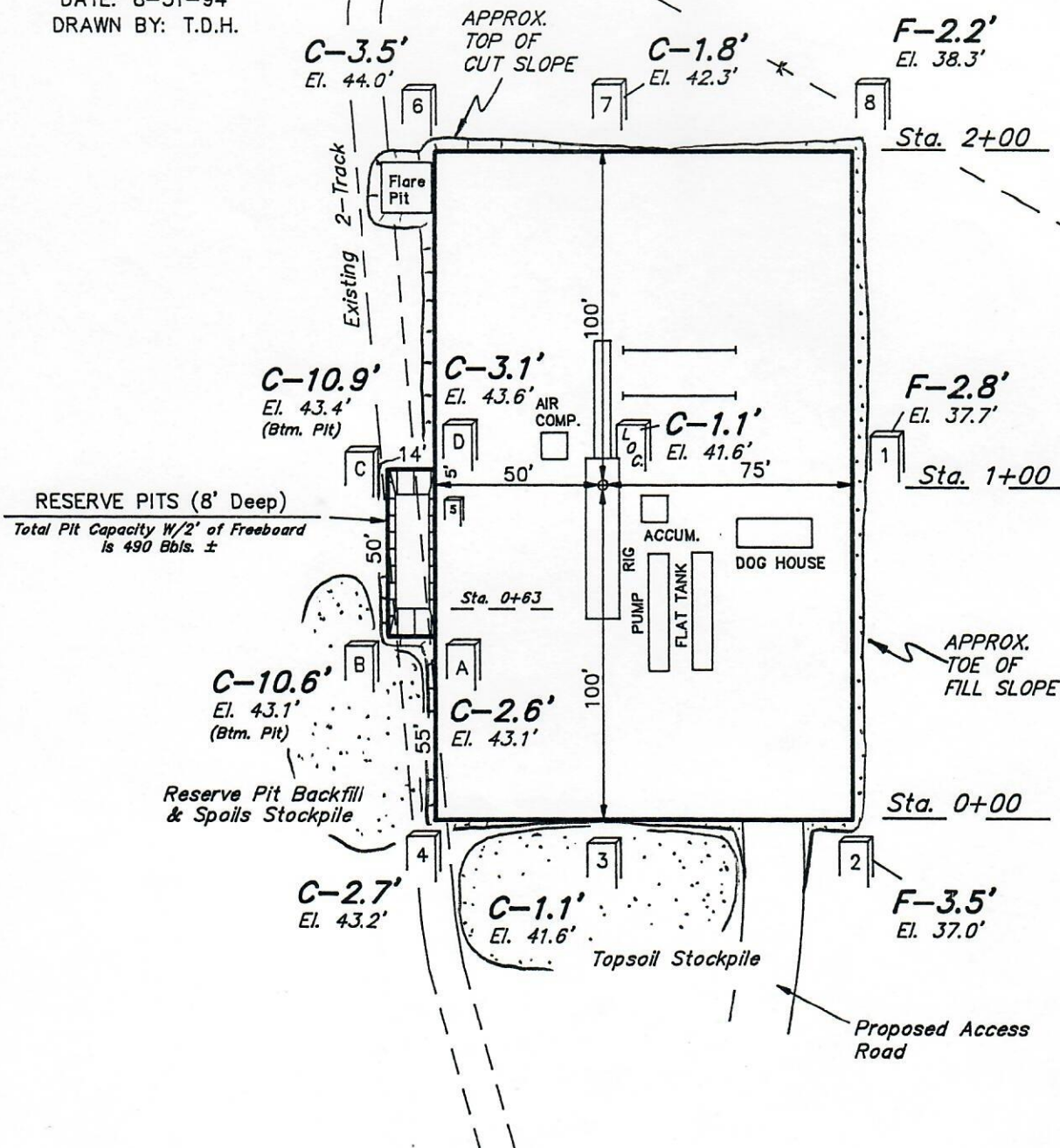
MERIDIAN OIL, INC.

LOCATION LAYOUT FOR

#13-23 BUCKSKIN MESA UNIT
SECTION 23, T1N, R95W, 6th P.M.
2600' FSL 725' FWL



SCALE: 1" = 50'
DATE: 8-31-94
DRAWN BY: T.D.H.



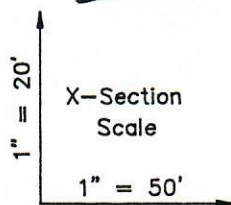
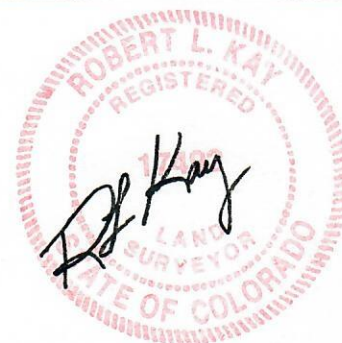
Elev. Ungraded Ground at Location Stake = 6241.6'
Elev. Graded Ground at Location Stake = 6240.5'

UINTAH ENGINEERING & LAND SURVEYING
85 So. 200 East • Vernal, Utah 84078 • (801) 789-1017

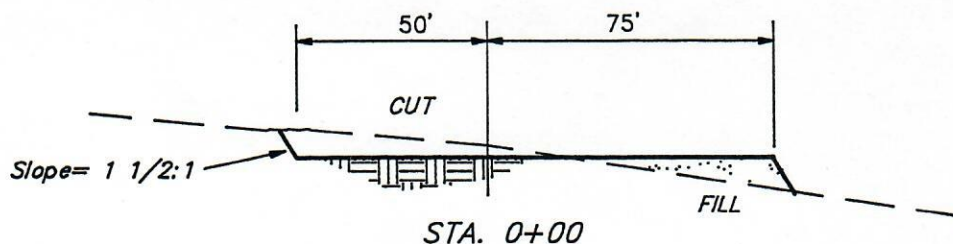
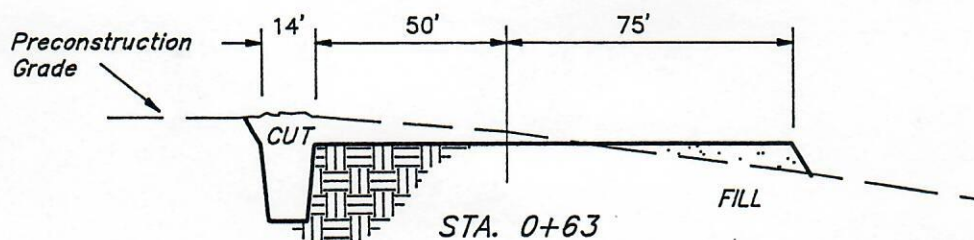
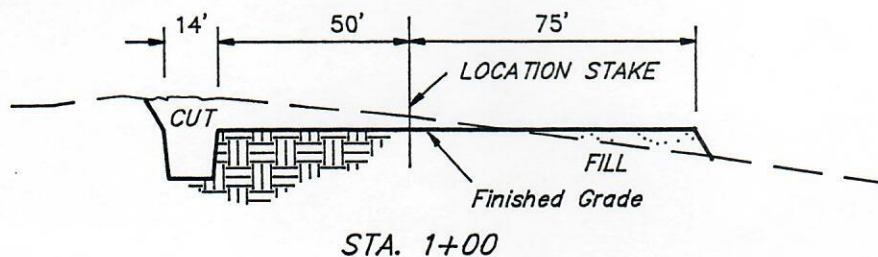
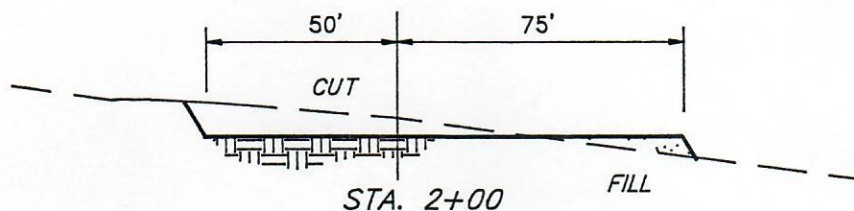
MERIDIAN OIL, INC.

TYPICAL CROSS SECTIONS FOR

#13-23 BUCKSKIN MESA UNIT
SECTION 23, T1N, R95W, 6th P.M.
2600' FSL 725' FWL



DATE: 8-31-94
DRAWN BY: T.D.H.



APPROXIMATE YARDAGES

CUT		
(6") Topsoil Stripping	=	470 Cu. Yds.
Remaining Location	=	950 Cu. Yds.
TOTAL CUT	=	1,420 CU.YDS.
FILL	=	830 CU.YDS.

EXCESS MATERIAL AFTER 5% COMPACTION	=	550 Cu. Yds.
Topsoil & Pit Backfill (1/2 Pit Vol.)	=	550 Cu. Yds.
EXCESS UNBALANCE (After Rehabilitation)	=	0 Cu. Yds.

UINTAH ENGINEERING & LAND SURVEYING
85 So. 200 East * Vernal, Utah 84078 * (801) 789-1017