



DUAL INDUCTION

CompanyDesert Eagle Operating WellRed Rocks #1-14 Field CountyLas Animas StateColorado	Company Desert Eagle Operating		
	Well Red Rocks #1-14		
	Field		
	County Las Animas	State Colorado	
Location:		API #: 05-071-09928-00-00	Other Services
		NE NW	
		674 FNL & 2341 FWL	SWN/CDL
SEC 1 TWP 30S RGE 55W			
Permanent Datum	Ground Level	Elevation 5499	Elevation
Log Measured From	Ground Level		K.B.
Drilling Measured From	Ground Level		D.F.
			G.L. 5499
Date	10/27/2023		
Run Number	One		
Depth Driller	1110		
Depth Logger	1107		
Bottom Logged Interval	1106		
Top Log Interval	00		
Casing Driller	9.625 @ 1012		
Casing Logger	1013		
Bit Size	8.75		
Type Fluid in Hole	Air		
Salinity,ppm CL			
Density / Viscosity			
pH / Fluid Loss			
Source of Sample	Flowline		
Rm @ Meas. Temp	@		
Rmf @ Meas. Temp	@		
Rmc @ Meas. Temp	@		
Source of Rmf / Rmc	Charts		
Rm @ BHT	@		
Operating Rig Time	1.5 Hour		
Max Rec. Temp. F			
Equipment Number	P-24		
Location	Hays		
Recorded By	T. Martin		
Witnessed By	Brandon Parks		

<<< Fold Here >>>

All interpretations are opinions based on inferences from electrical or other measurements and Midwest Wireline LLC cannot and does not guarantee the accuracy or correctness of any interpretation, and Midwest Wireline LLC will not be liable or responsible for any loss, costs, damages, or expenses incurred or sustained by anyone resulting from any interpretation made by any of our officers, agents or employees.

Comments

N/A DENOTES NOT AVAILABLE OR NON-APPLICABLE.

Log Measured From: Ground Level 0 Ft. Above Permanent Datum

THANK YOU FOR USING MIDWEST WIRELINE LLC
785-625-3858

Your Midwest Wireline Crew	This Log Record Was Witnessed By
Engineer: T. Martin	Primary Witness: Brandon Parks
Operator:	Secondary Witness:
Operator:	Secondary Witness:
Operator:	Secondary Witness:

Log Variables

DatabaseC:\ProgramData\Warrior\Data\desert eagle red rocks #1-14.db
Dataset field/well/DIL/pass2.1/_vars_

Top - Bottom

BOREID in 8.75	BOTTEMP degF 100	CASEOD in 7	CASETHCK in 0	PERFS No	SNDERR mmho/m 5	SNDERRM mmho/m 3	SPSHIFT mV 0
SRFTEMP degF 50	TDEPTH ft 1007						

Variable Description

BOREID : Borehole I.D.
BOTTEMP : Bottom Hole Temperature
CASEOD : Casing O.D.
CASETHCK : Casing Thickness
PERFS : Perforation Flag

SNDERR : Deep Sonde Error Correction
SNDERRM : Medium Sonde Error Correction
SPSHIFT : S.P. Baseline Offset
SRFTEMP : Surface Temperature
TDEPTH : Total Depth

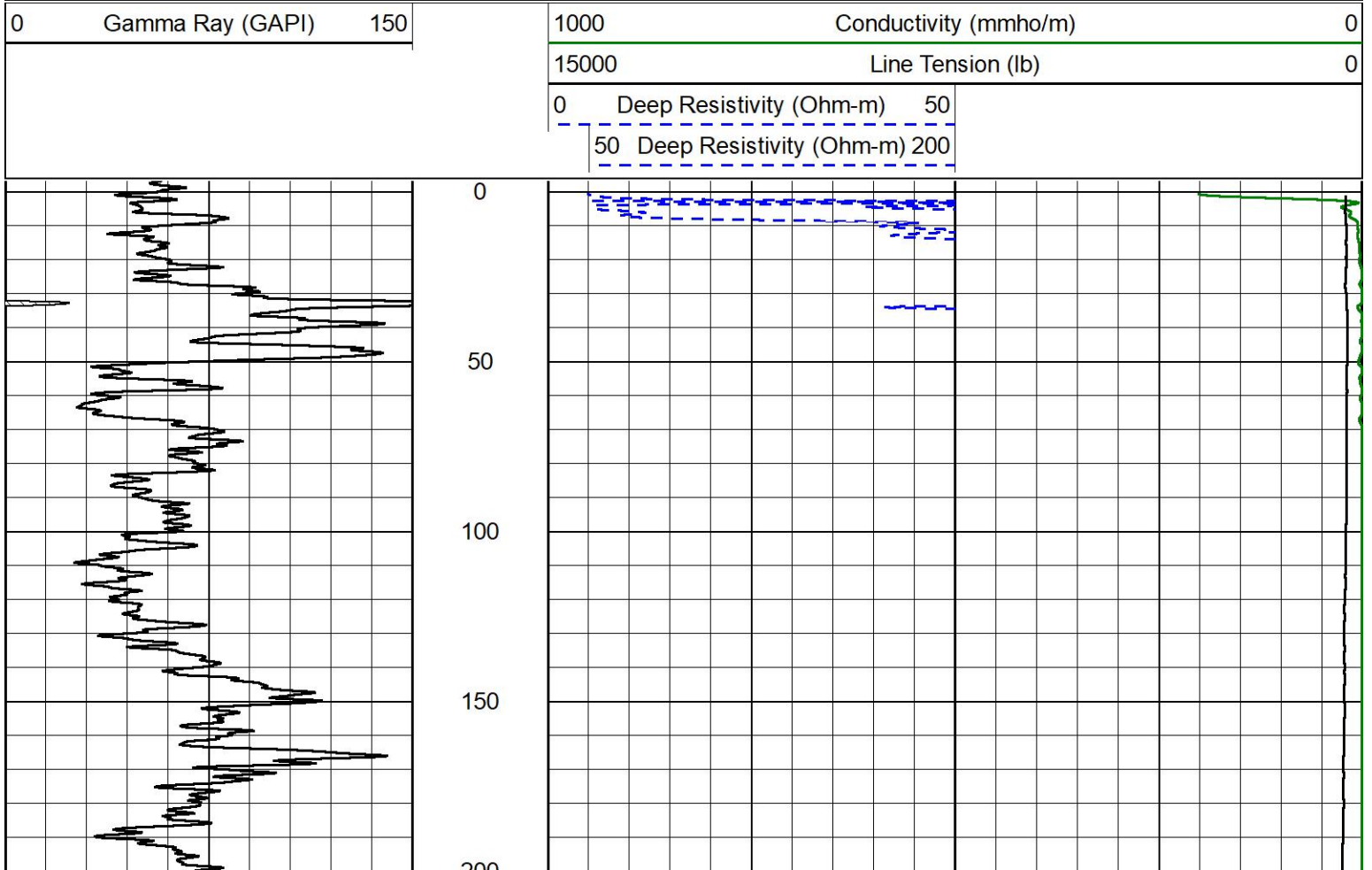


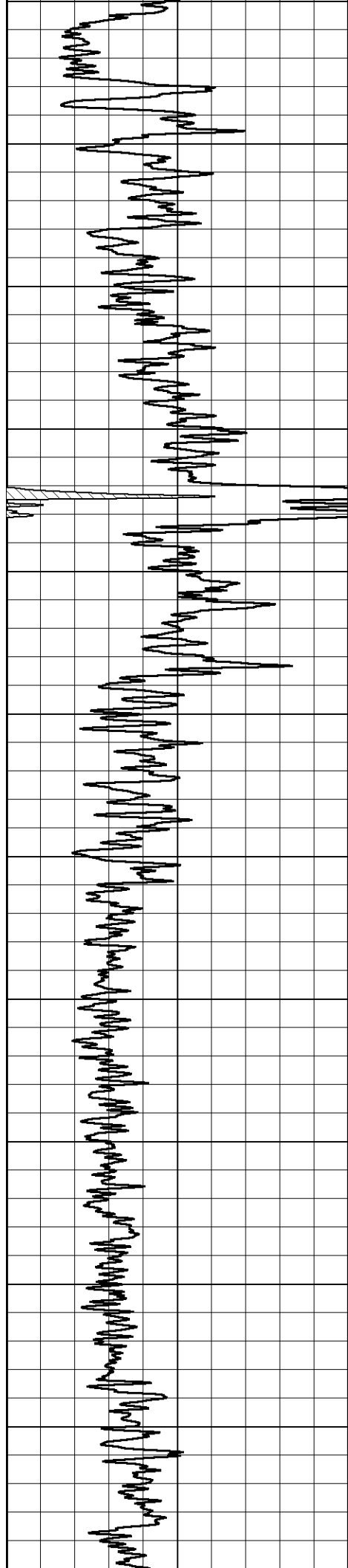
MIDWEST WIRELINE

DETAIL SECTION

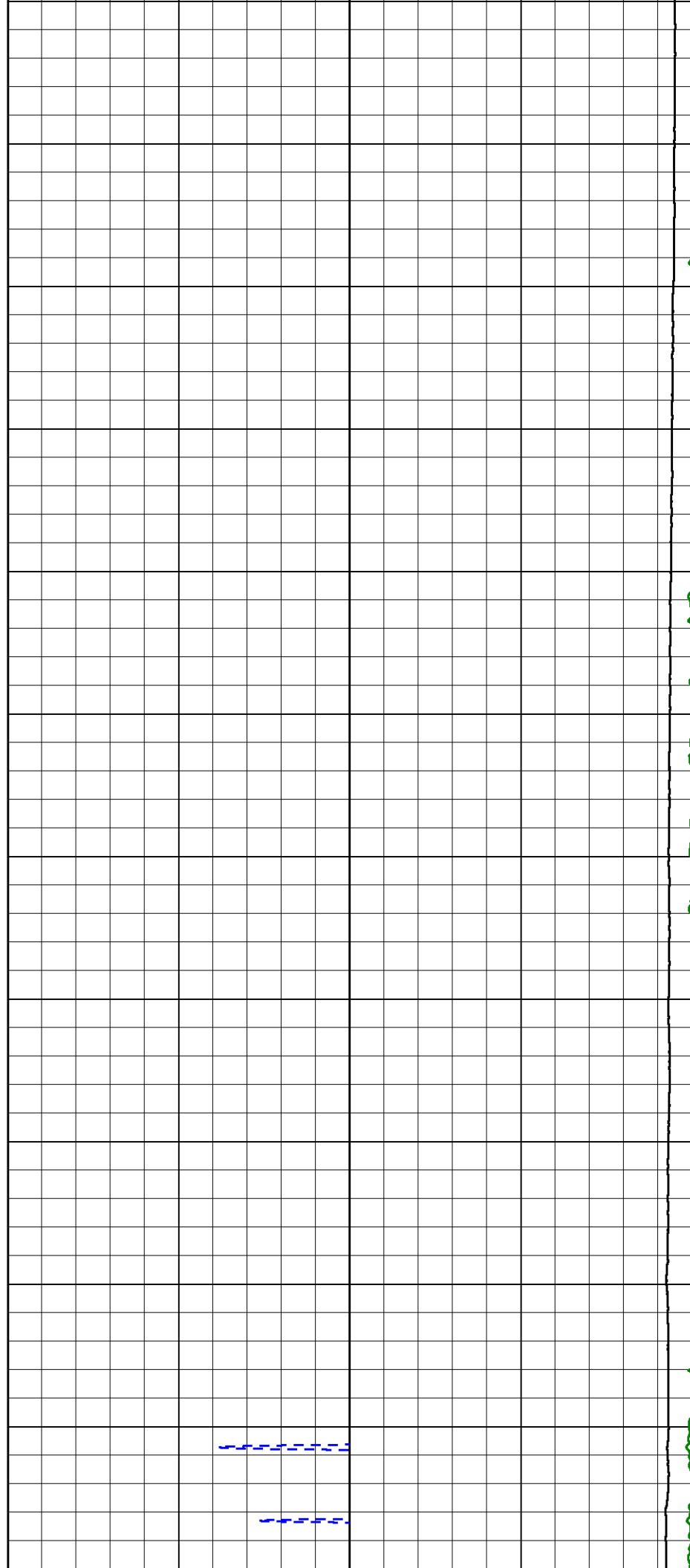
MAIN PASS

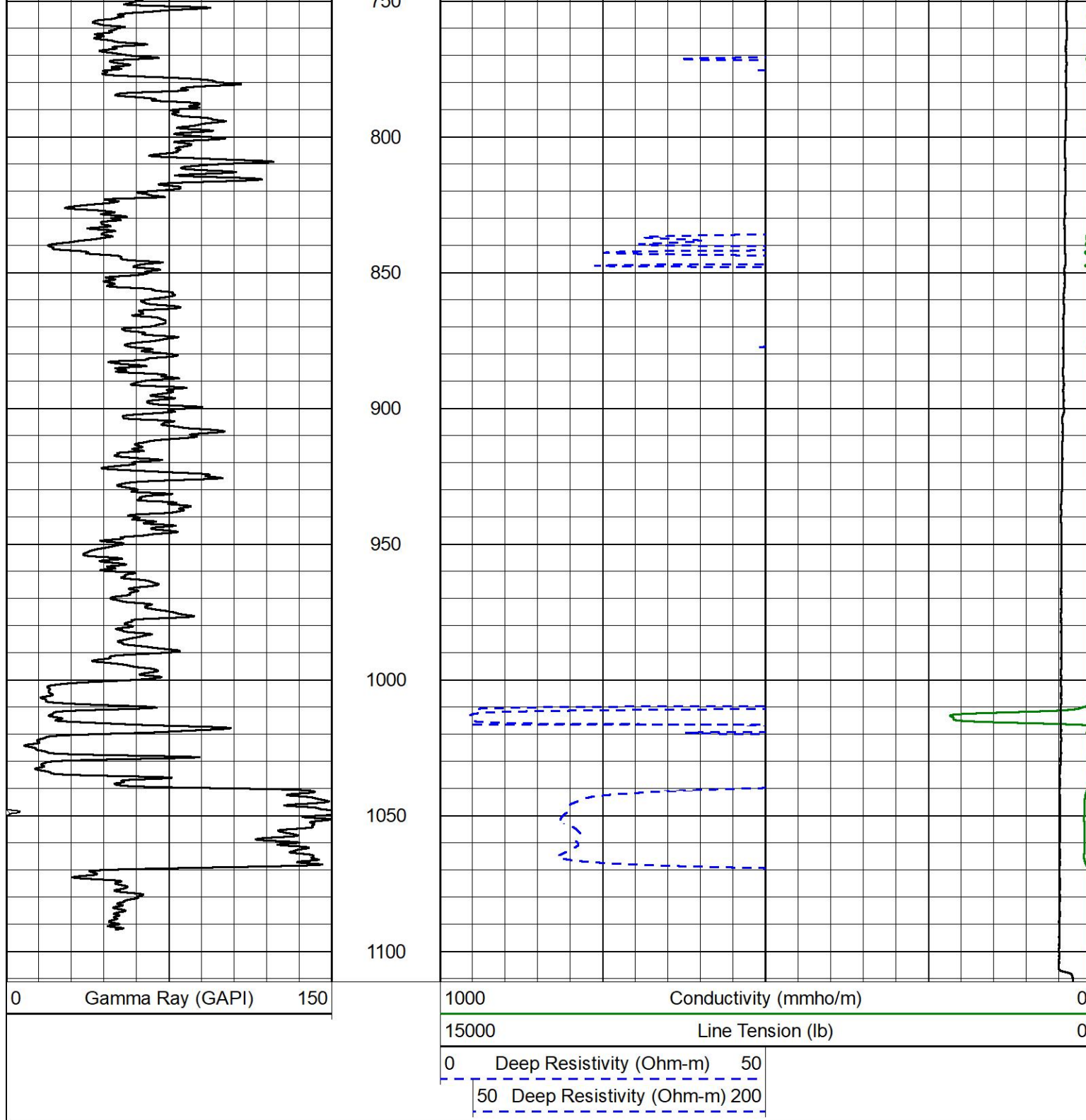
Database File desert eagle red rocks #1-14.db
Dataset Pathname DIL/pass2.1
Presentation Format _dil2in
Dataset Creation Fri Oct 27 15:46:03 2023
Charted by Depth in Feet scaled 1:600





200
250
300
350
400
450
500
550
600
650
700
750





DETAIL SECTION

MAIN PASS

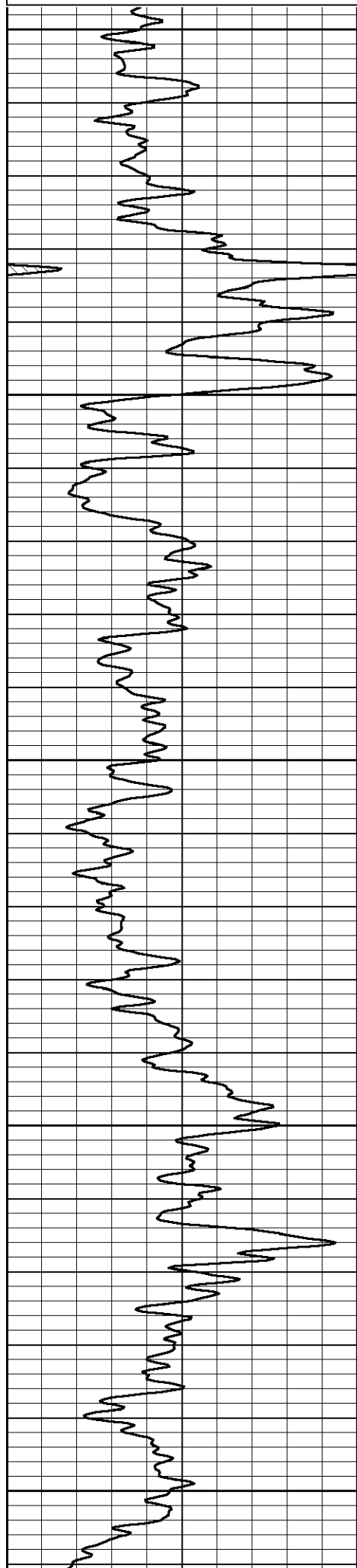
Database File desert eagle red rocks #1-14.db
 Dataset Pathname DIL/pass2.1
 Presentation Format _dil
 Dataset Creation Fri Oct 27 15:46:03 2023
 Charted by Depth in Feet scaled 1:240



10000

Line Tension (lb)

0



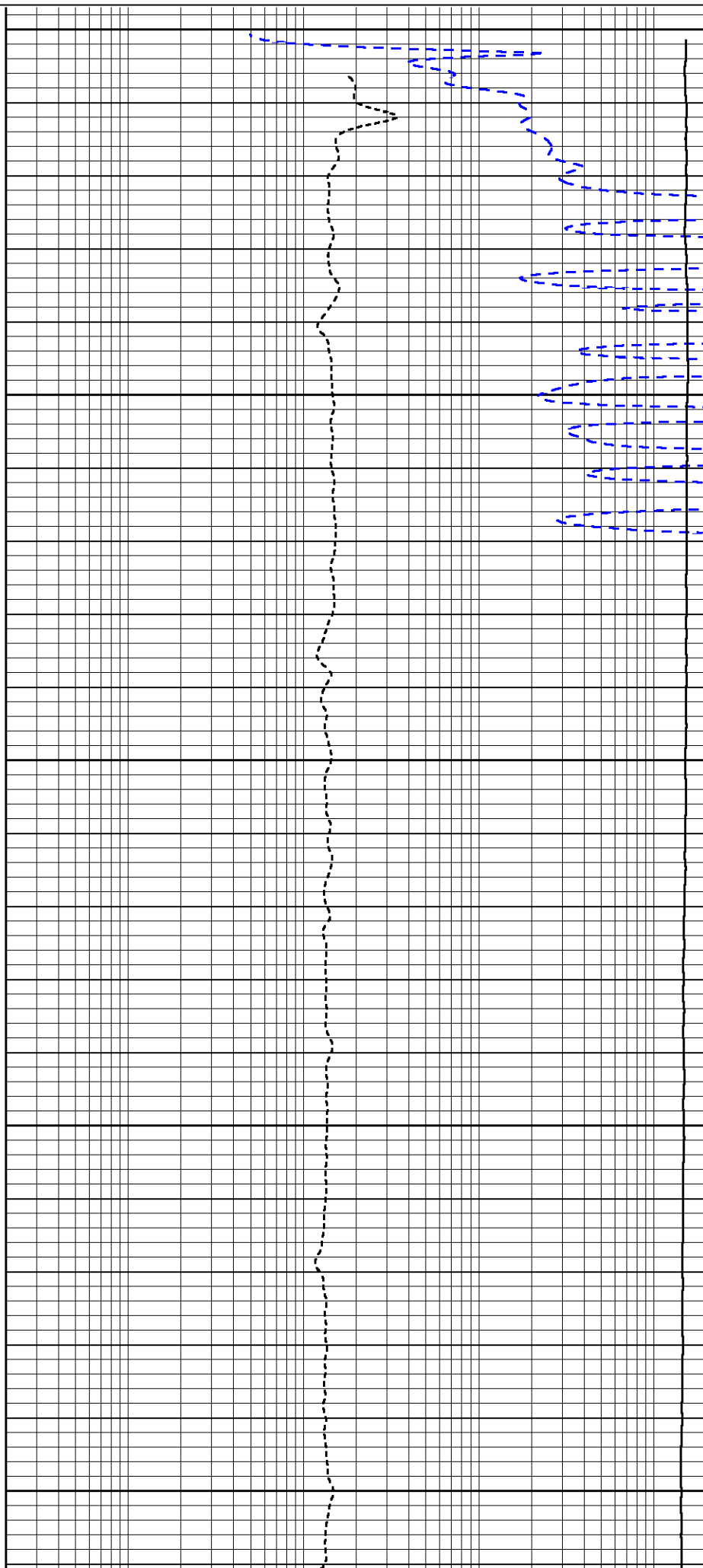
0

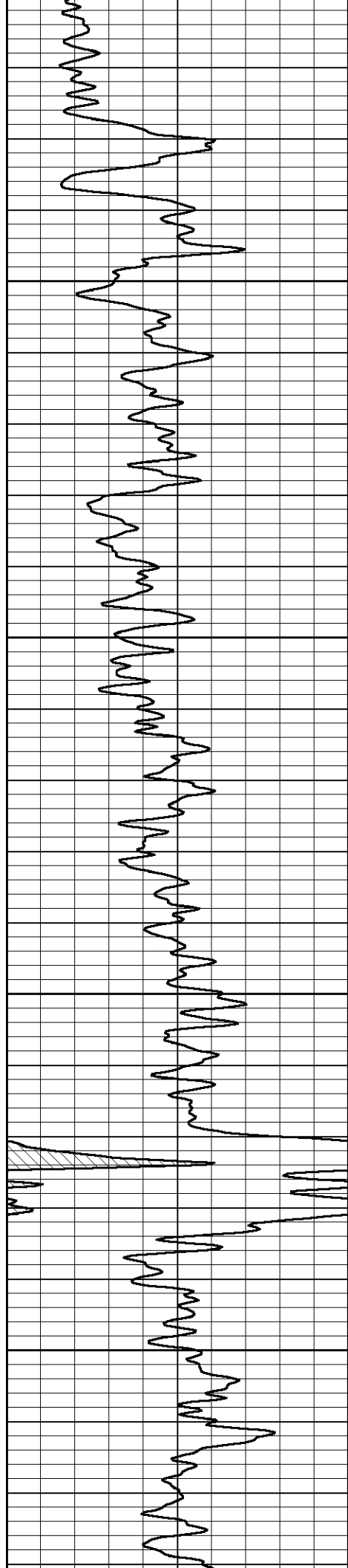
50

100

150

200



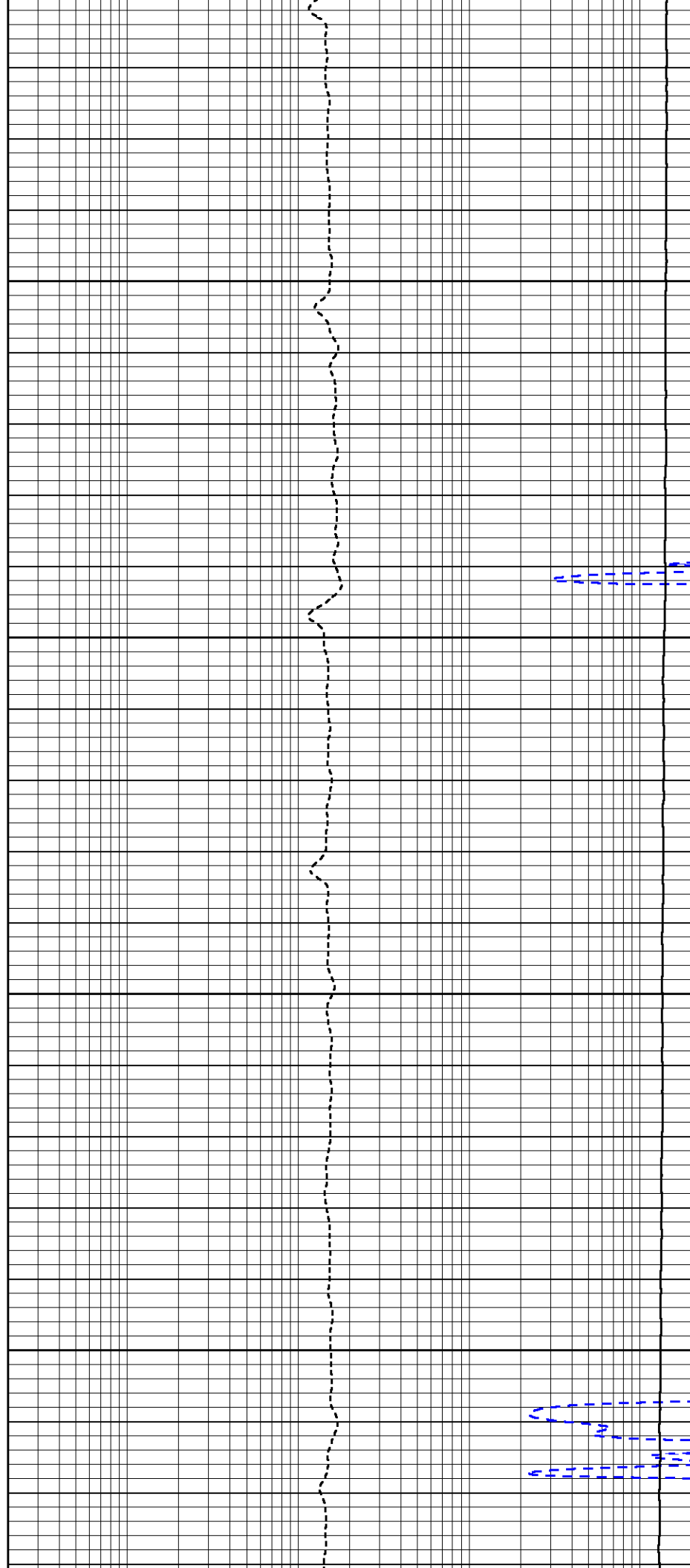


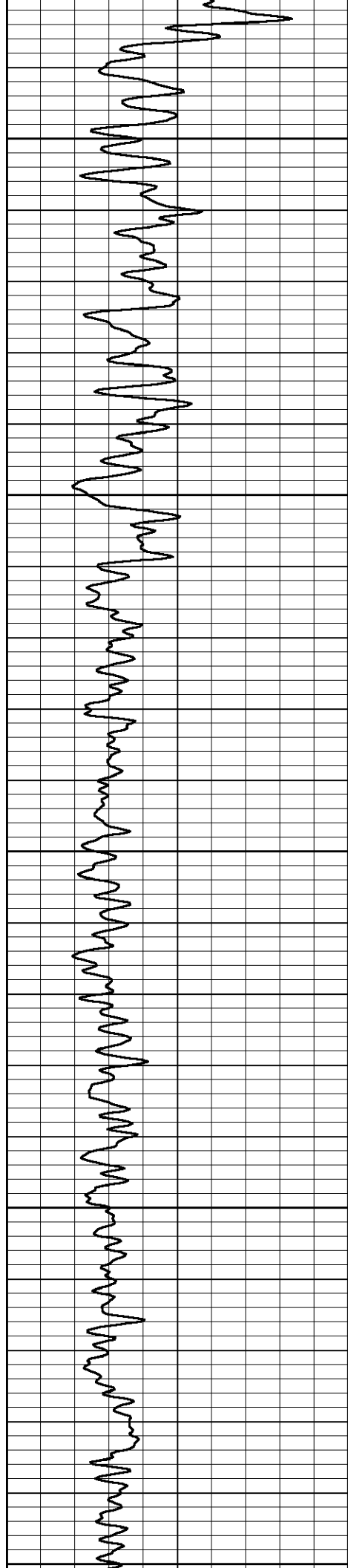
250

300

350

400





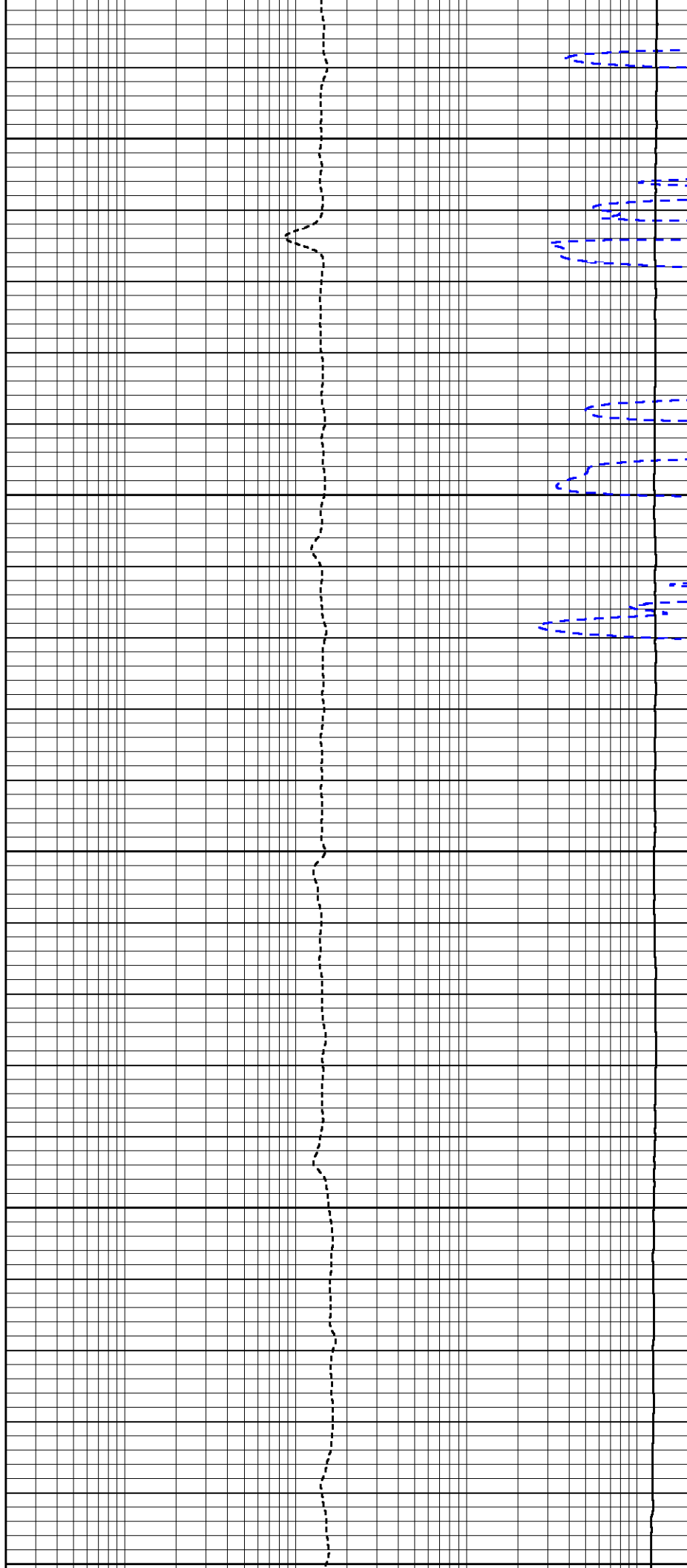
450

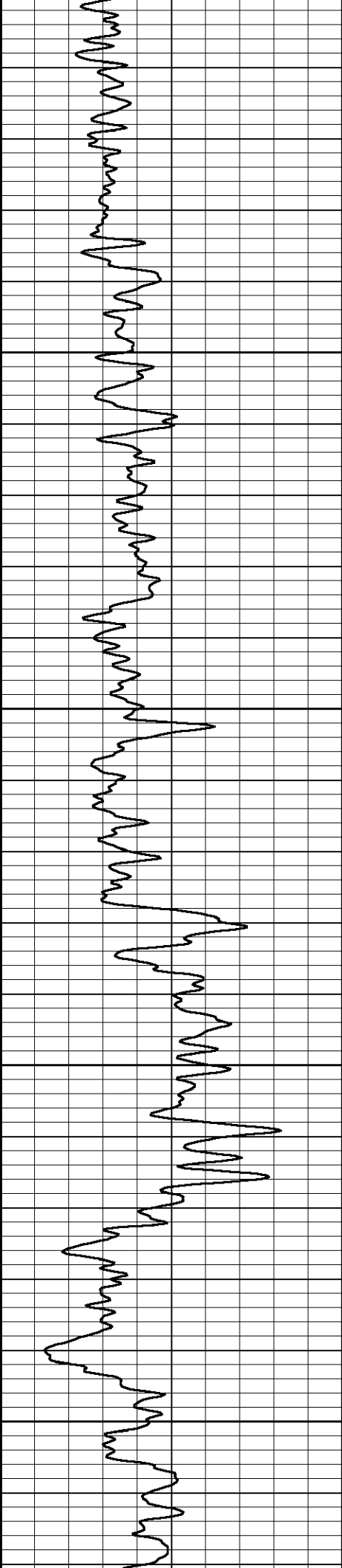
500

550

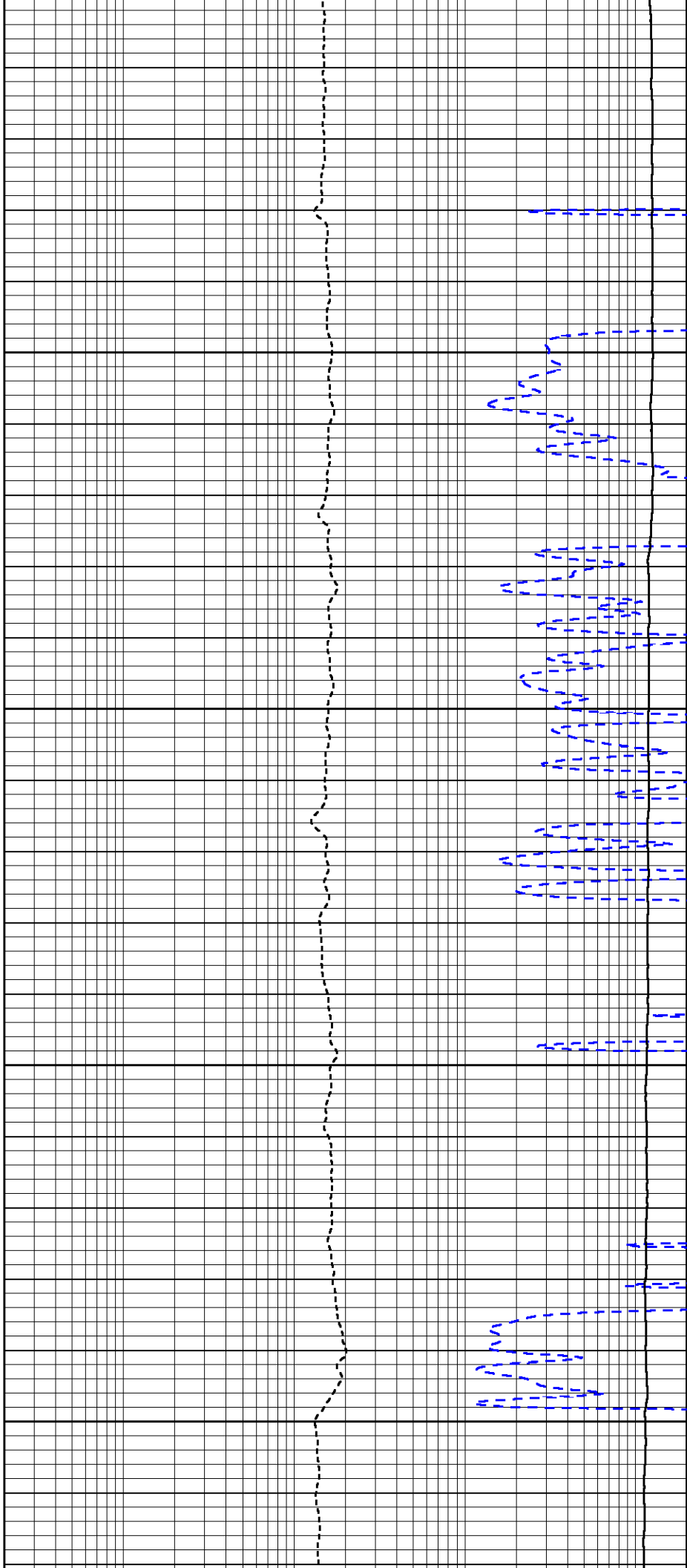
600

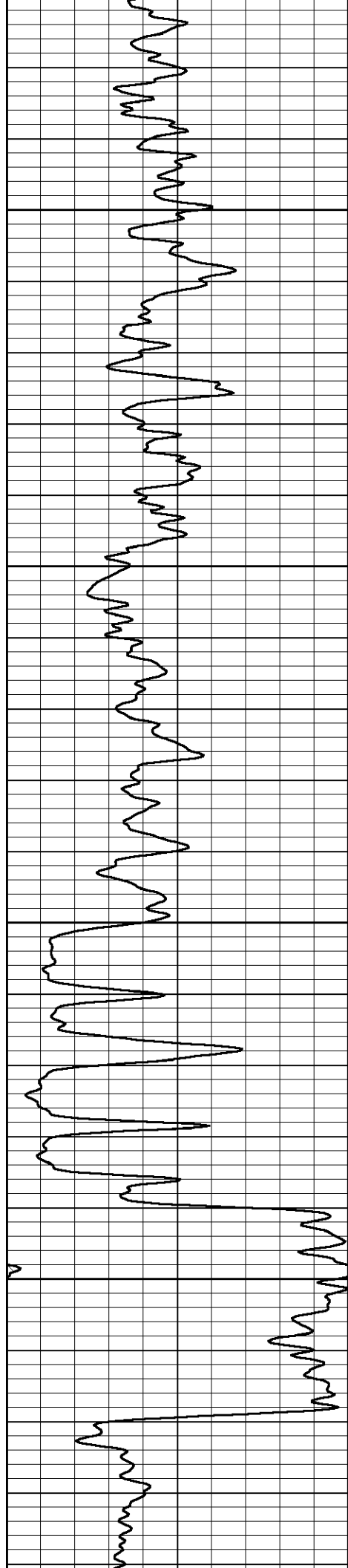
650





800
700
750
800
850



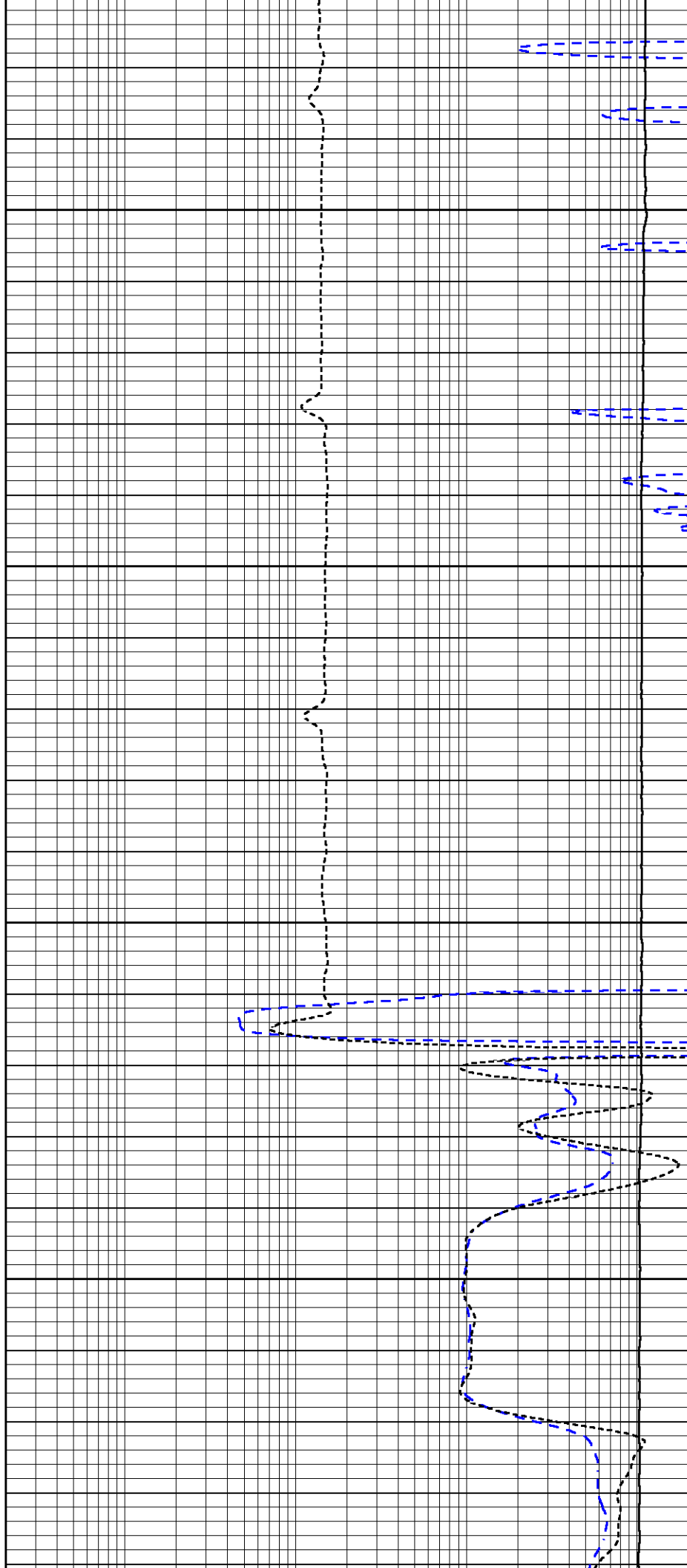


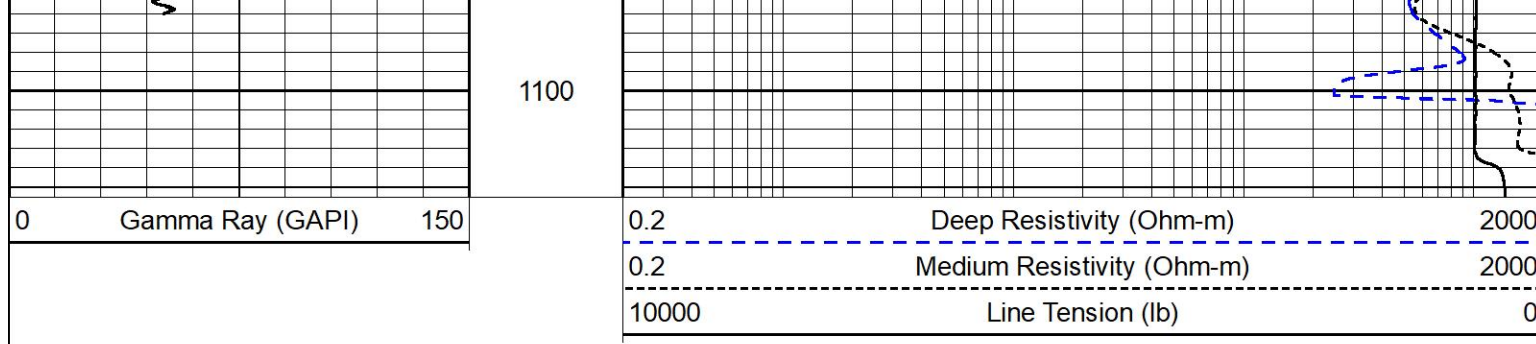
900

950

1000

1050





Calibration Report	
Database File	desert eagle red rocks #1-14.db
Dataset Pathname	DIL/pass2.1
Dataset Creation	Fri Oct 27 15:46:03 2023

Dual Induction Calibration Report	
Serial-Model:	502 HT-M&W
Surface Cal Performed:	

Readings			References			Results	
Loop:	Air	Loop	Air	Loop		m	b
Deep	83.639	487.104	0.000	255.800	mmho/m	0.454	-35.000
Medium	113.335	1585.690	0.000	255.800	mmho/m	0.340	-14.000

Gamma Ray Calibration Report		
Serial Number:	102	
Tool Model:	M&W	
Performed:	Mon Sep 25 22:02:33 2023	
Calibrator Value:	1.0	GAPI
Background Reading:	0.0	cps
Calibrator Reading:	1.0	cps
Sensitivity:	0.5250	GAPI/cps

 MIDWEST WIRELINE	Company	Desert Eagle Operating
	Well	Red Rocks #1-14
	Field	
	County	Las Animas
	State	Colorado