



Terra Energy Partners, LLC

SURFACE POST JOB REPORT

Leverich WMC 314-18-793 05-045-24571
S:13 T:7S R:94W Garfield CO

CallSheet #: 88681
Proposal #: 71598



SURFACE Post Job Report

Attention: Mr. Dustin Childers | (936) 524-8828 | dchilders@terraep.com
Terra Energy Partners, LLC
4828 Loop Central Dr., Suite 900 | Houston, TX 77081

Dear Mr. Dustin Childers,

Thank you for the opportunity to provide cementing services on this well. American Cementing strives to achieve complete customer satisfaction. If you have any questions regarding the services or data provided, please contact American Cementing at any time.

Sincerely,

Lyndon Chandarjit

Field Engineer II | (281) 690-3840 | lyndon.chandarjit@americacementing.com

Field Office 28730 US-6, Rifle, CO 81650
Phone: (970) 657-1187

Job Details & Summary

Geometry

Type	Function	OD (in)	ID (in)	Weight (lb/ft)	Thread	Top (ft)	Bottom (ft)	Excess (%)
Casing	Outer	20	19.5	53	n/a	0	80	0
Open Hole	Outer	n/a	13.5	n/a	n/a	80	500	16
Open Hole	Outer	n/a	13.5	n/a	n/a	500	1172	16
Casing	Inner	9.625	8.921	36	n/a	0	1172	0

Equipment / People

Unit Type	Unit	Power Unit	Employee #1
Cement Trailer Float	CTF-280	TRC-115	Lynn Wall
Cement Pump Float	CPF-011	TRH-1522	Jeremy Bradbrook
Light Duty Vehicles	LDV-092		Collin Woronovitch

Timing

Event	Date/Time
ERTS	10/07/2023 23:00
Call Out	10/7/2023 15:35
Depart Facility	10/7/2023 16:00
On Location	10/7/2023 17:00
Rig Up Iron	10/7/2023 20:00
Job Started	10/8/2023 03:00
Job Completed	10/8/2023 05:05
Rig Down Iron	10/8/2023 05:20
Depart Location	10/8/2023 06:30

General Job Information

Metrics	Value
Well Fluid Density	9.2 lb/gal
Well Fluid Type	WBM
Rig Circulation Vol	200 bbls
Rig Circulation Time	0.5 hours
Calculated Displacement	87.3 bbls
Actual Displacement	87 bbls
Total Spacer to Surface	20 bbls
Total CMT to Surface	35 bbls
Well Topped Out	No

Job Details

Metrics	Value
Well Full Prior to Job	Yes
Well Fluid Density Into Well	9.2 lb/gal
Well Fluid Density Out of Well	9.2 lb/gal

Job Details (cont.)

Metrics	Value
BHCT	81 °F
BHST	99 °F

Water Analysis

Metrics	Value	Recommended
Water Source	Upright Rig Tank	
Temperature	55 °F	50-80 °F
pH Level	7	5.5-8.5
Chlorides	140 mg/L	0-3000 mg/L
Total Alkalinity	120	0-1000
Total Hardness	300 mg/L	0-500 mg/L
Carbonates	N/A mg/L	0-100 mg/L
Sulfates	100 mg/L	0-1500 mg/L
Potassium	40 mg/L	0-3000 mg/L
Iron	0 mg/L	0-300 mg/L

Circulation

Lost Circulation Experienced	Losses into Spacer	Losses into Cement	Losses into Displacement
No			

Job Execution Information

Fluid	Product	Function	Density (lb/gal)	Yield (ft ³ /sk)	Water Rq. (gal/sk)	Water Rq. (gal/bbl)	Volume (sks)	Volume (bbl)	Designed Top (ft)
1	Water	Flush	8.34			42.00		20.00	0
2	Lead	Lead	12.30	2.31	13.15		158.00	64.94	0
3	Tail	Tail	12.80	2.03	11.15		186.00	67.35	500
4	Water	DisplacementFinal	8.34			42.00		87.00	0

Job Fluid Details

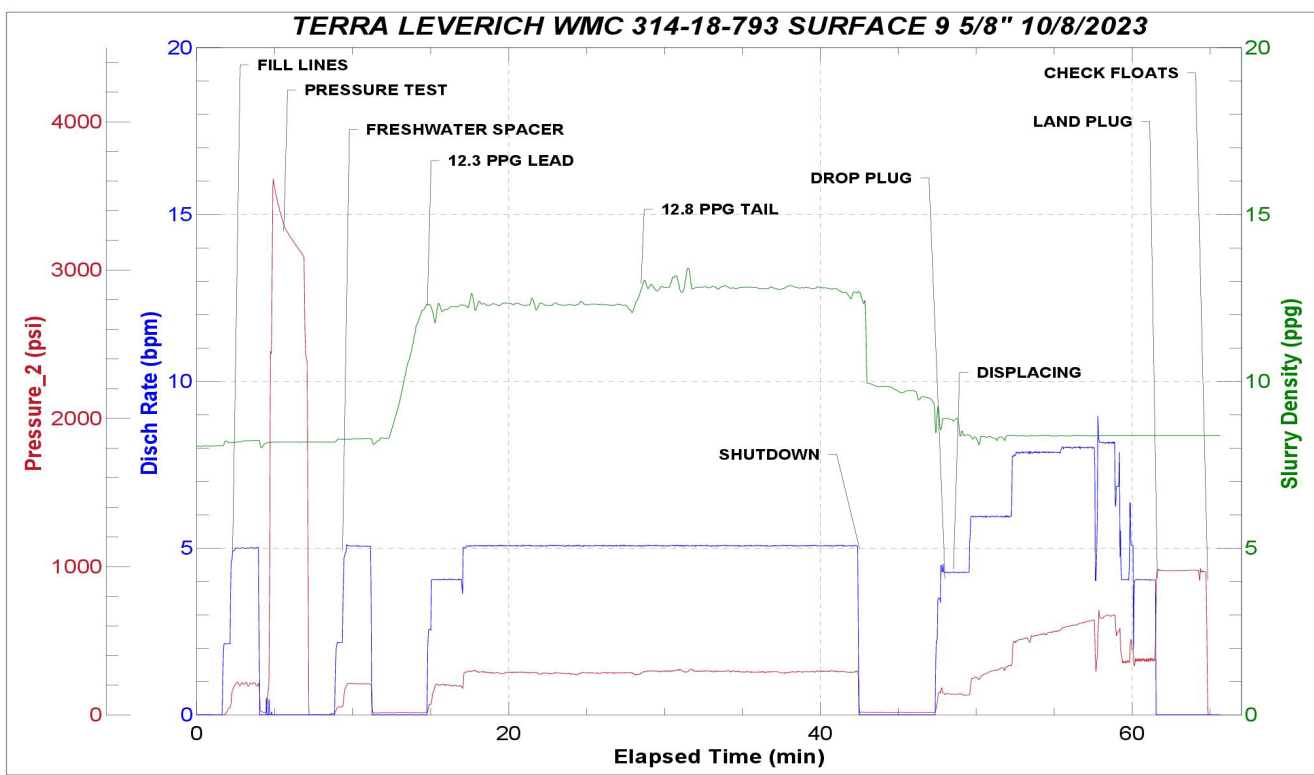
Fluid	Type	Fluid	Product	Function	Conc.	Uom
2	Lead	Lead	ASTM TYPE IL	Cement	100.00	%
2	Lead	Lead	A-10	Accelerator	5.00	%BWOB
2	Lead	Lead	A-2	Accelerator	3.00	lb/sk
2	Lead	Lead	A-7P	Accelerator	2.00	lb/sk
2	Lead	Lead	FP-24	Defoamer	0.30	%BWOB
2	Lead	Lead	IntegraSeal POLI	LostCirculation	0.25	lb/sk
2	Lead	Lead	STATIC FREE	Other	0.01	lb/sk
3	Tail	Tail	ASTM TYPE IL	Cement	100.00	%
3	Tail	Tail	A-10	Accelerator	5.00	%BWOB
3	Tail	Tail	A-2	Accelerator	2.00	lb/sk
3	Tail	Tail	A-7P	Accelerator	2.00	lb/sk
3	Tail	Tail	FP-24	Defoamer	0.30	%BWOB
3	Tail	Tail	IntegraSeal POLI	LostCirculation	0.25	lb/sk
3	Tail	Tail	STATIC FREE	Other	0.01	lb/sk

Job Logs

Line	Event	Date (MM/DD/YY)	Time (HH:MM)	Density (lb/gal)	Pump Rate (bpm)	Pump Volume (bbls)	Pipe Pressure (psi)	Comment
1	Callout	10/7/2023	15:35					CREW CALLED OUT FOR LOCATION TIME OF 23:00 10/8
2	Depart Location	10/7/2023	16:00					CREW DEPARTS RCO YARD FOR RIG LOCATION
3	Arrive On Location	10/7/2023	17:00					CREW AND EQUIPMENT ARRIVED ON LOCATION. RIG IS .STILL DRILLING
4	Rig Up Iron	10/7/2023	20:00					PRE RIG UP MEETING / RIG UP IRON HOSES AND EQUIPMENT. ON STANDBY WAITING FOR CASING TO FINISH BEING RAN. CASING LANDED @ 2:30 RIG CIRCULATED .5 HOUR 200 BBLS
5	Safety Meeting	10/8/2023	03:00					PRE JOB SAFTEY MEETING WITH RIG CREW AND COMPANY MAN. FINISH RIGGING UP HEAD AND FLOOR AFTER SAFETY MEETING.
6	Fill Lines	10/8/2023	03:20	8.34	5	10	221	FILL LINES WITH 10 BBLS OF FRESH WATER
7	Pressure Test Lines	10/8/2023	03:24	8.34	1	1	3643	PRESSURE TEST PUMP AND LINES TO 3000 PSI
8	Other	10/8/2023	03:27	8.34	5	10	258	PUMP 10 BBLS FRESH WATER SPACER FULL RETURNS
9	Pump Lead Cement	10/8/2023	03:34	12.3	4	0	194	BEGIN PUMPING 12.3 PPG, 2.31Y, 13.2MW LEAD CEMENT, WEIGHT VERIFIED BY MUD SCALE
10	Pump Lead Cement	10/8/2023	03:41	12.3	5	30	280	30 BBLS LEAD CEMENT PUMPED
11	Pump Lead Cement	10/8/2023	03:47	12.3	5	35	282	65 BBLS (158 SKS) LEAD CEMENT PUMPED FULL RETURNS
12	Pump Tail Cement	10/8/2023	03:47	12.8	5	0	290	BEGIN PUMPING 12.8 PPG, 2.03Y, 11.1MW TAIL CEMENT, WEIGHT VERIFIED BY MUD SCALE
13	Pump Tail Cement	10/8/2023	03:53	12.8	5	30	293	30 BBLS TAIL CEMENT PUMPED
14	Pump Tail Cement	10/8/2023	04:02	12.8	5	38	291	67 BBLS (186 SKS) TAIL CEMENT PUMPED FULL RETURNS
15	Drop Top Plug	10/8/2023	04:07	8.34	4	0	150	DROP PLUG, WITNESSED BY COMPANY MAN. BEGIN PUMPING FRESH WATER DISPLACEMENT, FULL RETURNS
16	Pump Displacement	10/8/2023	04:11	8.34	6	20	299	20 BBLS DISPLACEMENT PUMPED. SPACER BACK @ 30 BBLS FULL RETURNS
17	Pump Displacement	10/8/2023	04:15	8.34	8	30	590	50 BBLS DISPLACEMENT PUMPED. CEMENT TO SURFACE @ 52 BBLS PUMPED, 35 BBLS TOTAL CEMENT TO SURFACE. MAX LIFT-675 PSI @ 8 BPM
18	Pump Displacement	10/8/2023	04:21	8.34	4	37.3	405	87.3 BBLS (CALCULATED) TOTAL DISPLACEMENT PUMPED
19	Land Plug	10/8/2023	04:21				975	PLUG LANDED. FCP-405 PSI BUMP TO-975 PSI
20	Check Floats	10/8/2023	04:24					BLEED OFF PRESSURE-CHECK FLOATS, FLOATS HELD .75 BBLS BACK
21	Casing Test	10/8/2023	04:30	8.34			1240	1200 PSI 30 MIN CASING TEST
22	Check Floats	10/8/2023	05:05					BLEED OFF PRESSURE-CHECK FLOATS, FLOATS HELD 1 BBLS BACK
23	Rig Down Iron	10/8/2023	05:20					PRE RIG DOWN SAFETY MEETING, RIG DOWN EQUIPMENT, IRON AND HOSES
24	Depart Location	10/8/2023	06:30					CREW DEPARTS LOCATION FOR RCO YARD

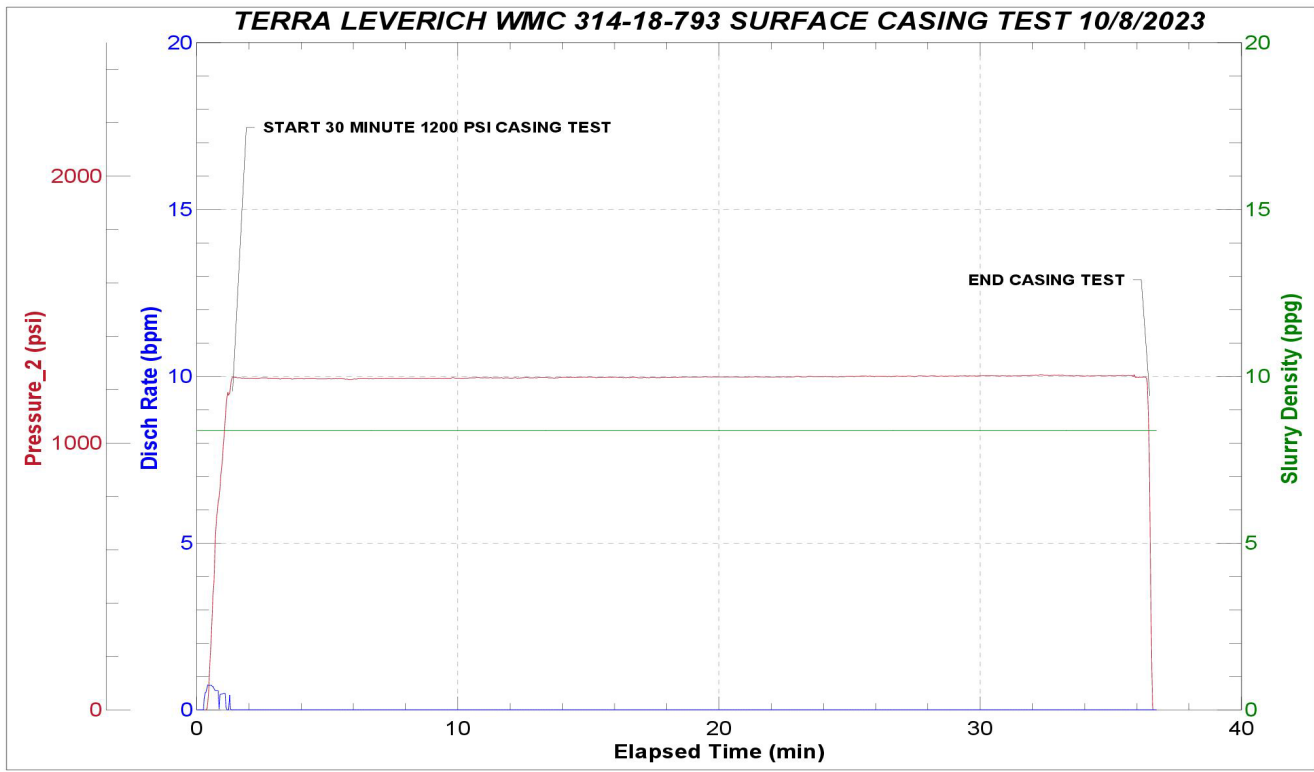
Pump Diagrams

JobMaster Program Version 5.01C1
Job Number: 88681
Customer: TERRA
Well Name: LEVERICH WMC 314-18-793



Job Start: Sunday, October 08, 2023

JobMaster Program Version 5.01C1
Job Number: 88681
Customer: TERRA
Well Name: LEVERICH WMC 314-18-793



Job Start: Sunday, October 08, 2023