



Terra Energy Partners, LLC

SURFACE POST JOB REPORT

Leverich WMC 423-18-793 05-045-24558
S:13 T:7S R:94W Garfield CO

CallSheet #: 88540
Proposal #: 71404



SURFACE Post Job Report

Attention: Mr. Dustin Childers | (936) 524-8828 | dchilders@terraep.com
Terra Energy Partners, LLC
4828 Loop Central Dr., Suite 900 | Houston, TX 77081

Dear Mr. Dustin Childers,

Thank you for the opportunity to provide cementing services on this well. American Cementing strives to achieve complete customer satisfaction. If you have any questions regarding the services or data provided, please contact American Cementing at any time.

Sincerely,

Lyndon Chandarjit

Field Engineer II | (281) 690-3840 | lyndon.chandarjit@americacementing.com

Field Office 28730 US-6, Rifle, CO 81650
Phone: (970) 657-1187

Job Details & Summary

Geometry

Type	Function	OD (in)	ID (in)	Weight (lb/ft)	Thread	Top (ft)	Bottom (ft)	Excess (%)
Casing	Outer	20	19.5	53	n/a	0	80	0
Open Hole	Outer	n/a	13.5	n/a	n/a	80	500	16
Open Hole	Outer	n/a	13.5	n/a	n/a	500	1134	16
Casing	Inner	9.625	8.921	36	n/a	0	1134	0

Equipment / People

Unit Type	Unit	Power Unit	Employee #1
Cement Trailer Float	CTF-242	TRC-180	Zachary Baker
Light Duty Vehicles	LDV-022		Gerron McClure
Cement Pump Float	CPF-052	TRH-957	Ryan Bonin

Timing

Event	Date/Time
ERTS	09/20/2023 11:30
Call Out	9/20/2023 03:45
Depart Facility	9/20/2023 09:00
On Location	9/20/2023 11:00
Rig Up Iron	9/20/2023 12:00
Job Started	9/20/2023 15:40
Job Completed	9/20/2023 17:12
Rig Down Iron	9/20/2023 18:00
Depart Location	9/20/2023 18:05

General Job Information

Metrics	Value
Well Fluid Density	9 lb/gal
Well Fluid Type	WBM
Rig Circulation Vol	300 bbls
Rig Circulation Time	0.5 hours
Calculated Displacement	84.4 bbls
Actual Displacement	84 bbls
Total Spacer to Surface	20 bbls
Total CMT to Surface	28 bbls
Well Topped Out	No
Top Out Volume	N/A bbls

Job Details

Metrics	Value
Well Full Prior to Job	Yes
Well Fluid Density Into Well	9 lb/gal
Well Fluid Density Out of Well	8.8 lb/gal

Job Details (cont.)

Metrics	Value
BHCT	81 °F
BHST	99 °F
Injection #2	psi

Water Analysis

Metrics	Value	Recommended
Water Source	None	
Temperature	68 °F	50-80 °F
pH Level	6	5.5-8.5
Chlorides	200 mg/L	0-3000 mg/L
Total Alkalinity	100	0-1000
Total Hardness	20 mg/L	0-500 mg/L
Carbonates	10 mg/L	0-100 mg/L
Sulfates	100 mg/L	0-1500 mg/L
Potassium	200 mg/L	0-3000 mg/L
Iron	10 mg/L	0-300 mg/L

Circulation

Lost Circulation Experienced	Losses into Spacer	Losses into Cement	Losses into Displacement
No			

Job Execution Information

Fluid	Product	Function	Density (lb/gal)	Yield (ft ³ /sk)	Water Rq. (gal/sk)	Water Rq. (gal/bbl)	Volume (sk)	Volume (bbl)	Designed Top (ft)
1	Water	Flush	8.34			42.00		20.00	0
2	Lead	Lead	12.30	2.31	13.15		158.00	64.94	0
3	Tail	Tail	12.80	2.03	11.15		185.00	66.98	500
4	Water	DisplacementFinal	8.34			42.00		84.40	0

Job Fluid Details

Fluid	Type	Fluid	Product	Function	Conc.	Uom
2	Lead	Lead	ASTM TYPE IL	Cement	100.00	%
2	Lead	Lead	A-10	Accelerator	5.00	%BWOB
2	Lead	Lead	A-2	Accelerator	3.00	lb/sk
2	Lead	Lead	A-7P	Accelerator	2.00	lb/sk
2	Lead	Lead	FP-24	Defoamer	0.30	%BWOB
2	Lead	Lead	IntegraSeal POLI	LostCirculation	0.25	lb/sk
2	Lead	Lead	STATIC FREE	Other	0.01	lb/sk
3	Tail	Tail	ASTM TYPE IL	Cement	100.00	%
3	Tail	Tail	A-10	Accelerator	5.00	%BWOB
3	Tail	Tail	A-2	Accelerator	2.00	lb/sk
3	Tail	Tail	A-7P	Accelerator	2.00	lb/sk
3	Tail	Tail	FP-24	Defoamer	0.30	%BWOB
3	Tail	Tail	IntegraSeal POLI	LostCirculation	0.25	lb/sk
3	Tail	Tail	STATIC FREE	Other	0.01	lb/sk

Job Logs

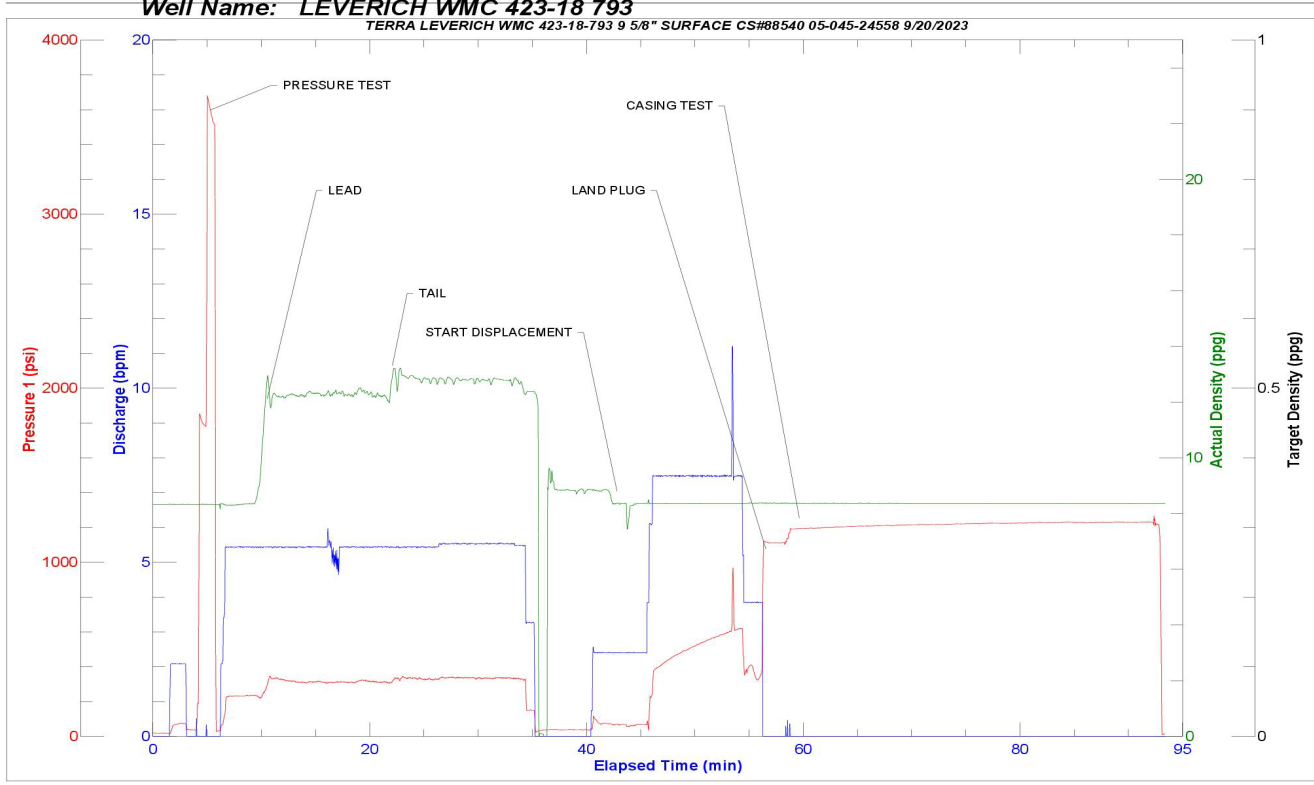
Line	Event	Date (MM/DD/YY)	Time (HH:MM)	Density (lb/gal)	Pump Rate (bpm)	Pump Volume (bbls)	Pipe Pressure (psi)	Comment
1	ARRIVED ON LOCATION	9/20/2023	11:30					ARRIVED ON LOACTION PER CUSTOMER REQUEST 11:30
2	HAZARD ASSESMENT	9/20/2023	11:35					
3	SPOT EQUIPMENT	9/20/2023	11:40					
4	PRE RIG UP SAFETY MEETING	9/20/2023	11:45					
5	RIGGED UP	9/20/2023	12:30					
6	PRE JOB SAFETY MEETING	9/20/2023	15:30					
7	STAB CEMENT HEAD	9/20/2023	15:35					
8	START JOB	9/20/2023	15:40					START JOB
9	PRESSURE TEST LINES	9/20/2023	15:45	8.34	1	1	3000	PRESSURE TEST LINES 3000 PSI
10	START 20 BBL FRESH WATER SPACER	9/20/2023	15:47	8.34	5	20	231	20 BBL FRESH WATER SPACER
11	START 65 BBL LEAD @ 12.3	9/20/2023	15:52	12.3	5	1	318	START 65 BBL LEAD SLURRY @ 12.3 (2.31,13.15) 158 SACKS
12	50 BBL GONE ON LEAD	9/20/2023	16:01	12.3	5	50	322	
13	END OF LEAD SLURRY	9/20/2023	16:03	12.3	5	65	330	END OF LEAD SLURRY
14	START 67 BBL TAIL @ 12.8	9/20/2023	16:03	12.8	5	1	336	START 67 BBL TAIL SLURRY @ 12.8 (2.03,11.15) 185 SACKS
15	50 BBL GONE ON TAIL	9/20/2023	16:13	12.8	5	50	313	
16	END OF TAIL SLURRY	9/20/2023	16:16	12.8	5	67	320	END OF TAIL SLURRY
17	SHUTDOWN/ DROP TOP PLUG	9/20/2023	16:18	8.34				SHUTDOWN/ DROP TOP PLUG
18	START 84.4 BBL FW DISPLACEMENT	9/20/2023	16:22	8.34	3	1	106	START 84.4 BBL FRESH WATER DISPLACEMENT
19	CAUGHT CEMENT	9/20/2023	16:29	8.34	8		480	CAUGHT CEMENT @27 BBL GONE ON DISPLACEMENT
20	50 BBL GONE ON DISPLACEMENT	9/20/2023	16:32	8.34	8	50	560	
21	PRESSURE BEFORE SLOW RATE	9/20/2023	16:35	8.34	8	74	617	PRESSURE BEFORE SLOWING RATE - 617
22	SLOW RATE PRESSURE	9/20/2023	16:35	8.34	3	74	364	SLOW RATE PRESSURE AT 3BPM - 364
23	PRESSURE BEFORE LANDING PLUG	9/20/2023	16:38	8.34	3	85	349	FINAL LIFT PRESSURE BEFORE LANDING PLUG - 349
24	LAND PLUG	9/20/2023	16:39	8.34	3	85	1114	BUMPED PLUG TO PSI - 1114
25	TEST CASING 30 MIN/CHECK FLOAT	9/20/2023	16:40	8.34	1	1	1175	TESTED CASING 30 MINUTES 1175PSIPRESSURE INCREASED TO 1220 AFTER 30 MIN/RETURNED 0.5 BBLS UPON FLOAT CHECK
26	END OF SERVICES	9/20/2023	17:12					CIRCULATED 88 SKS OR 36 BBLS TO PIT
27	POST JOB SAFETY MEETING	9/20/2023	17:15					
28	RIGGED DOWN	9/20/2023	18:00					



Line	Event	Date (MM/DD/YY)	Time (HH:MM)	Density (lb/gal)	Pump Rate (bpm)	Pump Volume (bbls)	Pipe Pressure (psi)	Comment
29	PRE CONVOY SAFETY MEETING	9/20/2023	18:05					
30	DEPART LOCATION	9/20/2023	18:10					
31	END OF JOB	9/20/2023	18:10					END OF JOB

Pump Diagrams

JobMaster Program Version 5.01C1
 Job Number: 88540
 Customer: TERRA
 Well Name: LEVERICH WMC 423-18-793



Job Start: Wednesday, September 20, 2023