



Terra Energy Partners, LLC

SURFACE POST JOB REPORT

Leverich WMC 512-18-793 05-045-24570
S:13 T:7S R:94W Garfield CO

CallSheet #: 88499
Proposal #: 71361



SURFACE Post Job Report

Attention: Mr. Dustin Childers | (936) 524-8828 | dchilders@terraep.com
Terra Energy Partners, LLC
4828 Loop Central Dr., Suite 900 | Houston, TX 77081

Dear Mr. Dustin Childers,

Thank you for the opportunity to provide cementing services on this well. American Cementing strives to achieve complete customer satisfaction. If you have any questions regarding the services or data provided, please contact American Cementing at any time.

Sincerely,

Lyndon Chandarjit

Field Engineer II | (281) 690-3840 | lyndon.chandarjit@americacementing.com

Field Office 28730 US-6, Rifle, CO 81650
Phone: (970) 657-1187

Job Details & Summary

Geometry

Type	Function	OD (in)	ID (in)	Weight (lb/ft)	Thread	Top (ft)	Bottom (ft)	Excess (%)
Casing	Outer	20	19.5	53	n/a	0	80	0
Open Hole	Outer	n/a	13.5	n/a	n/a	80	500	16
Open Hole	Outer	n/a	13.5	n/a	n/a	500	1177	16
Casing	Inner	9.625	8.921	36	n/a	0	1177	0

Equipment / People

Unit Type	Unit	Power Unit	Employee #1
Cement Trailer Float	CTF-555	TRC-201	Steven Richey
Light Duty Vehicles	LDV-082		Michael Burton
Cement Pump Float	CPF-053	TRC-201	Eric Brown

Timing

Event	Date/Time
ERTS	09/15/2023 02:30
Call Out	9/14/2023 16:00
Depart Facility	9/14/2023 18:00
On Location	9/14/2023 19:15
Rig Up Iron	9/14/2023 20:00
Job Started	9/15/2023 05:15
Job Completed	9/15/2023 06:10
Rig Down Iron	9/15/2023 06:15
Depart Location	9/15/2023 07:00

General Job Information

Metrics	Value
Well Fluid Density	9.3 lb/gal
Well Fluid Type	WBM
Rig Circulation Vol	212 bbls
Rig Circulation Time	0.5 hours
Calculated Displacement	87.8 bbls
Actual Displacement	88 bbls
Total Spacer to Surface	20 bbls
Total CMT to Surface	50 bbls
Well Topped Out	N/A
Top Out Volume	bbls

Job Details

Metrics	Value
Well Full Prior to Job	Yes
Well Fluid Density Into Well	9.3 lb/gal
Well Fluid Density Out of Well	9.3 lb/gal

Job Details (cont.)

Metrics	Value
BHCT	81 °F
BHST	99 °F

Water Analysis

Metrics	Value	Recommended
Water Source	None	
Temperature	60 °F	50-80 °F
pH Level	7	5.5-8.5
Chlorides	<200 mg/L	0-3000 mg/L
Total Alkalinity	35	0-1000
Total Hardness	<100 mg/L	0-500 mg/L
Carbonates	mg/L	0-100 mg/L
Sulfates	mg/L	0-1500 mg/L
Potassium	mg/L	0-3000 mg/L
Iron	mg/L	0-300 mg/L

Circulation

Lost Circulation Experienced	Losses into Spacer	Losses into Cement	Losses into Displacement
No			

Job Execution Information

Fluid	Product	Function	Density (lb/gal)	Yield (ft ³ /sk)	Water Rq. (gal/sk)	Water Rq. (gal/bbl)	Volume (sks)	Volume (bbl)	Designed Top (ft)
1	Water	Flush	8.34			42.00		20.00	0
2	Lead	Lead	12.30	2.31	13.15		158.00	64.94	0
3	Tail	Tail	12.80	2.03	11.15		187.00	67.71	447
4	Water	DisplacementFinal	8.34			42.00		88.00	0

Job Fluid Details

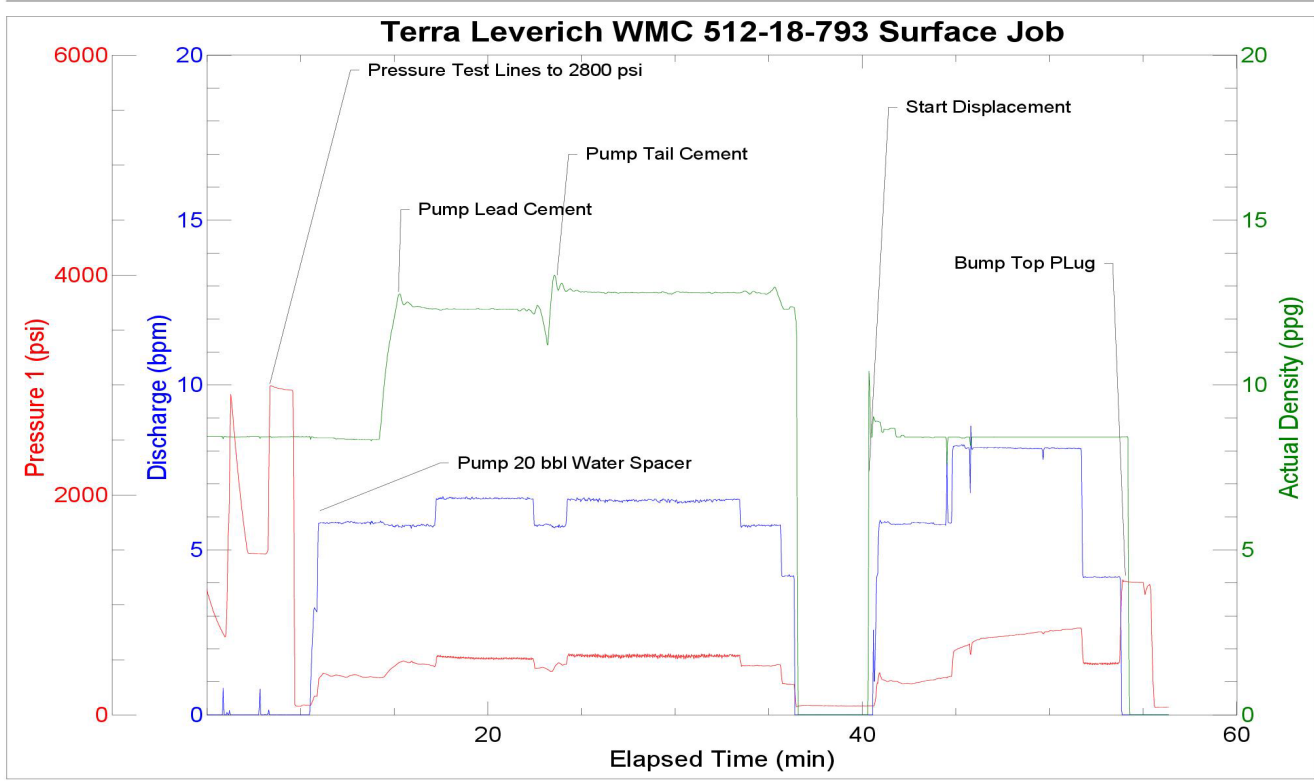
Fluid	Type	Fluid	Product	Function	Conc.	Uom
2	Lead	Lead	ASTM TYPE IL	Cement	100.00	%
2	Lead	Lead	A-10	Accelerator	5.00	%BWOB
2	Lead	Lead	A-2	Accelerator	3.00	lb/sk
2	Lead	Lead	A-7P	Accelerator	2.00	lb/sk
2	Lead	Lead	FP-24	Defoamer	0.30	%BWOB
2	Lead	Lead	IntegraSeal POLI	LostCirculation	0.25	lb/sk
2	Lead	Lead	STATIC FREE	Other	0.01	lb/sk
3	Tail	Tail	ASTM TYPE IL	Cement	100.00	%
3	Tail	Tail	A-10	Accelerator	5.00	%BWOB
3	Tail	Tail	A-2	Accelerator	2.00	lb/sk
3	Tail	Tail	A-7P	Accelerator	2.00	lb/sk
3	Tail	Tail	FP-24	Defoamer	0.30	%BWOB
3	Tail	Tail	IntegraSeal POLI	LostCirculation	0.25	lb/sk
3	Tail	Tail	STATIC FREE	Other	0.01	lb/sk

Job Logs

Line	Event	Date (MM/DD/YY)	Time (HH:MM)	Density (lb/gal)	Pump Rate (bpm)	Pump Volume (bbls)	Pipe Pressure (psi)	Comment
1	Callout	9/14/2023	16:00					
2	Arrive On Location	9/14/2023	19:15					Location time is 02:30 9/15/23
3	Rig Up Iron	9/14/2023	20:00					
4	Waiting	9/14/2023	20:30					Wait on rig to complete drilling and run casing
5	Safety Meeting	9/15/2023	05:00					
6	Pressure Test Lines	9/15/2023	05:15				2800	
7	Pump Spacer	9/15/2023	05:20					
8	Pump Lead Cement	9/15/2023	05:25	12.3	5.7	65	453	12.3 ppg confirmed with pressurized mud scale
9	Pump Tail Cement	9/15/2023	05:35	12.8	6.5	67	547	
10	Drop Top Plug	9/15/2023	05:50					
11	Pump Displacement	9/15/2023	05:51		5.6	20	322	50 bbl Cement to Surface
12	Pump Displacement	9/15/2023	05:55		8.1	40	706	
13	Pump Displacement	9/15/2023	06:00		8.1	60	755	
14	Land Plug	9/15/2023	06:03					483 final circ psi, landed at 1210 psi
15	Check Floats	9/15/2023	06:05					Floats held, 0.5 bbl back
16	Rig Down Iron	9/15/2023	06:10					
17	Depart Location	9/15/2023	07:00					

Pump Diagrams

JobMaster Program Version 5.01C1
Job Number: 88499
Customer: Terra Energy Partners
Well Name: Leverich WMC 512-18-793



Job Start: Friday, September 15, 2023