



# **Terra Energy Partners, LLC**

## **SURFACE POST JOB REPORT**

Leverich WMC 412-18-793 05-045-24556  
S:13 T:7S R:94W Garfield CO

CallSheet #: 88361  
Proposal #: 71136



**SURFACE Post Job Report**

**Attention:** Mr. Dustin Childers | (936) 524-8828 | dchilders@terraep.com  
Terra Energy Partners, LLC  
4828 Loop Central Dr., Suite 900 | Houston, TX 77081

---

Dear Mr. Dustin Childers,

Thank you for the opportunity to provide cementing services on this well. American Cementing strives to achieve complete customer satisfaction. If you have any questions regarding the services or data provided, please contact American Cementing at any time.

Sincerely,

**Lyndon Chandarjit**

Field Engineer II | (281) 690-3840 | lyndon.chandarjit@americacementing.com

**Field Office**      28730 US-6, Rifle, CO 81650  
Phone: (970) 657-1187

## Job Details & Summary

### Geometry

Type	Function	OD (in)	ID (in)	Weight (lb/ft)	Thread	Top (ft)	Bottom (ft)	Excess (%)
Casing	Outer	20	19.5	53	n/a	0	80	0
Open Hole	Outer	n/a	13.5	n/a	n/a	80	500	16
Open Hole	Outer	n/a	13.5	n/a	n/a	500	1186	16
Casing	Inner	9.625	8.921	36	LTC	0	1176	0

### Equipment / People

Unit Type	Unit	Power Unit	Employee #1
Cement Trailer Float	CTF-249	TRC-201	Lynn Wall
Light Duty Vehicles	LDV-022		Gerron McClure
Cement Pump Float	CPF-136	TRH-1137	Leopoldo Serna

### Timing

Event	Date/Time
ERTS	09/02/2023 10:00
Call Out	9/2/2023 04:00
Depart Facility	9/2/2023 09:00
On Location	9/2/2023 10:00
Rig Up Iron	9/2/2023 11:00
Job Started	9/2/2023 11:52
Job Completed	9/2/2023 13:33
Rig Down Iron	9/2/2023 14:30
Depart Location	9/2/2023 15:00

### General Job Information

Metrics	Value
Well Fluid Density	9 lb/gal
Well Fluid Type	WBM
Rig Circulation Vol	300 bbls
Rig Circulation Time	1 hours
Calculated Displacement	87.7 bbls
Actual Displacement	87 bbls
Total Spacer to Surface	20 bbls
Total CMT to Surface	30 bbls
Well Topped Out	No
Top Out Volume	N/A bbls

### Job Details

Metrics	Value
Well Full Prior to Job	Yes
Well Fluid Density Into Well	9 lb/gal
Well Fluid Density Out of Well	9 lb/gal

### Job Details (cont.)

Metrics	Value
BHCT	81 °F
BHST	99 °F

### Water Analysis

Metrics	Value	Recommended
Water Source	None	
Temperature	68 °F	50-80 °F
pH Level	6	5.5-8.5
Chlorides	200 mg/L	0-3000 mg/L
Total Alkalinity	100	0-1000
Total Hardness	100 mg/L	0-500 mg/L
Carbonates	10 mg/L	0-100 mg/L
Sulfates	100 mg/L	0-1500 mg/L
Potassium	200 mg/L	0-3000 mg/L
Iron	10 mg/L	0-300 mg/L

### Circulation

Lost Circulation Experienced	Losses into Spacer	Losses into Cement	Losses into Displacement
No			

### Job Execution Information

Fluid	Product	Function	Density (lb/gal)	Yield (ft <sup>3</sup> /sk)	Water Rq. (gal/sk)	Water Rq. (gal/bbl)	Volume (sks)	Volume (bbl)	Designed Top (ft)
1	Water	Flush	8.34			42.00		20.00	0
2	Lead	Lead	12.30	2.31	13.15		158.00	64.94	0
3	Tail	Tail	12.80	2.03	11.15		186.00	67.35	500
4	Water	DisplacementFinal	8.34			42.00		87.70	0

### Job Fluid Details

Fluid	Type	Fluid	Product	Function	Conc.	Uom
2	Lead	Lead	ASTM TYPE IL	Cement	100.00	%
2	Lead	Lead	A-10	Accelerator	5.00	%BWOB
2	Lead	Lead	A-2	Accelerator	3.00	lb/sk
2	Lead	Lead	A-7P	Accelerator	2.00	lb/sk
2	Lead	Lead	FP-24	Defoamer	0.30	%BWOB
2	Lead	Lead	IntegraSeal POLI	LostCirculation	0.25	lb/sk
2	Lead	Lead	STATIC FREE	Other	0.01	lb/sk
3	Tail	Tail	ASTM TYPE IL	Cement	100.00	%
3	Tail	Tail	A-10	Accelerator	5.00	%BWOB
3	Tail	Tail	A-2	Accelerator	2.00	lb/sk
3	Tail	Tail	A-7P	Accelerator	2.00	lb/sk
3	Tail	Tail	FP-24	Defoamer	0.30	%BWOB
3	Tail	Tail	IntegraSeal POLI	LostCirculation	0.25	lb/sk
3	Tail	Tail	STATIC FREE	Other	0.01	lb/sk

## Job Logs

Line	Event	Date (MM/DD/YY)	Time (HH:MM)	Density (lb/gal)	Pump Rate (bpm)	Pump Volume (bbls)	Pipe Pressure (psi)	Comment
1	ARRIVED ON LOCATION	9/2/2023	10:00					ARRIVED ON LOCATION PER CUSTOMER REQUEST 10:00
2	HAZARD ASSESMENT	9/2/2023	10:05					
3	SPOT EQUIPMENT	9/2/2023	10:10					
4	PRE RIG UP SAFETY MEETING	9/2/2023	10:15					
5	RIGGED UP	9/2/2023	11:00					
6	PRE JOB SAFETY MEETING	9/2/2023	11:30					
7	STAB CEMENT HEAD	9/2/2023	11:45					
8	START JOB	9/2/2023	11:52					
9	PRESSURE TEST LINES	9/2/2023	11:53	8.34	1	1	3000	
10	20 BBL FRESH WATER SPACER	9/2/2023	11:55	8.34	5	20	366	
11	START 65 BBL LEAD CEMENT @ 12.3	9/2/2023	11:59	12.3	5	1	480	START LEAD CEMENT @ 12.3 (2.31,13.15)158 SACKS OR 65
12	50 BBL GONE ON LEAD	9/2/2023	12:08	12.3	5	50	406	
13	END OF LEAD CEMENT	9/2/2023	12:10	12.3	5	65	410	END OF LEAD CEMENT
14	START 68 BBL TAIL CEMENT @ 12.8	9/2/2023	12:10	12.8	5	1	445	START 68 BBL TAIL CEMENT @ 12.8 (2.03,11.51) 158 SACKS OR 68 BBLS
15	50 BBL GONE ON TAIL	9/2/2023	12:18	12.8	5	50	440	
16	END OF TAIL CEMENT	9/2/2023	12:25	12.8	5	68	195	END OF TAIL CEMENT
17	SHUTDOWN/ DROP PLUG	9/2/2023	12:27					
18	START 87.7 BBL DISPLACEMENT	9/2/2023	12:29	8.34	3	1	93	START 87.7 BBL FRESH WATER DISPLACEMENT
19	CAUGHT CEMENT	9/2/2023	12:31	8.34	7	27	249	CAUGHT CEMENT @27 BBLS GONE
20	50 BBL GONE ON DISPLACEMENT	9/2/2023	12:37	8.34	7	50	661	
21	PRESSURE BEFORE SLOWING RATE	9/2/2023	12:41	8.34	7	77	787	PRESSURE BEFORE SLOWING RATE
22	SLOW RATE PRESSURE	9/2/2023	12:41	8.34	3	77	407	SLOW RATE PRESSURE @ 3BPM
23	PRESSURE BEFORE LANDING PLUG	9/2/2023	12:43	8.34	3	87	414	FINAL LIFT PRESSURE BEFORE LANDING PLUG
24	LAND PLUG	9/2/2023	12:44	8.34	3	87	1108	LANDED PLUG - 1108 PSI/ CIRCULATED 73 SKS OR 30 BBLS CEMENT TO PIT
25	CHECK FLOAT	9/2/2023	12:49					FLOAT CHECK RETURNED 1 BBLS
26	TEST CASING 1200 PSI	9/2/2023	12:54					TEST CASING 1200PSI FOR 33 MINUTES
27	POST JOB SAFETY MEETING	9/2/2023	13:30					
28	RIGGED DOWN	9/2/2023	14:00					
29	PRE CONVOY SAFETY MEETING	9/2/2023	14:15					
30	DEPART LOCATION	9/2/2023	14:30					
31	END OF JOB	9/2/2023	14:35					END OF JOB

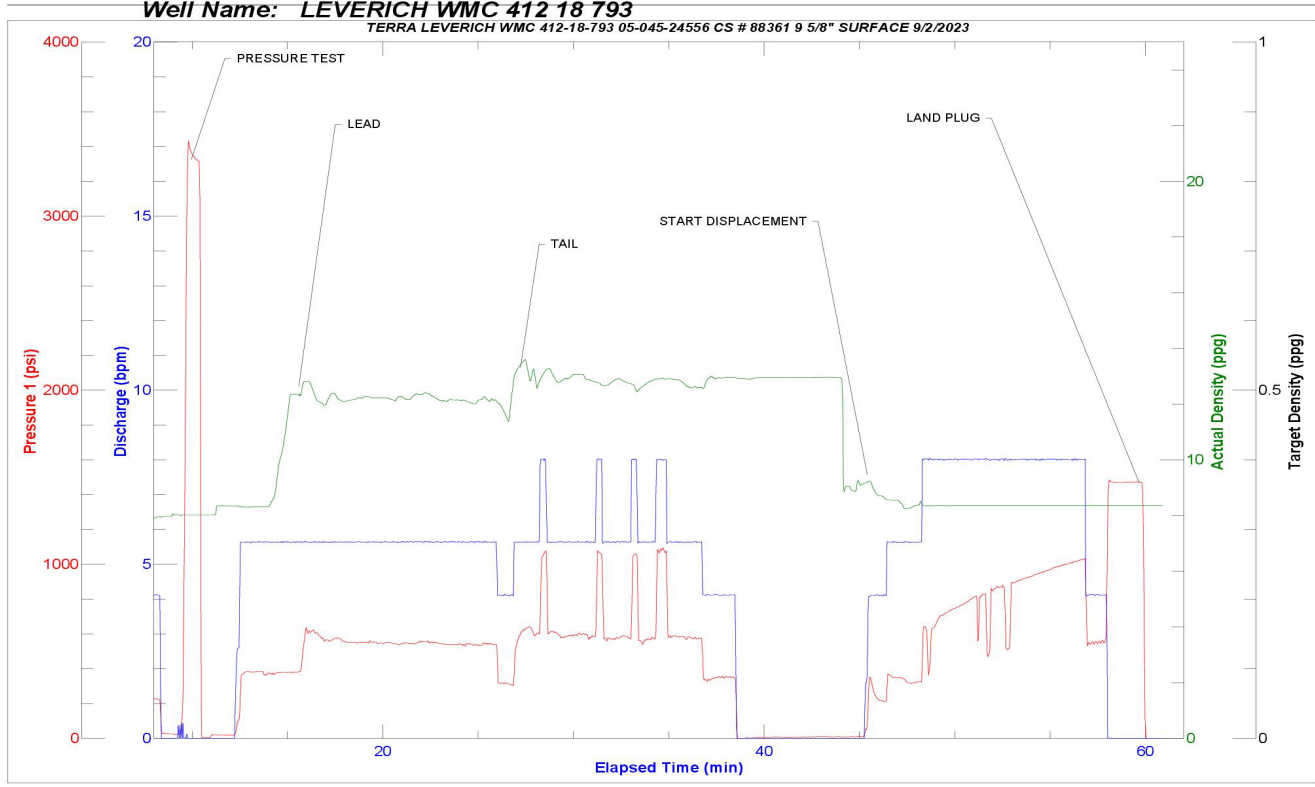
## Pump Diagrams

JobMaster Program Version 5.01C1

Job Number: 88361

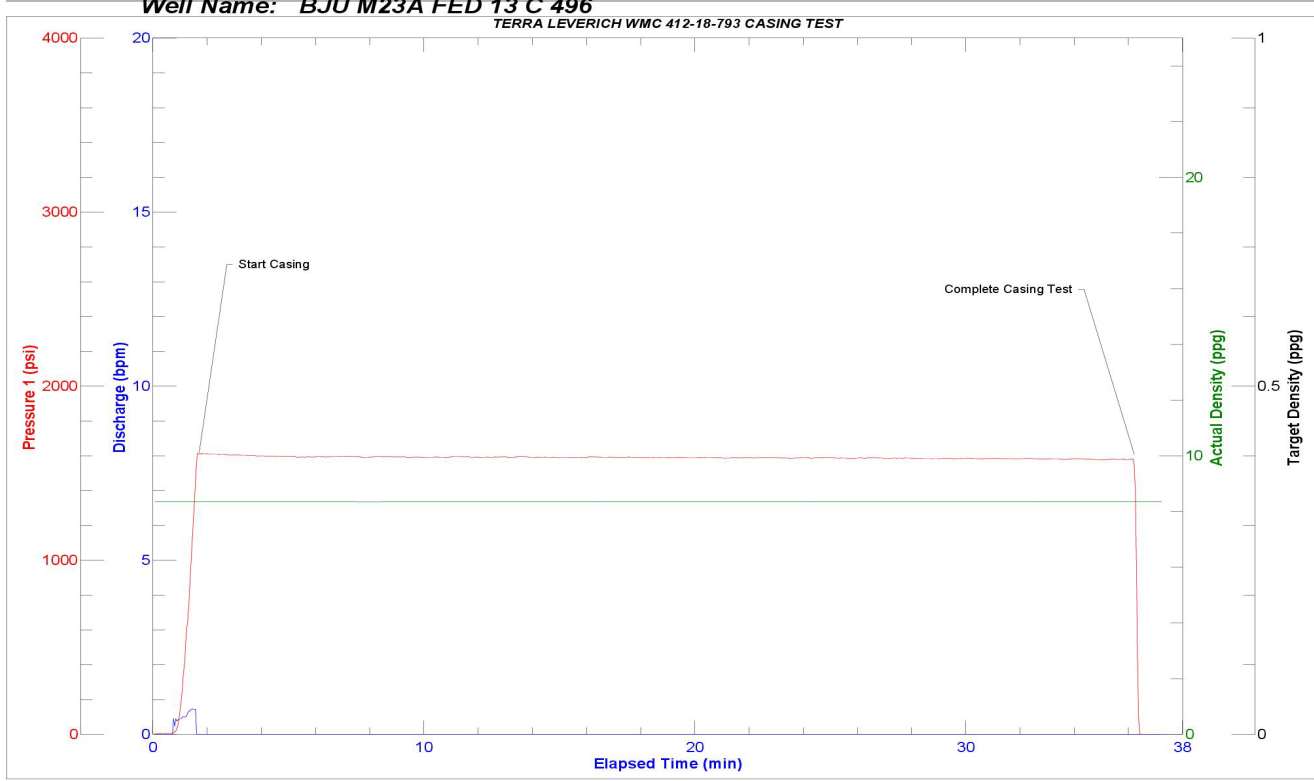
Customer: TERRA

Well Name: LEVERICH WMC 412 18 793



Job Start: Saturday, September 02, 2023

JobMaster Program Version 5.01C1  
 Job Number: 88363  
 Customer: CAREUS  
 Well Name: BJU M23A FED 13 C 496



Job Start: Saturday, September 02, 2023