



# **Terra Energy Partners, LLC**

## **SURFACE POST JOB REPORT**

Leverich SR 511-18 05-045-24573  
S:13 T:7S R:94W Garfield CO

CallSheet #: 88323  
Proposal #: 71076



**SURFACE Post Job Report**

**Attention:** Mr. Dustin Childers | (936) 524-8828 | dchilders@terraep.com  
Terra Energy Partners, LLC  
4828 Loop Central Dr., Suite 900 | Houston, TX 77081

---

Dear Mr. Dustin Childers,

Thank you for the opportunity to provide cementing services on this well. American Cementing strives to achieve complete customer satisfaction. If you have any questions regarding the services or data provided, please contact American Cementing at any time.

Sincerely,

**Zen Keith**

SME North | (307) 757-7178 | zen.keith@americacementing.com

**Field Office**      28730 US-6, Rifle, CO 81650  
Phone: (970) 657-1187

## Job Details & Summary

### Geometry

Type	Function	OD (in)	ID (in)	Weight (lb/ft)	Thread	Top (ft)	Bottom (ft)	Excess (%)
Casing	Outer	20	19.5	53	n/a	0	80	0
Open Hole	Outer	n/a	13.5	n/a	n/a	80	500	16
Open Hole	Outer	n/a	13.5	n/a	n/a	500	1188	16
Casing	Inner	9.625	8.921	36	n/a	0	1178	0

### Timing

Event	Date/Time
ERTS	08/27/2023 02:00
Call Out	8/26/2023 22:00
Depart Facility	8/26/2023 23:00
On Location	8/27/2023 00:00
Rig Up Iron	8/27/2023 02:00
Job Started	8/27/2023 07:05
Job Completed	8/27/2023 08:21
Rig Down Iron	8/27/2023 08:25
Depart Location	8/27/2023 09:00

### Equipment / People

Unit Type	Unit	Power Unit	Employee #1
Cement Trailer Float	CTF-246	TRC-201	Michael Hutchinson
Cement Pump Float	CPF-052	TRH-957	Ryan Bonin
Light Duty Vehicles	LDV-088		Leopoldo Serna
Light Duty Vehicles	LDV-063		Francisco Castillo

### General Job Information

Metrics	Value
Well Fluid Density	9.1 lb/gal
Well Fluid Type	WBM
Rig Circulation Vol	300 bbls
Rig Circulation Time	0.5 hours
Calculated Displacement	88 bbls
Actual Displacement	88 bbls
Total Spacer to Surface	20 bbls
Total CMT to Surface	35 bbls
Well Topped Out	No

### Job Details

Metrics	Value
Flare Prior to Job	No
Flare Prior to Job	0 units
Flare During Job	No
Flare During Job	0 units
Flare at End of Job	No
Flare at End of Job	0 units
Well Full Prior to Job	Yes
Well Fluid Density Into Well	9.1 lb/gal
Well Fluid Density Out of Well	9.1 lb/gal

### Job Details (cont.)

Metrics	Value
BHCT	81 °F
BHST	99 °F

### Water Analysis

Metrics	Value	Recommended
Water Source	Flat Tank	
Temperature	71 °F	50-80 °F
pH Level	7	5.5-8.5
Chlorides	0 mg/L	0-3000 mg/L
Total Alkalinity	240	0-1000
Total Hardness	250 mg/L	0-500 mg/L
Carbonates	0 mg/L	0-100 mg/L
Sulfates	200 mg/L	0-1500 mg/L
Potassium	250 mg/L	0-3000 mg/L
Iron	0 mg/L	0-300 mg/L

### Circulation

Lost Circulation Experienced
No

### Job Execution Information

Fluid	Product	Function	Density (lb/gal)	Yield (ft <sup>3</sup> /sk)	Water Rq. (gal/sk)	Water Rq. (gal/bbl)	Volume (sks)	Volume (bbl)	Designed Top (ft)
1	Water	Flush	8.34			42.00		20.00	0
2	Lead	Lead	12.30	2.31	13.15		158.00	64.94	0
3	Tail	Tail	12.80	2.03	11.15		186.00	67.35	500
4	Water	DisplacementFinal	8.34			42.00		88.00	0

### Job Fluid Details

Fluid	Type	Fluid	Product	Function	Conc.	Uom
2	Lead	Lead	ASTM TYPE IL	Cement	100.00	%
2	Lead	Lead	A-10	Accelerator	5.00	%BWOB
2	Lead	Lead	A-2	Accelerator	3.00	lb/sk
2	Lead	Lead	A-7P	Accelerator	2.00	lb/sk
2	Lead	Lead	FP-24	Defoamer	0.30	%BWOB
2	Lead	Lead	IntegraSeal POLI	LostCirculation	0.25	lb/sk
2	Lead	Lead	STATIC FREE	Other	0.01	lb/sk
3	Tail	Tail	ASTM TYPE IL	Cement	100.00	%
3	Tail	Tail	A-10	Accelerator	5.00	%BWOB
3	Tail	Tail	A-2	Accelerator	2.00	lb/sk
3	Tail	Tail	A-7P	Accelerator	2.00	lb/sk
3	Tail	Tail	FP-24	Defoamer	0.30	%BWOB
3	Tail	Tail	IntegraSeal POLI	LostCirculation	0.25	lb/sk
3	Tail	Tail	STATIC FREE	Other	0.01	lb/sk

## Job Logs

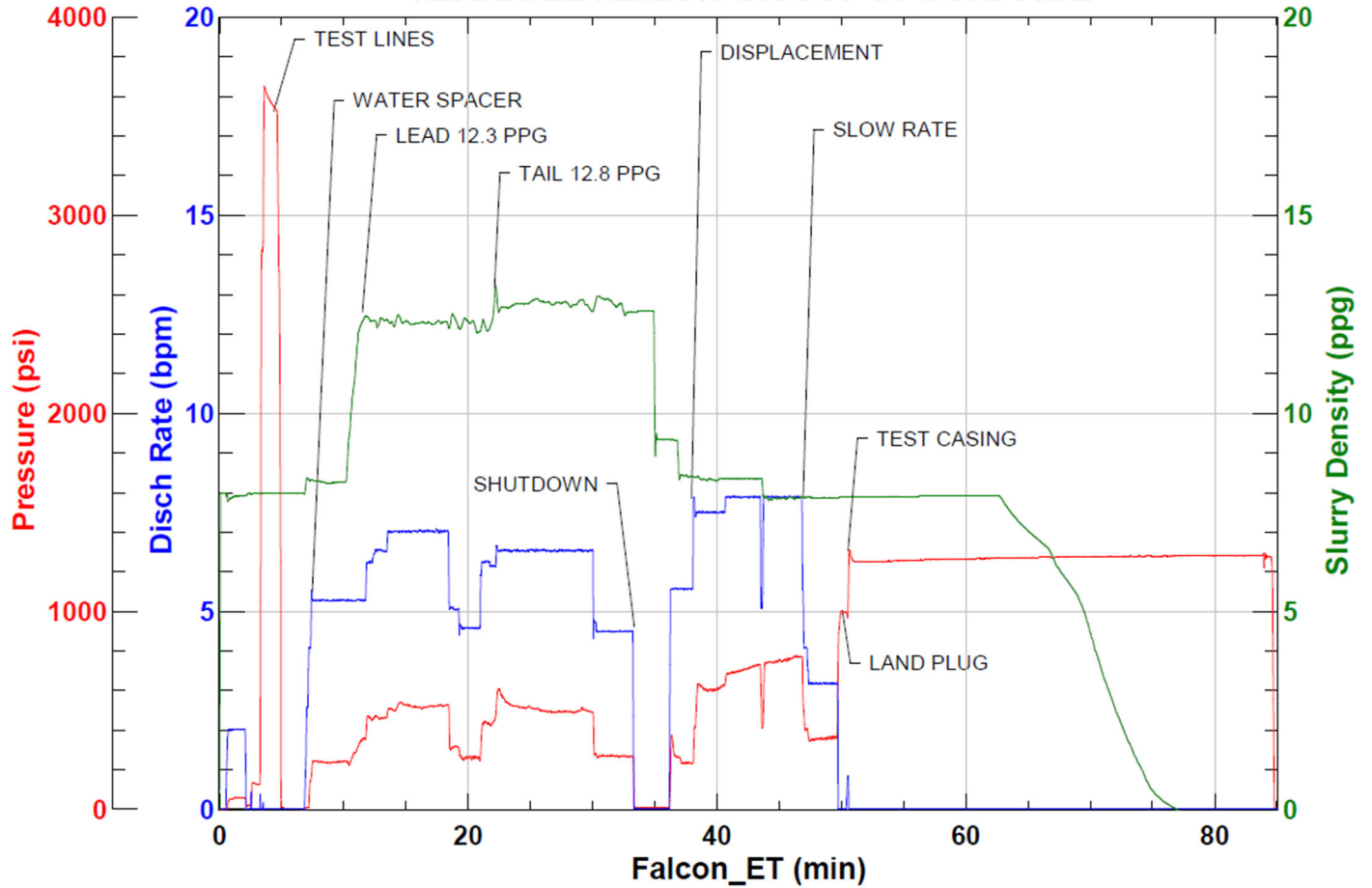
Line	Event	Date (MM/DD/YY)	Time (HH:MM)	Density (lb/gal)	Pump Rate (bpm)	Pump Volume (bbls)	Pipe Pressure (psi)	Comment
1	CALLOUT	8/26/2023	22:00					ON LOCATION AT
2	LEAVE THE YARD	8/26/2023	23:00					CREW LEAVE THE YARD
3	ON LOCATION	8/27/2023	00:00					CREW ON LOCATION
4	RIG UP	8/27/2023	02:00					RIG UP MEETING, RIG UP
5	SAFETY MEETING	8/27/2023	06:33					PRE-JOB SAFETY MEETING
6	PRESSURE TEST	8/27/2023	07:00				3621	PRESSURE TEST LINES
7	WATER SPACER	8/27/2023	07:05	8.34	5	20	241	WATER SPACER
8	LEAD CEMENT	8/27/2023	07:08	12.3	7	65	529	LEAD 158 SKS/65 BBLS AT 12.3 PPG
9	TAIL CEMENT	8/27/2023	07:19	12.8	6.5	67	513	TAIL 186 SKS/67 BBLS AT 12.8 PPG
10	SHUTDOWN	8/27/2023	07:31					SHUTDOWN, DROP PLUG
11	DISPLACEMENT	8/27/2023	07:34	8.34	8	78	777	DISPLACEMENT WATER
12	SLOW RATE	8/27/2023	07:44	8.34	3	10	361	SLOW RATE
13	LAND PLUG	8/27/2023	07:47					LAND PLUG, 35 BBLS CMT TO SURFACE
14	TEST CASING	8/27/2023	07:48				1250	PRESSURE TEST CASING
15	CHECK FLOATS	8/27/2023	08:21					FLOATS HELD, 0.5 BBL FLOW BACK
16	RIG DOWN	8/27/2023	08:25					RIG DOWN MEETING, RIG DOWN
17	LEAVE LOCATION	8/27/2023	09:00					CREW LEAVE LOCATION

## Pump Diagrams



JobMaster Program Version 5.01C1  
Job Number: 88323  
Customer: TERRA  
Well Name: LEVERICH SR 511-18

### TERRA LEVERICH SR 511-18 SURFACE



Job Start: Sunday, August 27, 2023