



Terra Energy Partners, LLC

SURFACE POST JOB REPORT

Leverich WMC 414-18-793 05-045-24562
S:13 T:7S R:94W Garfield CO

CallSheet #: 88679
Proposal #: 71595



SURFACE Post Job Report

Attention: Mr. Dustin Childers | (936) 524-8828 | dchilders@terraep.com
Terra Energy Partners, LLC
4828 Loop Central Dr., Suite 900 | Houston, TX 77081

Dear Mr. Dustin Childers,

Thank you for the opportunity to provide cementing services on this well. American Cementing strives to achieve complete customer satisfaction. If you have any questions regarding the services or data provided, please contact American Cementing at any time.

Sincerely,

Lyndon Chandarjit

Field Engineer II | (281) 690-3840 | lyndon.chandarjit@americacementing.com

Field Office 28730 US-6, Rifle, CO 81650
Phone: (970) 657-1187

Job Details & Summary

Geometry

Type	Function	OD (in)	ID (in)	Weight (lb/ft)	Thread	Top (ft)	Bottom (ft)	Excess (%)
Casing	Outer	20	19.5	53	n/a	0	80	0
Open Hole	Outer	n/a	13.5	n/a	n/a	80	500	16
Open Hole	Outer	n/a	13.5	n/a	n/a	500	1132	16
Casing	Inner	9.625	8.921	36	n/a	0	1132	0

Equipment / People

Unit Type	Unit	Power Unit	Employee #1
Cement Trailer Float	CTF-385	TRC-202	Myles Contreras
Light Duty Vehicles	LDV-082		Jose Carcamo Benitez
Light Duty Vehicles	LDV-092		Collin Woronovitch
Cement Pump Float	CPF-058	TRH-1140	Jeremy Bradbrook

Timing

Event	Date/Time
ERTS	10/01/2023 17:30
Call Out	10/1/2023 10:00
Depart Facility	10/1/2023 14:00
On Location	10/1/2023 15:00
Rig Up Iron	10/1/2023 15:20
Job Started	10/1/2023 19:50
Job Completed	10/1/2023 21:54
Rig Down Iron	10/1/2023 22:20
Depart Location	10/1/2023 23:30

General Job Information

Metrics	Value
Well Fluid Density	9 lb/gal
Well Fluid Type	WBM
Rig Circulation Vol	280 bbls
Rig Circulation Time	0.5 hours
Calculated Displacement	84 bbls
Actual Displacement	84 bbls
Total Spacer to Surface	20 bbls
Total CMT to Surface	35 bbls
Well Topped Out	No

Job Details

Metrics	Value
Well Full Prior to Job	Yes
Well Fluid Density Into Well	9 lb/gal
Well Fluid Density Out of Well	9 lb/gal

Job Details (cont.)

Metrics	Value
BHCT	81 °F
BHST	99 °F

Water Analysis

Metrics	Value	Recommended
Water Source	Upright Rig Tank	
Temperature	60 °F	50-80 °F
pH Level	7	5.5-8.5
Chlorides	300 mg/L	0-3000 mg/L
Total Alkalinity	180	0-1000
Total Hardness	120 mg/L	0-500 mg/L
Carbonates	NA mg/L	0-100 mg/L
Sulfates	200 mg/L	0-1500 mg/L
Potassium	100 mg/L	0-3000 mg/L
Iron	0 mg/L	0-300 mg/L

Circulation

Lost Circulation Experienced	Losses into Spacer	Losses into Cement	Losses into Displacement
No	0	0	0

Circulation Details

GOOD RETURNS THROUGHOUT THE JOB . FLOATS GELD 1/2 BBL BACK . 35 BBLS OF CEMENT TO SURFACE . CASING TEST HELD GAINED 17 PSI, FINAL PRESSURE ON THE CASING TEST WAS 1262 PSI.

Job Execution Information

Fluid	Product	Function	Density (lb/gal)	Yield (ft ³ /sk)	Water Rq. (gal/sk)	Water Rq. (gal/bbl)	Volume (sks)	Volume (bbl)	Designed Top (ft)
1	Water	Flush	8.34			42.00		20.00	0
2	Lead	Lead	12.30	2.31	13.15		158.00	64.94	0
3	Tail	Tail	12.80	2.03	11.15		184.00	66.62	500
4	Water	DisplacementFinal	8.34			42.00		84.00	0

Job Fluid Details

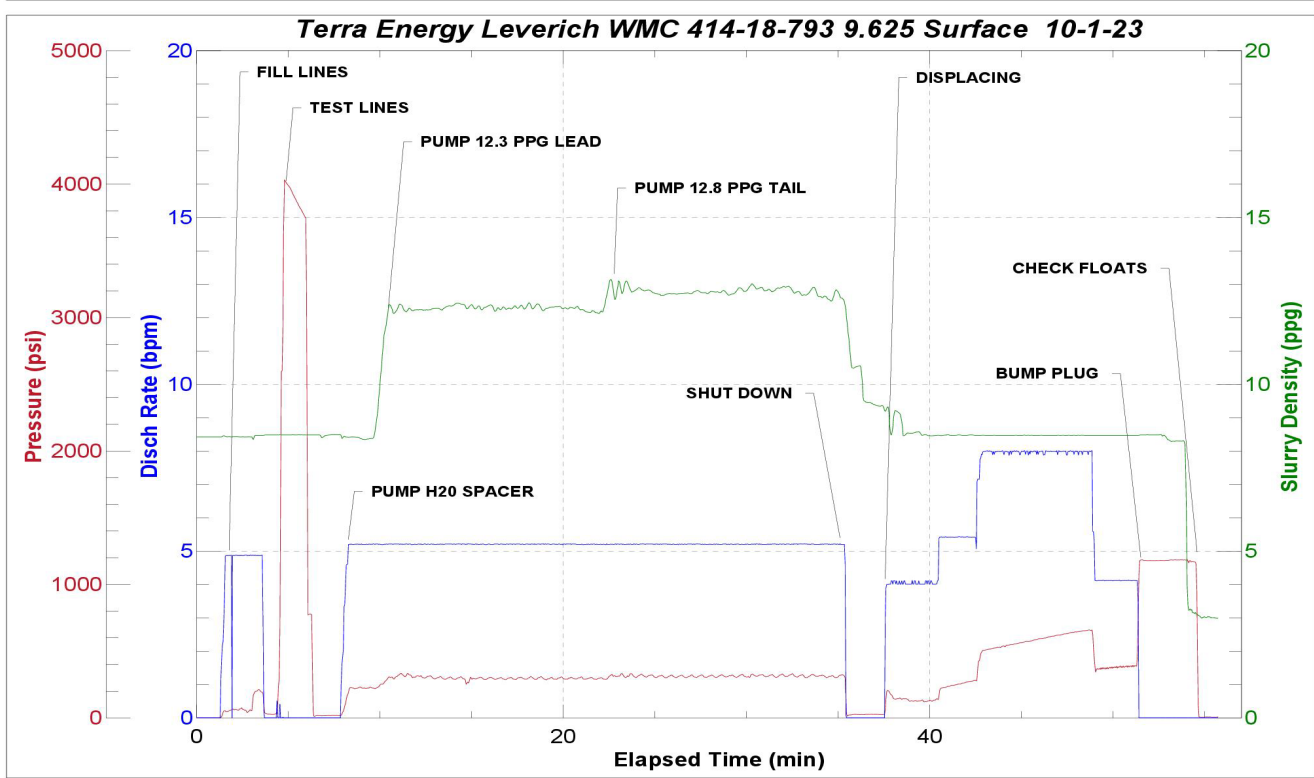
Fluid	Type	Fluid	Product	Function	Conc.	Uom
2	Lead	Lead	ASTM TYPE IL	Cement	100.00	%
2	Lead	Lead	A-10	Accelerator	5.00	%BWOB
2	Lead	Lead	A-2	Accelerator	3.00	lb/sk
2	Lead	Lead	A-7P	Accelerator	2.00	lb/sk
2	Lead	Lead	FP-24	Defoamer	0.30	%BWOB
2	Lead	Lead	IntegraSeal POLI	LostCirculation	0.25	lb/sk
2	Lead	Lead	STATIC FREE	Other	0.01	lb/sk
3	Tail	Tail	ASTM TYPE IL	Cement	100.00	%
3	Tail	Tail	A-10	Accelerator	5.00	%BWOB
3	Tail	Tail	A-2	Accelerator	2.00	lb/sk
3	Tail	Tail	A-7P	Accelerator	2.00	lb/sk
3	Tail	Tail	FP-24	Defoamer	0.30	%BWOB
3	Tail	Tail	IntegraSeal POLI	LostCirculation	0.25	lb/sk
3	Tail	Tail	STATIC FREE	Other	0.01	lb/sk

Job Logs

Line	Event	Date (MM/DD/YY)	Time (HH:MM)	Density (lb/gal)	Pump Rate (bpm)	Pump Volume (bbls)	Pipe Pressure (psi)	Comment
1	Callout	10/1/2023	10:00					CREW CALLED OUT FOR LOCATION TIME OF 17:30 10-1-23
2	Depart Location	10/1/2023	14:00					CREW DEPARTS STAGING FOR RIG LOCATION
3	Arrive On Location	10/1/2023	15:00					CREW AND EQUIPMENT ARRIVED ON LOCATION. RIG IS PREPARING TO START DRILLING
4	Rig Up Iron	10/1/2023	15:20					PRE RIG UP MEETING / RIG UP IRON HOSES AND EQUIPMENT. ON STANDBY WAITING FOR CASING TO FINISH BEING RAN. CASING LANDED @ 19:35 RIG CIRCULATED .5 HOUR 280 BBLs
5	Safety Meeting	10/1/2023	19:50					PRE JOB SAFETY MEETING WITH RIG CREW AND COMPANY MAN. FINISH RIGGING UP HEAD AND FLOOR AFTER SAFETY MEETING.
6	Fill Lines	10/1/2023	20:14	8.34	5	10	215	FILL LINES WITH 10 BBLs OF FRESH WATER
7	Pressure Test Lines	10/1/2023	20:17	8.34		1	4128	PRESSURE TEST PUMP AND LINES TO 4128 PSI
8	Other	10/1/2023	20:20	8.34	5.2	10	243	PUMP 10 BBLs FRESH WATER SPACER FULL RETURNS
9	Pump Lead Cement	10/1/2023	20:23	12.3	5.2	0	277	BEGIN PUMPING 12.3 PPG, 2.31Y, 13.2MW LEAD CEMENT, WEIGHT VERIFIED BY MUD SCALE
10	Pump Lead Cement	10/1/2023	20:29	12.3	5.2	30	305	30 BBLs LEAD CEMENT PUMPED
11	Pump Lead Cement	10/1/2023	20:34	12.3	5.2	35	307	65 BBLs (158 SKS) LEAD CEMENT PUMPED FULL RETURNS
12	Pump Tail Cement	10/1/2023	20:35	12.8	5.2	0	321	BEGIN PUMPING 12.8 PPG, 2.03Y, 11.1MW TAIL CEMENT, WEIGHT VERIFIED BY MUD SCALE
13	Pump Tail Cement	10/1/2023	20:41	12.8	5.2	30	337	30 BBLs TAIL CEMENT PUMPED
14	Pump Tail Cement	10/1/2023	20:47	12.8	5.2	38	338	68 BBLs (184 SKS) TAIL CEMENT PUMPED FULL RETURNS.
15	Drop Top Plug	10/1/2023	20:50	8.34	4	0	151	DROP PLUG, WITNESSED BY COMPANY MAN. BEGIN PUMPING FRESH WATER DISPLACEMENT, FULL RETURNS
16	Pump Displacement	10/1/2023	20:55	8.34	5.5	20	302	20 BBLs DISPLACEMENT PUMPED, CAUGHT PLUG @ 25 BBLs DISPLACED. SPACER BACK @ 35 BBLs FULL RETURNS
17	Pump Displacement	10/1/2023	20:56	8.34	8	30	593	50 BBLs DISPLACEMENT PUMPED. CEMENT TO SURFACE @ 49 BBLs PUMPED, 35 BBLs TOTAL CEMENT TO SURFACE. MAX LIFT-745 PSI @ 8 BPM
18	Pump Displacement	10/1/2023	21:04	8.34	4	34	482	84 BBLs (CALCULATED) TOTAL DISPLACEMENT PUMPED
19	Land Plug	10/1/2023	21:05	8.34	4		1226	PLUG LANDED. FCP-482 PSI BUMP TO-1226 PSI
20	Check Floats	10/1/2023	21:06					BLEED OFF PRESSURE-CHECK FLOATS, FLOATS HELD .5 BBLs BACK
21	Test Casing	10/1/2023	21:20	8.34	1	0.75	1245	PRESSURE UP TO 1245 PSI PERFORM CASING TEST FOR 32 MINUTES
22	Release press	10/1/2023	21:54				1262	CASING TEST HELD , FINAL PRESSURE 1262
23	End Job	10/1/2023	21:55					POST JOB SAFETY MEETING
24	Rig Down Iron	10/1/2023	20:15					RIG DOWN WAS COMPLETED SAFELY
25	Depart Location	10/1/2023	23:30					

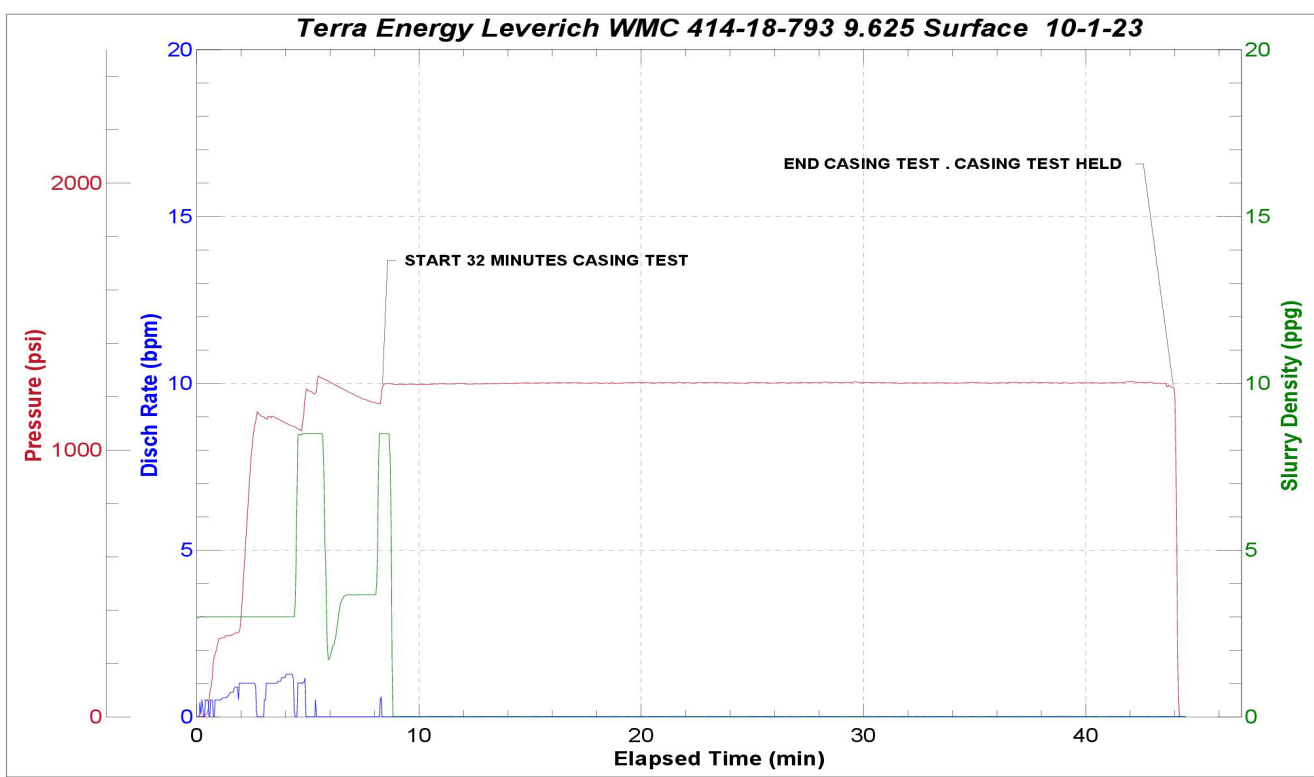
Pump Diagrams

JobMaster Program Version 5.01C1
Job Number: 88679
Customer: Terra Energy
Well Name: Leverich WMC 141-18-793



Job Start: Sunday, October 01, 2023

JobMaster Program Version 5.01C1
Job Number: 88679
Customer: Terra Energy
Well Name: Leverich WMC 141-18-793



Job Start: Sunday, October 01, 2023