



Terra Energy Partners, LLC

SURFACE POST JOB REPORT

Leverich SR 521-24 05-045-24568
S:13 T:7S R:94W Garfield CO

CallSheet #: 88103
Proposal #: 70700



SURFACE Post Job Report

Attention: Mr. Dustin Childers | (936) 524-8828 | dchilders@terraep.com
Terra Energy Partners, LLC
4828 Loop Central Dr., Suite 900 | Houston, TX 77081

Dear Mr. Dustin Childers,

Thank you for the opportunity to provide cementing services on this well. American Cementing strives to achieve complete customer satisfaction. If you have any questions regarding the services or data provided, please contact American Cementing at any time.

Sincerely,

Krystal Schell

Field Engineer I | (719) 992-1830 | krystal.schell@americacementing.com

Field Office 28730 US-6, Rifle, CO 81650
Phone: (970) 657-1187

Job Details & Summary

Geometry

Type	Function	OD (in)	ID (in)	Weight (lb/ft)	Thread	Top (ft)	Bottom (ft)	Excess (%)
Casing	Outer	20	19.5	53	n/a	0	80	0
Open Hole	Outer	n/a	13.5	n/a	n/a	80	500	16
Open Hole	Outer	n/a	13.5	n/a	n/a	500	1186	16
Casing	Inner	9.625	8.921	36	n/a	0	1176	0

Equipment / People

Unit Type	Unit	Power Unit	Employee #1
Cement Trailer Float	CTF-161	TRC-202	Balint, Daniel
Cement Pump Float	CPF-052	TRH-1137	Spigner, Isaiah
Light Duty Vehicles	LDV-045		McClure, Gerron

Timing

Event	Date/Time
ERTS	00/05/2023 00:00
Call Out	8/5/2023 17:00
Depart Facility	8/6/2023 01:30
On Location	8/6/2023 03:00
Rig Up Iron	8/6/2023 04:00
Job Started	8/6/2023 04:44
Job Completed	8/6/2023 06:27
Rig Down Iron	8/6/2023 07:00
Depart Location	8/6/2023 07:30

General Job Information

Metrics	Value
Well Fluid Density	9 lb/gal
Well Fluid Type	WBM
Rig Circulation Vol	500 bbls
Rig Circulation Time	1 hours
Calculated Displacement	87 bbls
Actual Displacement	87 bbls
Total Spacer to Surface	20 bbls
Total CMT to Surface	27 bbls
Well Topped Out	No
Top Out Volume	N/A bbls

Job Details

Metrics	Value
Flare Prior to Job	No
Flare Prior to Job	N/A units
Flare During Job	No
Flare During Job	N/A units
Flare at End of Job	No
Flare at End of Job	N/A units
Well Full Prior to Job	Yes
Well Fluid Density Into Well	8.5 lb/gal
Well Fluid Density Out of Well	8.5 lb/gal

Job Details (cont.)

Metrics	Value
BHCT	81 °F
BHST	99 °F

Water Analysis

Metrics	Value	Recommended
Water Source	Upright Rig Tank	
Temperature	68 °F	50-80 °F
pH Level	6	5.5-8.5
Chlorides	500 mg/L	0-3000 mg/L
Total Alkalinity	200	0-1000
Total Hardness	100 mg/L	0-500 mg/L
Carbonates	10 mg/L	0-100 mg/L
Sulfates	200 mg/L	0-1500 mg/L
Potassium	200 mg/L	0-3000 mg/L
Iron	10 mg/L	0-300 mg/L

Circulation

Lost Circulation Experienced

No

Job Execution Information

Fluid	Product	Function	Density (lb/gal)	Yield (ft ³ /sk)	Water Rq. (gal/sk)	Water Rq. (gal/bbl)	Volume (sks)	Volume (bbl)	Designed Top (ft)
1	Water	Flush	8.34			42.00		20.00	0
2	Lead	Lead	12.30	2.31	13.15		158.00	64.94	0
3	Tail	Tail	12.80	2.03	11.15		185.00	66.98	500
4	Water	DisplacementFinal	8.34			42.00		87.00	0

Job Fluid Details

Fluid	Type	Fluid	Product	Function	Conc.	Uom
2	Lead	Lead	ASTM TYPE IL	Cement	100.00	%
2	Lead	Lead	A-10	Accelerator	5.00	%BWOB
2	Lead	Lead	A-2	Accelerator	3.00	lb/sk
2	Lead	Lead	A-7P	Accelerator	2.00	lb/sk
2	Lead	Lead	FP-24	Defoamer	0.30	%BWOB
2	Lead	Lead	IntegraSeal POLI	LostCirculation	0.25	lb/sk
2	Lead	Lead	STATIC FREE	Other	0.01	lb/sk
3	Tail	Tail	ASTM TYPE IL	Cement	100.00	%
3	Tail	Tail	A-10	Accelerator	5.00	%BWOB
3	Tail	Tail	A-2	Accelerator	2.00	lb/sk
3	Tail	Tail	A-7P	Accelerator	2.00	lb/sk
3	Tail	Tail	FP-24	Defoamer	0.30	%BWOB
3	Tail	Tail	IntegraSeal POLI	LostCirculation	0.25	lb/sk
3	Tail	Tail	STATIC FREE	Other	0.01	lb/sk

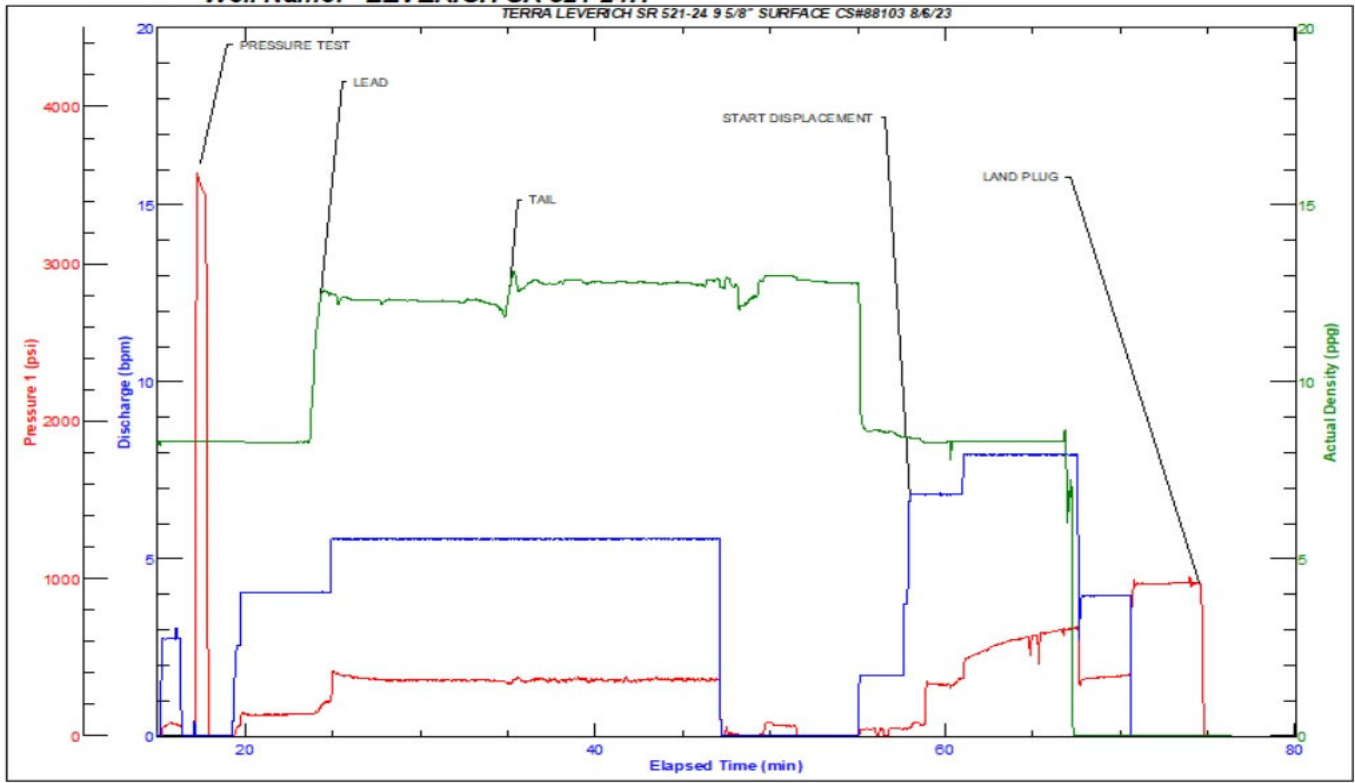
Job Logs

Line	Event	Date (MM/DD/YY)	Time (HH:MM)	Density (lb/gal)	Pump Rate (bpm)	Pump Volume (bbls)	Pipe Pressure (psi)	Comment
1	ARRIVED ON LOCATION	8/6/2023	03:00					ARRIVED ON LOCATION
2	HAZARD ASSESMENT	8/6/2023	03:05					
3	SPOT EQUIPMENT	8/6/2023	03:10					
4	PRE RIG UP SAFETY MEETING	8/6/2023	03:15					
5	RIGGED UP	8/6/2023	03:30					
6	PRE JOB SAFETY MEETING	8/6/2023	04:30					
7	STAB HEAD	8/6/2023	04:35					
8	START JOB	8/6/2023	04:44					START JOB
9	PRESSURE TEST	8/6/2023	04:49	8.34	1	1	3000	PRESSURE TEST LINES 3000 PSI
10	20 BBL FW SPACER	8/6/2023	04:56	8.34	5	20	240	START 20 BBL FRESH WATER SPACER
11	65 BBL LEAD @12.3	8/6/2023	04:59	12.3	5	1	480	START LEAD CEMENT @ 12.3 158 SKS (2.31, 13.15)
12	END OF LEAD	8/6/2023	05:08	12.3	5	65	472	END OF LEAD CEMENT
13	START TAIL @12.8	8/6/2023	05:09	12.8	5	1	480	START TAIL CEMENT@ 12.8 186 SKS (2.05, 11.15)
14	END TAIL CEMENT	8/6/2023	05:21	12.8	3	67	90	END OF TAIL CEMENT
15	SHUTDOWN	8/6/2023	05:22					SHUTDOWN
16	DROP TOP PLUG	8/6/2023	05:22					DROP TOP PLUG
17	START 87.2 BBL FW DISPLACEMENT	8/6/2023	05:29	8.34	3	1	132	START 87.2 BBL FRESH WATER DISPLACEMENT
18	CAUGHT CEMENT	8/6/2023	05:34	8.34	5	12	400	CAUGHT CEMENT @20 BBLS GONE
19	50 BBL GONE	8/6/2023	05:39	8.34	8	50	680	
20	PRESSURE BEFORE SLOW RATE	8/6/2023	05:41	8.34	8	77	667	PRESSURE BEFORE SLOWING RATE - 667
21	SLOW RATE PRESSURE	8/6/2023	05:41	8.34	3	77	364	SLOW RATE - 340
22	PRESSURE BEFORE LAND PLUG	8/6/2023	05:44	8.34	3	87.2	450	FINAL LIFT PRESSURE BEFORE LANDING PLUG - 450
23	LAND PLUG	8/6/2023	05:44	8.34	3	87.2	970	LAND PLUG @ - 970 PSI CIRCULATED 66 SACKS OR 27 BBLS TO PIT
24	CHECK FLOAT	8/6/2023	05:50	8.34				CHECK FLOAT - RETURNED 0.5 BBLS UPON FLOAT CHECK
25	CASING TEST	8/6/2023	05:53	8.34	1	1	1250	CASING TEST 30 MINUTES
26	POST SAFETY MEETING	8/6/2023	06:30					
27	RIGGED DOWN	8/6/2023	07:00					
28	PRE CONVOY SAFETY MEETING	8/6/2023	07:30					
29	DEPART LOCATION	8/6/2023	07:30					
30	END OF JOB	8/6/2023	07:30					END OF JOB

Pump Diagrams



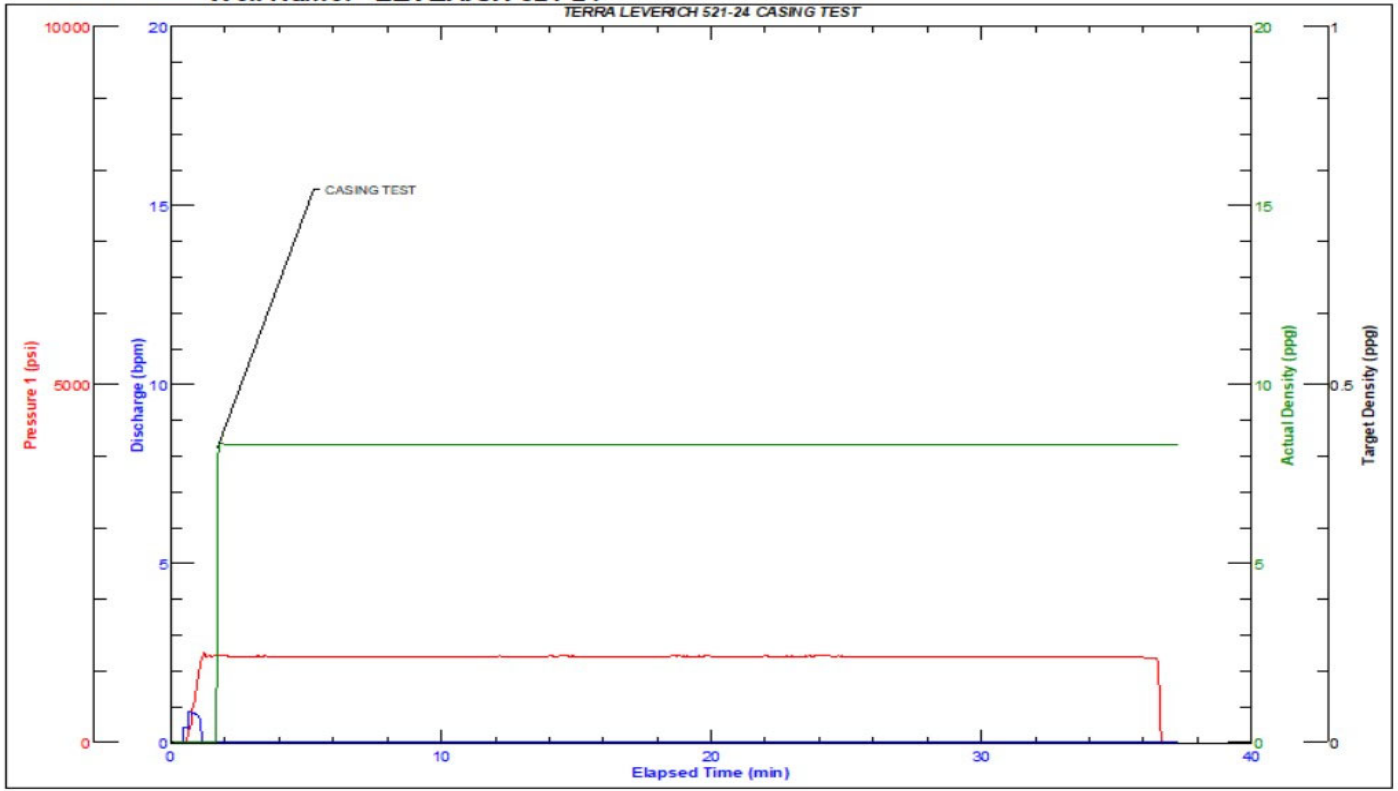
JobMaster Program Version 5.01C1
Job Number: 88103
Customer: TERRA
Well Name: LEVERICH SR 521 24H



Job Start: Sunday, August 06, 2023



JobMaster Program Version 5.01C1
Job Number: 88103
Customer: TERRA
Well Name: LEVERICH 521 24



Job Start: Sunday, August 06, 2023