

WGS84
±15ft

40.08412, -104.99883

ft
±12ft

5029

°T
±14

E84



05Dec23 09:51 UPRR 43 Pan Am B7/Facility 1 ECMC Environmental Inspection
© 05-Dec-23 09:51:00 AM





WGS84
±15ft 40.08499, -104.99684 Δ $\frac{\text{ft}}{\pm 12\text{ft}}$ 5026 \triangle $\frac{^\circ, \text{T}}{\pm 12}$ W283



05Dec23 09:54 UPRR 43 Pan Am B7/Facility 1 ECMC Environmental Inspection
© 05-Dec-23 09:54:17 AM



WGS84
±16ft

40.08497, -104.99671

ft
±11ft

5027

°T
±11

E84



05Dec23 09:54 UPRR 43 Pan Am B7/Facility 1 ECMC Environmental Inspection
05-Dec-23 09:54:56 AM





WGS84
±16ft

40.08495, -104.99671

ft
±11ft

5024

°;T
±11

SE161



05Dec23 09:55 UPRR 43 Pan Am B7/Facility 1 ECMC Environmental Inspection
© 05-Dec-23 09:55:04 AM



05Dec23 09:55 UPRR 43 Pan Am B7/Facility 1 ECMC Environmental Inspection
© 05-Dec-23 09:55:21 AM

WGS84
±16ft 40.08529, -104.99666 Δ $\frac{\text{ft}}{\pm 11\text{ft}}$ 5024 ∇ $\frac{^\circ, \text{T}}{\pm 12}$ N3



05Dec23 09:57 UPRR 43 Pan-Am B7/Facility 1 ECMC Environmental Inspection
© 05-Dec-23 09:57:01 AM







WGS84
±16ft

40.08537, -104.99677

ft
±11ft

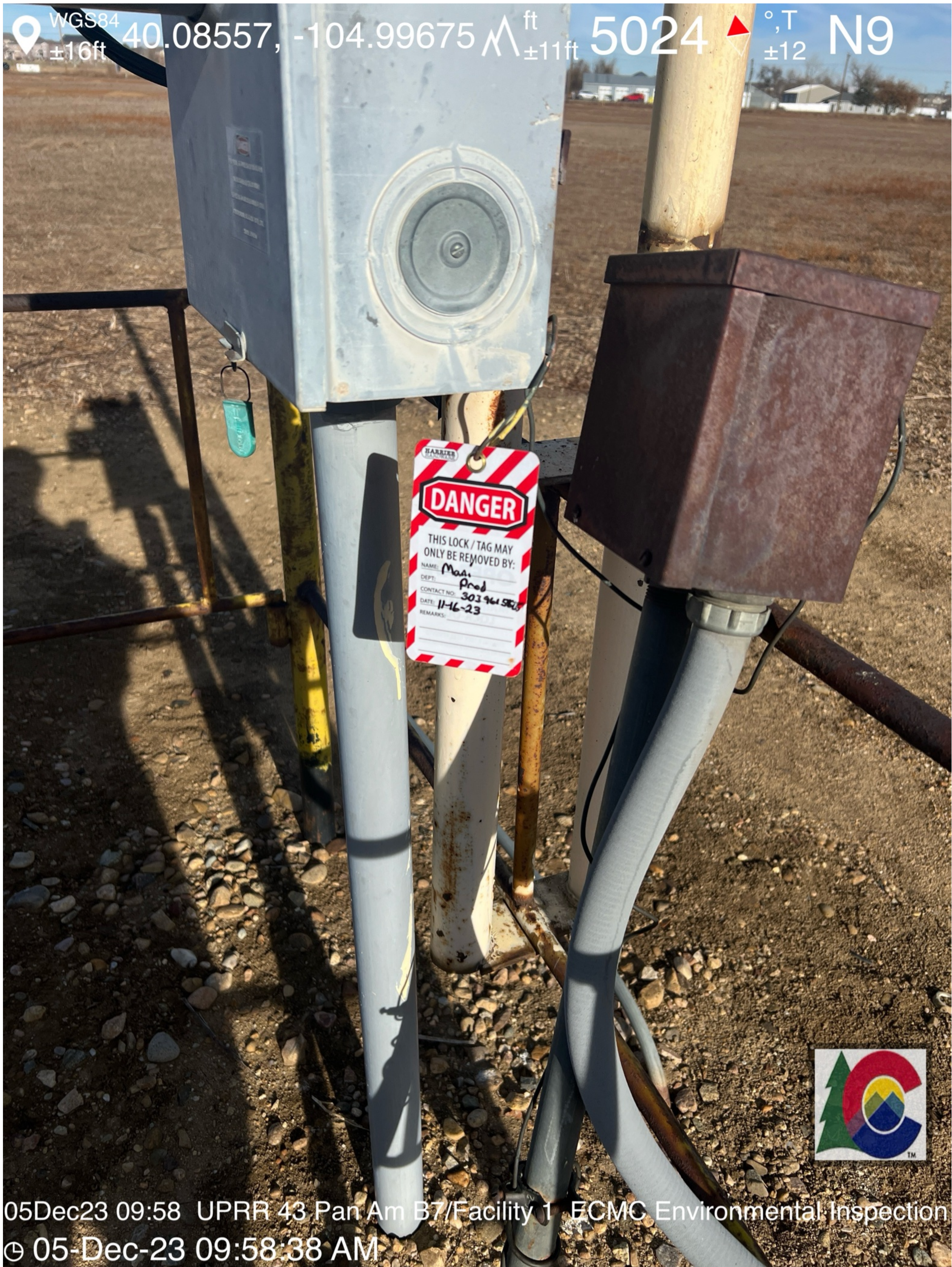
5022

°T
±12

E76



05Dec23 09:57 UPRR 43 Pan Am B7/Facility 1 ECMC Environmental Inspection
© 05-Dec-23 09:57:43 AM



05Dec23 09:58 UPRR 43 Pan Am B7/Facility 1 ECMC Environmental Inspection
© 05-Dec-23 09:58:38 AM





WGS84 40.08547, -104.99662 Δ ± 11 ft 5024 \angle ± 12 ° T W275
 ± 16 ft



05Dec23 09:59 UPRR 43 Pan Am B7/Facility 1 ECMC Environmental Inspection
© 05-Dec-23 09:59:38 AM





WGS84 $\pm 16\text{ft}$ 40.08512, -104.99653 ft $\pm 11\text{ft}$ 5022 ft ± 12 S177



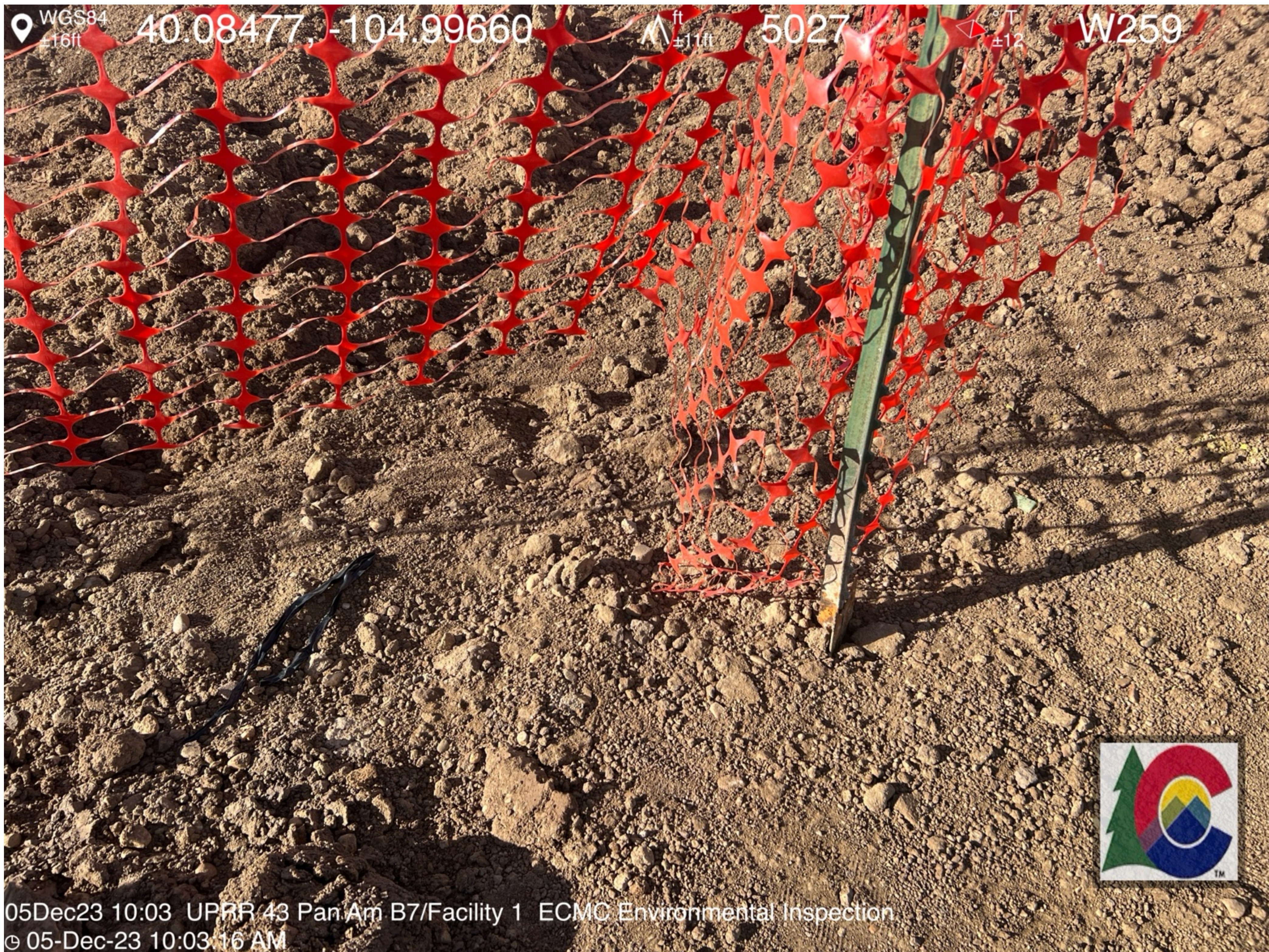
05Dec23 10:00 UPRR 43 Pan Am B7/Facility 1 ECMG Environmental Inspection
© 05-Dec-23 10:00:59 AM



05Dec23 10:01 UPRR 43 Pan Am B7/Facility 1, EOMC Environmental Inspection
© 05-Dec-23 10:01:53 AM







WGS84 40.08477, -104.99660

ft ±11ft

5027

°T ±12

W259



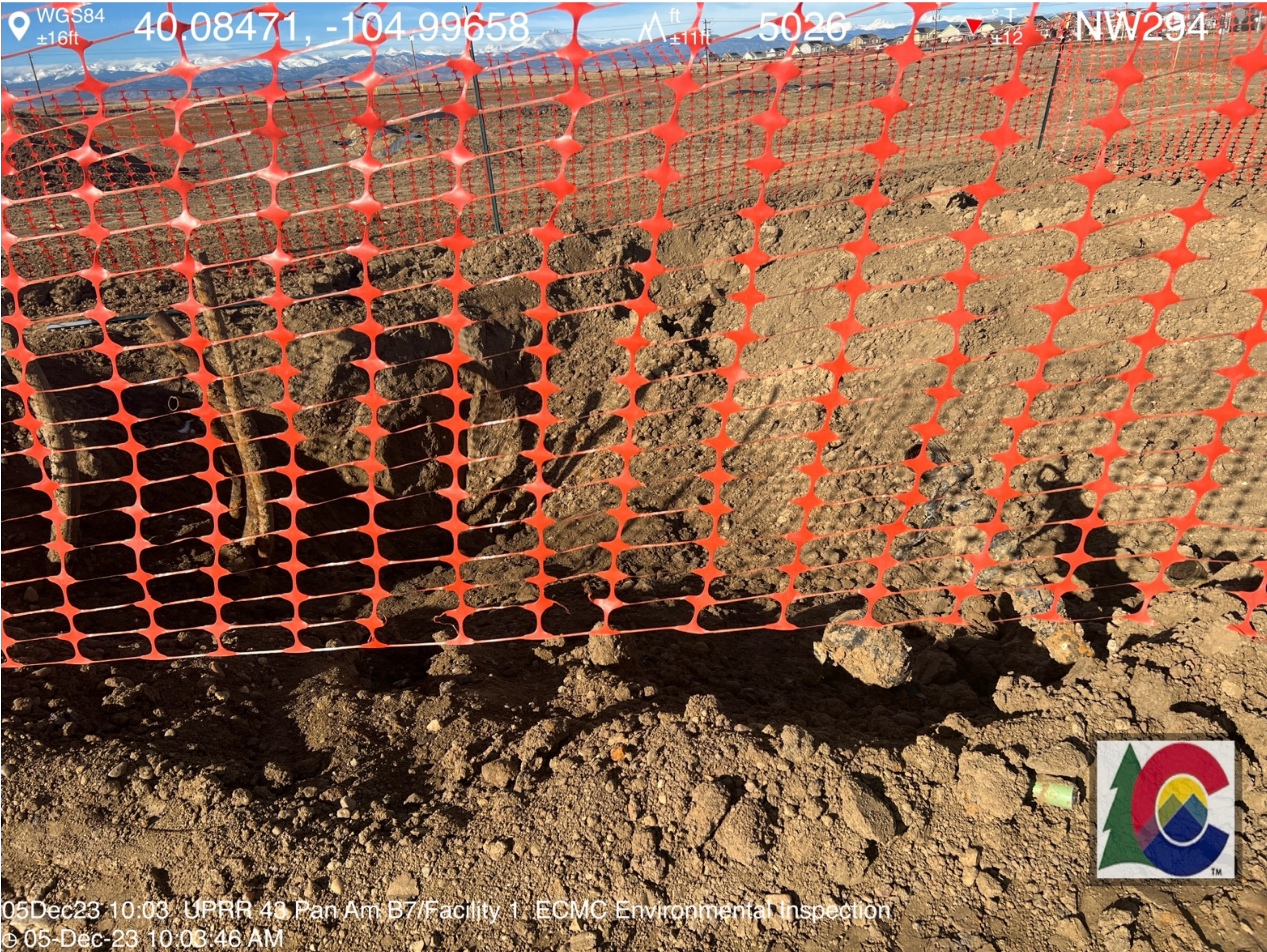
05Dec23 10:03 UPRR 43 Pan Am B7/Facility 1 ECMC Environmental Inspection
© 05-Dec-23 10:03:16 AM



WGS84 $\pm 16\text{ft}$ 40.08470, -104.99656 Δ ft $\pm 11\text{ft}$ 5025 \triangle $^{\circ}\text{T}$ ± 12 SW248



05Dec23 10:03 UPRR 43 Pan Am B7/Facility 1 ECMC Environmental Inspection
© 05-Dec-23 10:03:37 AM



05Dec23 10:03 UPRR 43 Pan Am B7/Facility 1 ECMC Environmental Inspection
© 05-Dec-23 10:03:46 AM





WGS84 40.08460, -104.99650 5026 S180
±16ft ±11ft ±12

05Dec23 10:09 UPRR 43 Pan Am B7/Facility 1 ECMC Environmental Inspection
© 05-Dec-23 10:09:13 AM



WGS84
±16ft

40.08459, -104.99650

ft
±11ft

5026

°T
±12

SW209



WGS84
±16ft

40.08459, -104.99650

ft
±11ft

5027

°T
±12

SE150



05Dec23 10:09 UPRR 43 Pan Am B7/Facility 1 ECMC Environmental Inspection
© 05-Dec-23 10:09:20 AM

WGS84
±16ft

40.08458, -104.99655

ft
±11ft

5027

°T
±12

S188



05Dec23 10:09 UPRR 43 Pan Am B7/Facility 1 ECMC Environmental Inspection
© 05-Dec-23 10:09:43 AM



WGS84
±16ft

40 08459 -104 99653

Alt 5025

°T
±12

SE115



05Dec23 10:10 UPRR 43 Pan Am B7/Facility 1 ECMC Environmental Inspection
© 05-Dec-23 10:10:07 AM

WGS84
±12ft

40.08460, -104.99634

ft
±10ft

5031

°T
±12

SW229



05Dec23 10:15 UPRR 43 Pan Am B7/Facility 1 ECMC Environmental Inspection
© 05-Dec-23 10:15:36 AM









WG684 40.08407 -104.99673 5029 E93
+160v ±12v

05Dec23 10:52 LPBR/43 Pan Am B7/Facility 1 ECMC Environmental Inspection
G 05-Dec-23 10:52:26 AM







