



00046234

Form 3160-5
(June 1990)UNITED STATES
DEPARTMENT OF THE INTERIOR
BUREAU OF LAND MANAGEMENTFORM APPROVED
Budget Bureau No. 1004-0135
Expires: March 31, 1993

SUNDRY NOTICES AND REPORTS ON WELLS

Do not use this form for proposals to drill or to deepen or reentry to a different reservoir.
Use "APPLICATION FOR PERMIT-" for such proposals

SUBMIT IN TRIPLICATE

1. Type of Well

☐ Oil Well ☐ Gas Well ☒ Other INJECTOR

2. Name of Operator

Chevron U.S.A. Production Company

3. Address and Telephone No.

100 Chevron Road, Rangely, Colorado 81648 (303) 675-3700

4. Location of Well (Footage, Sec., T., R., M., or Survey Description)

2885' FSL & 50' FEL (SE NE) SEC. 2, T1N, R102W, 6 th P.M.

5. Lease Designation and Serial No.
D-052264

6. If Indian, Allottee or Tribe Name

7. If Unit or CA, Agreement Designation
Rangely Weber
Sand Unit8. Well Name and No.
HAGOOD UNIT #19. API Well No.
05-103-0543210. Field and Pool, or Exploratory Area
Rangely Colorado11. County or Parish, State
Rio Blanco,
Colorado

12. CHECK APPROPRIATE BOX(s) TO INDICATE NATURE OF NOTICE, REPORT, OR OTHER DATA

TYPE OF SUBMISSION

- ☒ Notice of Intent
- ☐ Subsequent Report
- ☐ Final Abandonment Notice

TYPE OF ACTION

- ☒ Abandonment
- ☐ Recompletion
- ☐ Plugging Back
- ☐ Casing Repair
- ☐ Altering Casing
- ☐ Other _____

- ☐ Change of Plans
- ☐ New Construction
- ☐ Non-Routine Fracturing
- ☐ Water Shut-Off
- ☐ Conversion to Injection
- ☐ Dispose Water

(Note) Report results of multiple completion on Well
Completion or Recompletion Report and Log form.)

13. Describe Proposed or Completed Operations (Clearly state all pertinent details, and give pertinent dates, including estimated date of starting any proposed work. If well is directionally drilled, give subsurface locations and measured and true vertical depths for all markers and zones pertinent to this work.)

IT IS PROPOSED TO RE-ENTER TO PLUG AND ABANDON ABOVE WELL.

INSTALL WELLHEAD, MOVE IN COILED TBG UNIT. NU BOPE.
 DRILL OUT SURFACE CEMENT PLUG, CLEAN OUT 7" CASING TO TOP OF CEMENT PLUG @ 3387'.
 SET 100 SACK CEMENT PLUG 3387'-2907'. DISPLACE 7" CASING W\ 9.2 PPG BRINE 2907'-650'.
 SET 135 SACK CEMENT PLUG 650'-SURFACE.
 CEMENT SQUEEZE OR PRESSURE TEST 9 5/8" X 7" ANNULUS TO 500 PSI.
 ND WELLHEAD, CUT CASING @ CELLAR FLOOR.
 WELD 1/4" PLATE ON TOP OF CASING. W\ WELL DATA & WEEP HOLE.
 RIG DOWN. RECLAIM LOCATION.

RECEIVED

JUN 24 1992

COLO. OIL & GAS CONS. COMM.

14. I hereby certify that the foregoing is true and correct

Signed J.D. Howard

Title Drilling Technologist

Date 04-20-92

(This space for Federal or State office use)

Approved by:

Title

SR. PETROLEUM ENGINEER

Date

JUN 25 1992

Conditions of approval, if any:

Title 18 U.S.C. Section 1001, makes it a crime for any person knowingly and willfully to make to any department or agency of the United States any false, fictitious or fraudulent statements or representations as to any matter within its jurisdiction.

*See instruction on Reverse Side

CHEVRON U.S.A. PRODUCTION CO.

HAGOOD UNIT 1

RE-ENTER TO PLUG & ABANDON WELL

PROCEDURE:

1. MIRU, NU & TEST BOPE.
2. DRILL OUT SURFACE CEMENT PLUG AND CLEAN OUT 7" CASING TO TOP OF CEMENT PLUG @ +/- 3387'.
3. SET BALANCED 100 SX CEMENT PLUG +/- 3387'-2907'.
4. DISPLACE 7" CASING W\ 9.2 PPG BRINE 2907'-650'.
5. SPOT 135 SX CEMENT PLUG 650'-SURFACE.
6. CEMENT SQUEEZE OR PRESS TEST 9 5/8" X 7" ANNULUS TO 500 PSI.
7. NIPPLE DOWN WELL HEAD. CUT CASING AT CELLAR FLOOR.
8. WELD 1/4" PLATE ON TOP OF CASING WITH WELL DATA AND WEEP HOLE.
9. RIG DOWN AND CLEAN LOCATION.
10. NOTIFY FACILITIES GROUP TO RECLAIM LOCATION.

CURRENT WELL

SCHEMATIC

CHEVRON U.S.A. PRODUCTION CO.

HAGOOD UNIT 1

SE NE SEC. 2, T1N, R102W

FED. # D-052264

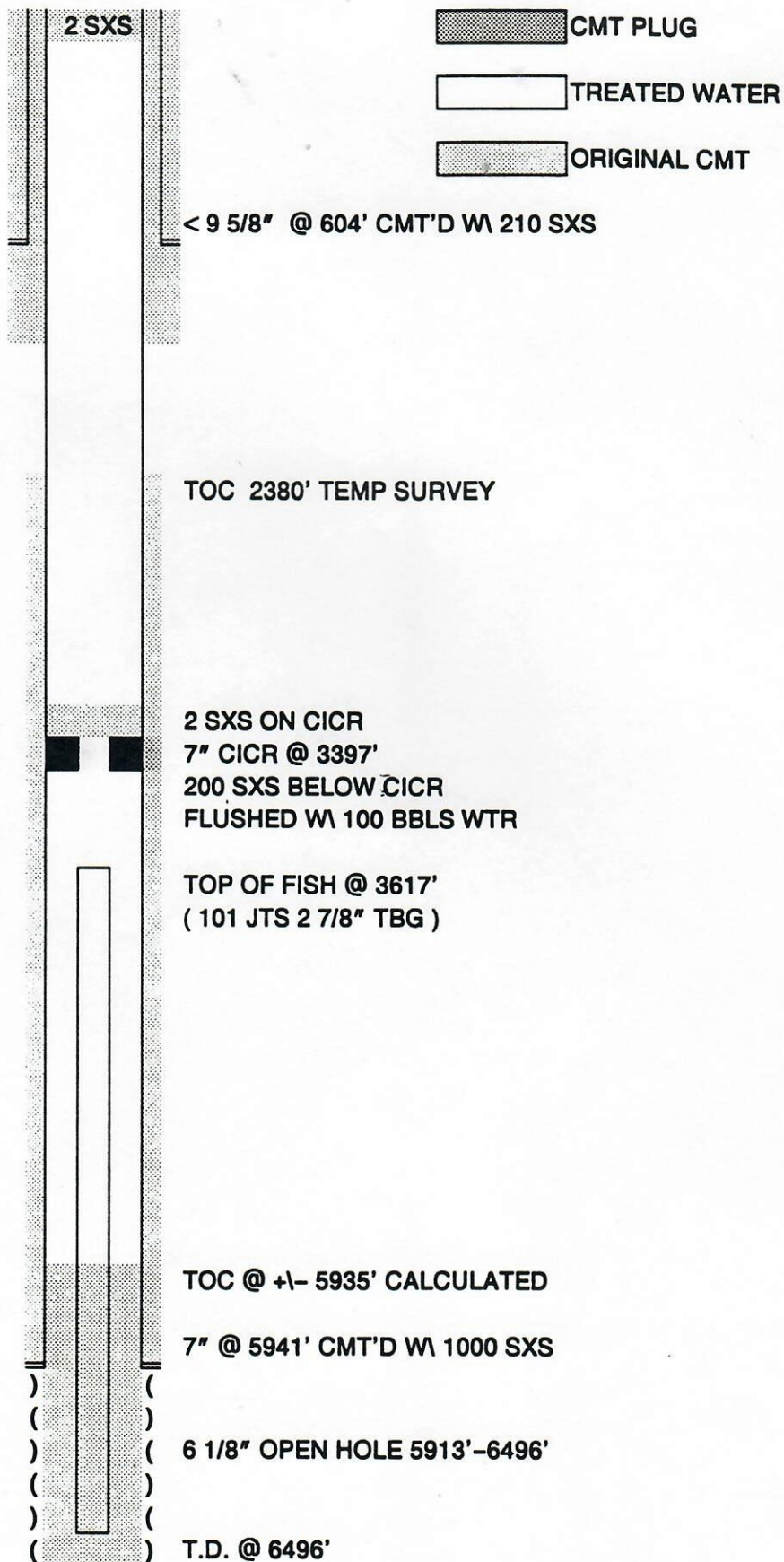
API # 05-103-05432

1974 PUMPED
150 SXS CMT DOWN
9 5/8" X 7" ANNULUS

DAKOTA TOP @ 3455'

MORRISON TOP @ 3529'

WEBER TOP @ 5868'



**PROPOSED FINAL
PLUGGING SCHEMATIC**

CHEVRON U.S.A. PRODUCTION CO.
HAGOOD UNIT 1
SE NE SEC. 2, T1N, R102W

FED. # D-052264

API # 05-103-05432

1974 PUMPED
150 SXS CMT DOWN
9 5/8" X 7" ANNULUS

DAKOTA TOP @ 3455'

MORRISON TOP @ 3529'

WEBER TOP @ 5868'

