

Operator: CRESTONE PEAK RESOURCES
Location Name: STATE MASSIVE 5-65 2-3
Loc ID: 465461
Inspection: 709400633



Exhibit A



Exhibit B



Exhibit C

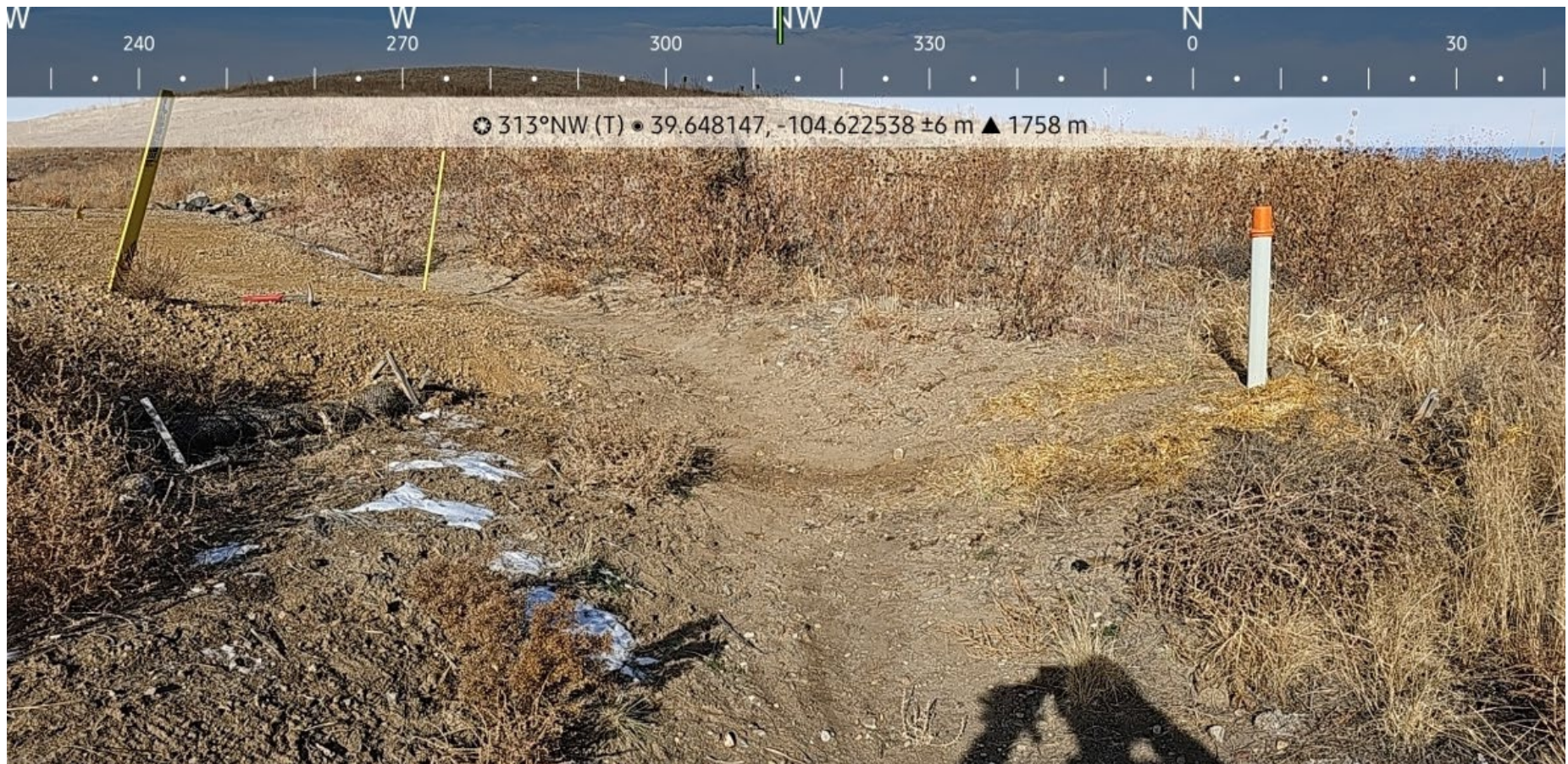


Exhibit D

CA: Operator shall install/repair BMPs in accordance with 1002.f.(2) to prevent erosion, run-on/ off of location. Comply with rule 1002.f. Stormwater Management.

CA Resolution: Operator repaired BMP's in accordance with 1002.f.(2) to prevent erosion, run-on/ off of location. Location is now in compliance with rule 1002.f. Stormwater Management.