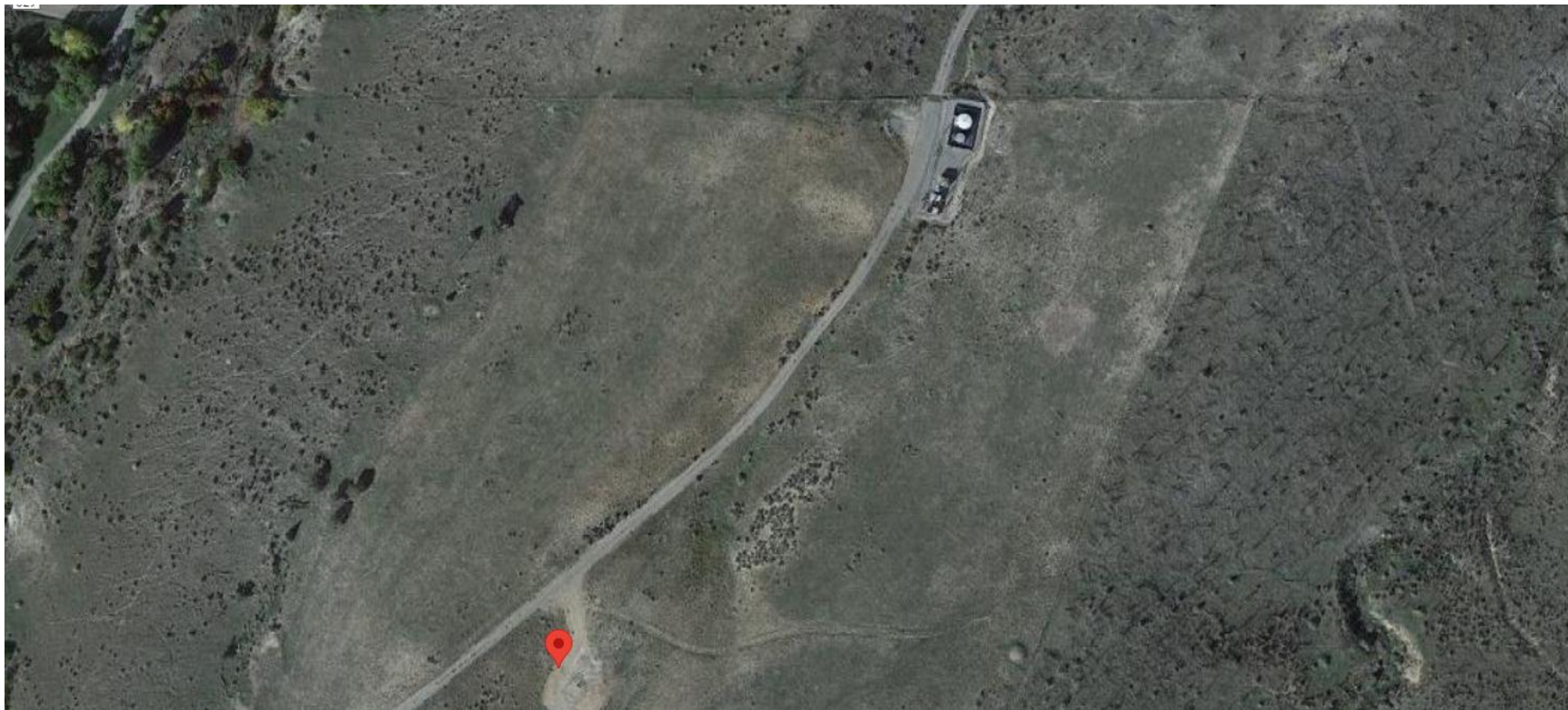


**Storm Water Management and Erosion control**  
**Location Name: TEP Rocky Mountain LLC MACKLEY 127-3 Pad**  
**Location # 324083**



**Location Overview: Location is within High  
Priority/Density/NSO/Black Bear Habitat areas. Location is  
approximately 181 yards from Spruce Creek.  
Section/Township/Range: 3 7S94W**

**Storm water Management and Erosion control**  
**Location Name: TEP Rocky Mountain LLC MACKLEY 127-3 Pad**  
**Location # 324083**



**North West corner of location.**



**North East corner of location.**



**South West corner of location.**



**South East corner of location.**