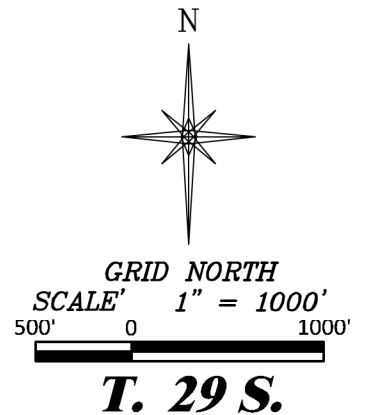
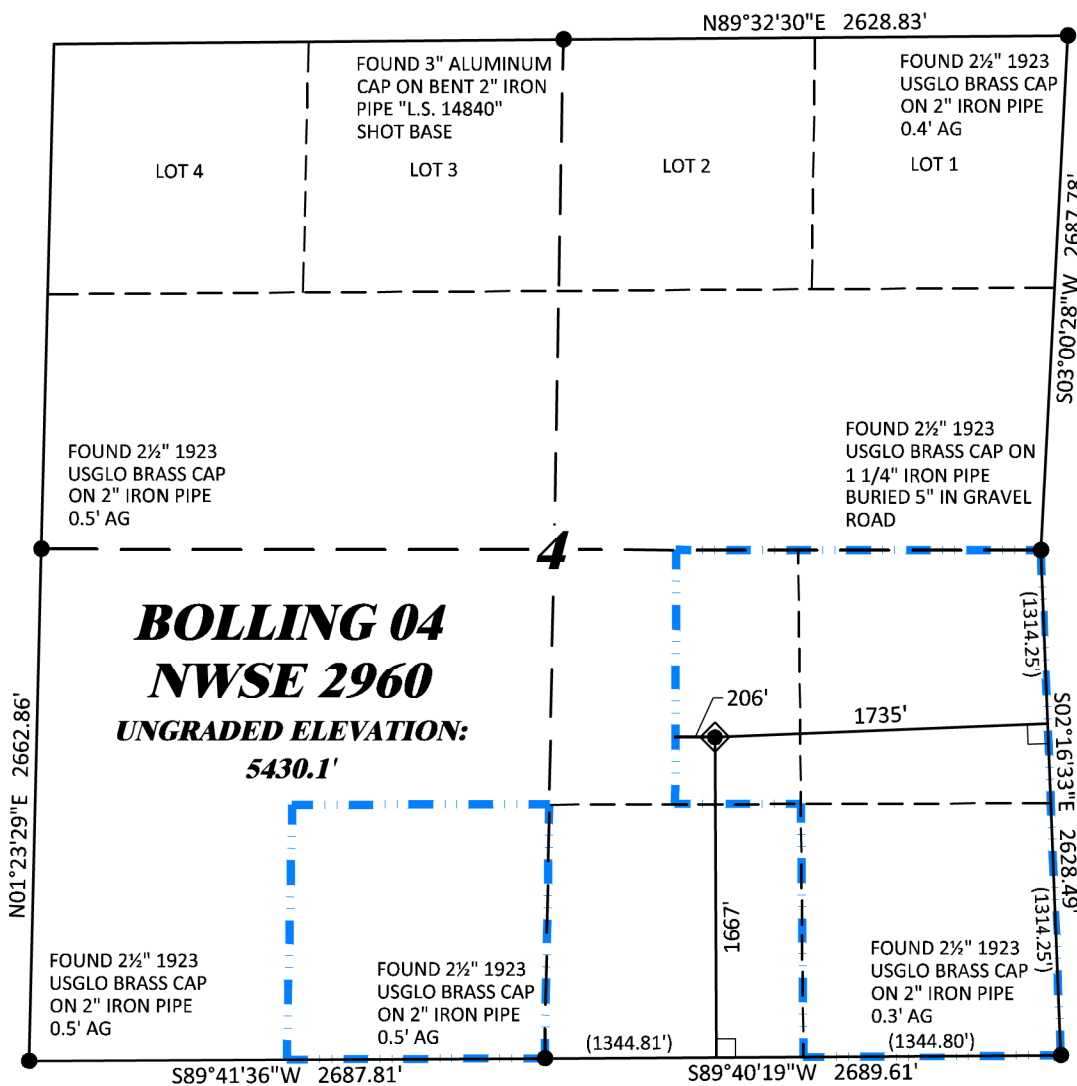


**R. 60 W.**



**SHL**  
**LATITUDE (NAD 83)**  
NORTH 37.547498 DEG.  
**LONGITUDE (NAD 83)**  
WEST 104.120770 DEG.  
**NORTHING (NAD 83)**  
1323678.93  
**EASTING (NAD 83)**  
3399842.13

**BASIS OF BEARINGS,  
ELEVATIONS & DATUM**

SPCS COLORADO SOUTH NAD 27  
BASED ON GPS OBSERVATIONS AND  
OPUS SOLUTION BEING A No. 5  
REBAR DRG CONTROL POINT  
"CP 33 2860" HAVING A NAD83(2011)  
POSITION OF:  
LAT 37° 33' 26.87" NORTH  
LONG 104° 06' 51.81" WEST  
NAVD88 ELEVATION: 5441.08'

THE SOUTH LINE OF THE SE¼ OF  
SECTION 4, MONUMENTED BY 2 1/2"  
BC'S AND BEARING S 89° 40' 19" W.

**NOTES**

1. GPS OPERATOR J. MONTOYA OBSERVED A PDOP OF 1.5.
2. ALL GPS OBSERVATIONS ARE IN COMPLIANCE WITH COGCC RULE No.215.
3. EXISTING IMPROVEMENTS WITHIN 2000' OF LOCATION. SEE LOC. DRAWING.
4. SURROUNDING SURFACE USE IS NATIVE BRUSH, NON CROP RANGELAND.

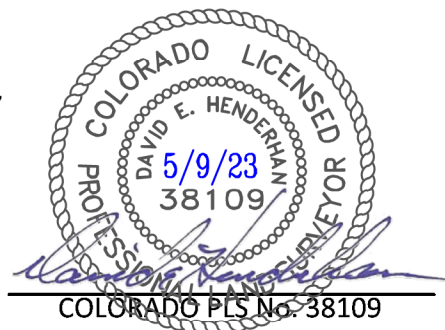
**LEGEND**

- ◆ WELL LOCATION
- └ DENOTES 90° TIE
- FOUND MONUMENT AS NOTED
- LEASE AREA

**SURVEYOR'S STATEMENT**

I, DAVID E. HENDERHAN, AN EMPLOYEE AND AGENT ON BEHALF OF D.R. GRIFFIN & ASSOCIATES, INC. STATE THE PLAT HEREON IS A CORRECT REPRESENTATION OF A SURVEY MADE UNDER MY SUPERVISION ON THE 16th DAY OF NOVEMBER, 2022 OF THE SHOWN BOLLING 04 NWSE 2960 AND THAT THE LOCATION HAS BEEN STAKED ON THE GROUND AS SHOWN ON THIS PLAT.

Notice: In accordance with Colorado State Law, any legal action based upon any defect in this survey plat must commence within three (3) years after first discovery of such defect. In no event, may any action based upon any defect in this survey plat be commenced more than ten (10) years from the date of certification shown hereon.



**BOLLING 04 NWSE 2960**

COLORADO PLS No. 38109

**DRG** **RIFFIN & ASSOCIATES, INC.**  
(307) 362-5028 1414 ELK ST., ROCK SPRINGS, WY 82901

**DRAWN: 12/19/22 - DWB**

**SCALE: 1" = 1000'**

**REVISED: 5/9/23 - JMB**

**DRG JOB No. 22207**

**ADDED LEASE AREA**

**EXHIBIT A**

**PLAT OF DRILLING LOCATION IN  
NWSE, SECTION 4, FOR  
BNL (ENTERPRISE) INC.**

**1667' F/SL, & 1735' F/EL, SECTION 4,  
T. 29 S., R. 60 W., 6TH P.M.,  
LAS ANIMAS COUNTY, COLORADO**