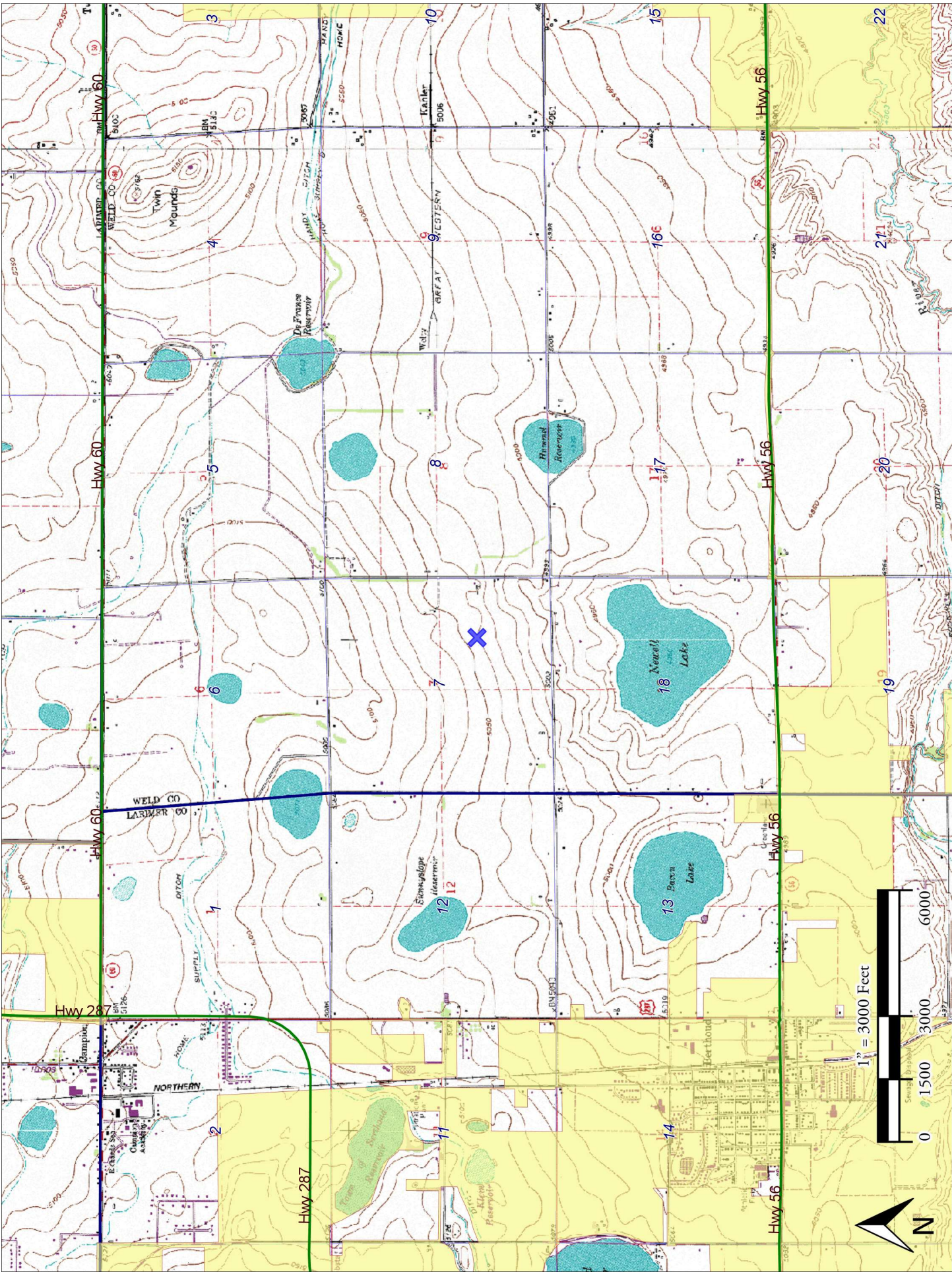


Topo Map





- Location of Spill
- Release Area

Location of Spill





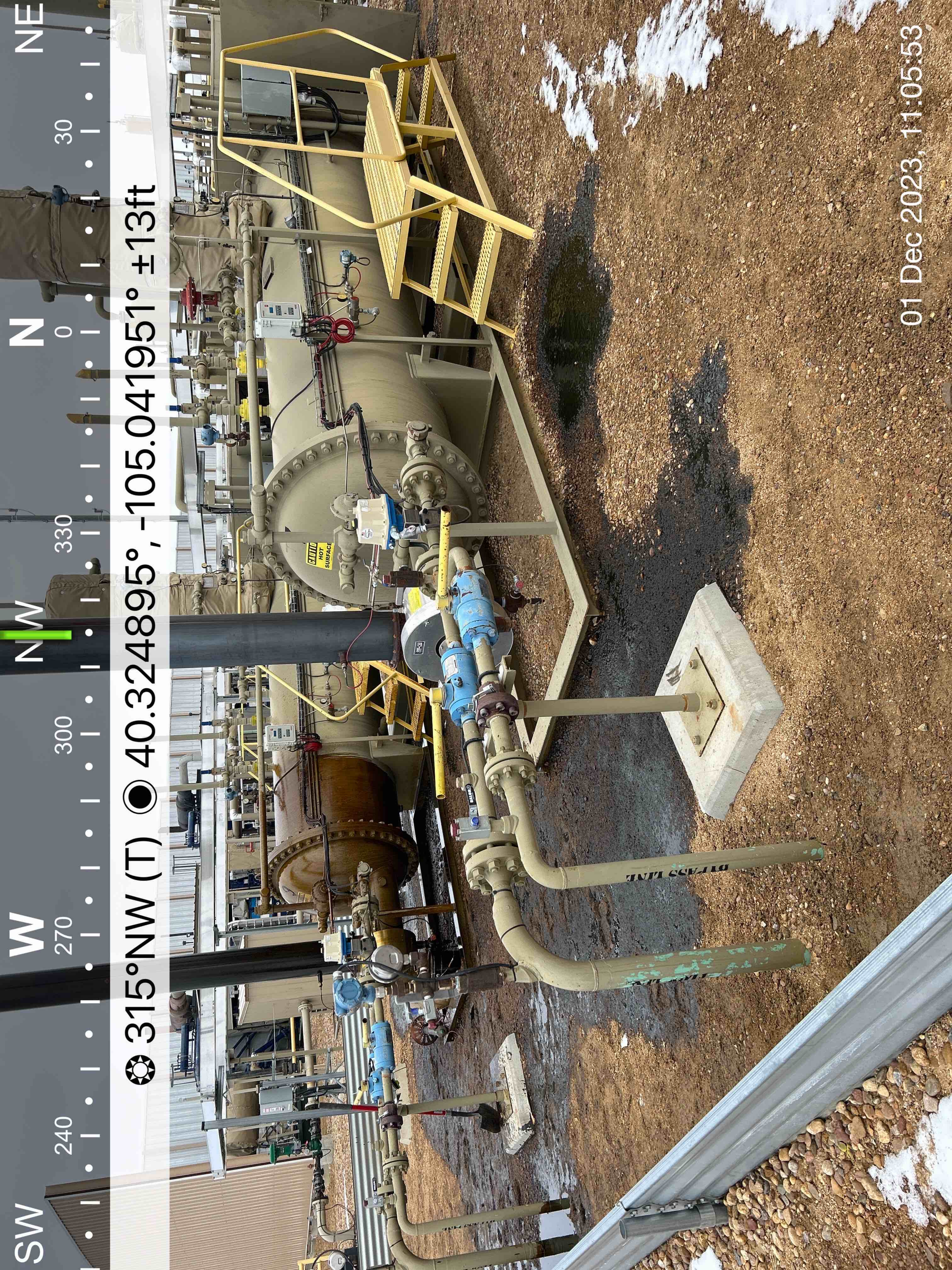


NW 300 330 0 NE 30 60 90 E

☀ 22°NE (T) ☉ 40.325011°, -105.041932° ±9ft

01 Dec 2023, 11:05:20





☉ 315°NW (T) ● 40.324895°, -105.041951° ±13ft

01 Dec 2023, 11:05:53



S

180

SW

210

240

W

270

NW

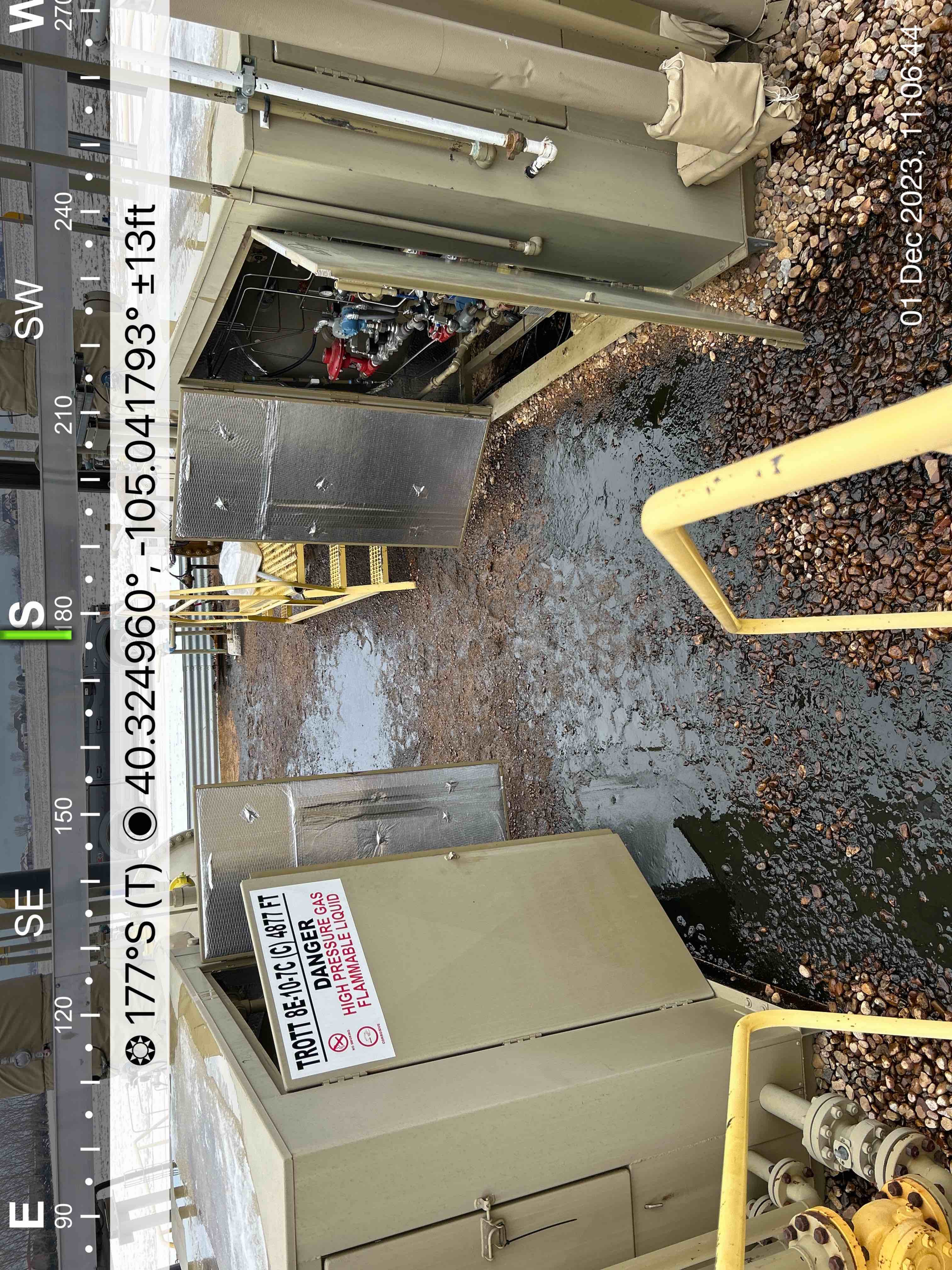
300

330

☀ 248°W (T) ☉ 40.324920°, -105.041800° ±13ft

01 Dec 2023, 11:06:23





E

90

SE

120

150

S

180

SW

210

240

W

270

☀ 177°S (T) ☉ 40.324960° , -105.041793° ±13ft

01 Dec 2023, 11:06:44





☀ 213°SW (T) ☉ 40.325004°, -105.041738° ±13ft



01 Dec 2023, 11:07:54





☉ 234°SW(T) ☉ 40.325012°, -105.041840° ±13ft

01-Dec-2023, 11:09:15





☀ 172°S (T) ● 40.325004°, -105.041827° ±13ft

**TROTT 8E-10-9N (N) 4925 FT**

---



NO SMOKING



CORROSIVE

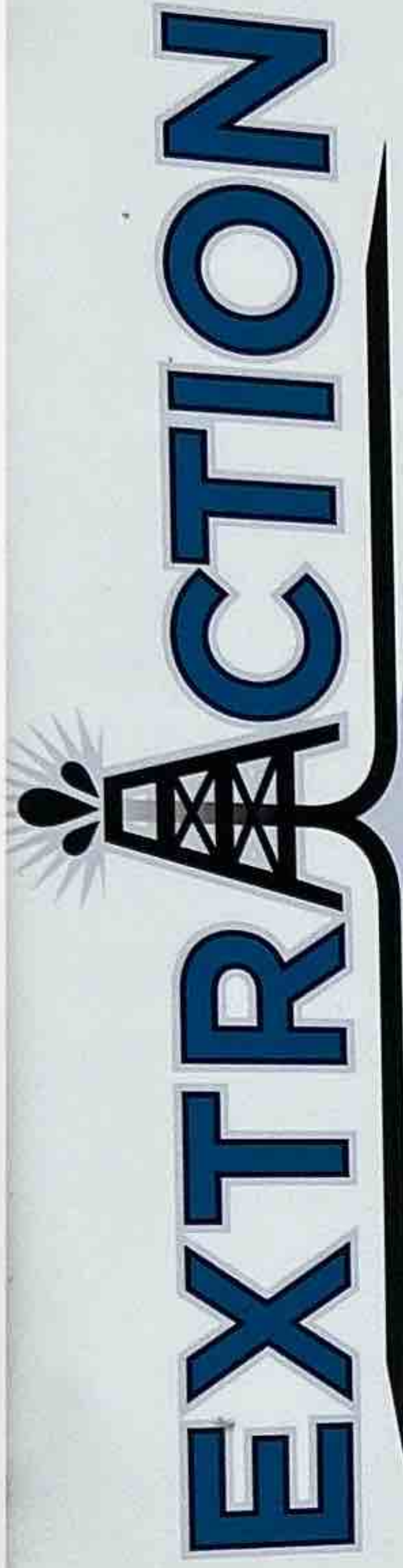
**DANGER**

**HIGH PRESSURE GAS  
FLAMMABLE LIQUID**



# West Elevation

☀ 89°E (T) ☉ 40.325019°, -105.040792° ±13ft



Oil & Gas

Emergency Number: 720.370.5540

TROTT/BERTHOUD PAD  
BATTERY ID 452694  
NESE SEC 7 R4N T68W  
WELD COUNTY, CO

TROTT 8E 10-9N  
API 05-123-45723  
TROTT 7W-10-2C  
API-05-123-45721  
TROTT 7W-10-10C  
API-05-123-45710  
TROTT 8E-10-11N  
API-05-123-45712

TROTT 7W-10-4N  
API-05-123-45725  
TROTT 7W-10-12N  
API-05-123-45702  
TROTT 8E-10-7C  
API-05-123-45731  
TROTT 8E-10-5N  
API-05-123-45714

TROTT 17E-20-19N  
API-05-123-45718  
TROTT 8E-10-3N  
API-05-123-45709  
TROTT 8E-10-1N  
API-05-123-45716

**DANGER**  
HIGH PRESSURE GAS  
EXTREMELY FLAMMABLE  
EXTREMELY TOXIC  
FLAMMABLE LIQUID  
POSSIBLE HYDROGEN SULFIDE  
POSSIBLE CORROSIVE HAZARD  
ACUTE AND CHRONIC HEALTH HAZARD



IN CASE OF FIRE  
OR MEDICAL EMERGENCY  
CALL 911

EXIT AT I-25 AND HWY 56, HEAD WEST TO CR3, N1.3, WEST INTO.

LAT 40.324434 LONG -105.041137

EXIT

01 Dec 2023, 11:11:38