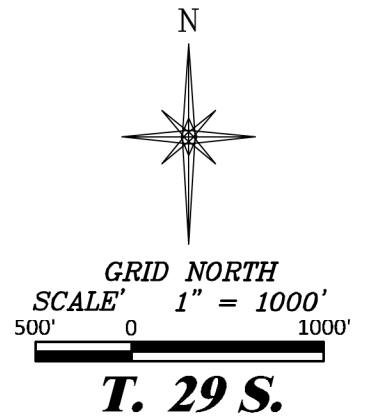
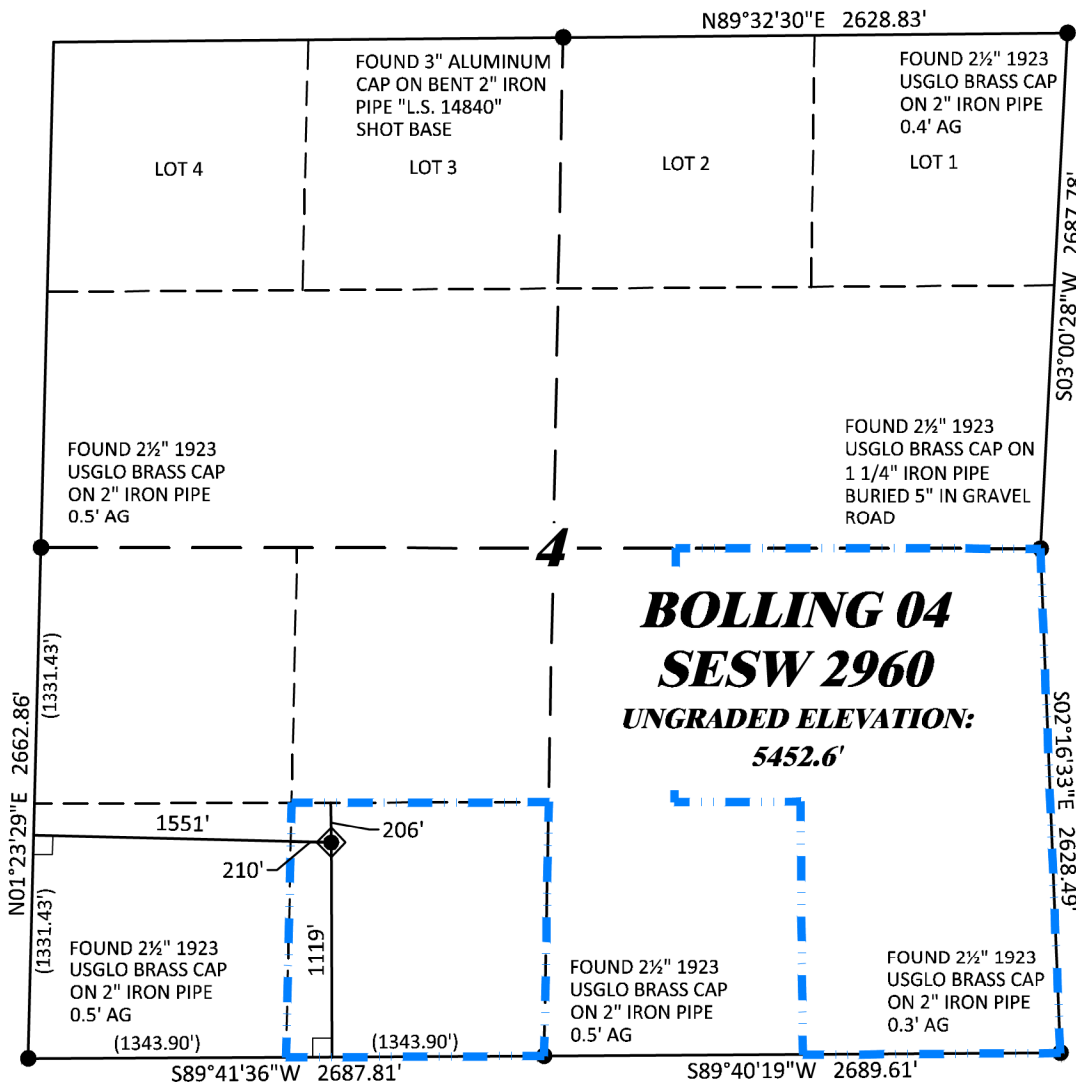


R. 60 W.



SHL
LATITUDE (NAD 83)
NORTH 37.546046 DEG.
LONGITUDE (NAD 83)
WEST 104.127684 DEG.
NORTHING (NAD 83)
1323120.67
EASTING (NAD 83)
3397845.79

**BASIS OF BEARINGS,
ELEVATIONS & DATUM**

SPCS COLORADO SOUTH NAD 27
BASED ON GPS OBSERVATIONS AND
OPUS SOLUTION BEING A No. 5
REBAR DRG CONTROL POINT
"CP 33 2860" HAVING A NAD83(2011)
POSITION OF:
LAT 37° 33' 26.87" NORTH
LONG 104° 06' 51.81" WEST
NAVD88 ELEVATION: 5441.08'

THE SOUTH LINE OF THE SW¼ OF
SECTION 4, MONUMENTED BY 2 1/2"
BC'S AND BEARING S 89°41'36" W.

NOTES

1. GPS OPERATOR J. MONTOYA OBSERVED A PDOP OF 1.9.
2. ALL GPS OBSERVATIONS ARE IN COMPLIANCE WITH COGCC RULE No.215.
3. EXISTING IMPROVEMENTS WITHIN 2000' OF LOCATION. SEE LOC. DRAWING.
4. SURROUNDING SURFACE USE IS NATIVE BRUSH, NON CROP RANGELAND.

LEGEND

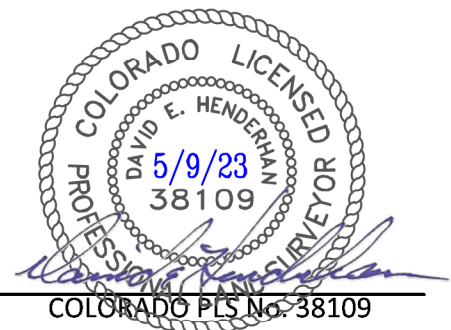
- ◆ WELL LOCATION
- └ DENOTES 90° TIE
- FOUND MONUMENT AS NOTED
- LEASE AREA

SURVEYOR'S STATEMENT

I, DAVID E. HENDERHAN, AN EMPLOYEE AND AGENT ON BEHALF OF D.R. GRIFFIN & ASSOCIATES, INC. STATE THE PLAT HEREON IS A CORRECT REPRESENTATION OF A SURVEY MADE UNDER MY SUPERVISION ON THE 15th DAY OF JANUARY, 2022 OF THE SHOWN BOLLING 04 SESW 2960 AND THAT THE LOCATION HAS BEEN STAKED ON THE GROUND AS SHOWN ON THIS PLAT.

Notice: In accordance with Colorado State Law, any legal action based upon any defect in this survey plat must commence within three (3) years after first discovery of such defect. In no event, may any action based upon any defect in this survey plat be commenced more than ten (10) years from the date of certification shown hereon.

BOLLING 04 SESW 2960



DRG **DAVID E. HENDERHAN & ASSOCIATES, INC.**
(307) 362-5028 1414 ELK ST., ROCK SPRINGS, WY 82901

DRAWN: 3/22/22 - JMB

SCALE: 1" = 1000'

REVISED: 5/9/23 - DWB

DRG JOB No. 22206

ADDED LEASE AREA

EXHIBIT A

**PLAT OF DRILLING LOCATION IN
SESW, SECTION 4, FOR
BNL (ENTERPRISE) INC.**

**1119' F/SL, & 1551' F/WL, SECTION 4,
T. 29 S., R. 60 W., 6TH P.M.,
LAS ANIMAS COUNTY, COLORADO**