

**SPONTANEOUS POTENTIAL**  
Millivolts

**DEPTH**

**RESISTIVITY**  
Ohms m<sup>2</sup>/m

**CONDUCTIVITY**  
Millimhos/m



00041810

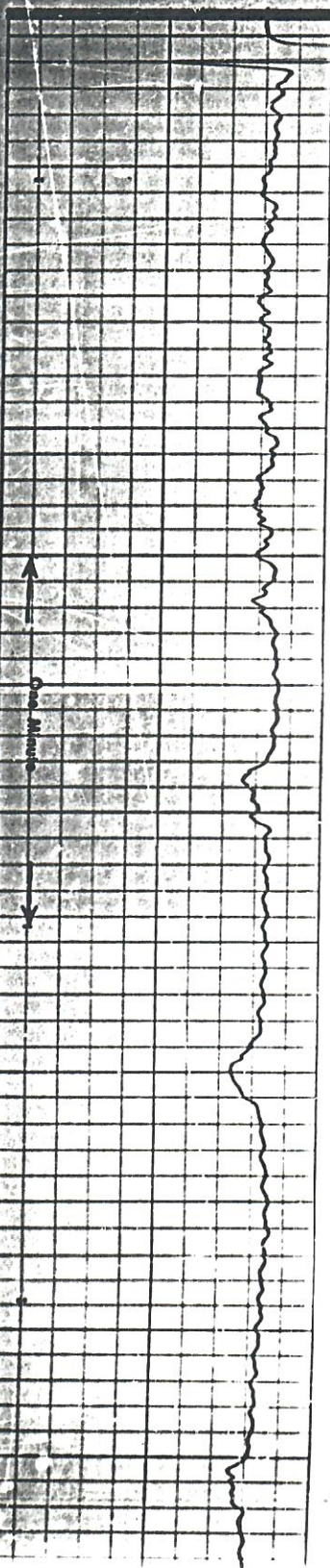
10  
- | +

16" NORMAL

INDUCTION CONDUCTIVITY  
40" SPACING

INDUCTION RESISTIVITY  
40" SPACING

2"=100



200

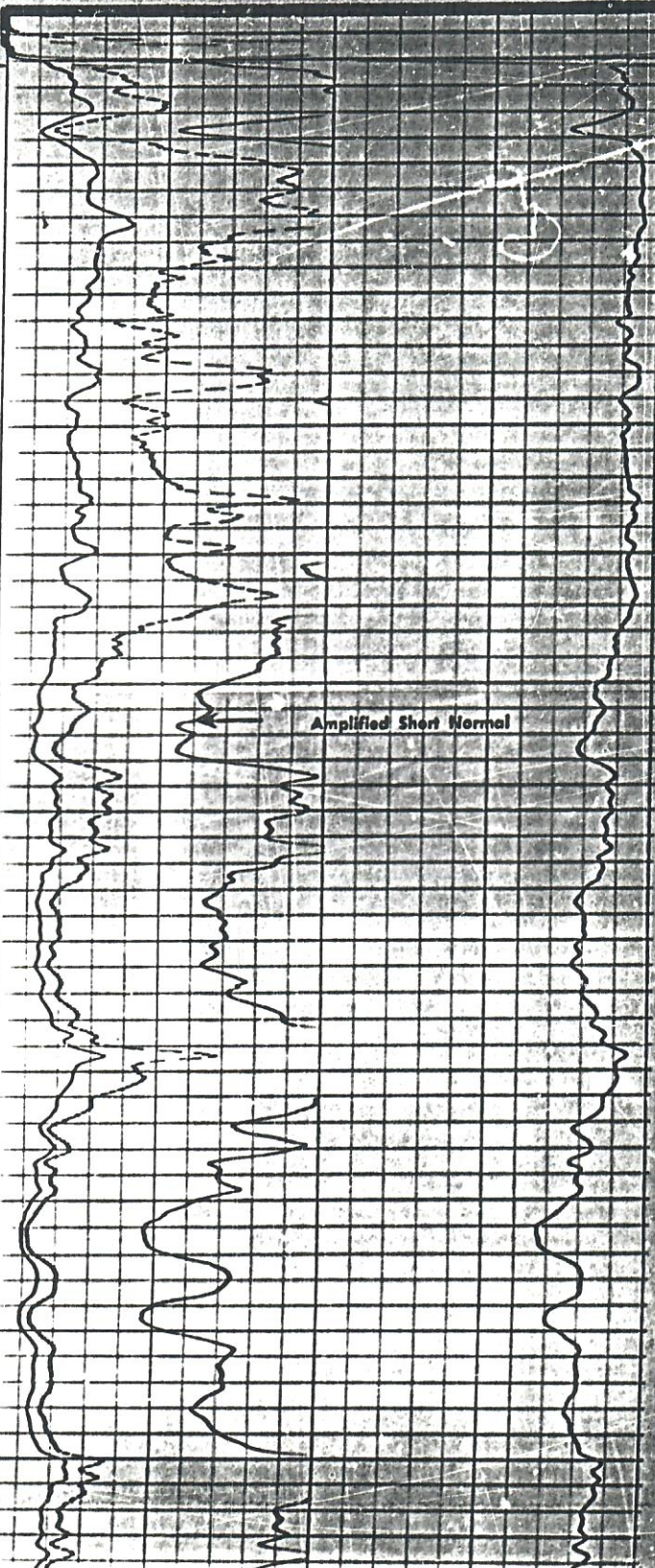
300

400

500

600

700



Amplified Short Normal



