

**RADIAL BOND TOOL
GAMMA RAY
CCL**

Company CIVITAS
Well ARISTOCRAT ANGUS 14-04C
Field WATTENBERG
County WELD State CO

Location: API # : 05-123-16571
LAT 40.249398 LONG -104.675384
SW/SW
Permanent Datum GL Elevation 4844'
Log Measured From KB 13' Elevation KB. 4857'
Drilling Measured From KB Elevation D.F. 4856'
G.L. 4844'

Date NOVEMBER 6 2023
Run Number ONE
Depth Driller 7320'
Depth Logger 5000'
Bottom Logged Interval 4996'
Top Log Interval SURFACE
Open Hole Size 7.875"
Type Fluid WATER
Density / Viscosity N/A
Max. Recorded Temp. N/A
Estimated Cement Top N/A
Time Well Ready ON ARRIVAL
Time Logger on Bottom N/A
Equipment Number 3814
Location GREELEY
Recorded By MICHAEL RAMSEY
Witnessed By HECTOR TERRAZAS

Borehole Record		Tubing Record					
Run Number	Bit	From	To	Size	Weight	From	To

Casing Record	Size	Wgt/Ft	Top	Bottom
Surface String	8.625"	24#	SURFACE	662'
Prot. String				
Production String	4.5"	11.6#	SURFACE	7311'
Liner				

<<< Fold Here >>>

All interpretations are opinions based on inferences from electrical or other measurements and we cannot and do not guarantee the accuracy or correctness of any interpretation, and we shall not, except in the case of gross or willful negligence on our part, be liable or responsible for any loss, costs, damages, or expenses incurred or sustained by anyone resulting from any interpretation made by any of our officers, agents or employees. These interpretations are also subject to our general terms and conditions set out in our current Price Schedule.

Comments

**RAN RBL TO VERIFY CEMENT BOND
WELL LOADED UPON ARRIVAL
LOG NOT CORRELATED**

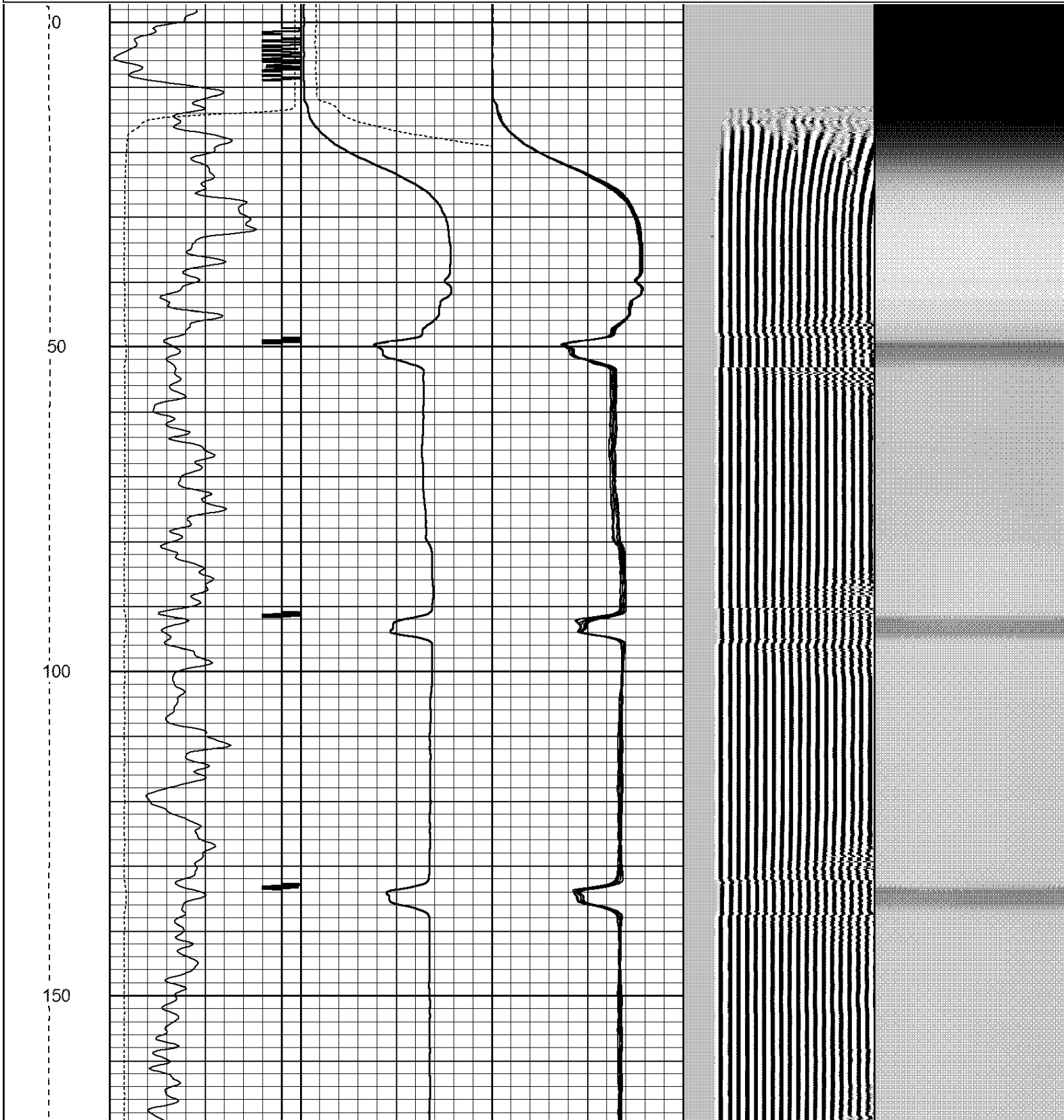
Sensor	Offset (ft)	Schematic	Description	Len (ft)	OD (in)	Wt (lb)
			CHD1_4	1.00	1.44	1.00

HEADVOL I	15.02					
IntTemp	13.60					
WVF3FT	10.35		RBT-Probe (Base) Probe Radii Bond Tool with Digital Telemetry	8.92	2.75	90.00
WVFCAL	10.35					
WVFS1	10.35					
WVFS2	10.35					
WVFS3	10.35					
WVFS4	10.35					
WVFS5	10.35					
WVFS6	10.35					
WVFS7	10.35					
WVFS8	10.35					
WVF5FT	9.35					
CNLSC	6.00					
CNSSC	5.17		CNT-Probe_B (275) 6 bow centralizer	1.77	2.75	40.00
CCL	3.64					
GR	0.90		GR-Probe (275) Probe 2.75"	4.33	2.75	30.00

Dataset: aristocrat angus 14-04c.db: field/well/run1/pass4
 Total Length: 16.02 ft
 Total Weight: 161.00 lb
 O.D.: 2.75 in

Database File: aristocrat angus 14-04c.db
 Dataset Pathname: pass4
 Presentation Format: ips_rbt

LSPD	200	TT (usec)	1000	0	AMP (mV)	100	0	AMPS1	100	200	VDL	1200	1	Cement Map	8
(ft/min)	-9	CCL	1	0	AMPx5 (mV)	20	0	AMPS2	100				100		1
0	250	GR (GAPI)	150					AMPS3	100						
		GR (GAPI)	400					AMPS4	100						
								AMPS5	100						
								AMPS6	100						
								AMPS7	100						
								AMPS8	100						

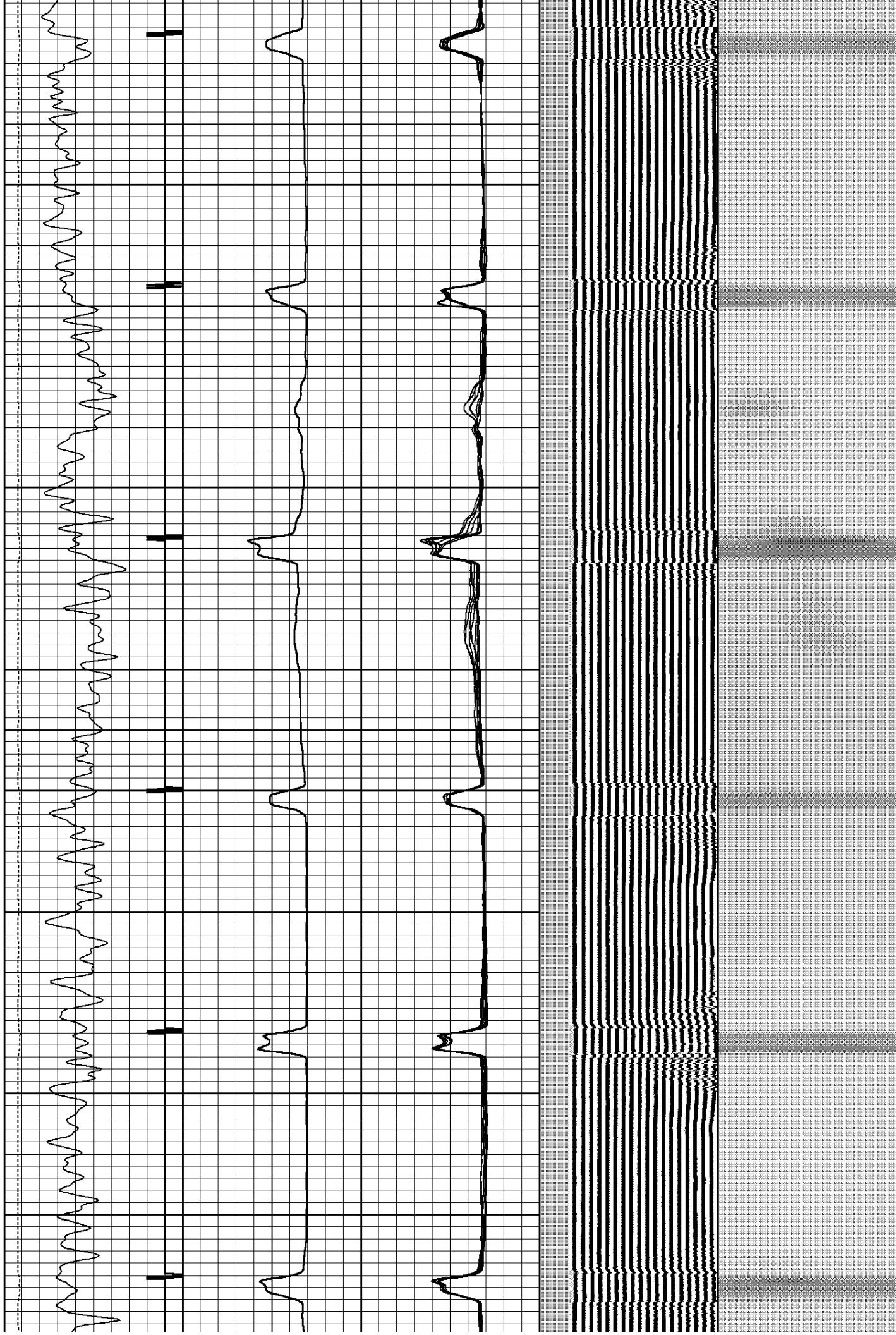


200

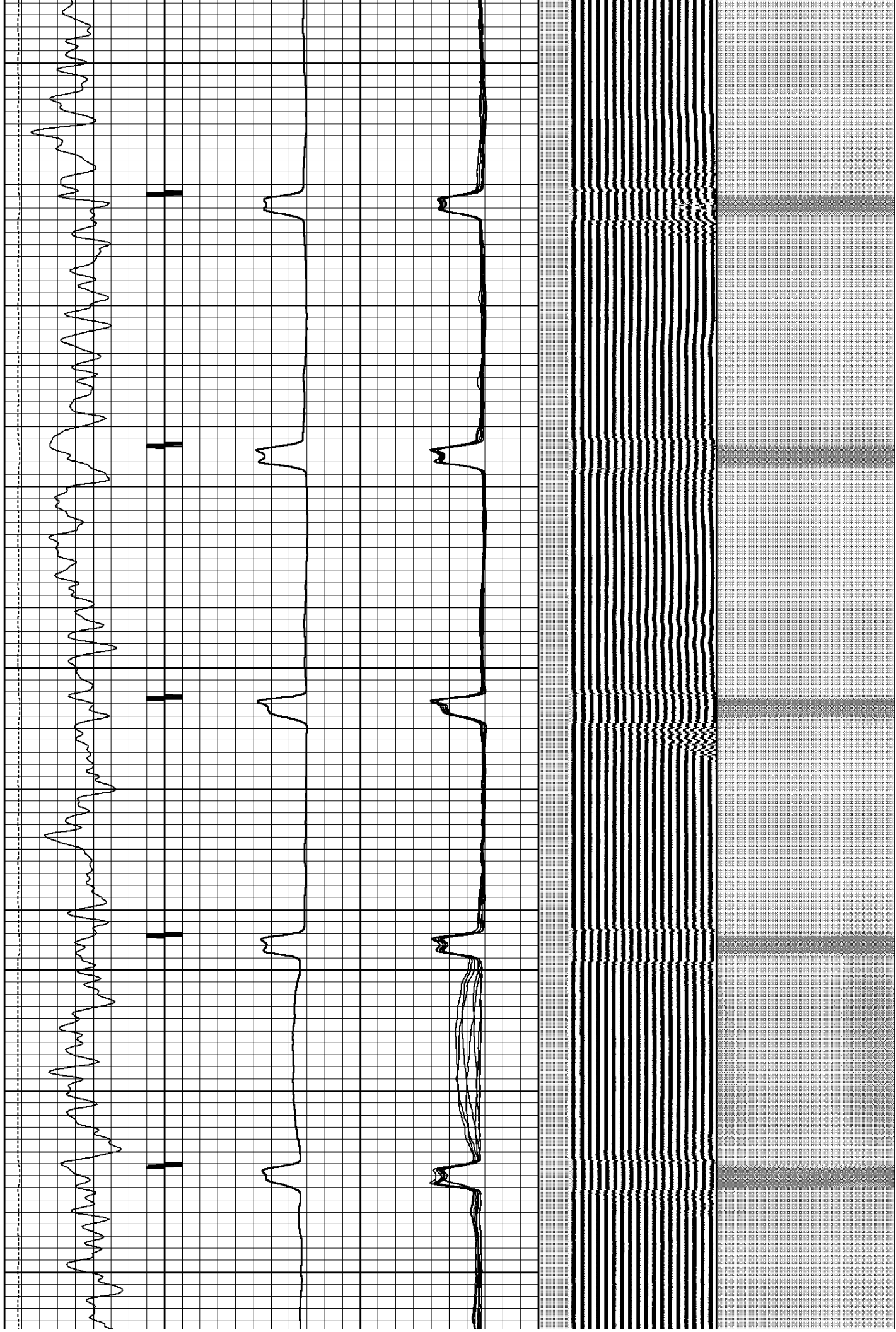
250

300

350



400
450
500
550
600

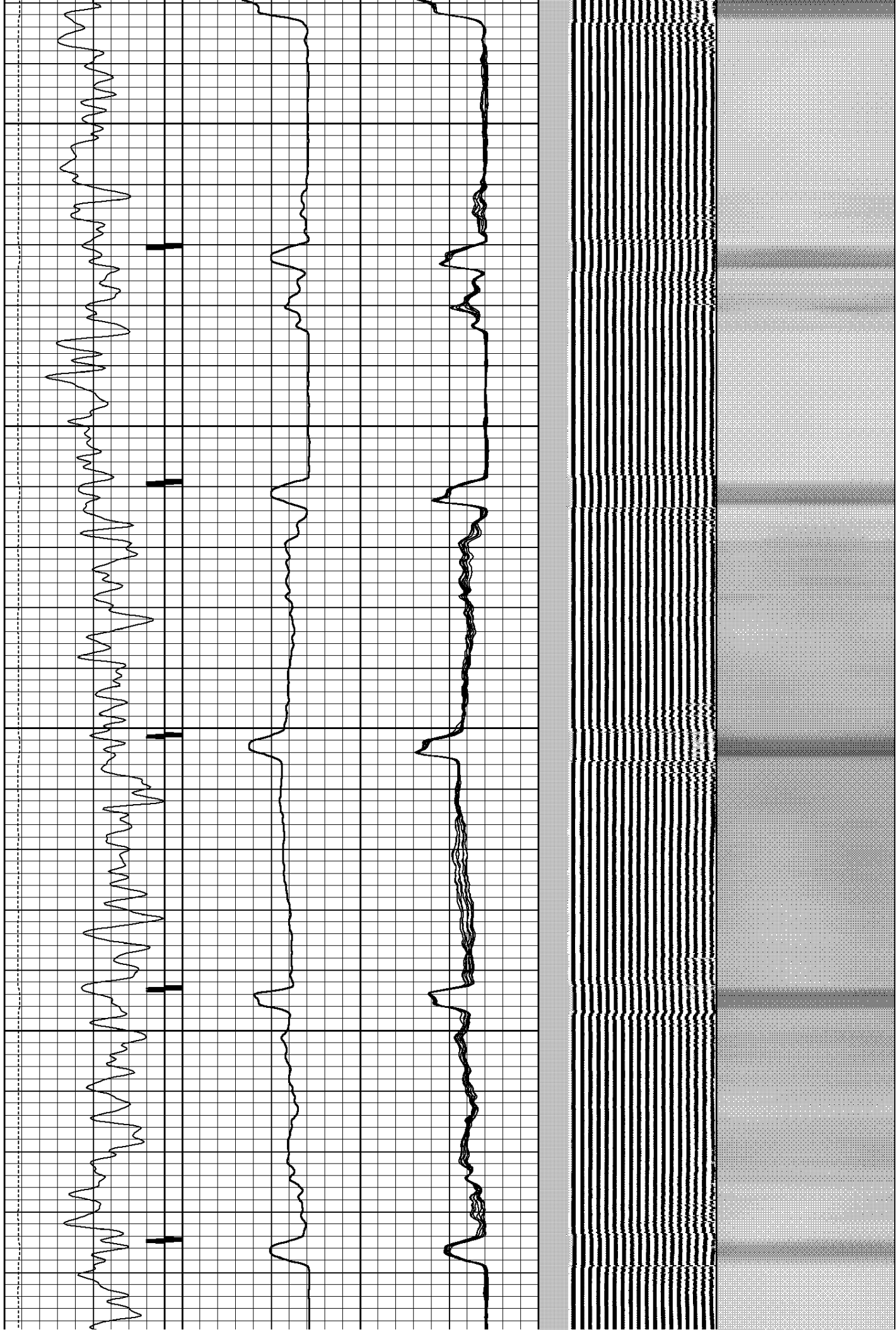


850

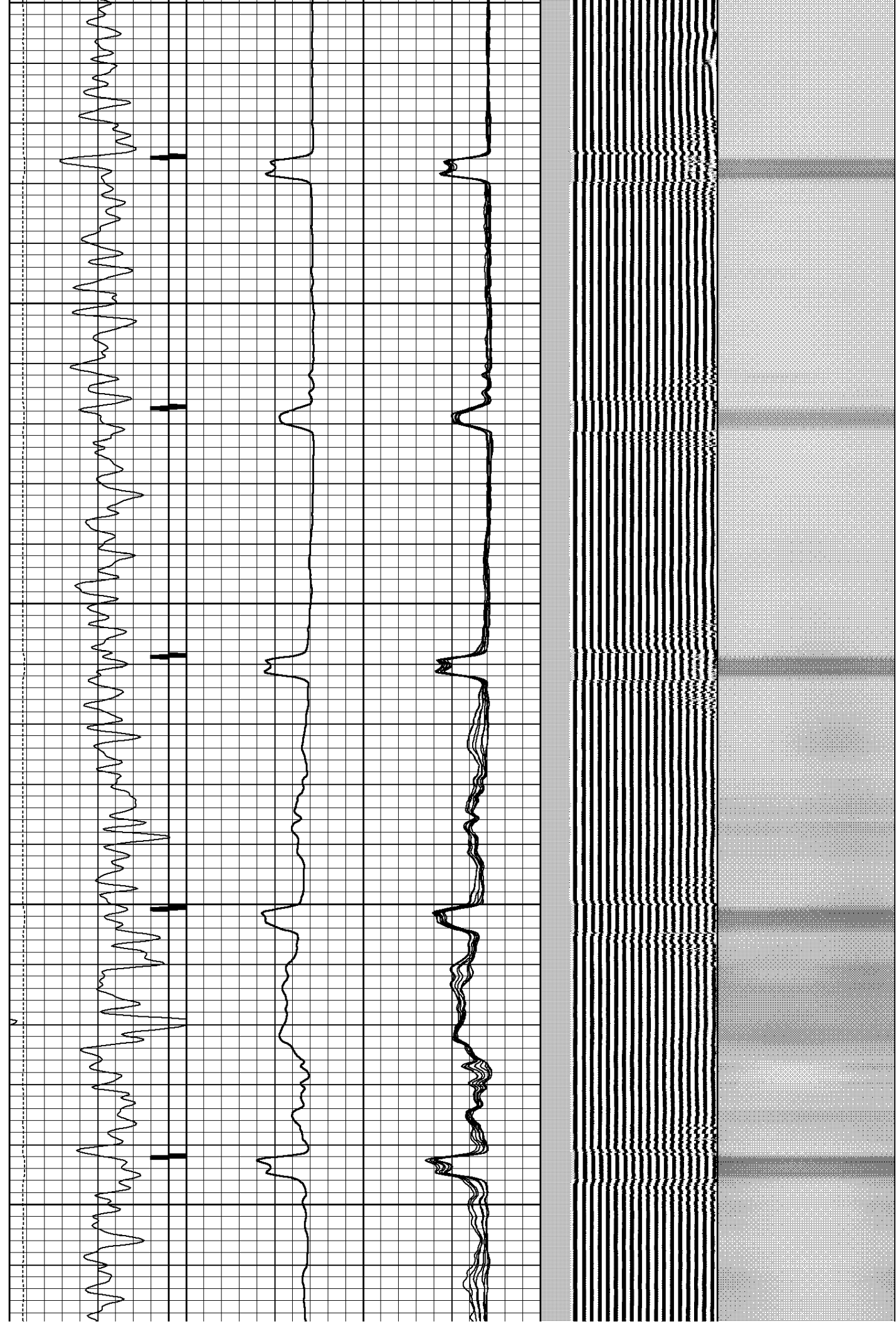
900

950

1000



1050
1100
1150
1200
1250

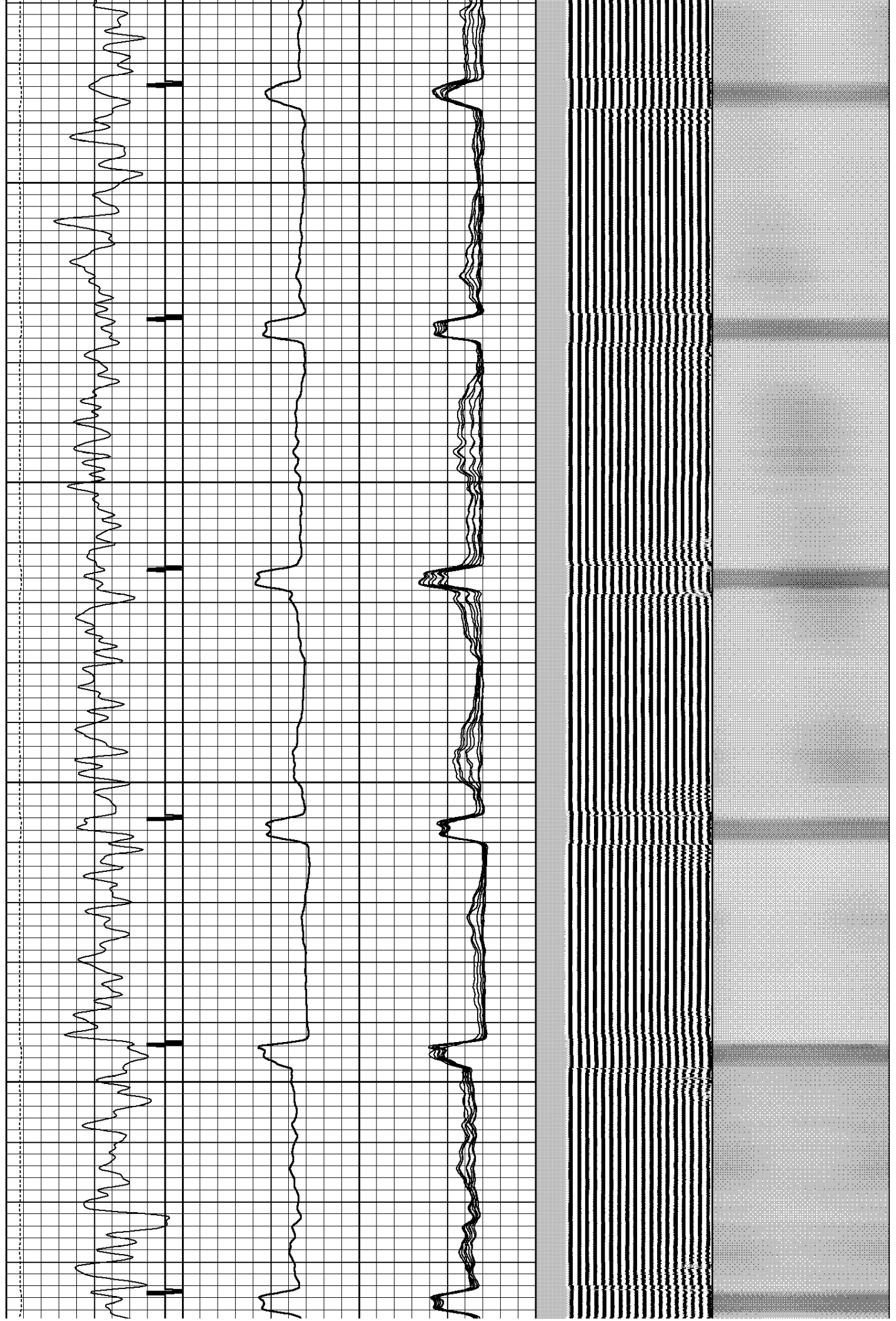


1300

1350

1400

1450



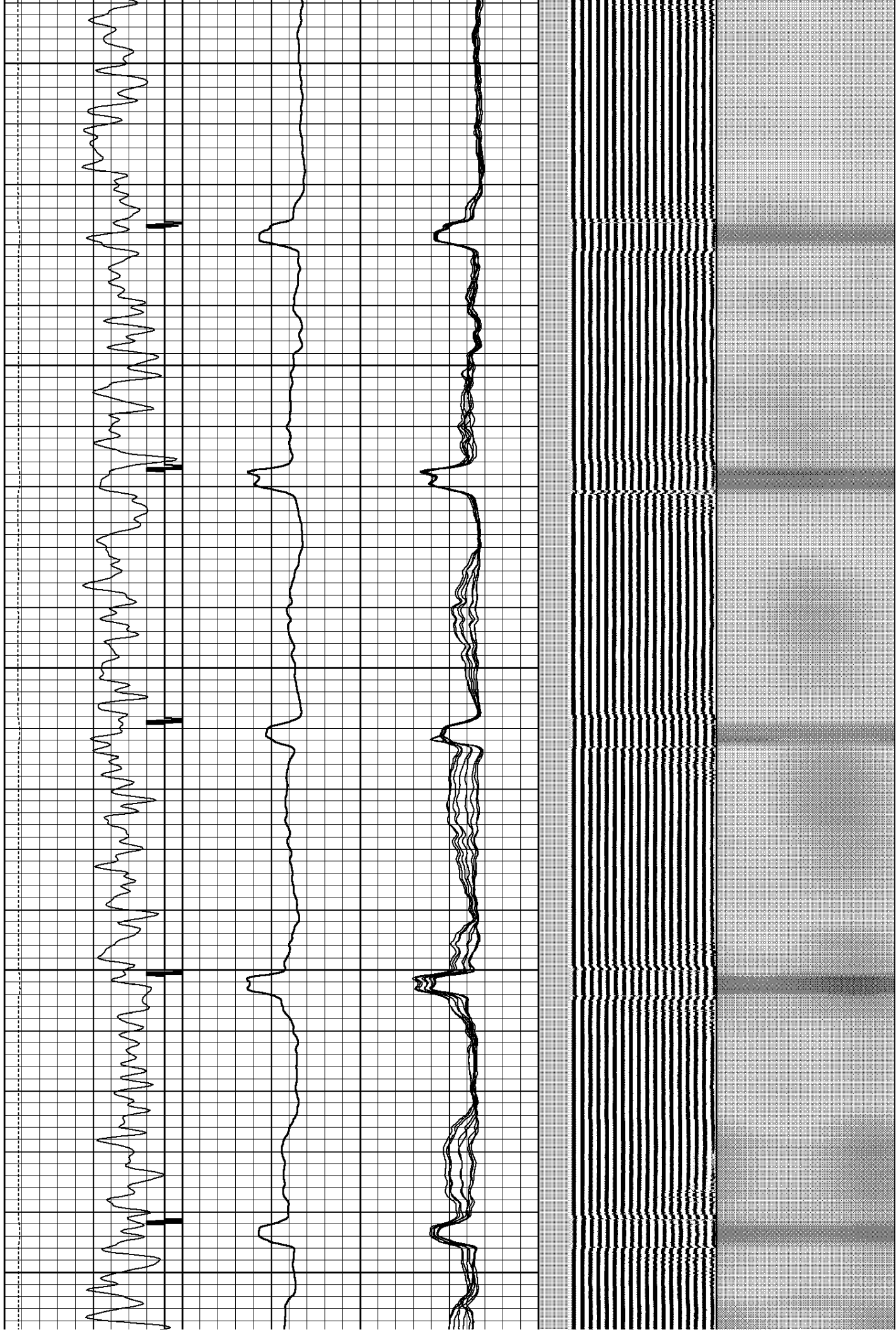
1500

1550

1600

1650

1700



1750

1800

1850

1900



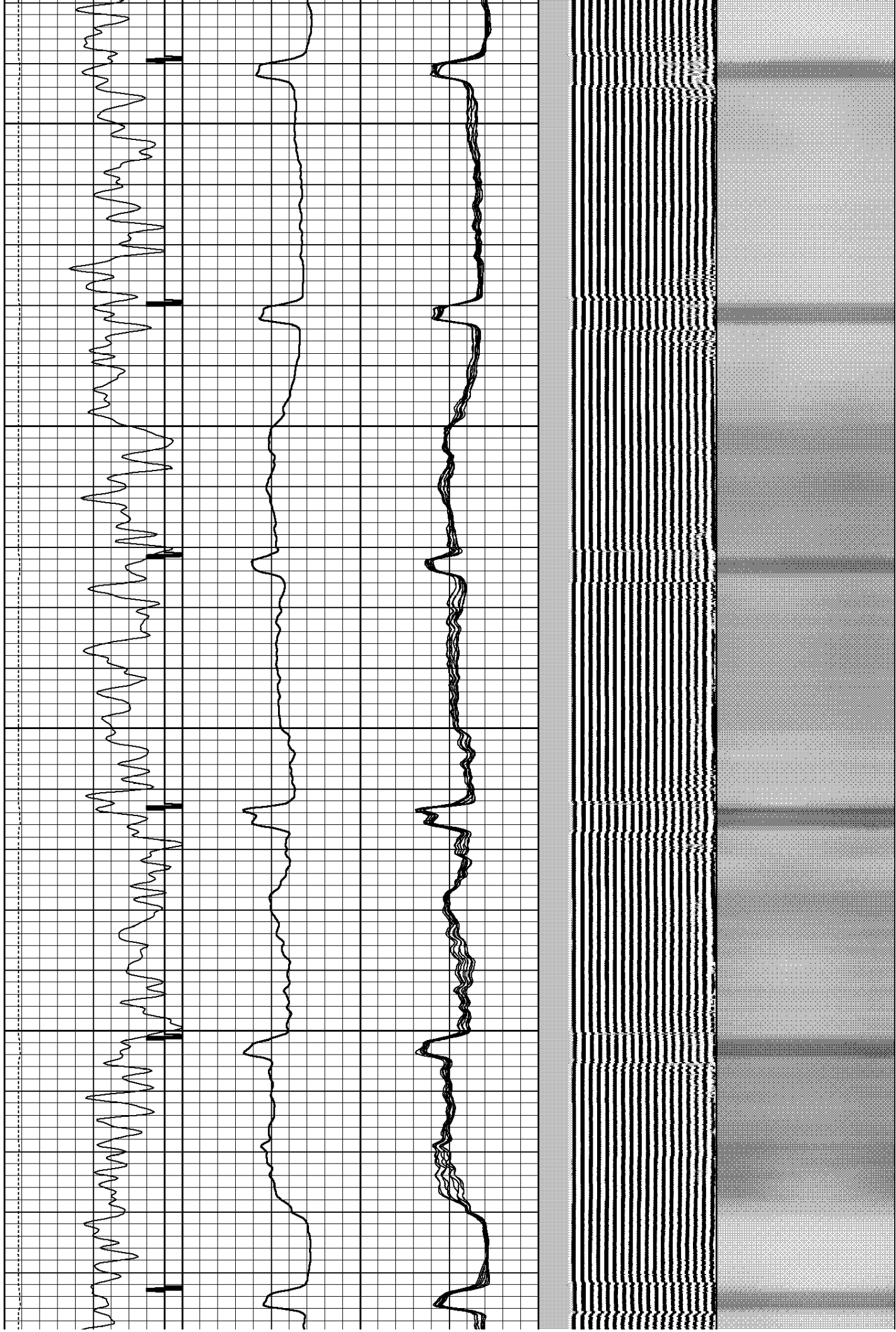
1950

2000

2050

2100

2150



2150
2200
2250
2300
2350

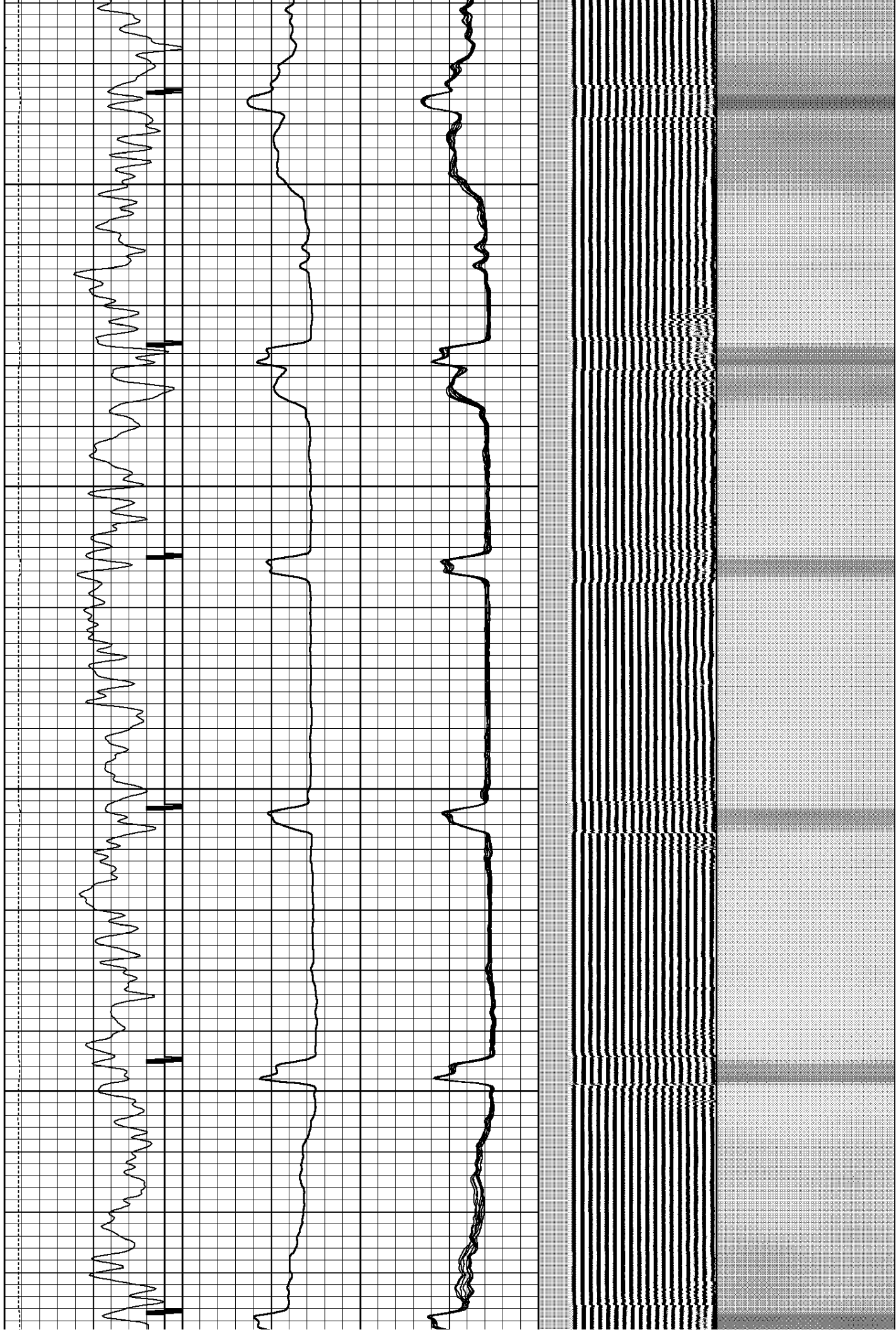


2400

2450

2500

2550



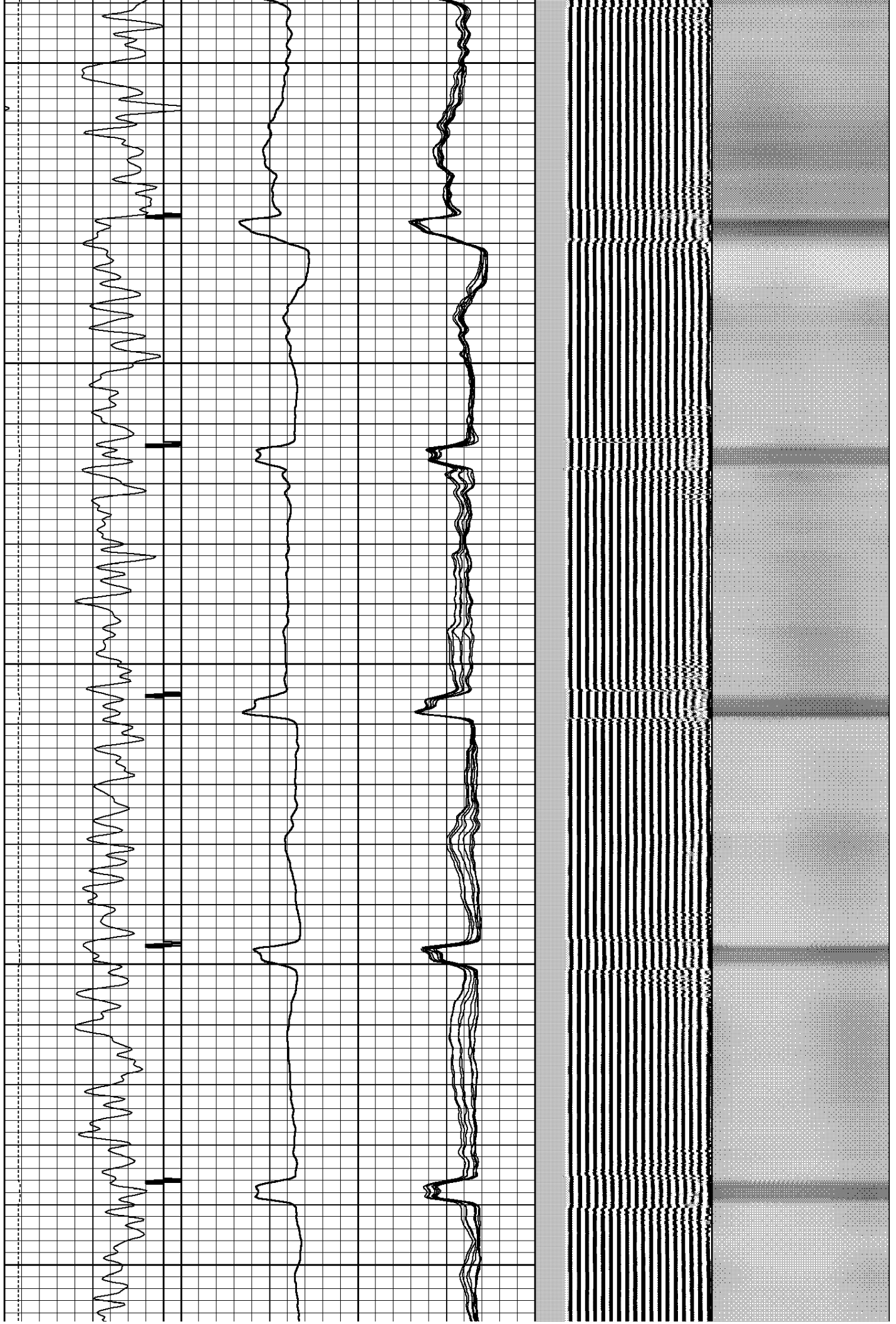
2600

2650

2700

2750

2800

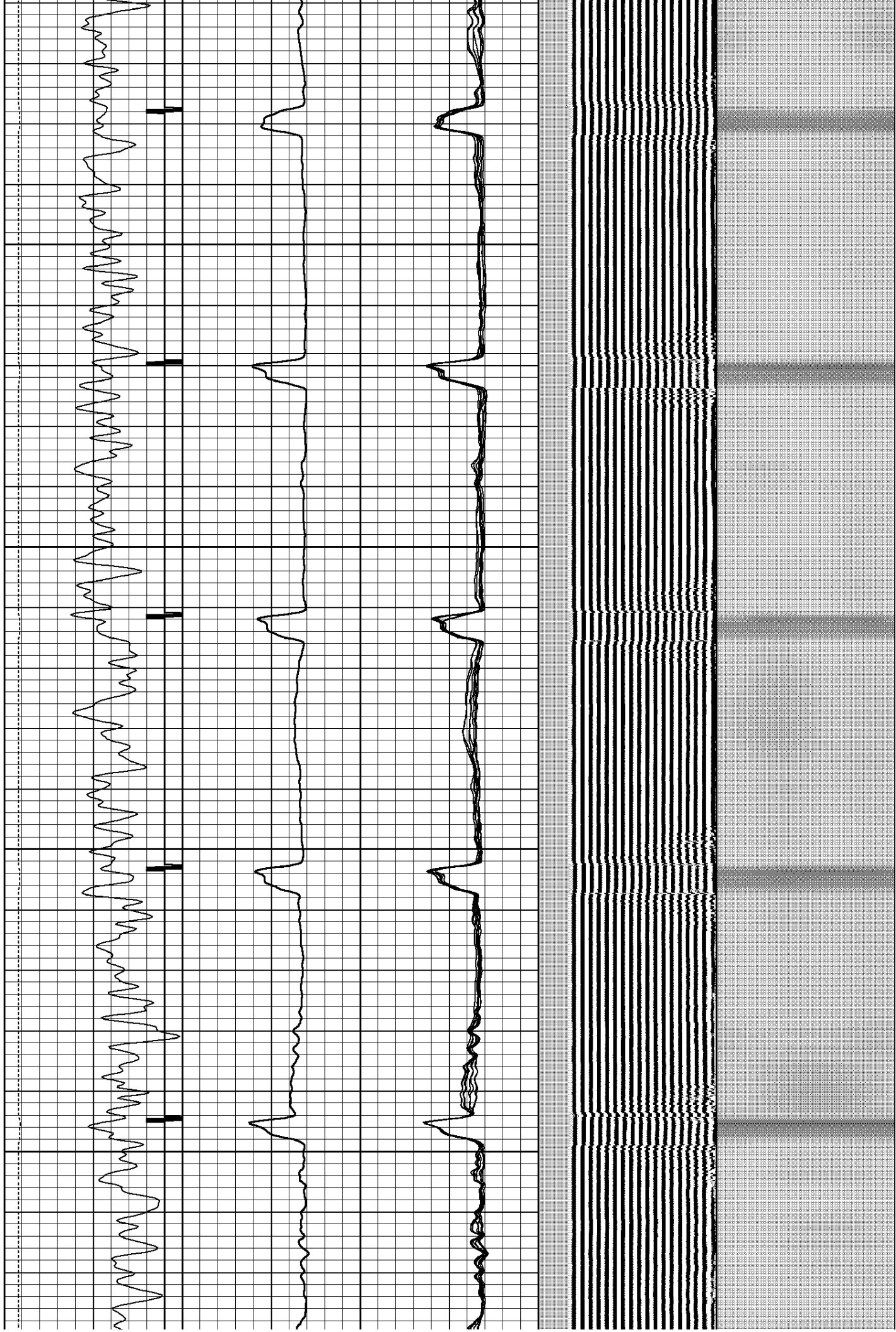


2850

2900

2950

3000



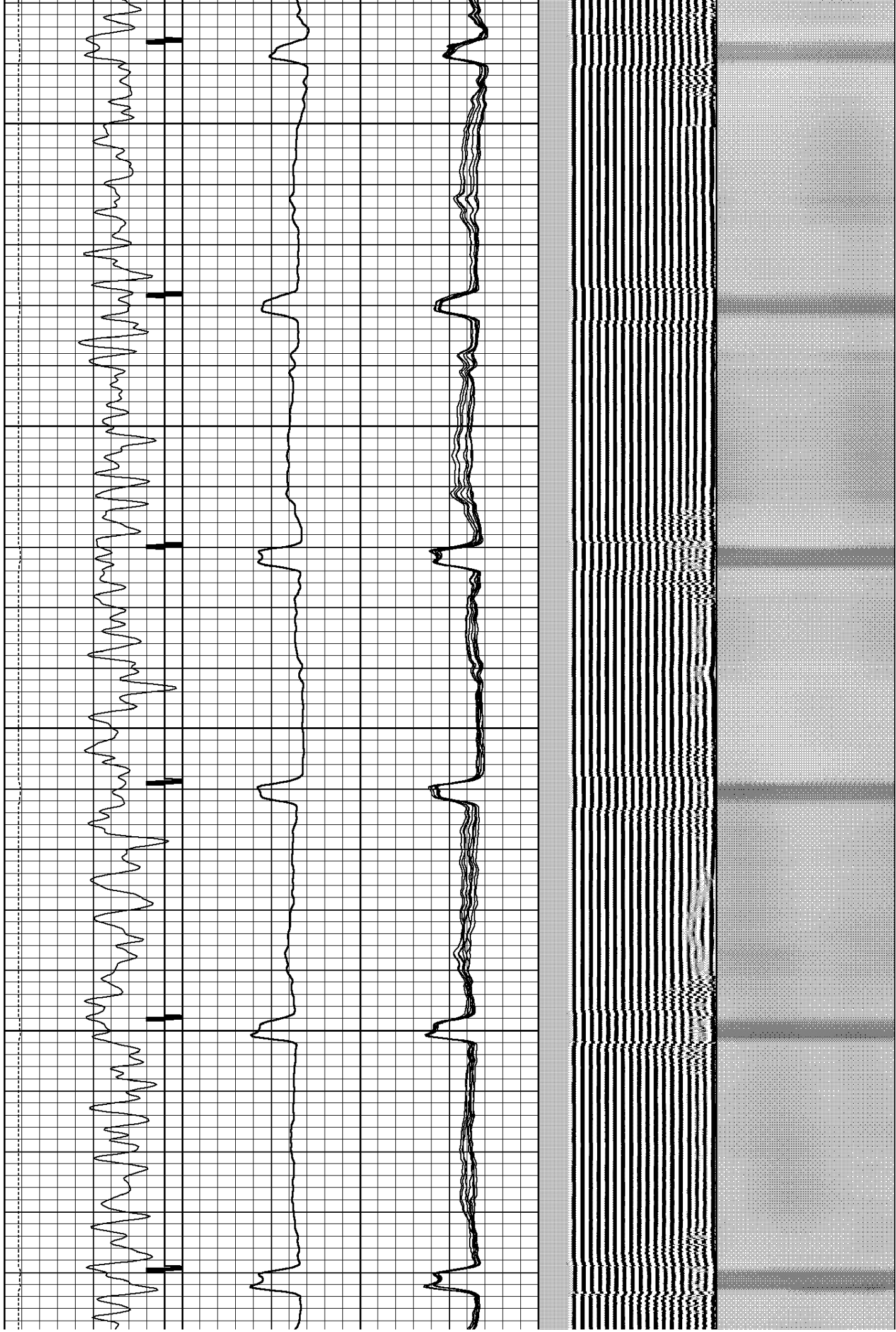
3050

3100

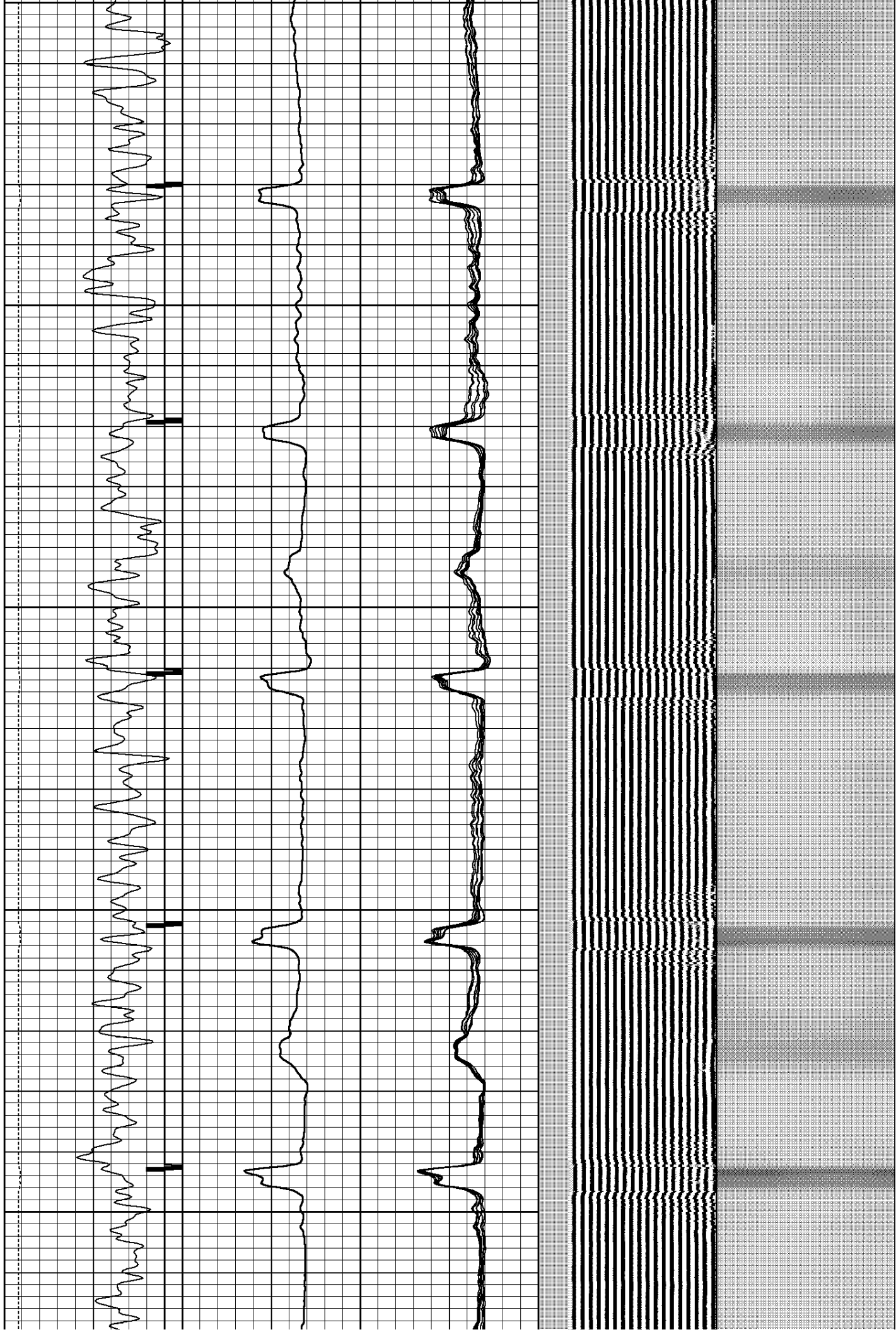
3150

3200

3250



3250
3300
3350
3400
3450

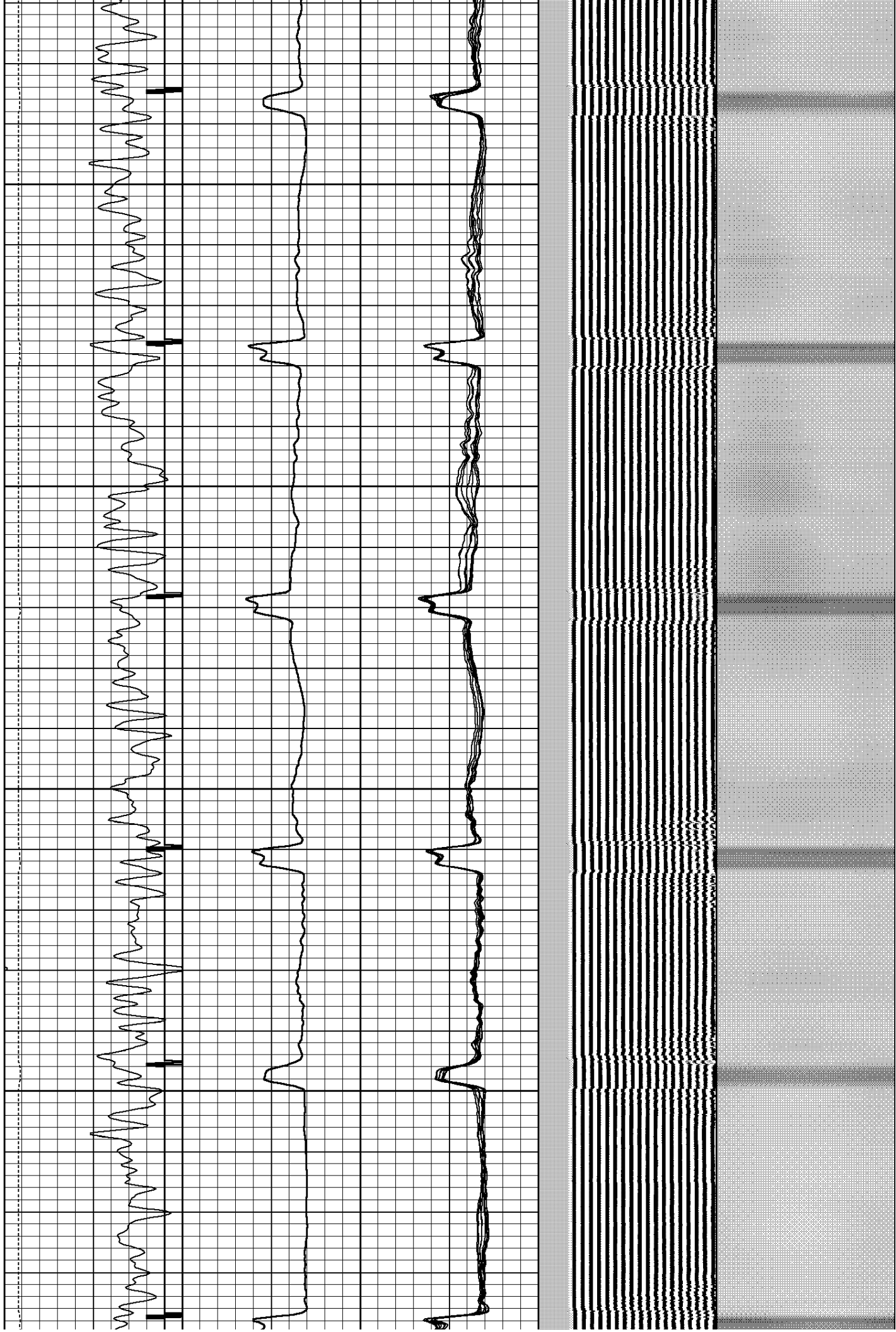


3500

3550

3600

3650



3700

3750

3800

3850

3900

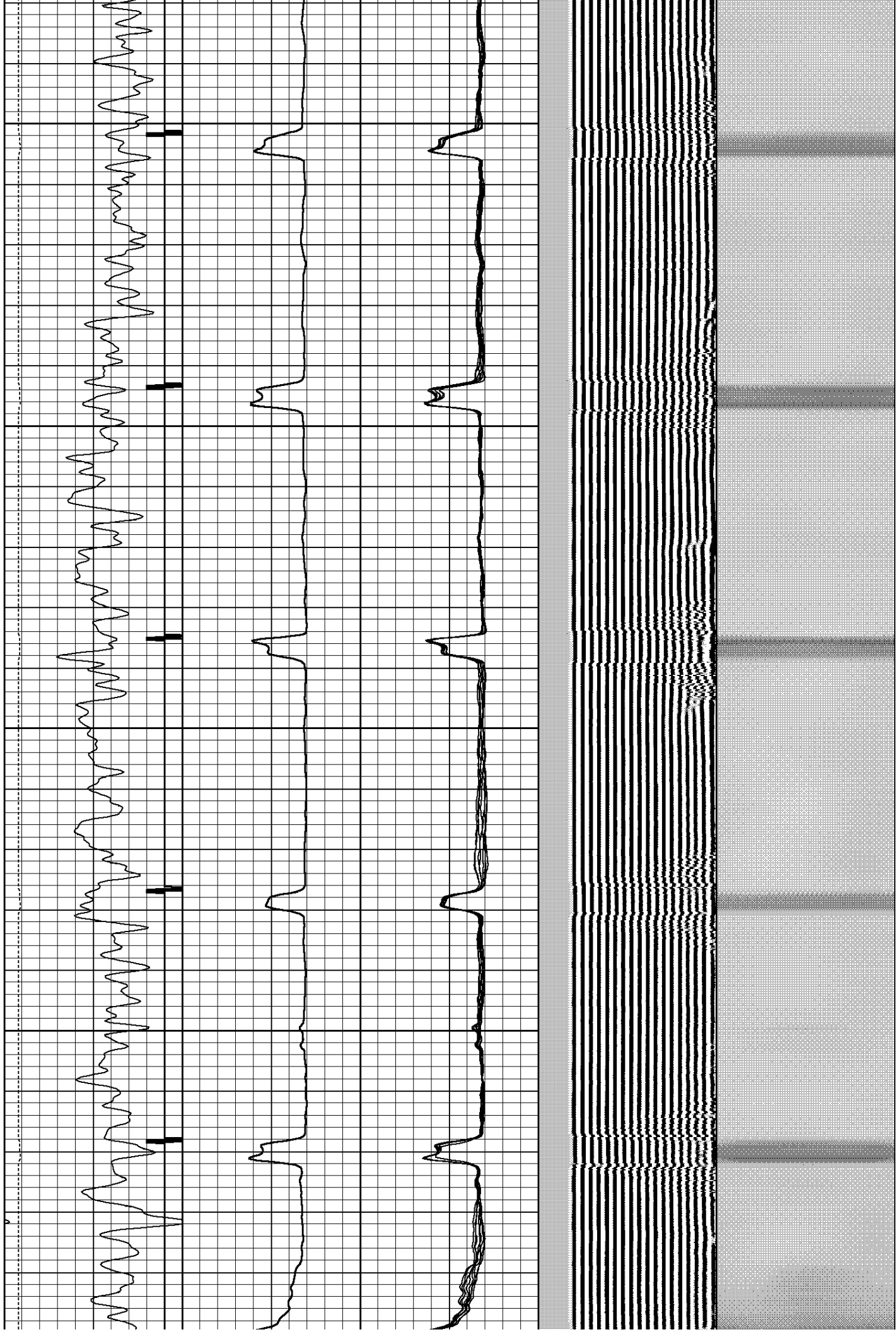


4150

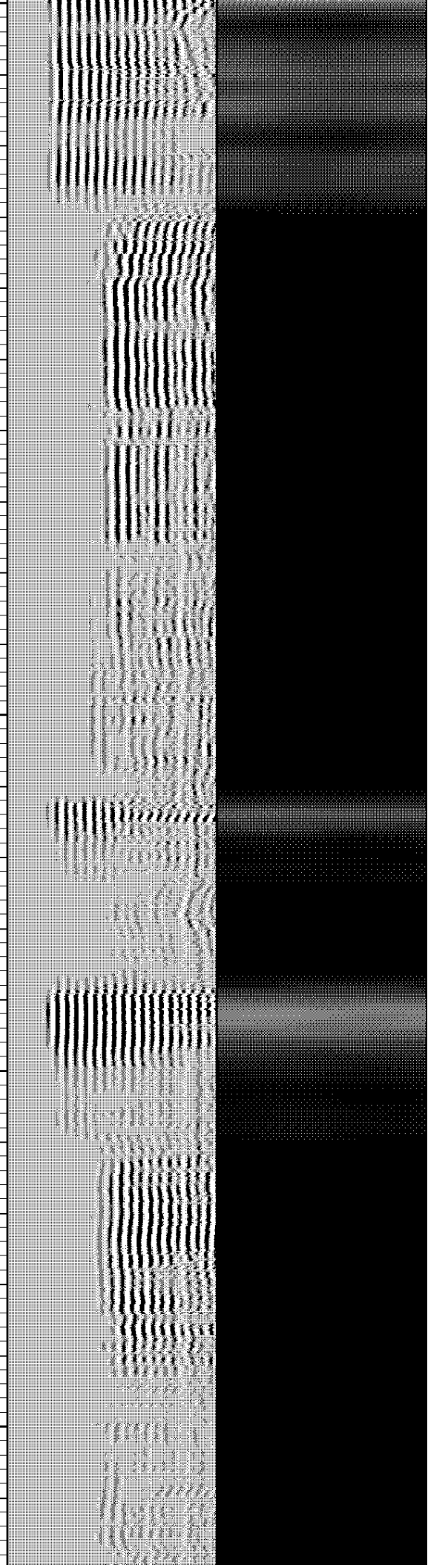
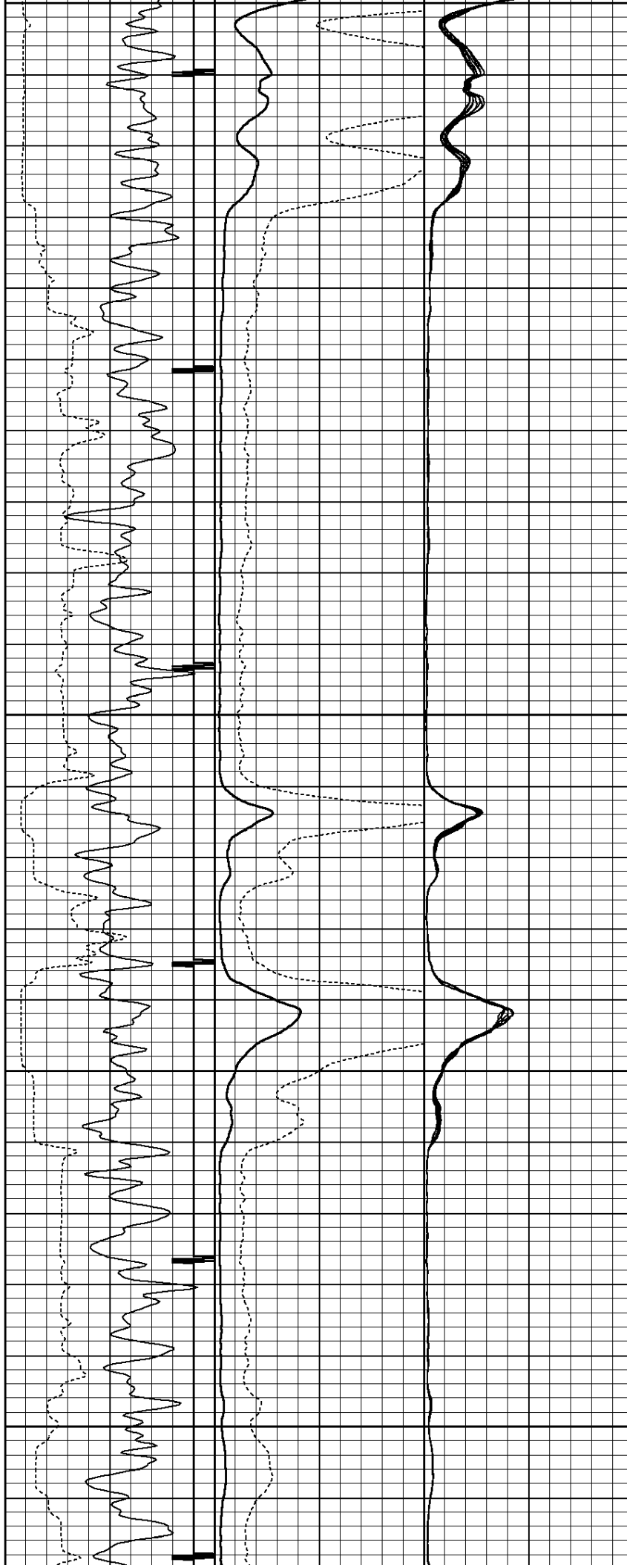
4200

4250

4300



4350
4400
4450
4500
4550

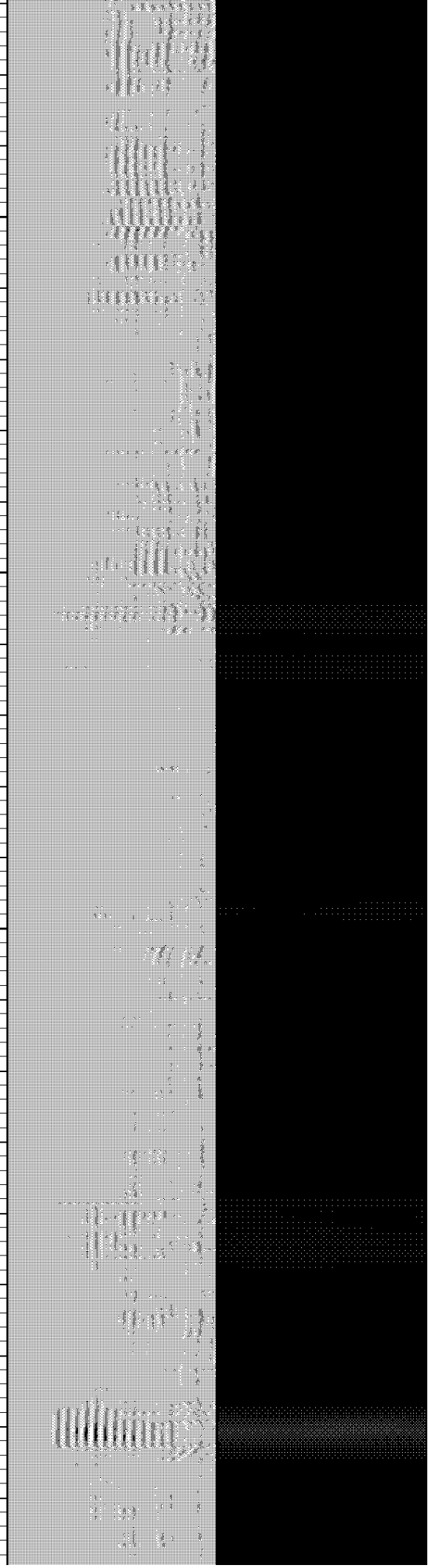
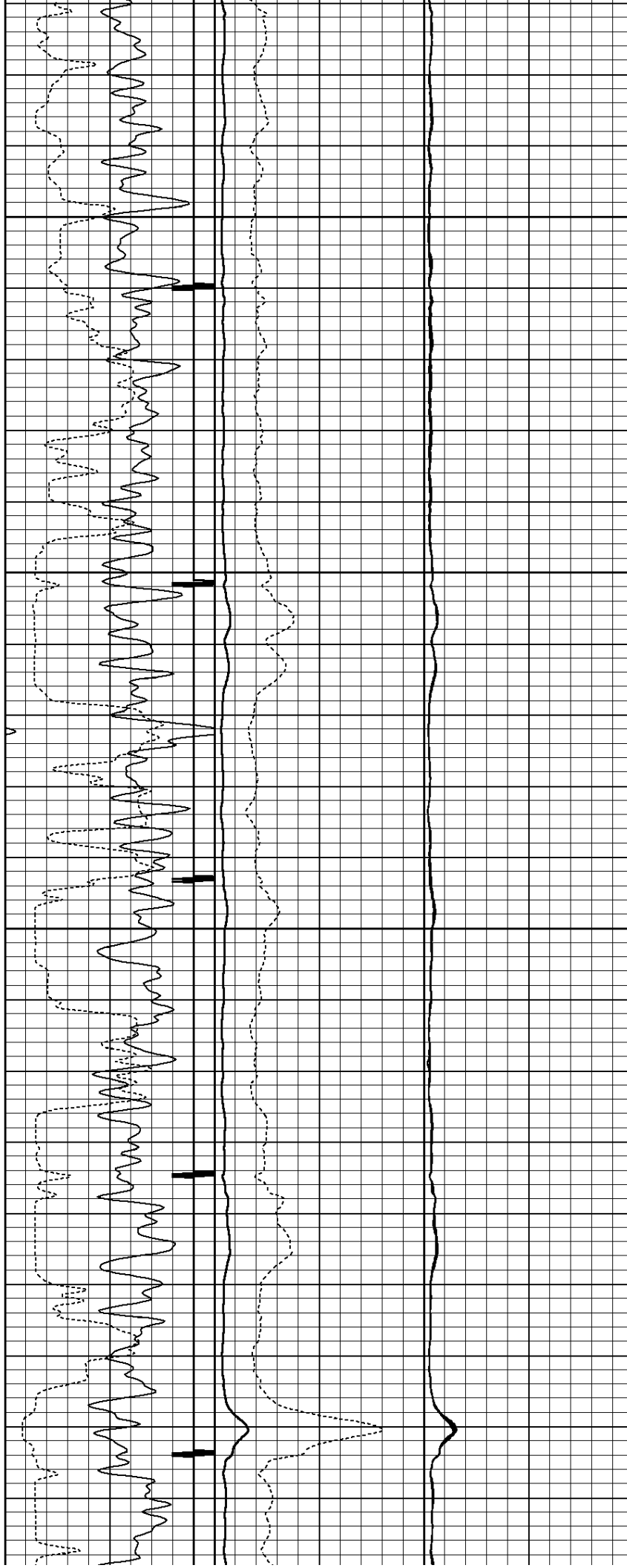


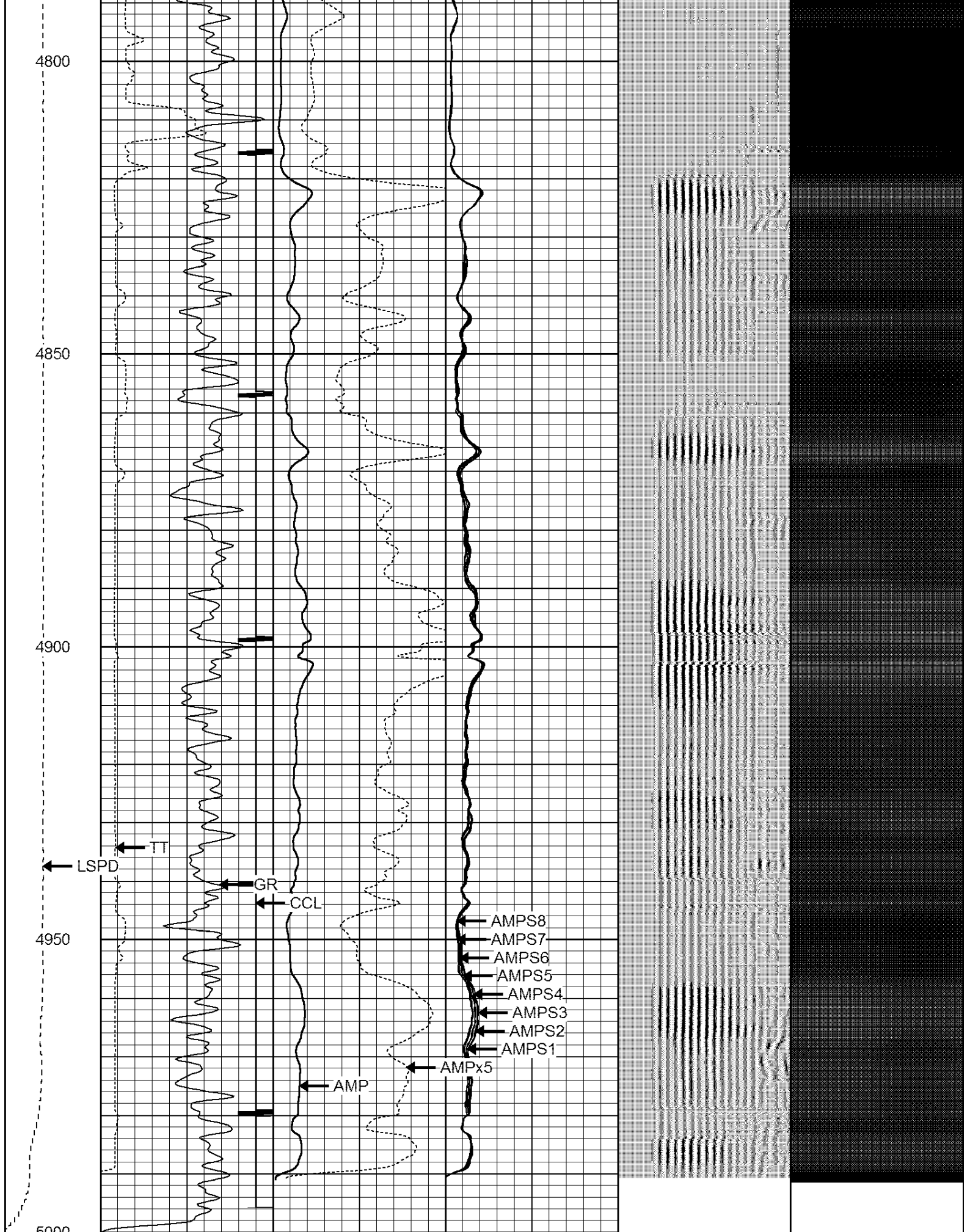
4600

4650

4700

4750





4800

4850

4900

4950

5000

LSPD

TT

GR

CCL

AMPS8

AMPS7

AMPS6

AMPS5

AMPS4

AMPS3

AMPS2

AMPS1

AMPx5

AMP

LSPD
(ft/min)

200 TT (uSec)

1000 0
-9 CCL 1 0

AMP (mV) 100 0
AMPx5 (mV) 20 0

AMPS1 100
AMPS2 100

200 VDL 1200

1 100

Cement Map

8
1

0	250	0	GR (GAPI)	150	0	AMPS3	100
		150	GR (GAPI)	400	0	AMPS4	100
					0	AMPS5	100
					0	AMPS6	100
					0	AMPS7	100
					0	AMPS8	100

Company	CIVITAS
Well	ARISTOCRAT ANGUS 14-04C
Field	WATTENBERG
County	WELD
State	CO