



Emergency Response Plan

**Chaco Energy Company
Archer Field Oil and Gas Development Plan**

Cheyenne County, Colorado

PREPARED BY:

Chaco Energy Company
455 N. Sherman St.
Denver, CO 80205

November 2023

1.0 Introduction

Chaco Energy Company (Chaco) prepared this Emergency Response Plan (Plan) for the proposed re-entry and completion of two plugged and abandoned wells in Cheyenne County, Colorado. The primary target is helium gas. The wells will also produce natural gas. Each location will have a separate tank pad during production. The wells and tanks will be in the following locations:

Table 1. Re-entry Wells

Location	Qtr Qtr T12S R44W	Lat/Lon
Champlin 360 Amoco A #4	NWSE Sec. 29	38.977390, -102.359945
Pelton 41-31 #1	NENE Sec. 31	38.969823, -102.373764
Champlin Tank Pad	NWSW Sec. 29	38.977813, -102.369827
Pelton Tank Pad	NENE Sec. 31	38.970818, -102.372405

Each well will be a conventional vertical well. Each well will be approximately 5,400 feet deep. Chaco will re-enter each well using a workover rig and freshwater. Chaco will remove the well plug, run new production casing, and perforate the well. There will be no hydraulic fracturing, stimulation, or flowback. Each well pad will be approximately 2.07 acres during development and will be downsized to 0.23 acre during production.

The Champlin and Pelton Tank Pads will be approximately 0.66 to 1.06 acre during development and will be downsized to 0.52 to 0.87 acre during production. Tank Pad equipment is listed in Section 10. The locations are shown in Attachment 1.

This Plan addresses the requirement of the Energy & Carbon Management Commission (ECMC) at Rule 304.c.(8) to prepare an Emergency Response Plan and coordinate approval with the local emergency response agency. ECMC guidance (February 16, 2021) requires the Plan to contain the information in Table 2.

Table 2. Required Content for the Emergency Response Plan

1	Local response agency and contact information
2	Date the plan was finalized and approved by the local response agency
3	Directions to the location from the nearest public road intersection
4	Ingress and egress information
5	Legal description (quarter section, township, range, latitude, longitude)
6	Operator and staff emergency contact information
7	Listing of mutual aid agencies
8	Staffing of local and mutual aid agencies
9	Description of site setting including the surrounding area
10	Detailed layout of the Oil & Gas Location
11	Detailed description of the equipment and stored material
12	Sensitive areas
13	Potential impacts, prevention, and mitigation
14	Response equipment, instruments, materials
15	Health and safety action levels, decontamination, staging areas
16	Training coordinated with local responders

1. Local Response Agency and Contact Information

Table 3. Local Response Agency and Contact Information

Agency	Contact	Contact Information
Cheyenne Wells Fire Department 151 S 1 st St W, Cheyenne Wells, CO 80810	Travis Watson, Fire Chief	(719) 667-5633 (Dispatch) (719) 767-5869 cwfire@rebeltec.net
Cheyenne County Sheriff 91 E 1 st St, Cheyenne Wells, CO 80810	Michael Buchanan, Sheriff	(719) 767-5634 mbuchanan@co.cheyenne.co.us

2. Date the Plan was Finalized and Approved by the Local Response Agency

This Emergency Response Plan was provided to the local response agency for review. Attachment 3 demonstrates the coordination activity and local response.

3. Directions to the Location from the Nearest Public Road Intersection

Pelton Locations

From Cheyenne Wells, CO:

North on U.S. 385 for 10.5 miles to CR BB

West on CR BB for 1 mile to CR 43

South on CR 43 for 200 feet

West on 2nd unpaved access road after the Tumbleweed Midstream Compressor Station

Access to Pelton Tank Pad is 260 feet on the right. Continue straight for 370 feet to access Pelton 41-31 #1 on the left

Champlin Locations

From Cheyenne Wells, CO:

North on U.S. 385 for 10.5 miles to CR BB

West on CR BB for 1 mile to CR 43

North on CR 43 for 0.4 mile

East on the 1st unpaved access road at the decommissioned Archer Helium Plant. Access to Champlin Tank Pad is 400 feet on the left. Continue approximately 0.5 mile east to Champlin 360 Amoco A #4.

4. Ingress and Egress Information

Ingress

West from the intersection with CR 43 on an unsecured dirt road for access to Pelton Tank Pad (260 feet) and Pelton 41-31 #1 (additional 370 feet).

East from the intersection with CR 43 on an unsecured dirt road for access to Champlin Tank Pad (400 feet) and Champlin 360 Amoco A #4 (additional 0.5 mile).

Muster points are shown on the Location Drawings in Attachment 1.

Egress

The access roads and locations will accommodate emergency vehicles. There is sufficient turn-around for emergency vehicles and equipment.

5. Legal Description

Table 4. Legal Description

	Champlin 360 AMOCO A #4	Pelton 41-31 #1	Champlin Tank Pad	Pelton Tank Pad
Qtr Qtr	NWSE	NENE	NWSW	NENE
Section	29	31	29	31
Township	12 South	12 South	12 South	12 South
Range	44 West	44 West	44 West	44 West
County	Cheyenne	Cheyenne	Cheyenne	Cheyenne
Lat	38.977390	38.969823	38.977813	38.970818
Lon	-102.359945	-102.373764	-102.369827	-102.372405

6. Operator and Staff Emergency Contact Information

Table 5. Operator Contact Information

Operator	Contact
Senior Operations Engineer	Matt Nelson (303) 981-3840 matt@chacoenergy.com
Lease Operator	Jack Ryser (719) 340-1010 Jroil88@hotmail.com

7. Mutual Aid Agencies

Cheyenne County Sheriff's Office
Michael Buchanan, Sheriff
mbuchanan@co.cheyenne.co.us
Office (719) 767-5634

Cheyenne County Ambulance Service
Scott Nyman, Ambulance Coordinator
cheyennecounty.oem.ems@gmail.com
Office (719) 767-5271

8. Staffing of Local and Mutual Aid Agencies

The Cheyenne Wells Fire Department is staffed with approximately 30 emergency responders. It provides fire protection to the eastern half of Cheyenne County, Colorado.

The Cheyenne County Ambulance Service is staffed with approximately 20 emergency responders. It has two stations, one in the town of Cheyenne Wells and one in Kit Carson, Colorado.

The Cheyenne County Sheriff's Office provides law enforcement, public safety services, and mutual aid in Cheyenne County.

9. Description of Site Setting and Surrounding Area

The locations will be leased from private landowners.

Champlin 360 Amoco A #4 will be on cropland. The Champlin Tank Pad will co-locate with an existing disturbed area adjacent to the decommissioned Archer Helium Plant. Chaco operates the nearby Champlin 360 Amoco A #1 producing well shown in Attachment 1.

The Pelton 31-41 #1 will be on rangeland. The Pelton Tank Pad will be adjacent to a Tumbleweed Midstream Compressor Station.

Gas from the wellhead will be piped underground to the Tank Pad. At the Tank Pad, gas will be separated in a 3-phase separator. At the outlet of the separator, gas will be piped underground to the existing Tumbleweed Midstream Ladder Creek Gathering System. Condensate will be stored in a single condensate tank and trucked off-site for commercial sale. Produced water will be stored in a single produced water tank and trucked off-site for disposal.

Surrounding cropland is winter wheat. Surrounding rangeland is primarily buffalo grass, blue grama, cheatgrass, quackgrass, and smooth brome.

The nearest residence is 4,070 feet north. There are dry and abandoned, plugged and abandoned, and shut in oil and gas wells in the area. Wind turbines surrounding the locations are part of the Xcel Energy Cheyenne Ridge Wind Project.

Detail Layout of the Locations

Detailed layouts of the locations are shown in Attachment 2.

10. Detailed Description of the Equipment and Stored Materials

Well re-entry on each well pad will require the equipment and material listed below. Equipment and material will be removed during production. The equipment is shown on the representative Drill Rig Layout in Attachment 2.

- Workover rig
- Mud pump
- Steel mud tank
- Water tank
- Pipe basket
- Power swivel trailer

During production, well pads will contain a fenced wellhead. Revegetated areas not needed during production will return to prior land use.

During production, tank pads will have the equipment listed below and shown on the representative Facility Layout in Attachment 2. Tanks will be located inside of steel secondary containment.

- 3-phase separator
- 300 to 400-bbl condensate tank
- 300 to 400-bbl produced water tank
- Enclosed combustor
- Sales meter
- Buried gas sales line

11. Sensitive Areas

The nearest residence is 4,070 feet north.

The locations fall within wildlife habitat mapped by Colorado Parks & Wildlife as High Priority Habitat (HPH) for lesser prairie chicken (Estimated Occupied Range). There are no immediately downgradient waterbodies. A swale is located approximately 590 feet southwest but cross gradient from Pelton 41-31 #1.

12. Potential Impacts, Prevention, and Mitigation

Potential impacts include:

- Storm damage
- Lightning
- Fire or wildfire
- Materials spill or release
- Equipment failure
- Motor vehicle or on-site accident

Personnel will be on-site daily during well re-entry and production.

The site operator will monitor for storm-related damages, equipment failure and maintenance needs, and accidental spills or releases.

Tanks on the location will be inside of lined steel secondary containment sized to contain 150 percent of the volume of the largest tank. This prevents the release of a spill to the environment.

The material used on the well pad will be properly containerized and stored to prevent exposure to elements and spills.

Site equipment will be maintained in good working condition and operated according to training and manufacturer specifications.

Locations will be kept weed-free to avoid ignition of vegetation with a vehicle catalytic converter.

Staff and vendors will be expected to limit speeds to avoid accidents.

13. Response Equipment, Instruments, Materials

Spill response material will be available to respond to small leaks or spills. This includes drip pans, a shovel, and absorbents. Small leaks or spills could be produced water, oil, lubricants, or incidental fuel leaks.

In the event of a larger incident, the operator will manage and oversee direct support from a third-party provider to respond to an unintentional release and any potential soil contamination.

14. Health and Safety Action Levels, Decontamination, Staging Areas

The drill foreman and support personnel will be on-site during well re-entry. Their presence will provide continuous communication about site conditions and site safety. During production, an operator will maintain and monitor the locations daily. The operator will observe wellheads, tanks, secondary containment, the separator, and the enclosed combustor. The operator will monitor for pressure changes in pipelines that could indicate an issue with equipment or valves.

Gauges in the separator, tanks, and flowlines will measure volumes and pressure changes (increases and drops). An electronic alert system will remotely alarm the operator for an out-of-specification reading. In response to an alarm, the operator will manually inspect the location to conduct corrective action. Manual ball valves will be used to shut in the well and to isolate equipment for service, when necessary. Valves will be located at each line in and out of the separator, every tank vessel, and before and after the meter on the gas sales line.

An operation and maintenance log will document health, safety, maintenance, and repair issues. The log will be used to record repairs, preventative maintenance scheduling, and incidents. This information will help to identify site conditions requiring attention.

For each location in the event of an incident, the well or tank pad can be used as a staging area. If an incident warrants leaving the well or tank pad, muster points will be the intersection of the access road and CR 43.

15. Training Coordinated with Local Responders

In the event of an emergency requiring first responders, a unified command will be established between the operator's appointed representative on location and first responders. A command post will be established based on conditions present at the time of an incident. Site personnel will be trained on the types of incidents that may

occur on-site and the appropriate response. Incidents include those listed below. Through this Plan, potential incidents are being coordinated with the local response agency for agency input.

- Injury from equipment operation
- Equipment failure causing injury
- Equipment failure causing fire
- Equipment failure causing pressure release
- Grassfire or wildfire
- Medical emergency
- Slips, trips, falls
- Insect stings and bites
- Weather-related incident
- Motor vehicle accident

Most accidents consist of minor injuries, such as cuts, scrapes, trips, and sprains. Most medical incidents typically involve cold or heat exposure, sunburn, and insect stings and bites. Vehicles operating at the site will carry general first aid supplies. On-site self-treatment is typically sufficient for an incident until personnel are able to leave the site and, if warranted, receive any additional follow-up treatment. Notification to the senior operations engineer will occur within 24 hours for all health and safety incidents. Serious incidents may require a 911 response.

Personnel will be instructed that the nearest major medical facility is the Keefe Memorial Hospital in Cheyenne Wells, CO. It is approximately 11.5 miles from the locations.

NEAREST MEDICAL FACILITY

Keefe Memorial Hospital

602 N 6th St West
Cheyenne Wells, CO 80810
(719) 767-5661
24-hour Emergency Room

Directions from:

Pelton Locations

North on CR 43 for 200 feet
Right on CR BB for 1 mile
Right on U.S 385 for 10.5 miles
Right on N 8th St W for 0.2 mile
Left on W 5th St N
Hospital on R

Champlin Locations

South on CR 43 for 0.4 mile
Left on CR BB for 1 mile
Right on U.S 385 for 10.5 miles
Right on N 8th St W for 0.2 mile
Left on W 5th St N
Hospital on R

Attachments

Attachment 1 Location Drawings
Attachment 2 Layout Drawings
Attachment 3 Local Response Agency Coordination

Attachment 1
Location Drawings



Improvements within 2,000' of Working Pad Surface	
Public Road (CR BB)	1,870' S
Public Road (U.S. 385)	1,830' E
Above-ground Utility Line	1,910' E
Dry & Abandoned O&G Well (Champlin 360 Amoco A #3)	1,240' S
Dry & Abandoned O&G Well (Sidebottom 32-29)	1,400' N
Plugged & Abandoned O&G Well (Upr Sidebottom 3-29)	1,730 SW
Plugged & Abandoned O&G Well (Champlin 360 Amoco A #4)	0'
Shut-In O&G Well (Champlin 360 Amoco A #2)	1,220' W
Water Well (125-WCB)	1,500' NE

Aota Technical, LLC

Chaco Energy Company
Champlin 360 Amoco A #4
Location Drawing

Cheyenne County
NW¼ SE¼ Sec. 29 T12S R44W

Date
11/8/23

Figure No.
Figure 1

⊕ Plugged & Abandoned

● Producing Well

⊙ Dry & Abandoned

⊘ Abandoned Location

⊖ Shut-In Well

⊕ Water Well

● Re-Entry Well

— Fence

— Above-ground Utility Line

▭ Working Pad Surface

▭ Oil & Gas Location

▭ 2,000' from Working Pad Surface

▬ Proposed Access Road

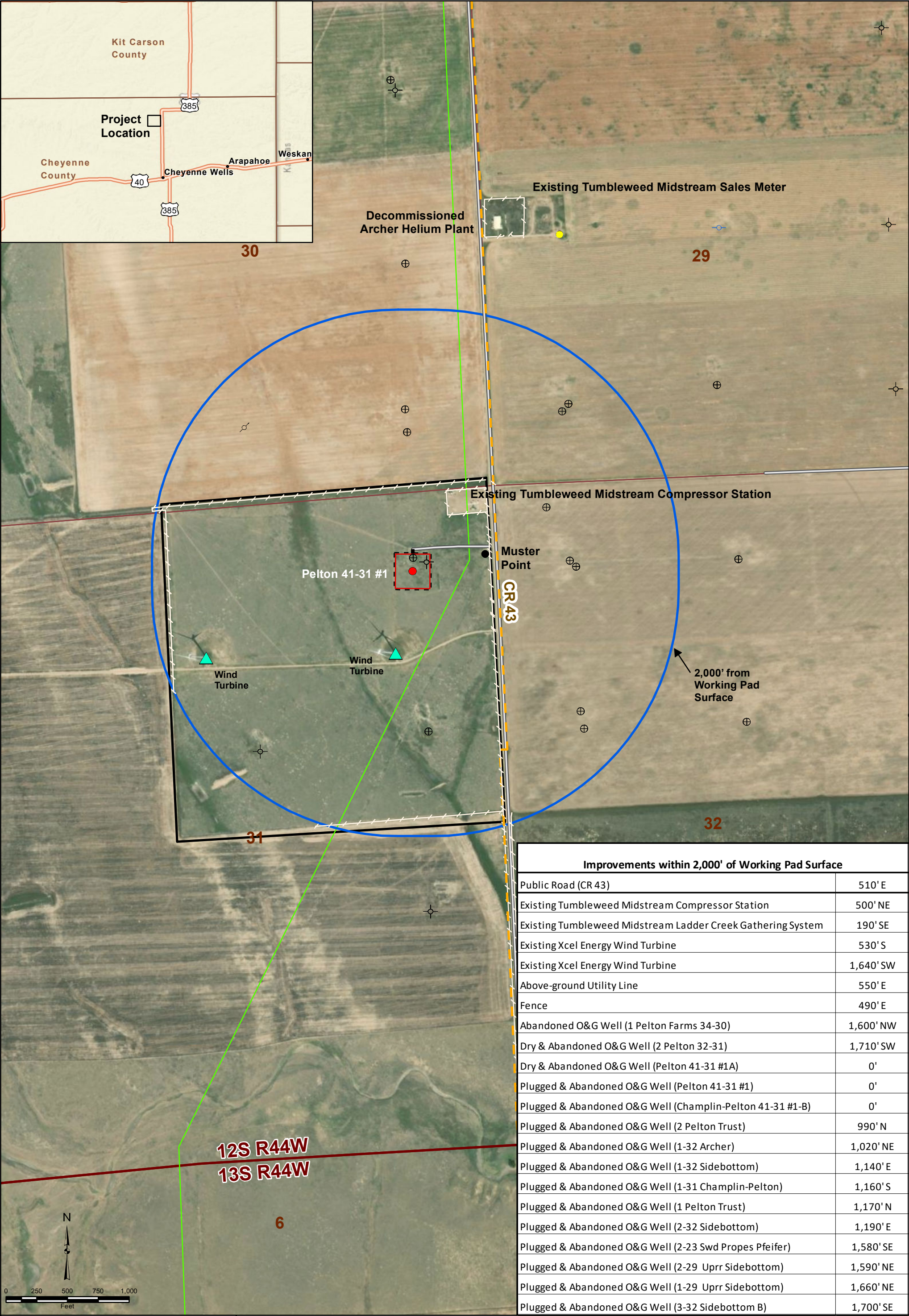
▬ Existing Road

▭ Property Line

▬ Tumbleweed Midstream Ladder Creek Gathering System

▴ Xcel Energy Cheyenne Ridge Wind Project

Data Source:
ECMC GIS Online
Tumbleweed Midstream, LLC
US Wind Turbine Database



Improvements within 2,000' of Working Pad Surface	
Public Road (CR 43)	510' E
Existing Tumbleweed Midstream Compressor Station	500' NE
Existing Tumbleweed Midstream Ladder Creek Gathering System	190' SE
Existing Xcel Energy Wind Turbine	530' S
Existing Xcel Energy Wind Turbine	1,640' SW
Above-ground Utility Line	550' E
Fence	490' E
Abandoned O&G Well (1 Pelton Farms 34-30)	1,600' NW
Dry & Abandoned O&G Well (2 Pelton 32-31)	1,710' SW
Dry & Abandoned O&G Well (Pelton 41-31 #1A)	0'
Plugged & Abandoned O&G Well (Pelton 41-31 #1)	0'
Plugged & Abandoned O&G Well (Champlin-Pelton 41-31 #1-B)	0'
Plugged & Abandoned O&G Well (2 Pelton Trust)	990' N
Plugged & Abandoned O&G Well (1-32 Archer)	1,020' NE
Plugged & Abandoned O&G Well (1-32 Sidebottom)	1,140' E
Plugged & Abandoned O&G Well (1-31 Champlin-Pelton)	1,160' S
Plugged & Abandoned O&G Well (1 Pelton Trust)	1,170' N
Plugged & Abandoned O&G Well (2-32 Sidebottom)	1,190' E
Plugged & Abandoned O&G Well (2-23 Swd Propes Pfeifer)	1,580' SE
Plugged & Abandoned O&G Well (2-29 Uprr Sidebottom)	1,590' NE
Plugged & Abandoned O&G Well (1-29 Uprr Sidebottom)	1,660' NE
Plugged & Abandoned O&G Well (3-32 Sidebottom B)	1,700' SE

Aota Technical, LLC

Chaco Energy Company

Pelton 41-31 #1

Location Drawing

Cheyenne County

NE¼ NE¼ Sec. 31 T12S R44W

Date

11/8/23

Figure No.

Figure 1

⊕

Plugged & Abandoned

●

Re-Entry Well

●

Producing Well

⊖

Dry & Abandoned

⊖

Abandoned Location

⊖

Shut-In Well

⬜

Working Pad Surface

⬜

Oil & Gas Location

⬜

2,000' from Working Pad Surface

⬜

Property Line

—

Proposed Access Road

—

Existing Road

—

Fence

—

Above-ground Utility Line

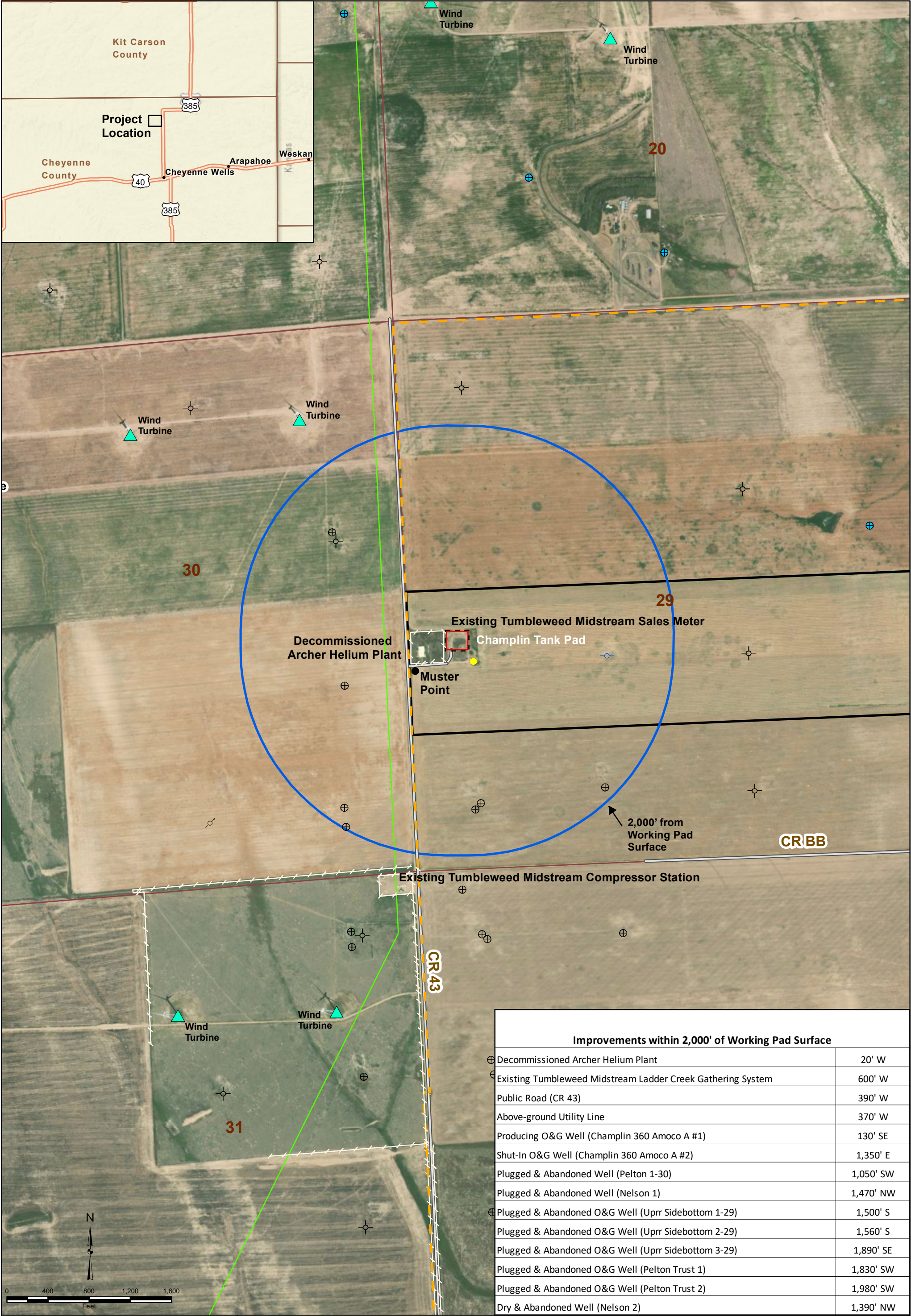
—

Tumbleweed Midstream Ladder Creek Gathering System

▲

Xcel Energy Cheyenne Ridge Wind Project

Data Source:
ECMC GIS Online
Tumbleweed Midstream, LLC
US Wind Turbine Database



Improvements within 2,000' of Working Pad Surface	
Decommissioned Archer Helium Plant	20' W
Existing Tumbleweed Midstream Ladder Creek Gathering System	600' W
Public Road (CR 43)	390' W
Above-ground Utility Line	370' W
Producing O&G Well (Champlin 360 Amoco A #1)	130' SE
Shut-In O&G Well (Champlin 360 Amoco A #2)	1,350' E
Plugged & Abandoned Well (Pelton 1-30)	1,050' SW
Plugged & Abandoned Well (Nelson 1)	1,470' NW
Plugged & Abandoned O&G Well (Uprr Sidebottom 1-29)	1,500' S
Plugged & Abandoned O&G Well (Uprr Sidebottom 2-29)	1,560' S
Plugged & Abandoned O&G Well (Uprr Sidebottom 3-29)	1,890' SE
Plugged & Abandoned O&G Well (Pelton Trust 1)	1,830' SW
Plugged & Abandoned O&G Well (Pelton Trust 2)	1,980' SW
Dry & Abandoned Well (Nelson 2)	1,390' NW

Aota Technical, LLC

Chaco Energy Company

Champlin Tank Pad

Location Drawing

Cheyenne County

NW¼ SW¼ Sec. 29 T12S R44W

Date

11/8/23

Figure No.

Figure 1

Legend

⊕

 Plugged & Abandoned

●

 Producing Well

⊙

 Dry & Abandoned

⊘

 Abandoned Location

⊖

 Shut-In Well

⊕

 Water Well

▭

 Working Pad Surface

▭

 Oil & Gas Location

▭

 2,000' from Working Pad Surface

▭

 Property Line

—

 Existing Road

—

 Fence

—

 Above-ground Utility Line

—

 Tumbleweed Midstream Ladder Creek Gathering System

▲

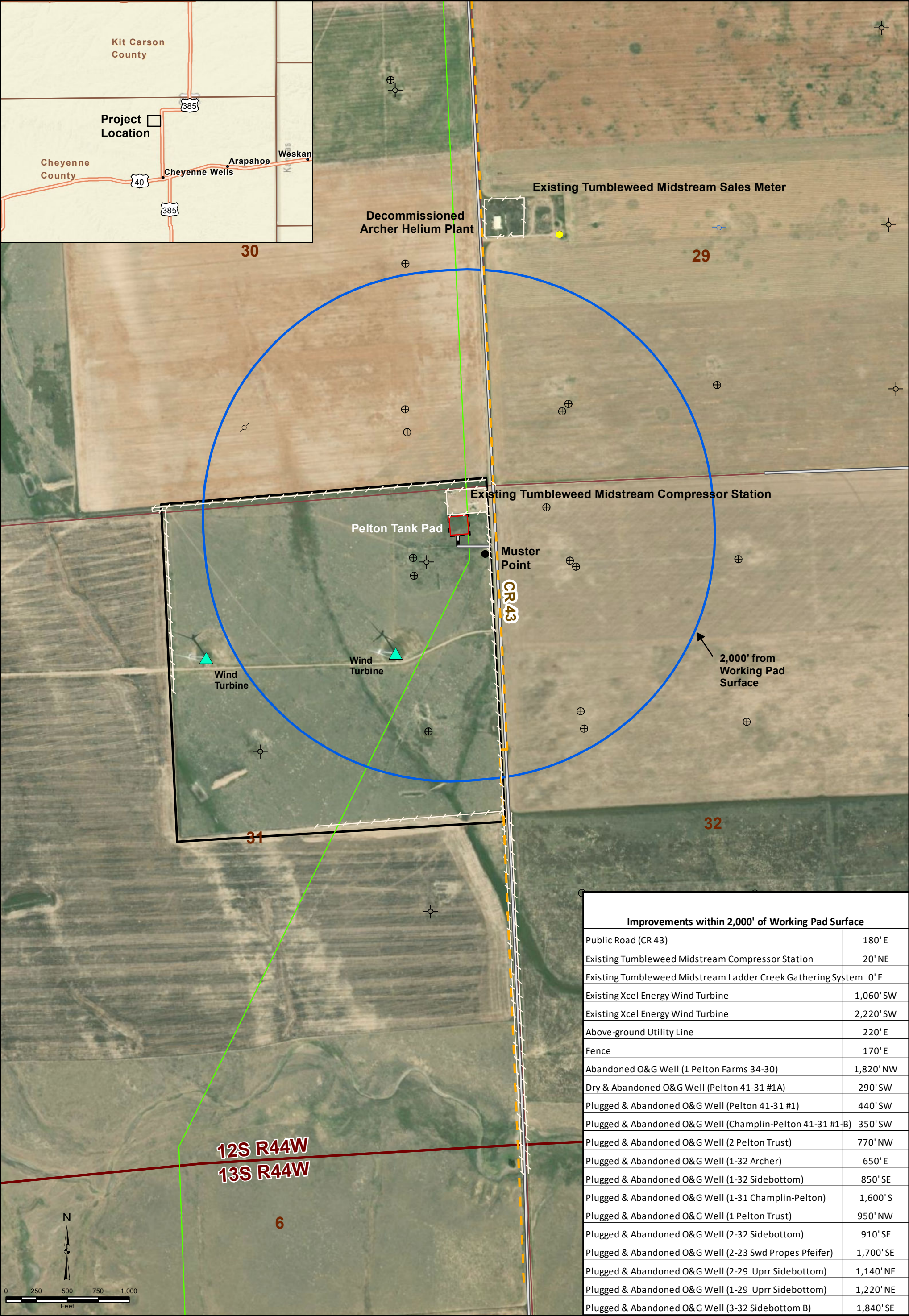
 Xcel Energy Cheyenne Ridge Wind Project

Data Source:

ECMC GIS Online

Tumbleweed Midstream, LLC

US Wind Turbine Database



Improvements within 2,000' of Working Pad Surface	
Public Road (CR 43)	180' E
Existing Tumbleweed Midstream Compressor Station	20' NE
Existing Tumbleweed Midstream Ladder Creek Gathering System	0' E
Existing Xcel Energy Wind Turbine	1,060' SW
Existing Xcel Energy Wind Turbine	2,220' SW
Above-ground Utility Line	220' E
Fence	170' E
Abandoned O&G Well (1 Pelton Farms 34-30)	1,820' NW
Dry & Abandoned O&G Well (Pelton 41-31 #1A)	290' SW
Plugged & Abandoned O&G Well (Pelton 41-31 #1)	440' SW
Plugged & Abandoned O&G Well (Champlin-Pelton 41-31 #1-B)	350' SW
Plugged & Abandoned O&G Well (2 Pelton Trust)	770' NW
Plugged & Abandoned O&G Well (1-32 Archer)	650' E
Plugged & Abandoned O&G Well (1-32 Sidebottom)	850' SE
Plugged & Abandoned O&G Well (1-31 Champlin-Pelton)	1,600' S
Plugged & Abandoned O&G Well (1 Pelton Trust)	950' NW
Plugged & Abandoned O&G Well (2-32 Sidebottom)	910' SE
Plugged & Abandoned O&G Well (2-23 Swd Propes Pfeifer)	1,700' SE
Plugged & Abandoned O&G Well (2-29 Uprr Sidebottom)	1,140' NE
Plugged & Abandoned O&G Well (1-29 Uprr Sidebottom)	1,220' NE
Plugged & Abandoned O&G Well (3-32 Sidebottom B)	1,840' SE

Aota Technical, LLC

Chaco Energy Company
Pelton Tank Pad
Location Drawing
Cheyenne County
NE¼ NE¼ Sec. 31 T12S R44W

Date
11/8/23

Figure No.
Figure 1

Legend

Plugged & Abandoned

Producing Well

Dry & Abandoned

Abandoned Location

Shut-In Well

Working Pad Surface

Oil & Gas Location

2,000' from Working Pad Surface

Property Line

Proposed Access Road

Existing Road

Fence

Above-ground Utility Line

Tumbleweed Midstream Ladder Creek Gathering System

Xcel Energy Cheyenne Ridge Wind Project

Data Source:
ECMC GIS Online
Tumbleweed Midstream, LLC
US Wind Turbine Database

Attachment 2

Layout Drawings



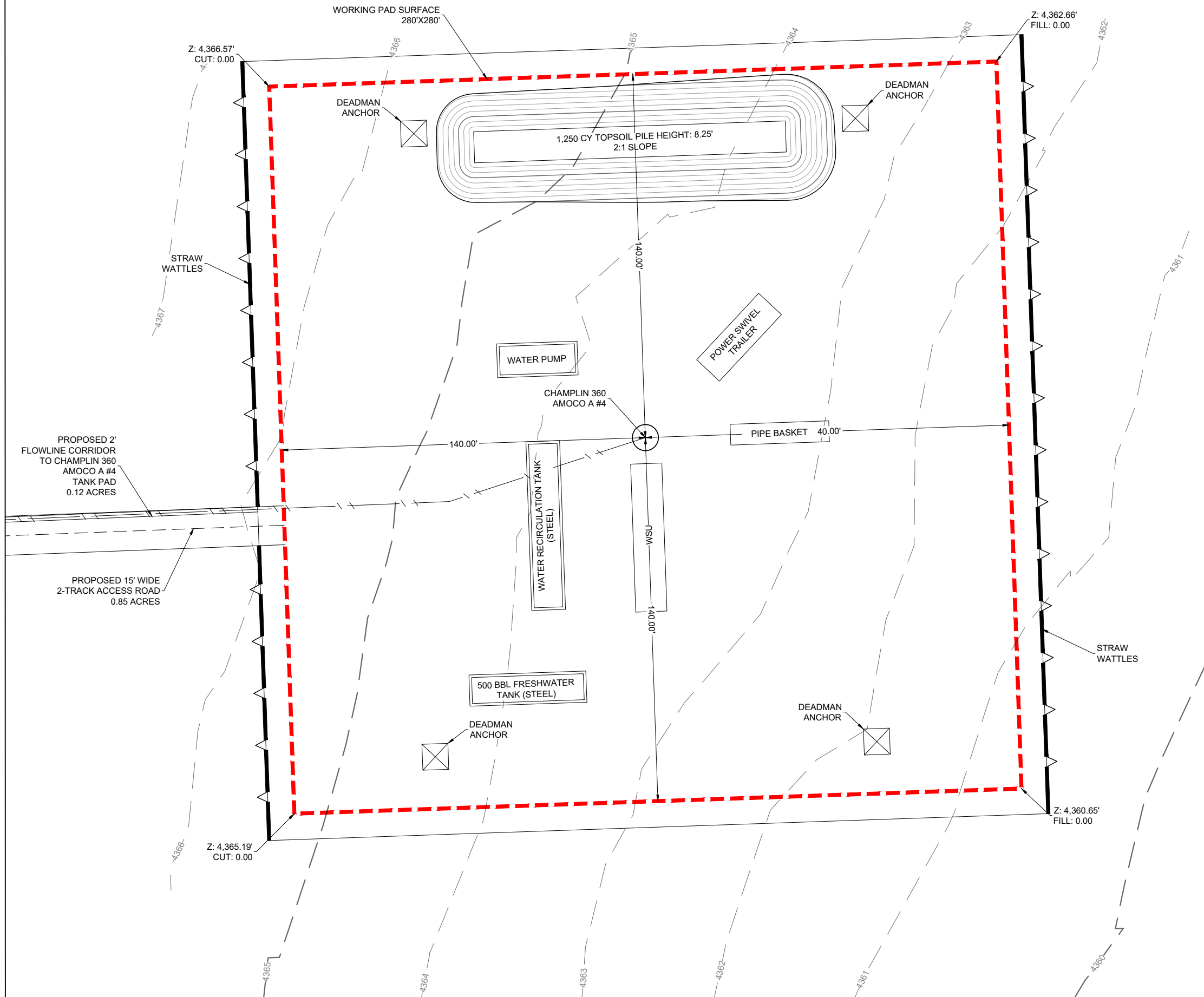
SCALE: 1" = 40'

- EXISTING 1' CONTOUR
- EXISTING 5' CONTOUR
- PROPOSED FLOWLINE
- WORKING PAD SURFACE
- OIL AND GAS LOCATION
- STRAW WATTLES
- WELLHEAD

WELLHEAD ELEVATIONS
GRADED ELEVATION: 4,363.75'
UNGRADED ELEVATION: 4,363.75'

NOTES:

- 1.) THIS IS RE-ENTRY OF A PREVIOUS P&A CONVENTIONAL VERTICAL WELL. THE WELL WILL BE RE-ENTERED USING A WORKOVER RIG AND FRESHWATER.
- 2.) CHACO WILL REMOVE THE WELL PLUG, RUN NEW PRODUCTION CASING, AND PERFORATE.
- 3.) THERE WILL BE NO FRACKING, STIMULATION, OR FLOWBACK.
- 4.) THERE IS NO COMPLETION AND STIMULATION LAYOUT OR FLOWBACK EQUIPMENT LAYOUT FOR THIS DEVELOPMENT.



PRELIMINARY RIG LAYOUT

CHAMPLIN 360 AMOCO A #4

CHEYENNE COUNTY

NW 1/4 SE 1/4 SEC.29 T12S R44W 6TH P.M.

CHACO ENERGY COMPANY

PRELIMINARY, THIS DOCUMENT SHALL NOT BE RECORDED FOR ANY PURPOSE AND SHALL NOT BE USED OR VIEWED OR RELIED UPON AS A FINAL ENGINEERING OR SURVEY DOCUMENT.

DATE:	11/07/2023
DRAWN BY:	TJM
REVIEWED BY:	ARG
SCALE:	1" = 40'
SHEET:	3 OF 4
REVISION:	
XXX	XXXX/XX
XXX	XXXX/XX
XXX	XXXX/XX



SCALE: 1" = 40'

0' 20' 40'

EXISTING 1' CONTOUR

EXISTING 5' CONTOUR

PROPOSED FLOWLINE

WORKING PAD SURFACE

OIL AND GAS LOCATION

STRAW WATTLES

WELLHEAD

INTERIM RECLAMATION AREA

DRAINAGE

DEADMAN ANCHOR

PROPOSED 2' FLOWLINE CORRIDOR TO CHAMPLIN 360 AMOCO A #4 TANK PAD 0.12 ACRES

PROPOSED 15' WIDE 2-TRACK ACCESS ROAD 0.85 ACRES

DISTURBANCE ACREAGES:

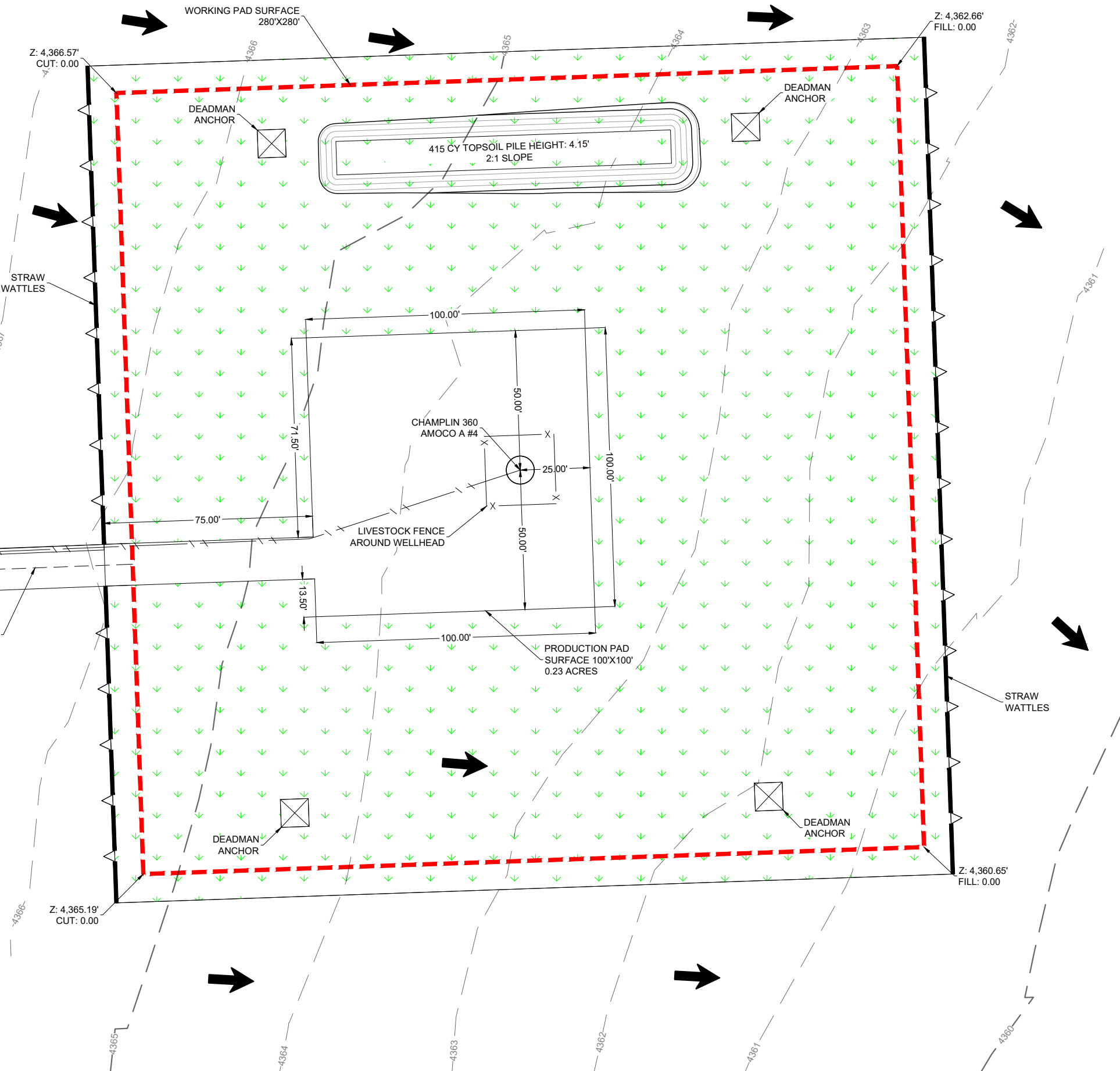
PRODUCTION PAD (AC): 0.23

INTERIM RECLAMATION (AC): 1.84

OIL & GAS LOCATION (AC): 2.07

PROPOSED ACCESS ROAD (AC): 0.85

FLOWLINE CORRIDOR (AC): 0.12



FACILITY LAYOUT

CHAMPLIN 360 AMOCO A #4

CHEYENNE COUNTY

NW 1/4 SE 1/4 SEC.29 T12S R44W 6TH P.M.

CHACO ENERGY COMPANY

PRELIMINARY, THIS DOCUMENT SHALL NOT BE RECORDED FOR ANY PURPOSE AND SHALL NOT BE USED OR VIEWED OR RELIED UPON AS A FINAL ENGINEERING OR SURVEY DOCUMENT.

DATE: 11/07/2023

DRAWN BY: TJM

REVIEWED BY: ARG

SCALE: 1" = 40'

SHEET: 4 OF 4

REVISION:

XXX XXX XXX

XXX XXX XXX

XXX XXX XXX



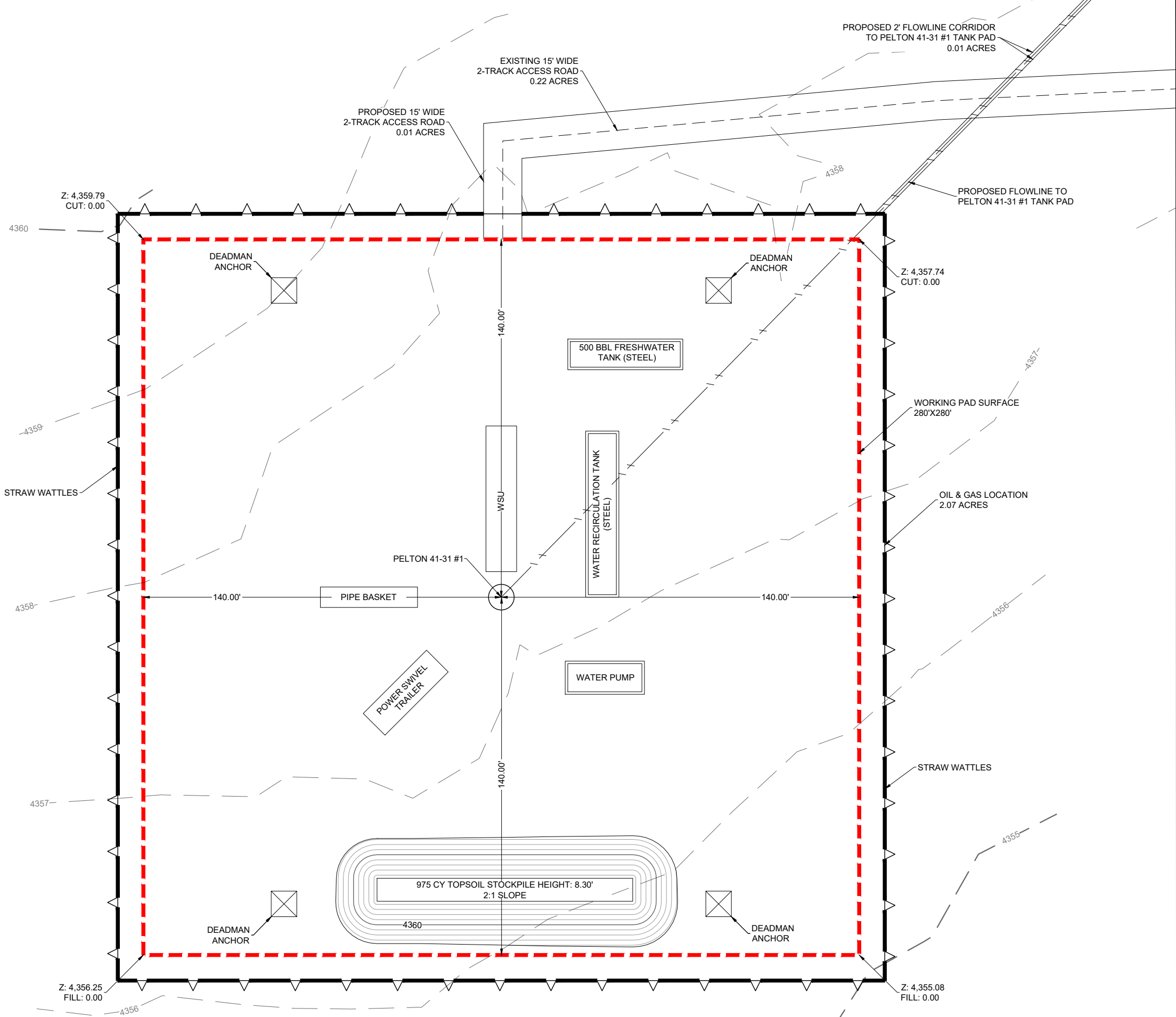
SCALE: 1" = 40'

- EXISTING 1' CONTOUR
- EXISTING 5' CONTOUR
- PROPOSED FLOWLINE
- WORKING PAD SURFACE
- OIL AND GAS LOCATION
- STRAW WATTLES
- WELLHEAD

WELLHEAD ELEVATIONS
GRADED ELEVATION: 4,357.14'
UNGRADED ELEVATION: 4,357.14'

NOTES:

- 1.) THIS IS RE-ENTRY OF A PREVIOUS P&A CONVENTIONAL VERTICAL WELL. THE WELL WILL BE RE-ENTERED USING A WORKOVER RIG AND FRESHWATER.
- 2.) CHACO WILL REMOVE THE WELL PLUG, RUN NEW PRODUCTION CASING, AND PERFORATE.
- 3.) THERE WILL BE NO FRACKING, STIMULATION, OR FLOWBACK.
- 4.) THERE IS NO COMPLETION AND STIMULATION LAYOUT OR FLOWBACK EQUIPMENT LAYOUT FOR THIS DEVELOPMENT.

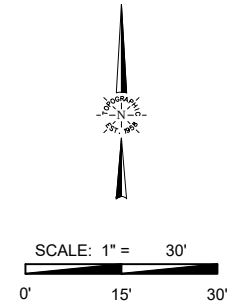


PRELIMINARY RIG LAYOUT

PELTON 41-31 WELL PAD
CHEYENNE COUNTY
NE $\frac{1}{4}$ NE $\frac{1}{4}$ SEC. 31 T12S R44W 6TH P.M.
CHACO ENERGY COMPANY

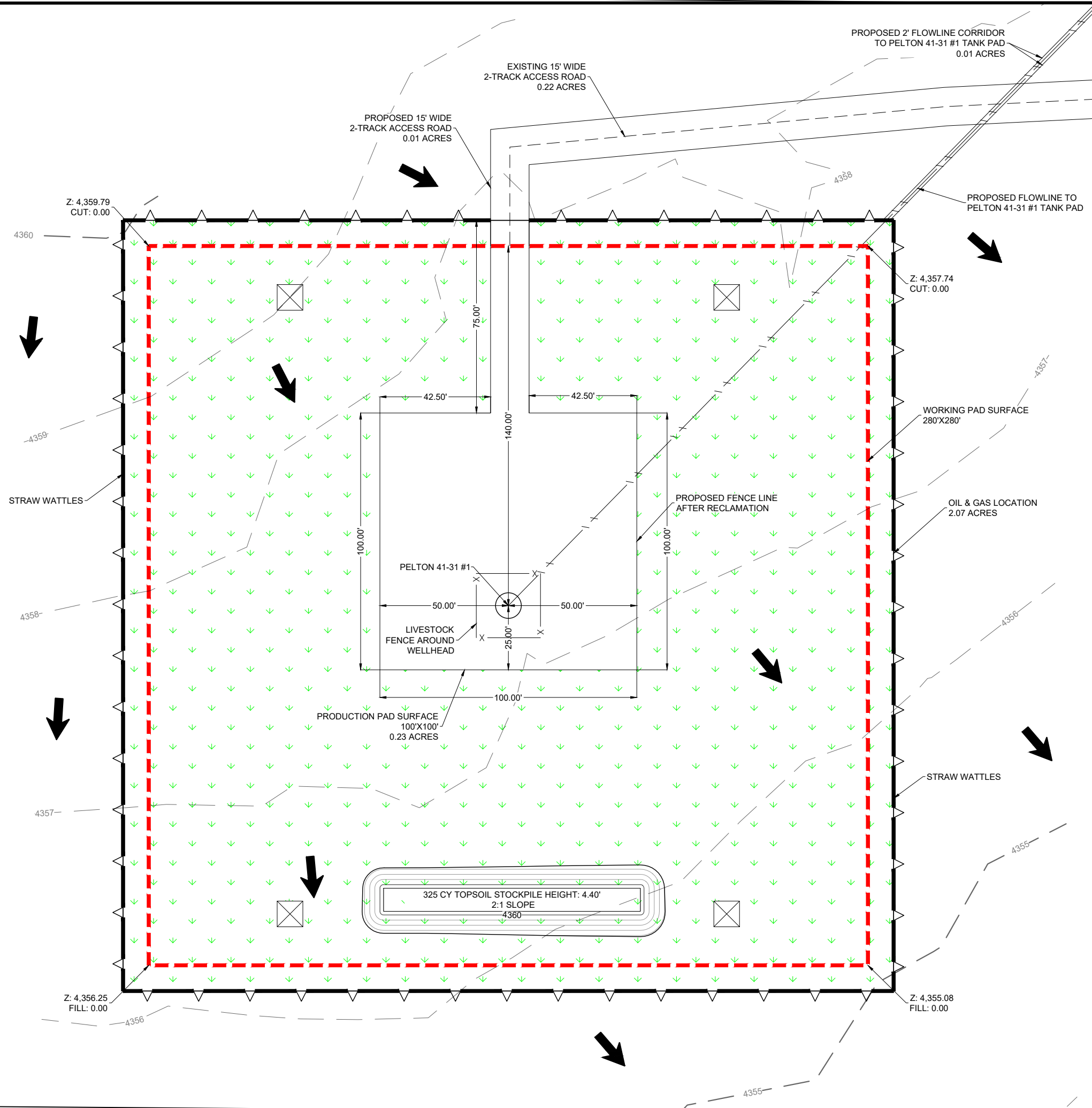
PRELIMINARY, THIS DOCUMENT SHALL NOT BE RECORDED FOR ANY PURPOSE AND SHALL NOT BE USED OR VIEWED OR RELIED UPON AS A FINAL ENGINEERING OR SURVEY DOCUMENT.

DATE:	11/07/2023
DRAWN BY:	TJM
REVIEWED BY:	ARG
SCALE:	1" = 40'
SHEET:	3 OF 4
REVISION:	
XXX	XXXX/XX
XXX	XXXX/XX
XXX	XXXX/XX



- EXISTING 1' CONTOUR
- EXISTING 5' CONTOUR
- PROPOSED FLOWLINE
- WORKING PAD SURFACE
- OIL AND GAS LOCATION
- STRAW WATTLES
- WELLHEAD
- INTERIM RECLAMATION AREA
- DRAINAGE
- DEADMAN ANCHOR

DISTURBANCE ACREAGES:	
OIL & GAS LOCATION (AC):	2.07
PRODUCTION PAD SURFACE (AC):	0.23
INTERIM RECLAMATION (AC):	1.84
PROPOSED ACCESS ROAD (AC):	0.01
FLOWLINE CORRIDOR (AC):	0.01



TOPOGRAPHIC
LOYALTY INNOVATION LEGACY

481 WINSCOTT ROAD, Ste. 200
BENBROOK, TEXAS 76126
TELEPHONE: (817) 744-7512
FAX: (817) 744-7554
WWW.TOPOGRAPHIC.COM

FACILITY LAYOUT

PELTON 41-31 WELL PAD
CHEYENNE COUNTY
NE 1/4 NE 1/4 SEC. 31 T12S R44W 6TH P.M.

CHACO ENERGY COMPANY

PRELIMINARY, THIS DOCUMENT SHALL NOT BE RECORDED FOR ANY PURPOSE AND SHALL NOT BE USED OR VIEWED OR RELIED UPON AS A FINAL ENGINEERING OR SURVEY DOCUMENT.

DATE:	11/07/2023
DRAWN BY:	TJM
REVIEWED BY:	ARG
SCALE:	1" = 40'
SHEET:	4 OF 4
REVISION:	
XXX	XXXX/XX
XXX	XXXX/XX
XXX	XXXX/XX



SCALE: 1" = 30'

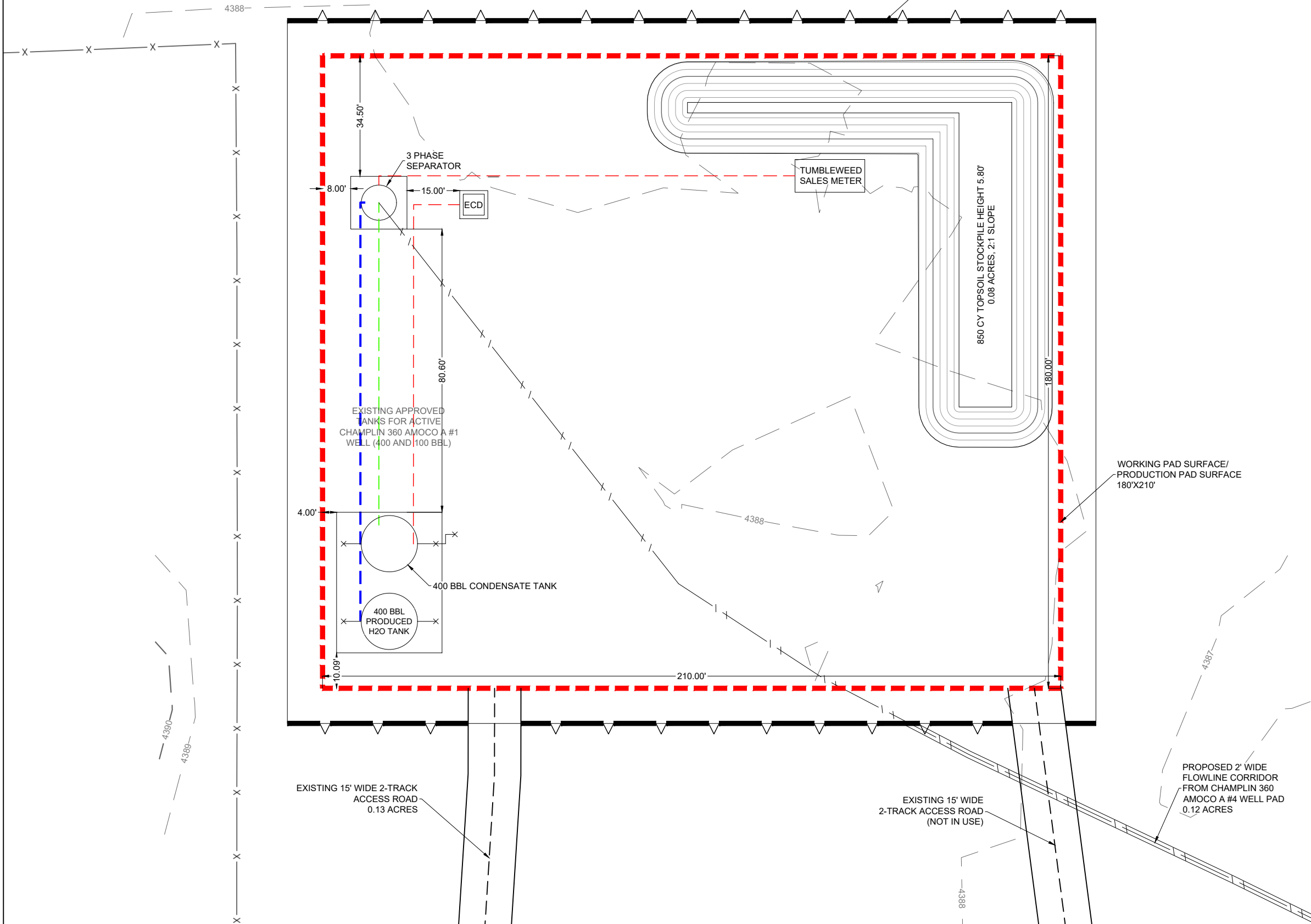
- EXISTING 1' CONTOUR
- EXISTING 5' CONTOUR
- PROPOSED FLOWLINE
- WORKING PAD SURFACE/
PRODUCTION PAD SURFACE
- OIL AND GAS LOCATION
- STRAW WATTLES
- DRAINAGE
- FLUID TO PRODUCED
WATER TANK
- FLUID TO CONDENSATE
TANK
- GAS

DISTURBANCE ACREAGES:

WORKING PAD SURFACE (AC):	0.87
PRODUCTION PAD SURFACE (AC):	0.87
OIL & GAS LOCATION (AC):	1.06
FLOWLINE CORRIDOR (AC):	0.12

NOTES:

- 1.) FLOWLINE CORRIDOR ACREAGE ONLY
INCLUDES ACREAGE OUTSIDE OF OIL AND
GAS AREA.



FACILITY LAYOUT

CHAMPLIN 360 AMOCO A #4 TANK PAD

CHEYENNE COUNTY

NW $\frac{1}{4}$ SW $\frac{1}{4}$ SEC.29 T12S R44W 6TH P.M.

CHACO ENERGY COMPANY

PRELIMINARY, THIS
DOCUMENT SHALL NOT BE
RECORDED FOR ANY
PURPOSE AND SHALL NOT BE
USED OR VIEWED OR RELIED
UPON AS A FINAL
ENGINEERING OR SURVEY
DOCUMENT.

DATE: 11/09/2023

DRAWN BY: TJM

REVIEWED BY: ARG

SCALE: 1" = 30'

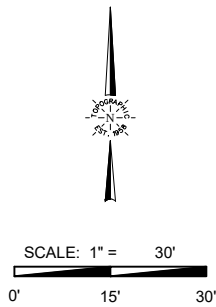
SHEET: 3 OF 3

REVISION:

XXX XXX XXX

XXX XXX XXX

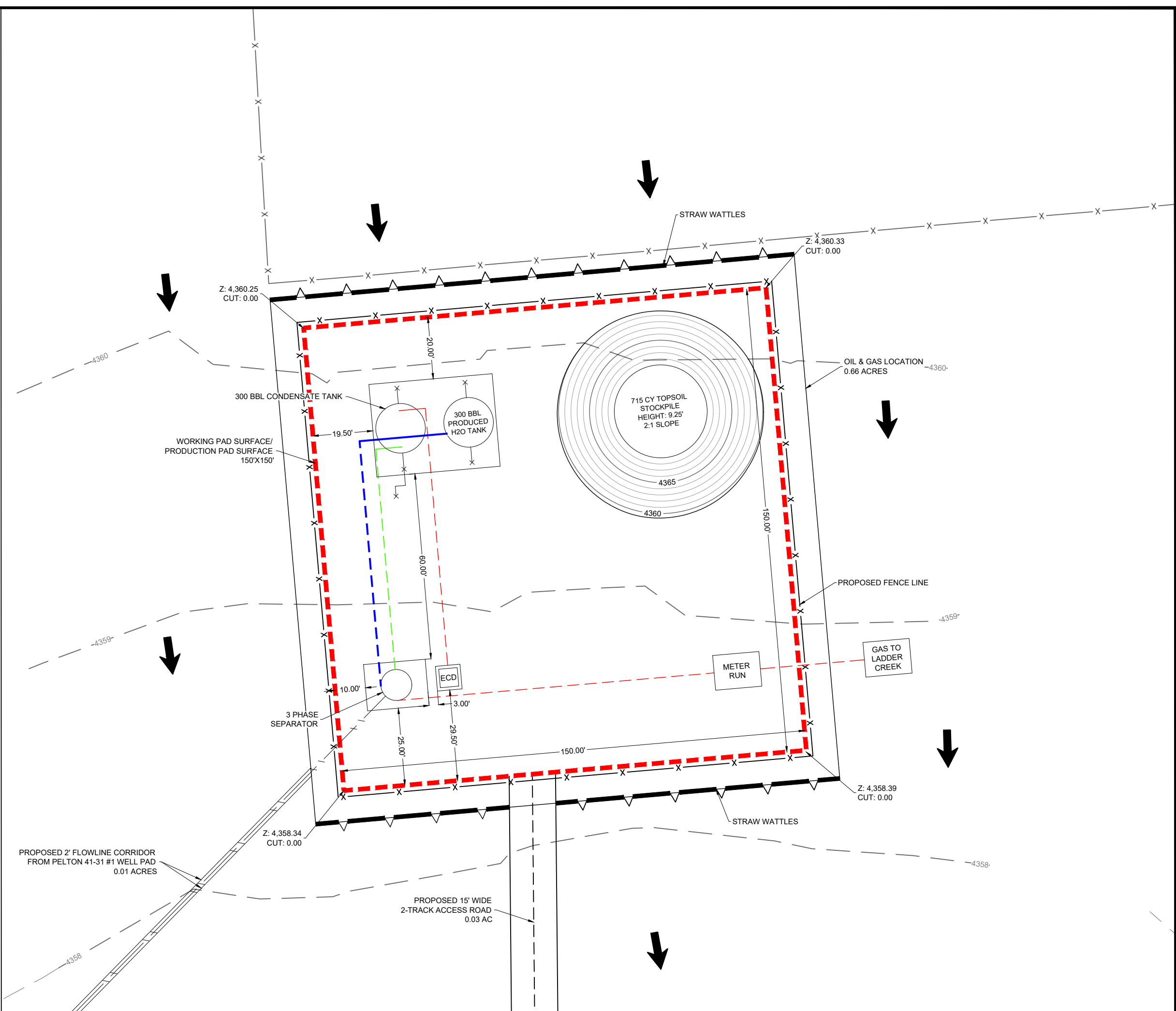
XXX XXX XXX



- EXISTING 1' CONTOUR
- EXISTING 5' CONTOUR
- PROPOSED FLOWLINE
- WORKING PAD SURFACE/
PRODUCTION PAD SURFACE
- OIL AND GAS LOCATION
- STRAW WATTLES
- DRAINAGE
- FLUID TO PRODUCED
WATER TANK
- FLUID TO CONDENSATE
TANK
- GAS

DISTURBANCE ACREAGES:	
WORKING PAD SURFACE (AC):	0.52
PRODUCTION PAD SURFACE (AC):	0.52
OIL & GAS LOCATION (AC):	0.66
PROPOSED ACCESS ROAD (AC):	0.03
FLOWLINE CORRIDOR (AC):	0.01

- NOTES:
- 1.) FLOWLINE CORRIDOR ACREAGE ONLY
INCLUDES ACREAGE OUTSIDE OF OIL AND
GAS AREA.



481 WINSCOTT ROAD, Ste. 200
BENBROOK, TEXAS 76126
TELEPHONE: (817) 744-7512
FAX (817) 744-7554
WWW.TOPOGRAPHIC.COM

FACILITY LAYOUT

PELTON 41-31 TANK PAD CHEYENNE COUNTY
NE 1/4 NE 1/4 SEC. 31 T12S R44W 6TH P.M.
CHACO ENERGY COMPANY

PRELIMINARY, THIS
DOCUMENT SHALL NOT BE
RECORDED FOR ANY
PURPOSE AND SHALL NOT BE
USED OR VIEWED OR RELIED
UPON AS A FINAL
ENGINEERING OR SURVEY
DOCUMENT.

DATE:	11/07/2023
DRAWN BY:	TJM
REVIEWED BY:	ARG
SCALE:	1" = 30'
SHEET:	3 OF 3
REVISION:	
XXX	XXXXXX
XXX	XXXXXX
XXX	XXXXXX

Attachment 3

Local Response Agency Coordination

gwen.brodsky@aota.tech

From: gwen.brodsky@aota.tech
Sent: Wednesday, August 16, 2023 9:50 AM
To: cwfire@rebeltec.net
Cc: Matt Nelson
Subject: Chaco Energy Company - Emergency Response Plan
Attachments: Emergency Response Plan_Archer Field.pdf

Chief Watson,

On behalf of Chaco Energy Company, this email provides an Emergency Response Plan for re-entry and new production from two previously plugged oil and gas wells north of Cheyenne Wells. The Emergency Response Plan is a permit requirement under state rules administered by the (newly renamed) Energy and Carbon Management Commission (ECMC). Chaco will be applying for ECMC permits for the locations. The Emergency Response Plan provides details on the locations, access, equipment on site, potential for hazards, and response material and procedures.

Your response to this email will help to demonstrate Chaco's coordination with the local emergency response agency.

Please don't hesitate to let me know if we can help with any questions.

Many thanks,

Gwen

Gwen Brodsky | Principal
Cell (303) 818-4462
gwen.brodsky@aota.tech

Aota Technical, LLC | Denver, CO
www.aota.tech