



Terra Energy Partners, LLC

SURFACE POST JOB REPORT

Leverich SR 523-13 05-045-24560
S:13 T:7S R:94W Garfield CO

CallSheet #: 87493
Proposal #: 69813



SURFACE Post Job Report

Attention: Mr. Dustin Childers | (936) 524-8828 | dchilders@terraep.com
Terra Energy Partners, LLC
4828 Loop Central Dr., Suite 900 | Houston, TX 77081

Dear Mr. Dustin Childers,

Thank you for the opportunity to provide cementing services on this well. American Cementing strives to achieve complete customer satisfaction. If you have any questions regarding the services or data provided, please contact American Cementing at any time.

Sincerely,

Krystal Schell

Field Engineer I | (719) 992-1830 | krystal.schell@americacementing.com

Field Office 28730 US-6, Rifle, CO 81650
Phone: (970) 657-1187

Job Details & Summary

Geometry

Type	Function	OD (in)	ID (in)	Weight (lb/ft)	Thread	Top (ft)	Bottom (ft)	Excess (%)
Casing	Outer	20	19.5	53	n/a	0	80	0
Open Hole	Outer	n/a	13.5	n/a	n/a	110	500	16
Open Hole	Outer	n/a	13.5	n/a	n/a	500	1179	16
Casing	Inner	9.625	8.921	36	n/a	0	1176	0

Timing

Event	Date/Time
ERTS	00/24/2023 00:00
Call Out	6/24/2023 18:20
Depart Facility	6/24/2023 20:00
On Location	6/24/2023 20:15
Rig Up Iron	6/24/2023 23:30
Job Started	6/25/2023 03:00
Job Completed	6/25/2023 04:26
Rig Down Iron	6/25/2023 04:45
Depart Location	6/25/2023 06:00

Equipment / People

Unit Type	Unit	Power Unit	Employee #1
Cement Trailer Float	CTF-522	TRC-425	Jackson, Duesdayne
Light Duty Vehicles	LDV-061		Woronovitch, Collin
Cement Pump Float	CPF-053	TRH-959	Bradbrook, Jeremy

General Job Information

Metrics	Value
Well Fluid Density	8.9 lb/gal
Well Fluid Type	WBM
Rig Circulation Vol	295 bbls
Rig Circulation Time	0.5 hours
Calculated Displacement	87.7 bbls
Actual Displacement	87.7 bbls
Total Spacer to Surface	20 bbls
Total CMT to Surface	37 bbls
Well Topped Out	N/A

Job Details

Metrics	Value
Flare Prior to Job	No
Flare Prior to Job	0 units
Flare During Job	No
Flare During Job	0 units
Flare at End of Job	No
Flare at End of Job	0 units
Well Full Prior to Job	Yes
Well Fluid Density Into Well	8.9 lb/gal
Well Fluid Density Out of Well	8.9 lb/gal

Job Details (cont.)

Metrics	Value
BHCT	81 °F
BHST	99 °F
Initial ISIP	psi
Final ISIP	psi
Skis in Formation	sks
Injection #1	bpm
Injection #1	psi
Injection #2	bpm
Injection #2	psi

Water Analysis

Metrics	Value	Recommended
Water Source	Upright Rig Tank	
Temperature	68 °F	50-80 °F
pH Level	7	5.5-8.5
Chlorides	300 mg/L	0-3000 mg/L
Total Alkalinity	160	0-1000
Total Hardness	120 mg/L	0-500 mg/L
Carbonates	NA mg/L	0-100 mg/L
Sulfates	240 mg/L	0-1500 mg/L
Potassium	200 mg/L	0-3000 mg/L
Iron	0 mg/L	0-300 mg/L

Circulation

Lost Circulation Experienced

No

Job Execution Information

Fluid	Product	Function	Density (lb/gal)	Yield (ft ³ /sk)	Water Rq. (gal/sk)	Water Rq. (gal/bbl)	Volume (sks)	Volume (bbl)	Designed Top (ft)
1	Water	Flush	8.34			42.00		20.00	0
2	Lead	Lead	12.30	2.31	13.15		158.00	64.94	0
3	Tail	Tail	12.80	2.03	11.15		187.00	67.71	500
4	Water	DisplacementFinal	8.34			42.00		87.70	0

Job Fluid Details

Fluid	Type	Fluid	Product	Function	Conc.	Uom
2	Lead	Lead	ASTM TYPE IL	Cement	100.00	%
2	Lead	Lead	A-10	Accelerator	5.00	%BWOB
2	Lead	Lead	A-2	Accelerator	3.00	lb/sk
2	Lead	Lead	A-7P	Accelerator	2.00	lb/sk
2	Lead	Lead	FP-24	Defoamer	0.30	%BWOB
2	Lead	Lead	IntegraSeal POLI	LostCirculation	0.25	lb/sk
2	Lead	Lead	STATIC FREE	Other	0.01	lb/sk
3	Tail	Tail	ASTM TYPE IL	Cement	100.00	%
3	Tail	Tail	A-10	Accelerator	5.00	%BWOB
3	Tail	Tail	A-2	Accelerator	2.00	lb/sk
3	Tail	Tail	A-7P	Accelerator	2.00	lb/sk
3	Tail	Tail	FP-24	Defoamer	0.30	%BWOB
3	Tail	Tail	IntegraSeal POLI	LostCirculation	0.25	lb/sk
3	Tail	Tail	STATIC FREE	Other	0.01	lb/sk

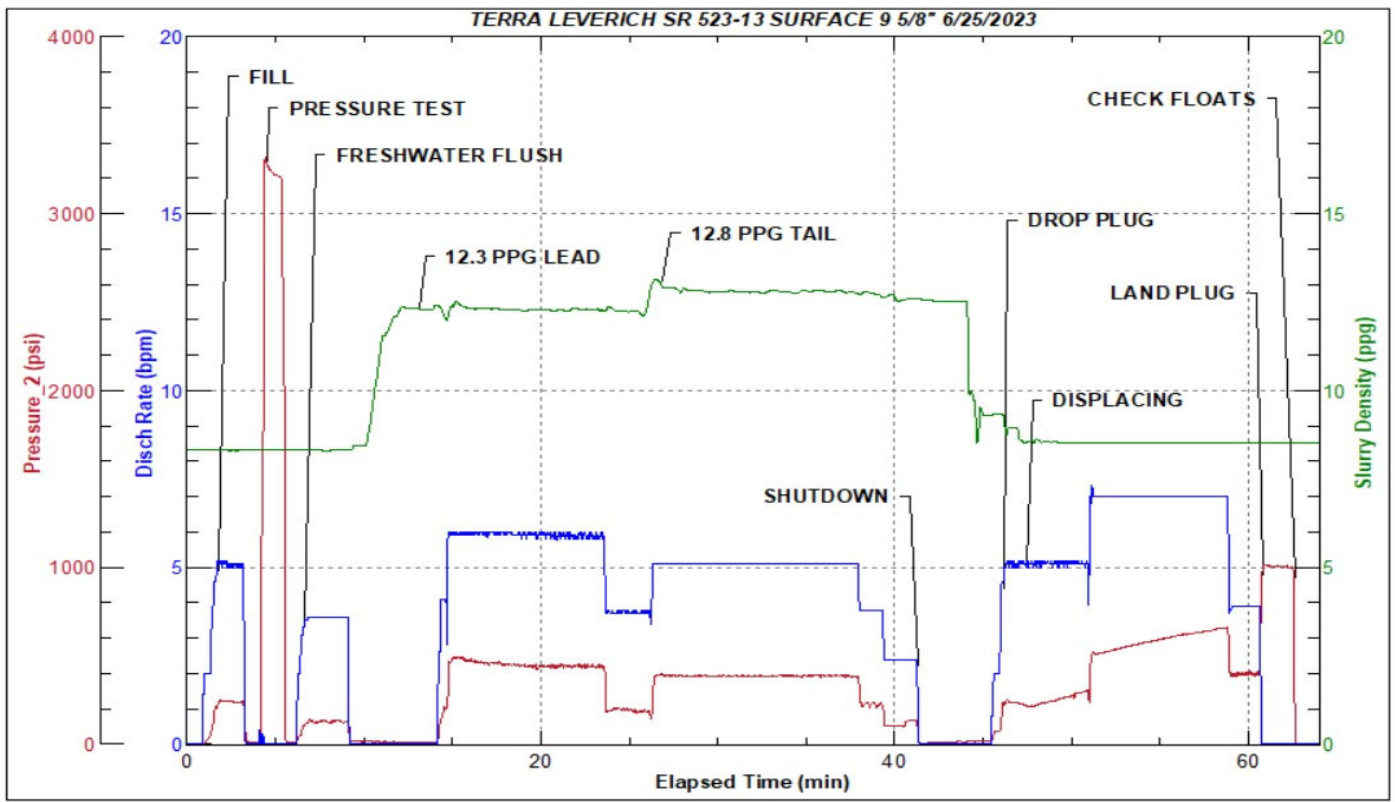
Job Logs

Line	Event	Date (MM/DD/YY)	Time (HH:MM)	Density (lb/gal)	Pump Rate (bpm)	Pump Volume (bbls)	Pipe Pressure (psi)	Comment
1	Callout	6/24/2023	18:20					CREW CALLED OUT FOR LOCATION TIME OF 00:00 6/25
2	Depart Location	6/24/2023	20:00					CREW DEPARTS STAGING FOR RIG LOCATION
3	Arrive On Location	6/24/2023	20:15					CREW AND EQUIPMENT ARRIVED ON LOCATION. RIG IS STILL DRILLING
4	Rig Up Iron	6/24/2023	23:30					PRE RIG UP MEETING / RIG UP IRON HOSES AND EQUIPMENT. ON STANDBY WAITING FOR CASING TO FINISH BEING RAN. CASING LANDED @ 2:30 RIG CIRCULATED .5 HOUR 295 BBLS
5	Safety Meeting	6/25/2023	03:00					PRE JOB SAFETY MEETING WITH RIG CREW AND COMPANY MAN. FINISH RIGGING UP HEAD AND FLOOR AFTER SAFETY MEETING.
6	Fill Lines	6/25/2023	03:24	8.34	5	10	237	FILL LINES WITH 10 BBLS OF FRESH WATER
7	Pressure Test Lines	6/25/2023	03:28	8.34	1	1	3350	PRESSURE TEST PUMP AND LINES TO 3000 PSI
8	Other	6/25/2023	03:31	8.34	5	10	255	PUMP 10 BBLS FRESH WATER SPACER FULL RETURNS
9	Pump Lead Cement	6/25/2023	03:38	12.3	6	0	487	BEGIN PUMPING 12.3 PPG, 2.31Y, 13.2MW LEAD CEMENT, WEIGHT VERIFIED BY MUD SCALE
10	Pump Lead Cement	6/25/2023	03:43	12.3	6	30	445	30 BBLS LEAD CEMENT PUMPED
11	Pump Lead Cement	6/25/2023	03:50	12.3	3.7	35	187	65 BBLS (158 SKS) LEAD CEMENT PUMPED FULL RETURNS
12	Pump Tail Cement	6/25/2023	03:50	12.8	5.1	0	390	BEGIN PUMPING 12.8 PPG, 2.03Y, 11.1MW TAIL CEMENT, WEIGHT VERIFIED BY MUD SCALE
13	Pump Tail Cement	6/25/2023	03:56	12.8	5.1	30	389	30 BBLS TAIL CEMENT PUMPED
14	Pump Tail Cement	6/25/2023	04:04	12.8	2.5	38	135	68 BBLS (187 SKS) TAIL CEMENT PUMPED FULL RETURNS.
15	Drop Top Plug	6/25/2023	04:09	8.34	4	0	235	DROP PLUG, WITNESSED BY COMPANY MAN. BEGIN PUMPING FRESH WATER DISPLACEMENT, FULL RETURNS
16	Pump Displacement	6/25/2023	04:13	8.34	5	20	299	20 BBLS DISPLACEMENT PUMPED, CAUGHT PLUG @ 20 BBLS DISPLACED. SPACER BACK @ 30 BBLS FULL RETURNS
17	Pump Displacement	6/25/2023	04:18	8.34	7	30	587	50 BBLS DISPLACEMENT PUMPED. CEMENT TO SURFACE @ 50 BBLS PUMPED, 37 BBLS TOTAL CEMENT TO SURFACE. MAX LIFT-640 PSI @ 7 BPM
18	Pump Displacement	6/25/2023	04:25	8.34	4	37.7	400	87.7 BBLS (CALCULATED) TOTAL DISPLACEMENT PUMPED
19	Land Plug	6/25/2023	04:25	8.34			1015	PLUG LANDED. FCP-400 PSI BUMP TO-1015 PSI
20	Check Floats	6/25/2023	04:26					BLEED OFF PRESSURE-CHECK FLOATS, FLOATS HELD .5 BBLS BACK
21	Rig Down Iron	6/25/2023	04:45					PRE RIG DOWN SAFETY MEETING, RIG DOWN EQUIPMENT, IRON AND HOSES
22	Depart Location	6/25/2023	06:00					CREW DEPARTS LOCATION FOR RCO YARD

Pump Diagrams



JobMaster Program Version 5.01C1
Job Number: 87493
Customer: TERRA
Well Name: LEVERICH SR 523-13



Job Start: Sunday, June 25, 2023