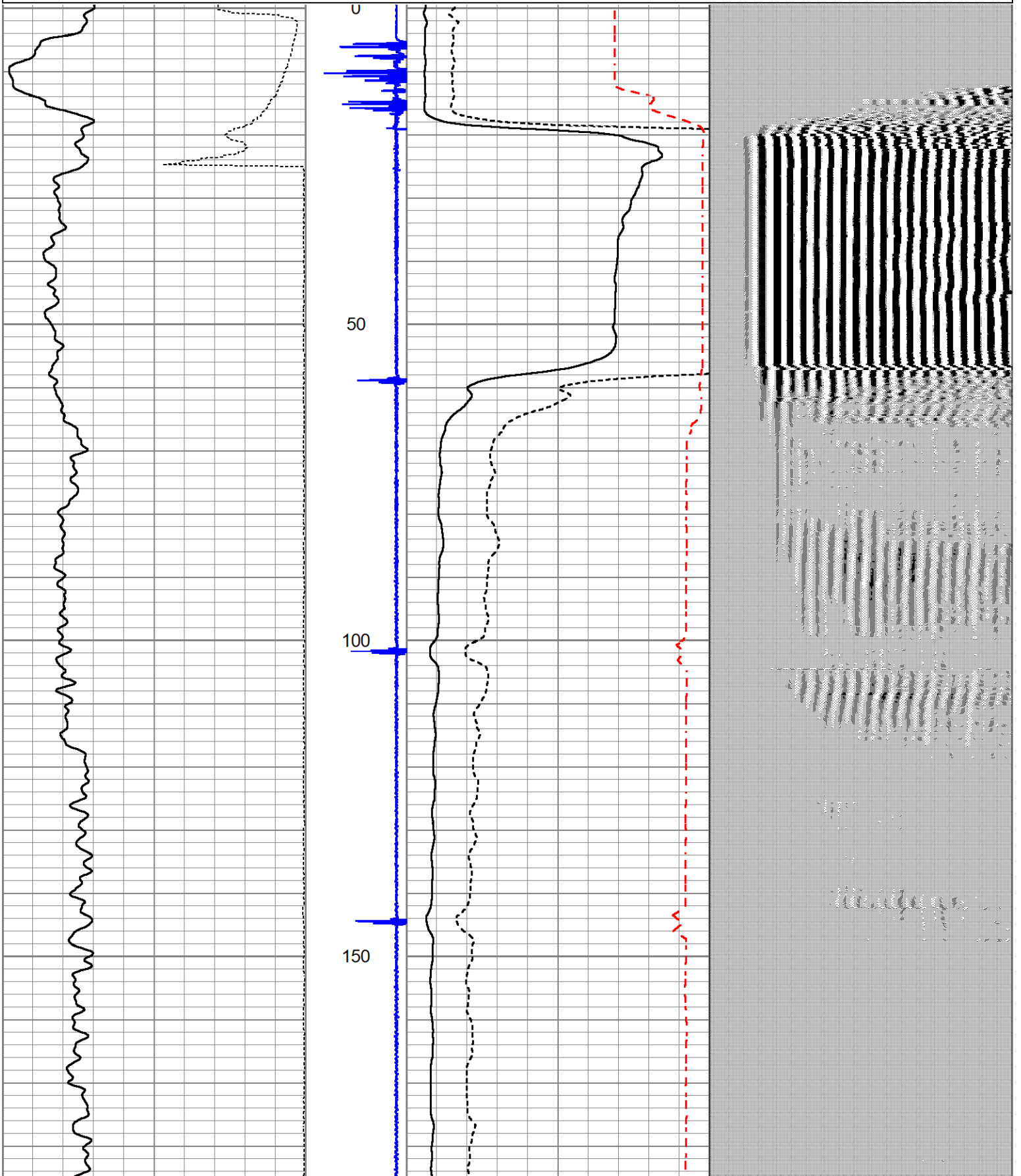
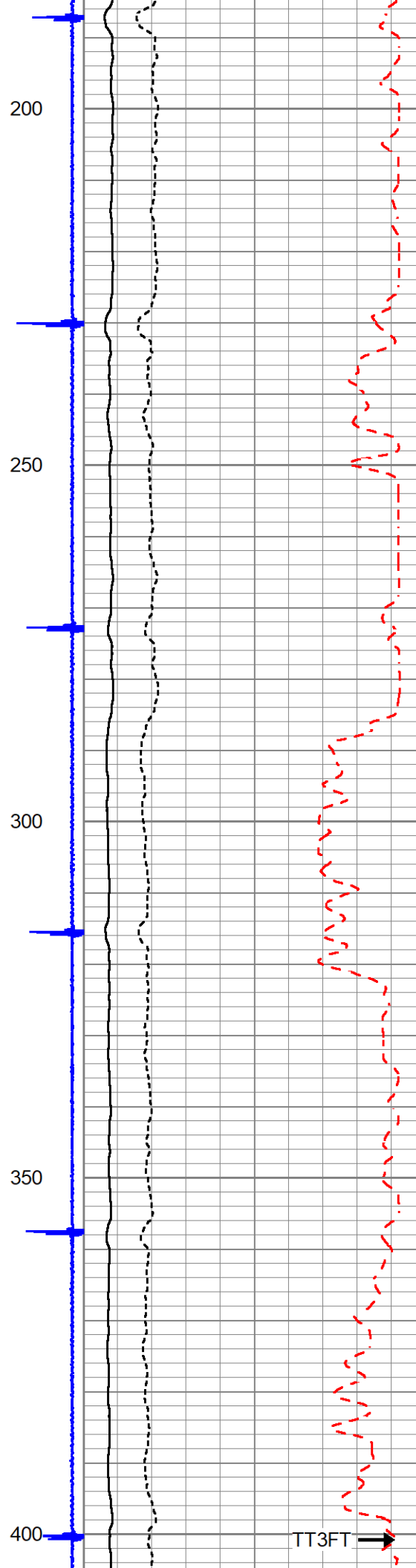
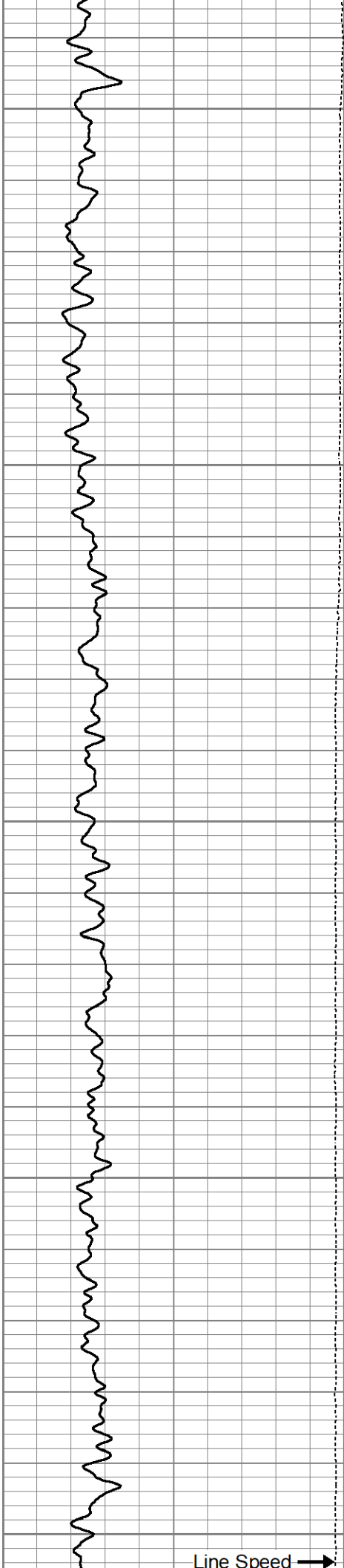
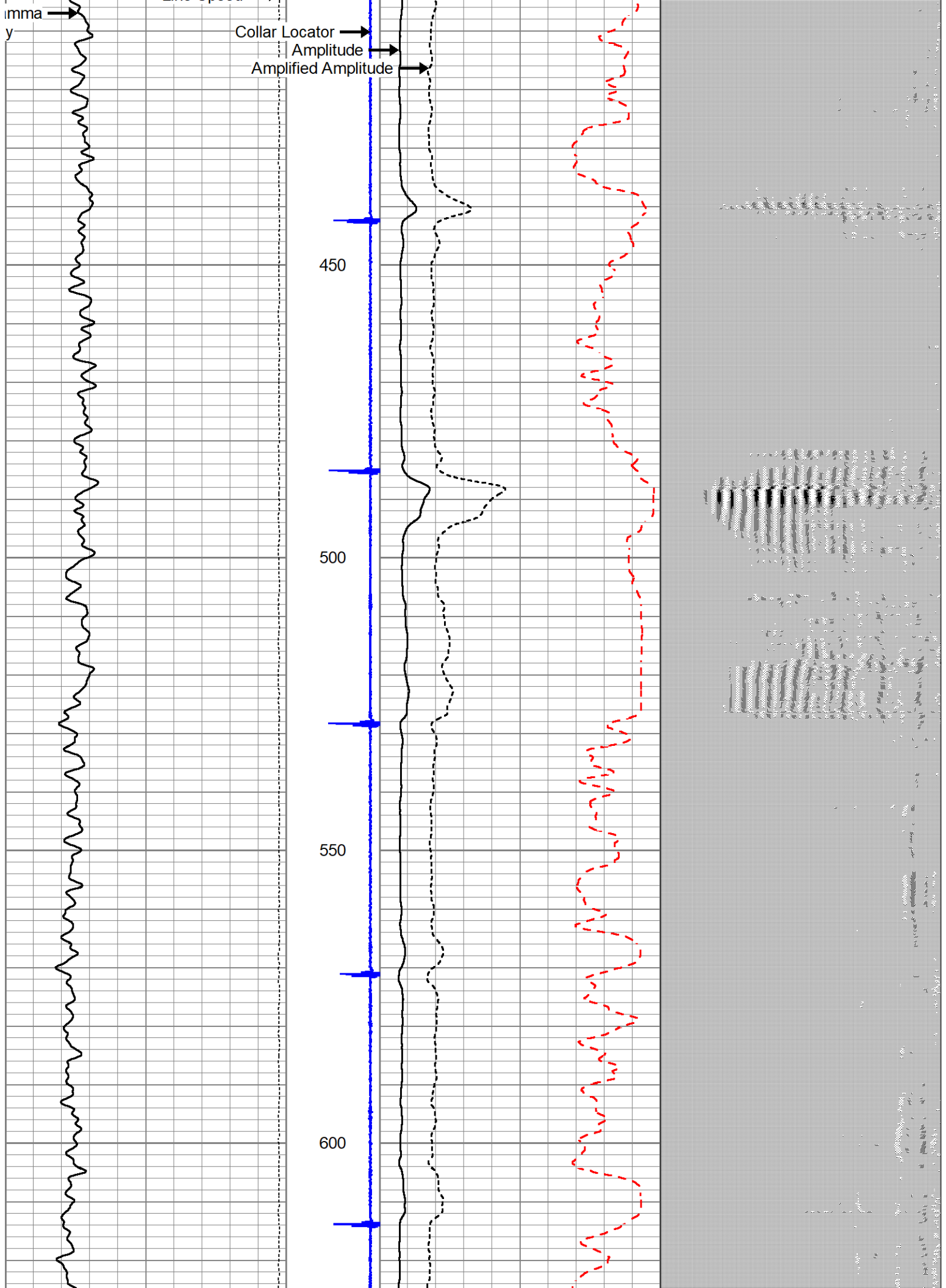


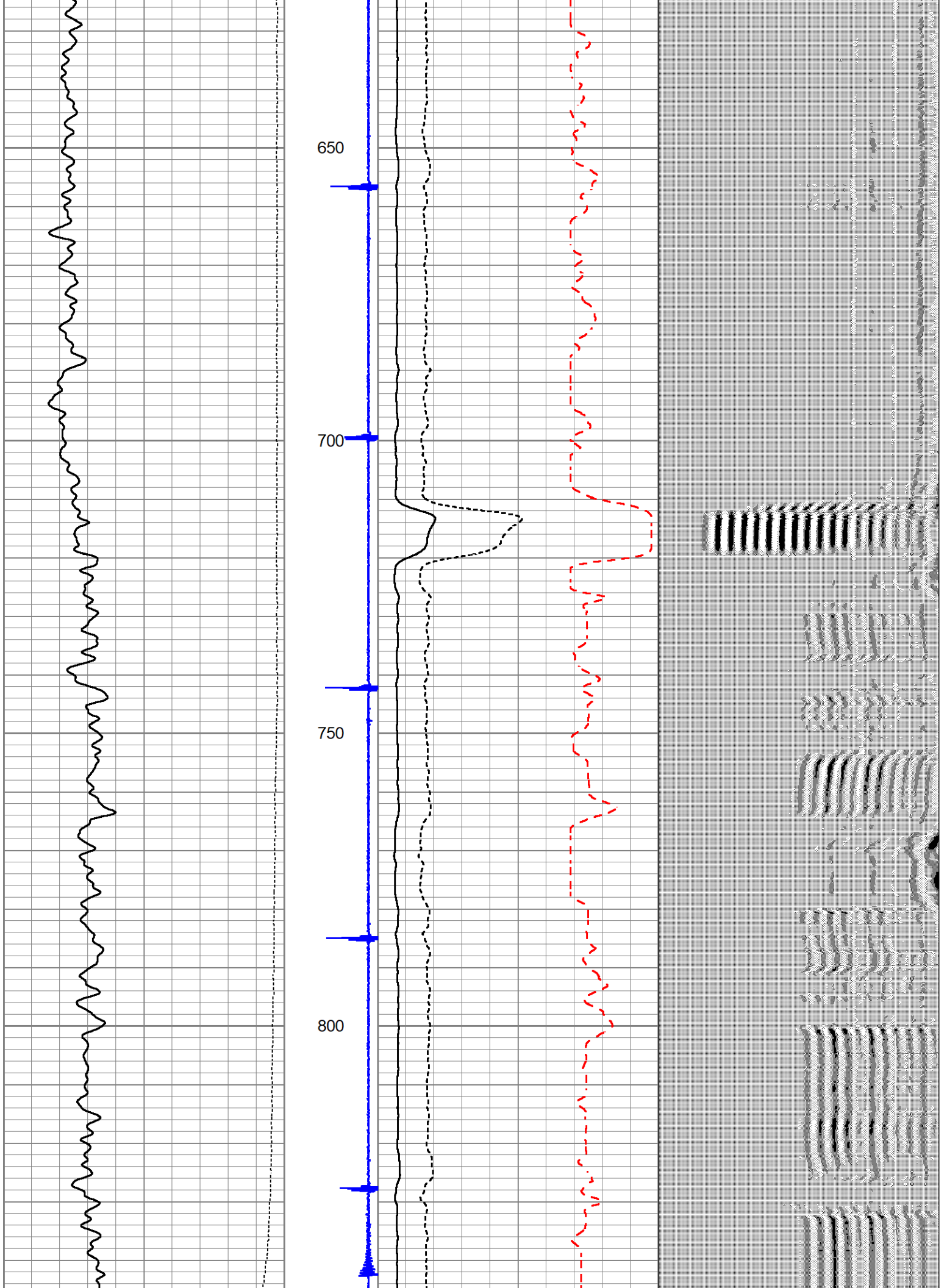
Database File chevron_nclp_pc_aa04-20_cbl.db
 Dataset Pathname rig14(523)/well/run1/pass5
 Presentation Format cbl_dr
 Dataset Creation Fri Sep 01 08:28:42 2023
 Charted by Depth in Feet scaled 1:240

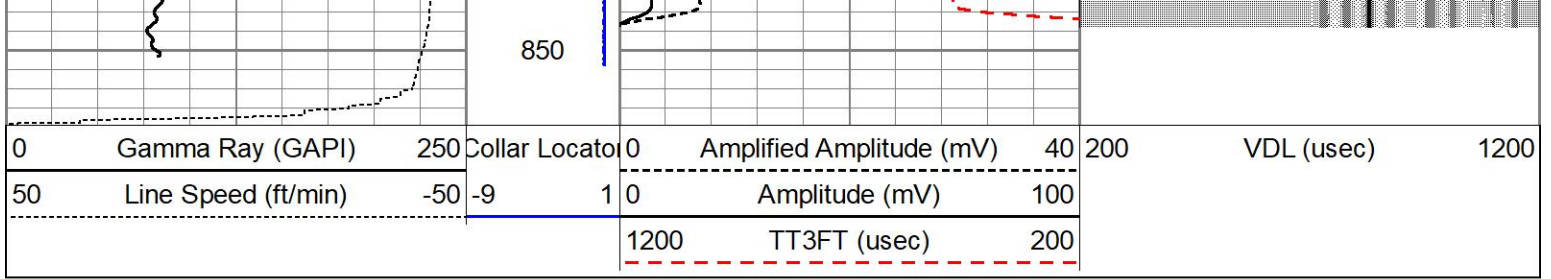
0	Gamma Ray (GAPI)	250	Collar Location	0	Amplified Amplitude (mV)	40	200	VDL (usec)	1200
50	Line Speed (ft/min)	-50	-9	1	0	Amplitude (mV)	100		
					1200	TT3FT (usec)	200		





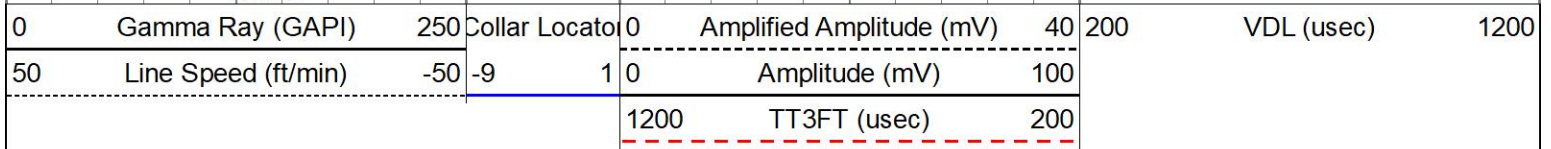
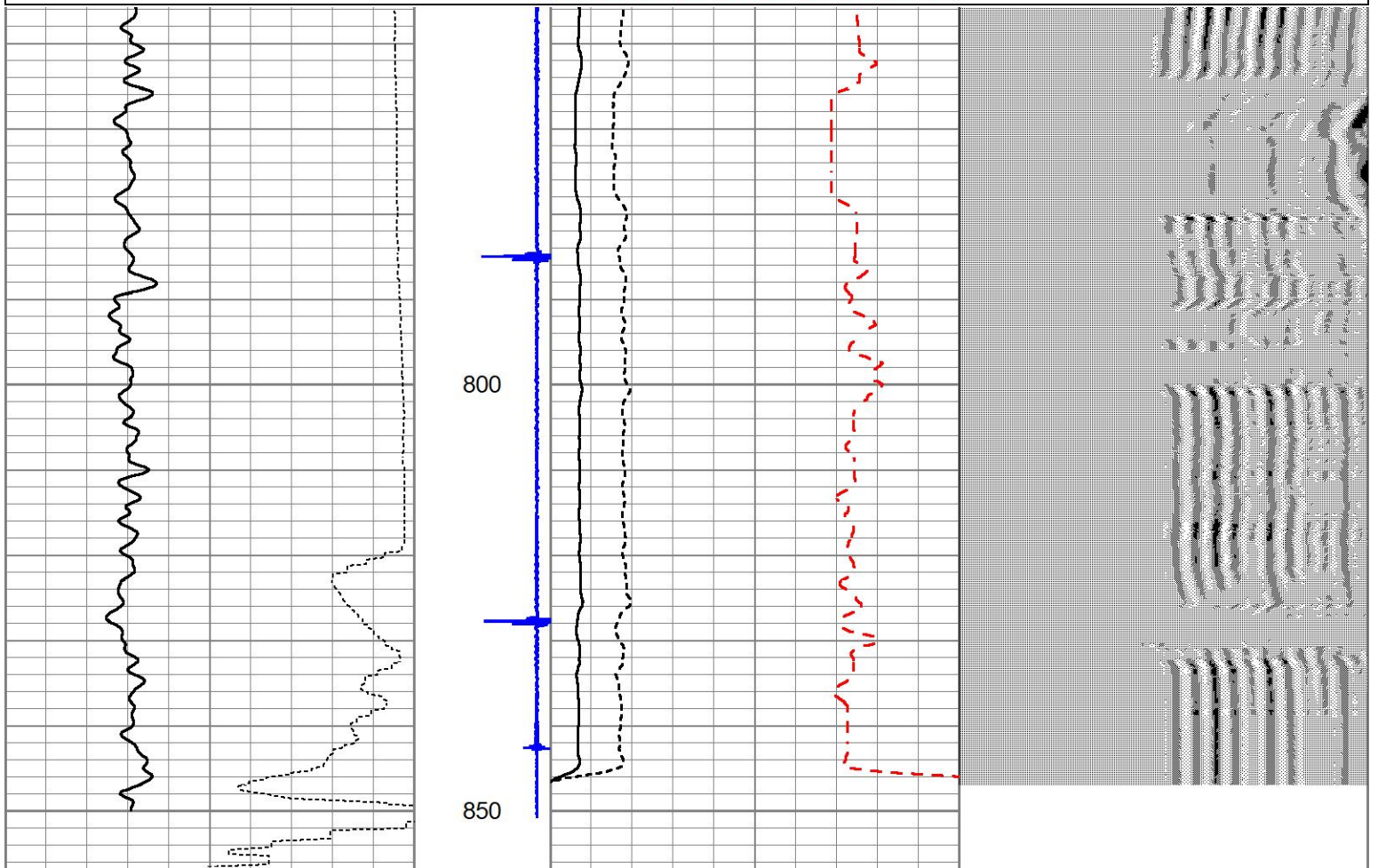
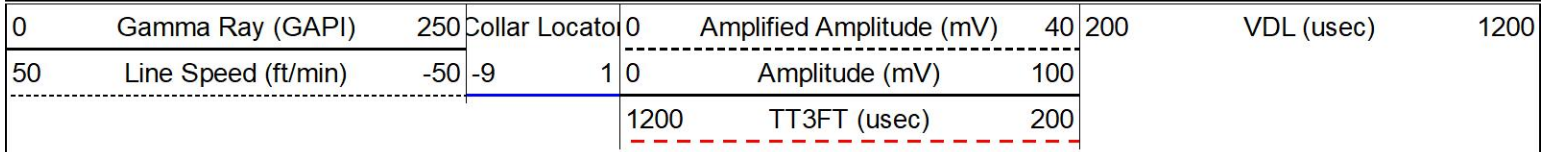






REPEAT PASS

Database File: chevron_nclp_pc_aa04-20_cbl.db
 Dataset Pathname: rig14(523)/well/run1/pass4
 Presentation Format: cbl_dr
 Dataset Creation: Fri Sep 01 08:24:37 2023
 Charted by: Depth in Feet scaled 1:240



Log Variables

Database: C:\ProgramData\Warrior\Data\chevron_nclp_pc_aa04-20_cbl.db
 Dataset: rig14(523)/well/run1/pass5/_vars_

Top - Bottom

BOREID in 7.875	BOTTEMP degF 100	CASEOD in 4.5	CASETHCK in 0	CASEWGHT lb/ft 11.6	MAXAMPL mV 0	MINAMPL mV 1	MINATTN db/ft 0.8
PERFS No	PPT usec 0	SRFTEMP degF 0	TDEPTH ft 0				

Variable Description

BOREID : Borehole I.D.	CASEWGHT : Casing Weight	PERFS : Perforation Flag
BOTTEMP : Bottom Hole Temperature	MAXAMPL : Maximum Amplitude	PPT : Predicted Pipe Time
CASEOD : Casing O.D.	MINAMPL : Minimum Amplitude	SRFTEMP : Surface Temperature
CASETHCK : Casing Thickness	MINATTN : Minimum Attenuation	TDEPTH : Total Depth

Calibration Report

Database File chevron_nclp_pc_aa04-20_cbl.db
 Dataset Pathname rig14(523)/well/run1/pass5
 Dataset Creation Fri Sep 01 08:28:42 2023

Gamma Ray Calibration Report

Type / Serial: Probe275dig / pr051003

SHOP CALIBRATION

Thu Oct 27 14:35:18 2005

	Counts/Sec.	Gain	Offset	Jig	Units
Background	41.0				cps
Calibrator	340.3				cps
		0.8720			GAPI/cps

PRIMARY VERIFICATION

00:00:00

Background	33.2				cps
Calibrator	288.5				cps
Difference				255.3	GAPI

BEFORE SURVEY VERIFICATION

00:00:00

Background	34.4				cps
Calibrator	292.8				cps
Difference				258.4	GAPI

AFTER SURVEY VERIFICATION

00:00:00

Background	33.6				cps
Calibrator	289.8				cps
Difference				256.2	GAPI

Segmented Cement Bond Log Calibration Report

Serial Number:	275	
Tool Model:	Probe	
Calibration Casing Diameter:	4.500	in
Calibration Depth:	34.200	ft

Master Calibration, performed Fri Sep 1 08:12:35 2023:

Raw (v)		Calibrated (mv)		Results	
Zero	Cal	Zero	Cal	Gain	Offset

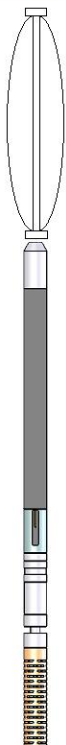
3'	0.007	1.016	0.000	81.196	80.491	-0.566
CAL						
5'	0.104	0.694	0.000	81.196	137.592	-14.243
SUM						
S1						
S2						
S3						
S4						
S5						
S6						
S7						
S8						

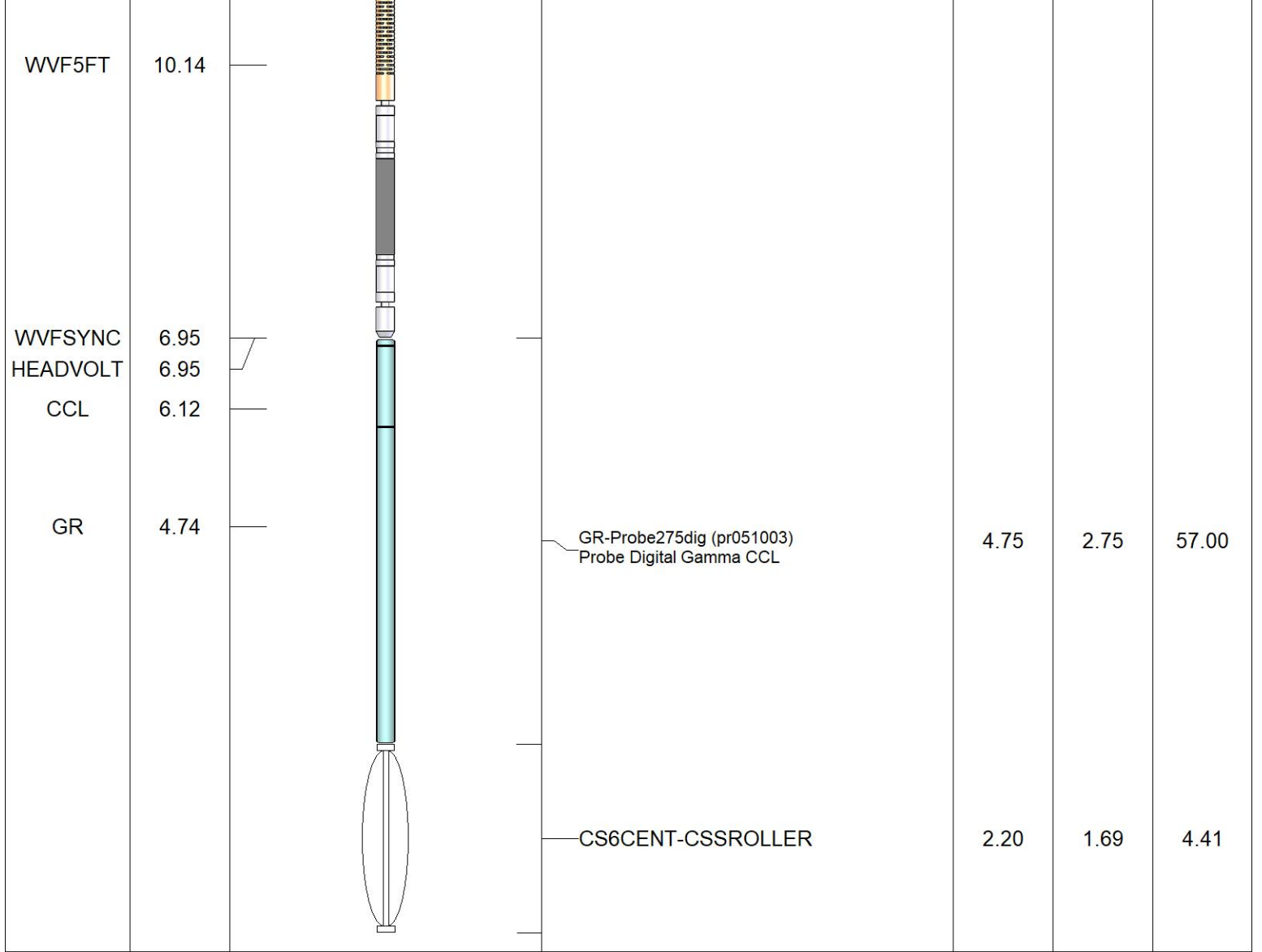
Internal Reference Calibration, performed (Not Performed):

	Raw (v)		Calibrated (v)		Results	
	Zero	Cal	Zero	Cal	Gain	Offset
CAL						

Air Zero Calibration, performed Thu May 28 09:57:00 2020:

	Raw (v)		Calibrated (v)		Results	
	Zero		Zero		Offset	
3'	0.000		0.000		0.000	
5'	0.000		0.000		0.000	
SUM						
S1						
S2						
S3						
S4						
S5						
S6						
S7						
S8						

Sensor	Offset (ft)	Schematic	Description	Length (ft)	O.D. (in)	Weight (lb)
			CS6CENT-CSSROLLER	2.20	1.69	4.41
WVF3FT	11.14		CBL-Probe (275) Probe 2.75" Dual Receiver Bond	8.75	2.75	60.00



Dataset: chevron_nclp_pc_aa04-20_cbl.db: rig14(523)/well/run1/pass5
 Total length: 17.90 ft
 Total weight: 125.82 lb
 O.D.: 2.75 in