



WGS84
±16ft

40.08595, -104.94936

ft
±11ft

5022

°T
±12

S189

THIS MACHINE
STARTS
AUTOMATICALLY

ECMC
ELECTRIC CONTROL
(303) 625-1822 OR
PELIER WELL NO 2
WELLS 06-14 350-1700-0000
WELLS COUNTY, COLORADO



28Nov23 12:07 Peltier #2 ECMC Environmental Inspection
© 28-Nov-23 12:07:55 PM





28Nov23 12:08 Peltier #2 ECMC Environmental Inspection
© 28-Nov-23 12:08:41 PM





WGS84
±16ft

40.08585, -104.94935

ft
±11ft

5023

°T
±15

NW331



28Nov23 12:09 Peltier #2 ECMC Environmental Inspection
© 28-Nov-23 12:09:22 PM



WGS84
±16ft

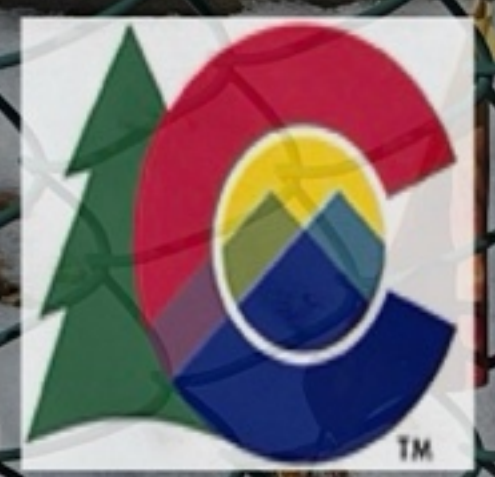
40.08589, -104.94928

ft
±1ft

5019

±14

W259



28Nov23 12:09 Peltier #2 EGMC Environmental Inspection
© 28 Nov 23 12:09 46 PM

WGS84 40.08598, -104.94923 N 5023 N359
±16ft ±11ft ±14ft



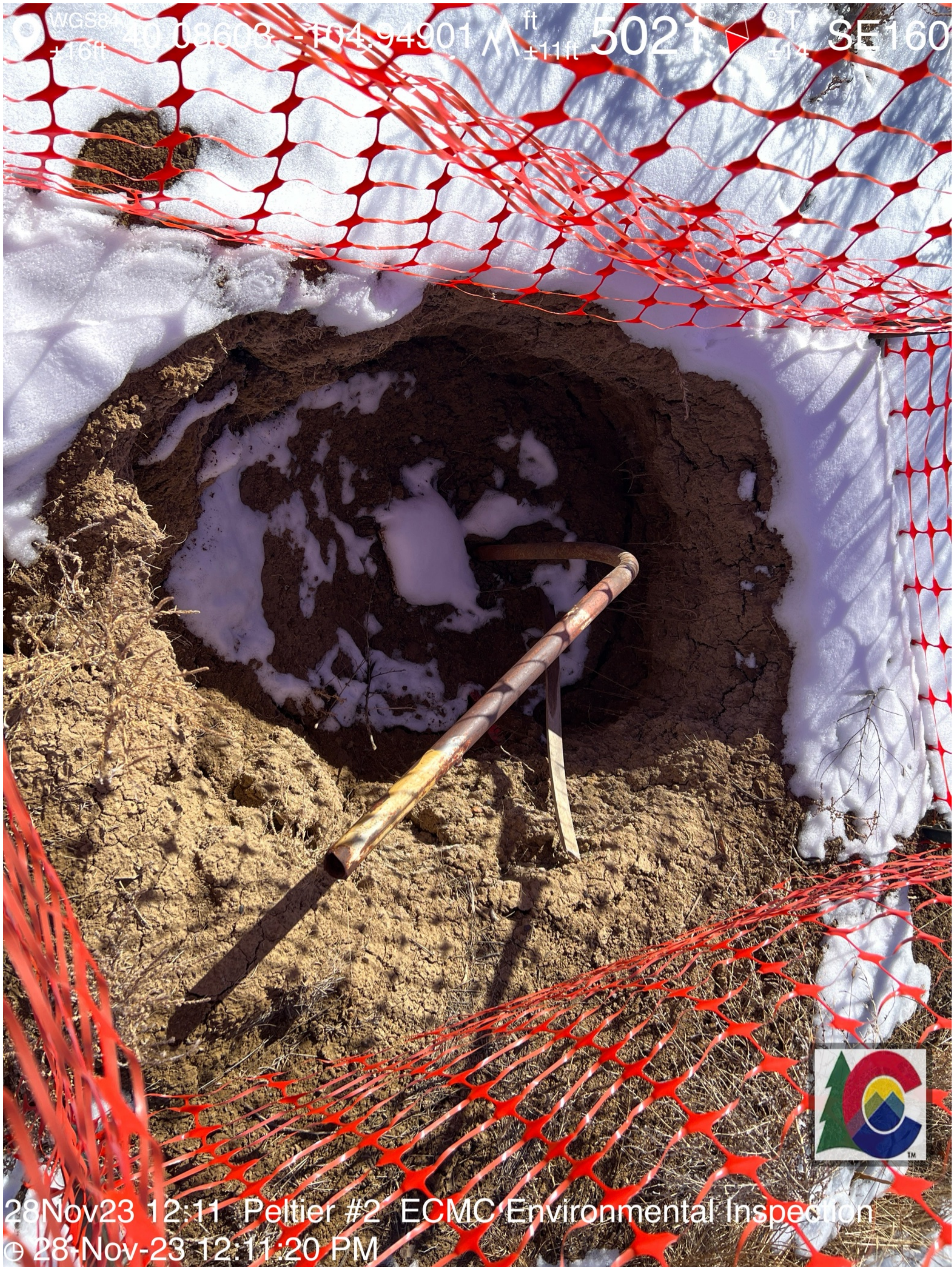
28Nov23 12:10 Peltier #2 ECMC Environmental Inspection
© 28-Nov-23 12:10:08 PM











WGS84 40 08603 -104.94901 N 5021 SE160
±16ft ±11ft ±14



28Nov23 12:11 Peltier #2 ECMC Environmental Inspection
© 28-Nov-23 12:11:20 PM



WGS84
±16ft
40.08604, -104.94902

ft
±11ft

5022

°T
±14

SW240



28Nov23 12:11 Peltier #2 ECMC Environmental Inspection
© 28-Nov-23 12:11:37 PM







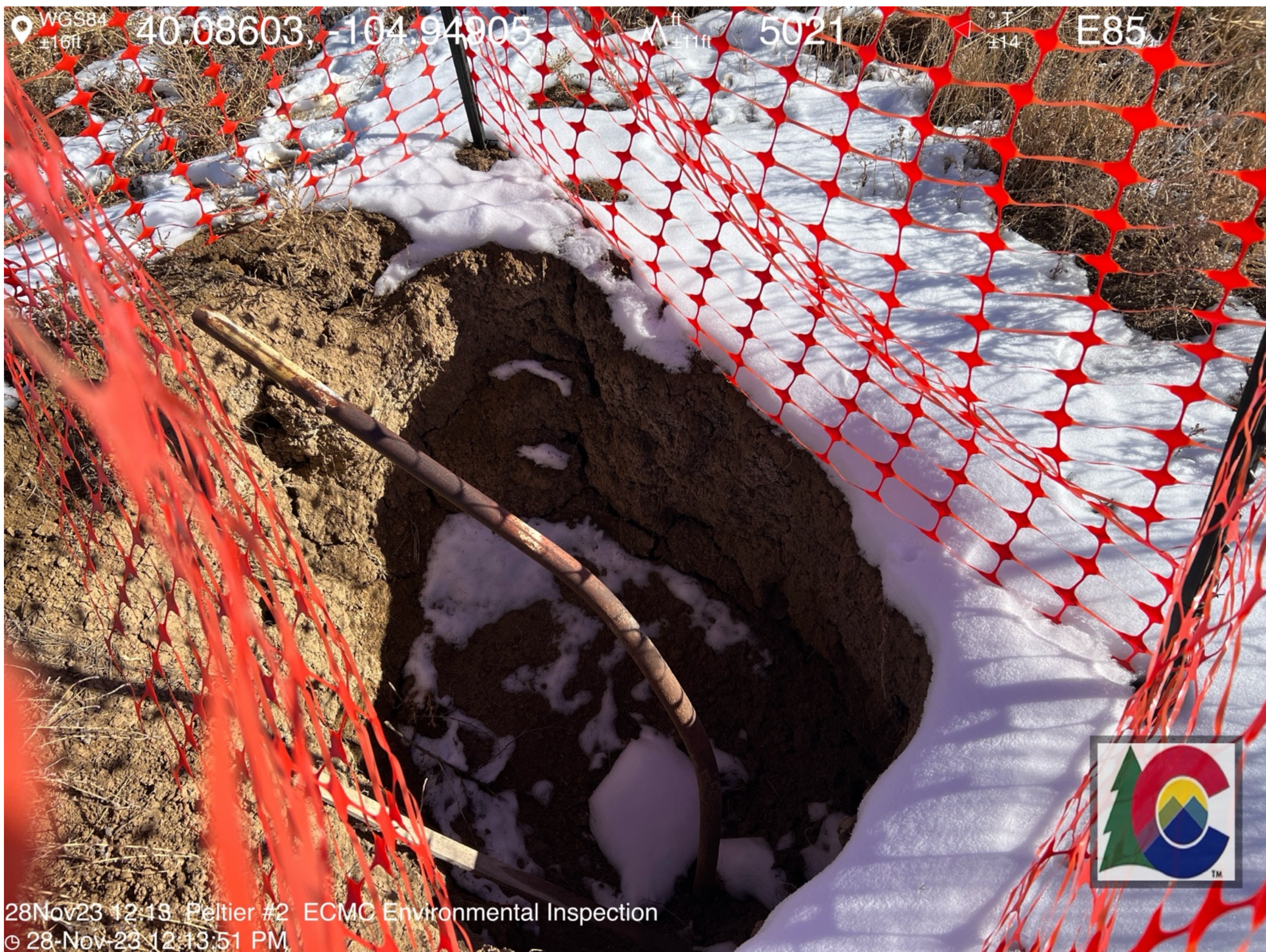


28Nov23 12:12 Peltier #2 ECMC Environmental Inspection
© 28-Nov-23 12:12:55 PM



28-Nov-23 12:13 Peltier #2 ECMC Environmental Inspection
© 28-Nov-23 12:13:23 PM





WGS84
±16ft

40.08603, -104.94905

Alt
±11ft

5021

±14

E85



28Nov23 12:13 Peltier #2 ECMC Environmental Inspection
© 28-Nov-23 12:13:51 PM