



Terra Energy Partners, LLC

SURFACE POST JOB REPORT

Leverich SR 323-13 05-045-24564
S:13 T:7S R:94W Garfield CO

CallSheet #: 87938
Proposal #: 70426



SURFACE Post Job Report

Attention: Mr. Dustin Childers | (936) 524-8828 | dchilders@terraep.com
Terra Energy Partners, LLC
4828 Loop Central Dr., Suite 900 | Houston, TX 77081

Dear Mr. Dustin Childers,

Thank you for the opportunity to provide cementing services on this well. American Cementing strives to achieve complete customer satisfaction. If you have any questions regarding the services or data provided, please contact American Cementing at any time.

Sincerely,

Krystal Schell

Field Engineer I | (719) 992-1830 | krystal.schell@americacementing.com

Field Office 28730 US-6, Rifle, CO 81650
Phone: (970) 657-1187

Job Details & Summary

Geometry

Type	Function	OD (in)	ID (in)	Weight (lb/ft)	Thread	Top (ft)	Bottom (ft)	Excess (%)
Casing	Outer	20	19.5	53	n/a	0	80	0
Open Hole	Outer	n/a	13.5	n/a	n/a	80	500	16
Open Hole	Outer	n/a	13.5	n/a	n/a	500	1175	16
Casing	Inner	9.625	8.921	36	n/a	0	1175	0

Equipment / People

Unit Type	Unit	Power Unit	Employee #1
Cement Trailer Float	CTF-263	TRC-112	Ridgeway, Danny
Cement Pump Float	CPF-136	TRH-855	Burton, Devin
Light Duty Vehicles	LDV-045		McClure, Gerron

Timing

Event	Date/Time
ERTS	00/24/2023 00:00
Call Out	7/24/2023 16:00
Depart Facility	7/24/2023 19:00
On Location	7/25/2023 00:00
Rig Up Iron	7/25/2023 01:00
Job Started	7/25/2023 03:20
Job Completed	7/25/2023 04:13
Rig Down Iron	7/25/2023 05:00
Depart Location	7/25/2023 06:00

General Job Information

Metrics	Value
Well Fluid Density	9 lb/gal
Well Fluid Type	WBM
Rig Circulation Vol	206 bbls
Rig Circulation Time	1 hours
Calculated Displacement	87.3 bbls
Actual Displacement	87.3 bbls
Total Spacer to Surface	20 bbls
Total CMT to Surface	37 bbls
Well Topped Out	No
Top Out Volume	N/A bbls

Job Details

Metrics	Value
Flare Prior to Job	No
Flare Prior to Job	N/A units
Flare During Job	No
Flare During Job	N/A units
Flare at End of Job	No
Flare at End of Job	N/A units
Well Full Prior to Job	Yes
Well Fluid Density Into Well	9 lb/gal
Well Fluid Density Out of Well	9 lb/gal

Job Details (cont.)

Metrics	Value
BHCT	81 °F
BHST	99 °F

Water Analysis

Metrics	Value	Recommended
Water Source	Upright Rig Tank	
Temperature	68 °F	50-80 °F
pH Level	6	5.5-8.5
Chlorides	500 mg/L	0-3000 mg/L
Total Alkalinity	200	0-1000
Total Hardness	50 mg/L	0-500 mg/L
Carbonates	10 mg/L	0-100 mg/L
Sulfates	100 mg/L	0-1500 mg/L
Potassium	200 mg/L	0-3000 mg/L
Iron	10 mg/L	0-300 mg/L

Circulation

Lost Circulation Experienced

No

Job Execution Information

Fluid	Product	Function	Density (lb/gal)	Yield (ft ³ /sk)	Water Rq. (gal/sk)	Water Rq. (gal/bbl)	Volume (sks)	Volume (bbl)	Designed Top (ft)
1	Water	Flush	8.34			42.00		20.00	0
2	Lead	Lead	12.30	2.31	13.15		158.00	64.94	0
3	Tail	Tail	12.80	2.03	11.15		187.00	67.71	500
4	Water	DisplacementFinal	8.34			42.00		85.00	0

Job Fluid Details

Fluid	Type	Fluid	Product	Function	Conc.	Uom
2	Lead	Lead	ASTM TYPE IL	Cement	100.00	%
2	Lead	Lead	A-10	Accelerator	5.00	%BWOB
2	Lead	Lead	A-2	Accelerator	3.00	lb/sk
2	Lead	Lead	A-7P	Accelerator	2.00	lb/sk
2	Lead	Lead	FP-24	Defoamer	0.30	%BWOB
2	Lead	Lead	IntegraSeal POLI	LostCirculation	0.25	lb/sk
2	Lead	Lead	STATIC FREE	Other	0.01	lb/sk
3	Tail	Tail	ASTM TYPE IL	Cement	100.00	%
3	Tail	Tail	A-10	Accelerator	5.00	%BWOB
3	Tail	Tail	A-2	Accelerator	2.00	lb/sk
3	Tail	Tail	A-7P	Accelerator	2.00	lb/sk
3	Tail	Tail	FP-24	Defoamer	0.30	%BWOB
3	Tail	Tail	IntegraSeal POLI	LostCirculation	0.25	lb/sk
3	Tail	Tail	STATIC FREE	Other	0.01	lb/sk

Job Logs

Line	Event	Date (MM/DD/YY)	Time (HH:MM)	Density (lb/gal)	Pump Rate (bpm)	Pump Volume (bbls)	Pipe Pressure (psi)	Comment
1	ARRIVED ON LOACTION	7/25/2023	00:00					ARRIVED ON LOCATION PER CUSTOMER REQUEST 00:00
2	HAZARD ASSESMENT	7/25/2023	00:05					
3	SPOT EQUIPMENT	7/25/2023	00:10					
4	PRE RIG UP SAFETY MEETING	7/25/2023	00:15					
5	RIGGED UP	7/25/2023	01:00					
6	PRE JOB SAFETY MEETING	7/25/2023	02:45					PRE JOB SAFETY MEETING
7	STAB HEAD	7/25/2023	03:00					
8	START JOB	7/25/2023	03:20					START JOB
9	PRESSURE TEST LINES	7/25/2023	03:21	8.34	1	1	2000	PRESSURE TEST 2000 PSI
10	20 BBL FRESH WATER SPACER	7/25/2023	03:24	8.34	5	20	360	20 BBL FRESH WATER SPACER
11	START LEAD CEMENT @ 12.3	7/25/2023	03:27	12.3	5	1	155	START LEAD CEMENT @ 12.3 (2.31,13.15) 158 SKS OR 65 BBLS
12	50 GONE ON LEAD	7/25/2023	03:36	12.3	6	50	385	
13	END OF LEAD CEMENT	7/25/2023	03:39	12.3	5	65	330	END OF LEAD CEMENT
14	START TAIL CEMENT @ 12.8	7/25/2023	03:39	12.8	5	1	407	START TAIL CEMENT @ 12.8 (2.03,11.15) 187 SACKS OR 68 BBLS
15	50 GONE ON TAIL	7/25/2023	03:47	12.8	6	50	400	
16	END OF TAIL	7/25/2023	03:56	12.8	3	68	130	END OF TAIL CEMENT
17	SHUTDOWN/ DROP TOP PLUG	7/25/2023	03:56					
18	START FW DISPLACEMENT	7/25/2023	03:59	8.34	3	1	230	START 87.2 BBL FRESH WATER DISPLACEMENT
19	CAUGHT CEMENT	7/25/2023	04:00	8.34	7	19	420	CAUGHT CEMENT @19 BBLS GONE ON DISPLACEMENT
20	50 BBL GONE ON DISPLACEMENT	7/25/2023	04:09	8.34	7	50	540	
21	PRESSURE BEFORE SLOW RATE	7/25/2023	04:11	8.34	7	77	580	PRESSURE BEFORE SLOW RATE - 580
22	SLOW RATE PRESSURE	7/25/2023	04:11	8.34	3	77	404	SLOWED RATE 3BPM - 404
23	PRESSURE BEFORE LANDING PLUG	7/25/2023	04:13	8.34	3	87	450	FINAL LIFT PRESSURE BEFORE LANDING PLUG - 450
24	LAND PLUG	7/25/2023	04:13	8.34	3	87	1300	LAND PLUG - 1300
25	CHECK FLOAT	7/25/2023	04:19					CHECK FLOAT RETURNED BBLS
26	END OF SERVICES	7/25/2023	04:20					END OF CEMENTING SERVICES
27	POST JOB/ PRE RIG DOWN SAFETY MEETING	7/25/2023	04:30					CIRCULATED 37 BBLS OR 90 SACKS
28	RIGGED DOWN	7/25/2023	05:00					
29	PRE CONVOY SAFETY MEETING	7/25/2023	05:15					
30	DEPART LOCATION	7/25/2023	05:30					
31	END OF JOB	7/25/2023	05:30					END OF JOB

Pump Diagrams

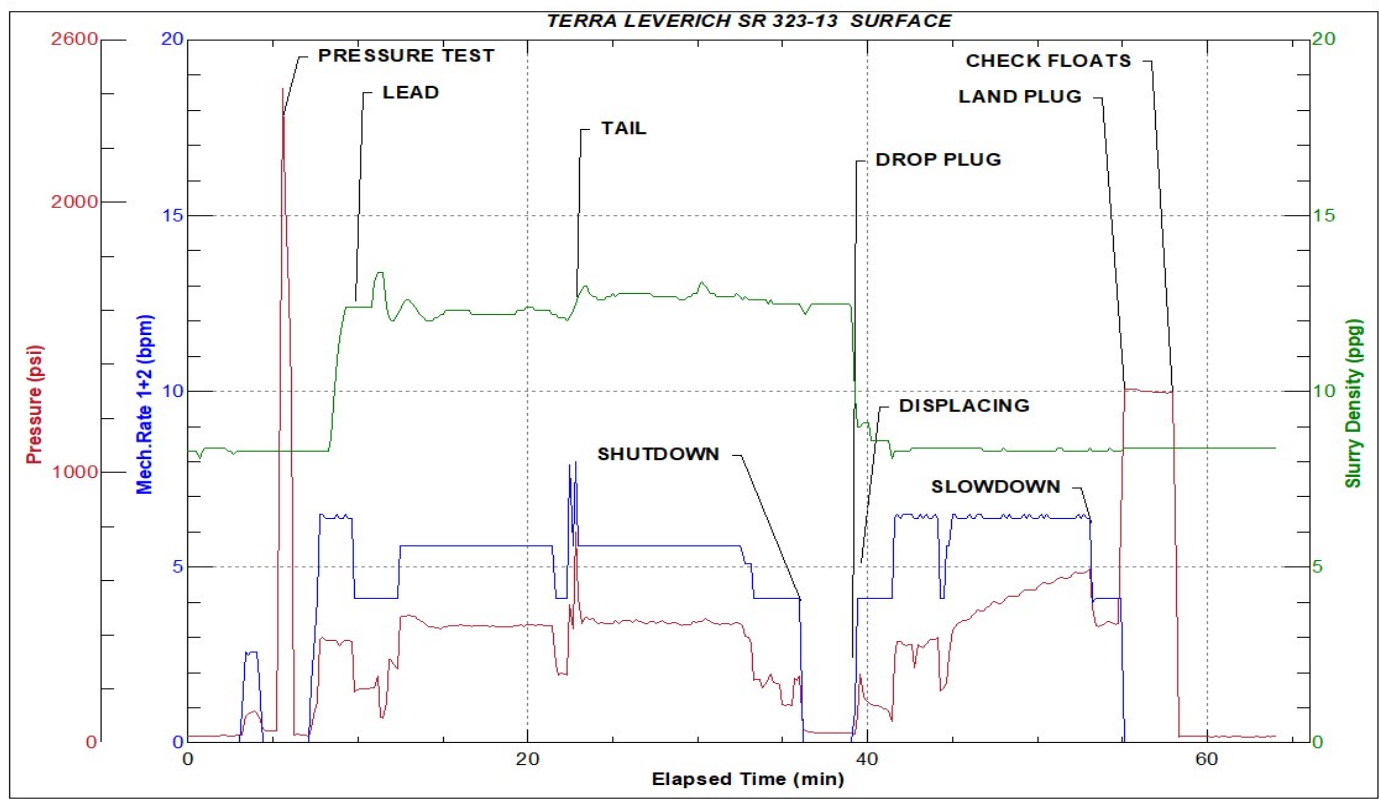


JobMaster Program Version 5.01C1

Job Number: 87938

Customer: TERRA

Well Name: LEVERICH SR 323-13



Job Start: Thursday, July 27, 2023