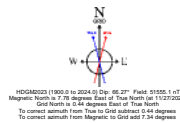


PETRO OPERATING CO, LLC



Location:	COLORADO	Slot:	SLOT#06 LG EVERIST 06 (1079'FNL & 1127'FWL,SEC.30)
Field:	WELD COUNTY (NAD83/GRID)	Well:	LG EVERIST 06
Facility:	SEC.30-T02N-R66W	Wellbore:	LG EVERIST 06 ST01 PWB
Plot reference wellpath is LG EVERIST 06 ST01 PWP Rev-B.0		Grid System: NAD83 / Lambert Colorado SP, Northern Zone (501), US feet	
True vertical depths are referenced to Ensign 140 (23.5) (RKB)		North Reference: Grid north	
Reference wellpath measured depths are referenced to Ensign 140 (23.5) (RKB)		Scale: True distance	
Ensign 140 (23.5) (RKB) to Mean Sea Level: 4897.5 feet		Coordinates are in feet referenced to Slot	
Mean Sea Level to Ground level (At Slot: SLOT#06 LG EVERIST 06 (1079'FNL & 1127'FWL,SEC.30)) -4874 feet		Depths are in feet	
Offset wellpath MDs are referenced to each path's default MD datum		Created by: palmsr on 2023-11-28; Database: WellArchitectDB	

Location Information

Facility Name	Grid East (US ft)	Grid North (US ft)	Latitude	Longitude
SEC.30-T02N-R66W	3188545.810	1284807.010	40°06'47.5934"N	104°49'33.1162"W
Slot	Local N (ft)	Local E (ft)	Grid East (US ft)	Grid North (US ft)
SLOT#06 LG EVERIST 06 (1079'FNL & 1127'FWL,SEC.30)	65.26	-37.02	3188508.787	1284872.269
Ensign 140 (23.5) (RKB) to Ground level (At Slot: SLOT#06 LG EVERIST 06 (1079'FNL & 1127'FWL,SEC.30))				23.58
Mean Sea Level to Ground level (At Slot: SLOT#06 LG EVERIST 06 (1079'FNL & 1127'FWL,SEC.30))				-4874ft
Ensign 140 (23.5) (RKB) to Mean Sea Level				4897.5ft

Survey Program

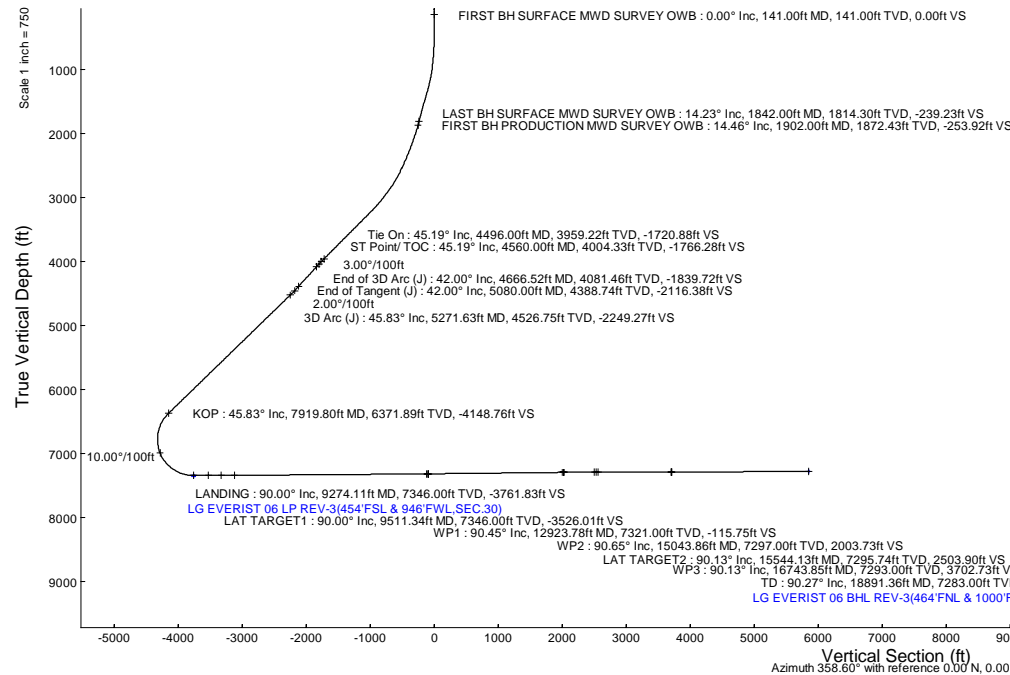
Start MD (ft)	End MD (ft)	Tool	Model	Log Name/Comment	Wellbore
23.50	141.00	BH MWD - Inclination Only	BH MWD - Inclination Only (Standard)	BH MWD - Inclination Only 13-12' <141>	LG EVERIST 06 AHB
141.00	331.00	OWSS MWD rev-2	OWSS MWD rev-2 + IPRI + Sag + Multi-Station Correction	OWSS MWD rev-2+IPRI+485+SAG 13-12' <236 - 331, 599, 779 - 867, 1047 - 1842>	LG EVERIST 06 AHB
331.00	510.00	OWSS MWD rev-2	OWSS MWD rev-2 + HRGM + Sag + Multi-Station Correction	OWSS MWD rev-2+HRGM+485+SAG 13-12' <421 - 510, 688, 907>	LG EVERIST 06 AHB
510.00	589.00	OWSS MWD rev-2	OWSS MWD rev-2 + IPRI + Sag + Multi-Station Correction	OWSS MWD rev-2+IPRI+485+SAG 13-12' <236 - 331, 599, 779 - 867, 1047 - 1842>	LG EVERIST 06 AHB
589.00	688.00	OWSS MWD rev-2	OWSS MWD rev-2 + HRGM + Sag + Multi-Station Correction	OWSS MWD rev-2+HRGM+485+SAG 13-12' <421 - 510, 688, 907>	LG EVERIST 06 AHB
688.00	867.00	OWSS MWD rev-2	OWSS MWD rev-2 + IPRI + Sag + Multi-Station Correction	OWSS MWD rev-2+IPRI+485+SAG 13-12' <236 - 331, 599, 779 - 867, 1047 - 1842>	LG EVERIST 06 AHB
867.00	957.00	OWSS MWD rev-2	OWSS MWD rev-2 + HRGM + Sag + Multi-Station Correction	OWSS MWD rev-2+HRGM+485+SAG 13-12' <421 - 510, 688, 907>	LG EVERIST 06 AHB
957.00	1842.00	OWSS MWD rev-2	OWSS MWD rev-2 + IPRI + Sag + Multi-Station Correction	OWSS MWD rev-2+IPRI+485+SAG 13-12' <236 - 331, 599, 779 - 867, 1047 - 1842>	LG EVERIST 06 AHB
1842.00	4496.00	OWSS MWD rev-2	OWSS MWD rev-2 + IPRI + Sag + Multi-Station Correction	OWSS MWD rev-2+IPRI+485+SAG 8-12' <1932 - 1887ft>	LG EVERIST 06 AHB
4496.00	18891.36	BH AutoTrack Curvatureless (2019)	BH AutoTrack Curvatureless (2019) IPRI, SAG, Short sagging		LG EVERIST 06 ST01 PWB

Bottom Hole Location

MD (ft)	Inc (°)	Az (°)	TVD (ft)	Local N (ft)	Local E (ft)	Grid East (US ft)	Grid North (US ft)	Latitude	Longitude
18891.36	90.267	0.812	7283.00	5846.87	-142.90	3188365.89	1290718.89	40°07'46.0296"N	104°49'34.8538"W

Targets

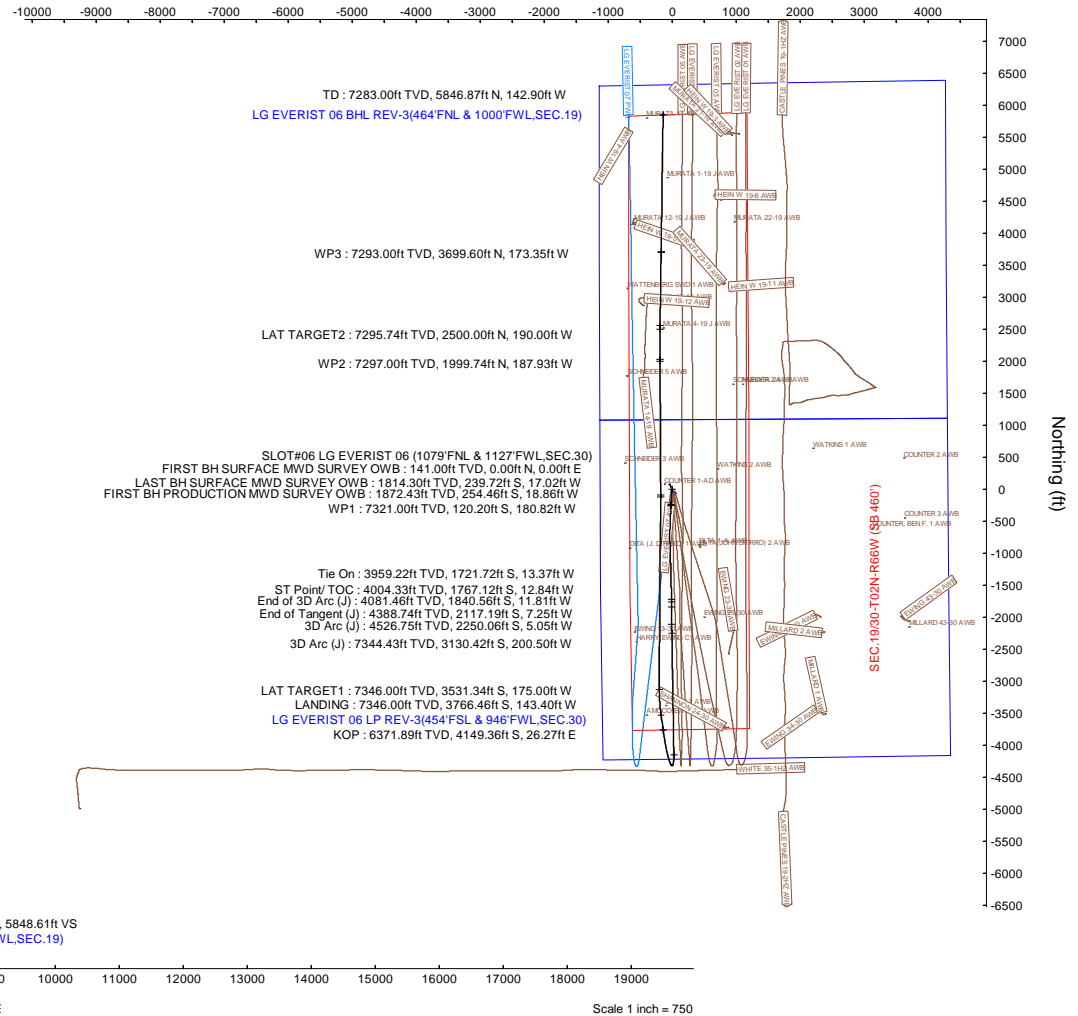
Name	MD (ft)	TVD (ft)	Local N (ft)	Local E (ft)	Grid East (US ft)	Grid North (US ft)	Latitude	Longitude
SEC.19-T02N-R66W	N/A	0.00	-65.26	37.02	3188545.81	1284807.01	40°06'47.5934"N	104°49'33.1162"W
SEC.19/30-T02N-R66W (SB 460)	N/A	0.00	-65.26	37.02	3188545.81	1284807.01	40°06'47.5934"N	104°49'33.1162"W
SEC.30-T02N-R66W	N/A	0.00	-65.26	37.02	3188545.81	1284807.01	40°06'47.5934"N	104°49'33.1162"W
LG EVERIST 06 BHL REV-3(464'FNL & 1000'FWL,SEC.19)	N/A	7283.00	5846.87	-142.90	3188365.89	1290718.89	40°07'46.0296"N	104°49'34.8538"W
LG EVERIST 06 BHL REV-3(464'FNL & 1000'FWL,SEC.19)	18891.36	7283.00	5846.87	-142.90	3188365.89	1290718.89	40°07'46.0296"N	104°49'34.8538"W
LG EVERIST 06 LP REV-3(454'FSL & 946'FWL,SEC.30)	9274.11	7346.00	-3766.46	-143.40	3188365.39	1281105.97	40°08'11.0323"N	104°49'35.8001"W
LG EVERIST 06 LP REV-2(454'FSL & 946'FWL,SEC.30)	N/A	7356.00	-3766.46	-143.40	3188365.39	1281105.97	40°08'11.0323"N	104°49'35.8001"W



Well Profile Data							
Design Comment	MD (ft)	Inc (°)	Az (°)	TVD (ft)	Local N (ft)	Local E (ft)	VS (ft)
Tie On	4496.00	45.190	179.330	3959.22	-1721.72	-13.37	1.09
ST Point/ TOC	4560.00	45.190	179.330	4004.33	-1767.12	-12.84	0.00
End of 3D Arc (J)	4666.52	42.000	179.055	4081.46	-1840.56	-11.81	3.00
End of Tangent (J)	5080.00	42.000	179.055	4388.74	-2117.19	-7.25	0.00
3D Arc (J)	5271.63	45.833	179.055	4526.75	-2250.06	-5.05	2.00
KOP	7919.80	45.833	179.055	6371.89	-4149.36	26.27	0.00
LANDING	9274.11	90.000	352.346	7346.00	-3766.46	-143.40	10.00
LAT TARGET1	9511.34	90.000	352.346	7346.00	-3531.34	-175.00	0.00
3D Arc (J)	9913.40	90.446	0.375	7344.43	-3130.42	-200.50	2.00
WP1	12923.78	90.446	0.375	7321.00	-120.20	-180.82	0.00
3D Arc (J)	12954.09	90.650	359.804	7320.71	-89.89	-180.77	2.00
WP2	15043.86	90.650	359.804	7297.00	1999.74	-187.93	0.00
3D Arc (J)	15069.91	90.131	359.762	7296.82	2025.79	-188.03	2.00
LAT TARGET2	15544.13	90.131	359.762	7295.74	2500.00	-190.00	0.00
3D Arc (J)	15596.96	90.131	0.818	7295.62	2552.83	-189.73	2.00
WP3	16743.85	90.131	0.818	7293.00	3699.60	-173.35	0.00
3D Arc (J)	16750.67	90.267	0.812	7292.98	3706.41	-173.25	2.00
TD	18891.36	90.267	0.812	7283.00	5846.87	-142.90	0.00

Scale 1 inch = 750

Easting (ft)





Planned Wellpath Report

LG EVERIST 06 ST01 PWP Rev-B.0

Page 1 of 8



REFERENCE WELLPATH IDENTIFICATION

Operator	PETRO OPERATING CO, LLC	Well	LG EVERIST 06
Field	WELD COUNTY (NAD83/GRID)	API	0512352229
Facility	SEC.30-T02N-R66W	Wellbore	LG EVERIST 06 ST01 PWB
Slot	SLOT#06 LG EVERIST 06 (1079'FNL & 1127'FWL,SEC.30)	Sidetrack from	LG EVERIST 06 AWP at 4496.00 MD

REPORT SETUP INFORMATION

Projection System	NAD83 / Lambert Colorado SP, Northern Zone (501), US feet	Software System	WellArchitect® 6.0
North Reference	Grid	User	Painsetr
Scale	0.999960	Report Generated	11/28/2023 at 3:44:28 PM
Convergence at slot	0.44° East	Database	WellArchitectDB

WELLPATH LOCATION

	Local coordinates		Grid coordinates		Geographic coordinates	
	North[ft]	East[ft]	Easting[US ft]	Northing[US ft]	Latitude	Longitude
Slot Location	65.26	-37.02	3188508.79	1284872.27	40.1134003°	-104.8259962°
Facility Reference Pt			3188545.81	1284807.01	40.1132204°	-104.8258656°
Field Reference Pt			3188545.81	1284807.01	40.1132204°	-104.8258656°

WELLPATH DATUM

Calculation method	Minimum curvature	Ensign 140 (23.5') (RKB) to Facility Vertical Datum	4897.50ft
Horizontal Reference Pt	Slot	Ensign 140 (23.5') (RKB) to Mean Sea Level	4897.50ft
Vertical Reference Pt	Ensign 140 (23.5') (RKB)	Ensign 140 (23.5') (RKB) to Ground Level at Slot (SLOT#06 LG EVERIST 06 (1079'FNL & 1127'FWL,SEC.30))	23.50ft
MD Reference Pt	Ensign 140 (23.5') (RKB)	Section Origin	N 0.00, E 0.00 ft
Field Vertical Reference	Mean Sea Level	Section Azimuth	358.60°



Planned Wellpath Report

LG EVERIST 06 ST01 PWP Rev-B.0

Page 2 of 8



REFERENCE WELLPATH IDENTIFICATION

Operator	PETRO OPERATING CO, LLC	Well	LG EVERIST 06
Field	WELD COUNTY (NAD83/GRID)	API	0512352229
Facility	SEC.30-T02N-R66W	Wellbore	LG EVERIST 06 ST01 PWB
Slot	SLOT#06 LG EVERIST 06 (1079'FNL & 1127'FWL, SEC.30)	Sidetrack from	LG EVERIST 06 AWP at 4496.00 MD

WELLPATH DATA (212 stations) † = interpolated, ‡ = extrapolated station

MD [ft]	Inclination [°]	Azimuth [°]	TVD [ft]	Vert Sect [ft]	North [ft]	East [ft]	Grid East [US ft]	Grid North [US ft]	Latitude	Longitude	DLS ["/100ft]	Comments
0.00†	0.000	N/A	0.00	0.00	0.00	0.00	3188508.79	1284872.27	40.1134003	-104.8259962	0.00	
23.50	0.000	N/A	23.50	0.00	0.00	0.00	3188508.79	1284872.27	40.1134003	-104.8259962	0.00	
141.00	0.610	N/A	141.00	0.00	0.00	0.00	3188508.79	1284872.27	40.1134003	-104.8259962	0.00	FIRST BH SURFACE MWD SURVEY OWB
236.00	0.550	200.920	236.00	-0.42	-0.43	-0.16	3188508.62	1284871.84	40.1133991	-104.8259968	0.58	
331.00	0.580	206.110	330.99	-1.27	-1.28	-0.54	3188508.25	1284870.99	40.1133968	-104.8259981	0.06	
421.00	0.570	236.950	420.99	-1.91	-1.94	-1.11	3188507.67	1284870.33	40.1133950	-104.8260002	0.34	
510.00	0.590	229.750	509.98	-2.43	-2.47	-1.83	3188506.95	1284869.79	40.1133936	-104.8260028	0.08	
599.00	1.400	205.880	598.97	-3.68	-3.75	-2.66	3188506.13	1284868.52	40.1133901	-104.8260058	1.00	
688.00	3.090	187.000	687.90	-7.02	-7.11	-3.43	3188505.36	1284865.16	40.1133809	-104.8260086	2.05	
778.00	3.720	183.440	777.74	-12.33	-12.43	-3.90	3188504.89	1284859.84	40.1133663	-104.8260105	0.74	
867.00	5.500	185.990	866.45	-19.44	-19.55	-4.51	3188504.27	1284852.72	40.1133467	-104.8260129	2.01	
957.00	6.920	186.020	955.92	-29.09	-29.24	-5.53	3188503.25	1284843.03	40.1133202	-104.8260168	1.58	
1047.00	8.310	183.000	1045.12	-40.95	-41.12	-6.44	3188502.35	1284831.15	40.1132876	-104.8260203	1.61	
1137.00	11.660	180.880	1133.75	-56.53	-56.72	-6.92	3188501.87	1284815.55	40.1132448	-104.8260225	3.74	
1226.00	13.490	181.210	1220.61	-75.89	-76.09	-7.28	3188501.51	1284796.18	40.1131916	-104.8260243	2.06	
1315.00	14.620	181.640	1306.94	-97.48	-97.70	-7.82	3188500.97	1284774.58	40.1131323	-104.8260268	1.28	
1404.00	16.180	184.750	1392.75	-121.02	-121.28	-9.17	3188499.62	1284750.99	40.1130676	-104.8260323	1.98	
1494.00	16.500	184.850	1479.11	-146.19	-146.51	-11.29	3188497.50	1284725.76	40.1129984	-104.8260405	0.36	
1583.00	16.590	184.010	1564.43	-171.41	-171.78	-13.24	3188495.54	1284700.49	40.1129290	-104.8260482	0.29	
1672.00	15.660	183.230	1649.92	-196.03	-196.45	-14.81	3188493.98	1284675.83	40.1128614	-104.8260545	1.07	
1762.00	14.550	181.760	1736.81	-219.43	-219.88	-15.84	3188492.95	1284652.40	40.1127971	-104.8260588	1.30	
1842.00	14.230	185.080	1814.30	-239.23	-239.72	-17.02	3188491.77	1284632.56	40.1127426	-104.8260636	1.11	LAST BH SURFACE MWD SURVEY OWB
1902.00	14.460	189.120	1872.43	-253.92	-254.46	-18.86	3188489.93	1284617.82	40.1127022	-104.8260705	1.71	FIRST BH PRODUCTION MWD SURVEY OWB
1990.00	17.760	182.540	1956.97	-278.12	-278.72	-21.20	3188487.59	1284593.56	40.1126357	-104.8260796	4.28	
2080.00	18.570	182.010	2042.49	-306.12	-306.76	-22.31	3188486.48	1284565.52	40.1125587	-104.8260843	0.92	
2169.00	19.360	182.230	2126.66	-334.99	-335.66	-23.38	3188485.41	1284536.62	40.1124794	-104.8260889	0.89	
2259.00	20.190	182.520	2211.35	-365.38	-366.09	-24.64	3188484.14	1284506.20	40.1123959	-104.8260942	0.93	
2349.00	21.540	181.990	2295.44	-397.36	-398.12	-25.90	3188482.89	1284474.17	40.1123080	-104.8260996	1.51	
2438.00	23.310	182.460	2377.71	-431.25	-432.04	-27.22	3188481.56	1284440.25	40.1122149	-104.8261053	2.00	
2527.00	24.100	182.350	2459.20	-466.95	-467.79	-28.72	3188480.06	1284404.50	40.1121168	-104.8261116	0.89	
2617.00	25.780	181.640	2540.81	-504.83	-505.71	-30.04	3188478.75	1284366.58	40.1120128	-104.8261173	1.90	
2706.00	27.510	181.880	2620.35	-544.68	-545.61	-31.27	3188477.52	1284326.69	40.1119033	-104.8261228	1.95	
2796.00	29.670	182.060	2699.37	-587.67	-588.65	-32.75	3188476.04	1284283.65	40.1117852	-104.8261293	2.40	
2885.00	31.910	185.860	2775.83	-633.00	-634.07	-35.94	3188472.85	1284238.23	40.1116606	-104.8261419	3.33	
2975.00	34.860	180.830	2850.99	-682.32	-683.47	-38.75	3188470.04	1284188.83	40.1115250	-104.8261533	4.49	
3064.00	35.960	178.610	2923.53	-733.87	-735.03	-38.48	3188470.31	1284137.27	40.1113835	-104.8261537	1.90	
3154.00	37.860	178.380	2995.48	-787.92	-789.06	-37.06	3188471.73	1284083.24	40.1112351	-104.8261501	2.12	
3243.00	39.860	178.670	3064.78	-843.76	-844.88	-35.62	3188473.16	1284027.43	40.1110819	-104.8261465	2.26	
3333.00	42.150	178.440	3132.70	-902.80	-903.91	-34.13	3188474.66	1283968.40	40.1109198	-104.8261428	2.55	
3422.00	44.050	178.200	3197.68	-963.61	-964.69	-32.35	3188476.44	1283907.62	40.1107530	-104.8261381	2.14	
3511.00	44.910	178.000	3261.18	-1025.97	-1027.01	-30.28	3188478.51	1283845.30	40.1105818	-104.8261324	0.98	
3601.00	44.650	178.080	3325.06	-1089.36	-1090.37	-28.11	3188480.68	1283781.95	40.1104079	-104.8261263	0.30	
3691.00	45.130	177.910	3388.82	-1152.87	-1153.85	-25.89	3188482.90	1283718.47	40.1102336	-104.8261201	0.55	
3780.00	45.190	178.270	3451.58	-1215.98	-1216.92	-23.78	3188485.00	1283655.40	40.1100604	-104.8261143	0.29	
3870.00	44.810	178.530	3515.22	-1279.62	-1280.54	-22.01	3188486.78	1283591.79	40.1098857	-104.8261097	0.47	



Planned Wellpath Report

LG EVERIST 06 ST01 PWP Rev-B.0

Page 3 of 8



REFERENCE WELLPATH IDENTIFICATION

Operator	PETRO OPERATING CO, LLC	Well	LG EVERIST 06
Field	WELD COUNTY (NAD83/GRID)	API	0512352229
Facility	SEC.30-T02N-R66W	Wellbore	LG EVERIST 06 ST01 PWB
Slot	SLOT#06 LG EVERIST 06 (1079'FNL & 1127'FWL,SEC.30)	Sidetrack from	LG EVERIST 06 AWP at 4496.00 MD

WELLPATH DATA (212 stations) † = interpolated, ‡ = extrapolated station

MD [ft]	Inclination [°]	Azimuth [°]	TVD [ft]	Vert Sect [ft]	North [ft]	East [ft]	Grid East [US ft]	Grid North [US ft]	Latitude	Longitude	DLS [°/100ft]	Comments
3959.00	45.070	178.280	3578.22	-1342.48	-1343.38	-20.26	3188488.53	1283528.95	40.1097132	-104.8261051	0.35	
4049.00	44.850	178.190	3641.90	-1406.08	-1406.94	-18.30	3188490.49	1283465.39	40.1095387	-104.8260998	0.25	
4138.00	44.950	178.900	3704.95	-1468.90	-1469.74	-16.70	3188492.08	1283402.59	40.1093663	-104.8260958	0.57	
4228.00	44.380	179.410	3768.96	-1532.16	-1533.00	-15.77	3188493.02	1283339.33	40.1091926	-104.8260942	0.75	
4317.00	45.290	178.960	3832.07	-1594.91	-1595.75	-14.87	3188493.91	1283276.59	40.1090204	-104.8260927	1.08	
4407.00	44.230	179.490	3895.97	-1658.27	-1659.11	-14.02	3188494.77	1283213.23	40.1088464	-104.8260914	1.25	
4496.00	45.190	179.330	3959.22	-1720.88	-1721.72	-13.37	3188495.42	1283150.62	40.1086745	-104.8260908	1.09	Tie On
4560.00	45.190	179.330	4004.33	-1766.28	-1767.12	-12.84	3188495.95	1283105.22	40.1085499	-104.8260901	0.00	ST Point/ TOC
4596.00†	44.112	179.241	4029.94	-1791.58	-1792.42	-12.52	3188496.26	1283079.92	40.1084804	-104.8260897	3.00	
4666.52	42.000	179.055	4081.46	-1839.72	-1840.56	-11.81	3188496.98	1283031.79	40.1083483	-104.8260884	3.00	End of 3D Arc (J)
4696.00†	42.000	179.055	4103.37	-1859.44	-1860.28	-11.48	3188497.30	1283012.07	40.1082942	-104.8260878	0.00	
4796.00†	42.000	179.055	4177.69	-1926.36	-1927.18	-10.38	3188498.41	1282945.17	40.1081105	-104.8260857	0.00	
4896.00†	42.000	179.055	4252.00	-1993.27	-1994.09	-9.28	3188499.51	1282878.27	40.1079268	-104.8260835	0.00	
4996.00†	42.000	179.055	4326.31	-2060.18	-2060.99	-8.17	3188500.62	1282811.36	40.1077431	-104.8260814	0.00	
5080.00	42.000	179.055	4388.74	-2116.38	-2117.19	-7.25	3188501.54	1282755.17	40.1075889	-104.8260796	0.00	End of Tangent (J)
5096.00†	42.320	179.055	4400.60	-2127.12	-2127.93	-7.07	3188501.72	1282744.43	40.1075594	-104.8260793	2.00	
5196.00†	44.320	179.055	4473.35	-2195.72	-2196.52	-5.94	3188502.85	1282675.84	40.1073711	-104.8260771	2.00	
5271.63	45.833	179.055	4526.75	-2249.27	-2250.06	-5.05	3188503.73	1282622.30	40.1072241	-104.8260754	2.00	3D Arc (J)
5296.00†	45.833	179.055	4543.73	-2266.75	-2267.54	-4.77	3188504.02	1282604.82	40.1071761	-104.8260748	0.00	
5396.00†	45.833	179.055	4613.41	-2338.48	-2339.26	-3.58	3188505.20	1282533.10	40.1069792	-104.8260726	0.00	
5496.00†	45.833	179.055	4683.09	-2410.21	-2410.98	-2.40	3188506.39	1282461.39	40.1067823	-104.8260703	0.00	
5596.00†	45.833	179.055	4752.76	-2481.93	-2482.71	-1.22	3188507.57	1282389.67	40.1065854	-104.8260680	0.00	
5696.00†	45.833	179.055	4822.44	-2553.66	-2554.43	-0.03	3188508.75	1282317.95	40.1063885	-104.8260657	0.00	
5796.00†	45.833	179.055	4892.11	-2625.39	-2626.15	1.15	3188509.94	1282246.23	40.1061916	-104.8260634	0.00	
5896.00†	45.833	179.055	4961.79	-2697.12	-2697.87	2.33	3188511.12	1282174.51	40.1059947	-104.8260612	0.00	
5996.00†	45.833	179.055	5031.47	-2768.85	-2769.59	3.52	3188512.30	1282102.80	40.1057978	-104.8260589	0.00	
6096.00†	45.833	179.055	5101.14	-2840.58	-2841.31	4.70	3188513.49	1282031.08	40.1056009	-104.8260566	0.00	
6196.00†	45.833	179.055	5170.82	-2912.31	-2913.03	5.88	3188514.67	1281959.36	40.1054040	-104.8260543	0.00	
6296.00†	45.833	179.055	5240.49	-2984.03	-2984.75	7.06	3188515.85	1281887.64	40.1052071	-104.8260520	0.00	
6396.00†	45.833	179.055	5310.17	-3055.76	-3056.47	8.25	3188517.03	1281815.93	40.1050102	-104.8260498	0.00	
6496.00†	45.833	179.055	5379.84	-3127.49	-3128.19	9.43	3188518.22	1281744.21	40.1048133	-104.8260475	0.00	
6596.00†	45.833	179.055	5449.52	-3199.22	-3199.91	10.61	3188519.40	1281672.49	40.1046165	-104.8260452	0.00	
6696.00†	45.833	179.055	5519.20	-3270.95	-3271.64	11.80	3188520.58	1281600.77	40.1044196	-104.8260429	0.00	
6796.00†	45.833	179.055	5588.87	-3342.68	-3343.36	12.98	3188521.77	1281529.05	40.1042227	-104.8260406	0.00	
6896.00†	45.833	179.055	5658.55	-3414.40	-3415.08	14.16	3188522.95	1281457.34	40.1040258	-104.8260384	0.00	
6996.00†	45.833	179.055	5728.22	-3486.13	-3486.80	15.35	3188524.13	1281385.62	40.1038289	-104.8260361	0.00	
7096.00†	45.833	179.055	5797.90	-3557.86	-3558.52	16.53	3188525.31	1281313.90	40.1036320	-104.8260338	0.00	
7196.00†	45.833	179.055	5867.57	-3629.59	-3630.24	17.71	3188526.50	1281242.18	40.1034351	-104.8260315	0.00	
7296.00†	45.833	179.055	5937.25	-3701.32	-3701.96	18.89	3188527.68	1281170.46	40.1032382	-104.8260292	0.00	
7396.00†	45.833	179.055	6006.93	-3773.05	-3773.68	20.08	3188528.86	1281098.75	40.1030413	-104.8260270	0.00	
7496.00†	45.833	179.055	6076.60	-3844.77	-3845.40	21.26	3188530.05	1281027.03	40.1028444	-104.8260247	0.00	
7596.00†	45.833	179.055	6146.28	-3916.50	-3917.12	22.44	3188531.23	1280955.31	40.1026475	-104.8260224	0.00	
7696.00†	45.833	179.055	6215.95	-3988.23	-3988.84	23.63	3188532.41	1280883.59	40.1024506	-104.8260201	0.00	
7796.00†	45.833	179.055	6285.63	-4059.96	-4060.57	24.81	3188533.60	1280811.88	40.1022537	-104.8260178	0.00	
7896.00†	45.833	179.055	6355.30	-4131.69	-4132.29	25.99	3188534.78	1280740.16	40.1020568	-104.8260156	0.00	



Planned Wellpath Report

LG EVERIST 06 ST01 PWP Rev-B.0

Page 4 of 8



REFERENCE WELLPATH IDENTIFICATION

Operator	PETRO OPERATING CO, LLC	Well	LG EVERIST 06
Field	WELD COUNTY (NAD83/GRID)	API	0512352229
Facility	SEC.30-T02N-R66W	Wellbore	LG EVERIST 06 ST01 PWB
Slot	SLOT#06 LG EVERIST 06 (1079'FNL & 1127'FWL,SEC.30)	Sidetrack from	LG EVERIST 06 AWP at 4496.00 MD

WELLPATH DATA (212 stations) † = interpolated, ‡ = extrapolated station

MD [ft]	Inclination [°]	Azimuth [°]	TVD [ft]	Vert Sect [ft]	North [ft]	East [ft]	Grid East [US ft]	Grid North [US ft]	Latitude	Longitude	DLS [°/100ft]	Comments
7919.80	45.833	179.055	6371.89	-4148.76	-4149.36	26.27	3188535.06	1280723.09	40.1020099	-104.8260150	0.00	KOP
7996.00†	38.336	181.094	6428.40	-4199.77	-4200.38	26.27	3188535.06	1280672.06	40.1018699	-104.8260164	10.00	
8096.00†	28.578	185.102	6511.74	-4254.66	-4255.36	23.55	3188532.33	1280617.09	40.1017190	-104.8260276	10.00	
8196.00†	19.045	192.736	6603.15	-4294.35	-4295.19	17.81	3188526.59	1280577.26	40.1016098	-104.8260492	10.00	
8296.00†	10.380	213.388	6699.84	-4317.63	-4318.69	9.23	3188518.02	1280553.76	40.1015455	-104.8260805	10.00	
8396.00†	7.198	280.099	6798.87	-4323.79	-4325.13	-1.92	3188506.87	1280547.32	40.1015280	-104.8261206	10.00	
8496.00†	13.961	323.411	6897.25	-4312.66	-4314.32	-15.31	3188493.47	1280558.13	40.1015580	-104.8261682	10.00	
8596.00†	23.174	336.027	6991.98	-4284.56	-4286.58	-30.54	3188478.25	1280585.87	40.1016344	-104.8262218	10.00	
8696.00†	32.835	341.604	7080.18	-4240.35	-4242.77	-47.13	3188461.66	1280629.68	40.1017551	-104.8262799	10.00	
8796.00†	42.640	344.840	7159.18	-4181.38	-4184.20	-64.59	3188444.20	1280688.24	40.1019162	-104.8263408	10.00	
8896.00†	52.507	347.052	7226.56	-4109.43	-4112.67	-82.38	3188426.41	1280759.78	40.1021129	-104.8264024	10.00	
8996.00†	62.406	348.741	7280.29	-4026.69	-4030.34	-99.96	3188408.83	1280842.10	40.1023393	-104.8264630	10.00	
9096.00†	72.321	350.149	7318.74	-3935.68	-3939.71	-116.81	3188391.98	1280932.73	40.1025884	-104.8265208	10.00	
9196.00†	82.246	351.407	7340.72	-3839.16	-3843.54	-132.40	3188376.39	1281028.89	40.1028527	-104.8265739	10.00	
9274.11	90.000	352.346	7346.00†	-3761.83	-3766.46	-143.40	3188365.39	1281105.97	40.1030645	-104.8266111	10.00	LANDING
9296.00†	90.000	352.346	7346.00	-3740.07	-3744.76	-146.32	3188362.48	1281127.67	40.1031242	-104.8266210	0.00	
9396.00†	90.000	352.346	7346.00	-3640.66	-3645.65	-159.64	3188349.16	1281226.77	40.1033965	-104.8266659	0.00	
9496.00†	90.000	352.346	7346.00	-3541.26	-3546.54	-172.96	3188335.84	1281325.88	40.1036688	-104.8267108	0.00	
9511.34	90.000	352.346	7346.00	-3526.01	-3531.34	-175.00	3188333.79	1281341.08	40.1037106	-104.8267177	0.00	LAT TARGET1
9596.00†	90.094	354.036	7345.93	-3441.73	-3447.28	-185.04	3188323.76	1281425.14	40.1039415	-104.8267513	2.00	
9696.00†	90.205	356.033	7345.67	-3341.93	-3347.66	-193.69	3188315.10	1281524.75	40.1042152	-104.8267795	2.00	
9796.00†	90.316	358.030	7345.21	-3241.97	-3247.80	-198.87	3188309.93	1281624.61	40.1044894	-104.8267953	2.00	
9896.00†	90.427	0.027	7344.57	-3141.98	-3147.82	-200.56	3188308.23	1281724.58	40.1047639	-104.8267987	2.00	
9913.40	90.446	0.375	7344.43	-3124.59	-3130.42	-200.50	3188308.29	1281741.98	40.1048116	-104.8267980	2.00	3D Arc (J)
9996.00†	90.446	0.375	7343.79	-3042.03	-3047.82	-199.96	3188308.83	1281824.57	40.1050383	-104.8267938	0.00	
10096.00†	90.446	0.375	7343.01	-2942.08	-2947.83	-199.31	3188309.49	1281924.56	40.1053128	-104.8267888	0.00	
10196.00†	90.446	0.375	7342.23	-2842.13	-2847.83	-198.66	3188310.14	1282024.55	40.1055873	-104.8267837	0.00	
10296.00†	90.446	0.375	7341.45	-2742.18	-2747.84	-198.00	3188310.79	1282124.55	40.1058617	-104.8267787	0.00	
10396.00†	90.446	0.375	7340.68	-2642.23	-2647.84	-197.35	3188311.45	1282224.54	40.1061362	-104.8267736	0.00	
10496.00†	90.446	0.375	7339.90	-2542.28	-2547.85	-196.69	3188312.10	1282324.53	40.1064107	-104.8267686	0.00	
10596.00†	90.446	0.375	7339.12	-2442.33	-2447.86	-196.04	3188312.76	1282424.52	40.1066851	-104.8267635	0.00	
10696.00†	90.446	0.375	7338.34	-2342.39	-2347.86	-195.39	3188313.41	1282524.51	40.1069596	-104.8267585	0.00	
10796.00†	90.446	0.375	7337.56	-2242.44	-2247.87	-194.73	3188314.06	1282624.50	40.1072341	-104.8267534	0.00	
10896.00†	90.446	0.375	7336.78	-2142.49	-2147.87	-194.08	3188314.72	1282724.49	40.1075085	-104.8267484	0.00	
10996.00†	90.446	0.375	7336.01	-2042.54	-2047.88	-193.42	3188315.37	1282824.48	40.1077830	-104.8267433	0.00	
11096.00†	90.446	0.375	7335.23	-1942.59	-1947.88	-192.77	3188316.02	1282924.47	40.1080575	-104.8267383	0.00	
11196.00†	90.446	0.375	7334.45	-1842.64	-1847.89	-192.12	3188316.68	1283024.46	40.1083319	-104.8267332	0.00	
11296.00†	90.446	0.375	7333.67	-1742.69	-1747.89	-191.46	3188317.33	1283124.45	40.1086064	-104.8267282	0.00	
11396.00†	90.446	0.375	7332.89	-1642.74	-1647.90	-190.81	3188317.99	1283224.44	40.1088809	-104.8267231	0.00	
11496.00†	90.446	0.375	7332.11	-1542.79	-1547.90	-190.16	3188318.64	1283324.43	40.1091553	-104.8267181	0.00	
11596.00†	90.446	0.375	7331.34	-1442.84	-1447.91	-189.50	3188319.29	1283424.42	40.1094298	-104.8267130	0.00	
11696.00†	90.446	0.375	7330.56	-1342.90	-1347.91	-188.85	3188319.95	1283524.41	40.1097043	-104.8267079	0.00	
11796.00†	90.446	0.375	7329.78	-1242.95	-1247.92	-188.19	3188320.60	1283624.40	40.1099788	-104.8267029	0.00	
11896.00†	90.446	0.375	7329.00	-1143.00	-1147.92	-187.54	3188321.26	1283724.40	40.1102532	-104.8266978	0.00	
11996.00†	90.446	0.375	7328.22	-1043.05	-1047.93	-186.89	3188321.91	1283824.39	40.1105277	-104.8266928	0.00	



Planned Wellpath Report

LG EVERIST 06 ST01 PWP Rev-B.0

Page 5 of 8



REFERENCE WELLPATH IDENTIFICATION

Operator	PETRO OPERATING CO, LLC	Well	LG EVERIST 06
Field	WELD COUNTY (NAD83/GRID)	API	0512352229
Facility	SEC.30-T02N-R66W	Wellbore	LG EVERIST 06 ST01 PWB
Slot	SLOT#06 LG EVERIST 06 (1079'FNL & 1127'FWL,SEC.30)	Sidetrack from	LG EVERIST 06 AWP at 4496.00 MD

WELLPATH DATA (212 stations) † = interpolated, ‡ = extrapolated station

MD [ft]	Inclination [°]	Azimuth [°]	TVD [ft]	Vert Sect [ft]	North [ft]	East [ft]	Grid East [US ft]	Grid North [US ft]	Latitude	Longitude	DLS [°/100ft]	Comments
12096.00†	90.446	0.375	7327.44	-943.10	-947.93	-186.23	3188322.56	1283924.38	40.1108022	-104.8266877	0.00	
12196.00†	90.446	0.375	7326.66	-843.15	-847.94	-185.58	3188323.22	1284024.37	40.1110766	-104.8266827	0.00	
12296.00†	90.446	0.375	7325.89	-743.20	-747.94	-184.92	3188323.87	1284124.36	40.1113511	-104.8266776	0.00	
12396.00†	90.446	0.375	7325.11	-643.25	-647.95	-184.27	3188324.52	1284224.35	40.1116256	-104.8266726	0.00	
12496.00†	90.446	0.375	7324.33	-543.30	-547.95	-183.62	3188325.18	1284324.34	40.1119000	-104.8266675	0.00	
12596.00†	90.446	0.375	7323.55	-443.35	-447.96	-182.96	3188325.83	1284424.33	40.1121745	-104.8266625	0.00	
12696.00†	90.446	0.375	7322.77	-343.41	-347.96	-182.31	3188326.49	1284524.32	40.1124490	-104.8266574	0.00	
12796.00†	90.446	0.375	7321.99	-243.46	-247.97	-181.66	3188327.14	1284624.31	40.1127234	-104.8266524	0.00	
12896.00†	90.446	0.375	7321.22	-143.51	-147.97	-181.00	3188327.79	1284724.30	40.1129979	-104.8266473	0.00	
12923.78	90.446	0.375	7321.00	-115.75	-120.20	-180.82	3188327.98	1284752.07	40.1130741	-104.8266459	0.00	WP1
12954.09	90.650	359.804	7320.71	-85.45	-89.89	-180.77	3188328.02	1284782.38	40.1131573	-104.8266449	2.00	3D Arc (J)
12996.00†	90.650	359.804	7320.23	-43.55	-47.98	-180.92	3188327.88	1284824.29	40.1132724	-104.8266443	0.00	
13096.00†	90.650	359.804	7319.10	56.43	52.01	-181.26	3188327.54	1284924.28	40.1135469	-104.8266428	0.00	
13196.00†	90.650	359.804	7317.97	156.40	152.01	-181.60	3188327.19	1285024.27	40.1138213	-104.8266413	0.00	
13296.00†	90.650	359.804	7316.83	256.37	252.00	-181.94	3188326.85	1285124.26	40.1140958	-104.8266398	0.00	
13396.00†	90.650	359.804	7315.70	356.34	351.99	-182.29	3188326.51	1285224.25	40.1143703	-104.8266383	0.00	
13496.00†	90.650	359.804	7314.56	456.31	451.98	-182.63	3188326.17	1285324.23	40.1146448	-104.8266369	0.00	
13596.00†	90.650	359.804	7313.43	556.28	551.98	-182.97	3188325.82	1285424.22	40.1149193	-104.8266354	0.00	
13696.00†	90.650	359.804	7312.29	656.26	651.97	-183.31	3188325.48	1285524.21	40.1151938	-104.8266339	0.00	
13796.00†	90.650	359.804	7311.16	756.23	751.96	-183.66	3188325.14	1285624.20	40.1154682	-104.8266324	0.00	
13896.00†	90.650	359.804	7310.02	856.20	851.96	-184.00	3188324.80	1285724.19	40.1157427	-104.8266309	0.00	
13996.00†	90.650	359.804	7308.89	956.17	951.95	-184.34	3188324.45	1285824.18	40.1160172	-104.8266294	0.00	
14096.00†	90.650	359.804	7307.75	1056.14	1051.94	-184.68	3188324.11	1285924.17	40.1162917	-104.8266279	0.00	
14196.00†	90.650	359.804	7306.62	1156.11	1151.94	-185.03	3188323.77	1286024.16	40.1165662	-104.8266264	0.00	
14296.00†	90.650	359.804	7305.49	1256.08	1251.93	-185.37	3188323.43	1286124.14	40.1168407	-104.8266249	0.00	
14396.00†	90.650	359.804	7304.35	1356.06	1351.92	-185.71	3188323.08	1286224.13	40.1171151	-104.8266234	0.00	
14496.00†	90.650	359.804	7303.22	1456.03	1451.91	-186.05	3188322.74	1286324.12	40.1173896	-104.8266219	0.00	
14596.00†	90.650	359.804	7302.08	1556.00	1551.91	-186.40	3188322.40	1286424.11	40.1176641	-104.8266205	0.00	
14696.00†	90.650	359.804	7300.95	1655.97	1651.90	-186.74	3188322.06	1286524.10	40.1179386	-104.8266190	0.00	
14796.00†	90.650	359.804	7299.81	1755.94	1751.89	-187.08	3188321.71	1286624.09	40.1182131	-104.8266175	0.00	
14896.00†	90.650	359.804	7298.68	1855.91	1851.89	-187.42	3188321.37	1286724.08	40.1184876	-104.8266160	0.00	
14996.00†	90.650	359.804	7297.54	1955.88	1951.88	-187.77	3188321.03	1286824.07	40.1187620	-104.8266145	0.00	
15043.86	90.650	359.804	7297.00	2003.73	1999.74	-187.93	3188320.87	1286871.92	40.1188934	-104.8266138	0.00	WP2
15069.91	90.131	359.762	7296.82	2029.78	2025.79	-188.03	3188320.77	1286897.97	40.1189649	-104.8266134	2.00	3D Arc (J)
15096.00†	90.131	359.762	7296.76	2055.86	2051.87	-188.14	3188320.66	1286924.06	40.1190365	-104.8266131	0.00	
15196.00†	90.131	359.762	7296.53	2155.84	2151.87	-188.55	3188320.24	1287024.05	40.1193110	-104.8266119	0.00	
15296.00†	90.131	359.762	7296.31	2255.82	2251.87	-188.97	3188319.83	1287124.05	40.1195855	-104.8266106	0.00	
15396.00†	90.131	359.762	7296.08	2355.80	2351.87	-189.38	3188319.41	1287224.04	40.1198600	-104.8266094	0.00	
15496.00†	90.131	359.762	7295.85	2455.78	2451.87	-189.80	3188319.00	1287324.04	40.1201345	-104.8266082	0.00	
15544.13	90.131	359.762	7295.74	2503.90	2500.00	-190.00	3188318.80	1287372.16	40.1202667	-104.8266076	0.00	LAT TARGET2
15596.00†	90.131	0.799	7295.62	2555.74	2551.87	-189.75	3188319.05	1287424.03	40.1204090	-104.8266053	2.00	
15596.96	90.131	0.818	7295.62	2556.70	2552.83	-189.73	3188319.06	1287424.99	40.1204117	-104.8266052	2.00	3D Arc (J)
15696.00†	90.131	0.818	7295.39	2655.67	2651.86	-188.32	3188320.48	1287524.01	40.1206835	-104.8265975	0.00	
15796.00†	90.131	0.818	7295.16	2755.59	2751.85	-186.89	3188321.91	1287624.00	40.1209579	-104.8265896	0.00	
15896.00†	90.131	0.818	7294.94	2855.52	2851.84	-185.46	3188323.33	1287723.99	40.1212323	-104.8265818	0.00	



Planned Wellpath Report

LG EVERIST 06 ST01 PWP Rev-B.0

Page 6 of 8



REFERENCE WELLPATH IDENTIFICATION

Operator	PETRO OPERATING CO, LLC	Well	LG EVERIST 06
Field	WELD COUNTY (NAD83/GRID)	API	0512352229
Facility	SEC.30-T02N-R66W	Wellbore	LG EVERIST 06 ST01 PWB
Slot	SLOT#06 LG EVERIST 06 (1079'FNL & 1127'FWL,SEC.30)	Sidetrack from	LG EVERIST 06 AWP at 4496.00 MD

WELLPATH DATA (212 stations) † = interpolated, ‡ = extrapolated station

MD [ft]	Inclination [°]	Azimuth [°]	TVD [ft]	Vert Sect [ft]	North [ft]	East [ft]	Grid East [US ft]	Grid North [US ft]	Latitude	Longitude	DLS [°/100ft]	Comments
15996.00†	90.131	0.818	7294.71	2955.44	2951.83	-184.03	3188324.76	1287823.97	40.1215068	-104.8265740	0.00	
16096.00†	90.131	0.818	7294.48	3055.37	3051.82	-182.60	3188326.19	1287923.96	40.1217812	-104.8265662	0.00	
16196.00†	90.131	0.818	7294.25	3155.29	3151.81	-181.18	3188327.62	1288023.94	40.1220556	-104.8265583	0.00	
16296.00†	90.131	0.818	7294.02	3255.22	3251.80	-179.75	3188329.05	1288123.93	40.1223301	-104.8265505	0.00	
16396.00†	90.131	0.818	7293.79	3355.14	3351.78	-178.32	3188330.48	1288223.91	40.1226045	-104.8265427	0.00	
16496.00†	90.131	0.818	7293.57	3455.07	3451.77	-176.89	3188331.90	1288323.90	40.1228790	-104.8265349	0.00	
16596.00†	90.131	0.818	7293.34	3554.99	3551.76	-175.46	3188333.33	1288423.88	40.1231534	-104.8265271	0.00	
16696.00†	90.131	0.818	7293.11	3654.92	3651.75	-174.03	3188334.76	1288523.87	40.1234278	-104.8265192	0.00	
16743.85	90.131	0.818	7293.00	3702.73	3699.60	-173.35	3188335.44	1288571.71	40.1235592	-104.8265155	0.00	WP3
16750.67	90.267	0.812	7292.98	3709.54	3706.41	-173.25	3188335.54	1288578.53	40.1235779	-104.8265150	2.00	3D Arc (J)
16796.00†	90.267	0.812	7292.77	3754.84	3751.74	-172.61	3188336.18	1288623.85	40.1237023	-104.8265114	0.00	
16896.00†	90.267	0.812	7292.30	3854.76	3851.73	-171.19	3188337.60	1288723.84	40.1239767	-104.8265036	0.00	
16996.00†	90.267	0.812	7291.83	3954.69	3951.72	-169.77	3188339.02	1288823.82	40.1242511	-104.8264959	0.00	
17096.00†	90.267	0.812	7291.37	4054.61	4051.71	-168.36	3188340.44	1288923.81	40.1245256	-104.8264881	0.00	
17196.00†	90.267	0.812	7290.90	4154.54	4151.70	-166.94	3188341.86	1289023.79	40.1248000	-104.8264803	0.00	
17296.00†	90.267	0.812	7290.43	4254.46	4251.69	-165.52	3188343.27	1289123.78	40.1250744	-104.8264725	0.00	
17396.00†	90.267	0.812	7289.97	4354.39	4351.68	-164.10	3188344.69	1289223.76	40.1253489	-104.8264647	0.00	
17496.00†	90.267	0.812	7289.50	4454.31	4451.66	-162.68	3188346.11	1289323.75	40.1256233	-104.8264569	0.00	
17596.00†	90.267	0.812	7289.04	4554.23	4551.65	-161.27	3188347.53	1289423.73	40.1258977	-104.8264491	0.00	
17696.00†	90.267	0.812	7288.57	4654.16	4651.64	-159.85	3188348.95	1289523.71	40.1261722	-104.8264414	0.00	
17796.00†	90.267	0.812	7288.10	4754.08	4751.63	-158.43	3188350.36	1289623.70	40.1264466	-104.8264336	0.00	
17896.00†	90.267	0.812	7287.64	4854.01	4851.62	-157.01	3188351.78	1289723.68	40.1267211	-104.8264258	0.00	
17996.00†	90.267	0.812	7287.17	4953.93	4951.61	-155.59	3188353.20	1289823.67	40.1269955	-104.8264180	0.00	
18096.00†	90.267	0.812	7286.71	5053.86	5051.60	-154.18	3188354.62	1289923.65	40.1272699	-104.8264102	0.00	
18196.00†	90.267	0.812	7286.24	5153.78	5151.59	-152.76	3188356.03	1290023.64	40.1275444	-104.8264024	0.00	
18296.00†	90.267	0.812	7285.77	5253.71	5251.58	-151.34	3188357.45	1290123.62	40.1278188	-104.8263946	0.00	
18396.00†	90.267	0.812	7285.31	5353.63	5351.56	-149.92	3188358.87	1290223.61	40.1280932	-104.8263869	0.00	
18496.00†	90.267	0.812	7284.84	5453.55	5451.55	-148.51	3188360.29	1290323.59	40.1283677	-104.8263791	0.00	
18596.00†	90.267	0.812	7284.38	5553.48	5551.54	-147.09	3188361.71	1290423.58	40.1286421	-104.8263713	0.00	
18696.00†	90.267	0.812	7283.91	5653.40	5651.53	-145.67	3188363.12	1290523.56	40.1289165	-104.8263635	0.00	
18796.00†	90.267	0.812	7283.44	5753.33	5751.52	-144.25	3188364.54	1290623.55	40.1291910	-104.8263557	0.00	
18891.36	90.267	0.812	7283.00‡	5848.61	5846.87	-142.90	3188365.89	1290718.89	40.1294527	-104.8263483	0.00	TD



Planned Wellpath Report

LG EVERIST 06 ST01 PWP Rev-B.0

Page 7 of 8



REFERENCE WELLPATH IDENTIFICATION

Operator	PETRO OPERATING CO, LLC	Well	LG EVERIST 06
Field	WELD COUNTY (NAD83/GRID)	API	0512352229
Facility	SEC.30-T02N-R66W	Wellbore	LG EVERIST 06 ST01 PWB
Slot	SLOT#06 LG EVERIST 06 (1079'FNL & 1127'FWL,SEC.30)	Sidetrack from	LG EVERIST 06 AWP at 4496.00 MD

TARGETS

Name	MD [ft]	TVD [ft]	North [ft]	East [ft]	Grid East [US ft]	Grid North [US ft]	Latitude	Longitude	Shape
SEC.19-T02N-R66W	N/A	0.00	-65.26	37.02	3188545.81	1284807.01	40.1132204	-104.8258656	polygon
2D Polygon: dimensions not calculated									
SEC.19/30-T02N-R66W (SB 460')	N/A	0.00	-65.26	37.02	3188545.81	1284807.01	40.1132204	-104.8258656	polygon
2D Polygon: dimensions not calculated									
SEC.30-T02N-R66W	N/A	0.00	-65.26	37.02	3188545.81	1284807.01	40.1132204	-104.8258656	polygon
2D Polygon: dimensions not calculated									
LG EVERIST 06 BHL REV-2(464'FNL & 1000'FWL,SEC.19)	N/A	7283.00	5846.87	-142.90	3188365.89	1290718.89	40.1294527	-104.8263483	point
2) LG EVERIST 06 BHL REV-3(464'FNL & 1000'FWL,SEC.19)	18891.36	7283.00	5846.87	-142.90	3188365.89	1290718.89	40.1294527	-104.8263483	point
1) LG EVERIST 06 LP REV-3(454'FSL & 946'FWL,SEC.30)	9274.11	7346.00	-3766.46	-143.40	3188365.39	1281105.97	40.1030645	-104.8266111	point
LG EVERIST 06 LP REV-2(454'FSL & 946'FWL,SEC.30)	N/A	7358.00	-3766.46	-143.40	3188365.39	1281105.97	40.1030645	-104.8266111	point

SURVEY PROGRAM - Ref Wellbore: LG EVERIST 06 ST01 PWB Ref Wellpath: LG EVERIST 06 ST01 PWP Rev-B.0

Start MD [ft]	End MD [ft]	Positional Uncertainty Model	Log Name/Comment	Wellbore
23.50	141.00	BH MWD - Inclination Only (Standard)	BH MWD - Inclination Only 13-1/2" <141>	LG EVERIST 06 AWP
141.00	331.00	OWSG MWD rev2 + IFR1 + Sag + Multi-Station Correction	OWSG MWD rev2+IFR1+MS+SAG 13-1/2" <236 - 331, 599, 778 - 867, 1047 - 1842>	LG EVERIST 06 AWP
331.00	510.00	OWSG MWD rev2 + HRGM + Sag + Multi-Station Correction	OWSG MWD rev2+HRGM+MS+SAG 13-1/2" <421 - 510, 688, 957>	LG EVERIST 06 AWP
510.00	599.00	OWSG MWD rev2 + IFR1 + Sag + Multi-Station Correction	OWSG MWD rev2+IFR1+MS+SAG 13-1/2" <236 - 331, 599, 778 - 867, 1047 - 1842>	LG EVERIST 06 AWP
599.00	688.00	OWSG MWD rev2 + HRGM + Sag + Multi-Station Correction	OWSG MWD rev2+HRGM+MS+SAG 13-1/2" <421 - 510, 688, 957>	LG EVERIST 06 AWP
688.00	867.00	OWSG MWD rev2 + IFR1 + Sag + Multi-Station Correction	OWSG MWD rev2+IFR1+MS+SAG 13-1/2" <236 - 331, 599, 778 - 867, 1047 - 1842>	LG EVERIST 06 AWP
867.00	957.00	OWSG MWD rev2 + HRGM + Sag + Multi-Station Correction	OWSG MWD rev2+HRGM+MS+SAG 13-1/2" <421 - 510, 688, 957>	LG EVERIST 06 AWP
957.00	1842.00	OWSG MWD rev2 + IFR1 + Sag + Multi-Station Correction	OWSG MWD rev2+IFR1+MS+SAG 13-1/2" <236 - 331, 599, 778 - 867, 1047 - 1842>	LG EVERIST 06 AWP
1842.00	4496.00	OWSG MWD rev2 + IFR1 + Sag + Multi-Station Correction	OWSG MWD rev2+IFR1+MS+SAG 8-1/2" <1902 - 18874>	LG EVERIST 06 AWP
4496.00	18891.36	BH AutoTrak Curve/eXpress (2019) (IFR1, SAG, Short spacing)		LG EVERIST 06 ST01 PWB



Planned Wellpath Report

LG EVERIST 06 ST01 PWP Rev-B.0

Page 8 of 8



REFERENCE WELLPATH IDENTIFICATION

Operator	PETRO OPERATING CO, LLC	Well	LG EVERIST 06
Field	WELD COUNTY (NAD83/GRID)	API	0512352229
Facility	SEC.30-T02N-R66W	Wellbore	LG EVERIST 06 ST01 PWB
Slot	SLOT#06 LG EVERIST 06 (1079'FNL & 1127'FWL, SEC.30)	Sidetrack from	LG EVERIST 06 AWP at 4496.00 MD

WELLPATH COMMENTS

MD [ft]	Inclination [°]	Azimuth [°]	TVD [ft]	Comment
141.00	0.000	N/A	141.00	FIRST BH SURFACE MWD SURVEY OWB
1842.00	14.230	185.080	1814.30	LAST BH SURFACE MWD SURVEY OWB
1902.00	14.460	189.120	1872.43	FIRST BH PRODUCTION MWD SURVEY OWB

DESIGN COMMENTS

MD [ft]	Inclination [°]	Azimuth [°]	TVD [ft]	Comment
4496.00	45.190	179.330	3959.22	Tie On
4560.00	45.190	179.330	4004.33	ST Point/ TOC
4666.52	42.000	179.055	4081.46	End of 3D Arc (J)
5080.00	42.000	179.055	4388.74	End of Tangent (J)
5271.63	45.833	179.055	4526.75	3D Arc (J)
7919.80	45.833	179.055	6371.89	KOP
9274.11	90.000	352.346	7346.00	LANDING
9511.34	90.000	352.346	7346.00	LAT TARGET1
9913.40	90.446	0.375	7344.43	3D Arc (J)
12923.78	90.446	0.375	7321.00	WP1
12954.09	90.650	359.804	7320.71	3D Arc (J)
15043.86	90.650	359.804	7297.00	WP2
15069.91	90.131	359.762	7296.82	3D Arc (J)
15544.13	90.131	359.762	7295.74	LAT TARGET2
15596.96	90.131	0.818	7295.62	3D Arc (J)
16743.85	90.131	0.818	7293.00	WP3
16750.67	90.267	0.812	7292.98	3D Arc (J)
18891.36	90.267	0.812	7283.00	TD