



Terra Energy Partners, LLC

LONG STRING POST JOB REPORT

Leverich SR 524-13 05-045-24567
S:13 T:7S R:94W Garfield CO

CallSheet #: 87405
Proposal #: 69604



LONG STRING Post Job Report

Attention: Mr. Dustin Childers | (936) 524-8828 | dchilders@terraep.com
Terra Energy Partners, LLC
4828 Loop Central Dr., Suite 900 | Houston, TX 77081

Dear Mr. Dustin Childers,

Thank you for the opportunity to provide cementing services on this well. American Cementing strives to achieve complete customer satisfaction. If you have any questions regarding the services or data provided, please contact American Cementing at any time.

Sincerely,

Zen Keith

SME North | (307) 757-7178 | zen.keith@americacementing.com

Field Office 28730 US-6, Rifle, CO 81650
Phone: (970) 657-1187

Job Details & Summary

Geometry

Type	Function	OD (in)	ID (in)	Weight (lb/ft)	Thread	Top (ft)	Bottom (ft)	Excess (%)
Casing	Outer	9.625	8.921	36	n/a	0	1175	0
Open Hole	Outer	n/a	8.75	n/a	n/a	1175	7433	85
Open Hole	Outer	n/a	8.75	n/a	n/a	7433	10573	50
Casing	Inner	4.5	4	11.6	n/a	0	10583	0

Equipment / People

Unit Type	Unit	Power Unit	Employee #1
Cement Trailer Float	CTF-273	TRH-769	Kirchenwitz, Jacob
Field Storage Silo	FSS-470		
Field Storage Silo	FSS-438		
Cement Pump Float	CPF-012	TRH-677	Brady, Shawn
Light Duty Vehicles	LDV-061		Woronovitch, Collin

Timing

Event	Date/Time
Call Out	6/11/2023 20:00
Depart Facility	6/12/2023 00:00
On Location	6/12/2023 00:30
Rig Up Iron	6/12/2023 00:50
Job Started	6/12/2023 04:15
Job Completed	6/12/2023 06:37
Rig Down Iron	6/12/2023 06:50
Depart Location	6/12/2023 08:00

General Job Information

Metrics	Value
Well Fluid Density	9.4 lb/gal
Well Fluid Type	WBM
Rig Circulation Vol	723 bbls
Rig Circulation Time	1 hours
Calculated Displacement	163.3 bbls
Actual Displacement	163.3 bbls
Total Spacer to Surface	0 bbls
Total CMT to Surface	0 bbls
Well Topped Out	N/A

Job Details

Metrics	Value
Flare Prior to Job	No
Flare Prior to Job	0 units
Flare During Job	No
Flare During Job	0 units
Flare at End of Job	No
Flare at End of Job	0 units
Well Full Prior to Job	Yes
Well Fluid Density Into Well	9.4 lb/gal
Well Fluid Density Out of Well	9.4 lb/gal

Job Details (cont.)

Metrics	Value
BHCT	172 °F
BHST	229 °F

Water Analysis

Metrics	Value	Recommended
Water Source	Upright Rig Tank	
Temperature	65 °F	50-80 °F
pH Level	7	5.5-8.5
Chlorides	300 mg/L	0-3000 mg/L
Total Alkalinity	140	0-1000
Total Hardness	80 mg/L	0-500 mg/L
Carbonates	NA mg/L	0-100 mg/L
Sulfates	240 mg/L	0-1500 mg/L
Potassium	200 mg/L	0-3000 mg/L
Iron	0 mg/L	0-300 mg/L

Circulation

Lost Circulation Experienced

No

Job Execution Information

Fluid	Product	Function	Density (lb/gal)	Yield (ft ³ /sk)	Water Rq. (gal/sk)	Water Rq. (gal/bbl)	Volume (sks)	Volume (bbl)	Designed Top (ft)
1	Water	Flush	8.34			42.00		10.00	5653
2	Mud Flush	Flush	8.45			40.86		20.00	5752
3	Water	Flush	8.34			42.00		10.00	5950
4	Lead	Lead	12.50	2.21	12.30		357.00	140.39	6049
5	Tail	Tail	13.00	2.05	10.26		772.00	281.58	7433
6	Displacement	DisplacementFinal	8.34			42.00		163.00	0

Job Fluid Details

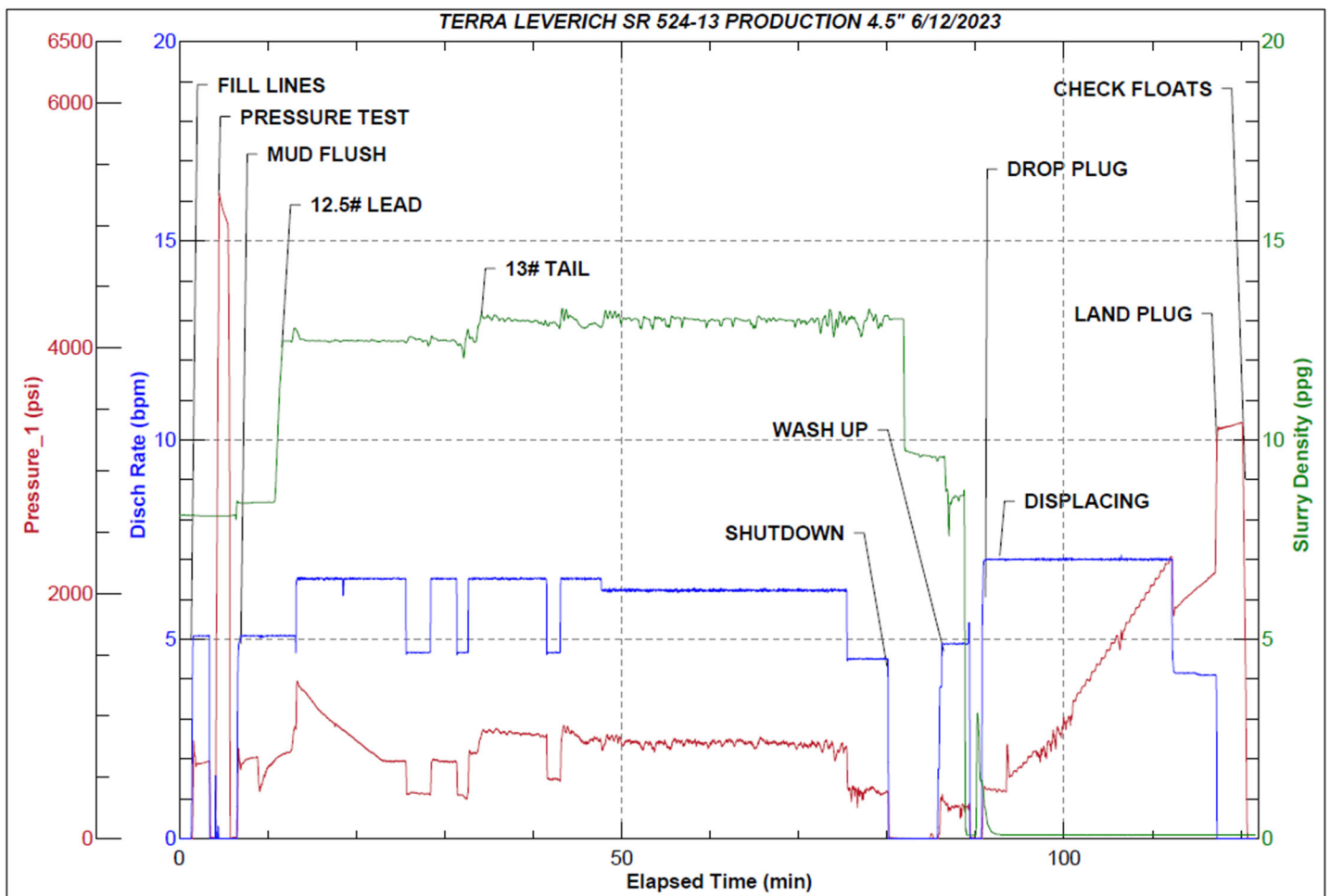
Fluid	Type	Fluid	Product	Function	Conc.	Uom
2	Flush	Mud Flush	SAPP	Surfactant	10.00	lb/bbl
2	Flush	Mud Flush	SS-201	Surfactant	0.50	gal/bbl
4	Lead	Lead	ASTM TYPE IL	Cement	100.00	%
4	Lead	Lead	A-2	Accelerator	0.20	%BWOB
4	Lead	Lead	FL-66	FluidLoss	0.30	%BWOB
4	Lead	Lead	FP-24	Defoamer	0.30	%BWOB
4	Lead	Lead	GW-86	Viscosifier	0.10	%BWOB
4	Lead	Lead	R-3	Retarder	0.50	%BWOB
4	Lead	Lead	R-7C	Retarder	0.10	%BWOB
4	Lead	Lead	STATIC FREE	Other	0.01	lb/sk
4	Lead	Lead	XCem-1009	Extender	10.00	lb/sk
5	Tail	Tail	CLASS G	Cement	50.00	%
5	Tail	Tail	FLY ASH (POZZOLAN)	Extender	50.00	%
5	Tail	Tail	BENTONITE	Viscosifier	6.00	%BWOB
5	Tail	Tail	FL-66	FluidLoss	0.40	%BWOB
5	Tail	Tail	FP-24	Defoamer	0.30	%BWOB
5	Tail	Tail	GW-86	Viscosifier	0.10	%BWOB
5	Tail	Tail	IntegraSeal PHENO	LostCirculation	0.50	lb/sk
5	Tail	Tail	IntegraSeal POLI	LostCirculation	0.25	lb/sk
5	Tail	Tail	S-8	StrengthRetrogression	20.00	%BWOB
5	Tail	Tail	XCem-1009	Extender	6.00	lb/sk
5	Tail	Tail	XCem-916	Retarder	0.40	%BWOB

Job Logs

Line	Event	Date (MM/DD/YY)	Time (HH:MM)	Density (lb/gal)	Pump Rate (bpm)	Pump Volume (bbls)	Pipe Pressure (psi)	Comment
1	Callout	6/11/2023	20:00					CREW CALLED OUT FOR ON LOCATION TIME OF 1:30 6/12
2	Depart Location	6/12/2023	00:00					CREW DEPARTS RCO YARD FOR RIG LOCATION
3	Arrive On Location	6/12/2023	12:30					CREW AND EQUIPMENT ARRIVES ON LOCATION. RIG STILL RUNNING CASING
4	Safety Meeting	6/12/2023	12:45					PRE RIG UP SAFETY MEETING
5	Rig Up Iron	6/12/2023	12:50					RIG UP IRON HOSES AND EQUIPMENT
6	Other	6/12/2023	02:15					WAITING ON RIG TO FINISH RUNNING CASING. RIG LANDED CASING @ 3:00. RIG CIRCULATED FOR 1 HOUR. TOTAL VOLUME 723 BBLS. FINISH RIGGING UP HEAD AND FLOOR.
7	Safety Meeting	6/12/2023	04:15					PRE JOB SAFETY MEETING WITH RIG CREW AND COMPANY MAN.
8	Fill Lines	6/12/2023	04:38	8.34	5	10	796	FILL LINES WITH 10 BBLS OF FRESHWATER. FULL RETURNS
9	Pressure Test Lines	6/12/2023	04:41	8.34			5270	PRESSURE TEST PUMP AND IRON TO 5000 PSI
10	Pump Spacer	6/12/2023	04:43	8.45	5	0	620	BEGIN PUMPING MUD FLUSH + SURFACTANT.
11	Pump Spacer	6/12/2023	04:47	8.45	5	20	617	PUMP 20 BBLS MUD FLUSH + SURFACTANT PUMPED. FULL RETURNS
12	Pump Spacer	6/12/2023	04:47	8.34	5	0	646	PUMP 10 BBLS FRESHWATER FLUSH
13	Pump Spacer	6/12/2023	04:49	8.34	5	10	663	10 BBLS FRESHWATER AWAY SWAP TO LEAD
14	Pump Lead Cement	6/12/2023	04:49	12.5	5	0	728	BEGIN PUMPING 12.5 PPG LEAD CEMENT, WEIGHT VERIFIED BY MUD SCALE
15	Pump Lead Cement	6/12/2023	04:57	12.5	6.5	50	800	50 BBLS LEAD CEMENT PUMPED
16	Pump Lead Cement	6/12/2023	05:06	12.5	6.5	50	698	100 BBLS LEAD CEMENT PUMPED. FULL RETURNS
17	Pump Lead Cement	6/12/2023	05:10	12.5	6.5	40	714	140 BBLS (357 SKS) TOTAL LEAD CEMENT PUMPED.
18	Pump Tail Cement	6/12/2023	05:11	13	6.5	0	774	BEGIN PUMPING 13 PPG TAIL CEMENT. WEIGHT VERIFIED BY MUD SCALE.
19	Pump Tail Cement	6/12/2023	05:18	13	6.5	50	820	50 BBLS TAIL CEMENT PUMPED
20	Pump Tail Cement	6/12/2023	05:27	13	6.2	50	832	100 BBLS TAIL CEMENT PUMPED
21	Pump Tail Cement	6/12/2023	05:35	13	6.2	50	801	150 BBLS TAIL CEMENT PUMPED. FULL RETURNS
22	Pump Tail Cement	6/12/2023	05:43	13	6.2	50	814	200 BBLS TAIL CEMENT PUMPED
23	Pump Tail Cement	6/12/2023	05:51	13	6.2	50	670	250 BBLS TAIL CEMENT PUMPED
24	Pump Tail Cement	6/12/2023	05:57	13	4.5	32	475	282 BBLS (772 SKS) TOTAL TAIL CEMENT PUMPED.
25	Clean Pumps and Lines	6/12/2023	05:58					BLOW RIG AIR TO CLEAR LINES, VALVE MANIFOLD TO WASH UP PUMP AND LINES TO PIT
26	Drop Top Plug	6/12/2023	06:07	8.34	7	2	433	DROP PLUG, WITNESSED BY DRILLER BEGIN KCL DISPLACEMENT.
27	Pump Displacement	6/12/2023	06:15	8.34	7	50	844	50 BBLS DISPLACEMENT PUMPED. CAUGHT PRESSURE @ 20 BBLS DISPLACED. FULL RETURNS.
28	Pump Displacement	6/12/2023	06:22	8.34	7	50	1653	100 BBLS DISPLACEMENT PUMPED

Line	Event	Date (MM/DD/YY)	Time (HH:MM)	Density (lb/gal)	Pump Rate (bpm)	Pump Volume (bbls)	Pipe Pressure (psi)	Comment
29	Pump Displacement	6/12/2023	06:30	8.34	4	50	2001	150 BBLS DISPLACEMENT PUMPED. MAX LIFT-2360 PSI @ 7 BPM BEFORE SLOW DOWN @ 145 BBLS DISPLACED
30	Pump Displacement	6/12/2023	06:34	8.34	4	13.3	2260	163.3 BBLS (CALCULATED) DISPLACEMENT PUMPED
31	Land Plug	6/12/2023	06:34				3350	PLUG LANDED FCP-2260 PSI BUMPED TO 3350 PSI
32	Check Floats	6/12/2023	06:37					BLEED PRESSURE OFF AND CHECK FLOATS, FLOATS HELD 2.5 BBLS BACK
33	Rig Down Iron	6/12/2023	06:50					PRE RIG DOWN SAFETY MEETING. RIG DOWN EQUIPMENT, IRON AND HOSES
34	Depart Location	6/12/2023	08:00					CREW DEPARTS LOCATION

Pump Diagrams


JobMaster Program Version 5.01C1
Job Number: 87405
Customer: TERRA
Well Name: LEVERICH SR 524-13


Job Start: Monday, June 12, 2023