



Terra Energy Partners, LLC

SURFACE POST JOB REPORT

Leverich SR 524-13 05-045-24567
S:13 T:7S R:94W Garfield CO

CallSheet #: 87352
Proposal #: 69604



SURFACE Post Job Report

Attention: Mr. Dustin Childers | (936) 524-8828 | dchilders@terraep.com
Terra Energy Partners, LLC
4828 Loop Central Dr., Suite 900 | Houston, TX 77081

Dear Mr. Dustin Childers,

Thank you for the opportunity to provide cementing services on this well. American Cementing strives to achieve complete customer satisfaction. If you have any questions regarding the services or data provided, please contact American Cementing at any time.

Sincerely,

Krystal Schell

Field Engineer I | (719) 992-1830 | krystal.schell@americacementing.com

Field Office 28730 US-6, Rifle, CO 81650
Phone: (970) 657-1187

Job Details & Summary

Geometry

Type	Function	OD (in)	ID (in)	Weight (lb/ft)	Thread	Top (ft)	Bottom (ft)	Excess (%)
Casing	Outer	20	19.5	53	n/a	0	80	0
Open Hole	Outer	n/a	13.5	n/a	n/a	80	500	16
Open Hole	Outer	n/a	13.5	n/a	n/a	500	1185	16
Casing	Inner	9.625	8.921	36	n/a	0	1175	0

Equipment / People

Unit Type	Unit	Power Unit	Employee #1
Cement Trailer Float	CTF-273	TRC-059	Burton, Devin
Light Duty Vehicles	LDV-063		Castillo, Francisco
Cement Pump Float	CPF-012	TRH-677	Brady, Shawn

Timing

Event	Date/Time
ERTS	00/08/2023 00:00
Call Out	6/8/2023 02:00
Depart Facility	6/8/2023 03:07
On Location	6/8/2023 03:55
Rig Up Iron	6/8/2023 04:05
Job Started	6/8/2023 10:49
Job Completed	6/8/2023 12:10
Rig Down Iron	6/8/2023 12:15
Depart Location	6/8/2023 13:00

General Job Information

Metrics	Value
Well Fluid Density	9 lb/gal
Well Fluid Type	WBM
Rig Circulation Vol	300 bbls
Rig Circulation Time	0.5 hours
Calculated Displacement	88 bbls
Actual Displacement	88 bbls
Total Spacer to Surface	20 bbls
Total CMT to Surface	38 bbls
Well Topped Out	No

Job Details

Metrics	Value
Flare Prior to Job	No
Flare Prior to Job	0 units
Flare During Job	No
Flare During Job	0 units
Flare at End of Job	No
Flare at End of Job	0 units
Well Full Prior to Job	Yes
Well Fluid Density Into Well	9 lb/gal
Well Fluid Density Out of Well	9 lb/gal

Job Details (cont.)

Metrics	Value
BHCT	81 °F
BHST	99 °F

Water Analysis

Metrics	Value	Recommended
Water Source	Upright Rig Tank	
Temperature	61 °F	50-80 °F
pH Level	7	5.5-8.5
Chlorides	0 mg/L	0-3000 mg/L
Total Alkalinity	240	0-1000
Total Hardness	250 mg/L	0-500 mg/L
Carbonates	0 mg/L	0-100 mg/L
Sulfates	200 mg/L	0-1500 mg/L
Potassium	250 mg/L	0-3000 mg/L
Iron	0 mg/L	0-300 mg/L

Circulation

Lost Circulation Experienced

No

Job Execution Information

Fluid	Product	Function	Density (lb/gal)	Yield (ft ³ /sk)	Water Rq. (gal/sk)	Water Rq. (gal/bbl)	Volume (sks)	Volume (bbl)	Designed Top (ft)
1	Water	Flush	8.34			42.00		20.00	0
2	Lead	Lead	12.30	2.31	13.15		158.00	64.94	0
3	Tail	Tail	12.80	2.03	11.15		188.00	68.07	500
4	Water	DisplacementFinal	8.34			42.00		88.00	0

Job Fluid Details

Fluid	Type	Fluid	Product	Function	Conc.	Uom
2	Lead	Lead	ASTM TYPE IL	Cement	100.00	%
2	Lead	Lead	A-10	Accelerator	5.00	%BWOB
2	Lead	Lead	A-2	Accelerator	3.00	lb/sk
2	Lead	Lead	A-7P	Accelerator	2.00	lb/sk
2	Lead	Lead	FP-24	Defoamer	0.30	%BWOB
2	Lead	Lead	IntegraSeal POLI	LostCirculation	0.25	lb/sk
2	Lead	Lead	STATIC FREE	Other	0.01	lb/sk
3	Tail	Tail	ASTM TYPE IL	Cement	100.00	%
3	Tail	Tail	A-10	Accelerator	5.00	%BWOB
3	Tail	Tail	A-2	Accelerator	2.00	lb/sk
3	Tail	Tail	A-7P	Accelerator	2.00	lb/sk
3	Tail	Tail	FP-24	Defoamer	0.30	%BWOB
3	Tail	Tail	IntegraSeal POLI	LostCirculation	0.25	lb/sk
3	Tail	Tail	STATIC FREE	Other	0.01	lb/sk

Job Logs

Line	Event	Date (MM/DD/YY)	Time (HH:MM)	Density (lb/gal)	Pump Rate (bpm)	Pump Volume (bbls)	Pipe Pressure (psi)	Comment
1	CALLOUT	6/8/2023	02:00					ON LOCATION AT 04:00 HRS
2	LEAVE THE YARD	6/8/2023	03:07					LEAVE THE YARD
3	ON LOCATION	6/8/2023	03:55					ON LOCATION
4	RIG UP	6/8/2023	04:05					RIG UP BULK TRUCK
5	SAFETY MEETING	6/8/2023	10:30					PRE-JOB SAFETY MEETING
6	PRESSURE TEST	6/8/2023	10:46				3197	PRESSURE TEST LINES
7	WATER SPACER	6/8/2023	10:49	8.34	5	20	197	WATER SPACER
8	LEAD CEMENT	6/8/2023	10:53	12.3	6	65	449	LEAD 158 SKS/65 BBLS AT 12.3 PPG
9	TAIL CEMENT	6/8/2023	11:03	12.8	6	68	563	TAIL 188 SKS/68 BBLS AT 12.8 PPG
10	SHUTDOWN	6/8/2023	11:15					SHUTDOWN, DROP PLUG
11	DISPLACEMENT	6/8/2023	11:18	8.34	6.5	78	623	DISPLACEMENT WATER
12	SLOW RATE	6/8/2023	11:30	8.34	3	10	405	SLOW RATE
13	LAND PLUG	6/8/2023	11:34				1089	LAND PLUG, 38 BBLS CMT TO SURFACE
14	CHECK FLOATS	6/8/2023	11:36					FLOATS HELD, 0.5 BBL FLOW BACK
15	TEST CASING	6/8/2023	11:37				1309	PRESSURE TEST CASING
16	RELEASE PRESSURE	6/8/2023	12:10					RELEASE PRESSURE
17	RIG DOWN	6/8/2023	12:15					RIG DOWN MEETING, RIG DOWN
18	LEAVE LOCATION	6/8/2023	13:00					CREW LEAVE LOCATION

Pump Diagrams

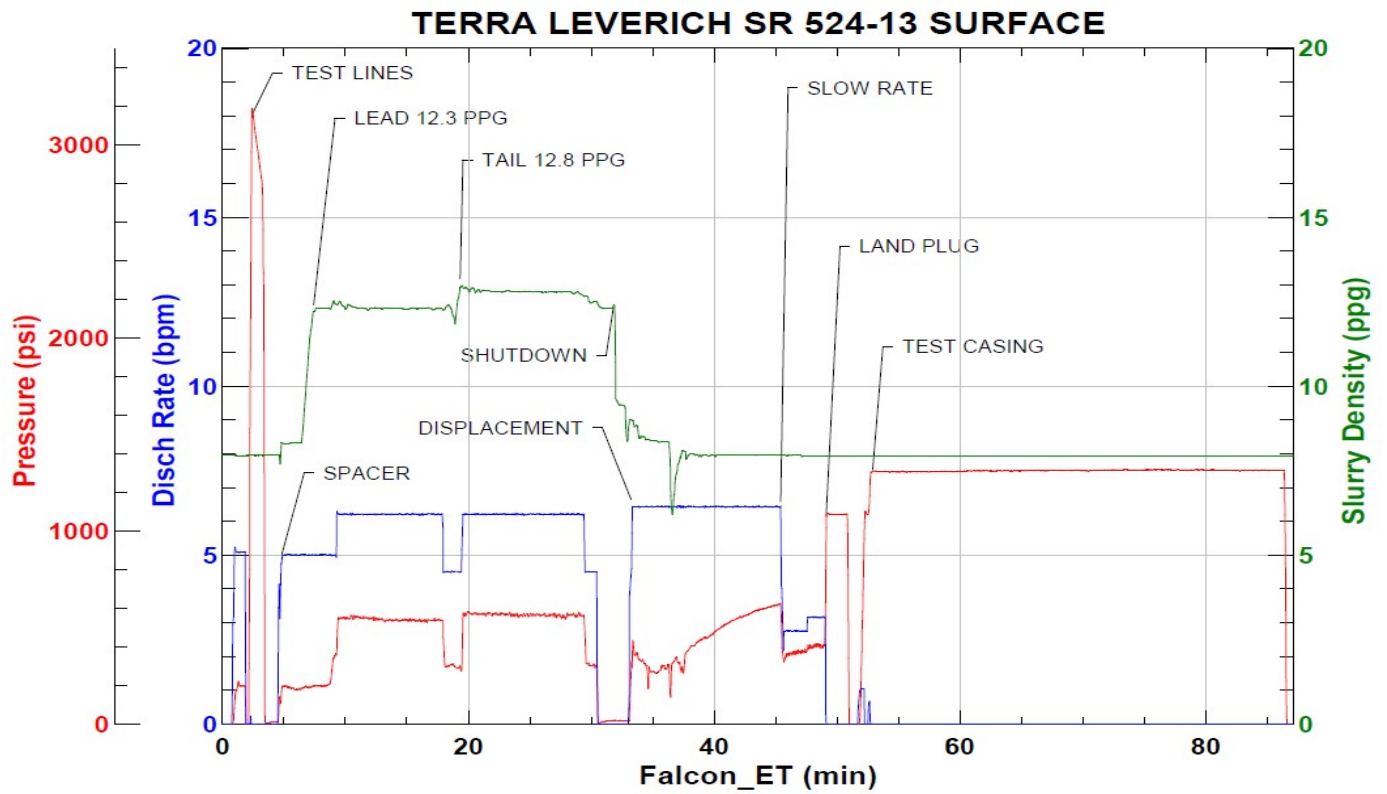


JobMaster Program Version 5.01C1

Job Number: 87352

Customer: TERRA

Well Name: LEVERICH SR 524-13



Job Start: Thursday, June 08, 2023