

# **EXTRACTION OIL & GAS**

**WELD COUNTY**

**Sec 3-T4N-R68W**

**JESSER EAST 3E-20-02**

**OWB**

**Plan: PROPOSAL 1**

## **Standard Planning Report**

**28 November, 2023**



Project: WELD COUNTY  
Site: Sec 3-T4N-R68W  
Well: JESSER EAST 3E-20-02  
Wellbore: OWB  
Design: PROPOSAL 1

PROJECT DETAILS: WELD COUNTY  
Geodetic System: US State Plane 1983  
Datum: North American Datum 1983  
Ellipsoid: GRS 1980  
Zone: Colorado Northern Zone  
System Datum: Mean Sea Level



Azimuths to True North  
Magnetic North: 7.73°  
Magnetic Field  
Strength: 51652.6nT  
Dip Angle: 66.48°  
Date: 10/11/2023  
Model: IGRF2020

#### WELL DETAILS: JESSER EAST 3E-20-02

			5111.00				
	+N/-S	+E/-W	Northing	Easting	Latitude	Longitude	Slot
	0.00	0.00	1367724.98	3140311.59	40.341713°N	104.996637°W	

#### SECTION DETAILS

Sec	MD	Inc	Azi	TVD	+N/-S	+E/-W	Dleg	TFace	VSec	Target
1	0.00	0.00	0.00	0.00	0.00	0.00	0.00	0.00	0.00	
2	200.00	0.00	0.00	200.00	0.00	0.00	0.00	0.00	0.00	
3	1969.27	35.39	69.61	1858.92	184.37	496.04	2.00	69.61	512.51	
4	8310.57	35.39	69.61	7028.83	1463.74	3938.05	0.00	0.00	4068.80	
5	8881.61	90.00	89.91	7283.00	1527.16	4419.03	10.00	24.40	4553.76	LP-JESSER EAST 3E-20-02
6	19247.68	90.00	89.91	7283.00	1544.30	14785.08	0.00	0.00	14865.52	PBHL-JESSER EAST 3E-20-02

#### ANNOTATIONS

MD	Inc	Azi	TVD	+N/-S	+E/-W	VSec	Departure	Annotation
200.00	0.00	0.00	200.00	0.00	0.00	0.00	0.00	Start Build 2.00
1969.27	35.39	69.61	1858.92	184.37	496.04	512.51	529.20	Start 6341.31 hold at 1969.27 MD
8310.57	35.39	69.61	7028.83	1463.74	3938.05	4068.80	4201.28	Start DLS 10.00 TFO 24.40
8881.61	90.00	89.91	7283.00	1527.16	4419.03	4553.76	4688.51	Start 10366.07 hold at 8881.61 MD
19247.68	90.00	89.91	7283.00	1544.30	14785.08	14865.51	15054.58	TD at 19247.68

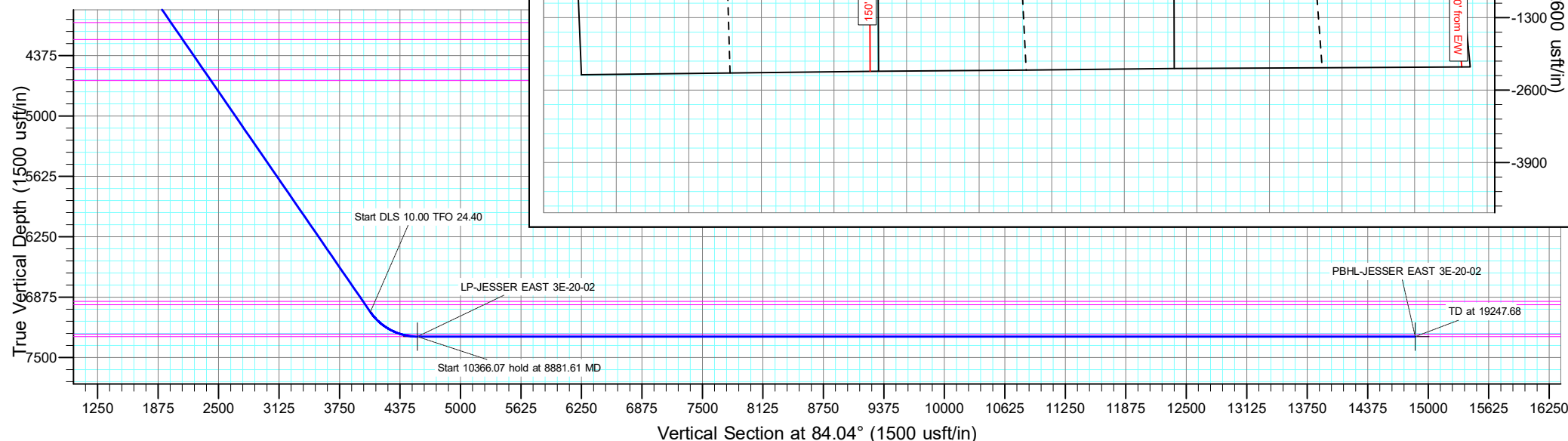
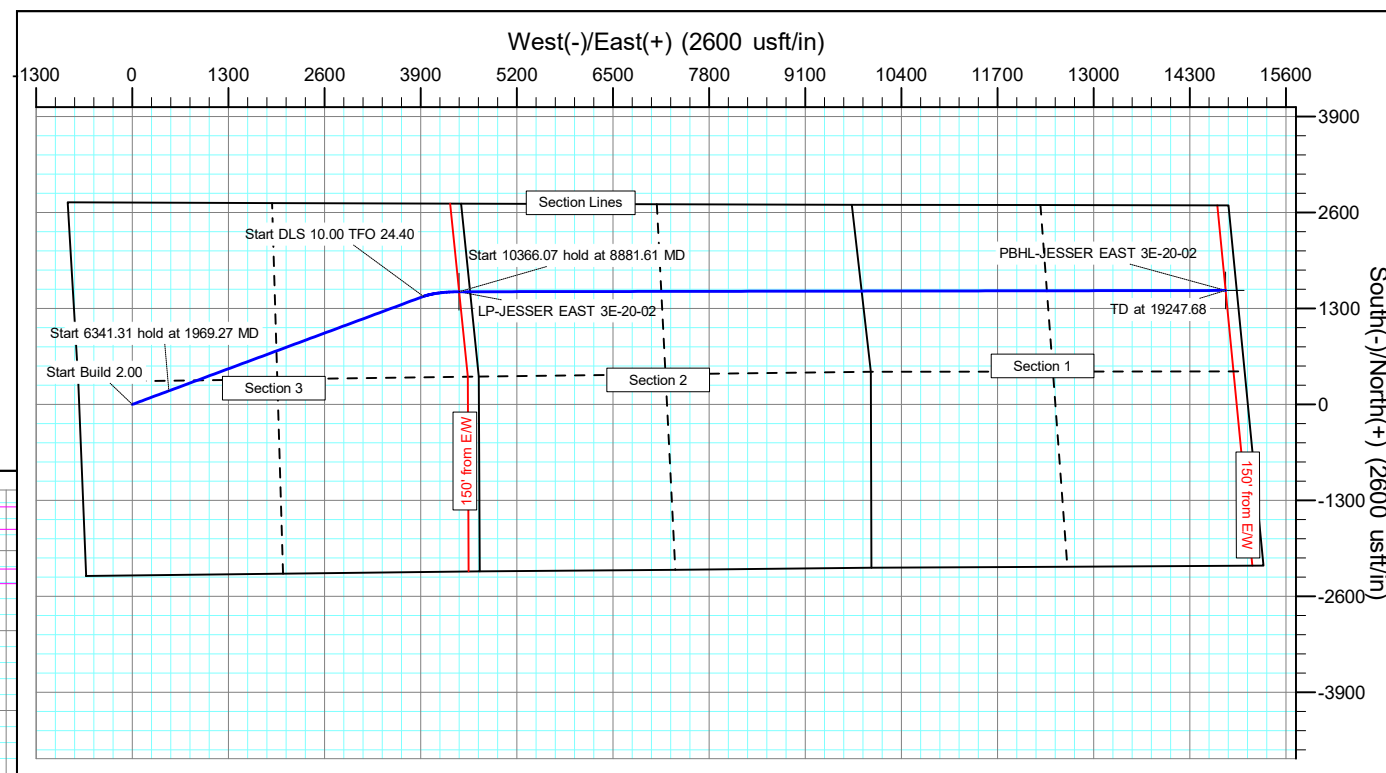
#### DESIGN TARGET DETAILS

Name	TVD	+N/-S	+E/-W	Northing	Easting	Latitude	Longitude	Shape
LP-JESSER EAST 3E-20-02 7283.00	1527.16		4419.03	1369277.20	3144721.87	40.345904°N	104.980783°W	Point
- plan hits target center								
PBHL-JESSER EAST 3E-20-02 7283.00	1544.30		14785.08	1369353.18	3155087.67	40.345940°N	104.943593°W	Point
- plan hits target center								

#### FORMATION TOP DETAILS

TVDPath	MDPath	Formation
24.00	24.00	Alluvium
104.00	104.00	Pierre Formation
293.00	293.02	Upper Pierre aquifer
1083.00	1097.62	Base of Upper Pierre aquifer
3533.00	4022.66	Larimer ("Parkman") sandstone
3863.00	4427.43	Pierre Formation
4033.00	4635.95	Terry ("Sussex") sandstone
4208.00	4850.60	Pierre Formation
4519.00	5232.07	Hygiene ("Shannon") sandstone
4633.00	5371.90	Pierre Formation
6918.00	8174.63	Sharon Springs Member
6953.00	8217.56	Niobrara Formation
7258.00	8709.19	Fort Hays limestone
7283.00	8881.61	Codell sandstone

SHL:  
2316' FSL, 716' FWL  
Sec 3-T4N-R68W  
LP\*  
1193' FNL, 150' FEL  
Sec 3-T4N-R68W  
BHL:  
1154' FNL, 150' FEL  
Sec 1-T4N-R68W



# Civitas Resources

## Planning Report

<b>Database:</b>	EDM	<b>Local Co-ordinate Reference:</b>	Well JESSER EAST 3E-20-02
<b>Company:</b>	EXTRACTION OIL & GAS	<b>TVD Reference:</b>	KB 25' @ 5136.00usft
<b>Project:</b>	WELD COUNTY	<b>MD Reference:</b>	KB 25' @ 5136.00usft
<b>Site:</b>	Sec 3-T4N-R68W	<b>North Reference:</b>	True
<b>Well:</b>	JESSER EAST 3E-20-02	<b>Survey Calculation Method:</b>	Minimum Curvature
<b>Wellbore:</b>	OWB		
<b>Design:</b>	PROPOSAL 1		

<b>Project</b>	WELD COUNTY		
<b>Map System:</b>	US State Plane 1983	<b>System Datum:</b>	Mean Sea Level
<b>Geo Datum:</b>	North American Datum 1983		
<b>Map Zone:</b>	Colorado Northern Zone		

Site		Sec 3-T4N-R68W			
Site Position:		Northing:	1,365,399.13 usft	Latitude:	40.335338°N
From:	Lat/Long	Easting:	3,139,700.88 usft	Longitude:	104.998875°W
Position Uncertainty:	0.00 usft	Slot Radius:	13.200 in	Grid Convergence:	0.32 °

Well	JESSER EAST 3E-20-02					
Well Position	+N/-S	2,322.36 usft	Northing:	1,367,724.98 usft	Latitude:	40.341713°N
	+E/-W	623.84 usft	Easting:	3,140,311.59 usft	Longitude:	104.996637°W
Position Uncertainty		0.00 usft	Wellhead Elevation:		Ground Level:	5,111.00 usft

<b>Wellbore</b>	OWB				
<b>Magnetics</b>	<b>Model Name</b>	<b>Sample Date</b>	<b>Declination (°)</b>	<b>Dip Angle (°)</b>	<b>Field Strength (nT)</b>
	IGRF2020	10/11/2023	7.73	66.48	51,652.59916738

<b>Design</b>	PROPOSAL 1			
<b>Audit Notes:</b>				
<b>Version:</b>	<b>Phase:</b>	PROTOTYPE	<b>Tie On Depth:</b>	0.00
<b>Vertical Section:</b>	<b>Depth From (TVD) (usft)</b>	<b>+N/-S (usft)</b>	<b>+E/-W (usft)</b>	<b>Direction (°)</b>
	0.00	0.00	0.00	84.04

<b>Plan Survey Tool Program</b>	<b>Date</b>	10/11/2023		
<b>Depth From (usft)</b>	<b>Depth To (usft)</b>	<b>Survey (Wellbore)</b>	<b>Tool Name</b>	<b>Remarks</b>
1	0.00	19,247.68	PROPOSAL 1 (OWB)	MWD OWSG
				OWSG MWD - Standard

<b>Plan Sections</b>										
<b>Measured Depth (usft)</b>	<b>Inclination (°)</b>	<b>Azimuth (°)</b>	<b>Vertical Depth (usft)</b>	<b>+N/-S (usft)</b>	<b>+E/-W (usft)</b>	<b>Dogleg Rate (°/100ft)</b>	<b>Build Rate (°/100ft)</b>	<b>Turn Rate (°/100ft)</b>	<b>TFO (°)</b>	<b>Target</b>
0.00	0.00	0.00	0.00	0.00	0.00	0.00	0.00	0.00	0.00	
200.00	0.00	0.00	200.00	0.00	0.00	0.00	0.00	0.00	0.00	
1,969.27	35.39	69.61	1,858.92	184.37	496.04	2.00	2.00	0.00	69.61	
8,310.57	35.39	69.61	7,028.83	1,463.74	3,938.05	0.00	0.00	0.00	0.00	
8,881.61	90.00	89.91	7,283.00	1,527.16	4,419.03	10.00	9.56	3.55	24.40	LP-JESSER EAST 3E
19,247.68	90.00	89.91	7,283.00	1,544.30	14,785.08	0.00	0.00	0.00	0.00	PBHL-JESSER EAST

# Civitas Resources

## Planning Report

<b>Database:</b>	EDM	<b>Local Co-ordinate Reference:</b>	Well JESSER EAST 3E-20-02
<b>Company:</b>	EXTRACTION OIL & GAS	<b>TVD Reference:</b>	KB 25' @ 5136.00usft
<b>Project:</b>	WELD COUNTY	<b>MD Reference:</b>	KB 25' @ 5136.00usft
<b>Site:</b>	Sec 3-T4N-R68W	<b>North Reference:</b>	True
<b>Well:</b>	JESSER EAST 3E-20-02	<b>Survey Calculation Method:</b>	Minimum Curvature
<b>Wellbore:</b>	OWB		
<b>Design:</b>	PROPOSAL 1		

Planned Survey									
Measured Depth (usft)	Inclination (°)	Azimuth (°)	Vertical Depth (usft)	+N/-S (usft)	+E/-W (usft)	Vertical Section (usft)	Dogleg Rate (°/100ft)	Build Rate (°/100ft)	Turn Rate (°/100ft)
0.00	0.00	0.00	0.00	0.00	0.00	0.00	0.00	0.00	0.00
24.00	0.00	0.00	24.00	0.00	0.00	0.00	0.00	0.00	0.00
Alluvium									
100.00	0.00	0.00	100.00	0.00	0.00	0.00	0.00	0.00	0.00
104.00	0.00	0.00	104.00	0.00	0.00	0.00	0.00	0.00	0.00
Pierre Formation									
200.00	0.00	0.00	200.00	0.00	0.00	0.00	0.00	0.00	0.00
Start Build 2.00									
293.02	1.86	69.61	293.00	0.53	1.42	1.46	2.00	2.00	0.00
Upper Pierre aquifer									
300.00	2.00	69.61	299.98	0.61	1.64	1.69	2.00	2.00	0.00
400.00	4.00	69.61	399.84	2.43	6.54	6.76	2.00	2.00	0.00
500.00	6.00	69.61	499.45	5.47	14.71	15.20	2.00	2.00	0.00
600.00	8.00	69.61	598.70	9.71	26.13	27.00	2.00	2.00	0.00
700.00	10.00	69.61	697.47	15.16	40.80	42.15	2.00	2.00	0.00
800.00	12.00	69.61	795.62	21.81	58.68	60.63	2.00	2.00	0.00
900.00	14.00	69.61	893.06	29.65	79.76	82.41	2.00	2.00	0.00
1,000.00	16.00	69.61	989.64	38.66	104.02	107.48	2.00	2.00	0.00
1,097.62	17.95	69.61	1,083.00	48.59	130.74	135.08	2.00	2.00	0.00
Base of Upper Pierre aquifer									
1,100.00	18.00	69.61	1,085.27	48.85	131.43	135.79	2.00	2.00	0.00
1,200.00	20.00	69.61	1,179.82	60.19	161.94	167.32	2.00	2.00	0.00
1,300.00	22.00	69.61	1,273.17	72.68	195.53	202.03	2.00	2.00	0.00
1,400.00	24.00	69.61	1,365.21	86.29	232.16	239.86	2.00	2.00	0.00
1,500.00	26.00	69.61	1,455.84	101.01	271.77	280.79	2.00	2.00	0.00
1,600.00	28.00	69.61	1,544.94	116.83	314.32	324.76	2.00	2.00	0.00
1,700.00	30.00	69.61	1,632.39	133.72	359.76	371.71	2.00	2.00	0.00
1,800.00	32.00	69.61	1,718.11	151.66	408.04	421.58	2.00	2.00	0.00
1,900.00	34.00	69.61	1,801.97	170.64	459.09	474.33	2.00	2.00	0.00
1,969.27	35.39	69.61	1,858.92	184.37	496.04	512.51	2.00	2.00	0.00
Start 6341.31 hold at 1969.27 MD									
2,000.00	35.39	69.61	1,883.98	190.57	512.72	529.74	0.00	0.00	0.00
2,100.00	35.39	69.61	1,965.50	210.75	567.00	585.83	0.00	0.00	0.00
2,200.00	35.39	69.61	2,047.03	230.93	621.28	641.91	0.00	0.00	0.00
2,300.00	35.39	69.61	2,128.56	251.10	675.56	697.99	0.00	0.00	0.00
2,400.00	35.39	69.61	2,210.09	271.28	729.84	754.07	0.00	0.00	0.00
2,500.00	35.39	69.61	2,291.61	291.45	784.12	810.15	0.00	0.00	0.00
2,600.00	35.39	69.61	2,373.14	311.63	838.40	866.23	0.00	0.00	0.00
2,700.00	35.39	69.61	2,454.67	331.80	892.67	922.31	0.00	0.00	0.00
2,800.00	35.39	69.61	2,536.20	351.98	946.95	978.40	0.00	0.00	0.00
2,900.00	35.39	69.61	2,617.72	372.15	1,001.23	1,034.48	0.00	0.00	0.00
3,000.00	35.39	69.61	2,699.25	392.33	1,055.51	1,090.56	0.00	0.00	0.00
3,100.00	35.39	69.61	2,780.78	412.50	1,109.79	1,146.64	0.00	0.00	0.00
3,200.00	35.39	69.61	2,862.31	432.68	1,164.07	1,202.72	0.00	0.00	0.00
3,300.00	35.39	69.61	2,943.83	452.85	1,218.35	1,258.80	0.00	0.00	0.00
3,400.00	35.39	69.61	3,025.36	473.03	1,272.63	1,314.88	0.00	0.00	0.00
3,500.00	35.39	69.61	3,106.89	493.20	1,326.91	1,370.96	0.00	0.00	0.00
3,600.00	35.39	69.61	3,188.42	513.38	1,381.19	1,427.05	0.00	0.00	0.00
3,700.00	35.39	69.61	3,269.94	533.55	1,435.47	1,483.13	0.00	0.00	0.00
3,800.00	35.39	69.61	3,351.47	553.73	1,489.75	1,539.21	0.00	0.00	0.00
3,900.00	35.39	69.61	3,433.00	573.90	1,544.02	1,595.29	0.00	0.00	0.00
4,000.00	35.39	69.61	3,514.53	594.08	1,598.30	1,651.37	0.00	0.00	0.00
4,022.66	35.39	69.61	3,533.00	598.65	1,610.60	1,664.08	0.00	0.00	0.00

# Civitas Resources

## Planning Report

<b>Database:</b>	EDM	<b>Local Co-ordinate Reference:</b>	Well JESSER EAST 3E-20-02
<b>Company:</b>	EXTRACTION OIL & GAS	<b>TVD Reference:</b>	KB 25' @ 5136.00usft
<b>Project:</b>	WELD COUNTY	<b>MD Reference:</b>	KB 25' @ 5136.00usft
<b>Site:</b>	Sec 3-T4N-R68W	<b>North Reference:</b>	True
<b>Well:</b>	JESSER EAST 3E-20-02	<b>Survey Calculation Method:</b>	Minimum Curvature
<b>Wellbore:</b>	OWB		
<b>Design:</b>	PROPOSAL 1		

Planned Survey										
Measured Depth (usft)	Inclination (°)	Azimuth (°)	Vertical Depth (usft)	+N/-S (usft)	+E/-W (usft)	Vertical Section (usft)	Dogleg Rate (°/100ft)	Build Rate (°/100ft)	Turn Rate (°/100ft)	
<b>Larimer ("Parkman") sandstone</b>										
4,100.00	35.39	69.61	3,596.05	614.25	1,652.58	1,707.45	0.00	0.00	0.00	
4,200.00	35.39	69.61	3,677.58	634.43	1,706.86	1,763.53	0.00	0.00	0.00	
4,300.00	35.39	69.61	3,759.11	654.60	1,761.14	1,819.62	0.00	0.00	0.00	
4,400.00	35.39	69.61	3,840.64	674.78	1,815.42	1,875.70	0.00	0.00	0.00	
4,427.43	35.39	69.61	3,863.00	680.31	1,830.31	1,891.08	0.00	0.00	0.00	
<b>Pierre Formation</b>										
4,500.00	35.39	69.61	3,922.16	694.95	1,869.70	1,931.78	0.00	0.00	0.00	
4,600.00	35.39	69.61	4,003.69	715.13	1,923.98	1,987.86	0.00	0.00	0.00	
4,635.95	35.39	69.61	4,033.00	722.38	1,943.49	2,008.02	0.00	0.00	0.00	
<b>Terry ("Sussex") sandstone</b>										
4,700.00	35.39	69.61	4,085.22	735.30	1,978.26	2,043.94	0.00	0.00	0.00	
4,800.00	35.39	69.61	4,166.75	755.48	2,032.54	2,100.02	0.00	0.00	0.00	
4,850.60	35.39	69.61	4,208.00	765.69	2,060.00	2,128.40	0.00	0.00	0.00	
<b>Pierre Formation</b>										
4,900.00	35.39	69.61	4,248.27	775.65	2,086.82	2,156.10	0.00	0.00	0.00	
5,000.00	35.39	69.61	4,329.80	795.83	2,141.10	2,212.19	0.00	0.00	0.00	
5,100.00	35.39	69.61	4,411.33	816.01	2,195.37	2,268.27	0.00	0.00	0.00	
5,200.00	35.39	69.61	4,492.86	836.18	2,249.65	2,324.35	0.00	0.00	0.00	
5,232.07	35.39	69.61	4,519.00	842.65	2,267.06	2,342.33	0.00	0.00	0.00	
<b>Hygiene ("Shannon") sandstone</b>										
5,300.00	35.39	69.61	4,574.38	856.36	2,303.93	2,380.43	0.00	0.00	0.00	
5,371.90	35.39	69.61	4,633.00	870.86	2,342.96	2,420.75	0.00	0.00	0.00	
<b>Pierre Formation</b>										
5,400.00	35.39	69.61	4,655.91	876.53	2,358.21	2,436.51	0.00	0.00	0.00	
5,500.00	35.39	69.61	4,737.44	896.71	2,412.49	2,492.59	0.00	0.00	0.00	
5,600.00	35.39	69.61	4,818.97	916.88	2,466.77	2,548.67	0.00	0.00	0.00	
5,700.00	35.39	69.61	4,900.49	937.06	2,521.05	2,604.75	0.00	0.00	0.00	
5,800.00	35.39	69.61	4,982.02	957.23	2,575.33	2,660.84	0.00	0.00	0.00	
5,900.00	35.39	69.61	5,063.55	977.41	2,629.61	2,716.92	0.00	0.00	0.00	
6,000.00	35.39	69.61	5,145.08	997.58	2,683.89	2,773.00	0.00	0.00	0.00	
6,100.00	35.39	69.61	5,226.60	1,017.76	2,738.17	2,829.08	0.00	0.00	0.00	
6,200.00	35.39	69.61	5,308.13	1,037.93	2,792.45	2,885.16	0.00	0.00	0.00	
6,300.00	35.39	69.61	5,389.66	1,058.11	2,846.72	2,941.24	0.00	0.00	0.00	
6,400.00	35.39	69.61	5,471.19	1,078.28	2,901.00	2,997.32	0.00	0.00	0.00	
6,500.00	35.39	69.61	5,552.71	1,098.46	2,955.28	3,053.41	0.00	0.00	0.00	
6,600.00	35.39	69.61	5,634.24	1,118.63	3,009.56	3,109.49	0.00	0.00	0.00	
6,700.00	35.39	69.61	5,715.77	1,138.81	3,063.84	3,165.57	0.00	0.00	0.00	
6,800.00	35.39	69.61	5,797.30	1,158.98	3,118.12	3,221.65	0.00	0.00	0.00	
6,900.00	35.39	69.61	5,878.82	1,179.16	3,172.40	3,277.73	0.00	0.00	0.00	
7,000.00	35.39	69.61	5,960.35	1,199.33	3,226.68	3,333.81	0.00	0.00	0.00	
7,100.00	35.39	69.61	6,041.88	1,219.51	3,280.96	3,389.89	0.00	0.00	0.00	
7,200.00	35.39	69.61	6,123.41	1,239.68	3,335.24	3,445.97	0.00	0.00	0.00	
7,300.00	35.39	69.61	6,204.93	1,259.86	3,389.52	3,502.06	0.00	0.00	0.00	
7,400.00	35.39	69.61	6,286.46	1,280.03	3,443.80	3,558.14	0.00	0.00	0.00	
7,500.00	35.39	69.61	6,367.99	1,300.21	3,498.07	3,614.22	0.00	0.00	0.00	
7,600.00	35.39	69.61	6,449.52	1,320.38	3,552.35	3,670.30	0.00	0.00	0.00	
7,700.00	35.39	69.61	6,531.04	1,340.56	3,606.63	3,726.38	0.00	0.00	0.00	
7,800.00	35.39	69.61	6,612.57	1,360.73	3,660.91	3,782.46	0.00	0.00	0.00	
7,900.00	35.39	69.61	6,694.10	1,380.91	3,715.19	3,838.54	0.00	0.00	0.00	
8,000.00	35.39	69.61	6,775.63	1,401.09	3,769.47	3,894.63	0.00	0.00	0.00	
8,100.00	35.39	69.61	6,857.15	1,421.26	3,823.75	3,950.71	0.00	0.00	0.00	
8,174.63	35.39	69.61	6,918.00	1,436.32	3,864.26	3,992.56	0.00	0.00	0.00	

# Civitas Resources

## Planning Report

<b>Database:</b>	EDM	<b>Local Co-ordinate Reference:</b>	Well JESSER EAST 3E-20-02
<b>Company:</b>	EXTRACTION OIL & GAS	<b>TVD Reference:</b>	KB 25' @ 5136.00usft
<b>Project:</b>	WELD COUNTY	<b>MD Reference:</b>	KB 25' @ 5136.00usft
<b>Site:</b>	Sec 3-T4N-R68W	<b>North Reference:</b>	True
<b>Well:</b>	JESSER EAST 3E-20-02	<b>Survey Calculation Method:</b>	Minimum Curvature
<b>Wellbore:</b>	OWB		
<b>Design:</b>	PROPOSAL 1		

Planned Survey									
Measured Depth (usft)	Inclination (°)	Azimuth (°)	Vertical Depth (usft)	+N/-S (usft)	+E/-W (usft)	Vertical Section (usft)	Dogleg Rate (°/100ft)	Build Rate (°/100ft)	Turn Rate (°/100ft)
<b>Sharon Springs Member</b>									
8,200.00	35.39	69.61	6,938.68	1,441.44	3,878.03	4,006.79	0.00	0.00	0.00
8,217.56	35.39	69.61	6,953.00	1,444.98	3,887.56	4,016.64	0.00	0.00	0.00
<b>Niobrara Formation</b>									
8,300.00	35.39	69.61	7,020.21	1,461.61	3,932.31	4,062.87	0.00	0.00	0.00
8,310.57	35.39	69.61	7,028.83	1,463.74	3,938.05	4,068.80	0.00	0.00	0.00
<b>Start DLS 10.00 TFO 24.40</b>									
8,350.00	39.01	72.20	7,060.23	1,471.52	3,960.57	4,092.01	10.00	9.18	6.56
8,400.00	43.66	74.95	7,097.77	1,480.82	3,992.24	4,124.47	10.00	9.32	5.50
8,450.00	48.38	77.26	7,132.48	1,489.43	4,027.16	4,160.10	10.00	9.43	4.63
8,500.00	53.14	79.26	7,164.10	1,497.28	4,065.06	4,198.61	10.00	9.51	4.00
8,550.00	57.92	81.02	7,192.40	1,504.32	4,105.66	4,239.72	10.00	9.57	3.52
8,600.00	62.73	82.61	7,217.15	1,510.49	4,148.65	4,283.12	10.00	9.61	3.17
8,650.00	67.55	84.06	7,238.16	1,515.74	4,193.70	4,328.47	10.00	9.65	2.91
8,700.00	72.38	85.42	7,255.29	1,520.03	4,240.46	4,375.42	10.00	9.67	2.71
8,709.19	73.27	85.66	7,258.00	1,520.72	4,249.21	4,384.20	10.00	9.68	2.62
<b>Fort Hays limestone</b>									
8,750.00	77.23	86.70	7,268.39	1,523.34	4,288.58	4,423.63	10.00	9.69	2.56
8,800.00	82.08	87.94	7,277.37	1,525.64	4,337.70	4,472.72	10.00	9.70	2.47
8,850.00	86.93	89.15	7,282.15	1,526.90	4,387.44	4,522.32	10.00	9.71	2.42
8,881.61	90.00	89.91	7,283.00	1,527.16	4,419.03	4,553.76	10.00	9.71	2.39
<b>Start 10366.07 hold at 8881.61 MD - Codell sandstone</b>									
8,900.00	90.00	89.91	7,283.00	1,527.19	4,437.42	4,572.06	0.00	0.00	0.00
9,000.00	90.00	89.91	7,283.00	1,527.35	4,537.42	4,671.54	0.00	0.00	0.00
9,100.00	90.00	89.91	7,283.00	1,527.52	4,637.42	4,771.01	0.00	0.00	0.00
9,200.00	90.00	89.91	7,283.00	1,527.68	4,737.42	4,870.49	0.00	0.00	0.00
9,300.00	90.00	89.91	7,283.00	1,527.85	4,837.42	4,969.97	0.00	0.00	0.00
9,400.00	90.00	89.91	7,283.00	1,528.01	4,937.42	5,069.44	0.00	0.00	0.00
9,500.00	90.00	89.91	7,283.00	1,528.18	5,037.42	5,168.92	0.00	0.00	0.00
9,600.00	90.00	89.91	7,283.00	1,528.35	5,137.42	5,268.39	0.00	0.00	0.00
9,700.00	90.00	89.91	7,283.00	1,528.51	5,237.42	5,367.87	0.00	0.00	0.00
9,800.00	90.00	89.91	7,283.00	1,528.68	5,337.42	5,467.35	0.00	0.00	0.00
9,900.00	90.00	89.91	7,283.00	1,528.84	5,437.42	5,566.82	0.00	0.00	0.00
10,000.00	90.00	89.91	7,283.00	1,529.01	5,537.42	5,666.30	0.00	0.00	0.00
10,100.00	90.00	89.91	7,283.00	1,529.17	5,637.42	5,765.77	0.00	0.00	0.00
10,200.00	90.00	89.91	7,283.00	1,529.34	5,737.42	5,865.25	0.00	0.00	0.00
10,300.00	90.00	89.91	7,283.00	1,529.50	5,837.42	5,964.73	0.00	0.00	0.00
10,400.00	90.00	89.91	7,283.00	1,529.67	5,937.42	6,064.20	0.00	0.00	0.00
10,500.00	90.00	89.91	7,283.00	1,529.83	6,037.42	6,163.68	0.00	0.00	0.00
10,600.00	90.00	89.91	7,283.00	1,530.00	6,137.42	6,263.15	0.00	0.00	0.00
10,700.00	90.00	89.91	7,283.00	1,530.16	6,237.42	6,362.63	0.00	0.00	0.00
10,800.00	90.00	89.91	7,283.00	1,530.33	6,337.42	6,462.11	0.00	0.00	0.00
10,900.00	90.00	89.91	7,283.00	1,530.50	6,437.42	6,561.58	0.00	0.00	0.00
11,000.00	90.00	89.91	7,283.00	1,530.66	6,537.42	6,661.06	0.00	0.00	0.00
11,100.00	90.00	89.91	7,283.00	1,530.83	6,637.42	6,760.53	0.00	0.00	0.00
11,200.00	90.00	89.91	7,283.00	1,530.99	6,737.42	6,860.01	0.00	0.00	0.00
11,300.00	90.00	89.91	7,283.00	1,531.16	6,837.42	6,959.49	0.00	0.00	0.00
11,400.00	90.00	89.91	7,283.00	1,531.32	6,937.42	7,058.96	0.00	0.00	0.00
11,500.00	90.00	89.91	7,283.00	1,531.49	7,037.42	7,158.44	0.00	0.00	0.00
11,600.00	90.00	89.91	7,283.00	1,531.65	7,137.42	7,257.91	0.00	0.00	0.00
11,700.00	90.00	89.91	7,283.00	1,531.82	7,237.42	7,357.39	0.00	0.00	0.00
11,800.00	90.00	89.91	7,283.00	1,531.98	7,337.42	7,456.87	0.00	0.00	0.00
11,900.00	90.00	89.91	7,283.00	1,532.15	7,437.42	7,556.34	0.00	0.00	0.00

# Civitas Resources

## Planning Report

<b>Database:</b>	EDM	<b>Local Co-ordinate Reference:</b>	Well JESSER EAST 3E-20-02
<b>Company:</b>	EXTRACTION OIL & GAS	<b>TVD Reference:</b>	KB 25' @ 5136.00usft
<b>Project:</b>	WELD COUNTY	<b>MD Reference:</b>	KB 25' @ 5136.00usft
<b>Site:</b>	Sec 3-T4N-R68W	<b>North Reference:</b>	True
<b>Well:</b>	JESSER EAST 3E-20-02	<b>Survey Calculation Method:</b>	Minimum Curvature
<b>Wellbore:</b>	OWB		
<b>Design:</b>	PROPOSAL 1		

Planned Survey										
Measured Depth (usft)	Inclination (°)	Azimuth (°)	Vertical Depth (usft)	+N/-S (usft)	+E/-W (usft)	Vertical Section (usft)	Dogleg Rate (°/100ft)	Build Rate (°/100ft)	Turn Rate (°/100ft)	
12,000.00	90.00	89.91	7,283.00	1,532.31	7,537.42	7,655.82	0.00	0.00	0.00	
12,100.00	90.00	89.91	7,283.00	1,532.48	7,637.42	7,755.29	0.00	0.00	0.00	
12,200.00	90.00	89.91	7,283.00	1,532.64	7,737.42	7,854.77	0.00	0.00	0.00	
12,300.00	90.00	89.91	7,283.00	1,532.81	7,837.42	7,954.25	0.00	0.00	0.00	
12,400.00	90.00	89.91	7,283.00	1,532.98	7,937.42	8,053.72	0.00	0.00	0.00	
12,500.00	90.00	89.91	7,283.00	1,533.14	8,037.42	8,153.20	0.00	0.00	0.00	
12,600.00	90.00	89.91	7,283.00	1,533.31	8,137.42	8,252.67	0.00	0.00	0.00	
12,700.00	90.00	89.91	7,283.00	1,533.47	8,237.42	8,352.15	0.00	0.00	0.00	
12,800.00	90.00	89.91	7,283.00	1,533.64	8,337.42	8,451.63	0.00	0.00	0.00	
12,900.00	90.00	89.91	7,283.00	1,533.80	8,437.41	8,551.10	0.00	0.00	0.00	
13,000.00	90.00	89.91	7,283.00	1,533.97	8,537.41	8,650.58	0.00	0.00	0.00	
13,100.00	90.00	89.91	7,283.00	1,534.13	8,637.41	8,750.05	0.00	0.00	0.00	
13,200.00	90.00	89.91	7,283.00	1,534.30	8,737.41	8,849.53	0.00	0.00	0.00	
13,300.00	90.00	89.91	7,283.00	1,534.46	8,837.41	8,949.01	0.00	0.00	0.00	
13,400.00	90.00	89.91	7,283.00	1,534.63	8,937.41	9,048.48	0.00	0.00	0.00	
13,500.00	90.00	89.91	7,283.00	1,534.79	9,037.41	9,147.96	0.00	0.00	0.00	
13,600.00	90.00	89.91	7,283.00	1,534.96	9,137.41	9,247.43	0.00	0.00	0.00	
13,700.00	90.00	89.91	7,283.00	1,535.13	9,237.41	9,346.91	0.00	0.00	0.00	
13,800.00	90.00	89.91	7,283.00	1,535.29	9,337.41	9,446.39	0.00	0.00	0.00	
13,900.00	90.00	89.91	7,283.00	1,535.46	9,437.41	9,545.86	0.00	0.00	0.00	
14,000.00	90.00	89.91	7,283.00	1,535.62	9,537.41	9,645.34	0.00	0.00	0.00	
14,100.00	90.00	89.91	7,283.00	1,535.79	9,637.41	9,744.81	0.00	0.00	0.00	
14,200.00	90.00	89.91	7,283.00	1,535.95	9,737.41	9,844.29	0.00	0.00	0.00	
14,300.00	90.00	89.91	7,283.00	1,536.12	9,837.41	9,943.77	0.00	0.00	0.00	
14,400.00	90.00	89.91	7,283.00	1,536.28	9,937.41	10,043.24	0.00	0.00	0.00	
14,500.00	90.00	89.91	7,283.00	1,536.45	10,037.41	10,142.72	0.00	0.00	0.00	
14,600.00	90.00	89.91	7,283.00	1,536.61	10,137.41	10,242.19	0.00	0.00	0.00	
14,700.00	90.00	89.91	7,283.00	1,536.78	10,237.41	10,341.67	0.00	0.00	0.00	
14,800.00	90.00	89.91	7,283.00	1,536.94	10,337.41	10,441.15	0.00	0.00	0.00	
14,900.00	90.00	89.91	7,283.00	1,537.11	10,437.41	10,540.62	0.00	0.00	0.00	
15,000.00	90.00	89.91	7,283.00	1,537.28	10,537.41	10,640.10	0.00	0.00	0.00	
15,100.00	90.00	89.91	7,283.00	1,537.44	10,637.41	10,739.57	0.00	0.00	0.00	
15,200.00	90.00	89.91	7,283.00	1,537.61	10,737.41	10,839.05	0.00	0.00	0.00	
15,300.00	90.00	89.91	7,283.00	1,537.77	10,837.41	10,938.52	0.00	0.00	0.00	
15,400.00	90.00	89.91	7,283.00	1,537.94	10,937.41	11,038.00	0.00	0.00	0.00	
15,500.00	90.00	89.91	7,283.00	1,538.10	11,037.41	11,137.48	0.00	0.00	0.00	
15,600.00	90.00	89.91	7,283.00	1,538.27	11,137.41	11,236.95	0.00	0.00	0.00	
15,700.00	90.00	89.91	7,283.00	1,538.43	11,237.41	11,336.43	0.00	0.00	0.00	
15,800.00	90.00	89.91	7,283.00	1,538.60	11,337.41	11,435.90	0.00	0.00	0.00	
15,900.00	90.00	89.91	7,283.00	1,538.76	11,437.41	11,535.38	0.00	0.00	0.00	
16,000.00	90.00	89.91	7,283.00	1,538.93	11,537.41	11,634.86	0.00	0.00	0.00	
16,100.00	90.00	89.91	7,283.00	1,539.09	11,637.41	11,734.33	0.00	0.00	0.00	
16,200.00	90.00	89.91	7,283.00	1,539.26	11,737.41	11,833.81	0.00	0.00	0.00	
16,300.00	90.00	89.91	7,283.00	1,539.42	11,837.41	11,933.28	0.00	0.00	0.00	
16,400.00	90.00	89.91	7,283.00	1,539.59	11,937.41	12,032.76	0.00	0.00	0.00	
16,500.00	90.00	89.91	7,283.00	1,539.76	12,037.41	12,132.24	0.00	0.00	0.00	
16,600.00	90.00	89.91	7,283.00	1,539.92	12,137.41	12,231.71	0.00	0.00	0.00	
16,700.00	90.00	89.91	7,283.00	1,540.09	12,237.41	12,331.19	0.00	0.00	0.00	
16,800.00	90.00	89.91	7,283.00	1,540.25	12,337.41	12,430.66	0.00	0.00	0.00	
16,900.00	90.00	89.91	7,283.00	1,540.42	12,437.41	12,530.14	0.00	0.00	0.00	
17,000.00	90.00	89.91	7,283.00	1,540.58	12,537.41	12,629.62	0.00	0.00	0.00	
17,100.00	90.00	89.91	7,283.00	1,540.75	12,637.41	12,729.09	0.00	0.00	0.00	
17,200.00	90.00	89.91	7,283.00	1,540.91	12,737.41	12,828.57	0.00	0.00	0.00	
17,300.00	90.00	89.91	7,283.00	1,541.08	12,837.41	12,928.04	0.00	0.00	0.00	

# Civitas Resources

## Planning Report

<b>Database:</b>	EDM	<b>Local Co-ordinate Reference:</b>	Well JESSER EAST 3E-20-02
<b>Company:</b>	EXTRACTION OIL & GAS	<b>TVD Reference:</b>	KB 25' @ 5136.00usft
<b>Project:</b>	WELD COUNTY	<b>MD Reference:</b>	KB 25' @ 5136.00usft
<b>Site:</b>	Sec 3-T4N-R68W	<b>North Reference:</b>	True
<b>Well:</b>	JESSER EAST 3E-20-02	<b>Survey Calculation Method:</b>	Minimum Curvature
<b>Wellbore:</b>	OWB		
<b>Design:</b>	PROPOSAL 1		

Planned Survey									
Measured Depth (usft)	Inclination (°)	Azimuth (°)	Vertical Depth (usft)	+N/-S (usft)	+E/-W (usft)	Vertical Section (usft)	Dogleg Rate (°/100ft)	Build Rate (°/100ft)	Turn Rate (°/100ft)
17,400.00	90.00	89.91	7,283.00	1,541.24	12,937.41	13,027.52	0.00	0.00	0.00
17,500.00	90.00	89.91	7,283.00	1,541.41	13,037.41	13,127.00	0.00	0.00	0.00
17,600.00	90.00	89.91	7,283.00	1,541.57	13,137.41	13,226.47	0.00	0.00	0.00
17,700.00	90.00	89.91	7,283.00	1,541.74	13,237.41	13,325.95	0.00	0.00	0.00
17,800.00	90.00	89.91	7,283.00	1,541.91	13,337.41	13,425.42	0.00	0.00	0.00
17,900.00	90.00	89.91	7,283.00	1,542.07	13,437.41	13,524.90	0.00	0.00	0.00
18,000.00	90.00	89.91	7,283.00	1,542.24	13,537.41	13,624.38	0.00	0.00	0.00
18,100.00	90.00	89.91	7,283.00	1,542.40	13,637.41	13,723.85	0.00	0.00	0.00
18,200.00	90.00	89.91	7,283.00	1,542.57	13,737.41	13,823.33	0.00	0.00	0.00
18,300.00	90.00	89.91	7,283.00	1,542.73	13,837.41	13,922.80	0.00	0.00	0.00
18,400.00	90.00	89.91	7,283.00	1,542.90	13,937.41	14,022.28	0.00	0.00	0.00
18,500.00	90.00	89.91	7,283.00	1,543.06	14,037.41	14,121.76	0.00	0.00	0.00
18,600.00	90.00	89.91	7,283.00	1,543.23	14,137.41	14,221.23	0.00	0.00	0.00
18,700.00	90.00	89.91	7,283.00	1,543.39	14,237.41	14,320.71	0.00	0.00	0.00
18,800.00	90.00	89.91	7,283.00	1,543.56	14,337.41	14,420.18	0.00	0.00	0.00
18,900.00	90.00	89.91	7,283.00	1,543.72	14,437.41	14,519.66	0.00	0.00	0.00
19,000.00	90.00	89.91	7,283.00	1,543.89	14,537.41	14,619.14	0.00	0.00	0.00
19,100.00	90.00	89.91	7,283.00	1,544.06	14,637.41	14,718.61	0.00	0.00	0.00
19,200.00	90.00	89.91	7,283.00	1,544.22	14,737.41	14,818.09	0.00	0.00	0.00
19,247.68	90.00	89.91	7,283.00	1,544.30	14,785.08	14,865.51	0.00	0.00	0.00
TD at 19247.68									

Design Targets									
Target Name	Dip Angle (°)	Dip Dir. (°)	TVD (usft)	+N/-S (usft)	+E/-W (usft)	Northing (usft)	Easting (usft)	Latitude	Longitude
- hit/miss target									
- Shape									
PBHL-JESSER EAST 3E-20-02	0.00	0.00	7,283.00	1,544.30	14,785.08	1,369,353.18	3,155,087.67	40.345940°N	104.943593°W
- plan hits target center									
- Point									
LP-JESSER EAST 3E-20-02	0.00	0.00	7,283.00	1,527.16	4,419.03	1,369,277.20	3,144,721.88	40.345904°N	104.980783°W
- plan hits target center									
- Point									



# Civitas Resources

## Planning Report

<b>Database:</b>	EDM	<b>Local Co-ordinate Reference:</b>	Well JESSER EAST 3E-20-02
<b>Company:</b>	EXTRACTION OIL & GAS	<b>TVD Reference:</b>	KB 25' @ 5136.00usft
<b>Project:</b>	WELD COUNTY	<b>MD Reference:</b>	KB 25' @ 5136.00usft
<b>Site:</b>	Sec 3-T4N-R68W	<b>North Reference:</b>	True
<b>Well:</b>	JESSER EAST 3E-20-02	<b>Survey Calculation Method:</b>	Minimum Curvature
<b>Wellbore:</b>	OWB		
<b>Design:</b>	PROPOSAL 1		

Formations						
Measured Depth (usft)	Vertical Depth (usft)	Name	Lithology	Dip (°)	Dip Direction (°)	
24.00	24.00	Alluvium				
104.00	104.00	Pierre Formation				
293.02	293.00	Upper Pierre aquifer				
1,097.62	1,083.00	Base of Upper Pierre aquifer				
4,022.66	3,533.00	Larimer ("Parkman") sandstone				
4,427.43	3,863.00	Pierre Formation				
4,635.95	4,033.00	Terry ("Sussex") sandstone				
4,850.60	4,208.00	Pierre Formation				
5,232.07	4,519.00	Hygiene ("Shannon") sandstone				
5,371.90	4,633.00	Pierre Formation				
8,174.63	6,918.00	Sharon Springs Member				
8,217.56	6,953.00	Niobrara Formation				
8,709.19	7,258.00	Fort Hays limestone				
8,881.61	7,283.00	Codell sandstone				

Plan Annotations					
Measured Depth (usft)	Vertical Depth (usft)	Local Coordinates			
		+N/-S (usft)	+E/-W (usft)	Comment	
200.00	200.00	0.00	0.00	Start Build 2.00	
1,969.27	1,858.92	184.37	496.04	Start 6341.31 hold at 1969.27 MD	
8,310.57	7,028.83	1,463.74	3,938.05	Start DLS 10.00 TFO 24.40	
8,881.61	7,283.00	1,527.16	4,419.03	Start 10366.07 hold at 8881.61 MD	
19,247.68	7,283.00	1,544.30	14,785.08	TD at 19247.68	