

EXTRACTION OIL & GAS

WELD COUNTY

Sec 3-T4N-R68W

JESSER EAST 3E-20-01

OWB

Plan: PROPOSAL 1

Standard Planning Report

28 November, 2023



Project: WELD COUNTY
Site: Sec 3-T4N-R68W
Well: JESSER EAST 3E-20-01
Wellbore: OWB
Design: PROPOSAL 1

PROJECT DETAILS: WELD COUNTY
Geodetic System: US State Plane 1983
Datum: North American Datum 1983
Ellipsoid: GRS 1980
Zone: Colorado Northern Zone
System Datum: Mean Sea Level



Azimuths to True North
Magnetic North: 7.73°

Magnetic Field
Strength: 51652.6nT
Dip Angle: 66.48°
Date: 10/11/2023
Model: IGRF2020

WELL DETAILS: JESSER EAST 3E-20-01

			5111.00				
	+N/-S	+E/-W	Northing	Easting	Latitude	Longitude	Slot
	0.00	0.00	1367724.50	3140291.52	40.341712°N	104.996709°W	

SECTION DETAILS

Sec	MD	Inc	Azi	TVD	+N/-S	+E/-W	Dleg	TFace	VSect	Target
1	0.00	0.00	0.00	0.00	0.00	0.00	0.00	0.00	0.00	
2	100.00	0.00	0.00	100.00	0.00	0.00	0.00	0.00	0.00	
3	1991.28	37.83	63.44	1856.86	269.14	538.43	2.00	63.44	569.89	
4	8133.45	37.83	63.44	6708.44	1953.28	3907.70	0.00	0.00	4136.07	
5	8701.17	90.00	90.12	6953.00	2037.53	4387.16	10.00	32.46	4622.51	LP-JESSER EAST 3E-20-01
6	19073.74	90.00	90.12	6953.00	2015.68	14759.72	0.00	0.00	14896.72	PBHL-JESSER EAST 3E-20-01

ANNOTATIONS

MD	Inc	Azi	TVD	+N/-S	+E/-W	VSect	Departure	Annotation
100.00	0.00	0.00	100.00	0.00	0.00	0.00	0.00	Start Build 2.00
1991.28	37.83	63.44	1856.86	269.14	538.43	569.89	601.94	Start 6142.17 hold at 1991.28 MD
8133.44	37.83	63.44	6708.44	1953.28	3907.70	4136.06	4368.69	Start DLS 10.00 TFO 32.46
8701.16	90.00	90.12	6953.00	2037.53	4387.16	4622.51	4859.24	Start 10372.58 hold at 8701.16 MD
19073.74	90.00	90.12	6953.00	2015.68	14759.71	14896.72	15231.82	TD at 19073.74

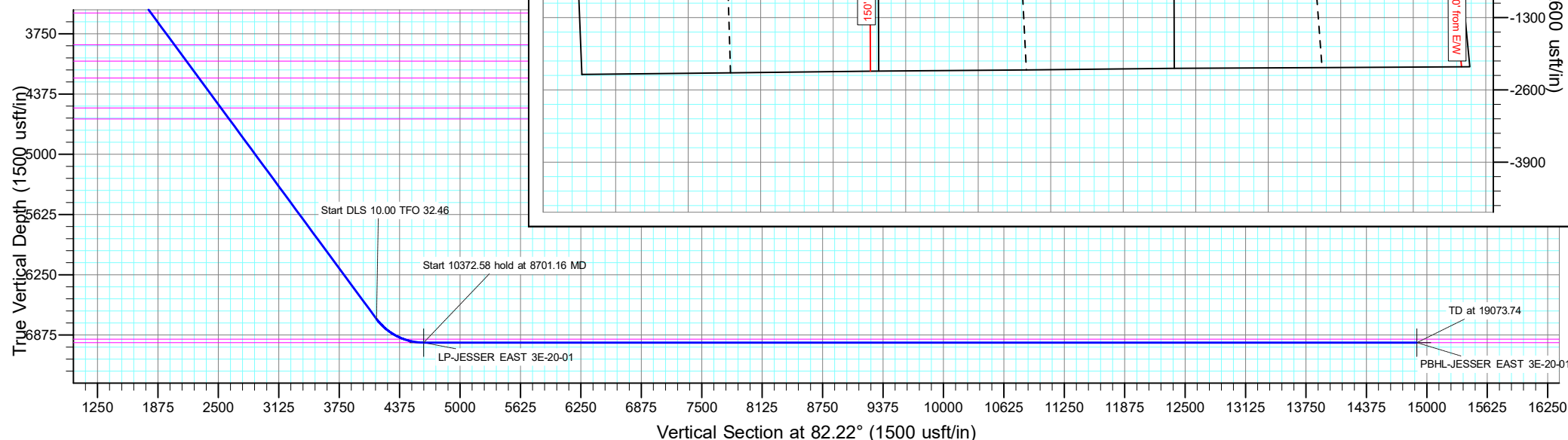
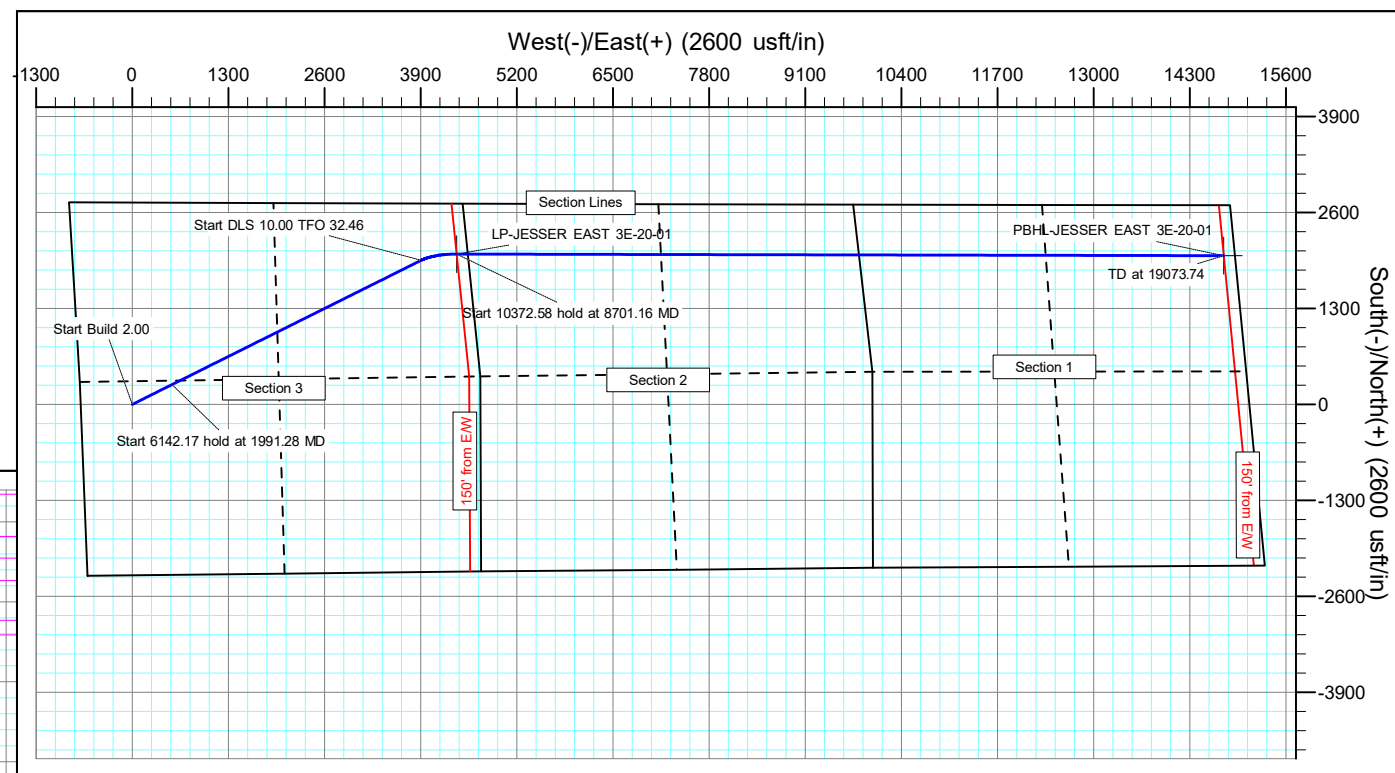
DESIGN TARGET DETAILS

Name	TVD	+N/-S	+E/-W	Northing	Easting	Latitude	Longitude	Shape
LP-JESSER EAST 3E-20-01 6953.00	2037.53	4387.16	1369786.89	3144667.05	40.347304°N	104.980969°W		Point
- plan hits target center								
PBHL-JESSER EAST 3E-20-01 6953.00	2015.68	14759.72	1369823.92	3155039.56	40.347233°N	104.943755°W		Point
- plan hits target center								

FORMATION TOP DETAILS

TVDPath	MDPath	Formation
24.00	24.00	Alluvium
104.00	104.00	Pierre Formation
293.00	293.15	Upper Pierre aquifer
1083.00	1103.39	Base of Upper Pierre aquifer
3533.00	4113.30	Larimer ("Parkman") sandstone
3863.00	4531.08	Pierre Formation
4033.00	4746.30	Terry ("Sussex") sandstone
4208.00	4967.85	Pierre Formation
4519.00	5361.58	Hygiene ("Shannon") sandstone
4633.00	5505.91	Pierre Formation
6918.00	8493.94	Sharon Springs Member
6953.00	8701.16	Niobrara Formation

SHL:
2315' FSL, 696' FWL
Sec 3-T4N-R68W
LP*
683' FNL, 150' FEL
Sec 3-T4N-R68W
BHL:
683' FNL, 150' FEL
Sec 1-T4N-R68W



Civitas Resources

Planning Report

Database:	EDM	Local Co-ordinate Reference:	Well JESSER EAST 3E-20-01
Company:	EXTRACTION OIL & GAS	TVD Reference:	KB 25' @ 5136.00usft
Project:	WELD COUNTY	MD Reference:	KB 25' @ 5136.00usft
Site:	Sec 3-T4N-R68W	North Reference:	True
Well:	JESSER EAST 3E-20-01	Survey Calculation Method:	Minimum Curvature
Wellbore:	OWB		
Design:	PROPOSAL 1		

Project	WELD COUNTY		
Map System:	US State Plane 1983	System Datum:	Mean Sea Level
Geo Datum:	North American Datum 1983		
Map Zone:	Colorado Northern Zone		

Site		Sec 3-T4N-R68W			
Site Position:		Northing:	1,365,399.13 usft	Latitude:	40.335338°N
From:	Lat/Long	Easting:	3,139,700.88 usft	Longitude:	104.998875°W
Position Uncertainty:	0.00 usft	Slot Radius:	13.200 in	Grid Convergence:	0.32 °

Well	JESSER EAST 3E-20-01					
Well Position	+N/-S	2,321.99 usft	Northing:	1,367,724.50 usft	Latitude:	40.341712°N
	+E/-W	603.77 usft	Easting:	3,140,291.52 usft	Longitude:	104.996709°W
Position Uncertainty		0.00 usft	Wellhead Elevation:		Ground Level:	5,111.00 usft

Wellbore	OWB				
Magnetics	Model Name	Sample Date	Declination (°)	Dip Angle (°)	Field Strength (nT)
	IGRF2020	10/11/2023	7.73	66.48	51,652.59112710

Design	PROPOSAL 1			
Audit Notes:				
Version:	Phase:	PROTOTYPE	Tie On Depth:	0.00
Vertical Section:	Depth From (TVD) (usft)	+N/-S (usft)	+E/-W (usft)	Direction (°)
	0.00	0.00	0.00	82.22

Plan Survey Tool Program	Date	10/11/2023		
Depth From (usft)	Depth To (usft)	Survey (Wellbore)	Tool Name	Remarks
1	0.00	19,073.74	PROPOSAL 1 (OWB)	MWD OWSG
				OWSG MWD - Standard

Plan Sections										
Measured Depth (usft)	Inclination (°)	Azimuth (°)	Vertical Depth (usft)	+N/-S (usft)	+E/-W (usft)	Dogleg Rate (°/100ft)	Build Rate (°/100ft)	Turn Rate (°/100ft)	TFO (°)	Target
0.00	0.00	0.00	0.00	0.00	0.00	0.00	0.00	0.00	0.00	
100.00	0.00	0.00	100.00	0.00	0.00	0.00	0.00	0.00	0.00	
1,991.28	37.83	63.44	1,856.86	269.14	538.43	2.00	2.00	0.00	63.44	
8,133.45	37.83	63.44	6,708.44	1,953.28	3,907.70	0.00	0.00	0.00	0.00	
8,701.17	90.00	90.12	6,953.00	2,037.53	4,387.16	10.00	9.19	4.70	32.46	LP-JESSER EAST 3E
19,073.74	90.00	90.12	6,953.00	2,015.68	14,759.72	0.00	0.00	0.00	0.00	PBHL-JESSER EAST

Civitas Resources

Planning Report

Database:	EDM	Local Co-ordinate Reference:	Well JESSER EAST 3E-20-01
Company:	EXTRACTION OIL & GAS	TVD Reference:	KB 25' @ 5136.00usft
Project:	WELD COUNTY	MD Reference:	KB 25' @ 5136.00usft
Site:	Sec 3-T4N-R68W	North Reference:	True
Well:	JESSER EAST 3E-20-01	Survey Calculation Method:	Minimum Curvature
Wellbore:	OWB		
Design:	PROPOSAL 1		

Planned Survey									
Measured Depth (usft)	Inclination (°)	Azimuth (°)	Vertical Depth (usft)	+N/-S (usft)	+E/-W (usft)	Vertical Section (usft)	Dogleg Rate (°/100ft)	Build Rate (°/100ft)	Turn Rate (°/100ft)
0.00	0.00	0.00	0.00	0.00	0.00	0.00	0.00	0.00	0.00
24.00	0.00	0.00	24.00	0.00	0.00	0.00	0.00	0.00	0.00
Alluvium									
100.00	0.00	0.00	100.00	0.00	0.00	0.00	0.00	0.00	0.00
Start Build 2.00									
104.00	0.08	63.44	104.00	0.00	0.00	0.00	2.00	2.00	0.00
Pierre Formation									
200.00	2.00	63.44	199.98	0.78	1.56	1.65	2.00	2.00	0.00
293.15	3.86	63.44	293.00	2.91	5.82	6.16	2.00	2.00	0.00
Upper Pierre aquifer									
300.00	4.00	63.44	299.84	3.12	6.24	6.61	2.00	2.00	0.00
400.00	6.00	63.44	399.45	7.02	14.04	14.86	2.00	2.00	0.00
500.00	8.00	63.44	498.70	12.47	24.94	26.40	2.00	2.00	0.00
600.00	10.00	63.44	597.47	19.46	38.93	41.21	2.00	2.00	0.00
700.00	12.00	63.44	695.62	27.99	56.00	59.27	2.00	2.00	0.00
800.00	14.00	63.44	793.06	38.05	76.12	80.57	2.00	2.00	0.00
900.00	16.00	63.44	889.64	49.62	99.27	105.07	2.00	2.00	0.00
1,000.00	18.00	63.44	985.27	62.69	125.42	132.75	2.00	2.00	0.00
1,100.00	20.00	63.44	1,079.82	77.25	154.54	163.57	2.00	2.00	0.00
1,103.39	20.07	63.44	1,083.00	77.77	155.58	164.67	2.00	2.00	0.00
Base of Upper Pierre aquifer									
1,200.00	22.00	63.44	1,173.17	93.27	186.59	197.50	2.00	2.00	0.00
1,300.00	24.00	63.44	1,265.21	110.74	221.54	234.49	2.00	2.00	0.00
1,400.00	26.00	63.44	1,355.84	129.63	259.34	274.50	2.00	2.00	0.00
1,500.00	28.00	63.44	1,444.94	149.93	299.95	317.48	2.00	2.00	0.00
1,600.00	30.00	63.44	1,532.39	171.60	343.31	363.37	2.00	2.00	0.00
1,700.00	32.00	63.44	1,618.11	194.63	389.38	412.13	2.00	2.00	0.00
1,800.00	34.00	63.44	1,701.97	218.98	438.09	463.69	2.00	2.00	0.00
1,900.00	36.00	63.44	1,783.88	244.63	489.39	517.99	2.00	2.00	0.00
1,991.28	37.83	63.44	1,856.86	269.14	538.43	569.89	2.00	2.00	0.00
Start 6142.17 hold at 1991.28 MD									
2,000.00	37.83	63.44	1,863.75	271.53	543.21	574.96	0.00	0.00	0.00
2,100.00	37.83	63.44	1,942.74	298.95	598.07	633.02	0.00	0.00	0.00
2,200.00	37.83	63.44	2,021.72	326.37	652.92	691.08	0.00	0.00	0.00
2,300.00	37.83	63.44	2,100.71	353.79	707.78	749.14	0.00	0.00	0.00
2,400.00	37.83	63.44	2,179.70	381.21	762.63	807.20	0.00	0.00	0.00
2,500.00	37.83	63.44	2,258.69	408.62	817.49	865.26	0.00	0.00	0.00
2,600.00	37.83	63.44	2,337.68	436.04	872.34	923.32	0.00	0.00	0.00
2,700.00	37.83	63.44	2,416.66	463.46	927.20	981.38	0.00	0.00	0.00
2,800.00	37.83	63.44	2,495.65	490.88	982.05	1,039.44	0.00	0.00	0.00
2,900.00	37.83	63.44	2,574.64	518.30	1,036.91	1,097.50	0.00	0.00	0.00
3,000.00	37.83	63.44	2,653.63	545.72	1,091.76	1,155.56	0.00	0.00	0.00
3,100.00	37.83	63.44	2,732.62	573.14	1,146.62	1,213.62	0.00	0.00	0.00
3,200.00	37.83	63.44	2,811.61	600.56	1,201.47	1,271.68	0.00	0.00	0.00
3,300.00	37.83	63.44	2,890.59	627.98	1,256.33	1,329.74	0.00	0.00	0.00
3,400.00	37.83	63.44	2,969.58	655.40	1,311.18	1,387.80	0.00	0.00	0.00
3,500.00	37.83	63.44	3,048.57	682.82	1,366.04	1,445.86	0.00	0.00	0.00
3,600.00	37.83	63.44	3,127.56	710.24	1,420.89	1,503.93	0.00	0.00	0.00
3,700.00	37.83	63.44	3,206.55	737.66	1,475.75	1,561.99	0.00	0.00	0.00
3,800.00	37.83	63.44	3,285.53	765.08	1,530.60	1,620.05	0.00	0.00	0.00
3,900.00	37.83	63.44	3,364.52	792.50	1,585.46	1,678.11	0.00	0.00	0.00
4,000.00	37.83	63.44	3,443.51	819.92	1,640.31	1,736.17	0.00	0.00	0.00
4,100.00	37.83	63.44	3,522.50	847.34	1,695.16	1,794.23	0.00	0.00	0.00

Civitas Resources

Planning Report

Database:	EDM	Local Co-ordinate Reference:	Well JESSER EAST 3E-20-01
Company:	EXTRACTION OIL & GAS	TVD Reference:	KB 25' @ 5136.00usft
Project:	WELD COUNTY	MD Reference:	KB 25' @ 5136.00usft
Site:	Sec 3-T4N-R68W	North Reference:	True
Well:	JESSER EAST 3E-20-01	Survey Calculation Method:	Minimum Curvature
Wellbore:	OWB		
Design:	PROPOSAL 1		

Planned Survey										
Measured Depth (usft)	Inclination (°)	Azimuth (°)	Vertical Depth (usft)	+N/-S (usft)	+E/-W (usft)	Vertical Section (usft)	Dogleg Rate (°/100ft)	Build Rate (°/100ft)	Turn Rate (°/100ft)	
4,113.30	37.83	63.44	3,533.00	850.98	1,702.46	1,801.95	0.00	0.00	0.00	
Larimer ("Parkman") sandstone										
4,200.00	37.83	63.44	3,601.49	874.75	1,750.02	1,852.29	0.00	0.00	0.00	
4,300.00	37.83	63.44	3,680.47	902.17	1,804.87	1,910.35	0.00	0.00	0.00	
4,400.00	37.83	63.44	3,759.46	929.59	1,859.73	1,968.41	0.00	0.00	0.00	
4,500.00	37.83	63.44	3,838.45	957.01	1,914.58	2,026.47	0.00	0.00	0.00	
4,531.08	37.83	63.44	3,863.00	965.54	1,931.63	2,044.52	0.00	0.00	0.00	
Pierre Formation										
4,600.00	37.83	63.44	3,917.44	984.43	1,969.44	2,084.53	0.00	0.00	0.00	
4,700.00	37.83	63.44	3,996.43	1,011.85	2,024.29	2,142.59	0.00	0.00	0.00	
4,746.30	37.83	63.44	4,033.00	1,024.55	2,049.69	2,169.47	0.00	0.00	0.00	
Terry ("Sussex") sandstone										
4,800.00	37.83	63.44	4,075.41	1,039.27	2,079.15	2,200.65	0.00	0.00	0.00	
4,900.00	37.83	63.44	4,154.40	1,066.69	2,134.00	2,258.71	0.00	0.00	0.00	
4,967.85	37.83	63.44	4,208.00	1,085.30	2,171.23	2,298.11	0.00	0.00	0.00	
Pierre Formation										
5,000.00	37.83	63.44	4,233.39	1,094.11	2,188.86	2,316.77	0.00	0.00	0.00	
5,100.00	37.83	63.44	4,312.38	1,121.53	2,243.71	2,374.83	0.00	0.00	0.00	
5,200.00	37.83	63.44	4,391.37	1,148.95	2,298.57	2,432.89	0.00	0.00	0.00	
5,300.00	37.83	63.44	4,470.36	1,176.37	2,353.42	2,490.95	0.00	0.00	0.00	
5,361.59	37.83	63.44	4,519.00	1,193.25	2,387.21	2,526.71	0.00	0.00	0.00	
Hygiene ("Shannon") sandstone										
5,400.00	37.83	63.44	4,549.34	1,203.79	2,408.28	2,549.01	0.00	0.00	0.00	
5,500.00	37.83	63.44	4,628.33	1,231.21	2,463.13	2,607.07	0.00	0.00	0.00	
5,505.91	37.83	63.44	4,633.00	1,232.83	2,466.37	2,610.51	0.00	0.00	0.00	
Pierre Formation										
5,600.00	37.83	63.44	4,707.32	1,258.63	2,517.99	2,665.14	0.00	0.00	0.00	
5,700.00	37.83	63.44	4,786.31	1,286.05	2,572.84	2,723.20	0.00	0.00	0.00	
5,800.00	37.83	63.44	4,865.30	1,313.47	2,627.70	2,781.26	0.00	0.00	0.00	
5,900.00	37.83	63.44	4,944.28	1,340.89	2,682.55	2,839.32	0.00	0.00	0.00	
6,000.00	37.83	63.44	5,023.27	1,368.30	2,737.41	2,897.38	0.00	0.00	0.00	
6,100.00	37.83	63.44	5,102.26	1,395.72	2,792.26	2,955.44	0.00	0.00	0.00	
6,200.00	37.83	63.44	5,181.25	1,423.14	2,847.12	3,013.50	0.00	0.00	0.00	
6,300.00	37.83	63.44	5,260.24	1,450.56	2,901.97	3,071.56	0.00	0.00	0.00	
6,400.00	37.83	63.44	5,339.22	1,477.98	2,956.83	3,129.62	0.00	0.00	0.00	
6,500.00	37.83	63.44	5,418.21	1,505.40	3,011.68	3,187.68	0.00	0.00	0.00	
6,600.00	37.83	63.44	5,497.20	1,532.82	3,066.54	3,245.74	0.00	0.00	0.00	
6,700.00	37.83	63.44	5,576.19	1,560.24	3,121.39	3,303.80	0.00	0.00	0.00	
6,800.00	37.83	63.44	5,655.18	1,587.66	3,176.25	3,361.86	0.00	0.00	0.00	
6,900.00	37.83	63.44	5,734.17	1,615.08	3,231.10	3,419.92	0.00	0.00	0.00	
7,000.00	37.83	63.44	5,813.15	1,642.50	3,285.96	3,477.98	0.00	0.00	0.00	
7,100.00	37.83	63.44	5,892.14	1,669.92	3,340.81	3,536.04	0.00	0.00	0.00	
7,200.00	37.83	63.44	5,971.13	1,697.34	3,395.67	3,594.10	0.00	0.00	0.00	
7,300.00	37.83	63.44	6,050.12	1,724.76	3,450.52	3,652.16	0.00	0.00	0.00	
7,400.00	37.83	63.44	6,129.11	1,752.18	3,505.37	3,710.22	0.00	0.00	0.00	
7,500.00	37.83	63.44	6,208.09	1,779.60	3,560.23	3,768.28	0.00	0.00	0.00	
7,600.00	37.83	63.44	6,287.08	1,807.02	3,615.08	3,826.34	0.00	0.00	0.00	
7,700.00	37.83	63.44	6,366.07	1,834.43	3,669.94	3,884.41	0.00	0.00	0.00	
7,800.00	37.83	63.44	6,445.06	1,861.85	3,724.79	3,942.47	0.00	0.00	0.00	
7,900.00	37.83	63.44	6,524.05	1,889.27	3,779.65	4,000.53	0.00	0.00	0.00	
8,000.00	37.83	63.44	6,603.03	1,916.69	3,834.50	4,058.59	0.00	0.00	0.00	
8,100.00	37.83	63.44	6,682.02	1,944.11	3,889.36	4,116.65	0.00	0.00	0.00	
8,133.44	37.83	63.44	6,708.44	1,953.28	3,907.70	4,136.07	0.00	0.00	0.00	

Civitas Resources

Planning Report

Database:	EDM	Local Co-ordinate Reference:	Well JESSER EAST 3E-20-01
Company:	EXTRACTION OIL & GAS	TVD Reference:	KB 25' @ 5136.00usft
Project:	WELD COUNTY	MD Reference:	KB 25' @ 5136.00usft
Site:	Sec 3-T4N-R68W	North Reference:	True
Well:	JESSER EAST 3E-20-01	Survey Calculation Method:	Minimum Curvature
Wellbore:	OWB		
Design:	PROPOSAL 1		

Planned Survey									
Measured Depth (usft)	Inclination (°)	Azimuth (°)	Vertical Depth (usft)	+N/-S (usft)	+E/-W (usft)	Vertical Section (usft)	Dogleg Rate (°/100ft)	Build Rate (°/100ft)	Turn Rate (°/100ft)
Start DLS 10.00 TFO 32.46									
8,150.00	39.23	64.85	6,721.39	1,957.78	3,916.98	4,145.87	10.00	8.49	8.49
8,200.00	43.57	68.62	6,758.89	1,970.79	3,947.36	4,177.72	10.00	8.67	7.55
8,250.00	48.01	71.83	6,793.76	1,982.87	3,981.08	4,212.77	10.00	8.88	6.42
8,300.00	52.52	74.62	6,825.72	1,993.93	4,017.89	4,250.73	10.00	9.04	5.58
8,350.00	57.10	77.09	6,854.52	2,003.89	4,057.50	4,291.33	10.00	9.15	4.94
8,400.00	61.72	79.31	6,879.96	2,012.67	4,099.62	4,334.25	10.00	9.24	4.45
8,450.00	66.37	81.35	6,901.84	2,020.21	4,143.93	4,379.17	10.00	9.31	4.08
8,493.95	70.48	83.02	6,918.00	2,025.75	4,184.40	4,420.03	10.00	9.35	3.81
Sharon Springs Member									
8,500.00	71.05	83.25	6,919.99	2,026.44	4,190.08	4,425.74	10.00	9.37	3.69
8,550.00	75.74	85.04	6,934.28	2,031.31	4,237.73	4,473.61	10.00	9.39	3.59
8,600.00	80.45	86.76	6,944.59	2,034.81	4,286.51	4,522.42	10.00	9.42	3.44
8,650.00	85.17	88.43	6,950.84	2,036.88	4,336.06	4,571.79	10.00	9.43	3.35
8,701.17	90.00	90.12	6,953.00	2,037.53	4,387.16	4,622.51	10.00	9.44	3.30
Start 10372.58 hold at 8701.16 MD - Niobrara Formation									
8,800.00	90.00	90.12	6,953.00	2,037.32	4,485.99	4,720.41	0.00	0.00	0.00
8,900.00	90.00	90.12	6,953.00	2,037.11	4,585.99	4,819.46	0.00	0.00	0.00
9,000.00	90.00	90.12	6,953.00	2,036.90	4,685.99	4,918.51	0.00	0.00	0.00
9,100.00	90.00	90.12	6,953.00	2,036.69	4,785.99	5,017.56	0.00	0.00	0.00
9,200.00	90.00	90.12	6,953.00	2,036.48	4,885.99	5,116.61	0.00	0.00	0.00
9,300.00	90.00	90.12	6,953.00	2,036.26	4,985.99	5,215.67	0.00	0.00	0.00
9,400.00	90.00	90.12	6,953.00	2,036.05	5,085.99	5,314.72	0.00	0.00	0.00
9,500.00	90.00	90.12	6,953.00	2,035.84	5,185.99	5,413.77	0.00	0.00	0.00
9,600.00	90.00	90.12	6,953.00	2,035.63	5,285.99	5,512.82	0.00	0.00	0.00
9,700.00	90.00	90.12	6,953.00	2,035.42	5,385.99	5,611.87	0.00	0.00	0.00
9,800.00	90.00	90.12	6,953.00	2,035.21	5,485.99	5,710.92	0.00	0.00	0.00
9,900.00	90.00	90.12	6,953.00	2,035.00	5,585.99	5,809.98	0.00	0.00	0.00
10,000.00	90.00	90.12	6,953.00	2,034.79	5,685.99	5,909.03	0.00	0.00	0.00
10,100.00	90.00	90.12	6,953.00	2,034.58	5,785.99	6,008.08	0.00	0.00	0.00
10,200.00	90.00	90.12	6,953.00	2,034.37	5,885.99	6,107.13	0.00	0.00	0.00
10,300.00	90.00	90.12	6,953.00	2,034.16	5,985.99	6,206.18	0.00	0.00	0.00
10,400.00	90.00	90.12	6,953.00	2,033.95	6,085.99	6,305.23	0.00	0.00	0.00
10,500.00	90.00	90.12	6,953.00	2,033.74	6,185.99	6,404.29	0.00	0.00	0.00
10,600.00	90.00	90.12	6,953.00	2,033.53	6,285.99	6,503.34	0.00	0.00	0.00
10,700.00	90.00	90.12	6,953.00	2,033.32	6,385.99	6,602.39	0.00	0.00	0.00
10,800.00	90.00	90.12	6,953.00	2,033.11	6,485.99	6,701.44	0.00	0.00	0.00
10,900.00	90.00	90.12	6,953.00	2,032.89	6,585.99	6,800.49	0.00	0.00	0.00
11,000.00	90.00	90.12	6,953.00	2,032.68	6,685.99	6,899.54	0.00	0.00	0.00
11,100.00	90.00	90.12	6,953.00	2,032.47	6,785.99	6,998.60	0.00	0.00	0.00
11,200.00	90.00	90.12	6,953.00	2,032.26	6,885.99	7,097.65	0.00	0.00	0.00
11,300.00	90.00	90.12	6,953.00	2,032.05	6,985.99	7,196.70	0.00	0.00	0.00
11,400.00	90.00	90.12	6,953.00	2,031.84	7,085.99	7,295.75	0.00	0.00	0.00
11,500.00	90.00	90.12	6,953.00	2,031.63	7,185.99	7,394.80	0.00	0.00	0.00
11,600.00	90.00	90.12	6,953.00	2,031.42	7,285.99	7,493.85	0.00	0.00	0.00
11,700.00	90.00	90.12	6,953.00	2,031.21	7,385.99	7,592.90	0.00	0.00	0.00
11,800.00	90.00	90.12	6,953.00	2,031.00	7,485.99	7,691.96	0.00	0.00	0.00
11,900.00	90.00	90.12	6,953.00	2,030.79	7,585.99	7,791.01	0.00	0.00	0.00
12,000.00	90.00	90.12	6,953.00	2,030.58	7,685.99	7,890.06	0.00	0.00	0.00
12,100.00	90.00	90.12	6,953.00	2,030.37	7,785.99	7,989.11	0.00	0.00	0.00
12,200.00	90.00	90.12	6,953.00	2,030.16	7,885.99	8,088.16	0.00	0.00	0.00
12,300.00	90.00	90.12	6,953.00	2,029.95	7,985.99	8,187.21	0.00	0.00	0.00
12,400.00	90.00	90.12	6,953.00	2,029.74	8,085.99	8,286.27	0.00	0.00	0.00

Civitas Resources

Planning Report

Database:	EDM	Local Co-ordinate Reference:	Well JESSER EAST 3E-20-01
Company:	EXTRACTION OIL & GAS	TVD Reference:	KB 25' @ 5136.00usft
Project:	WELD COUNTY	MD Reference:	KB 25' @ 5136.00usft
Site:	Sec 3-T4N-R68W	North Reference:	True
Well:	JESSER EAST 3E-20-01	Survey Calculation Method:	Minimum Curvature
Wellbore:	OWB		
Design:	PROPOSAL 1		

Planned Survey										
Measured Depth (usft)	Inclination (°)	Azimuth (°)	Vertical Depth (usft)	+N/-S (usft)	+E/-W (usft)	Vertical Section (usft)	Dogleg Rate (°/100ft)	Build Rate (°/100ft)	Turn Rate (°/100ft)	
12,500.00	90.00	90.12	6,953.00	2,029.52	8,185.99	8,385.32	0.00	0.00	0.00	
12,600.00	90.00	90.12	6,953.00	2,029.31	8,285.99	8,484.37	0.00	0.00	0.00	
12,700.00	90.00	90.12	6,953.00	2,029.10	8,385.99	8,583.42	0.00	0.00	0.00	
12,800.00	90.00	90.12	6,953.00	2,028.89	8,485.99	8,682.47	0.00	0.00	0.00	
12,900.00	90.00	90.12	6,953.00	2,028.68	8,585.99	8,781.52	0.00	0.00	0.00	
13,000.00	90.00	90.12	6,953.00	2,028.47	8,685.99	8,880.58	0.00	0.00	0.00	
13,100.00	90.00	90.12	6,953.00	2,028.26	8,785.99	8,979.63	0.00	0.00	0.00	
13,200.00	90.00	90.12	6,953.00	2,028.05	8,885.99	9,078.68	0.00	0.00	0.00	
13,300.00	90.00	90.12	6,953.00	2,027.84	8,985.98	9,177.73	0.00	0.00	0.00	
13,400.00	90.00	90.12	6,953.00	2,027.63	9,085.98	9,276.78	0.00	0.00	0.00	
13,500.00	90.00	90.12	6,953.00	2,027.42	9,185.98	9,375.83	0.00	0.00	0.00	
13,600.00	90.00	90.12	6,953.00	2,027.21	9,285.98	9,474.89	0.00	0.00	0.00	
13,700.00	90.00	90.12	6,953.00	2,027.00	9,385.98	9,573.94	0.00	0.00	0.00	
13,800.00	90.00	90.12	6,953.00	2,026.79	9,485.98	9,672.99	0.00	0.00	0.00	
13,900.00	90.00	90.12	6,953.00	2,026.58	9,585.98	9,772.04	0.00	0.00	0.00	
14,000.00	90.00	90.12	6,953.00	2,026.37	9,685.98	9,871.09	0.00	0.00	0.00	
14,100.00	90.00	90.12	6,953.00	2,026.15	9,785.98	9,970.14	0.00	0.00	0.00	
14,200.00	90.00	90.12	6,953.00	2,025.94	9,885.98	10,069.20	0.00	0.00	0.00	
14,300.00	90.00	90.12	6,953.00	2,025.73	9,985.98	10,168.25	0.00	0.00	0.00	
14,400.00	90.00	90.12	6,953.00	2,025.52	10,085.98	10,267.30	0.00	0.00	0.00	
14,500.00	90.00	90.12	6,953.00	2,025.31	10,185.98	10,366.35	0.00	0.00	0.00	
14,600.00	90.00	90.12	6,953.00	2,025.10	10,285.98	10,465.40	0.00	0.00	0.00	
14,700.00	90.00	90.12	6,953.00	2,024.89	10,385.98	10,564.45	0.00	0.00	0.00	
14,800.00	90.00	90.12	6,953.00	2,024.68	10,485.98	10,663.50	0.00	0.00	0.00	
14,900.00	90.00	90.12	6,953.00	2,024.47	10,585.98	10,762.56	0.00	0.00	0.00	
15,000.00	90.00	90.12	6,953.00	2,024.26	10,685.98	10,861.61	0.00	0.00	0.00	
15,100.00	90.00	90.12	6,953.00	2,024.05	10,785.98	10,960.66	0.00	0.00	0.00	
15,200.00	90.00	90.12	6,953.00	2,023.84	10,885.98	11,059.71	0.00	0.00	0.00	
15,300.00	90.00	90.12	6,953.00	2,023.63	10,985.98	11,158.76	0.00	0.00	0.00	
15,400.00	90.00	90.12	6,953.00	2,023.42	11,085.98	11,257.81	0.00	0.00	0.00	
15,500.00	90.00	90.12	6,953.00	2,023.21	11,185.98	11,356.87	0.00	0.00	0.00	
15,600.00	90.00	90.12	6,953.00	2,023.00	11,285.98	11,455.92	0.00	0.00	0.00	
15,700.00	90.00	90.12	6,953.00	2,022.78	11,385.98	11,554.97	0.00	0.00	0.00	
15,800.00	90.00	90.12	6,953.00	2,022.57	11,485.98	11,654.02	0.00	0.00	0.00	
15,900.00	90.00	90.12	6,953.00	2,022.36	11,585.98	11,753.07	0.00	0.00	0.00	
16,000.00	90.00	90.12	6,953.00	2,022.15	11,685.98	11,852.12	0.00	0.00	0.00	
16,100.00	90.00	90.12	6,953.00	2,021.94	11,785.98	11,951.18	0.00	0.00	0.00	
16,200.00	90.00	90.12	6,953.00	2,021.73	11,885.98	12,050.23	0.00	0.00	0.00	
16,300.00	90.00	90.12	6,953.00	2,021.52	11,985.98	12,149.28	0.00	0.00	0.00	
16,400.00	90.00	90.12	6,953.00	2,021.31	12,085.98	12,248.33	0.00	0.00	0.00	
16,500.00	90.00	90.12	6,953.00	2,021.10	12,185.98	12,347.38	0.00	0.00	0.00	
16,600.00	90.00	90.12	6,953.00	2,020.89	12,285.98	12,446.43	0.00	0.00	0.00	
16,700.00	90.00	90.12	6,953.00	2,020.68	12,385.98	12,545.49	0.00	0.00	0.00	
16,800.00	90.00	90.12	6,953.00	2,020.47	12,485.98	12,644.54	0.00	0.00	0.00	
16,900.00	90.00	90.12	6,953.00	2,020.26	12,585.98	12,743.59	0.00	0.00	0.00	
17,000.00	90.00	90.12	6,953.00	2,020.05	12,685.98	12,842.64	0.00	0.00	0.00	
17,100.00	90.00	90.12	6,953.00	2,019.84	12,785.98	12,941.69	0.00	0.00	0.00	
17,200.00	90.00	90.12	6,953.00	2,019.63	12,885.98	13,040.74	0.00	0.00	0.00	
17,300.00	90.00	90.12	6,953.00	2,019.41	12,985.98	13,139.80	0.00	0.00	0.00	
17,400.00	90.00	90.12	6,953.00	2,019.20	13,085.98	13,238.85	0.00	0.00	0.00	
17,500.00	90.00	90.12	6,953.00	2,018.99	13,185.98	13,337.90	0.00	0.00	0.00	
17,600.00	90.00	90.12	6,953.00	2,018.78	13,285.98	13,436.95	0.00	0.00	0.00	
17,700.00	90.00	90.12	6,953.00	2,018.57	13,385.98	13,536.00	0.00	0.00	0.00	
17,800.00	90.00	90.12	6,953.00	2,018.36	13,485.98	13,635.05	0.00	0.00	0.00	

Civitas Resources

Planning Report

Database:	EDM	Local Co-ordinate Reference:	Well JESSER EAST 3E-20-01
Company:	EXTRACTION OIL & GAS	TVD Reference:	KB 25' @ 5136.00usft
Project:	WELD COUNTY	MD Reference:	KB 25' @ 5136.00usft
Site:	Sec 3-T4N-R68W	North Reference:	True
Well:	JESSER EAST 3E-20-01	Survey Calculation Method:	Minimum Curvature
Wellbore:	OWB		
Design:	PROPOSAL 1		

Planned Survey										
Measured Depth (usft)	Inclination (°)	Azimuth (°)	Vertical Depth (usft)	+N/-S (usft)	+E/-W (usft)	Vertical Section (usft)	Dogleg Rate (°/100ft)	Build Rate (°/100ft)	Turn Rate (°/100ft)	
17,900.00	90.00	90.12	6,953.00	2,018.15	13,585.97	13,734.10	0.00	0.00	0.00	
18,000.00	90.00	90.12	6,953.00	2,017.94	13,685.97	13,833.16	0.00	0.00	0.00	
18,100.00	90.00	90.12	6,953.00	2,017.73	13,785.97	13,932.21	0.00	0.00	0.00	
18,200.00	90.00	90.12	6,953.00	2,017.52	13,885.97	14,031.26	0.00	0.00	0.00	
18,300.00	90.00	90.12	6,953.00	2,017.31	13,985.97	14,130.31	0.00	0.00	0.00	
18,400.00	90.00	90.12	6,953.00	2,017.10	14,085.97	14,229.36	0.00	0.00	0.00	
18,500.00	90.00	90.12	6,953.00	2,016.89	14,185.97	14,328.41	0.00	0.00	0.00	
18,600.00	90.00	90.12	6,953.00	2,016.68	14,285.97	14,427.47	0.00	0.00	0.00	
18,700.00	90.00	90.12	6,953.00	2,016.47	14,385.97	14,526.52	0.00	0.00	0.00	
18,800.00	90.00	90.12	6,953.00	2,016.26	14,485.97	14,625.57	0.00	0.00	0.00	
18,900.00	90.00	90.12	6,953.00	2,016.04	14,585.97	14,724.62	0.00	0.00	0.00	
19,000.00	90.00	90.12	6,953.00	2,015.83	14,685.97	14,823.67	0.00	0.00	0.00	
19,073.74	90.00	90.12	6,953.00	2,015.68	14,759.71	14,896.72	0.00	0.00	0.00	
TD at 19073.74										

Design Targets										
Target Name	Dip Angle (°)	Dip Dir. (°)	TVD (usft)	+N/-S (usft)	+E/-W (usft)	Northing (usft)	Easting (usft)	Latitude	Longitude	
- hit/miss target										
- Shape										
LP-JESSER EAST 3E-2	0.00	0.00	6,953.00	2,037.53	4,387.16	1,369,786.89	3,144,667.05	40.347304°N	104.980969°W	
- plan hits target center										
- Point										
PBHL-JESSER EAST 3E	0.00	0.00	6,953.00	2,015.68	14,759.72	1,369,823.92	3,155,039.56	40.347233°N	104.943755°W	
- plan hits target center										
- Point										

Formations						
Measured Depth (usft)	Vertical Depth (usft)	Name	Lithology	Dip (°)	Dip Direction (°)	
24.00	24.00	Alluvium				
104.00	104.00	Pierre Formation				
293.15	293.00	Upper Pierre aquifer				
1,103.39	1,083.00	Base of Upper Pierre aquifer				
4,113.30	3,533.00	Larimer ("Parkman") sandstone				
4,531.08	3,863.00	Pierre Formation				
4,746.30	4,033.00	Terry ("Sussex") sandstone				
4,967.85	4,208.00	Pierre Formation				
5,361.58	4,519.00	Hygiene ("Shannon") sandstone				
5,505.91	4,633.00	Pierre Formation				
8,493.94	6,918.00	Sharon Springs Member				
8,701.16	6,953.00	Niobrara Formation				

Civitas Resources

Planning Report

Database:	EDM	Local Co-ordinate Reference:	Well JESSER EAST 3E-20-01
Company:	EXTRACTION OIL & GAS	TVD Reference:	KB 25' @ 5136.00usft
Project:	WELD COUNTY	MD Reference:	KB 25' @ 5136.00usft
Site:	Sec 3-T4N-R68W	North Reference:	True
Well:	JESSER EAST 3E-20-01	Survey Calculation Method:	Minimum Curvature
Wellbore:	OWB		
Design:	PROPOSAL 1		

Plan Annotations				
Measured Depth (usft)	Vertical Depth (usft)	Local Coordinates		Comment
		+N/-S (usft)	+E/-W (usft)	
100.00	100.00	0.00	0.00	Start Build 2.00
1,991.28	1,856.86	269.14	538.43	Start 6142.17 hold at 1991.28 MD
8,133.44	6,708.44	1,953.28	3,907.70	Start DLS 10.00 TFO 32.46
8,701.16	6,953.00	2,037.53	4,387.16	Start 10372.58 hold at 8701.16 MD
19,073.74	6,953.00	2,015.68	14,759.71	TD at 19073.74