

Cement Verification Report - Cementer's Well Service, Inc.

P.O. BOX 336220 • GREELEY, CO 80633 • (970) 353-7299 • FAX (970) 353-7712



COGCC Operator Guidance **RULE #308.A.B(2)A.ii**

CLIENT: PDC Energy	Cementer's FIELD TICKET #	300449-D
--------------------	------------------------------	----------

Requested Operator Guidance:

Well Name & Number	Lease	Kodak South	Well No.	15C
--------------------	-------	-------------	----------	-----

Well API Number	05-123-52097
-----------------	--------------

Job Date	6/5/23	Time on	18:00	6/5/23	24 hr time
----------	--------	---------	-------	--------	------------

Job Type	New Well Surface
----------	------------------

Cementing Company	Cementer's Well Service, Inc	Contact	Nate Kvamme - 303-324-4296
-------------------	------------------------------	---------	----------------------------

Ambient conditions	clear	58	temp deg F
--------------------	-------	----	------------

Slurry Description	
--------------------	--

a) Purpose	Surface - 9 5/8" 36# CSG, 13 1/2" hole
------------	--

b) Cement Class	Type I / II
-----------------	-------------

c) Cement Yield	1.61	cuft / sk
-----------------	------	-----------

d) Cement Density	13.9	PPG
-------------------	------	-----

e) Number of sks	828	sks (94# equiv)
------------------	-----	-----------------

f) Mix Fluid Type	
-------------------	--

Water / Cement	8.5	Gal / sk
----------------	-----	----------

g) Slurry mixed	237.4	BBLs slurry
-----------------	-------	-------------

h) Additives used	1.50% CaCl2	3.00% Bentonite
-------------------	-------------	-----------------

Total Water Used	325.4	BBLs H2O
------------------	-------	----------

i) Displacement Fluid Vol	127.9	BBLs H2O
---------------------------	-------	----------

j) Method of Placement	
------------------------	--

k) Set Depth	1,694	feet (ft)
--------------	-------	-----------

l) Stage tool depth	n/a
---------------------	-----

m) Float Collar Depth	1,654	feet (ft)
-----------------------	-------	-----------

n) Designed Top of Cement	n/a	to surface
---------------------------	-----	------------

o) Centralizer depths	-	feet (ft)
-----------------------	---	-----------

Charts - (pressure, density, pump rate)

Landed Plug @	1,674	psi	Final Lift Pressure @	400	psi
---------------	-------	-----	-----------------------	-----	-----

Cement Density (as weighed during job) @	13.9	PPG
--	------	-----

Job notes

a) Plug down	<input checked="" type="radio"/> Y / <input type="radio"/> N	Time	20:55	24 hr time
--------------	--	------	-------	------------

b) Floats held	<input checked="" type="radio"/> Y / <input type="radio"/> N		6/5/23
----------------	--	--	--------

c) Full Returns	<input checked="" type="radio"/> Y / <input type="radio"/> N	Lost Circulation	<input checked="" type="radio"/> Y / <input type="radio"/> N
-----------------	--	------------------	--

d) Cement to surface	<input checked="" type="radio"/> Y / <input type="radio"/> N	10.0	BBLs to surface
----------------------	--	------	-----------------

e) If no returns, top off	n/a	BBLs
---------------------------	-----	------

f) Top off detail	
-------------------	--

g) Additional Detail	0
----------------------	---

	0
--	---

Cementer's Well Service, Inc.

P.O. BOX 336220 • GREELEY, CO 80633 • (970) 353-7299 • FAX (970) 353-7712



PDC Energy

Surface Casing Pressure Test - Cement Job Graph

COMPANY DETAILS

Date	6/5/23	API #	05-123-52097	Well No.	15C
County	Weld	State	CO	Lease	Kodak South

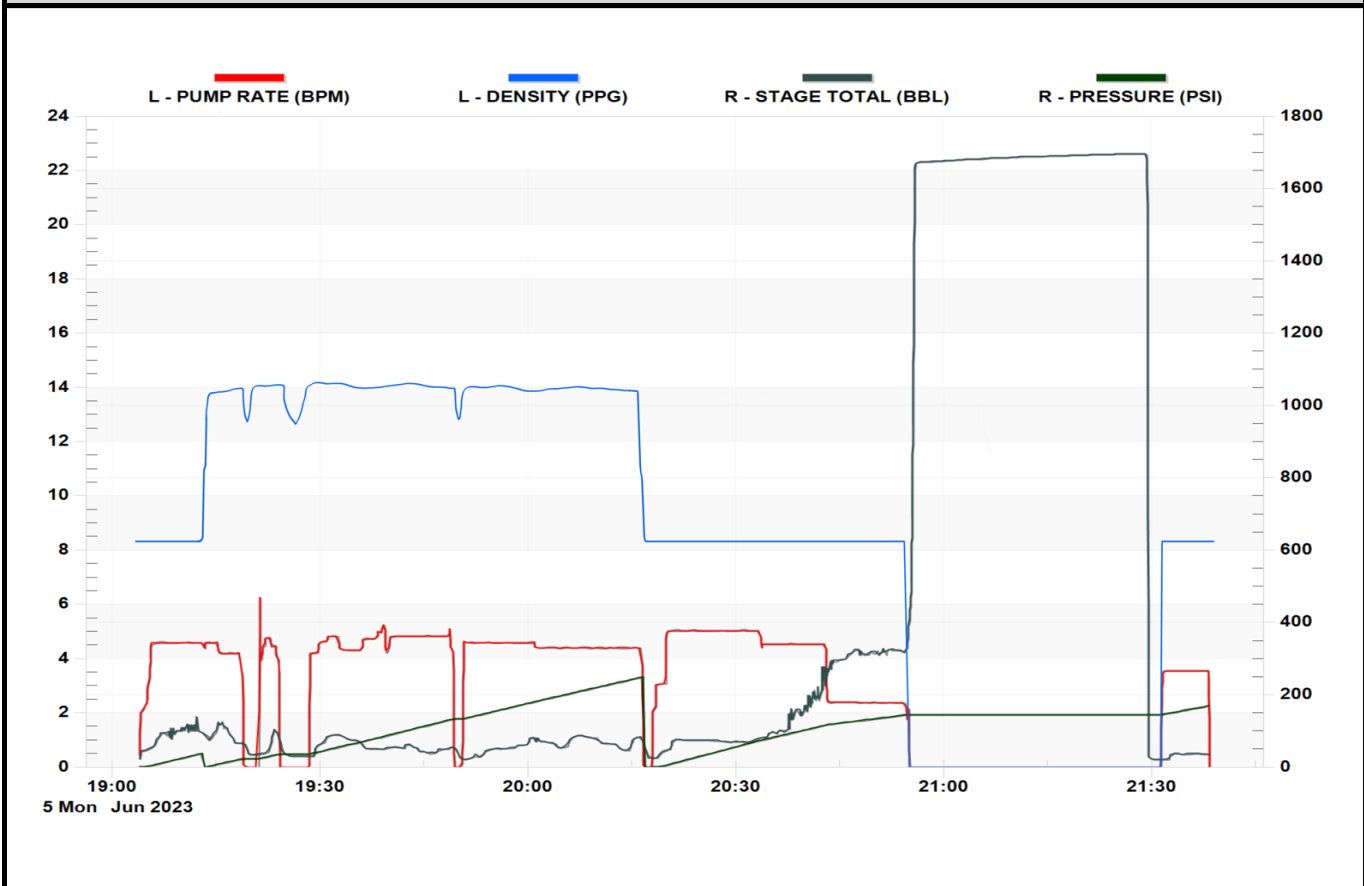
Client PDC Energy

Contact / email

JOB DETAILS

TIME ON	18:00	6/5/23	Depth	1,704	ft.	Pressure Test @	1,674	psi
START TIME	19:03	6/5/23	Bottom of Surface	1,694	ft.	10 min	1,687	psi
END TIME	21:38	6/5/23	Plug Landed @	1,654	ft.	20 min	1,690	psi
			Plug Landed @	20:55	24 hr	30 min	1,696	psi

SUMMARY GRAPH





Centralizer Depths

Well Name: KODAK SOUTH 15C

Surface, Set Depth: 1,708.9ftKB

API 05123520970000		Surface Legal Location SESW 26 6N 67W		Field Name Wattenberg		State CO		Well Configuration Type Horizontal	
Ground Elevation (ft) 4,743.00	Original KB Elevation (ft) 4,771.00	KB-Ground Distance (ft) 28.00	Spud Date 7/17/2023 22:00	Rig Release Date 7/20/2023 23:00	On Production Date	Abandon Date			

Casing Run Tally												
Run #	Ref #	Item Des	OD (in)	Wt (lb/ft)	Grade	Run?	Len (ft)	Centralized?	Ext Jw/ry	Connections	Top (ftKB)	Cum Len (ft)
2	1	Casing joints	9 5/8	36.00	J-55	Yes	40.96	Yes		LT&C	1,666.5	42.41
4	2	Casing joints	9 5/8	36.00	J-55	Yes	41.02	Yes		LT&C	1,624.2	84.74
5	3	Casing joints	9 5/8	36.00	J-55	Yes	40.66	Yes		LT&C	1,583.5	125.40
9	7	Casing joints	9 5/8	36.00	J-55	Yes	41.03	Yes		LT&C	1,420.7	288.23
13	11	Casing joints	9 5/8	36.00	J-55	Yes	40.85	Yes		LT&C	1,257.1	451.79
17	15	Casing joints	9 5/8	36.00	J-55	Yes	40.98	Yes		LT&C	1,094.1	614.76
21	19	Casing joints	9 5/8	36.00	J-55	Yes	40.68	Yes		LT&C	930.4	778.47
25	23	Casing joints	9 5/8	36.00	J-55	Yes	40.38	Yes		LT&C	768.8	940.10
29	27	Casing joints	9 5/8	36.00	J-55	Yes	40.48	Yes		LT&C	606.7	1,102.24
33	31	Casing joints	9 5/8	36.00	J-55	Yes	41.38	Yes		LT&C	443.5	1,265.41
37	35	Casing joints	9 5/8	36.00	J-55	Yes	41.06	Yes		LT&C	280.4	1,428.48
41	39	Casing joints	9 5/8	36.00	J-55	Yes	41.06	Yes		LT&C	116.0	1,592.88
42	40	Casing joints	9 5/8	36.00	J-55	Yes	40.57	Yes		LT&C	75.5	1,633.45