

Cement Post Job Report

Client: PDC Energy

Well Name: Kodak South 15C

API #: 05-123-52097

Job Date: July 20, 2023

Job Type: New Well - 5.5" Production String

Cement Company & Contact: EXERO Well Integrity -
Cheve Meyer 720-239-3819



ROCK SOLID
WELL INTEGRITY
SOLUTIONS

TREATMENT REPORT

CLIENT	WELL	RIG	JOB TYPE	THREAD TYPE	WELLHEAD CONNECTION
PDC Energy	Kodak South 15C	Ensign 769	Production	Buttress	5 1/2" HP Cement Head

WELL MD (FT)	WELL TVD (FT)	DEVIATION (DEG)	NUMBER OF STAGES	BHST (DEG)	BHCT (DEG)
16254	7098	90	1	230	230

PACKER/RETAINER/CIBP/DV TOOL DEPTHS	TOOL TYPE	TOP OF PERFS (FT)	BOTTOM OF PERFS (FT)	NUMBER OF HOLES
3179	PACKER			

CASING/TUBING/DP DETAILS								
STRING TYPE	GRADE	OD"	WT/FT	ID"	OH SIZE"	% EXCESS LEAD	% EXCESS TAIL	TOTAL DEPTH (FT)
Casing		9.625	36	8.921	13.50			1709
Casing	P-110	5.5	20	4.778	8.5	0	0	16248
MAXIMUM CASING/TUBING/DP PSI			9888			MAXIMUM ANNULAR PSI		4100

Mud Type	OBM	Rotate Y,N	No	Circulation Data				Water Requirements (bbls)		
Mud ppg	9.9	Rate (rpm)		Circulate Time (hrs)		2		Spacers	140	
Flow Temp	150	Torque Val.		Circulation Rate (bpm)		10		Stage 1 Lead	121	
Vis. Sec/qt	42	Time (hr)		Full Circulation ? (Y,N,P)		Yes		Stage 1 Tail	198	
PV (cP)	10	Pipe Reciprocation		Gas Present (Y,N)		No	Units	0	Stage 2 Lead	
Yield Pt	5	Recip Y,N	No	Centralizers/Plugs				Stage 2 Tail		
10 sec gel	2	Stroke (ft)		Quantity & Type		Customer Provided		Displacement	360	
10 min gel	4	Recip time		Top Plug/Type		Customer Provided		Wash up	20	
30 min gel	-	Stuck ?		Bottom Plug/Type		Customer Provided		Total + 10% Safety	923	

Preflush & Spacers		Stage 1 Lead - Class G		Stage 1 Tail - Class G		Stage 2 Lead		Stage 2 Tail		Displacement	
Spacer 1	Spacer	Density	12.9	Density	13.7	Density		Density		Fluid Type	Water
Density	12	Sacks	1381	Sacks	1278	Sacks		Sacks		Dens. ppg	8.34
Volume	140	Vol/bbbls	255.8	Vol/bbbls	311.8	Vol/bbbls	0.0	Vol/bbbls	0.0	Vol. bbl	360
Rate	12	Rate	11.5	Rate	11	Rate		Rate		Rate bpm	10
Spacer 2		Yield	1.04	Yield	1.37	Yield		Yield		Clay Stay?	No
Density		Gal/Sk	3.68	Gal/Sk	6.63	Gal/Sk		Gal/Sk		Biocide ?	Yes
Volume		% Excess	0	% Excess	0	% Excess		% Excess		Slow @ bbl	340
Rate		TOL (ft)	1958	TOT (ft)	8233	TOL (ft)		TOT (ft)		Bump PSI	3100

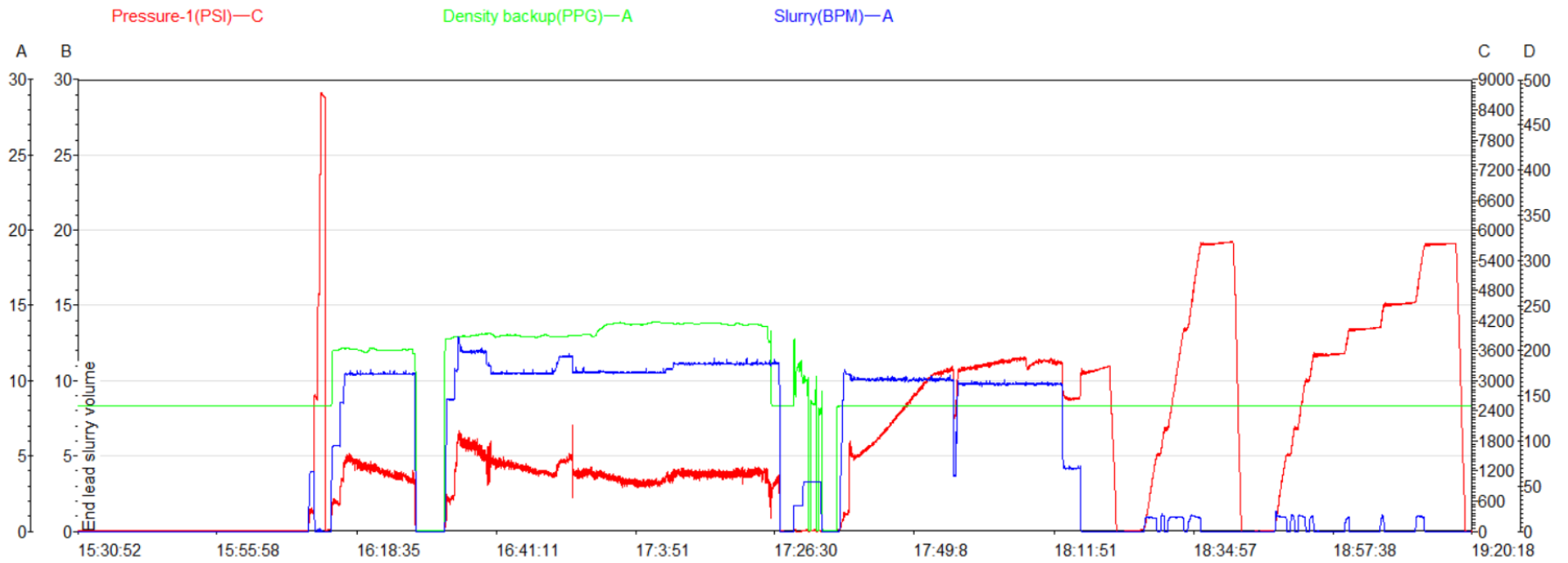
Final Displacement (bbbls)	360
Bump Plug?	Yes
Final Bump Pressure (psi)	3100
Full Returns throughout job?	Full
Vol away/Time when returns lost	-
Vol away when returns were regained	-
Spacer to Surface?	Yes
Spacer volume returned (bbbls)	48
Cement to surface?	No
Cement volume to surface stage 1	-
Cement volume to surface stage 2	-

Surface Top Out Details-Pumped		Job Summary Additional Chems Used	
Cement Type		MFC 47 (gal)	70
Dens. ppg	N/A	MFC 67 (gal)	168
Sacks qty	N/A	Defoamer (gal)	20
Gal/sk	N/A	Biocide (gal)	15
Yield	N/A	Corr. Inhib (gal)	0
Calcium Chlor. Used?	NA	Fiber (lbs)	290
Top out pipe used ?	NA	Chloride (lbs)	0
Annulus holding?	NA	Retarder (lbs)	0
		Clay Stabilizer (gal)	0
		Other	0

JOB LOG

CLIENT	WELL	RIG	JOB TYPE	START DATE	Ambient Conditions		
PDC Energy	Kodak South 15C	Ensign 769	Production	7/20/2023	Temp / Hum / Air Press 61 Deg F / 78 % / 25.08 in		
DATE (dd/mm)	TIME (hh:mm)	DENSITY (ppg)	RATE (bpm)	VOL. (bbl)	TOTAL VOL.	PRESSURE	TREATMENT COMMENTS
20-Jul	4:45:00 AM						Callout, requested on location by 13:00.
0:00	10:30:00 AM						Arrived on location.
7/20/2023	2:00:00 PM						Spotted equipment.
7/20/2023	3:30:00 PM						Safety meeting.
7/20/2023	4:05:00 PM	8.33	4.0	3	3	390	Filled lines for pressure test.
7/20/2023	4:07:00 PM					8000	Pressure test, no leaks.
7/20/2023	4:09:00 PM	12	10.5	140	140	1200	Mixed and pumped spacer @ 12ppg with surfactant and fiber.
7/20/2023	4:22:00 PM						Shutdown, dropped bottom plug.
7/20/2023	4:27:00 PM	12.9	12.0	256	256	1600	Mixed and pumped lead cmt @ 12.9ppg. (1381sk, 1.04yld, 3.68gl/sk.) TOL 1958'.
7/20/2023	4:52:00 PM	13.7	11.0	312	312	1100	Mixed and pumped tail cmt @ 13.7ppg. (1278sk, 1.37yld, 6.63gl/sk.) TOT 8233'.
7/20/2023	5:20:00 PM	8.33	11.0	15	15	775	Mixed and pumped sugar water.
7/20/2023	5:22:00 PM						Shutdown, washed pumps and lines.
7/20/2023	5:27:00 PM						Dropped top plug, verified by company man.
7/20/2023	5:31:00 PM	8.33	10.5	10	360	360	Fresh water displacement with biocide.
7/20/2023	5:37:00 PM	8.33	10.0	50	360	1750	Fresh water displacement with biocide.
7/20/2023	5:43:00 PM	8.33	10.0	100	360	2540	Fresh water displacement with biocide.
7/20/2023	5:48:00 PM	8.33	10.0	150	360	3140	Fresh water displacement with biocide.
7/20/2023	5:54:00 PM	8.33	9.8	200	360	3280	Fresh water displacement with biocide.
7/20/2023	5:59:00 PM	8.33	9.7	250	360	3390	Fresh water displacement with biocide.
7/20/2023	6:04:00 PM	8.33	9.7	300	360	3400	Fresh water displacement with biocide.
7/20/2023	6:10:00 PM	8.33	4.0	350	360	2600	Fresh water displacement with biocide.
7/20/2023	6:11:00 PM			360	360	3100	Landed plug @ calculated displacement, received 48bbl of spacer to surface. FCP 2600psi.
7/20/2023	6:16:00 PM						Checked floats, 4.5bbl back.
7/20/2023	6:22:00 PM						Turned over to Welltec to set packer.
7/20/2023	7:10:00 PM						Flushed stack for rig, verified clean by rig crew.
7/20/2023	7:40:00 PM						Rig down.
7/20/2023	8:00:00 PM						Crew departs location.

Kodak South 15C Production Pump Chart – Pressure / Rate / Density



Chart



Centralizer Depths

Well Name: KODAK SOUTH 15C

Production, Set Depth: 16,248.0ftKB

API 0512352097000		Surface Legal Location SESW 26 6N 67W		Field Name Wattenberg		State CO		Well Configuration Type Horizontal			
Ground Elevation (ft) 4,743.00	Original KB Elevation (ft) 4,771.00	KB-Ground Distance (ft) 28.00	Spud Date 7/17/2023 22:00	Rig Release Date 7/20/2023 23:00	On Production Date	Abandon Date					

Casing Run Tally

Run #	Ref #	Item Des	OD (in)	Wt (lb/ft)	Grade	Run?	Len (ft)	Centralized?	Ext Jwry	Connections	Top (ftKB)	Cum Len (ft)
7	1	Casing Joints	5 1/2	20.00	P-110	Yes	44.19	Yes		GBCD	16,169.4	78.58
9	3	Casing Joints	5 1/2	20.00	P-110	Yes	44.24	Yes		GBCD	16,082.2	165.82
11	5	Casing Joints	5 1/2	20.00	P-110	Yes	44.30	Yes		GBCD	15,993.6	254.41
13	7	Casing Joints	5 1/2	20.00	P-110	Yes	44.33	Yes		GBCD	15,905.0	343.04
15	9	Casing Joints	5 1/2	20.00	P-110	Yes	44.36	Yes		GBCD	15,816.3	431.73
17		Marker Joint	5 1/2	20.00	P-110	Yes	21.73	Yes		GBCD	15,750.3	497.70
19	12	Casing Joints	5 1/2	20.00	P-110	Yes	43.76	Yes		GBCD	15,664.4	583.56
21	14	Casing Joints	5 1/2	20.00	P-110	Yes	43.68	Yes		GBCD	15,576.9	671.15
23	16	Casing Joints	5 1/2	20.00	P-110	Yes	44.20	Yes		GBCD	15,489.3	758.70
25	18	Casing Joints	5 1/2	20.00	P-110	Yes	44.22	Yes		GBCD	15,401.7	846.35
27	20	Casing Joints	5 1/2	20.00	P-110	Yes	44.22	Yes		GBCD	15,313.2	934.81
29	22	Casing Joints	5 1/2	20.00	P-110	Yes	44.15	Yes		GBCD	15,224.8	1,023.18
31	24	Casing Joints	5 1/2	20.00	P-110	Yes	44.20	Yes		GBCD	15,136.4	1,111.63
33	26	Casing Joints	5 1/2	20.00	P-110	Yes	44.15	Yes		GBCD	15,048.1	1,199.95
35	28	Casing Joints	5 1/2	20.00	P-110	Yes	43.62	Yes		GBCD	14,960.3	1,287.70
37	30	Casing Joints	5 1/2	20.00	P-110	Yes	44.20	Yes		GBCD	14,872.7	1,375.26
39	32	Casing Joints	5 1/2	20.00	P-110	Yes	43.63	Yes		GBCD	14,786.3	1,461.69
41	34	Casing Joints	5 1/2	20.00	P-110	Yes	44.30	Yes		GBCD	14,697.9	1,550.14
43	36	Casing Joints	5 1/2	20.00	P-110	Yes	44.25	Yes		GBCD	14,609.3	1,638.68
45	38	Casing Joints	5 1/2	20.00	P-110	Yes	43.84	Yes		GBCD	14,521.2	1,726.84
47	40	Casing Joints	5 1/2	20.00	P-110	Yes	44.17	Yes		GBCD	14,433.5	1,814.51
49	42	Casing Joints	5 1/2	20.00	P-110	Yes	44.30	Yes		GBCD	14,344.9	1,903.07
51	44	Casing Joints	5 1/2	20.00	P-110	Yes	43.40	Yes		GBCD	14,258.2	1,989.77
53	46	Casing Joints	5 1/2	20.00	P-110	Yes	44.30	Yes		GBCD	14,170.7	2,077.28
55	48	Casing Joints	5 1/2	20.00	P-110	Yes	44.23	Yes		GBCD	14,083.1	2,164.93
57	50	Casing Joints	5 1/2	20.00	P-110	Yes	44.24	Yes		GBCD	13,994.6	2,253.39
59	52	Casing Joints	5 1/2	20.00	P-110	Yes	44.30	Yes		GBCD	13,906.7	2,341.33
61	54	Casing Joints	5 1/2	20.00	P-110	Yes	44.30	Yes		GBCD	13,818.1	2,429.95
63	56	Casing Joints	5 1/2	20.00	P-110	Yes	44.32	Yes		GBCD	13,729.5	2,518.48
65	58	Casing Joints	5 1/2	20.00	P-110	Yes	43.72	Yes		GBCD	13,642.2	2,605.85
67	60	Casing Joints	5 1/2	20.00	P-110	Yes	44.32	Yes		GBCD	13,553.5	2,694.48



Centralizer Depths

Well Name: KODAK SOUTH 15C

Production, Set Depth: 16,248.0ftKB

API 0512352097000		Surface Legal Location SESW 26 6N 67W		Field Name Wattenberg		State CO		Well Configuration Type Horizontal			
Ground Elevation (ft) 4,743.00	Original KB Elevation (ft) 4,771.00	KB-Ground Distance (ft) 28.00	Spud Date 7/17/2023 22:00	Rig Release Date 7/20/2023 23:00	On Production Date	Abandon Date					

Casing Run Tally

Run #	Ref #	Item Des	OD (in)	Wt (lb/ft)	Grade	Run?	Len (ft)	Centralized?	Ext Jw/ry	Connections	Top (ftKB)	Cum Len (ft)
69	62	Casing Joints	5 1/2	20.00	P-110	Yes	44.32	Yes		GBCD	13,464.9	2,783.15
71	64	Casing Joints	5 1/2	20.00	P-110	Yes	44.31	Yes		GBCD	13,376.8	2,871.16
73	66	Casing Joints	5 1/2	20.00	P-110	Yes	44.28	Yes		GBCD	13,288.3	2,959.72
75	68	Casing Joints	5 1/2	20.00	P-110	Yes	43.67	Yes		GBCD	13,200.3	3,047.68
77	70	Casing Joints	5 1/2	20.00	P-110	Yes	44.34	Yes		GBCD	13,111.7	3,136.34
79	72	Casing Joints	5 1/2	20.00	P-110	Yes	44.26	Yes		GBCD	13,023.1	3,224.87
81	74	Casing Joints	5 1/2	20.00	P-110	Yes	44.24	Yes		GBCD	12,935.6	3,312.44
83	76	Casing Joints	5 1/2	20.00	P-110	Yes	42.08	Yes		GBCD	12,850.0	3,398.03
85	78	Casing Joints	5 1/2	20.00	P-110	Yes	44.26	Yes		GBCD	12,761.2	3,486.81
87	80	Casing Joints	5 1/2	20.00	P-110	Yes	43.50	Yes		GBCD	12,673.4	3,574.62
89	82	Casing Joints	5 1/2	20.00	P-110	Yes	44.25	Yes		GBCD	12,585.6	3,662.38
91	84	Casing Joints	5 1/2	20.00	P-110	Yes	43.50	Yes		GBCD	12,498.6	3,749.37
93	86	Casing Joints	5 1/2	20.00	P-110	Yes	44.26	Yes		GBCD	12,410.9	3,837.09
95	88	Casing Joints	5 1/2	20.00	P-110	Yes	44.25	Yes		GBCD	12,323.2	3,924.84
97	90	Casing Joints	5 1/2	20.00	P-110	Yes	44.26	Yes		GBCD	12,234.7	4,013.34
99	92	Casing Joints	5 1/2	20.00	P-110	Yes	43.13	Yes		GBCD	12,147.2	4,100.77
101	94	Casing Joints	5 1/2	20.00	P-110	Yes	43.96	Yes		GBCD	12,059.0	4,189.03
103	96	Casing Joints	5 1/2	20.00	P-110	Yes	44.28	Yes		GBCD	11,970.8	4,277.24
105	97	Casing Joints	5 1/2	20.00	P-110	Yes	44.27	Yes		GBCD	11,904.4	4,343.64
107	99	Casing Joints	5 1/2	20.00	P-110	Yes	44.24	Yes		GBCD	11,816.6	4,431.40
109	101	Casing Joints	5 1/2	20.00	P-110	Yes	44.29	Yes		GBCD	11,728.1	4,519.95
111	103	Casing Joints	5 1/2	20.00	P-110	Yes	44.25	Yes		GBCD	11,639.5	4,608.48
113	105	Casing Joints	5 1/2	20.00	P-110	Yes	44.26	Yes		GBCD	11,551.4	4,696.62
115	107	Casing Joints	5 1/2	20.00	P-110	Yes	44.25	Yes		GBCD	11,462.8	4,785.17
117	109	Casing Joints	5 1/2	20.00	P-110	Yes	44.28	Yes		GBCD	11,374.3	4,873.75
119	111	Casing Joints	5 1/2	20.00	P-110	Yes	44.31	Yes		GBCD	11,285.7	4,962.33
121	113	Casing Joints	5 1/2	20.00	P-110	Yes	44.28	Yes		GBCD	11,197.1	5,050.91
123	115	Casing Joints	5 1/2	20.00	P-110	Yes	44.31	Yes		GBCD	11,109.7	5,138.33
125	117	Casing Joints	5 1/2	20.00	P-110	Yes	44.31	Yes		GBCD	11,021.1	5,226.90
127	119	Casing Joints	5 1/2	20.00	P-110	Yes	44.28	Yes		GBCD	10,932.5	5,315.48
129	121	Casing Joints	5 1/2	20.00	P-110	Yes	44.27	Yes		GBCD	10,844.0	5,404.04



Centralizer Depths

Well Name: KODAK SOUTH 15C

Production, Set Depth: 16,248.0ftKB

API 0512352097000		Surface Legal Location SESW 26 6N 67W		Field Name Wattenberg		State CO		Well Configuration Type Horizontal			
Ground Elevation (ft) 4,743.00	Original KB Elevation (ft) 4,771.00	KB-Ground Distance (ft) 28.00	Spud Date 7/17/2023 22:00	Rig Release Date 7/20/2023 23:00	On Production Date	Abandon Date					

Casing Run Tally

Run #	Ref #	Item Des	OD (in)	Wt (lb/ft)	Grade	Run?	Len (ft)	Centralized?	Ext Jw/ry	Connections	Top (ftKB)	Cum Len (ft)
131	123	Casing Joints	5 1/2	20.00	P-110	Yes	44.31	Yes		GBCD	10,755.4	5,492.65
133	125	Casing Joints	5 1/2	20.00	P-110	Yes	44.29	Yes		GBCD	10,666.8	5,581.20
135	127	Casing Joints	5 1/2	20.00	P-110	Yes	44.28	Yes		GBCD	10,578.2	5,669.78
137	129	Casing Joints	5 1/2	20.00	P-110	Yes	44.31	Yes		GBCD	10,489.6	5,758.39
139	131	Casing Joints	5 1/2	20.00	P-110	Yes	44.25	Yes		GBCD	10,401.1	5,846.94
141	133	Casing Joints	5 1/2	20.00	P-110	Yes	44.28	Yes		GBCD	10,312.5	5,935.48
143	135	Casing Joints	5 1/2	20.00	P-110	Yes	44.26	Yes		GBCD	10,225.3	6,022.66
145	137	Casing Joints	5 1/2	20.00	P-110	Yes	44.29	Yes		GBCD	10,136.8	6,111.25
147	139	Casing Joints	5 1/2	20.00	P-110	Yes	43.66	Yes		GBCD	10,049.1	6,198.87
149	141	Casing Joints	5 1/2	20.00	P-110	Yes	44.26	Yes		GBCD	9,961.6	6,286.43
151	143	Casing Joints	5 1/2	20.00	P-110	Yes	44.32	Yes		GBCD	9,873.0	6,375.03
153	145	Casing Joints	5 1/2	20.00	P-110	Yes	42.81	Yes		GBCD	9,785.9	6,462.11
155	147	Casing Joints	5 1/2	20.00	P-110	Yes	44.30	Yes		GBCD	9,697.3	6,550.69
157	149	Casing Joints	5 1/2	20.00	P-110	Yes	44.30	Yes		GBCD	9,609.1	6,638.94
159	151	Casing Joints	5 1/2	20.00	P-110	Yes	44.31	Yes		GBCD	9,521.9	6,726.10
161	153	Casing Joints	5 1/2	20.00	P-110	Yes	44.27	Yes		GBCD	9,433.3	6,814.69
163	155	Casing Joints	5 1/2	20.00	P-110	Yes	44.22	Yes		GBCD	9,344.8	6,903.21
165	157	Casing Joints	5 1/2	20.00	P-110	Yes	44.24	Yes		GBCD	9,256.3	6,991.71
167	159	Casing Joints	5 1/2	20.00	P-110	Yes	44.31	Yes		GBCD	9,167.7	7,080.29
169	161	Casing Joints	5 1/2	20.00	P-110	Yes	42.13	Yes		GBCD	9,081.3	7,166.70
171	163	Casing Joints	5 1/2	20.00	P-110	Yes	44.26	Yes		GBCD	8,993.5	7,254.46
173	165	Casing Joints	5 1/2	20.00	P-110	Yes	44.24	Yes		GBCD	8,905.3	7,342.66
175	167	Casing Joints	5 1/2	20.00	P-110	Yes	43.50	Yes		GBCD	8,817.6	7,430.42
177	169	Casing Joints	5 1/2	20.00	P-110	Yes	44.25	Yes		GBCD	8,729.1	7,518.91
179	171	Casing Joints	5 1/2	20.00	P-110	Yes	44.25	Yes		GBCD	8,641.3	7,606.66
181	173	Casing Joints	5 1/2	20.00	P-110	Yes	42.11	Yes		GBCD	8,555.0	7,693.03
183	175	Casing Joints	5 1/2	20.00	P-110	Yes	44.28	Yes		GBCD	8,467.1	7,780.87
185	177	Casing Joints	5 1/2	20.00	P-110	Yes	44.27	Yes		GBCD	8,378.6	7,869.39
187	179	Casing Joints	5 1/2	20.00	P-110	Yes	44.27	Yes		GBCD	8,290.1	7,957.92
189	181	Casing Joints	5 1/2	20.00	P-110	Yes	44.28	Yes		GBCD	8,201.5	8,046.48
191	183	Casing Joints	5 1/2	20.00	P-110	Yes	44.29	Yes		GBCD	8,113.0	8,135.03



Centralizer Depths

Well Name: KODAK SOUTH 15C

Production, Set Depth: 16,248.0ftKB

API 05123520970000		Surface Legal Location SESW 26 6N 67W		Field Name Wattenberg		State CO		Well Configuration Type Horizontal			
Ground Elevation (ft) 4,743.00		Original KB Elevation (ft) 4,771.00		KB-Ground Distance (ft) 28.00		Spud Date 7/17/2023 22:00		Rig Release Date 7/20/2023 23:00		On Production Date Abandon Date	

Casing Run Tally

Run #	Ref #	Item Des	OD (in)	Wt (lb/ft)	Grade	Run?	Len (ft)	Centralized?	Ext Jwry	Connections	Top (ftKB)	Cum Len (ft)
193	185	Casing Joints	5 1/2	20.00	P-110	Yes	44.28	Yes		GBCD	8,024.4	8,223.61
195	187	Casing Joints	5 1/2	20.00	P-110	Yes	44.27	Yes		GBCD	7,935.8	8,312.16
197	189	Casing Joints	5 1/2	20.00	P-110	Yes	44.26	Yes		GBCD	7,847.6	8,400.38
199	191	Casing Joints	5 1/2	20.00	P-110	Yes	43.15	Yes		GBCD	7,760.5	8,487.51
201	193	Casing Joints	5 1/2	20.00	P-110	Yes	43.89	Yes		GBCD	7,672.3	8,575.67
202		Marker Joint	5 1/2	20.00	P-110	Yes	21.62	Yes		GBCD	7,650.7	8,597.29
203	194	Casing Joints	5 1/2	20.00	P-110	Yes	44.27	Yes		GBCD	7,606.4	8,641.56
204	195	Casing Joints	5 1/2	20.00	P-110	Yes	44.26	Yes		GBCD	7,562.2	8,685.82
205	196	Casing Joints	5 1/2	20.00	P-110	Yes	44.25	Yes		GBCD	7,517.9	8,730.07
206	197	Casing Joints	5 1/2	20.00	P-110	Yes	44.28	Yes		GBCD	7,473.7	8,774.35
207	198	Casing Joints	5 1/2	20.00	P-110	Yes	44.27	Yes		GBCD	7,429.4	8,818.62
208	199	Casing Joints	5 1/2	20.00	P-110	Yes	44.28	Yes		GBCD	7,385.1	8,862.90
209	200	Casing Joints	5 1/2	20.00	P-110	Yes	44.29	Yes		GBCD	7,340.8	8,907.19
210	201	Casing Joints	5 1/2	20.00	P-110	Yes	44.31	Yes		GBCD	7,296.5	8,951.50
211	202	Casing Joints	5 1/2	20.00	P-110	Yes	44.30	Yes		GBCD	7,252.2	8,995.80
212	203	Casing Joints	5 1/2	20.00	P-110	Yes	44.26	Yes		GBCD	7,207.9	9,040.06
213	204	Casing Joints	5 1/2	20.00	P-110	Yes	44.31	Yes		GBCD	7,163.6	9,084.37
214	205	Casing Joints	5 1/2	20.00	P-110	Yes	43.47	Yes		GBCD	7,120.2	9,127.84
215	206	Casing Joints	5 1/2	20.00	P-110	Yes	44.26	Yes		GBCD	7,075.9	9,172.10
216	207	Casing Joints	5 1/2	20.00	P-110	Yes	44.31	Yes		GBCD	7,031.6	9,216.41
217	208	Casing Joints	5 1/2	20.00	P-110	Yes	44.30	Yes		GBCD	6,987.3	9,260.71
218	209	Casing Joints	5 1/2	20.00	P-110	Yes	44.24	Yes		GBCD	6,943.1	9,304.95
219	210	Casing Joints	5 1/2	20.00	P-110	Yes	44.29	Yes		GBCD	6,898.8	9,349.24
220	211	Casing Joints	5 1/2	20.00	P-110	Yes	43.95	Yes		GBCD	6,854.8	9,393.19
221	212	Casing Joints	5 1/2	20.00	P-110	Yes	44.26	Yes		GBCD	6,810.6	9,437.45
222	213	Casing Joints	5 1/2	20.00	P-110	Yes	44.24	Yes		GBCD	6,766.3	9,481.69
223	214	Casing Joints	5 1/2	20.00	P-110	Yes	44.26	Yes		GBCD	6,722.1	9,525.95
224	215	Casing Joints	5 1/2	20.00	P-110	Yes	44.27	Yes		GBCD	6,677.8	9,570.22
225	216	Casing Joints	5 1/2	20.00	P-110	Yes	44.24	Yes		GBCD	6,633.5	9,614.46
226	217	Casing Joints	5 1/2	20.00	P-110	Yes	44.23	Yes		GBCD	6,589.3	9,658.69
227	218	Casing Joints	5 1/2	20.00	P-110	Yes	44.28	Yes		GBCD	6,545.0	9,702.97



Centralizer Depths

Well Name: KODAK SOUTH 15C

Production, Set Depth: 16,248.0ftKB

API 05123520970000		Surface Legal Location SESW 26 6N 67W		Field Name Wattenberg		State CO		Well Configuration Type Horizontal			
Ground Elevation (ft) 4,743.00		Original KB Elevation (ft) 4,771.00		KB-Ground Distance (ft) 28.00		Spud Date 7/17/2023 22:00		Rig Release Date 7/20/2023 23:00		On Production Date Abandon Date	

Casing Run Tally

Run #	Ref #	Item Des	OD (in)	Wt (lb/ft)	Grade	Run?	Len (ft)	Centralized?	Ext Jwry	Connections	Top (ftKB)	Cum Len (ft)
228	219	Casing Joints	5 1/2	20.00	P-110	Yes	44.24	Yes		GBCD	6,500.8	9,747.21
229		Marker Joint	5 1/2	20.00	P-110	Yes	9.80	Yes		GBCD	6,491.0	9,757.01
230	220	Casing Joints	5 1/2	20.00	P-110	Yes	44.26	Yes		GBCD	6,446.7	9,801.27
231	221	Casing Joints	5 1/2	20.00	P-110	Yes	44.25	Yes		GBCD	6,402.5	9,845.52
232	222	Casing Joints	5 1/2	20.00	P-110	Yes	44.28	Yes		GBCD	6,358.2	9,889.80
233	223	Casing Joints	5 1/2	20.00	P-110	Yes	44.30	Yes		GBCD	6,313.9	9,934.10
234	224	Casing Joints	5 1/2	20.00	P-110	Yes	44.28	Yes		GBCD	6,269.6	9,978.38
235	225	Casing Joints	5 1/2	20.00	P-110	Yes	44.25	Yes		GBCD	6,225.4	10,022.63
236	226	Casing Joints	5 1/2	20.00	P-110	Yes	44.28	Yes		GBCD	6,181.1	10,066.91
237	227	Casing Joints	5 1/2	20.00	P-110	Yes	43.61	Yes		GBCD	6,137.5	10,110.52
238	228	Casing Joints	5 1/2	20.00	P-110	Yes	44.30	Yes		GBCD	6,093.2	10,154.82
239	229	Casing Joints	5 1/2	20.00	P-110	Yes	44.27	Yes		GBCD	6,048.9	10,199.09
240	230	Casing Joints	5 1/2	20.00	P-110	Yes	44.26	Yes		GBCD	6,004.7	10,243.35
241	231	Casing Joints	5 1/2	20.00	P-110	Yes	43.60	Yes		GBCD	5,961.1	10,286.95
242	232	Casing Joints	5 1/2	20.00	P-110	Yes	44.27	Yes		GBCD	5,916.8	10,331.22
243	233	Casing Joints	5 1/2	20.00	P-110	Yes	44.28	Yes		GBCD	5,872.5	10,375.50
244	234	Casing Joints	5 1/2	20.00	P-110	Yes	44.29	Yes		GBCD	5,828.2	10,419.79
245	235	Casing Joints	5 1/2	20.00	P-110	Yes	42.32	Yes		GBCD	5,785.9	10,462.11
246	236	Casing Joints	5 1/2	20.00	P-110	Yes	44.30	Yes		GBCD	5,741.6	10,506.41
247	237	Casing Joints	5 1/2	20.00	P-110	Yes	43.54	Yes		GBCD	5,698.1	10,549.95
248	238	Casing Joints	5 1/2	20.00	P-110	Yes	44.24	Yes		GBCD	5,653.8	10,594.19
249	239	Casing Joints	5 1/2	20.00	P-110	Yes	44.27	Yes		GBCD	5,609.5	10,638.46
250	240	Casing Joints	5 1/2	20.00	P-110	Yes	44.23	Yes		GBCD	5,565.3	10,682.69
251	241	Casing Joints	5 1/2	20.00	P-110	Yes	43.90	Yes		GBCD	5,521.4	10,726.59
252	242	Casing Joints	5 1/2	20.00	P-110	Yes	43.74	Yes		GBCD	5,477.7	10,770.33
253	243	Casing Joints	5 1/2	20.00	P-110	Yes	44.24	Yes		GBCD	5,433.4	10,814.57
254	244	Casing Joints	5 1/2	20.00	P-110	Yes	44.26	Yes		GBCD	5,389.2	10,858.83
255	245	Casing Joints	5 1/2	20.00	P-110	Yes	43.92	Yes		GBCD	5,345.3	10,902.75
256	246	Casing Joints	5 1/2	20.00	P-110	Yes	44.29	Yes		GBCD	5,301.0	10,947.04
257	247	Casing Joints	5 1/2	20.00	P-110	Yes	44.28	Yes		GBCD	5,256.7	10,991.32
258	248	Casing Joints	5 1/2	20.00	P-110	Yes	43.84	Yes		GBCD	5,212.8	11,035.16



Centralizer Depths

Well Name: KODAK SOUTH 15C

Production, Set Depth: 16,248.0ftKB

API 05123520970000		Surface Legal Location SESW 26 6N 67W		Field Name Wattenberg		State CO		Well Configuration Type Horizontal			
Ground Elevation (ft) 4,743.00	Original KB Elevation (ft) 4,771.00	KB-Ground Distance (ft) 28.00	Spud Date 7/17/2023 22:00	Rig Release Date 7/20/2023 23:00	On Production Date	Abandon Date					

Casing Run Tally

Run #	Ref #	Item Des	OD (in)	Wt (lb/ft)	Grade	Run?	Len (ft)	Centralized?	Ext Jw/ry	Connections	Top (ftKB)	Cum Len (ft)
259	249	Casing Joints	5 1/2	20.00	P-110	Yes	44.28	Yes		GBCD	5,168.6	11,079.44
260	250	Casing Joints	5 1/2	20.00	P-110	Yes	42.40	Yes		GBCD	5,126.2	11,121.84
261	251	Casing Joints	5 1/2	20.00	P-110	Yes	44.30	Yes		GBCD	5,081.9	11,166.14
262	252	Casing Joints	5 1/2	20.00	P-110	Yes	44.28	Yes		GBCD	5,037.6	11,210.42
263	253	Casing Joints	5 1/2	20.00	P-110	Yes	44.26	Yes		GBCD	4,993.3	11,254.68
264	254	Casing Joints	5 1/2	20.00	P-110	Yes	43.78	Yes		GBCD	4,949.5	11,298.46
265	255	Casing Joints	5 1/2	20.00	P-110	Yes	44.27	Yes		GBCD	4,905.3	11,342.73
266	256	Casing Joints	5 1/2	20.00	P-110	Yes	43.85	Yes		GBCD	4,861.4	11,386.58
267	257	Casing Joints	5 1/2	20.00	P-110	Yes	43.88	Yes		GBCD	4,817.5	11,430.46
268	258	Casing Joints	5 1/2	20.00	P-110	Yes	44.25	Yes		GBCD	4,773.3	11,474.71
269	259	Casing Joints	5 1/2	20.00	P-110	Yes	44.29	Yes		GBCD	4,729.0	11,519.00
270	260	Casing Joints	5 1/2	20.00	P-110	Yes	44.31	Yes		GBCD	4,684.7	11,563.31
271	261	Casing Joints	5 1/2	20.00	P-110	Yes	43.91	Yes		GBCD	4,640.8	11,607.22
272	262	Casing Joints	5 1/2	20.00	P-110	Yes	43.58	Yes		GBCD	4,597.2	11,650.80
273	263	Casing Joints	5 1/2	20.00	P-110	Yes	42.86	Yes		GBCD	4,554.3	11,693.66
274	264	Casing Joints	5 1/2	20.00	P-110	Yes	44.31	Yes		GBCD	4,510.0	11,737.97
275	265	Casing Joints	5 1/2	20.00	P-110	Yes	44.32	Yes		GBCD	4,465.7	11,782.29
276	266	Casing Joints	5 1/2	20.00	P-110	Yes	44.19	Yes		GBCD	4,421.5	11,826.48
277	267	Casing Joints	5 1/2	20.00	P-110	Yes	44.15	Yes		GBCD	4,377.4	11,870.63
278	268	Casing Joints	5 1/2	20.00	P-110	Yes	44.25	Yes		GBCD	4,333.1	11,914.88
279	269	Casing Joints	5 1/2	20.00	P-110	Yes	44.30	Yes		GBCD	4,288.8	11,959.18
280	270	Casing Joints	5 1/2	20.00	P-110	Yes	44.20	Yes		GBCD	4,244.6	12,003.38
281	271	Casing Joints	5 1/2	20.00	P-110	Yes	44.28	Yes		GBCD	4,200.3	12,047.66
282	272	Casing Joints	5 1/2	20.00	P-110	Yes	44.26	Yes		GBCD	4,156.1	12,091.92
283	273	Casing Joints	5 1/2	20.00	P-110	Yes	43.65	Yes		GBCD	4,112.4	12,135.57
284	274	Casing Joints	5 1/2	20.00	P-110	Yes	44.28	Yes		GBCD	4,068.2	12,179.85
285	275	Casing Joints	5 1/2	20.00	P-110	Yes	44.21	Yes		GBCD	4,023.9	12,224.06
286	276	Casing Joints	5 1/2	20.00	P-110	Yes	44.25	Yes		GBCD	3,979.7	12,268.31
287	277	Casing Joints	5 1/2	20.00	P-110	Yes	44.27	Yes		GBCD	3,935.4	12,312.58
288	278	Casing Joints	5 1/2	20.00	P-110	Yes	44.26	Yes		GBCD	3,891.2	12,356.84
289	279	Casing Joints	5 1/2	20.00	P-110	Yes	44.25	Yes		GBCD	3,846.9	12,401.09



Centralizer Depths

Well Name: KODAK SOUTH 15C

Production, Set Depth: 16,248.0ftKB

API 05123520970000		Surface Legal Location SESW 26 6N 67W		Field Name Wattenberg		State CO		Well Configuration Type Horizontal			
Ground Elevation (ft) 4,743.00		Original KB Elevation (ft) 4,771.00		KB-Ground Distance (ft) 28.00		Spud Date 7/17/2023 22:00		Rig Release Date 7/20/2023 23:00		On Production Date Abandon Date	

Casing Run Tally												
Run #	Ref #	Item Des	OD (in)	Wt (lb/ft)	Grade	Run?	Len (ft)	Centralized?	Ext Jw/ry	Connections	Top (ftKB)	Cum Len (ft)
290	280	Casing Joints	5 1/2	20.00	P-110	Yes	43.43	Yes		GBCD	3,803.5	12,444.52
291	281	Casing Joints	5 1/2	20.00	P-110	Yes	44.33	Yes		GBCD	3,759.2	12,488.85
292	282	Casing Joints	5 1/2	20.00	P-110	Yes	44.32	Yes		GBCD	3,714.8	12,533.17
293	283	Casing Joints	5 1/2	20.00	P-110	Yes	44.33	Yes		GBCD	3,670.5	12,577.50
294	284	Casing Joints	5 1/2	20.00	P-110	Yes	43.92	Yes		GBCD	3,626.6	12,621.42
295	285	Casing Joints	5 1/2	20.00	P-110	Yes	44.33	Yes		GBCD	3,582.3	12,665.75
296	286	Casing Joints	5 1/2	20.00	P-110	Yes	44.19	Yes		GBCD	3,538.1	12,709.94
297	287	Casing Joints	5 1/2	20.00	P-110	Yes	44.20	Yes		GBCD	3,493.9	12,754.14
298	288	Casing Joints	5 1/2	20.00	P-110	Yes	43.92	Yes		GBCD	3,449.9	12,798.06
299	289	Casing Joints	5 1/2	20.00	P-110	Yes	44.33	Yes		GBCD	3,405.6	12,842.39
300	290	Casing Joints	5 1/2	20.00	P-110	Yes	44.31	Yes		GBCD	3,361.3	12,886.70
301	291	Casing Joints	5 1/2	20.00	P-110	Yes	43.29	Yes		GBCD	3,318.0	12,929.99
302	292	Casing Joints	5 1/2	20.00	P-110	Yes	44.30	Yes		GBCD	3,273.7	12,974.29
303	293	Casing Joints	5 1/2	20.00	P-110	Yes	43.30	Yes		GBCD	3,230.4	13,017.59
304	294	Casing Joints	5 1/2	20.00	P-110	Yes	44.18	Yes		GBCD	3,186.2	13,061.77
306	295	Casing Joints	5 1/2	20.00	P-110	Yes	43.69	Yes		GBCD	3,127.7	13,120.27
307	296	Casing Joints	5 1/2	20.00	P-110	Yes	44.32	Yes		GBCD	3,083.4	13,164.59
308	297	Casing Joints	5 1/2	20.00	P-110	Yes	44.31	Yes		GBCD	3,039.1	13,208.90
309	298	Casing Joints	5 1/2	20.00	P-110	Yes	44.30	Yes		GBCD	2,994.8	13,253.20
310	299	Casing Joints	5 1/2	20.00	P-110	Yes	44.31	Yes		GBCD	2,950.5	13,297.51
311	300	Casing Joints	5 1/2	20.00	P-110	Yes	44.30	Yes		GBCD	2,906.2	13,341.81
312	301	Casing Joints	5 1/2	20.00	P-110	Yes	43.63	Yes		GBCD	2,862.6	13,385.44
313	302	Casing Joints	5 1/2	20.00	P-110	Yes	43.18	Yes		GBCD	2,819.4	13,428.62
314	303	Casing Joints	5 1/2	20.00	P-110	Yes	44.31	Yes		GBCD	2,775.1	13,472.93
315	304	Casing Joints	5 1/2	20.00	P-110	Yes	44.32	Yes		GBCD	2,730.8	13,517.25
316	305	Casing Joints	5 1/2	20.00	P-110	Yes	44.31	Yes		GBCD	2,686.4	13,561.56
317	306	Casing Joints	5 1/2	20.00	P-110	Yes	44.32	Yes		GBCD	2,642.1	13,605.88
318	307	Casing Joints	5 1/2	20.00	P-110	Yes	44.30	Yes		GBCD	2,597.8	13,650.18
319	308	Casing Joints	5 1/2	20.00	P-110	Yes	44.32	Yes		GBCD	2,553.5	13,694.50
320	309	Casing Joints	5 1/2	20.00	P-110	Yes	44.31	Yes		GBCD	2,509.2	13,738.81
321	310	Casing Joints	5 1/2	20.00	P-110	Yes	44.30	Yes		GBCD	2,464.9	13,783.11



Centralizer Depths

Well Name: KODAK SOUTH 15C

Production, Set Depth: 16,248.0ftKB

API 0512352097000		Surface Legal Location SESW 26 6N 67W		Field Name Wattenberg		State CO		Well Configuration Type Horizontal			
Ground Elevation (ft) 4,743.00	Original KB Elevation (ft) 4,771.00	KB-Ground Distance (ft) 28.00	Spud Date 7/17/2023 22:00	Rig Release Date 7/20/2023 23:00	On Production Date	Abandon Date					

Casing Run Tally

Run #	Ref #	Item Des	OD (in)	Wt (lb/ft)	Grade	Run?	Len (ft)	Centralized?	Ext Jw/ry	Connections	Top (ftKB)	Cum Len (ft)
322	311	Casing Joints	5 1/2	20.00	P-110	Yes	44.30	Yes		GBCD	2,420.6	13,827.41
323	312	Casing Joints	5 1/2	20.00	P-110	Yes	44.32	Yes		GBCD	2,376.3	13,871.73
324	313	Casing Joints	5 1/2	20.00	P-110	Yes	44.30	Yes		GBCD	2,332.0	13,916.03
325	314	Casing Joints	5 1/2	20.00	P-110	Yes	44.31	Yes		GBCD	2,287.7	13,960.34
326	315	Casing Joints	5 1/2	20.00	P-110	Yes	44.33	Yes		GBCD	2,243.3	14,004.67
327	316	Casing Joints	5 1/2	20.00	P-110	Yes	43.54	Yes		GBCD	2,199.8	14,048.21
328	317	Casing Joints	5 1/2	20.00	P-110	Yes	43.53	Yes		GBCD	2,156.3	14,091.74
329	318	Casing Joints	5 1/2	20.00	P-110	Yes	44.00	Yes		GBCD	2,112.3	14,135.74
330	319	Casing Joints	5 1/2	20.00	P-110	Yes	44.33	Yes		GBCD	2,067.9	14,180.07
331	320	Casing Joints	5 1/2	20.00	P-110	Yes	44.31	Yes		GBCD	2,023.6	14,224.38
332	321	Casing Joints	5 1/2	20.00	P-110	Yes	43.23	Yes		GBCD	1,980.4	14,267.61
333	322	Casing Joints	5 1/2	20.00	P-110	Yes	43.91	Yes		GBCD	1,936.5	14,311.52
334	323	Casing Joints	5 1/2	20.00	P-110	Yes	43.96	Yes		GBCD	1,892.5	14,355.48
335	324	Casing Joints	5 1/2	20.00	P-110	Yes	43.93	Yes		GBCD	1,848.6	14,399.41
336	325	Casing Joints	5 1/2	20.00	P-110	Yes	43.90	Yes		GBCD	1,804.7	14,443.31
337	326	Casing Joints	5 1/2	20.00	P-110	Yes	44.26	Yes		GBCD	1,760.4	14,487.57
338	327	Casing Joints	5 1/2	20.00	P-110	Yes	43.60	Yes		GBCD	1,716.8	14,531.17
339	328	Casing Joints	5 1/2	20.00	P-110	Yes	44.30	Yes		GBCD	1,672.5	14,575.47
340	329	Casing Joints	5 1/2	20.00	P-110	Yes	44.28	Yes		GBCD	1,628.3	14,619.75
341	330	Casing Joints	5 1/2	20.00	P-110	Yes	43.92	Yes		GBCD	1,584.3	14,663.67
342	331	Casing Joints	5 1/2	20.00	P-110	Yes	43.58	Yes		GBCD	1,540.8	14,707.25
343	332	Casing Joints	5 1/2	20.00	P-110	Yes	43.62	Yes		GBCD	1,497.1	14,750.87
344	333	Casing Joints	5 1/2	20.00	P-110	Yes	44.34	Yes		GBCD	1,452.8	14,795.21
345	334	Casing Joints	5 1/2	20.00	P-110	Yes	44.30	Yes		GBCD	1,408.5	14,839.51
346	335	Casing Joints	5 1/2	20.00	P-110	Yes	44.29	Yes		GBCD	1,364.2	14,883.80
347	336	Casing Joints	5 1/2	20.00	P-110	Yes	44.30	Yes		GBCD	1,319.9	14,928.10
348	337	Casing Joints	5 1/2	20.00	P-110	Yes	44.34	Yes		GBCD	1,275.6	14,972.44
349	338	Casing Joints	5 1/2	20.00	P-110	Yes	44.24	Yes		GBCD	1,231.3	15,016.68
350	339	Casing Joints	5 1/2	20.00	P-110	Yes	43.65	Yes		GBCD	1,187.7	15,060.33
351	340	Casing Joints	5 1/2	20.00	P-110	Yes	44.24	Yes		GBCD	1,143.4	15,104.57
352	341	Casing Joints	5 1/2	20.00	P-110	Yes	44.30	Yes		GBCD	1,099.1	15,148.87



Centralizer Depths

Well Name: KODAK SOUTH 15C

Production, Set Depth: 16,248.0ftKB

API 05123520970000		Surface Legal Location SESW 26 6N 67W		Field Name Wattenberg		State CO		Well Configuration Type Horizontal	
Ground Elevation (ft) 4,743.00	Original KB Elevation (ft) 4,771.00	KB-Ground Distance (ft) 28.00	Spud Date 7/17/2023 22:00	Rig Release Date 7/20/2023 23:00	On Production Date	Abandon Date			

Casing Run Tally												
Run #	Ref #	Item Des	OD (in)	Wt (lb/ft)	Grade	Run?	Len (ft)	Centralized?	Ext Jw/ry	Connections	Top (ftKB)	Cum Len (ft)
353	342	Casing Joints	5 1/2	20.00	P-110	Yes	43.31	Yes		GBCD	1,055.8	15,192.18
354	343	Casing Joints	5 1/2	20.00	P-110	Yes	44.29	Yes		GBCD	1,011.5	15,236.47
355	344	Casing Joints	5 1/2	20.00	P-110	Yes	44.31	Yes		GBCD	967.2	15,280.78
356	345	Casing Joints	5 1/2	20.00	P-110	Yes	44.28	Yes		GBCD	922.9	15,325.06
357	346	Casing Joints	5 1/2	20.00	P-110	Yes	44.28	Yes		GBCD	878.7	15,369.34
358	347	Casing Joints	5 1/2	20.00	P-110	Yes	43.14	Yes		GBCD	835.5	15,412.48
359	348	Casing Joints	5 1/2	20.00	P-110	Yes	44.30	Yes		GBCD	791.2	15,456.78
360	349	Casing Joints	5 1/2	20.00	P-110	Yes	44.33	Yes		GBCD	746.9	15,501.11
361	350	Casing Joints	5 1/2	20.00	P-110	Yes	43.78	Yes		GBCD	703.1	15,544.89
362	351	Casing Joints	5 1/2	20.00	P-110	Yes	43.93	Yes		GBCD	659.2	15,588.82
363	352	Casing Joints	5 1/2	20.00	P-110	Yes	44.31	Yes		GBCD	614.9	15,633.13
364	353	Casing Joints	5 1/2	20.00	P-110	Yes	44.25	Yes		GBCD	570.6	15,677.38
365	354	Casing Joints	5 1/2	20.00	P-110	Yes	44.30	Yes		GBCD	526.3	15,721.68