

# Cement Post Job Report

**Client:** PDC Energy

**Well Name:** Kodak South 11C

**API #:** 05-123-52104

**Job Date:** August 7, 2023

**Job Type:** New Well - 5.5" Production String

**Cement Company & Contact:** EXERO Well Integrity -  
Cheve Meyer 720-239-3819



ROCK SOLID  
WELL INTEGRITY  
SOLUTIONS

## TREATMENT REPORT

CLIENT	WELL	RIG	JOB TYPE	THREAD TYPE	WELLHEAD CONNECTION
<b>PDC Energy</b>	<b>Kodak South 11C</b>	<b>Ensign 769</b>	<b>Production</b>	<b>Buttress</b>	<b>5 1/2" HP Cement Head</b>

WELL MD (FT)	WELL TVD (FT)	DEVIATION (DEG)	NUMBER OF STAGES	BHST (DEG)	BHCT (DEG)
<b>19052</b>	<b>7139</b>	<b>90</b>	<b>1</b>	<b>230</b>	<b>230</b>

PACKER/RETAINER/CIBP/DV TOOL DEPTHS	TOOL TYPE	TOP OF PERFS (FT)	BOTTOM OF PERFS (FT)	NUMBER OF HOLES
	<b>PACKER</b>			

CASING/TUBING/DP DETAILS								
STRING TYPE	GRADE	OD"	WT/FT	ID"	OH SIZE"	% EXCESS LEAD	% EXCESS TAIL	TOTAL DEPTH (FT)
<b>Casing</b>		<b>9.625</b>	<b>36</b>	<b>8.921</b>	<b>12.25</b>			<b>1694</b>
<b>Casing</b>	<b>P-110</b>	<b>5.5</b>	<b>20</b>	<b>4.778</b>	<b>8.5</b>	<b>0</b>	<b>0</b>	<b>19041</b>
MAXIMUM CASING/TUBING/DP PSI			<b>9888</b>			MAXIMUM ANNULAR PSI		<b>4100</b>

Mud Type	OBM	Rotate Y,N	No	Circulation Data				Water Requirements (bbls)	
Mud ppg	<b>10.6</b>	Rate (rpm)		Circulate Time (hrs)		<b>2</b>		Spacers	<b>140</b>
Flow Temp	<b>161</b>	Torque Val.		Circulation Rate (bpm)		<b>10</b>		Stage 1 Lead	<b>121</b>
Vis. Sec/qt	<b>48</b>	Time (hr)		Full Circulation ? (Y,N,P)		<b>Yes</b>		Stage 1 Tail	<b>272</b>
PV (cP)	<b>17</b>	Pipe Reciprocation		Gas Present (Y,N)		<b>NO</b>	Units	Stage 2 Lead	
Yield Pt	<b>6</b>	Recip Y,N	<b>No</b>	Centralizers/Plugs				Stage 2 Tail	
10 sec gel	<b>5</b>	Stroke (ft)		Quantity & Type		<b>Customer Provided</b>		Displacement	<b>422</b>
10 min gel	<b>10</b>	Recip time		Top Plug/Type		<b>Customer Provided</b>		Wash up	<b>20</b>
30 min gel	<b>12</b>	Stuck ?		Bottom Plug/Type		<b>Customer Provided</b>		Total + 10% Safety	<b>1073</b>

Preflush & Spacers		Stage 1 Lead - Class G		Stage 1 Tail - Class G		Stage 2 Lead		Stage 2 Tail		Displacement	
Spacer 1	<b>Spacer</b>	Density	<b>12.9</b>	Density	<b>13.7</b>	Density		Density		Fluid Type	<b>Water</b>
		Sacks	<b>1381</b>	Sacks	<b>1724</b>	Sacks		Sacks		Dens. ppg	<b>8.34</b>
		Vol/bbbls	<b>255.8</b>	Vol/bbbls	<b>420.7</b>	Vol/bbbls	<b>0.0</b>	Vol/bbbls	<b>0.0</b>	Vol. bbl	<b>422</b>
		Rate	<b>11</b>	Rate	<b>11</b>	Rate		Rate		Rate bpm	<b>10</b>
Spacer 2		Yield	<b>1.04</b>	Yield	<b>1.37</b>	Yield		Yield		Clay Stay?	<b>NO</b>
		Gal/Sk	<b>3.68</b>	Gal/Sk	<b>6.63</b>	Gal/Sk		Gal/Sk		Biocide ?	<b>YES</b>
		% Excess	<b>0</b>	% Excess	<b>0</b>	% Excess		% Excess		Slow @ bbl	<b>402</b>
		TOL (ft)	<b>2082</b>	TOT (ft)	<b>8357</b>	TOL (ft)		TOT (ft)		Bump PSI	<b>2500</b>

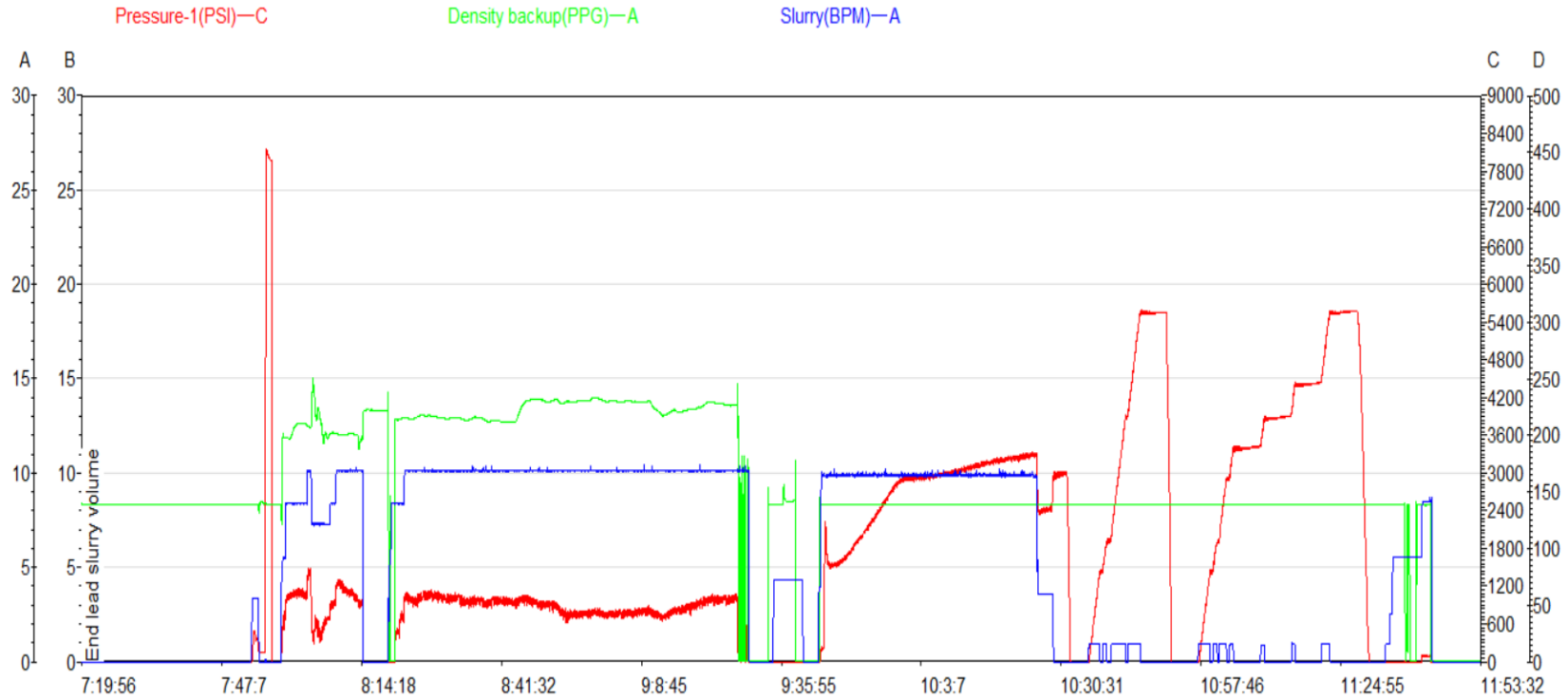
Final Displacement (bbbls)	<b>422</b>
Bump Plug?	<b>YES</b>
Final Bump Pressure (psi)	<b>3000</b>
Full Returns throughout job?	<b>FULL</b>
Vol away/Time when returns lost	<b>NA</b>
Vol away when returns were regained	<b>NA</b>
Spacer to Surface?	<b>YES</b>
Spacer volume returned (bbbls)	<b>380</b>
Cement to surface?	<b>NO</b>
Cement volume to surface stage 1	<b>NA</b>
Cement volume to surface stage 2	<b>NA</b>

Surface Top Out Details-Pumped		Job Summary Additional Chems Used	
Cement Type		MFC 47 (gal)	<b>70</b>
Dens. ppg	<b>N/A</b>	MFC 67 (gal)	<b>168</b>
Sacks qty	<b>N/A</b>	Defoamer (gal)	<b>20</b>
Gal/sk	<b>N/A</b>	Biocide (gal)	<b>15</b>
Yield	<b>N/A</b>	Corr. Inhib (gal)	<b>0</b>
Calcium Chlor. Used?	<b>NA</b>	Fiber (lbs)	<b>290</b>
Top out pipe used ?	<b>NA</b>	Chloride (lbs)	<b>0</b>
Annulus holding?	<b>NA</b>	Retarder (lbs)	<b>0</b>
		Clay Stabilizer (gal)	<b>0</b>
		Other	<b>0</b>

## JOB LOG

CLIENT	WELL	RIG	JOB TYPE	START DATE	Ambient Conditions		
PDC Energy	Kodak South 11C	Ensign 769	Production	8/7/2023	Temp / Hum / Air Press 81 Deg F / 28 % / 25.09 in		
DATE (dd/mm)	TIME (hh:mm)	DENSITY (ppg)	RATE (bpm)	VOL. (bbl)	TOTAL VOL.	PRESSURE	TREATMENT COMMENTS
6-Aug	7:00:00 PM						CREW CALLED OUT FOR AN ON LOCATION TIME OF 03:00 AM 8/7/23
8/7/2023	12:00:00 AM						CREW ARRIVES ON LOCATION
	5:30:00 AM						CASING LANDED AT 19044/RUN TWO BOTTOMS UP
	5:45:00 AM						SPOT IN AND RIG UP EQUIPMENT
	7:20:00 AM						SAFETY MEETING
	7:40:00 AM						RIG UP FLOOR
	7:45:00 AM	8.3	3.4	3	3	420	FILL LINES
	7:50:00 AM	8.3	1.0	1	1	8148	PRESSURE TEST
	7:53:00 AM	12	10.0	140	140	1230	PUMP 140 BBLS OF SPACER WITH SURFACTANT AND FIBER
	8:10:00 AM						SHUT IN/DROP BOTTOM PLUG
	8:13:00 AM	12.9	10.0	256	256	1082	PUMP 256 BBLS OF LEAD CEMENT AT 12.9# (1381 SKS, 1.04 YLD, 3.68 GAL/SK, 121 H2O)
	8:45:00 AM	13.7	10.0	421	421	813	PUMP 421 BBLS OF TAIL CEMENT AT 13.7# (1724 SKS, 1.37 YLD, 6.63 GAL/SK, 272 H2O)
	9:22:00 AM	8.3	10.0	15	15	312	PUMP 15 BBLS OF SUGAR WATER
	9:24:00 AM						SHUT IN/WASH UP PUMPS AND LINES/DROP TOP PLUG
	9:37:00 AM	8.3	10.0	0	10	318	BEGIN DISPLACEMENT WITH 422 BBLS OF FRESHWATER WITH BIOCIDES IN ALL
	9:39:00 AM	8.3	10.0	10	10	1270	FRESHWATER DISPLACEMENT/CAUGHT CEMENT
	9:44:00 AM	8.3	10.0	40	50	1916	FRESHWATER DISPLACEMENT
	9:49:00 AM	8.3	10.0	50	100	2470	FRESHWATER DISPLACEMENT
	9:54:00 AM	8.3	10.0	50	150	3010	FRESHWATER DISPLACEMENT
	9:59:00 AM	8.3	10.0	50	200	3058	FRESHWATER DISPLACEMENT
	10:06:00 AM	8.3	10.0	50	250	3150	FRESHWATER DISPLACEMENT
	10:11:00 AM	8.3	10.0	50	300	3320	FRESHWATER DISPLACEMENT
	10:16:00 AM	8.3	10.0	50	350	3380	FRESHWATER DISPLACEMENT
	10:19:00 AM	8.3	10.0	40	390	3410	FRESHWATER DISPLACEMENT
	10:20:00 AM	8.3	4.0	10	400	2500	FRESHWATER DISPLACEMENT/SLOW RATE TO LAND PLUG
	10:22:00 AM	8.3	4.0	22	422	3000	LANDED PLUG ON CALCULATED DISPLACEMENT GOING 500 OVER FCP
	10:27:00 AM	8.3					CHECKED FLOATS/RECEIVED 5 BBLS BACK
	10:32:00 AM	8.3				5900	SET PACKER PER TOOL HAND
	11:27:00 AM	8.3					RIG IN TO STACK/PUMP 40 BBLS TO CLEAN BOP STACK
	11:39:00 AM						RIG DOWN FLOOR/RIG DOWN EQUIPMENT
	11:55:00 AM						FINISH PAPER WORK
	12:15:00 PM						DEPART LOCATION

# Kodak South 11C Production Pump Chart – Pressure / Rate / Density





## Centralizer Depths

**Well Name: KODAK SOUTH 11C**

**Production, Set Depth: 19,041.0ftKB**

API 05123521040000		Surface Legal Location SESW 26 6N 67W		Field Name Wattenberg		State CO		Well Configuration Type Horizontal			
Ground Elevation (ft) 4,743.00		Original KB Elevation (ft) 4,771.00		KB-Ground Distance (ft) 28.00		Spud Date 8/2/2023 16:00		Rig Release Date 8/7/2023 13:30		On Production Date Abandon Date	

### Casing Run Tally

Run #	Ref #	Item Des	OD (in)	Wt (lb/ft)	Grade	Run?	Len (ft)	Centralized?	Ext Jwry	Connections	Top (ftKB)	Cum Len (ft)
7	1	Casing Joints	5 1/2	20.00	P-110	Yes	44.34	Yes		GBCD	18,962.5	78.48
9	3	Casing Joints	5 1/2	20.00	P-110	Yes	44.32	Yes		GBCD	18,875.4	165.60
11	5	Casing Joints	5 1/2	20.00	P-110	Yes	44.35	Yes		GBCD	18,786.7	254.26
13	7	Casing Joints	5 1/2	20.00	P-110	Yes	44.29	Yes		GBCD	18,708.9	332.10
15	9	Casing Joints	5 1/2	20.00	P-110	Yes	38.85	Yes		GBCD	18,625.8	415.19
17		Marker Joint	5 1/2	20.00	P-110	Yes	22.10	Yes		GBCD	18,559.5	481.54
19	12	Casing Joints	5 1/2	20.00	P-110	Yes	44.20	Yes		GBCD	18,471.0	570.00
21	14	Casing Joints	5 1/2	20.00	P-110	Yes	44.31	Yes		GBCD	18,382.4	658.62
23	16	Casing Joints	5 1/2	20.00	P-110	Yes	42.84	Yes		GBCD	18,295.3	745.70
25	18	Casing Joints	5 1/2	20.00	P-110	Yes	44.30	Yes		GBCD	18,207.2	833.83
27	20	Casing Joints	5 1/2	20.00	P-110	Yes	40.22	Yes		GBCD	18,122.8	918.20
29	22	Casing Joints	5 1/2	20.00	P-110	Yes	43.60	Yes		GBCD	18,036.5	1,004.52
31	24	Casing Joints	5 1/2	20.00	P-110	Yes	44.26	Yes		GBCD	17,948.1	1,092.93
33	26	Casing Joints	5 1/2	20.00	P-110	Yes	44.25	Yes		GBCD	17,859.5	1,181.48
35	28	Casing Joints	5 1/2	20.00	P-110	Yes	44.24	Yes		GBCD	17,771.7	1,269.34
37	30	Casing Joints	5 1/2	20.00	P-110	Yes	44.30	Yes		GBCD	17,683.1	1,357.94
39	32	Casing Joints	5 1/2	20.00	P-110	Yes	43.62	Yes		GBCD	17,595.2	1,445.84
41	34	Casing Joints	5 1/2	20.00	P-110	Yes	44.28	Yes		GBCD	17,506.6	1,534.38
43	36	Casing Joints	5 1/2	20.00	P-110	Yes	44.28	Yes		GBCD	17,418.0	1,622.98
45	38	Casing Joints	5 1/2	20.00	P-110	Yes	44.27	Yes		GBCD	17,329.5	1,711.51
47	40	Casing Joints	5 1/2	20.00	P-110	Yes	44.28	Yes		GBCD	17,240.9	1,800.07
49	42	Casing Joints	5 1/2	20.00	P-110	Yes	43.60	Yes		GBCD	17,153.0	1,887.97
51	44	Casing Joints	5 1/2	20.00	P-110	Yes	44.29	Yes		GBCD	17,064.5	1,976.53
53	46	Casing Joints	5 1/2	20.00	P-110	Yes	43.34	Yes		GBCD	16,976.8	2,064.16
55	48	Casing Joints	5 1/2	20.00	P-110	Yes	44.26	Yes		GBCD	16,889.3	2,151.66
57	50	Casing Joints	5 1/2	20.00	P-110	Yes	44.30	Yes		GBCD	16,800.8	2,240.24
59	52	Casing Joints	5 1/2	20.00	P-110	Yes	44.30	Yes		GBCD	16,712.2	2,328.82
61	54	Casing Joints	5 1/2	20.00	P-110	Yes	44.31	Yes		GBCD	16,625.4	2,415.58
63	56	Casing Joints	5 1/2	20.00	P-110	Yes	44.29	Yes		GBCD	16,536.8	2,504.17
65	58	Casing Joints	5 1/2	20.00	P-110	Yes	44.27	Yes		GBCD	16,448.3	2,592.74
67	60	Casing Joints	5 1/2	20.00	P-110	Yes	43.58	Yes		GBCD	16,360.4	2,680.65



## Centralizer Depths

**Well Name: KODAK SOUTH 11C**

**Production, Set Depth: 19,041.0ftKB**

API 05123521040000		Surface Legal Location SESW 26 6N 67W		Field Name Wattenberg		State CO		Well Configuration Type Horizontal			
Ground Elevation (ft) 4,743.00	Original KB Elevation (ft) 4,771.00	KB-Ground Distance (ft) 28.00	Spud Date 8/2/2023 16:00	Rig Release Date 8/7/2023 13:30	On Production Date	Abandon Date					

### Casing Run Tally

Run #	Ref #	Item Des	OD (in)	Wt (lb/ft)	Grade	Run?	Len (ft)	Centralized?	Ext Jw/ry	Connections	Top (ftKB)	Cum Len (ft)
69	62	Casing Joints	5 1/2	20.00	P-110	Yes	44.31	Yes		GBCD	16,271.8	2,769.22
71	64	Casing Joints	5 1/2	20.00	P-110	Yes	44.34	Yes		GBCD	16,183.8	2,857.16
73	66	Casing Joints	5 1/2	20.00	P-110	Yes	44.27	Yes		GBCD	16,096.0	2,945.04
75	68	Casing Joints	5 1/2	20.00	P-110	Yes	41.38	Yes		GBCD	16,010.3	3,030.72
77	70	Casing Joints	5 1/2	20.00	P-110	Yes	43.77	Yes		GBCD	15,922.2	3,118.79
79	72	Casing Joints	5 1/2	20.00	P-110	Yes	44.34	Yes		GBCD	15,834.0	3,206.99
81	74	Casing Joints	5 1/2	20.00	P-110	Yes	44.29	Yes		GBCD	15,746.1	3,294.92
83	76	Casing Joints	5 1/2	20.00	P-110	Yes	44.29	Yes		GBCD	15,657.5	3,383.51
85	78	Casing Joints	5 1/2	20.00	P-110	Yes	43.90	Yes		GBCD	15,570.4	3,470.61
87	80	Casing Joints	5 1/2	20.00	P-110	Yes	44.30	Yes		GBCD	15,481.8	3,559.23
89	82	Casing Joints	5 1/2	20.00	P-110	Yes	44.30	Yes		GBCD	15,393.2	3,647.82
91	84	Casing Joints	5 1/2	20.00	P-110	Yes	44.24	Yes		GBCD	15,304.6	3,736.36
93	86	Casing Joints	5 1/2	20.00	P-110	Yes	44.24	Yes		GBCD	15,216.1	3,824.89
95	88	Casing Joints	5 1/2	20.00	P-110	Yes	43.86	Yes		GBCD	15,128.0	3,913.05
97	90	Casing Joints	5 1/2	20.00	P-110	Yes	44.31	Yes		GBCD	15,047.6	3,993.40
99	92	Casing Joints	5 1/2	20.00	P-110	Yes	44.30	Yes		GBCD	14,962.8	4,078.20
101	94	Casing Joints	5 1/2	20.00	P-110	Yes	43.33	Yes		GBCD	14,875.3	4,165.75
103	96	Casing Joints	5 1/2	20.00	P-110	Yes	44.27	Yes		GBCD	14,786.7	4,254.33
105	98	Casing Joints	5 1/2	20.00	P-110	Yes	44.30	Yes		GBCD	14,698.1	4,342.91
107	100	Casing Joints	5 1/2	20.00	P-110	Yes	43.92	Yes		GBCD	14,609.9	4,431.13
109	102	Casing Joints	5 1/2	20.00	P-110	Yes	44.27	Yes		GBCD	14,521.3	4,519.69
111	104	Casing Joints	5 1/2	20.00	P-110	Yes	44.30	Yes		GBCD	14,433.4	4,607.59
113	106	Casing Joints	5 1/2	20.00	P-110	Yes	44.30	Yes		GBCD	14,345.5	4,695.47
115	108	Casing Joints	5 1/2	20.00	P-110	Yes	43.68	Yes		GBCD	14,257.5	4,783.47
117	110	Casing Joints	5 1/2	20.00	P-110	Yes	43.42	Yes		GBCD	14,169.8	4,871.19
119	112	Casing Joints	5 1/2	20.00	P-110	Yes	44.30	Yes		GBCD	14,081.3	4,959.73
121	114	Casing Joints	5 1/2	20.00	P-110	Yes	43.46	Yes		GBCD	13,993.5	5,047.47
123	116	Casing Joints	5 1/2	20.00	P-110	Yes	44.28	Yes		GBCD	13,906.1	5,134.90
125	118	Casing Joints	5 1/2	20.00	P-110	Yes	44.30	Yes		GBCD	13,817.5	5,223.50
127	120	Casing Joints	5 1/2	20.00	P-110	Yes	44.30	Yes		GBCD	13,729.3	5,311.66
129	122	Casing Joints	5 1/2	20.00	P-110	Yes	44.27	Yes		GBCD	13,641.2	5,399.80



## Centralizer Depths

**Well Name: KODAK SOUTH 11C**

**Production, Set Depth: 19,041.0ftKB**

API 05123521040000		Surface Legal Location SESW 26 6N 67W		Field Name Wattenberg		State CO		Well Configuration Type Horizontal			
Ground Elevation (ft) 4,743.00	Original KB Elevation (ft) 4,771.00	KB-Ground Distance (ft) 28.00	Spud Date 8/2/2023 16:00	Rig Release Date 8/7/2023 13:30	On Production Date	Abandon Date					

### Casing Run Tally

Run #	Ref #	Item Des	OD (in)	Wt (lb/ft)	Grade	Run?	Len (ft)	Centralized?	Ext Jwry	Connections	Top (ftKB)	Cum Len (ft)
131	124	Casing Joints	5 1/2	20.00	P-110	Yes	44.30	Yes		GBCD	13,552.6	5,488.39
133	126	Casing Joints	5 1/2	20.00	P-110	Yes	44.28	Yes		GBCD	13,464.7	5,576.29
135	128	Casing Joints	5 1/2	20.00	P-110	Yes	43.01	Yes		GBCD	13,377.4	5,663.60
137	130	Casing Joints	5 1/2	20.00	P-110	Yes	43.65	Yes		GBCD	13,289.5	5,751.53
139		Marker Joint	5 1/2	20.00	P-110	Yes	22.19	Yes		GBCD	13,223.4	5,817.64
141	133	Casing Joints	5 1/2	20.00	P-110	Yes	43.88	Yes		GBCD	13,135.2	5,905.78
143	135	Casing Joints	5 1/2	20.00	P-110	Yes	44.29	Yes		GBCD	13,046.9	5,994.09
145	137	Casing Joints	5 1/2	20.00	P-110	Yes	43.62	Yes		GBCD	12,959.0	6,081.99
147	139	Casing Joints	5 1/2	20.00	P-110	Yes	44.30	Yes		GBCD	12,870.4	6,170.59
149	141	Casing Joints	5 1/2	20.00	P-110	Yes	44.25	Yes		GBCD	12,781.9	6,259.12
151	143	Casing Joints	5 1/2	20.00	P-110	Yes	43.66	Yes		GBCD	12,695.7	6,345.33
153	145	Casing Joints	5 1/2	20.00	P-110	Yes	44.30	Yes		GBCD	12,606.8	6,434.16
155	147	Casing Joints	5 1/2	20.00	P-110	Yes	43.77	Yes		GBCD	12,519.3	6,521.71
157	149	Casing Joints	5 1/2	20.00	P-110	Yes	43.74	Yes		GBCD	12,431.3	6,609.73
159	151	Casing Joints	5 1/2	20.00	P-110	Yes	42.91	Yes		GBCD	12,344.1	6,696.93
161	153	Casing Joints	5 1/2	20.00	P-110	Yes	44.28	Yes		GBCD	12,255.5	6,785.46
163	155	Casing Joints	5 1/2	20.00	P-110	Yes	44.30	Yes		GBCD	12,167.0	6,873.99
165	157	Casing Joints	5 1/2	20.00	P-110	Yes	42.32	Yes		GBCD	12,080.4	6,960.61
167	159	Casing Joints	5 1/2	20.00	P-110	Yes	44.22	Yes		GBCD	11,991.9	7,049.14
169	161	Casing Joints	5 1/2	20.00	P-110	Yes	44.29	Yes		GBCD	11,904.1	7,136.90
171	163	Casing Joints	5 1/2	20.00	P-110	Yes	42.15	Yes		GBCD	11,817.7	7,223.34
173	165	Casing Joints	5 1/2	20.00	P-110	Yes	43.50	Yes		GBCD	11,736.7	7,304.28
175	167	Casing Joints	5 1/2	20.00	P-110	Yes	44.30	Yes		GBCD	11,649.2	7,391.80
177	169	Casing Joints	5 1/2	20.00	P-110	Yes	39.33	Yes		GBCD	11,565.6	7,475.43
179	171	Casing Joints	5 1/2	20.00	P-110	Yes	44.31	Yes		GBCD	11,477.0	7,564.00
181	173	Casing Joints	5 1/2	20.00	P-110	Yes	44.32	Yes		GBCD	11,390.2	7,650.77
183	175	Casing Joints	5 1/2	20.00	P-110	Yes	44.30	Yes		GBCD	11,301.6	7,739.39
185	177	Casing Joints	5 1/2	20.00	P-110	Yes	42.97	Yes		GBCD	11,215.0	7,826.01
187	179	Casing Joints	5 1/2	20.00	P-110	Yes	44.31	Yes		GBCD	11,127.9	7,913.11
189	181	Casing Joints	5 1/2	20.00	P-110	Yes	44.27	Yes		GBCD	11,039.3	8,001.69
191	183	Casing Joints	5 1/2	20.00	P-110	Yes	43.84	Yes		GBCD	10,951.2	8,089.81



## Centralizer Depths

**Well Name: KODAK SOUTH 11C**

**Production, Set Depth: 19,041.0ftKB**

API 05123521040000		Surface Legal Location SESW 26 6N 67W		Field Name Wattenberg		State CO		Well Configuration Type Horizontal			
Ground Elevation (ft) 4,743.00	Original KB Elevation (ft) 4,771.00	KB-Ground Distance (ft) 28.00	Spud Date 8/2/2023 16:00	Rig Release Date 8/7/2023 13:30	On Production Date	Abandon Date					

### Casing Run Tally

Run #	Ref #	Item Des	OD (in)	Wt (lb/ft)	Grade	Run?	Len (ft)	Centralized?	Ext Jw/ry	Connections	Top (ftKB)	Cum Len (ft)
193	185	Casing Joints	5 1/2	20.00	P-110	Yes	43.42	Yes		GBCD	10,863.5	8,177.53
195	187	Casing Joints	5 1/2	20.00	P-110	Yes	41.90	Yes		GBCD	10,777.3	8,263.68
197	189	Casing Joints	5 1/2	20.00	P-110	Yes	44.29	Yes		GBCD	10,689.4	8,351.61
199	191	Casing Joints	5 1/2	20.00	P-110	Yes	44.27	Yes		GBCD	10,600.9	8,440.15
201	193	Casing Joints	5 1/2	20.00	P-110	Yes	44.32	Yes		GBCD	10,513.4	8,527.62
203	195	Casing Joints	5 1/2	20.00	P-110	Yes	44.28	Yes		GBCD	10,424.8	8,616.18
205	197	Casing Joints	5 1/2	20.00	P-110	Yes	44.25	Yes		GBCD	10,336.3	8,704.68
207	199	Casing Joints	5 1/2	20.00	P-110	Yes	44.25	Yes		GBCD	10,249.8	8,791.20
209	201	Casing Joints	5 1/2	20.00	P-110	Yes	44.28	Yes		GBCD	10,161.2	8,879.76
211	203	Casing Joints	5 1/2	20.00	P-110	Yes	44.25	Yes		GBCD	10,073.4	8,967.56
213	205	Casing Joints	5 1/2	20.00	P-110	Yes	44.25	Yes		GBCD	9,984.9	9,056.13
215	207	Casing Joints	5 1/2	20.00	P-110	Yes	44.24	Yes		GBCD	9,896.4	9,144.65
217	209	Casing Joints	5 1/2	20.00	P-110	Yes	44.25	Yes		GBCD	9,808.6	9,232.42
219	211	Casing Joints	5 1/2	20.00	P-110	Yes	44.24	Yes		GBCD	9,720.1	9,320.91
221	213	Casing Joints	5 1/2	20.00	P-110	Yes	43.59	Yes		GBCD	9,632.3	9,408.75
223	215	Casing Joints	5 1/2	20.00	P-110	Yes	43.50	Yes		GBCD	9,544.6	9,496.41
225	217	Casing Joints	5 1/2	20.00	P-110	Yes	40.55	Yes		GBCD	9,460.1	9,580.89
227	219	Casing Joints	5 1/2	20.00	P-110	Yes	41.88	Yes		GBCD	9,374.4	9,666.63
229	221	Casing Joints	5 1/2	20.00	P-110	Yes	43.11	Yes		GBCD	9,287.0	9,754.04
231	223	Casing Joints	5 1/2	20.00	P-110	Yes	44.02	Yes		GBCD	9,199.3	9,841.69
233	225	Casing Joints	5 1/2	20.00	P-110	Yes	44.20	Yes		GBCD	9,114.3	9,926.71
235	227	Casing Joints	5 1/2	20.00	P-110	Yes	43.66	Yes		GBCD	9,027.8	10,013.20
237	229	Casing Joints	5 1/2	20.00	P-110	Yes	44.20	Yes		GBCD	8,939.3	10,101.70
239	231	Casing Joints	5 1/2	20.00	P-110	Yes	44.32	Yes		GBCD	8,850.8	10,190.23
241	233	Casing Joints	5 1/2	20.00	P-110	Yes	39.26	Yes		GBCD	8,767.3	10,273.74
243	235	Casing Joints	5 1/2	20.00	P-110	Yes	40.15	Yes		GBCD	8,683.9	10,357.15
245	237	Casing Joints	5 1/2	20.00	P-110	Yes	44.30	Yes		GBCD	8,595.9	10,445.07
247	239	Casing Joints	5 1/2	20.00	P-110	Yes	44.28	Yes		GBCD	8,517.3	10,523.73
249	241	Casing Joints	5 1/2	20.00	P-110	Yes	44.28	Yes		GBCD	8,428.7	10,612.30
251	243	Casing Joints	5 1/2	20.00	P-110	Yes	43.70	Yes		GBCD	8,340.7	10,700.30
253	245	Casing Joints	5 1/2	20.00	P-110	Yes	42.84	Yes		GBCD	8,253.6	10,787.41



## Centralizer Depths

**Well Name: KODAK SOUTH 11C**

**Production, Set Depth: 19,041.0ftKB**

API 05123521040000		Surface Legal Location SESW 26 6N 67W		Field Name Wattenberg		State CO		Well Configuration Type Horizontal			
Ground Elevation (ft) 4,743.00	Original KB Elevation (ft) 4,771.00	KB-Ground Distance (ft) 28.00	Spud Date 8/2/2023 16:00	Rig Release Date 8/7/2023 13:30	On Production Date	Abandon Date					

### Casing Run Tally

Run #	Ref #	Item Des	OD (in)	Wt (lb/ft)	Grade	Run?	Len (ft)	Centralized?	Ext Jwry	Connections	Top (ftKB)	Cum Len (ft)
255	247	Casing Joints	5 1/2	20.00	P-110	Yes	44.28	Yes		GBCD	8,165.0	10,875.99
257	249	Casing Joints	5 1/2	20.00	P-110	Yes	43.65	Yes		GBCD	8,077.1	10,963.89
259	251	Casing Joints	5 1/2	20.00	P-110	Yes	44.30	Yes		GBCD	7,989.8	11,051.19
261	253	Casing Joints	5 1/2	20.00	P-110	Yes	44.22	Yes		GBCD	7,901.3	11,139.70
263	255	Casing Joints	5 1/2	20.00	P-110	Yes	44.30	Yes		GBCD	7,812.7	11,228.27
265	257	Casing Joints	5 1/2	20.00	P-110	Yes	44.27	Yes		GBCD	7,724.2	11,316.80
267	259	Casing Joints	5 1/2	20.00	P-110	Yes	43.48	Yes		GBCD	7,636.5	11,404.53
269	261	Casing Joints	5 1/2	20.00	P-110	Yes	44.31	Yes		GBCD	7,548.6	11,492.37
271	263	Casing Joints	5 1/2	20.00	P-110	Yes	44.28	Yes		GBCD	7,460.1	11,580.93
272		Marker Joint	5 1/2	20.00	P-110	Yes	21.78	Yes		GBCD	7,438.3	11,602.71
273	264	Casing Joints	5 1/2	20.00	P-110	Yes	44.28	Yes		GBCD	7,394.0	11,646.99
274	265	Casing Joints	5 1/2	20.00	P-110	Yes	41.97	Yes		GBCD	7,352.0	11,688.96
275	266	Casing Joints	5 1/2	20.00	P-110	Yes	44.30	Yes		GBCD	7,307.7	11,733.26
276	267	Casing Joints	5 1/2	20.00	P-110	Yes	44.28	Yes		GBCD	7,263.5	11,777.54
277	268	Casing Joints	5 1/2	20.00	P-110	Yes	44.30	Yes		GBCD	7,219.2	11,821.84
278	269	Casing Joints	5 1/2	20.00	P-110	Yes	43.60	Yes		GBCD	7,175.6	11,865.44
279	270	Casing Joints	5 1/2	20.00	P-110	Yes	44.26	Yes		GBCD	7,131.3	11,909.70
280	271	Casing Joints	5 1/2	20.00	P-110	Yes	44.30	Yes		GBCD	7,087.0	11,954.00
281	272	Casing Joints	5 1/2	20.00	P-110	Yes	44.28	Yes		GBCD	7,042.7	11,998.28
282	273	Casing Joints	5 1/2	20.00	P-110	Yes	44.30	Yes		GBCD	6,998.4	12,042.58
283	274	Casing Joints	5 1/2	20.00	P-110	Yes	44.28	Yes		GBCD	6,954.1	12,086.86
284	275	Casing Joints	5 1/2	20.00	P-110	Yes	44.30	Yes		GBCD	6,909.8	12,131.16
285	276	Casing Joints	5 1/2	20.00	P-110	Yes	43.18	Yes		GBCD	6,866.7	12,174.34
286	277	Casing Joints	5 1/2	20.00	P-110	Yes	44.30	Yes		GBCD	6,822.4	12,218.64
287	278	Casing Joints	5 1/2	20.00	P-110	Yes	43.65	Yes		GBCD	6,778.7	12,262.29
288	279	Casing Joints	5 1/2	20.00	P-110	Yes	44.27	Yes		GBCD	6,734.4	12,306.56
289	280	Casing Joints	5 1/2	20.00	P-110	Yes	44.30	Yes		GBCD	6,690.1	12,350.86
290	281	Casing Joints	5 1/2	20.00	P-110	Yes	43.70	Yes		GBCD	6,646.4	12,394.56
291	282	Casing Joints	5 1/2	20.00	P-110	Yes	44.28	Yes		GBCD	6,602.2	12,438.84
292	283	Casing Joints	5 1/2	20.00	P-110	Yes	43.34	Yes		GBCD	6,558.8	12,482.18
293	284	Casing Joints	5 1/2	20.00	P-110	Yes	44.28	Yes		GBCD	6,514.5	12,526.46



## Centralizer Depths

**Well Name: KODAK SOUTH 11C**

**Production, Set Depth: 19,041.0ftKB**

API 05123521040000		Surface Legal Location SESW 26 6N 67W		Field Name Wattenberg		State CO		Well Configuration Type Horizontal			
Ground Elevation (ft) 4,743.00	Original KB Elevation (ft) 4,771.00	KB-Ground Distance (ft) 28.00	Spud Date 8/2/2023 16:00	Rig Release Date 8/7/2023 13:30	On Production Date	Abandon Date					

### Casing Run Tally

Run #	Ref #	Item Des	OD (in)	Wt (lb/ft)	Grade	Run?	Len (ft)	Centralized?	Ext Jwry	Connections	Top (ftKB)	Cum Len (ft)
294	285	Casing Joints	5 1/2	20.00	P-110	Yes	44.24	Yes		GBCD	6,470.3	12,570.70
295	286	Casing Joints	5 1/2	20.00	P-110	Yes	43.92	Yes		GBCD	6,426.4	12,614.62
296	287	Casing Joints	5 1/2	20.00	P-110	Yes	43.48	Yes		GBCD	6,382.9	12,658.10
297	288	Casing Joints	5 1/2	20.00	P-110	Yes	44.32	Yes		GBCD	6,338.6	12,702.42
298		Marker Joint	5 1/2	20.00	P-110	Yes	9.84	Yes		GBCD	6,328.7	12,712.26
299	289	Casing Joints	5 1/2	20.00	P-110	Yes	44.32	Yes		GBCD	6,284.4	12,756.58
300	290	Casing Joints	5 1/2	20.00	P-110	Yes	44.31	Yes		GBCD	6,240.1	12,800.89
301	291	Casing Joints	5 1/2	20.00	P-110	Yes	43.94	Yes		GBCD	6,196.2	12,844.83
302	292	Casing Joints	5 1/2	20.00	P-110	Yes	43.60	Yes		GBCD	6,152.6	12,888.43
303	293	Casing Joints	5 1/2	20.00	P-110	Yes	44.27	Yes		GBCD	6,108.3	12,932.70
304	294	Casing Joints	5 1/2	20.00	P-110	Yes	44.28	Yes		GBCD	6,064.0	12,976.98
305	295	Casing Joints	5 1/2	20.00	P-110	Yes	43.62	Yes		GBCD	6,020.4	13,020.60
306	296	Casing Joints	5 1/2	20.00	P-110	Yes	43.60	Yes		GBCD	5,976.8	13,064.20
307	297	Casing Joints	5 1/2	20.00	P-110	Yes	44.27	Yes		GBCD	5,932.5	13,108.47
308	298	Casing Joints	5 1/2	20.00	P-110	Yes	44.29	Yes		GBCD	5,888.2	13,152.76
309	299	Casing Joints	5 1/2	20.00	P-110	Yes	44.26	Yes		GBCD	5,844.0	13,197.02
310	300	Casing Joints	5 1/2	20.00	P-110	Yes	44.28	Yes		GBCD	5,799.7	13,241.30
311	301	Casing Joints	5 1/2	20.00	P-110	Yes	44.30	Yes		GBCD	5,755.4	13,285.60
312	302	Casing Joints	5 1/2	20.00	P-110	Yes	44.28	Yes		GBCD	5,711.1	13,329.88
313	303	Casing Joints	5 1/2	20.00	P-110	Yes	44.25	Yes		GBCD	5,666.9	13,374.13
314	304	Casing Joints	5 1/2	20.00	P-110	Yes	44.30	Yes		GBCD	5,622.6	13,418.43
315	305	Casing Joints	5 1/2	20.00	P-110	Yes	44.33	Yes		GBCD	5,578.2	13,462.76
316	306	Casing Joints	5 1/2	20.00	P-110	Yes	44.30	Yes		GBCD	5,533.9	13,507.06
317	307	Casing Joints	5 1/2	20.00	P-110	Yes	43.94	Yes		GBCD	5,490.0	13,551.00
318	308	Casing Joints	5 1/2	20.00	P-110	Yes	43.96	Yes		GBCD	5,446.0	13,594.96
319	309	Casing Joints	5 1/2	20.00	P-110	Yes	43.63	Yes		GBCD	5,402.4	13,638.59
320	310	Casing Joints	5 1/2	20.00	P-110	Yes	44.24	Yes		GBCD	5,358.2	13,682.83
321	311	Casing Joints	5 1/2	20.00	P-110	Yes	44.30	Yes		GBCD	5,313.9	13,727.13
322	312	Casing Joints	5 1/2	20.00	P-110	Yes	44.28	Yes		GBCD	5,269.6	13,771.41
323	313	Casing Joints	5 1/2	20.00	P-110	Yes	44.30	Yes		GBCD	5,225.3	13,815.71
324	314	Casing Joints	5 1/2	20.00	P-110	Yes	41.25	Yes		GBCD	5,184.0	13,856.96



## Centralizer Depths

**Well Name: KODAK SOUTH 11C**

**Production, Set Depth: 19,041.0ftKB**

API 05123521040000		Surface Legal Location SESW 26 6N 67W		Field Name Wattenberg		State CO		Well Configuration Type Horizontal			
Ground Elevation (ft) 4,743.00	Original KB Elevation (ft) 4,771.00	KB-Ground Distance (ft) 28.00	Spud Date 8/2/2023 16:00	Rig Release Date 8/7/2023 13:30	On Production Date	Abandon Date					

### Casing Run Tally

Run #	Ref #	Item Des	OD (in)	Wt (lb/ft)	Grade	Run?	Len (ft)	Centralized?	Ext Jwly	Connections	Top (ftKB)	Cum Len (ft)
325	315	Casing Joints	5 1/2	20.00	P-110	Yes	44.32	Yes		GBCD	5,139.7	13,901.28
326	316	Casing Joints	5 1/2	20.00	P-110	Yes	44.00	Yes		GBCD	5,095.7	13,945.28
327	317	Casing Joints	5 1/2	20.00	P-110	Yes	44.30	Yes		GBCD	5,051.4	13,989.58
328	318	Casing Joints	5 1/2	20.00	P-110	Yes	44.32	Yes		GBCD	5,007.1	14,033.90
329	319	Casing Joints	5 1/2	20.00	P-110	Yes	44.25	Yes		GBCD	4,962.9	14,078.15
330	320	Casing Joints	5 1/2	20.00	P-110	Yes	42.70	Yes		GBCD	4,920.2	14,120.85
331	321	Casing Joints	5 1/2	20.00	P-110	Yes	44.25	Yes		GBCD	4,875.9	14,165.10
332	322	Casing Joints	5 1/2	20.00	P-110	Yes	44.29	Yes		GBCD	4,831.6	14,209.39
333	323	Casing Joints	5 1/2	20.00	P-110	Yes	43.64	Yes		GBCD	4,788.0	14,253.03
334	324	Casing Joints	5 1/2	20.00	P-110	Yes	44.28	Yes		GBCD	4,743.7	14,297.31
335	325	Casing Joints	5 1/2	20.00	P-110	Yes	43.48	Yes		GBCD	4,700.2	14,340.79
336	326	Casing Joints	5 1/2	20.00	P-110	Yes	44.24	Yes		GBCD	4,656.0	14,385.03
337	327	Casing Joints	5 1/2	20.00	P-110	Yes	42.68	Yes		GBCD	4,613.3	14,427.71
338	328	Casing Joints	5 1/2	20.00	P-110	Yes	43.80	Yes		GBCD	4,569.5	14,471.51
339	329	Casing Joints	5 1/2	20.00	P-110	Yes	43.61	Yes		GBCD	4,525.9	14,515.12
340	330	Casing Joints	5 1/2	20.00	P-110	Yes	44.30	Yes		GBCD	4,481.6	14,559.42
341	331	Casing Joints	5 1/2	20.00	P-110	Yes	43.94	Yes		GBCD	4,437.6	14,603.36
342	332	Casing Joints	5 1/2	20.00	P-110	Yes	44.21	Yes		GBCD	4,393.4	14,647.57
343	333	Casing Joints	5 1/2	20.00	P-110	Yes	44.28	Yes		GBCD	4,349.2	14,691.85
344	334	Casing Joints	5 1/2	20.00	P-110	Yes	44.30	Yes		GBCD	4,304.9	14,736.15
345	335	Casing Joints	5 1/2	20.00	P-110	Yes	43.59	Yes		GBCD	4,261.3	14,779.74
346	336	Casing Joints	5 1/2	20.00	P-110	Yes	44.27	Yes		GBCD	4,217.0	14,824.01
347	337	Casing Joints	5 1/2	20.00	P-110	Yes	43.91	Yes		GBCD	4,173.1	14,867.92
348	338	Casing Joints	5 1/2	20.00	P-110	Yes	44.28	Yes		GBCD	4,128.8	14,912.20
349	339	Casing Joints	5 1/2	20.00	P-110	Yes	43.62	Yes		GBCD	4,085.2	14,955.82
350	340	Casing Joints	5 1/2	20.00	P-110	Yes	43.61	Yes		GBCD	4,041.6	14,999.43
351	341	Casing Joints	5 1/2	20.00	P-110	Yes	43.65	Yes		GBCD	3,997.9	15,043.08
352	342	Casing Joints	5 1/2	20.00	P-110	Yes	44.25	Yes		GBCD	3,953.7	15,087.33
353	343	Casing Joints	5 1/2	20.00	P-110	Yes	43.63	Yes		GBCD	3,910.0	15,130.96
354	344	Casing Joints	5 1/2	20.00	P-110	Yes	43.44	Yes		GBCD	3,866.6	15,174.40
355	345	Casing Joints	5 1/2	20.00	P-110	Yes	43.50	Yes		GBCD	3,823.1	15,217.90



## Centralizer Depths

**Well Name: KODAK SOUTH 11C**

**Production, Set Depth: 19,041.0ftKB**

API 05123521040000		Surface Legal Location SESW 26 6N 67W		Field Name Wattenberg		State CO		Well Configuration Type Horizontal			
Ground Elevation (ft) 4,743.00	Original KB Elevation (ft) 4,771.00	KB-Ground Distance (ft) 28.00	Spud Date 8/2/2023 16:00	Rig Release Date 8/7/2023 13:30	On Production Date	Abandon Date					

### Casing Run Tally

Run #	Ref #	Item Des	OD (in)	Wt (lb/ft)	Grade	Run?	Len (ft)	Centralized?	Ext Jw/ry	Connections	Top (ftKB)	Cum Len (ft)
356	346	Casing Joints	5 1/2	20.00	P-110	Yes	44.25	Yes		GBCD	3,778.9	15,262.15
357	347	Casing Joints	5 1/2	20.00	P-110	Yes	43.84	Yes		GBCD	3,735.0	15,305.99
358	348	Casing Joints	5 1/2	20.00	P-110	Yes	43.62	Yes		GBCD	3,691.4	15,349.61
359	349	Casing Joints	5 1/2	20.00	P-110	Yes	43.82	Yes		GBCD	3,647.6	15,393.43
360	350	Casing Joints	5 1/2	20.00	P-110	Yes	44.28	Yes		GBCD	3,603.3	15,437.71
361	351	Casing Joints	5 1/2	20.00	P-110	Yes	44.30	Yes		GBCD	3,559.0	15,482.01
362	352	Casing Joints	5 1/2	20.00	P-110	Yes	43.90	Yes		GBCD	3,515.1	15,525.91
363	353	Casing Joints	5 1/2	20.00	P-110	Yes	43.87	Yes		GBCD	3,471.2	15,569.78
364	354	Casing Joints	5 1/2	20.00	P-110	Yes	43.10	Yes		GBCD	3,428.1	15,612.88
365	355	Casing Joints	5 1/2	20.00	P-110	Yes	44.28	Yes		GBCD	3,383.8	15,657.16
366	356	Casing Joints	5 1/2	20.00	P-110	Yes	43.60	Yes		GBCD	3,340.2	15,700.76
367	357	Casing Joints	5 1/2	20.00	P-110	Yes	42.66	Yes		GBCD	3,297.6	15,743.42
369	358	Casing Joints	5 1/2	20.00	P-110	Yes	43.63	Yes		GBCD	3,239.1	15,801.86
370	359	Casing Joints	5 1/2	20.00	P-110	Yes	44.29	Yes		GBCD	3,194.9	15,846.15
371	360	Casing Joints	5 1/2	20.00	P-110	Yes	43.56	Yes		GBCD	3,151.3	15,889.71
372	361	Casing Joints	5 1/2	20.00	P-110	Yes	44.26	Yes		GBCD	3,107.0	15,933.97
373	362	Casing Joints	5 1/2	20.00	P-110	Yes	44.25	Yes		GBCD	3,062.8	15,978.22
374	363	Casing Joints	5 1/2	20.00	P-110	Yes	43.87	Yes		GBCD	3,018.9	16,022.09
375	364	Casing Joints	5 1/2	20.00	P-110	Yes	44.29	Yes		GBCD	2,974.6	16,066.38
376	365	Casing Joints	5 1/2	20.00	P-110	Yes	43.82	Yes		GBCD	2,930.8	16,110.20
377	366	Casing Joints	5 1/2	20.00	P-110	Yes	43.12	Yes		GBCD	2,887.7	16,153.32
378	367	Casing Joints	5 1/2	20.00	P-110	Yes	44.30	Yes		GBCD	2,843.4	16,197.62
379	368	Casing Joints	5 1/2	20.00	P-110	Yes	43.44	Yes		GBCD	2,799.9	16,241.06
380	369	Casing Joints	5 1/2	20.00	P-110	Yes	43.64	Yes		GBCD	2,756.3	16,284.70
381	370	Casing Joints	5 1/2	20.00	P-110	Yes	44.24	Yes		GBCD	2,712.1	16,328.94
382	371	Casing Joints	5 1/2	20.00	P-110	Yes	43.60	Yes		GBCD	2,668.5	16,372.54
383	372	Casing Joints	5 1/2	20.00	P-110	Yes	43.51	Yes		GBCD	2,625.0	16,416.05
384	373	Casing Joints	5 1/2	20.00	P-110	Yes	44.26	Yes		GBCD	2,580.7	16,460.31
385	374	Casing Joints	5 1/2	20.00	P-110	Yes	44.25	Yes		GBCD	2,536.4	16,504.56
386	375	Casing Joints	5 1/2	20.00	P-110	Yes	44.25	Yes		GBCD	2,492.2	16,548.81
387	376	Casing Joints	5 1/2	20.00	P-110	Yes	43.60	Yes		GBCD	2,448.6	16,592.41



## Centralizer Depths

**Well Name: KODAK SOUTH 11C**

**Production, Set Depth: 19,041.0ftKB**

API 05123521040000		Surface Legal Location SESW 26 6N 67W		Field Name Wattenberg		State CO		Well Configuration Type Horizontal	
Ground Elevation (ft) 4,743.00	Original KB Elevation (ft) 4,771.00	KB-Ground Distance (ft) 28.00	Spud Date 8/2/2023 16:00	Rig Release Date 8/7/2023 13:30	On Production Date	Abandon Date			

Casing Run Tally												
Run #	Ref #	Item Des	OD (in)	Wt (lb/ft)	Grade	Run?	Len (ft)	Centralized?	Ext Jw/ry	Connections	Top (ftKB)	Cum Len (ft)
388	377	Casing Joints	5 1/2	20.00	P-110	Yes	43.58	Yes		GBCD	2,405.0	16,635.99
389	378	Casing Joints	5 1/2	20.00	P-110	Yes	43.94	Yes		GBCD	2,361.1	16,679.93
390	379	Casing Joints	5 1/2	20.00	P-110	Yes	44.28	Yes		GBCD	2,316.8	16,724.21
391	380	Casing Joints	5 1/2	20.00	P-110	Yes	43.63	Yes		GBCD	2,273.2	16,767.84
392	381	Casing Joints	5 1/2	20.00	P-110	Yes	44.28	Yes		GBCD	2,228.9	16,812.12
393	382	Casing Joints	5 1/2	20.00	P-110	Yes	43.65	Yes		GBCD	2,185.2	16,855.77
394	383	Casing Joints	5 1/2	20.00	P-110	Yes	44.30	Yes		GBCD	2,140.9	16,900.07
395	384	Casing Joints	5 1/2	20.00	P-110	Yes	44.29	Yes		GBCD	2,096.6	16,944.36
396	385	Casing Joints	5 1/2	20.00	P-110	Yes	43.60	Yes		GBCD	2,053.0	16,987.96
397	386	Casing Joints	5 1/2	20.00	P-110	Yes	42.05	Yes		GBCD	2,011.0	17,030.01
398	387	Casing Joints	5 1/2	20.00	P-110	Yes	44.31	Yes		GBCD	1,966.7	17,074.32
399	388	Casing Joints	5 1/2	20.00	P-110	Yes	44.28	Yes		GBCD	1,922.4	17,118.60
400	389	Casing Joints	5 1/2	20.00	P-110	Yes	44.27	Yes		GBCD	1,878.1	17,162.87
401	390	Casing Joints	5 1/2	20.00	P-110	Yes	44.32	Yes		GBCD	1,833.8	17,207.19
402	391	Casing Joints	5 1/2	20.00	P-110	Yes	44.26	Yes		GBCD	1,789.6	17,251.45
403	392	Casing Joints	5 1/2	20.00	P-110	Yes	43.88	Yes		GBCD	1,745.7	17,295.33
404	393	Casing Joints	5 1/2	20.00	P-110	Yes	43.87	Yes		GBCD	1,701.8	17,339.20
405	394	Casing Joints	5 1/2	20.00	P-110	Yes	44.28	Yes		GBCD	1,657.5	17,383.48
406	395	Casing Joints	5 1/2	20.00	P-110	Yes	44.28	Yes		GBCD	1,613.2	17,427.76
407	396	Casing Joints	5 1/2	20.00	P-110	Yes	44.26	Yes		GBCD	1,569.0	17,472.02
408	397	Casing Joints	5 1/2	20.00	P-110	Yes	44.30	Yes		GBCD	1,524.7	17,516.32
409	398	Casing Joints	5 1/2	20.00	P-110	Yes	44.25	Yes		GBCD	1,480.4	17,560.57
410	399	Casing Joints	5 1/2	20.00	P-110	Yes	44.26	Yes		GBCD	1,436.2	17,604.83
411	400	Casing Joints	5 1/2	20.00	P-110	Yes	44.27	Yes		GBCD	1,391.9	17,649.10
412	401	Casing Joints	5 1/2	20.00	P-110	Yes	44.05	Yes		GBCD	1,347.9	17,693.15
413	402	Casing Joints	5 1/2	20.00	P-110	Yes	44.30	Yes		GBCD	1,303.6	17,737.45
414	403	Casing Joints	5 1/2	20.00	P-110	Yes	44.30	Yes		GBCD	1,259.3	17,781.75
415	404	Casing Joints	5 1/2	20.00	P-110	Yes	43.51	Yes		GBCD	1,215.7	17,825.26
416	405	Casing Joints	5 1/2	20.00	P-110	Yes	43.57	Yes		GBCD	1,172.2	17,868.83
417	406	Casing Joints	5 1/2	20.00	P-110	Yes	43.32	Yes		GBCD	1,128.9	17,912.15
418	407	Casing Joints	5 1/2	20.00	P-110	Yes	43.36	Yes		GBCD	1,085.5	17,955.51



## Centralizer Depths

**Well Name: KODAK SOUTH 11C**

**Production, Set Depth: 19,041.0ftKB**

API 05123521040000		Surface Legal Location SESW 26 6N 67W		Field Name Wattenberg		State CO		Well Configuration Type Horizontal	
Ground Elevation (ft) 4,743.00	Original KB Elevation (ft) 4,771.00	KB-Ground Distance (ft) 28.00	Spud Date 8/2/2023 16:00	Rig Release Date 8/7/2023 13:30	On Production Date	Abandon Date			

### Casing Run Tally

Run #	Ref #	Item Des	OD (in)	Wt (lb/ft)	Grade	Run?	Len (ft)	Centralized?	Ext Jw/ry	Connections	Top (ftKB)	Cum Len (ft)
419	408	Casing Joints	5 1/2	20.00	P-110	Yes	42.15	Yes		GBCD	1,043.3	17,997.66
420	409	Casing Joints	5 1/2	20.00	P-110	Yes	43.86	Yes		GBCD	999.5	18,041.52
421	410	Casing Joints	5 1/2	20.00	P-110	Yes	42.92	Yes		GBCD	956.6	18,084.44
422	411	Casing Joints	5 1/2	20.00	P-110	Yes	43.94	Yes		GBCD	912.6	18,128.38
423	412	Casing Joints	5 1/2	20.00	P-110	Yes	43.51	Yes		GBCD	869.1	18,171.89
424	413	Casing Joints	5 1/2	20.00	P-110	Yes	43.33	Yes		GBCD	825.8	18,215.22
425	414	Casing Joints	5 1/2	20.00	P-110	Yes	43.88	Yes		GBCD	781.9	18,259.10
426	415	Casing Joints	5 1/2	20.00	P-110	Yes	43.88	Yes		GBCD	738.0	18,302.98
427	416	Casing Joints	5 1/2	20.00	P-110	Yes	42.78	Yes		GBCD	695.2	18,345.76
428	417	Casing Joints	5 1/2	20.00	P-110	Yes	41.57	Yes		GBCD	653.7	18,387.33
429	418	Casing Joints	5 1/2	20.00	P-110	Yes	43.64	Yes		GBCD	610.0	18,430.97
430	419	Casing Joints	5 1/2	20.00	P-110	Yes	43.60	Yes		GBCD	566.4	18,474.57
431	420	Casing Joints	5 1/2	20.00	P-110	Yes	44.28	Yes		GBCD	522.2	18,518.85