

**WELL PAD LOCATION PICTURES
ALDER 23-16HZ**

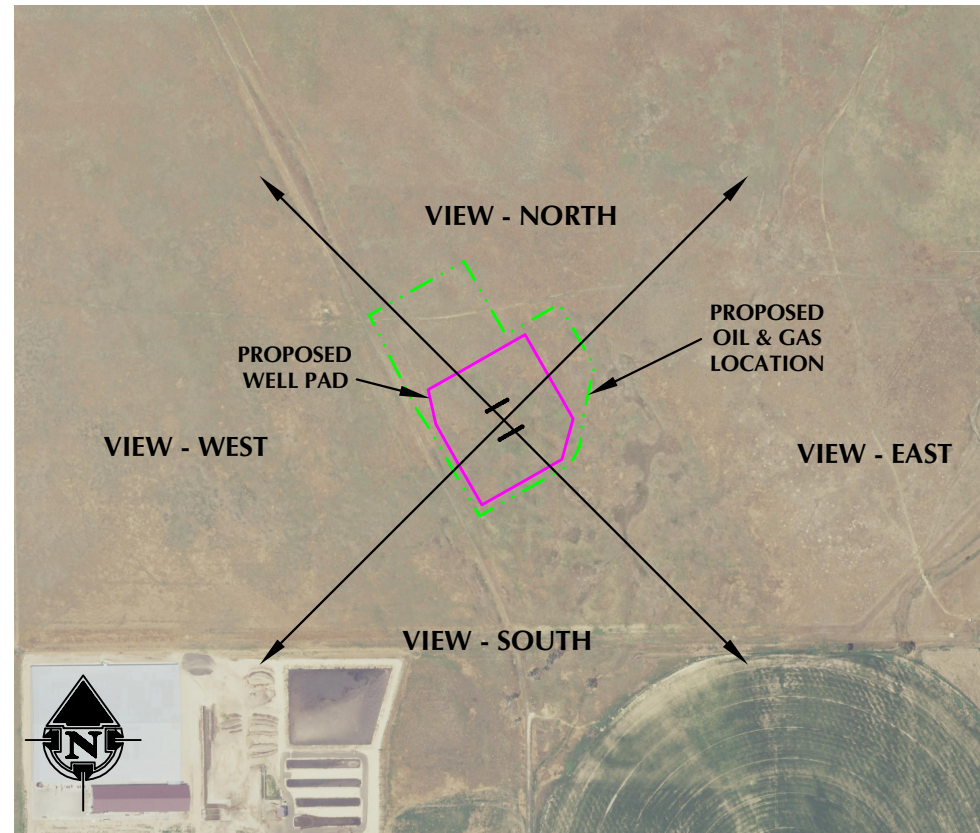
S1/2 SECTION 16, TOWNSHIP 2 NORTH, RANGE 63 WEST, 6TH P.M., WELD COUNTY, COLORADO



LOCATION PICTURE OF ALDER 23-16HZ WELL PAD - CAMERA VIEW NORTH



LOCATION PICTURE OF ALDER 23-16HZ WELL PAD - CAMERA VIEW SOUTH



VIEW - OVERHEAD
AERIAL IMAGERY COURTESY OF NAIP
(2021)



LOCATION PICTURE OF ALDER 23-16HZ WELL PAD - CAMERA VIEW EAST



LOCATION PICTURE OF ALDER 23-16HZ WELL PAD - CAMERA VIEW WEST

K:\AMDRK\2021\2022_124_ALDER_T2N_R63W_SEC_16\DWG\COLORADO_T2N_R63W_SEC_16.dwg, 7/3/2023 3:00:50 PM, skundberg



LOVELAND OFFICE
6706 North Franklin Avenue
Loveland, Colorado 80538
Phone 970-776-4331

SHERIDAN OFFICE
1095 Saberton Avenue
Sheridan, Wyoming 82801
Phone 307-674-0609

CONSULTING, LLC

**Kerr-McGee Oil &
Gas Onshore LP**
1099 18th Street
Denver, Colorado 80202

DATE SURVEYED: 4/27/23
DATE: 6/30/23
DRAFTER: JAC
REVISED:

DATA SOURCES:
-AERIAL IMAGERY COURTESY OF NAIP.