

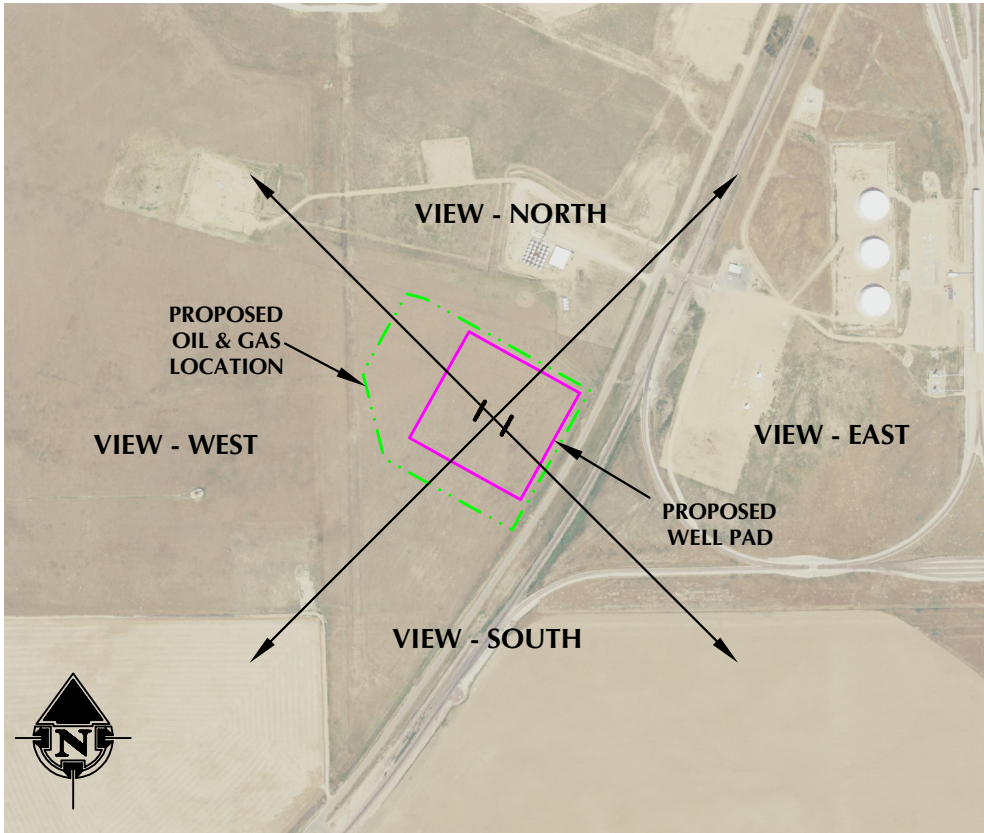
WELL PAD LOCATION PICTURES  
**ACACIA 13-17HZ**  
SW1/4 SECTION 17, TOWNSHIP 2 NORTH, RANGE 63 WEST, 6TH P.M., KEENESBURG, COLORADO



LOCATION PICTURE OF ACACIA 13-17HZ WELL PAD - CAMERA VIEW NORTH



LOCATION PICTURE OF ACACIA 13-17HZ WELL PAD - CAMERA VIEW SOUTH



VIEW - OVERHEAD  
AERIAL IMAGERY COURTESY OF NAIP  
(2021)



LOCATION PICTURE OF ACACIA 13-17HZ WELL PAD - CAMERA VIEW EAST



LOCATION PICTURE OF ACACIA 13-17HZ WELL PAD - CAMERA VIEW WEST

K:\ANADARKO\2022\2022\_135\_ACACIA\_T2N\_R63W\_SEC\_17\DWG\ACACIA\_T2N\_R63W\_SEC\_17.dwg, 8/14/2023 5:03:54 PM, sundberg



LOVELAND OFFICE  
6706 North Franklin Avenue  
Loveland, Colorado 80538  
Phone 970-776-4331  
  
SHERIDAN OFFICE  
1095 Saberton Avenue  
Sheridan, Wyoming 82801  
Phone 307-674-0609

CONSULTING, LLC

**Kerr-McGee Oil &  
Gas Onshore LP**  
1099 18th Street  
Denver, Colorado 80202

DATE SURVEYED: 6/30/23  
DATE: 8/14/23  
DRAFTER: JAC  
REVISED:

DATA SOURCES:  
-AERIAL IMAGERY COURTESY OF NAIP.