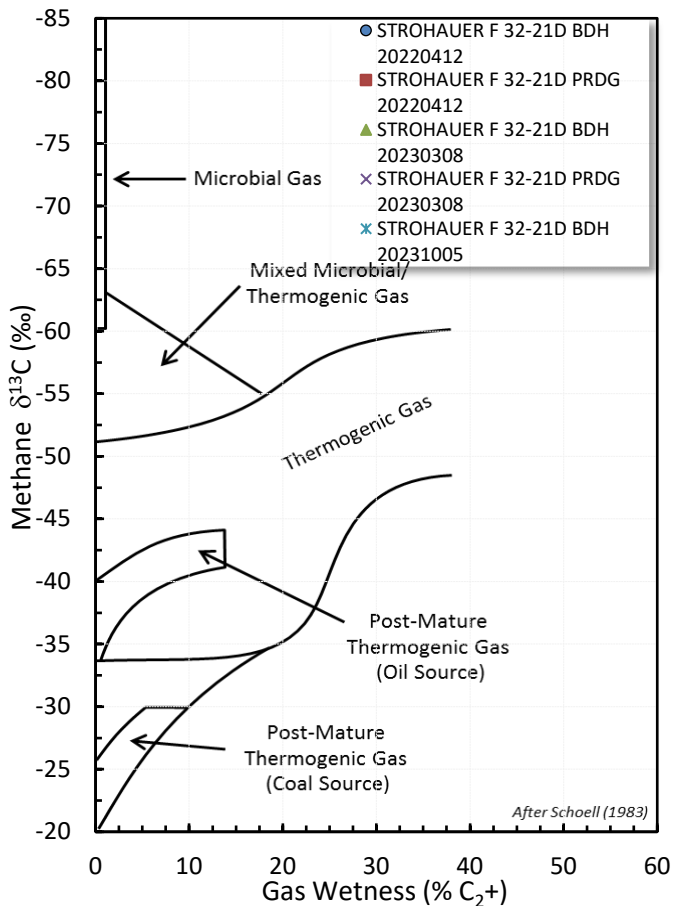
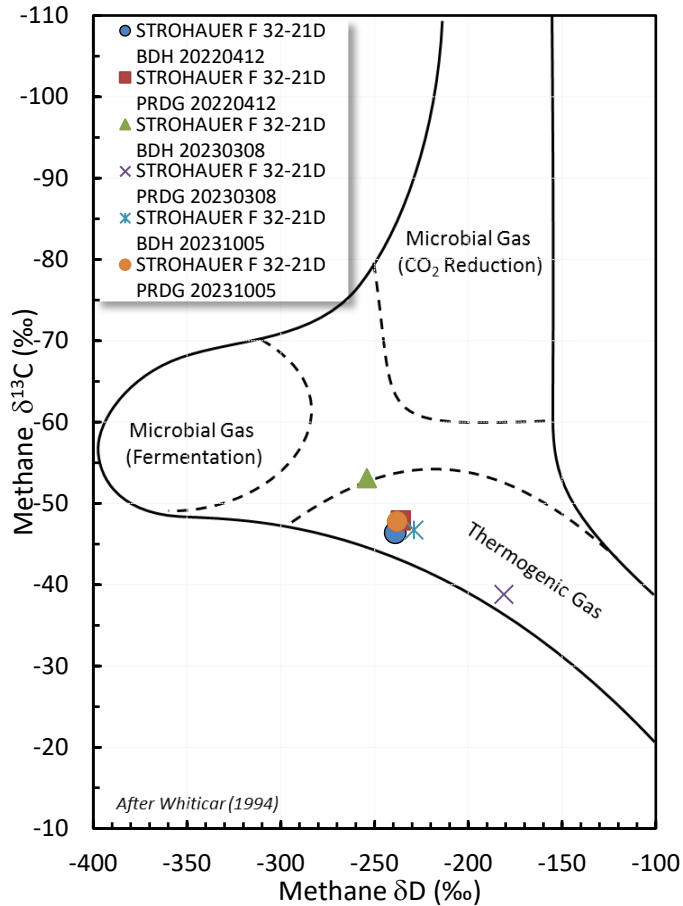


Stable Isotope Interpretive Plots

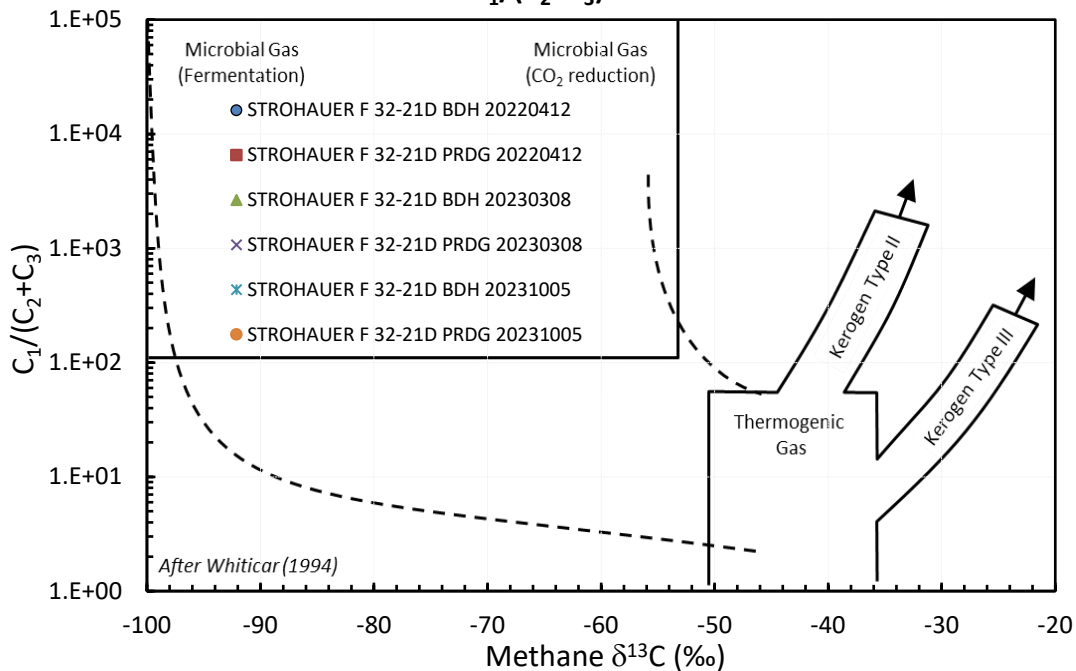
Methane vs Gas Wetness Genetic Classification



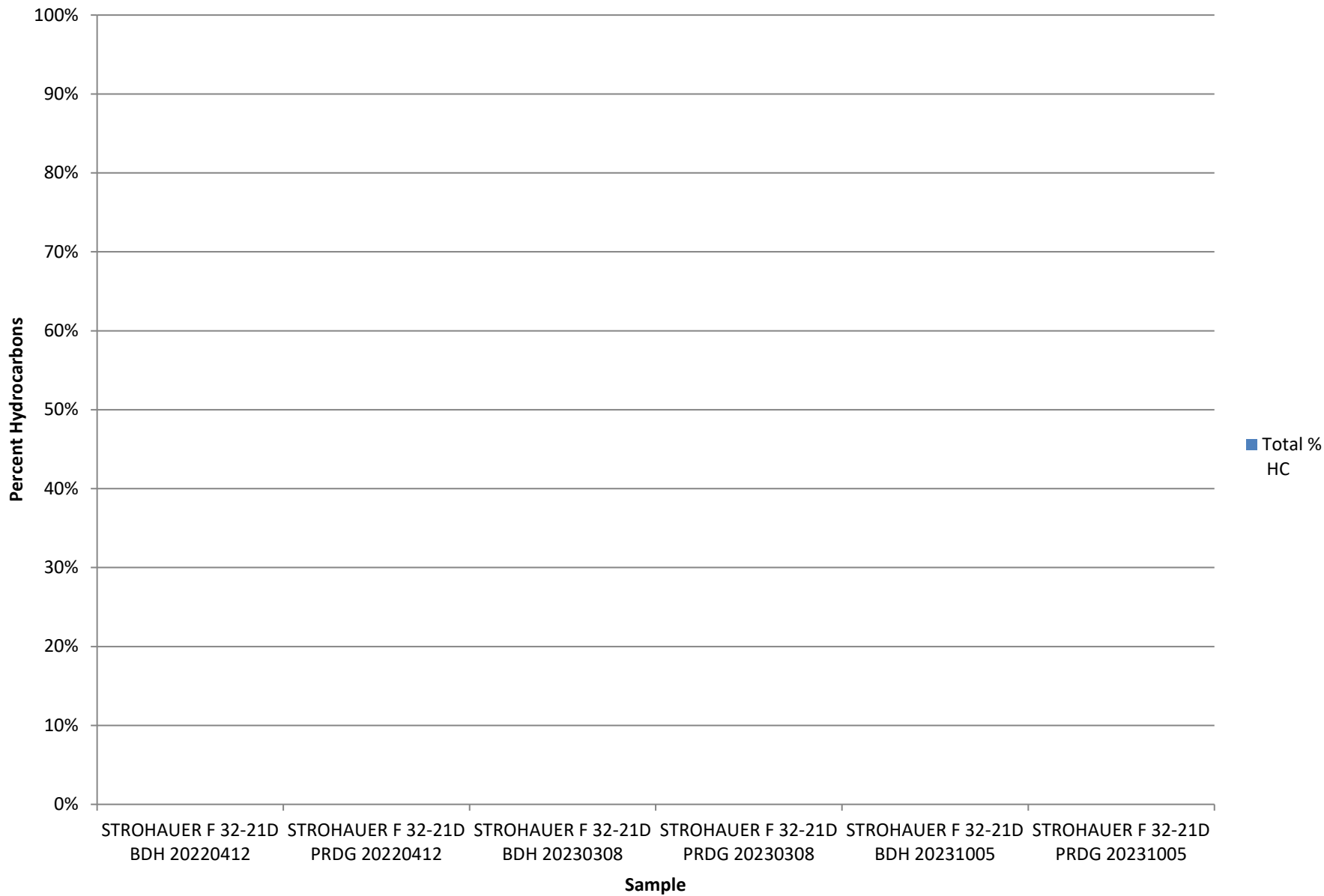
Methane $\delta^{13}\text{C}$ vs δD Genetic Classification Plot



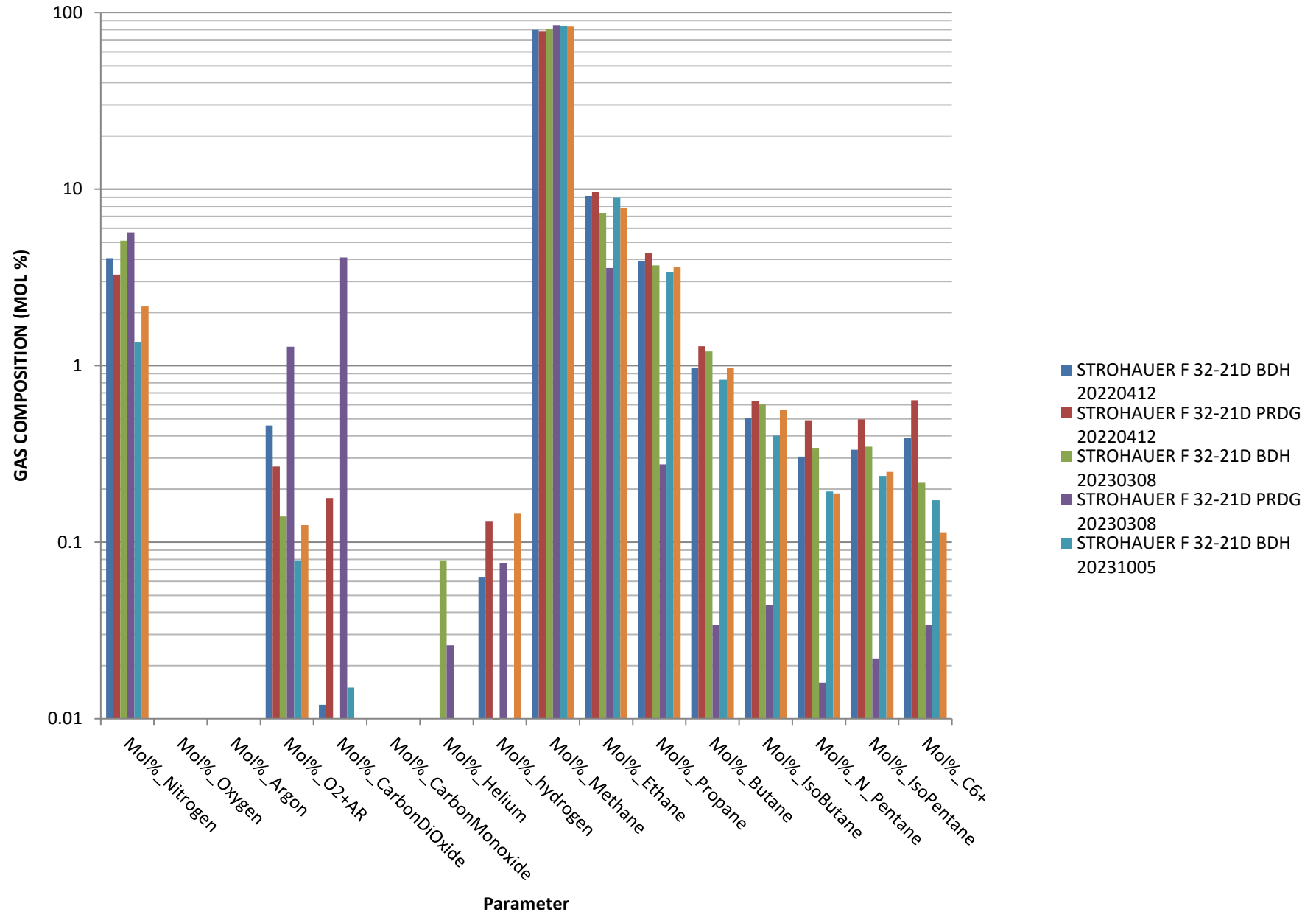
Methane $\delta^{13}\text{C}$ vs $\text{C}_1/(\text{C}_2+\text{C}_3)$ Genetic Classification Plot



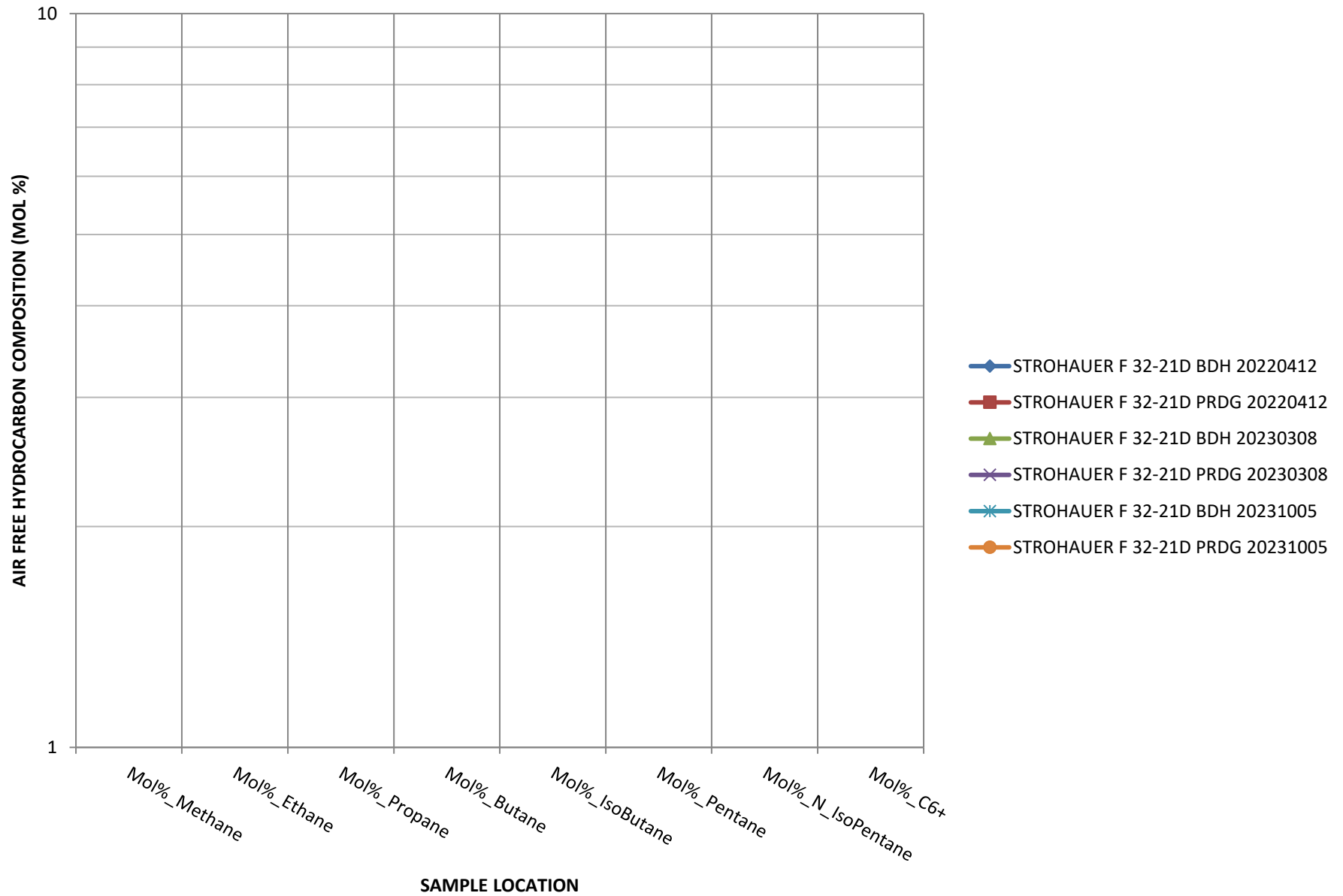
Total Percent Hydrocarbons

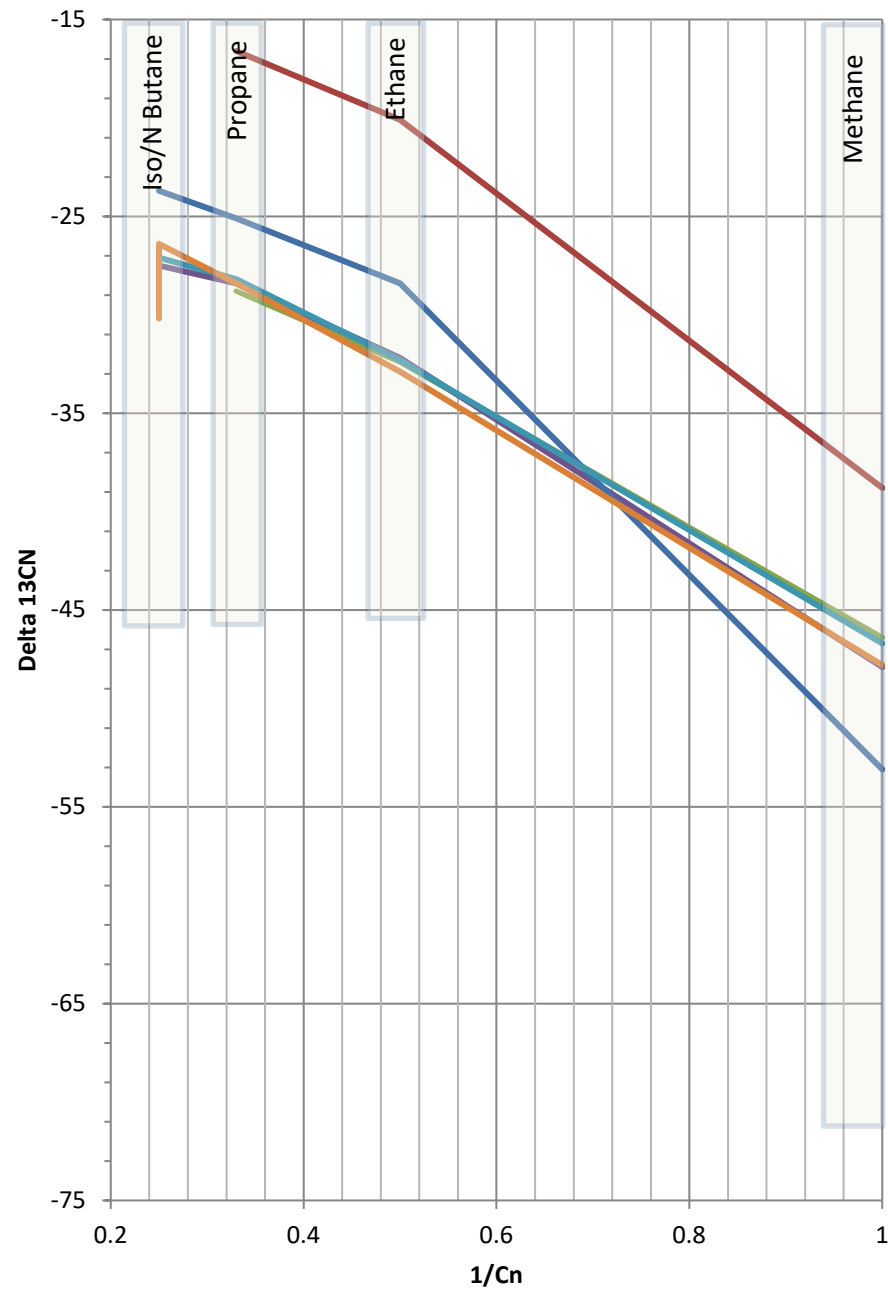


GAS COMPOSITION



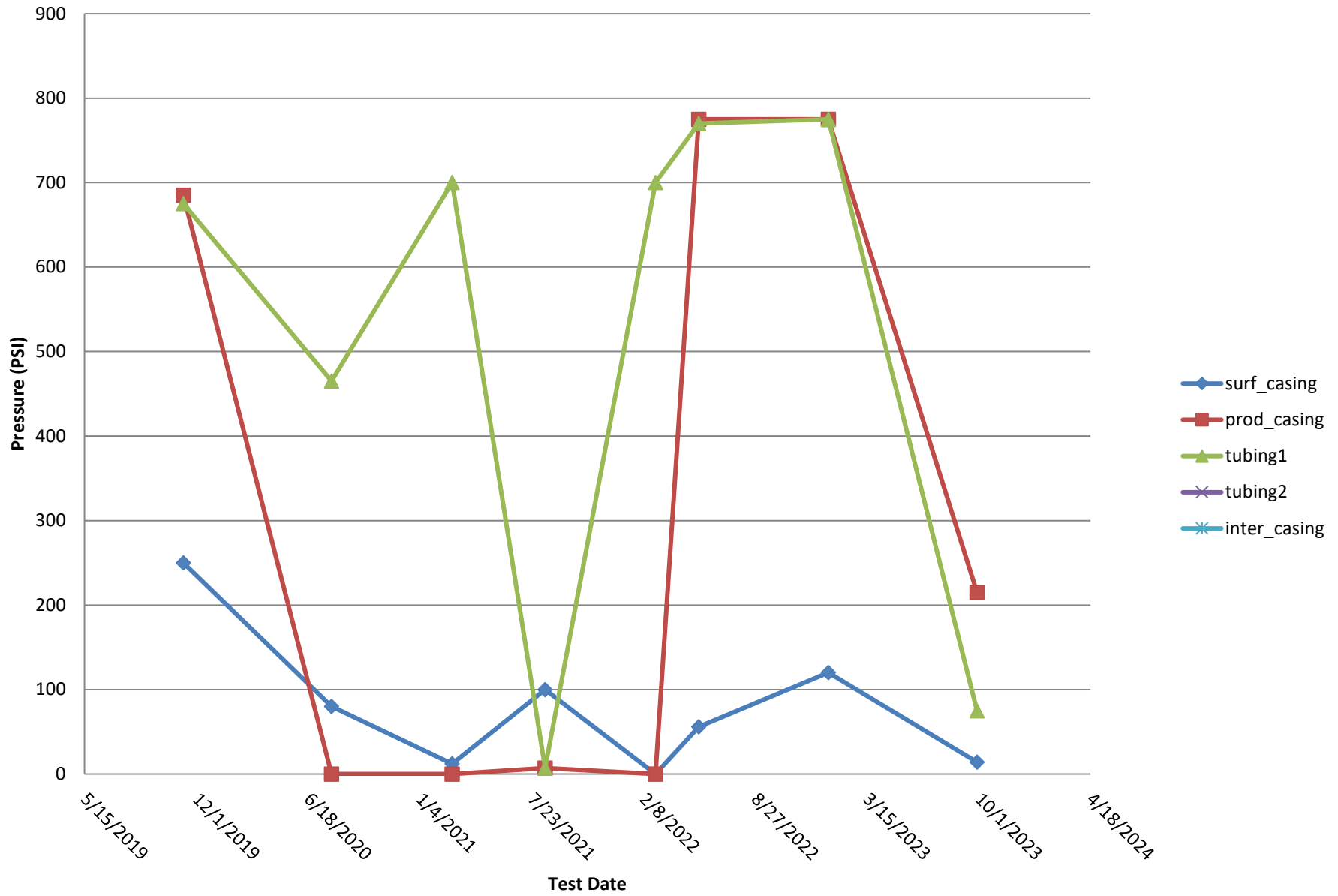
HYDROCARBON COMPOSITION



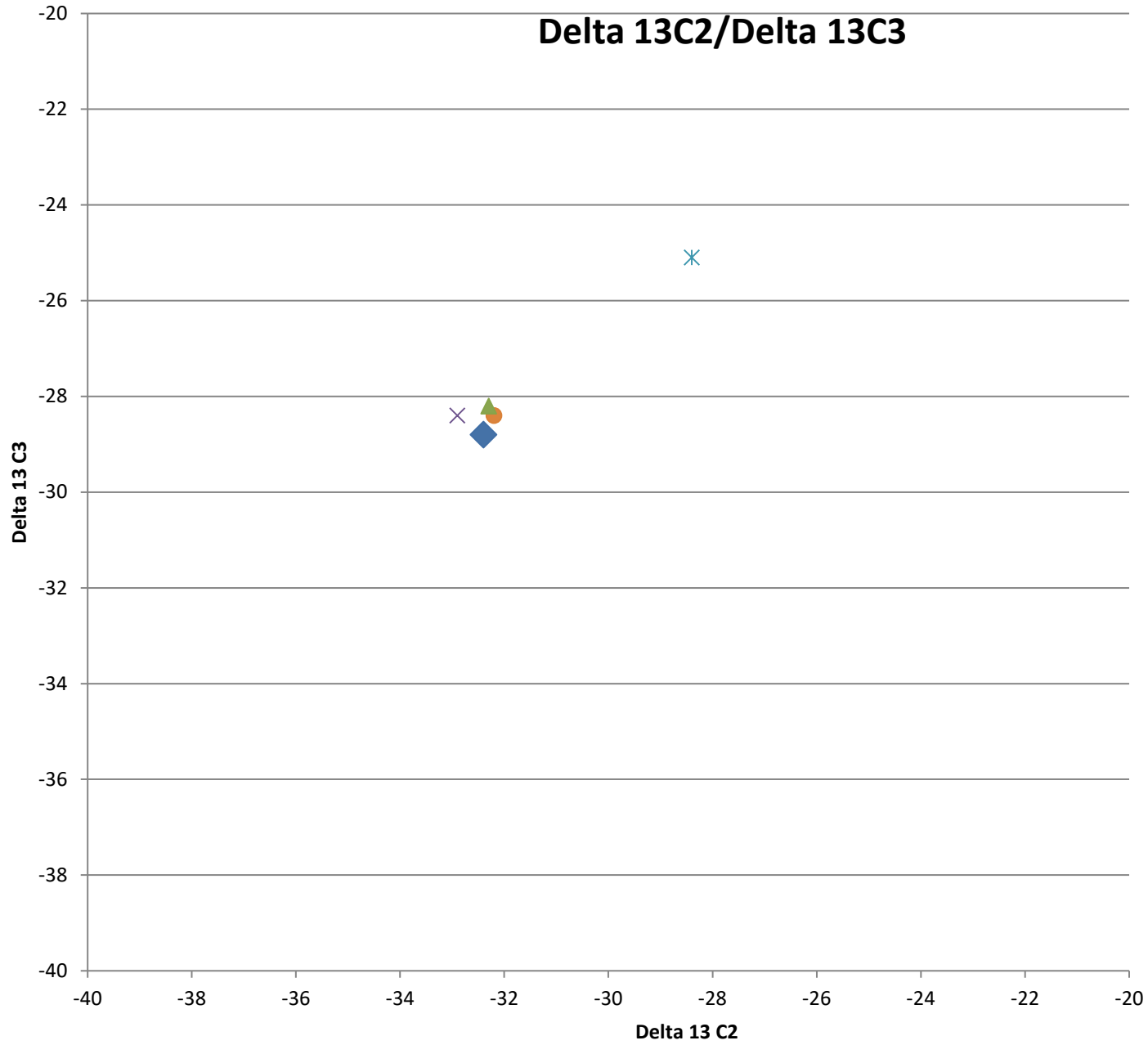


- STROHAUER F 32-21D BDH
- STROHAUER F 32-21D PRDG
- STROHAUER F 32-21D BDH
- STROHAUER F 32-21D PRDG
- STROHAUER F 32-21D BDH
- STROHAUER F 32-21D PRDG

Bradenhead Test Summary

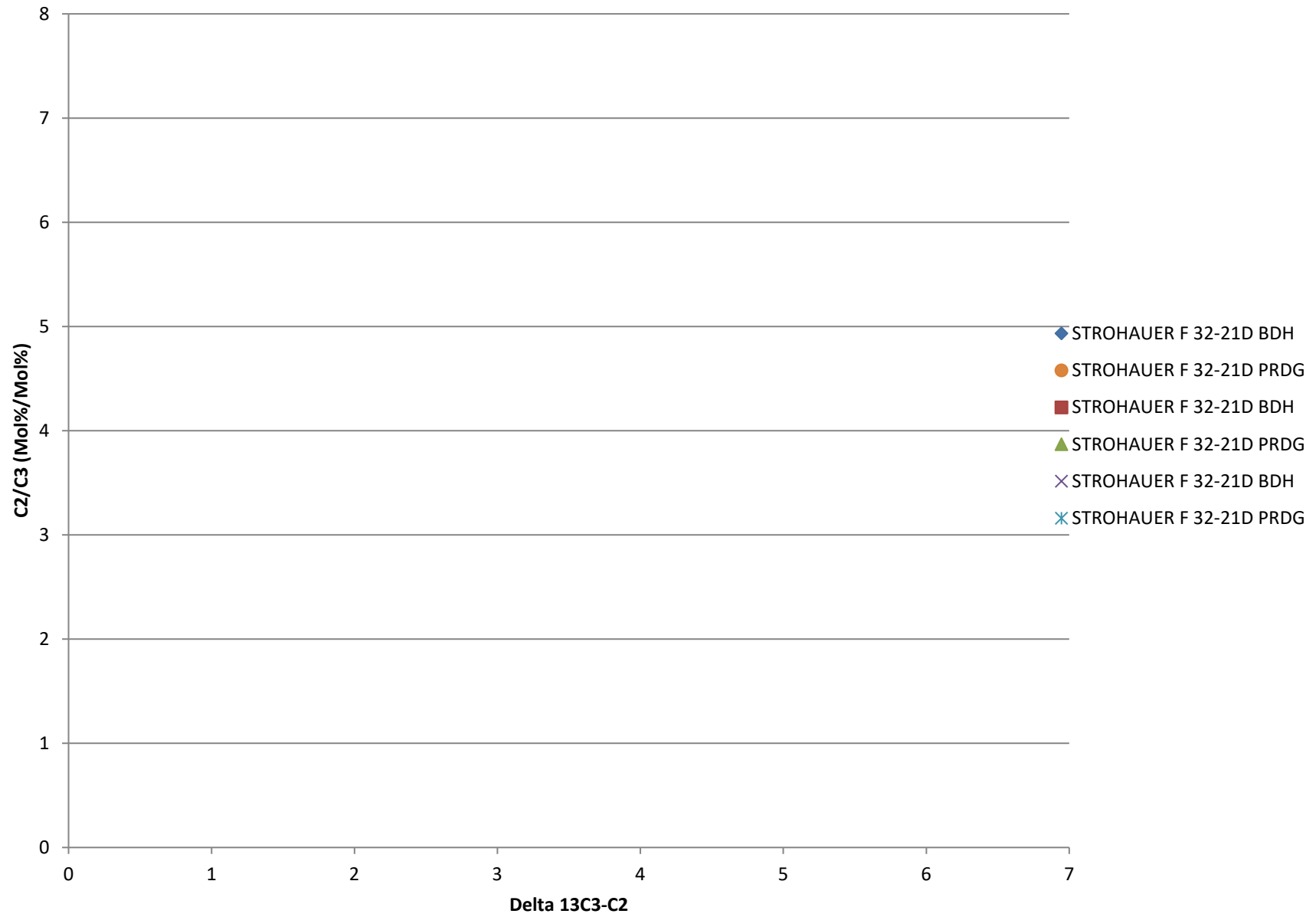


Delta 13C2/Delta 13C3



- ◆ STROHAUER F 32-21D BDH
- STROHAUER F 32-21D PRDG
- * STROHAUER F 32-21D BDH
- STROHAUER F 32-21D PRDG
- ▲ STROHAUER F 32-21D BDH
- × STROHAUER F 32-21D PRDG

Delta13 C2/C3 vs. Delta 13C3-C2



Delta 13 IC4/ Delta NC4

