



00063276

FINAL PLUGGED SCHEMATIC

CHEVRON U.S.A. PRODUCTION CO.
PLUGGED AND ABANDONED (1992)
HAGOOD L.N. B-3
SE NE SEC. 1, T1N, R102W

FED. # D-052264

API # 05-103-06074

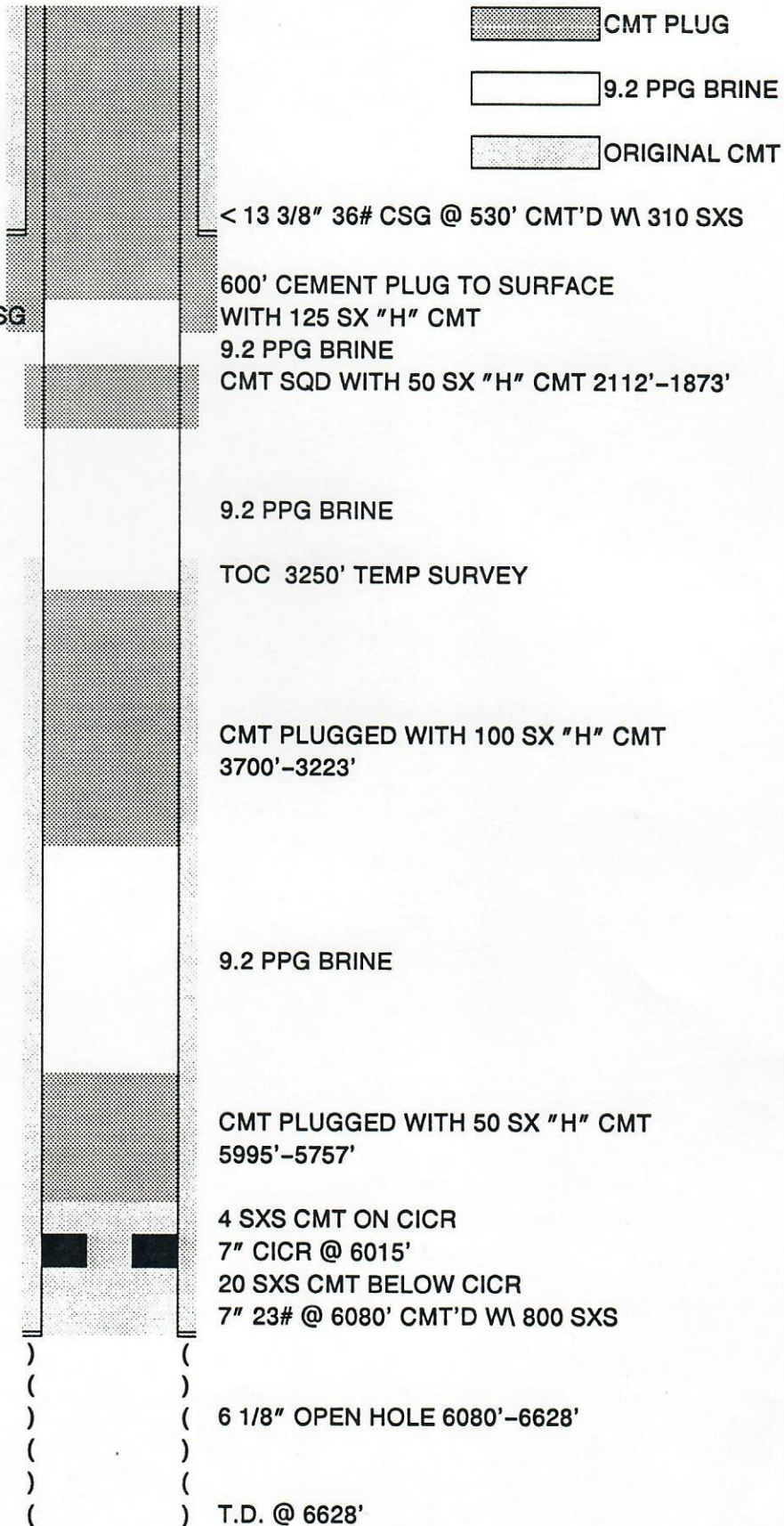
1974 PUMPED
150 SXS CEMENT DOWN
13 3/8" X 7" ANNULUS

JULY 1992
CMT SQ'D WITH 155 SX
"H" CMT DOWN SURF CSG

DAKOTA TOP @ 3643'

MORRISON TOP @ 3706'

WEBER TOP @ 6074'



HALLIBURTON SERVICES

JOB LOG

WELL NO. B-3 LEASE HAY Good TICKET NO. 234693
 CUSTOMER Chellian USA PAGE NO. 1
 JOB TYPE PTA DATE 7-6-92

FORM 2013 R-2

CHART NO.	TIME	RATE (BPM)	VOLUME (BBL) (GAL)	PUMPS		PRESSURE (PSI)		DESCRIPTION OF OPERATION AND MATERIALS
				T	C	TUBING	CASING	
	04:00							Called out
	07:00							on location, safety meeting, set up Rig up to Endless tubing unit
	09:37	.8	0			2500		start drilling cement at surface
	13:28	.8	182			3000		Break through cement at 33 Ft.
	13:29	.3	0			2500		circulate through tubing to 6000' 5975'
	15:32	0	21.4			430		Shut down
	15:40	.3	0			425		start Fresh Ahead Tubing at 5990'
	15:46	.8	5			1430		End Fresh / start 50 ⁴ cement at 16.4"
	15:58	.8	9.4			3535		End cement / start Fresh displacement
	16:00	.8	1.2			3569		cement at End of tubing
	16:10	1.4	11.6			3810		End Fresh / start brine at 9.3"
	17:24	1	80			3666		End brine / start Fresh displacement
	17:34	0	8			100		End displacement / Shut down
	17:34	1	0			187		Reverse circulate well
	18:50	0	35			3400		Shut down
								Done for DAY
								7-7-92
	0500							Called out
	0700							on loc
	0800							Rin with TBG to 3700'
	0804	.5	-			800		Fill Hole
	0830	.7	15			3900		Hole Full
	0831	-	-			-		Mix Coat C 16.4" / 1.06
	0832	1.1	-			4275		Start Coat
	0847	.7	12			4550		Coat C Bottom of TBG
	0855	.7	18.8			4500		END COAT Start DISP
	0907	-	11.6			-		END DISP TOE C 3220'
	0910							POCK to 3100'
	0911	1.2	-			640		Reverse Fill Hole
	0946	-	33			-		END Reverse
	0948	1.1	-			4300		Rig up to TBG, start 7.2" Brine
	1028	1.1	45			4400		END Brine - 5 th DISP
	1039	-	11.6			-		END DISP
	1045							POCK to 2100'

JOB LOG

WELL NO. B-3 LEASE HaywoodTICKET NO. 234673CUSTOMER Cheslow U.S.APAGE NO. 2

FORM 2013 R-2

JOB TYPE P.T.ADATE 7-7-92

CHART NO.	TIME	RATE (BPM)	VOLUME (BBL) (GAL)	PUMPS		PRESSURE (PSI)		DESCRIPTION OF OPERATION AND MATERIALS
				T	C	TUBING	CASING	
3	1050	-	-			-		MIX CMT @ 16.4 #/gal 1.06
	1051	.8	-			4350		START CMT
	1100	.8	9.4			4500		END CMT START DISP
	1115		11.6					END DISP
	1120	1.0	-			3300		POOH. Circ White pooh.
	1135	-	15			-		OUT OF HOLE SHUT DOWN
	1138	.3	-				200	PRESSURE UP ON C39
	1140	-	-				50	PRESSURE BLEED OFF
	1142	-	-				50	SHUT IN WELL
	1145	-	-				-	W.O.C.
	1441	1.0	-			3500		RTH TO 1700' Circ Well
	1446	1.0	6			3800		END FRESH
4	1447	1.0	-			4200		START BRINE Plug
	1527	1.0	43			4350		END BRINE
	1527	.8	-			4350		START DISP 1700' - 600'
	1539	.8	11.6			4200		END DISP
	1540	-	-			-		POOH.
	1545	-	-			-		Rig UP TO ANNULUS
	1550	-	-			-		MIX CMT
	1552	1.0	-					START CMT
	1611	-	21				500	SHUT DOWN
	1623	.5	21.5				160	START PUMPING (125 SKS TOTAL)
	1626	-	22.5				500	SHUT DOWN (110 SKS IN ANNULUS)
	1643	.5	22.5				300	START PUMPING (25 SKS TO PIT)
	1652	-	23				500	SHUT IN WELL FOR NIGHT
	1730	-	-			-	-	RELEASED FOR O.A./
								7-8-92
	0430							CALLED OUT
	0630							ON LOG
5	0700	.5	-			0	-	PRESSURE UP ANNULUS
	0702	-	2			0	-	NO PRESSURE SHUT DOWN
	0832	-					-	MIX CMT @ 16.4 #/gal 1.06
	0834	1.0	-				0	START CMT (45 SKS IN ANNULUS)
	0844	-	8.4				500	END CMT (15 SKS TO PIT)
	0847						500	SHUT IN ANNULUS

JOB LOG

WELL NO. B-3 LEASE HaygoodTICKET NO. 234673CUSTOMER Chico U.S.APAGE NO. 3

FORM 2013 R-2

JOB TYPE P.T.A.DATE 7-8-72

CHART NO.	TIME	RATE (BPM)	VOLUME (BBL.) (GAL.)	PUMPS		PRESSURE (PSI)		DESCRIPTION OF OPERATION AND MATERIALS
				T	C	TUBING	CASING	
5	0657	1.0	—			1500		R.I.H. with TBG. to 600'
	0708	—	8			3000		PUMP FISH WITH R.I.H.
	0710	—	—			—		SHUT DOWN
	0711	1.0	—			4100		MAX CONT C 16.4 1/2" 1.06 100% ₂₄
	0723	.8	11.5			4500		START CONT
	0737	.8	23.5			4400		CONT C END OF TBG
	0740	.8	—			4400		END CONT
	0752	—	11.5			—		START DISP
			—			—		END DISP
			—			—		CONT TO SURFACE
	1030							RELEASED FROM JOB
								THANKS,
								DARRIN + CREW

FORM 1906 R-11

WELL NO. — FARM OR LEASE NAME B-3 Haygood		COUNTY R. Blanco	STATE Colo.	CITY / OFFSHORE LOCATION Rangley	DATE
CHARGE TO Carnegie USA			OWNER Same	TICKET TYPE (CHECK ONE) SERVICE <input checked="" type="checkbox"/> SALES <input type="checkbox"/>	
ADDRESS			CONTRACTOR OTIS	LOCATION 1 Urrung 1	NITROGEN JOB YES <input type="checkbox"/> NO <input checked="" type="checkbox"/>
CITY, STATE, ZIP			SHIPPED VIA Hewlett	FREIGHT CHARGES <input type="checkbox"/> FPD <input type="checkbox"/> COLLECT	CODE 55685
WELL TYPE 01	WELL CATEGORY 06	WELL PERMIT NO.	DELIVERED TO location	LOCATION 3	CODE
TYPE AND PURPOSE OF JOB 115 Plug to Abandon		B-967146	ORDER NO.	REFERRAL LOCATION	

As consideration, the above-named Customer agrees to pay Halliburton in accord with the rates and terms stated in Halliburton's current price lists. Invoices payable NET by the 20th of the following month after date of invoice. Upon Customer's default in payment of Customer's account by the last day of the month following the month in which the invoice is due, Halliburton agrees to pay interest thereon after default at the highest lawful contract rate applicable, but never to exceed 18% per annum. In the event it becomes necessary to employ an attorney to enforce collection of said account, Halliburton agrees to pay interest thereon after default at the highest rate in the amount of 20% of the amount of the unpaid account. These terms and conditions shall be governed by the law of the state where services are performed or equipment or materials are furnished.

Halliburton warrants only title to the products, supplies and materials and that the same are free from defects in workmanship and materials. THERE ARE NO WARRANTIES, EXPRESS OR IMPLIED, OF MERCHANTABILITY, FITNESS FOR A PARTICULAR PURPOSE OR OTHERWISE WHICH EXTEND BEYOND THOSE STATED IN THE IMMEDIATELY PRECEDING SENTENCE. Halliburton's liability and customer's exclusive remedy in any cause of action (whether in contract, tort, product liability, breach of warranty or otherwise) arising out of the sale or use of any products, supplies or materials is expressly limited to the replacement of such products, supplies or materials on their return to Halliburton or, at Halliburton's option, to the allowance to the customer of credit for the cost of such items. In no event shall Halliburton be liable for special, incidental, indirect, punitive or consequential damages.

[illegible]

AS PER ATTACHED BULK MATERIAL DELIVERY TICKET NO.

B- 967146

7928 75

WAS JOB SATISFACTORILY COMPLETED?

WAS OPERATION OF EQUIPMENT SATISFACTORY?

WAS PERFORMANCE OF PERSONNEL SATISFACTORY?

X [Signature]
CUSTOMER OR HIS AGENT (PLEASE PRINT)

x RJA2-J146-2
CUSTOMER OR HIS AGENT (SIGNATURE)

WE CERTIFY THAT THE FAIR LABOR STANDARDS ACT OF 1938, AS AMENDED HAS BEEN COMPLIED WITH IN THE PRODUCTION OF GOODS AND OR WITH RESPECT TO SERVICES FURNISHED UNDER THIS CONTRACT.

Donald Fleming
HALLIBURTON OPERATOR

**HALLIBURTON
APPROVAL**

FIELD OFFICE

**SUB
TOTAL**

12,124 19

**APPLICABLE TAXES WILL
BE ADDED ON INVOICE.**

BULK MATERIALS DELIVERY AND TICKET CONTINUATION



FOR INVOICE AND
TICKET NO. 331672

DATE 07-06-92	CUSTOMER ORDER NO.	WELL NO. AND FARM Haygood #B-3	COUNTY Rio Blanco	STATE Colo.
CHARGE TO Chevron USA		OWNER Same	CONTRACTOR Otis Unit	
MAILING ADDRESS		DELIVERED FROM Vernal, Utah	LOCATION CODE 55685	PREPARED BY J C Brewer
CITY & STATE		DELIVERED TO Location	TRUCK NO. 4647-7706	RECEIVED BY
No. B 967146				

PRICE REFERENCE	SECONDARY REF. OR PART NO.	CODE		DESCRIPTION	UNITS 1		UNITS 2		UNIT PRICE	AMOUNT	
		L	D		QTY.	MEAS.	QTY.	MEAS.			
504-043	516.00272			Premium AG-250 Cement	385	sk			8.86	2,879.50	
507-775	516.00144			Halad 322 Mixed .6%	183	lb			6.35	1,162.05	
				7-6-92							
504-043	516.00272			Premium AG-250 cement	50	sk			8.86	443.00	
507-775	516.00144			Halad-322 mixed .6%	28	lb			6.35	177.80	
				7-7-92							
504-043	516.00272			Premium AG-250 CEMENT	275	sk			8.86	2436.50	
507-775	516.00144			Halad-322 mixed .6%	155	lb			6.35	984.25	
				7-8-92							
504-043	516.00272			Premium AG 250 CEMENT	185	sk			8.86	1637.10	
507-775	516.00144			Halad-322 mixed .6%	104	lb			6.35	660.40	
507-706				Calcium Chloride 2%	1	sk			32.50	32.50	
		</									