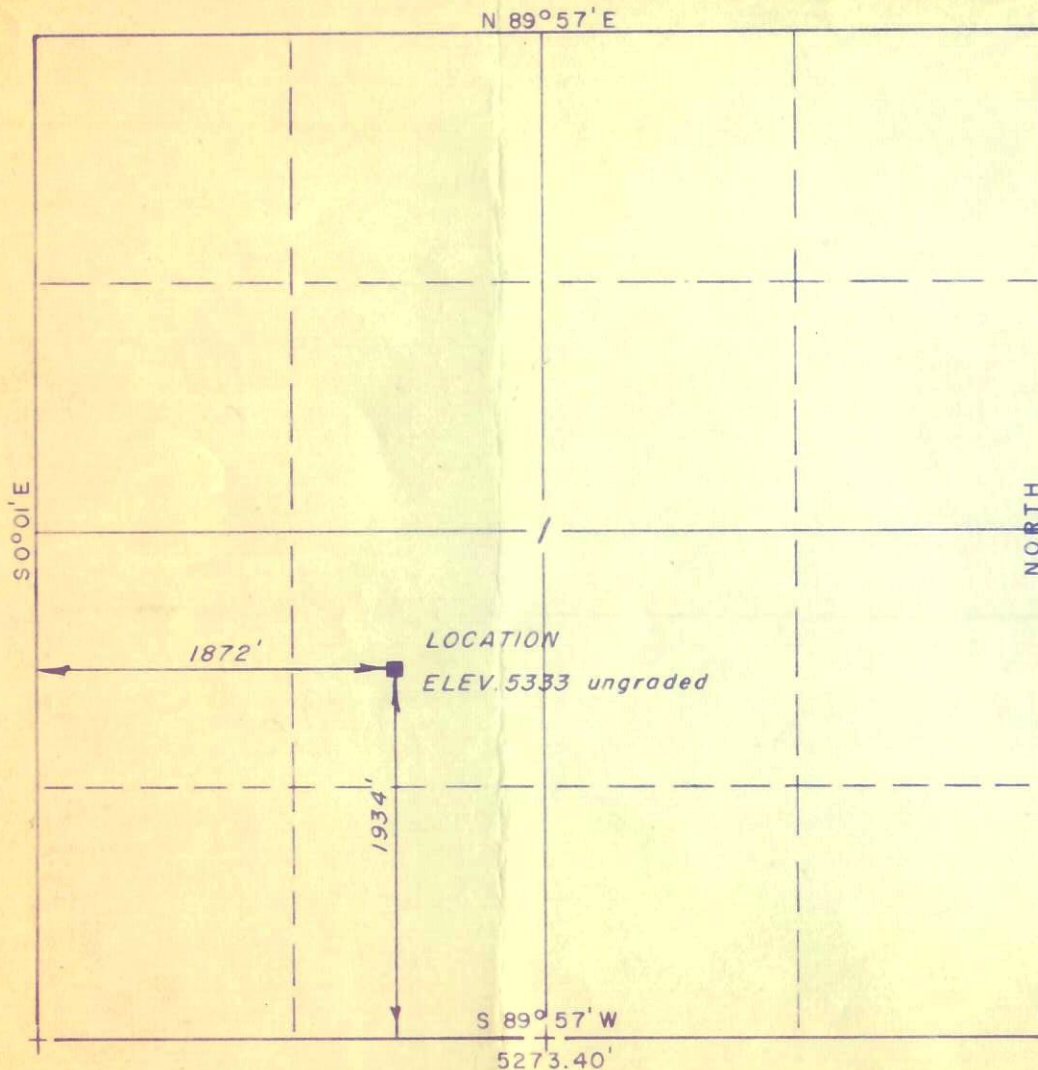


T1N, R102W, 6th P.M.



+ = Corners Located (Brass Caps)

PROJECT

H.P. McLISH
WELL LOCATION AS SHOWN IN THE
NE 1/4 - SW 1/4, SEC. 1, T1N, R102W,
6th P.M. RIO BLANCO COUNTY, COLO.

RECEIVED
DEC 22 1965

OIL & GAS
CONSERVATION COMMISSION

CERTIFICATE

THIS IS TO CERTIFY THAT THE ABOVE PLAT WAS PREPARED
FROM FIELD NOTES OF ACTUAL SURVEYS MADE BY ME OR UNDER
MY SUPERVISION AND THAT THE SAME ARE TRUE AND CORRECT
TO THE BEST OF MY KNOWLEDGE AND BELIEF.

Nelson J. Marshall

REGISTERED LAND SURVEYOR
REGISTRATION NO 5839 COLO.

00065137

65 537

Uintah Engineering & Land Surveying BOX 330 VERNAL, UTAH	SCALE	1" = 1000'	DATE	10 Dec 1965
	PARTY	G S — T W	REFERENCES	GLO Township Plat
	WEATHER	Snowing	FILE	McLISH H.P.