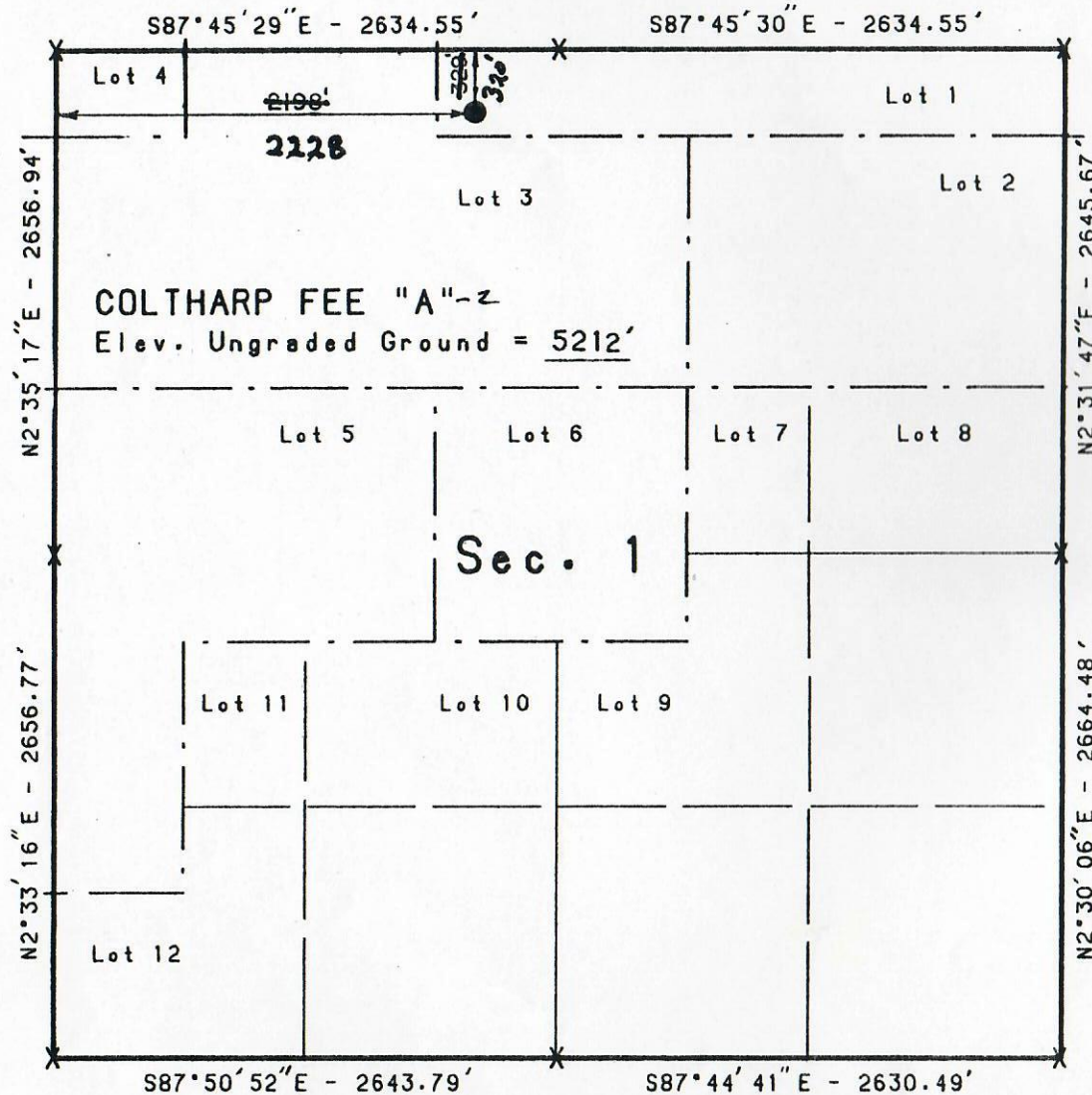


T1N, R102W, 6th P.M.



X = SECTION CORNERS LOCATED

BEARINGS ALONG SECTION LINES ARE BASED FROM THE COLORADO STATE GRID.

PROJECT

AURAQWEST CAPITAL CORP.

Well location, COLTHARP FEE "A" located as shown in Lot #1 (NE1/4 NW1/4) of Section 1, T1N, R102W, 6th P.M. Rio Blanco County, Colorado.

BASIS OF ELEVATION

BASIS OF ELEVATION IS THE RANGELY FIELD SURVEY CONTROL. ESTABLISHED BY UINTAH ENGINEERING AND LAND SURVEYING, INC.



CERTIFICATE

THIS IS TO CERTIFY THAT THE ABOVE PLAT WAS PREPARED FROM FIELD NOTES OF ACTUAL SURVEYS MADE BY ME OR UNDER MY SUPERVISION AND THAT THE SAME ARE TRUE AND CORRECT TO THE BEST OF MY KNOWLEDGE AND BELIEF.

*Robert J. Anderson*

REGISTERED LAND SURVEYOR  
REGISTRATION NO 5839  
STATE OF COLORADO

Revised: 9-15-88

UINTAH ENGINEERING & LAND SURVEYING  
P.O. BOX Q - 85 SOUTH - 200 EAST  
VERNAL, UTAH - 84078

SCALE 1" = 1000'	DATE 2-10-88
PARTY L.D.T. G.S. J.R.S.	REFERENCES SECTION BREAKDOWN
WEATHER COLD	FILE AURAQWEST CAPITAL CORP.