



Access Road



00053554

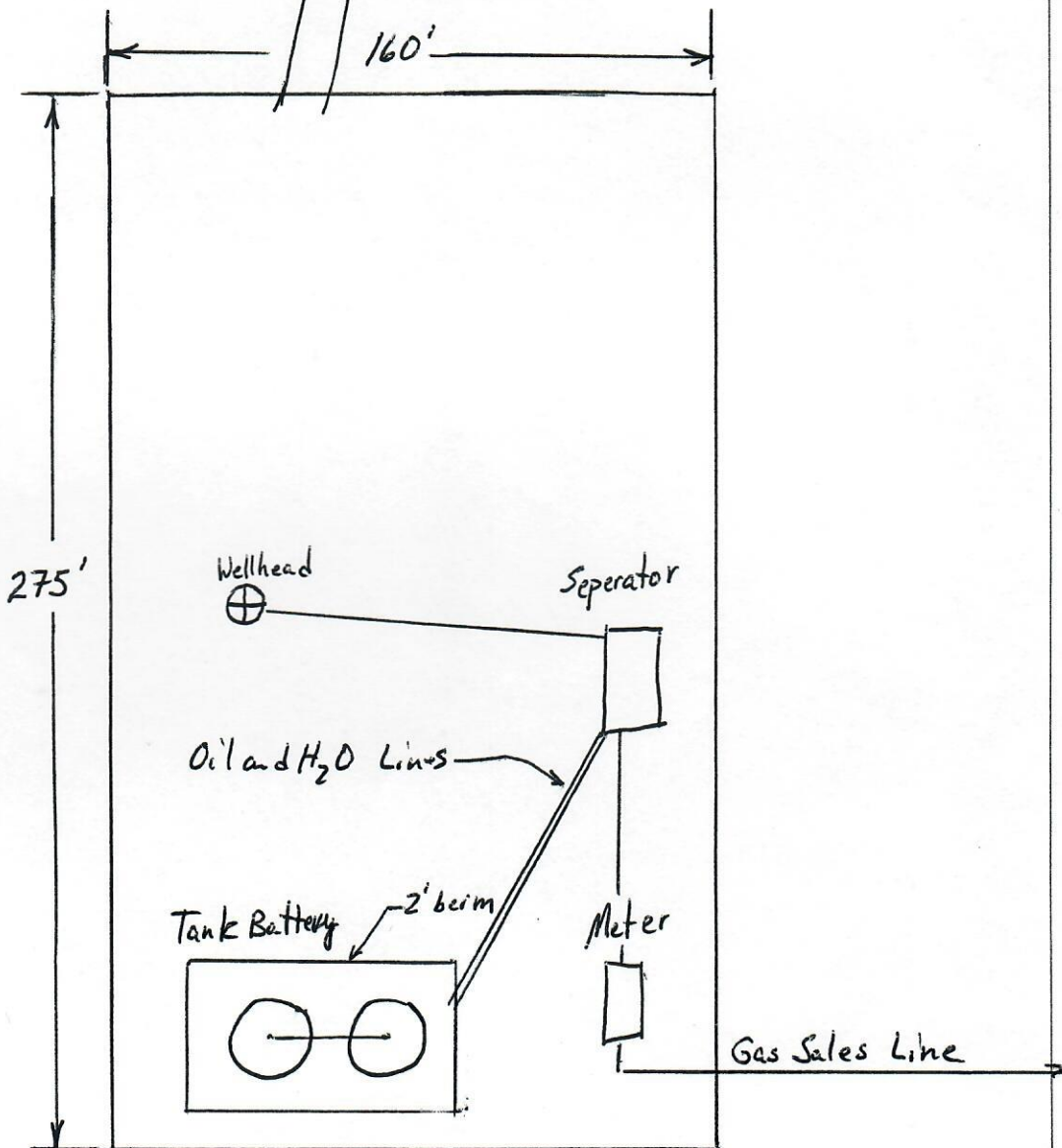


Exhibit #6
Proposed Production
Facilities
Fed. # 16-24-1N-103W
NOT TO SCALE

13-782 500 SHEETS FILLER 5 SQUARE
42-381 50 SHEETS EYE EASE 5 SQUARE
42-382 100 SHEETS EYE EASE 5 SQUARE
42-383 100 SHEETS EYE EASE 5 SQUARE
42-384 100 SHEETS EYE EASE 5 SQUARE
42-385 100 SHEETS EYE EASE 5 SQUARE
42-386 100 SHEETS EYE EASE 5 SQUARE
42-387 100 SHEETS EYE EASE 5 SQUARE
42-388 100 SHEETS EYE EASE 5 SQUARE
42-389 100 SHEETS EYE EASE 5 SQUARE
42-390 200 RECYCLED WHITE 5 SQUARE
Made in U.S.A.

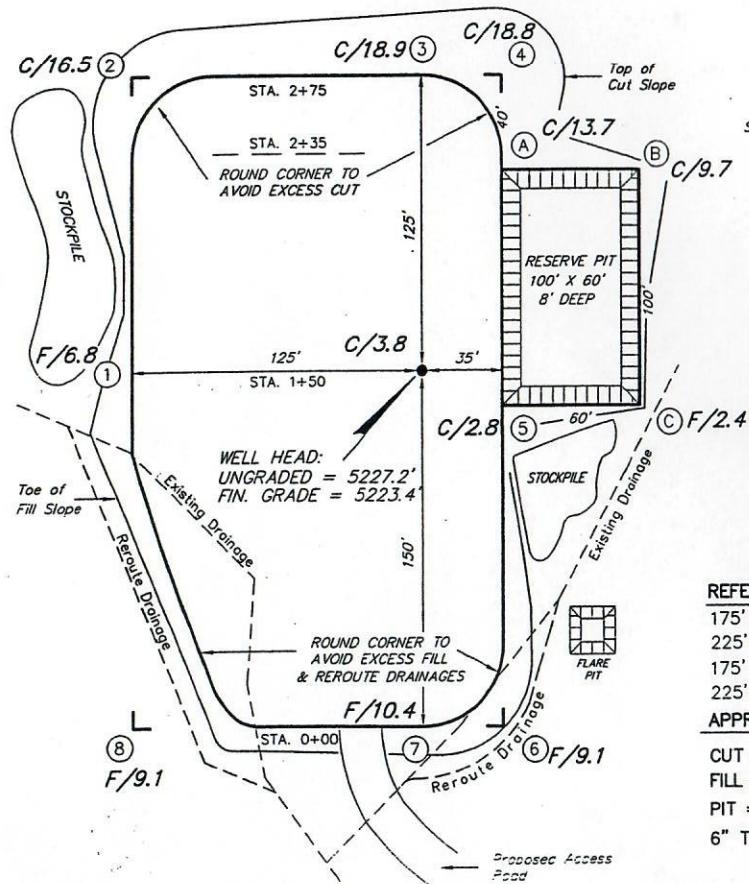


BONNEVILLE FUELS CORPORATION

FEDERAL #16-24-1N-103W
SEC. 16, T1N, R103W, 6th P.M.



SCALE: 1" = 50'

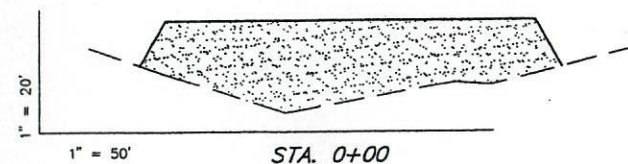
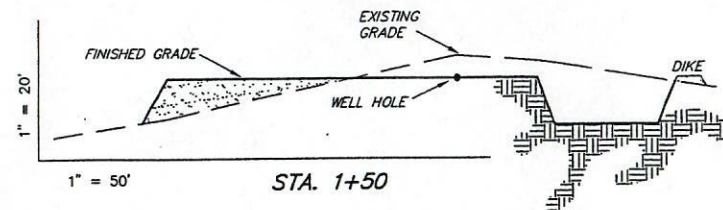
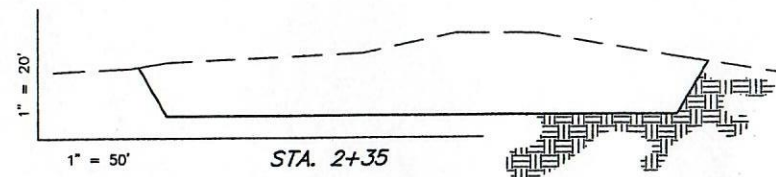
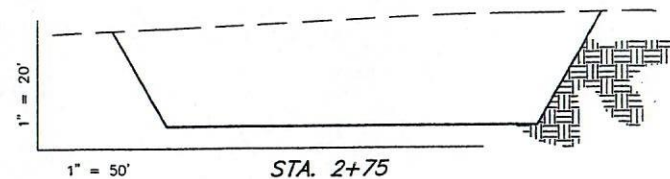


REFERENCE POINTS

175' NORTH = 5211.6'
225' NORTH = 5213.7'
175' EAST = 5213.5'
225' EAST = 5217.9'

APPROXIMATE YARDAGES

CUT = 8,590 Cu. Yds.
FILL = 8,580 Cu. Yds.
PIT = 1,100 Cu. Yds.
6" TOPSOIL = 930 Cu. Yds.



SURVEYED BY: DS DG

DRAWN BY: BRW

DATE: 11/25/97

SCALE: 1" = 50'

FILE: BON1624

Tri State
Land Surveying, Inc.

REG. 721-2501
38 WEST 100 NORTH WERNHILL, UT 84078

Exhibit # 7

TYPICAL RIG LAYOUT

FEDERAL #16-24-1N-103W

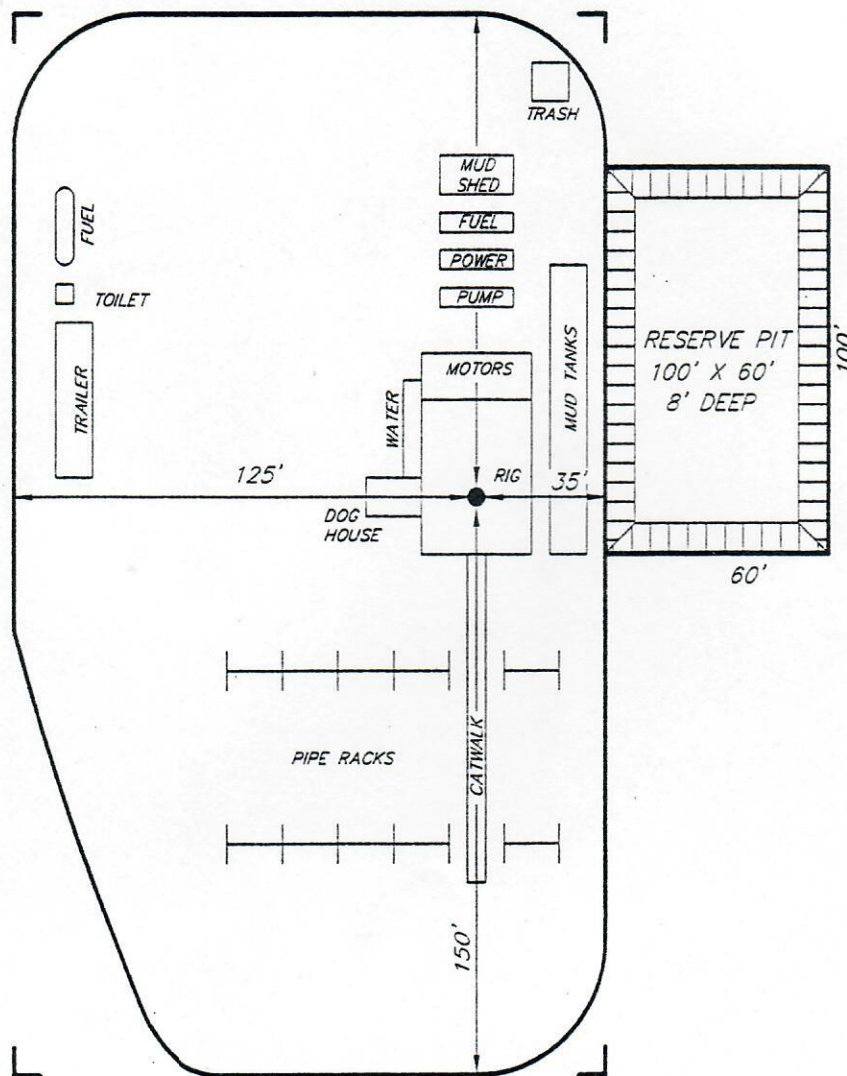


Exhibit #8

Tri State
Land Surveying, Inc.
(801) 781-2501
38 WEST 100 NORTH, VERNAL, UTAH 84078