

T1N, R103W, 6th P.M.

BONNEVILLE FUELS CORPORATION

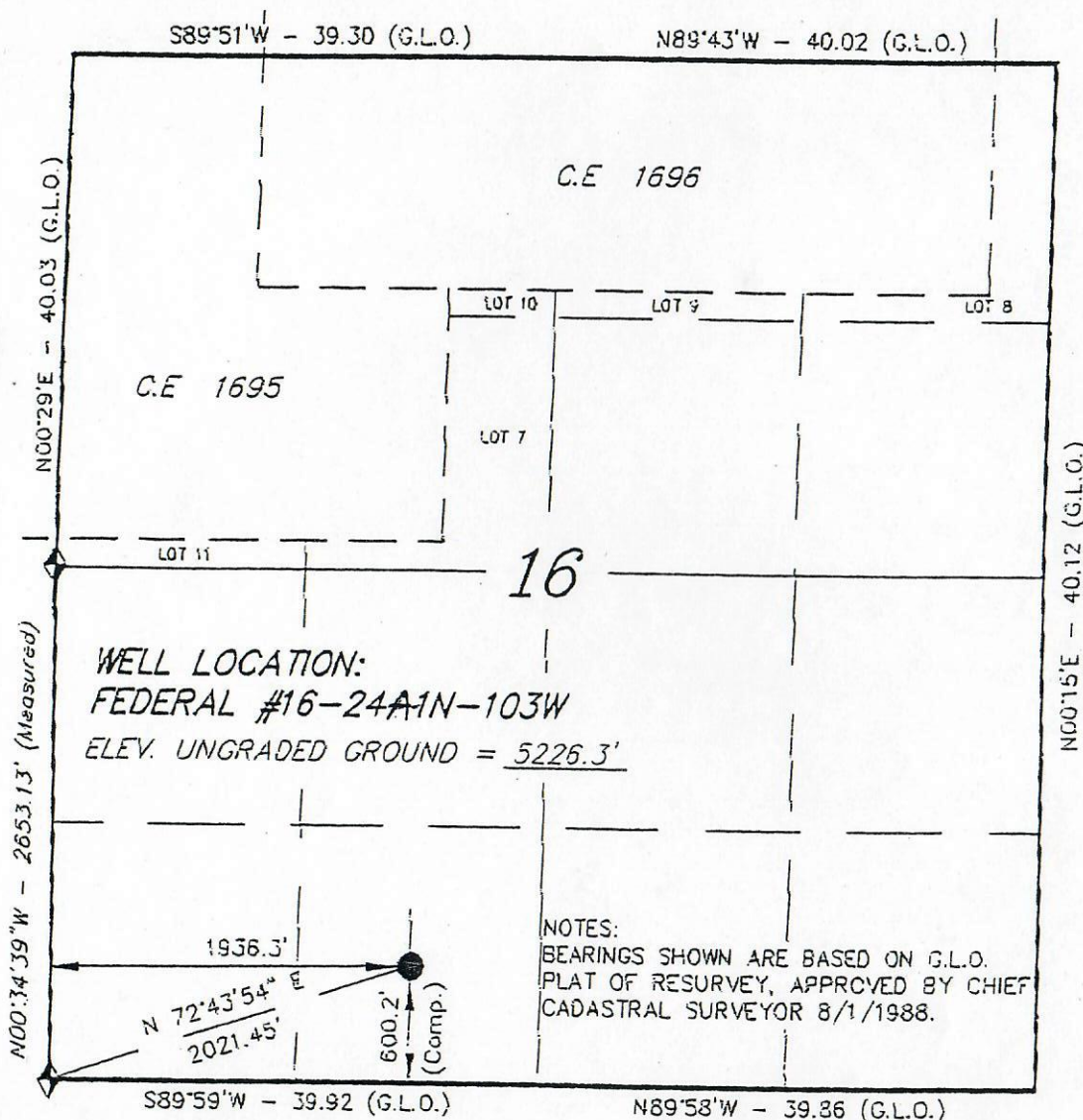
WELL LOCATION, FEDERAL
#16-24A1N-103W, LOCATED AS SHOWN IN
THE SE 1/4 SW 1/4 OF SECTION 16,
T1N, R103W, 6th P.M. RIO BLANCO
COUNTY, COLORADO.



103-00007



00053571



THIS IS TO CERTIFY THAT THE ABOVE PLAT WAS
PREPARED FROM FIELD NOTES OF ACTUAL SURVEYS
MADE BY ME OR UNDER MY SUPERVISION AND THAT
THE SAME ARE TRUE AND CORRECT TO THE BEST OF
MY KNOWLEDGE AND BELIEF. GENE STEWART

Gene Stewart
REGISTERED LAND SURVEYOR
REGISTRATION NO. 9186
STATE OF COLORADO

TRI STATE LAND SURVEYING & CONSULTING

38 WEST 100 NORTH - VERNAL, UTAH 84078
(801) 781-2501

SCALE: 1" = 1000'	SURVEYED BY: OS BG
DATE: REV: 6-19-98	WEATHER:
NOTES:	FILE # BON1624

◆ = SECTION CORNERS LOCATED

BASIS OF ELEV; U.S.G.S. 7-1/2 min QUAD (BANTY POINT COLO.)