

Wellhead Closure Checklist

COGCC Rule 911.a.(4) Environmental Site Closure Assessment Field Form

Additional attachments (optional):		Pit Closure <u> </u>		Tank Battery Closure <u> </u>		Flowline Closure 11/21/18	Partially Buried Vault Closure <u> </u>
Site Name & COGCC Facility Number: Shable #14-25		Date: 10/02/23				Remediation Project #: 30776	
Associated Wells: 05-123-28013		Age of Site: Years				Number of Photos Attached: 2	
Location: (GPS coordinates of wellhead or southeastern most wellhead for multiple)						Estimated Facility Size (acres):	
40.576860 / -104.521340							
General Condition of Site: (General observations regarding housekeeping, corrosion, waste management, etc.)							
Good Condition							
USCS Soil Type: Sandy CLAY				Estimated Depth to Groundwater: Approx. 20-40'			
Hydrocarbon Impacted Soils / Spills: (Note estimated size and if impact appears to be surficial or extends to an unknown depth)							
Strong hydrocarbon odor and staining observed within excavation.							
Salt Crusted Soils or Impacted Vegetation: (Note estimated size and if impact appears to be surficial or extends to an unknown depth)							
None observed.							
Wellhead(s)							
Well API	05-123-28013						
Age	Years						
Condition of surface around wellhead	Good - No Odor/Staining						
PID Readings	WH-N: 0.9	WH-E: 0.8	WH-S: 1.0	WH-W: 0.5			
Condition of subsurface (staining present)	HC odor and staining observed						
PID Readings	31.1	26.4	19.2	63.8	161.2		
Sample taken? Location/Sample ID#	WH-SS-01	WH-SS-02	WH-SS-03	WH-SS-04	WH-FS-01		
Photo Number(s)	See photolog						
Other observations regarding wellheads:							
Well casing cut/capped following assessment.							
Summary							
Was impacted soil identified?							
No		Yes - less than 10 cubic yards		Yes - more than 10 cubic yards			
Total number of samples field screened: 9				Total number of samples collected: 9			
Highest PID Reading: 161.2				Total number of samples submitted to lab for analysis: 5			
If more than 10 cubic yards of impacted soil were observed:							
Vertical extent:				Estimated spill volume:			
N/A							
Lateral extent:				Volume of soil removed:			
Is additional investigation required?							
Was groundwater encountered during the investigation?							
<input checked="" type="checkbox"/> No		Yes - not impacted or in contact with impacted soils		Yes - groundwater impacted and/or in contact with impacted soils			
Measured depth to groundwater:				Was remedial groundwater removal conducted? Yes No			
Date Groundwater was encountered:				Commencement date of removal:			
Sheen on groundwater? Yes No				Volume of groundwater removed prior to sampling:			
Free product observed? Yes No				Volume of groundwater removed post sampling:			
Total number of samples collected:				Total Volume of groundwater removed:			
Total number of samples submitted to lab for analysis:							



FIGURES

Figure 1: Topographic Site Location Map

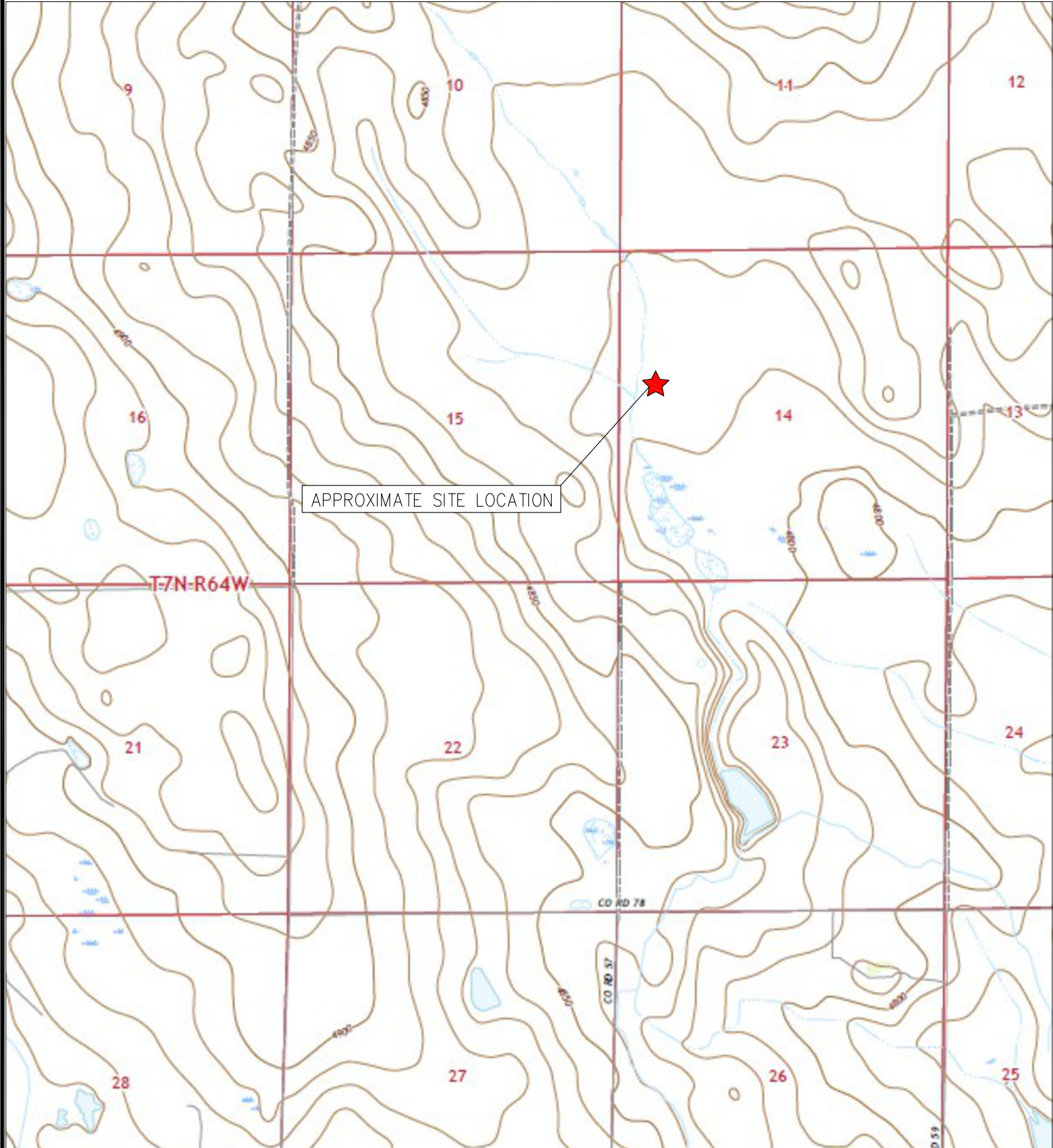
Figure 2: Aerial Site Location Map

Figure 3: Sample Location Map

Figure 4: Soil Analytical Map

Figure 5: Polycyclic Aromatic Hydrocarbons Map

Figure 6: Metals in Soil Map



APPROXIMATE SITE LOCATION

T7N-R64W

CO RD 78

CO RD 57

RD 59



TOPOGRAPHIC SITE LOCATION MAP
 SHABLE #14-25
 CLOSURE ASSESSMENT
 40.576860 / -104.521340
 NW¼ NW¼ SEC.14 T7N R64W 6PM
 WELD COUNTY, COLORADO
 API # 05-123-28013
 REMEDIATION # 30776



EAGLE
 ENVIRONMENTAL
 CONSULTING, LLC

8000 W 44th Ave, Wheat Ridge, CO 80033
 Ph: 303-433-0479 • F: 303-325-5449

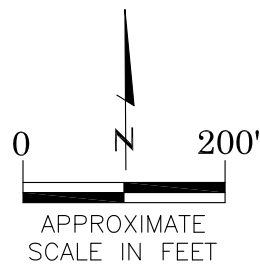
SOURCE: USGS 7.5 MINUTE TOPOGRAPHIC MAP, GALETON, CO QUADRANGLE 2022

FIGURE NO. 1



LEGEND

 FORMER SHABLE #14-25 WELLHEAD (PLUGGED AND ABANDONED)



AERIAL SITE LOCATION MAP
SHABLE #14-25
CLOSURE ASSESSMENT
40.576860 / -104.521340
NW¼ NW¼ SEC.14 T7N R64W 6PM
WELD COUNTY, COLORADO
API # 05-123-28013
REMEDIAION # 30776

FIGURE NO.
2

DRAWN BY:
EL



EAGLE
ENVIRONMENTAL
CONSULTING, LLC
8000 W 44th Ave, Wheat Ridge, CO 80033
Ph: 303-433-0479 • F: 303-325-5449

LEGEND

- WELLHEAD ASSESSMENT BOUNDARIES
- SS-02 APPROXIMATE LOCATION OF SOIL SAMPLES SUBMITTED FOR LABORATORY ANALYSIS
- SS-02 APPROXIMATE LOCATION OF SOIL SAMPLES FIELD SCREENED, ONLY, WITH PHOTOIONIZATION DETECTOR



SAMPLE LOCATION MAP
SHABLE #14-25
CLOSURE ASSESSMENT
40.576860 / -104.521340
NW¼ NW¼ SEC.14 T7N R64W 6PM
WELD COUNTY, COLORADO
API # 05-123-28013
REMEDATION # 30776

FIGURE NO.
3

DRAWN BY:
EL



EAGLE
ENVIRONMENTAL
CONSULTING, LLC
8000 W 44th Ave, Wheat Ridge, CO 80033
Ph: 303-433-0479 • F: 303-325-5449

LEGEND

- WELLHEAD ASSESSMENT BOUNDARIES
- APPROXIMATE LOCATION OF SOIL SAMPLES SUBMITTED FOR LABORATORY ANALYSIS

PARAMETERS

SAMPLE LOCATION	
DATE	
DEPTH (FEET)	
B	= BENZENE (mg/kg)
T	= TOLUENE (mg/kg)
E	= ETHYLBENZENE (mg/kg)
X	= TOTAL XYLENES (mg/kg)
N	= NAPHTHALENE (mg/kg)
G	= TPH-GRO (mg/kg)
D	= TPH-DRO (mg/kg)
R	= TPH-RRO (mg/kg)
1,2,4-TMB	= 1,2,4 TRIMETHYLBENZENE (mg/kg)
1,3,5-TMB	= 1,3,5 TRIMETHYLBENZENE (mg/kg)
Brn	= BORON (mg/L)
EC	= SPECIFIC CONDUCTANCE (mmhos/cm)
SAR	= SODIUM ADSORPTION RATIO
pH	= pH (pH UNITS)

mg/kg = MILLIGRAMS PER KILOGRAM
 mg/L = MILLIGRAMS PER LITER
 mmhos/cm = MILLIMHOS PER CENTIMETER

TPH-GRO = TOTAL PETROLEUM HYDROCARBONS - GASOLINE RANGE ORGANICS
 TPH-DRO = TOTAL PETROLEUM HYDROCARBONS - DIESEL RANGE ORGANICS
 TPH-RRO = TOTAL PETROLEUM HYDROCARBONS - RESIDUAL RANGE ORGANICS

NOTES:
 VALUES PRESENTED WITH A LESS THAN SYMBOL (<) DID NOT CONTAIN CONCENTRATIONS AT OR ABOVE LABORATORY DETECTION LIMITS

VALUES PRESENTED IN **BOLD** EXCEED ECMC TABLE 915-1 REGULATORY LIMITS

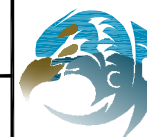
ECMC = ENERGY & CARBON MANAGEMENT COMMISSION

SOIL ANALYTICAL MAP

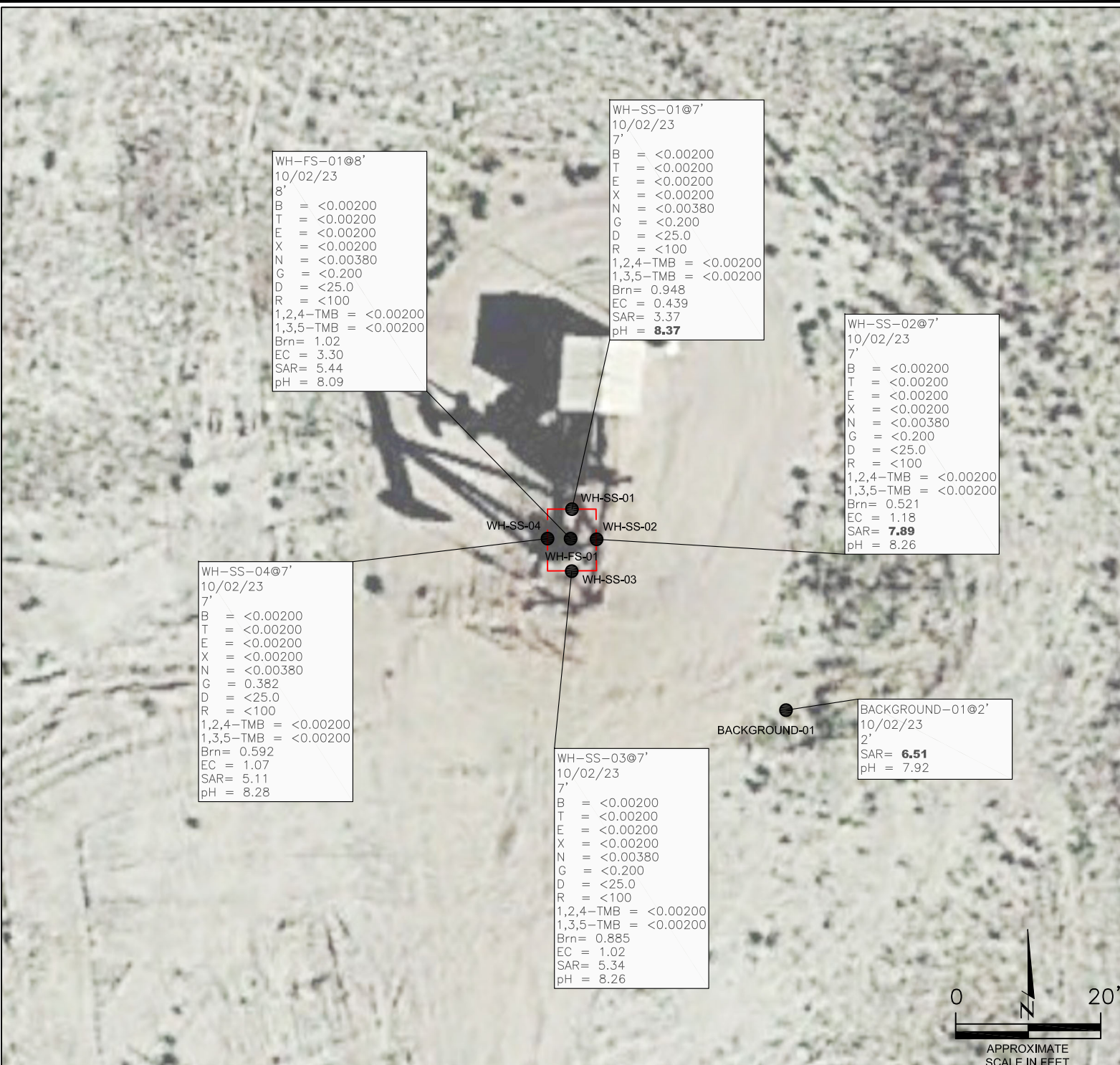
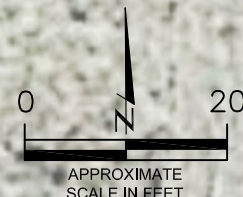
SHABLE #14-25
 CLOSURE ASSESSMENT
 40.576860 / -104.521340
 NW¼ NW¼ SEC.14 T7N R64W 6PM
 WELD COUNTY, COLORADO
 API # 05-123-28013
 REMEDIATION # 30776

FIGURE NO.
4

DRAWN BY:
EL



EAGLE
 ENVIRONMENTAL
 CONSULTING, LLC
 8000 W 44th Ave, Wheat Ridge, CO 80033
 Ph: 303-433-0479 • F: 303-325-5449



WH-FS-01@8'
 10/02/23
 8'
 B = <0.00200
 T = <0.00200
 E = <0.00200
 X = <0.00200
 N = <0.00380
 G = <0.200
 D = <25.0
 R = <100
 1,2,4-TMB = <0.00200
 1,3,5-TMB = <0.00200
 Brn= 1.02
 EC = 3.30
 SAR= 5.44
 pH = 8.09

WH-SS-01@7'
 10/02/23
 7'
 B = <0.00200
 T = <0.00200
 E = <0.00200
 X = <0.00200
 N = <0.00380
 G = <0.200
 D = <25.0
 R = <100
 1,2,4-TMB = <0.00200
 1,3,5-TMB = <0.00200
 Brn= 0.948
 EC = 0.439
 SAR= 3.37
 pH = **8.37**

WH-SS-02@7'
 10/02/23
 7'
 B = <0.00200
 T = <0.00200
 E = <0.00200
 X = <0.00200
 N = <0.00380
 G = <0.200
 D = <25.0
 R = <100
 1,2,4-TMB = <0.00200
 1,3,5-TMB = <0.00200
 Brn= 0.521
 EC = 1.18
 SAR= **7.89**
 pH = 8.26

WH-SS-03@7'
 10/02/23
 7'
 B = <0.00200
 T = <0.00200
 E = <0.00200
 X = <0.00200
 N = <0.00380
 G = <0.200
 D = <25.0
 R = <100
 1,2,4-TMB = <0.00200
 1,3,5-TMB = <0.00200
 Brn= 0.885
 EC = 1.02
 SAR= 5.34
 pH = 8.26

WH-SS-04@7'
 10/02/23
 7'
 B = <0.00200
 T = <0.00200
 E = <0.00200
 X = <0.00200
 N = <0.00380
 G = 0.382
 D = <25.0
 R = <100
 1,2,4-TMB = <0.00200
 1,3,5-TMB = <0.00200
 Brn= 0.592
 EC = 1.07
 SAR= 5.11
 pH = 8.28

BACKGROUND-01@2'
 10/02/23
 2'
 SAR= **6.51**
 pH = 7.92

LEGEND

- WELLHEAD ASSESSMENT BOUNDARIES
- APPROXIMATE LOCATION OF SOIL SAMPLES SUBMITTED FOR LABORATORY ANALYSIS

PARAMETERS

SAMPLE LOCATION
DATE SAMPLE COLLECTED
APPROXIMATE DEPTH

POLYCYCLIC AROMATIC HYDROCARBONS (PAHs) (mg/kg)

mg/kg = MILLIGRAMS PER KILOGRAM

NOTES:

VALUES PRESENTED WITH A LESS THAN SYMBOL (<) DID NOT CONTAIN CONCENTRATIONS AT OR ABOVE LABORATORY DETECTION LIMITS

VALUES PRESENTED IN **BOLD** EXCEED ECMC TABLE 915-1 REGULATORY LIMITS

VALUES PRESENTED WITH AN ASTERISK (*) EXCEED ECMC TABLE 915-1 GROUNDWATER SOIL SCREENING LEVELS, ONLY.

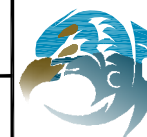
ECMC = ENERGY & CARBON MANAGEMENT COMMISSION

POLYCYCLIC AROMATIC HYDROCARBONS MAP

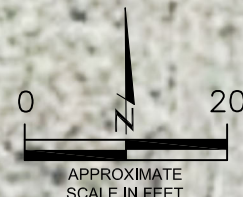
SHABLE #14-25
CLOSURE ASSESSMENT
40.576860 / -104.521340
NW¼ NW¼ SEC.14 T7N R64W 6PM
WELD COUNTY, COLORADO
API # 05-123-28013
REMEDATION # 30776

FIGURE NO.
5

DRAWN BY:
EL



EAGLE
ENVIRONMENTAL
CONSULTING, LLC
8000 W 44th Ave, Wheat Ridge, CO 80033
Ph: 303-433-0479 • F: 303-325-5449



WH-FS-01@8'
10/02/23
8'

1-Methylnaphthalene = <0.002
2-Methylnaphthalene = <0.002
Acenaphthene = <0.020
Anthracene = <0.020
Benzo(a)anthracene = <0.005
Benzo(a)pyrene = <0.020
Benzo(b)fluoranthene = <0.020
Benzo(k)fluoranthene = <0.020
Chrysene = <0.020
Dibenzo(a,h)anthracene = <0.020
Fluoranthene = <0.020
Fluorene = <0.020
Indeno(1,2,3-CD)pyrene = <0.020
Pyrene = <0.020

WH-SS-01@7'
10/02/23
7'

1-Methylnaphthalene = <0.002
2-Methylnaphthalene = <0.002
Acenaphthene = <0.020
Anthracene = <0.020
Benzo(a)anthracene = <0.005
Benzo(a)pyrene = <0.020
Benzo(b)fluoranthene = <0.020
Benzo(k)fluoranthene = <0.020
Chrysene = <0.020
Dibenzo(a,h)anthracene = <0.020
Fluoranthene = <0.020
Fluorene = <0.020
Indeno(1,2,3-CD)pyrene = <0.020
Pyrene = <0.020

WH-SS-02@7'
10/02/23
7'

1-Methylnaphthalene = **0.007***
2-Methylnaphthalene = 0.005
Acenaphthene = <0.020
Anthracene = <0.020
Benzo(a)anthracene = <0.005
Benzo(a)pyrene = <0.020
Benzo(b)fluoranthene = <0.020
Benzo(k)fluoranthene = <0.020
Chrysene = <0.020
Dibenzo(a,h)anthracene = <0.020
Fluoranthene = <0.020
Fluorene = <0.020
Indeno(1,2,3-CD)pyrene = <0.020
Pyrene = <0.020

WH-SS-01
WH-SS-02
WH-FS-01
WH-SS-03
WH-SS-04

WH-SS-04@7'
10/02/23
7'

1-Methylnaphthalene = **0.015***
2-Methylnaphthalene = 0.013
Acenaphthene = <0.020
Anthracene = <0.020
Benzo(a)anthracene = <0.005
Benzo(a)pyrene = <0.020
Benzo(b)fluoranthene = <0.020
Benzo(k)fluoranthene = <0.020
Chrysene = <0.020
Dibenzo(a,h)anthracene = <0.020
Fluoranthene = <0.020
Fluorene = <0.020
Indeno(1,2,3-CD)pyrene = <0.020
Pyrene = <0.020

WH-SS-03@7'
10/02/23
7'

1-Methylnaphthalene = <0.002
2-Methylnaphthalene = <0.002
Acenaphthene = <0.020
Anthracene = <0.020
Benzo(a)anthracene = <0.005
Benzo(a)pyrene = <0.020
Benzo(b)fluoranthene = <0.020
Benzo(k)fluoranthene = <0.020
Chrysene = <0.020
Dibenzo(a,h)anthracene = <0.020
Fluoranthene = <0.020
Fluorene = <0.020
Indeno(1,2,3-CD)pyrene = <0.020
Pyrene = <0.020

LEGEND

- WELLHEAD ASSESSMENT BOUNDARIES
- APPROXIMATE LOCATION OF SOIL SAMPLES SUBMITTED FOR LABORATORY ANALYSIS

PARAMETERS

SAMPLE LOCATION
 DATE SAMPLE COLLECTED
 APPROXIMATE DEPTH
 Arsenic = (mg/kg)
 Barium = (mg/kg)
 Cadmium = (mg/kg)
 Chromium (VI) = (mg/kg)
 Copper = (mg/kg)
 Lead = (mg/kg)
 Nickel = (mg/kg)
 Selenium = (mg/kg)
 Silver = (mg/kg)
 Zinc = (mg/kg)

mg/kg = MILLIGRAMS PER KILOGRAM

NOTES:
 VALUES PRESENTED WITH A LESS THAN SYMBOL (<) DID NOT CONTAIN CONCENTRATIONS AT/OR ABOVE LABORATORY REPORTING LIMITS AND/OR MINIMUM DETECTION LIMITS.

VALUES PRESENTED IN **BOLD** EXCEED ECMC TABLE 915-1 REGULATORY LIMITS.

*VALUES EXCEED ECMC TABLE 915-1 PROTECTION OF GROUNDWATER SOIL SCREENING LEVELS, ONLY.

**ACHIEVABLE PRACTICAL QUANTITATIVE LIMITS FOR HEXAVALENT CHROMIUM (Cr VI) IN SOILS IS IN THE RANGE OF 0.1 TO 1 mg/kg.

***ARSENIC IS NATURALLY OCCURRING IN COLORADO. LOCAL CLEAN-UP LEVEL (5.05 mg/kg) IS 1.25*BACKGROUND (4.04 mg/kg).

ECMC = ENERGY & CARBON MANAGEMENT COMMISSION

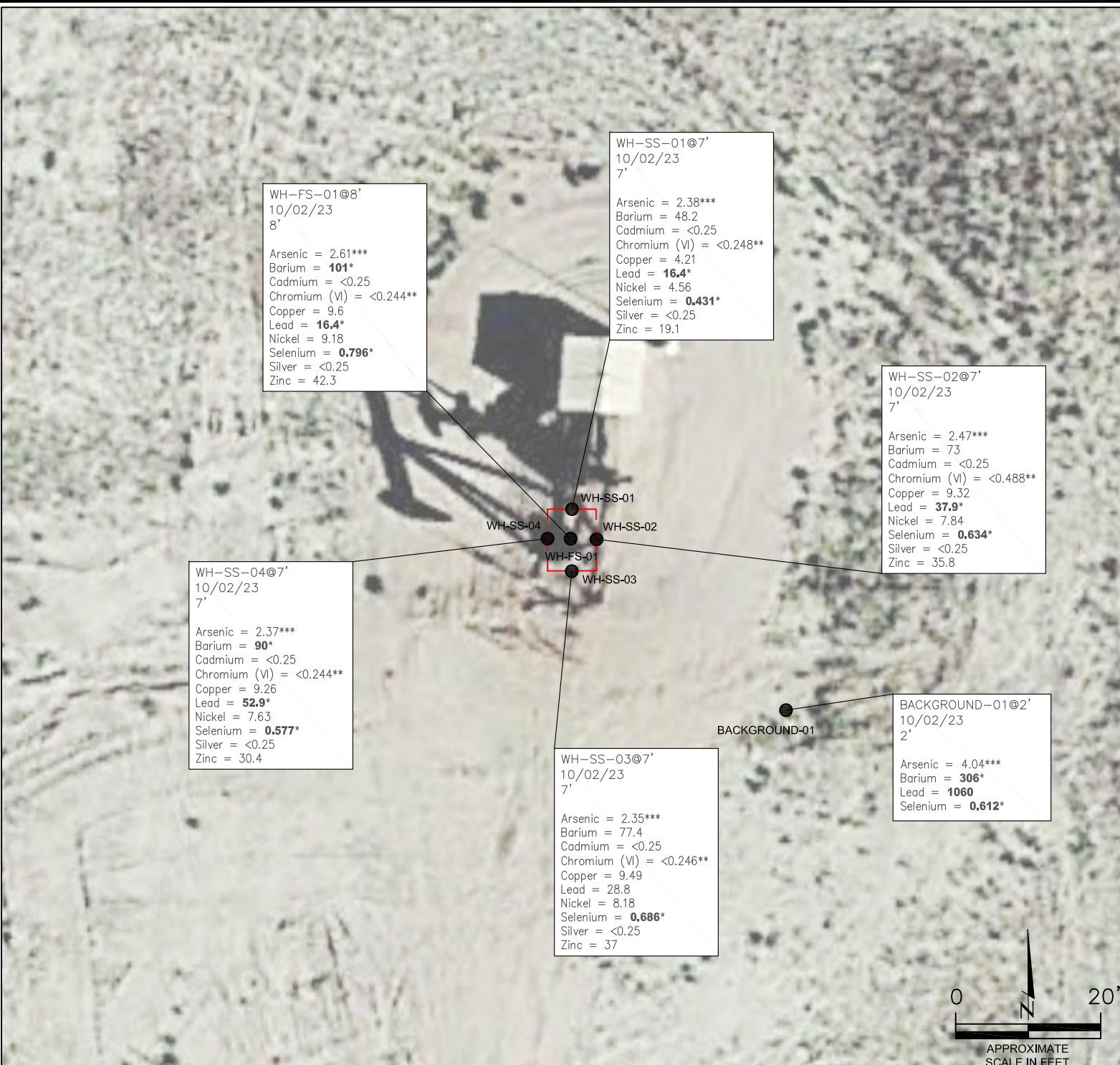
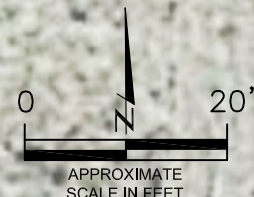
METALS IN SOIL MAP
 SHABLE #14-25
 CLOSURE ASSESSMENT
 40.576860 / -104.521340
 NW¼ NW¼ SEC.14 T7N R64W 6PM
 WELD COUNTY, COLORADO
 API # 05-123-28013
 REMEDIATION # 30776

FIGURE NO.
6

DRAWN BY:
EL



EAGLE
 ENVIRONMENTAL
 CONSULTING, LLC
 8000 W 44th Ave, Wheat Ridge, CO 80033
 Ph: 303-433-0479 • F: 303-325-5449



WH-FS-01@8'
 10/02/23
 8'
 Arsenic = 2.61***
 Barium = **101***
 Cadmium = <0.25
 Chromium (VI) = <0.244**
 Copper = 9.6
 Lead = **16.4***
 Nickel = 9.18
 Selenium = **0.796***
 Silver = <0.25
 Zinc = 42.3

WH-SS-01@7'
 10/02/23
 7'
 Arsenic = 2.38***
 Barium = 48.2
 Cadmium = <0.25
 Chromium (VI) = <0.248**
 Copper = 4.21
 Lead = **16.4***
 Nickel = 4.56
 Selenium = **0.431***
 Silver = <0.25
 Zinc = 19.1

WH-SS-02@7'
 10/02/23
 7'
 Arsenic = 2.47***
 Barium = 73
 Cadmium = <0.25
 Chromium (VI) = <0.488**
 Copper = 9.32
 Lead = **37.9***
 Nickel = 7.84
 Selenium = **0.634***
 Silver = <0.25
 Zinc = 35.8

WH-SS-04@7'
 10/02/23
 7'
 Arsenic = 2.37***
 Barium = **90***
 Cadmium = <0.25
 Chromium (VI) = <0.244**
 Copper = 9.26
 Lead = **52.9***
 Nickel = 7.63
 Selenium = **0.577***
 Silver = <0.25
 Zinc = 30.4

WH-SS-03@7'
 10/02/23
 7'
 Arsenic = 2.35***
 Barium = 77.4
 Cadmium = <0.25
 Chromium (VI) = <0.246**
 Copper = 9.49
 Lead = 28.8
 Nickel = 8.18
 Selenium = **0.686***
 Silver = <0.25
 Zinc = 37

BACKGROUND-01@2'
 10/02/23
 2'
 Arsenic = 4.04***
 Barium = **306***
 Lead = **1060**
 Selenium = **0.612***



TABLES

Table 1: Photoionization Detector Reading Summary

Table 2: Soil Analytical Results Summary

TABLE 1
PHOTOIONIZATION DETECTOR READING SUMMARY
SHABLE #14-25
CLOSURE ASSESSMENT
40.576860 / -104.521340
NW¼ NW¼ SEC.14 T7N R64W 6PM
WELD COUNTY, COLORADO
API # 05-123-28013
REMEDIATION # 30776

Sample Location (Latitude/Longitude)	Date	Approximate Depth (feet)	PID Reading (ppm-v)	Lab Submission (Y/N)
WH-SS-01 @ 7' (40.576907 / -104.521346)	10/02/23	7	31.1	Y
WH-SS-02 @ 7' (40.576897 / -104.521332)	10/02/23	7	26.4	Y
WH-SS-03 @ 7' (40.576882 / -104.521349)	10/02/23	7	19.2	Y
WH-SS-04 @ 7' (40.576896 / -104.521357)	10/02/23	7	63.8	Y
WH-FS-01 @ 8' (40.576895 / -104.521347)	10/02/23	8	161.2	Y
Background-01 @ 2' (40.576831 / -104.521243)	10/02/23	2	1.8	Y
WH-N @ 0.5' (40.576917 / -104.521344)	10/02/23	0.5	0.9	N
WH-E @ 0.5' (40.576897 / -104.521313)	10/02/23	0.5	0.8	N
WH-S @ 0.5' (40.576874 / -104.521345)	10/02/23	0.5	1.0	N
WH-W @ 0.5' (40.576898 / -104.521369)	10/02/23	0.5	0.5	N
(Y/N) = Yes or No ppm-v = parts per million by volume PID = Photoionization Detector				



TABLE 2
SOIL ANALYTICAL RESULTS SUMMARY
SHABLE #14-25
CLOSURE ASSESSMENT
40.576860 / -104.521340
NW¼ NW¼ SEC.14 T7N R64W 6PM
WELD COUNTY, COLORADO
API # 05-123-28013
REMEDATION # 30776

Sample Location		WH-SS-01 @ 7'	WH-SS-02 @ 7'	WH-SS-03 @ 7'	WH-SS-04 @ 7'	WH-FS-01 @ 8'	Background-01 @ 2'
(Latitude / Longitude)		(40.576907 / -104.521346)	(40.576897 / -104.521332)	(40.576882 / -104.521349)	(40.576896 / -104.521357)	(40.576895 / -104.521347)	(40.576831 / -104.521243)
Sample Date		10/2/2023	10/2/2023	10/2/2023	10/2/2023	10/2/2023	10/2/2023
Sample Depth		7'	7'	7'	7'	8'	2'
PID Reading (ppm-v)		31.1	26.4	19.2	63.8	16.2	1.8
Regulatory Limits							
Chemical of Concern	Units	ECMC Table 915-1 RSSLs	ECMC Table 915-1 GSSLs	Local Clean-Up Level			
VOCs							
Benzene	mg/kg	1.2	0.0026	--	<0.00200	<0.00200	<0.00200
Toluene	mg/kg	490	0.69	--	<0.00200	<0.00200	<0.00200
Ethylbenzene	mg/kg	5.8	0.78	--	<0.00200	<0.00200	<0.00200
Total Xylenes	mg/kg	58	9.9	--	<0.00200	<0.00200	<0.00200
Naphthalene	mg/kg	2	0.0038	--	<0.00380	<0.00380	<0.00380
1,2,4-Trimethylbenzene	mg/kg	30	0.0081	--	<0.00200	<0.00200	<0.00200
1,3,5-Trimethylbenzene	mg/kg	27	0.0087	--	<0.00200	<0.00200	<0.00200
TOTAL PETROLEUM HYDROCARBONS							
TPH-GRO	mg/kg	500	--	--	<0.200	<0.200	<0.200
TPH-DRO	mg/kg	500	--	--	<25.0	<25.0	<25.0
TPH-RRO	mg/kg	500	--	--	<100	<100	<100
POLYCYCLIC AROMATIC HYDROCARBONS							
1-Methyl-naphthalene	mg/kg	18	0.006	--	<0.002	0.007*	<0.002
2-Methyl-naphthalene	mg/kg	24	0.019	--	<0.002	0.005	<0.002
Acenaphthene	mg/kg	360	0.55	--	<0.020	<0.020	<0.020
Anthracene	mg/kg	1800	5.8	--	<0.020	<0.020	<0.020
Benzo(a)-anthracene	mg/kg	1.1	0.011	--	<0.005	<0.005	<0.005
Benzo(a)-pyrene	mg/kg	0.11	0.24	--	<0.020	<0.020	<0.020
Benzo(b)-fluoranthene	mg/kg	1.1	0.3	--	<0.020	<0.020	<0.020
Benzo(k)-fluoranthene	mg/kg	11	2.9	--	<0.020	<0.020	<0.020
Chrysene	mg/kg	110	9	--	<0.020	<0.020	<0.020
Dibenzo(a,h)-anthracene	mg/kg	0.11	0.096	--	<0.020	<0.020	<0.020
Fluoranthene	mg/kg	240	8.9	--	<0.020	<0.020	<0.020
Fluorene	mg/kg	240	0.54	--	<0.020	<0.020	<0.020
Indeno(1,2,3-cd)-pyrene	mg/kg	1.1	0.98	--	<0.020	<0.020	<0.020
Pyrene	mg/kg	180	1.3	--	<0.020	<0.020	<0.020
SOIL SUITABILITY (Inorganics)							
Boron	mg/L	2	--	--	0.948	0.521	0.885
pH	standard unit	6-8.3	--	--	8.37	8.26	8.28
Sodium Adsorption Ratio (SAR)	--	<6	--	--	3.37	7.89	5.34
Specific Conductance (EC)	mmhos/cm	<4	--	--	0.439	1.18	1.02
METALS							
Arsenic	mg/kg	0.68***	0.29***	5.05***	2.38***	2.47***	2.35***
Barium	mg/kg	15000	82	--	48.2	73	77.4
Cadmium	mg/kg	71	0.38	--	<0.25	<0.25	<0.25
Copper	mg/kg	3100	46	--	4.21	9.32	9.49
Lead	mg/kg	400	14	--	16.4*	37.9*	28.8*
Nickel	mg/kg	1500	26	--	4.56	7.84	8.18
Selenium	mg/kg	390	0.26	--	0.431*	0.634*	0.686*
Silver	mg/kg	390	0.8	--	<0.25	<0.25	<0.25
Zinc	mg/kg	23000	370	--	19.1	35.8	37
Hexavalent Chromium	mg/kg	0.3**	0.00067**	0.1 to 1.0**	<0.248**	<0.488**	<0.246**
ECMC = Energy & Carbon Management Commission		NA - Not Analyzed		VOCs - Volatile Organic Compounds			
mg/kg = milligrams per kilogram							
mmhos/cm = millimhos per centimeter		RSSLs = Residential Soil Screening Levels					
PID = Photoionization Detector		GSSLs = Protection of Groundwater Soil Screening Levels					
ppm-v = parts per million by volume		TPH-GRO = Total Petroleum Hydrocarbons - Gasoline Range Organics					
mg/L = milligrams per liter		TPH-DRO = Total Petroleum Hydrocarbons - Diesel Range Organics					
SAR = Sodium Adsorption Ratio		TPH-RRO = Total Petroleum Hydrocarbons - Residual Range Organics					
Notes:							
Values presented with a less than symbol (<) did not contain concentrations at or above the laboratory reporting limit and/or minimum detection limit.							
Values presented in BOLD exceed ECMC Table 915-1 Regulatory Limits. Values presented with asterisk (*) exceed ECMC Table 915-1 GSSLs, only.							
**Achievable practical quantitative limits for Hexavalent Chromium in soils is in the range of 0.1 to 1 mg/kg.							
***Arsenic is naturally occurring in Colorado. The Local Clean-up Level (5.05 mg/kg) is 1.25*Background (4.04 mg/kg).							



ATTACHMENT A

Photo Log

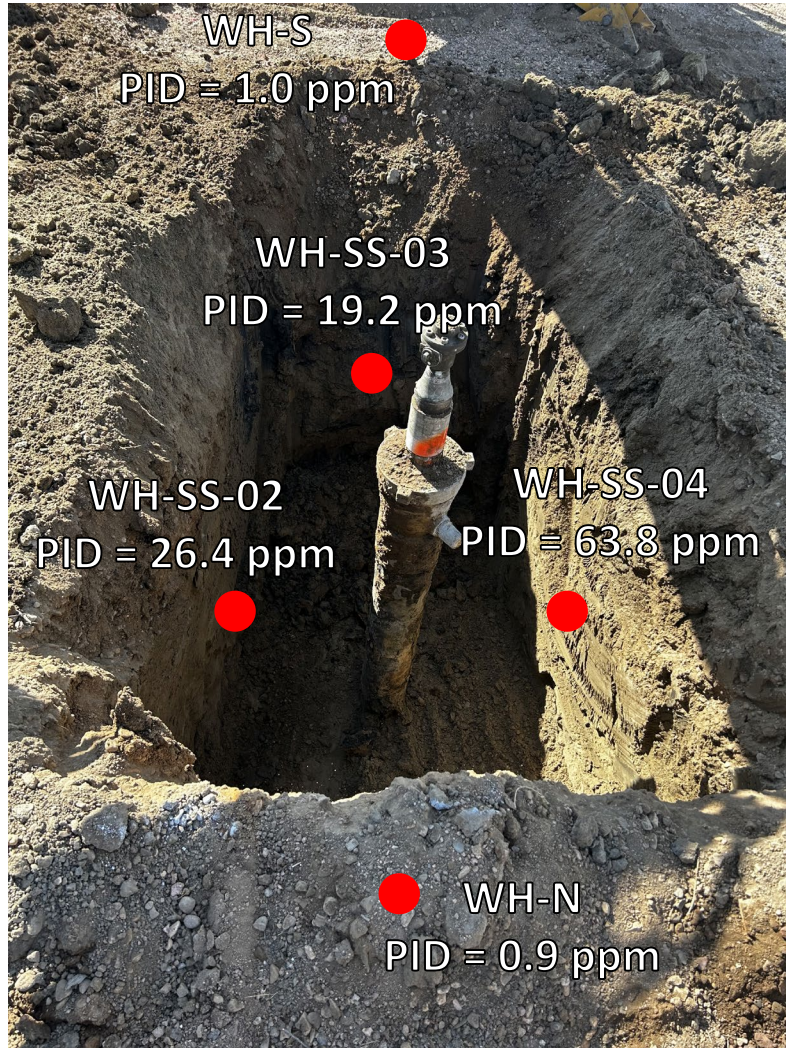
Shable #14-25
API # 05-123-28013
Remediation # 30776

Closure Assessment

October 2023

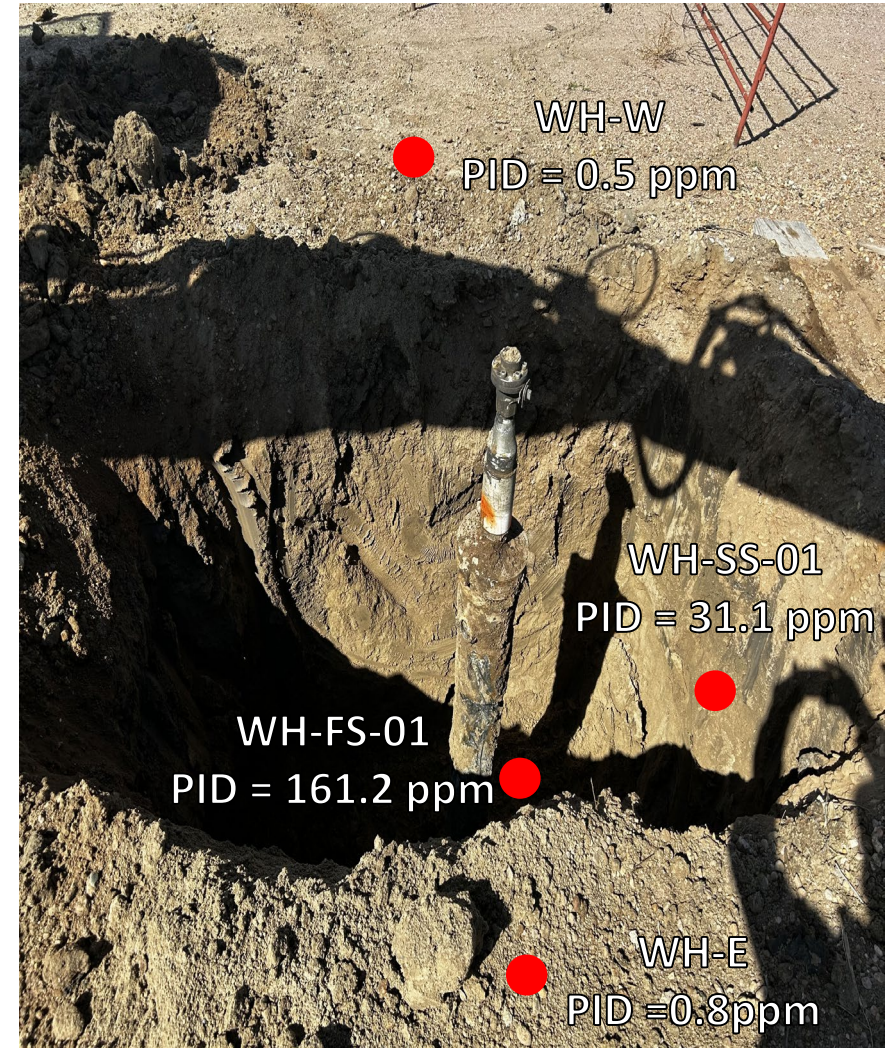


Wellhead Excavation – 10/02/23



Looking south

Strong petroleum hydrocarbon odor observed; gray staining observed



Looking west

Strong petroleum hydrocarbon odor observed; gray staining observed



ATTACHMENT B

Laboratory Analytical Reports



October 20, 2023

Eagle Environmental Consulting, LLC

Martin C Eckert III

8000 W 44th Ave

Wheat Ridge CO 80033

Project Name - Noble - Shable #14-25

Project Number - -

Attached are your analytical results for Noble - Shable #14-25 received by Origins Laboratory, Inc. October 02, 2023. This project is associated with Origins project number Y310052-01.

The analytical results in the following report were analyzed under the guidelines of EPA Methods. These methods are identified as follows; "SW" are defined in SW-846, "EPA" are defined in 40CFR part 136 and "SM" are defined in the most current revision of Standard Methods For the Examination of Water and Wastewater.

The analytical results apply specifically to the samples and analyses specified per the attached Chain of Custody. As such, this report shall not be reproduced except in full, without the written approval of Origin's laboratory.

Unless otherwise noted, the analytical results for all soil samples are reported on a wet weight basis. All analytical analyses were performed under NELAP guidelines unless noted by a data qualifier.

Any holding time exceedances, deviations from the method specifications or deviations from Origins Laboratory's Standard Operating Procedures are outlined in the case narrative.

Thank you for selecting Origins for your analytical needs. Please contact us with any questions concerning this report, or if we can help with anything at all.

Origins Laboratory, Inc.
303.433.1322
o-squad@oelabinc.com



Eagle Environmental Consulting, LLC
8000 W 44th Ave
Wheat Ridge CO 80033

Martin C Eckert III
Project Number: -
Project: Noble - Shable #14-25

CROSS REFERENCE REPORT

Sample ID	Laboratory ID	Matrix	Date Sampled	Date Received
WH-SS-01@7'	Y310052-01	Soil	October 2, 2023 10:34	10/02/2023 14:30
WH-SS-02@7'	Y310052-02	Soil	October 2, 2023 10:36	10/02/2023 14:30
WH-SS-03@7'	Y310052-03	Soil	October 2, 2023 10:38	10/02/2023 14:30
WH-SS-04@7'	Y310052-04	Soil	October 2, 2023 10:40	10/02/2023 14:30
WH-FS-01@8'	Y310052-05	Soil	October 2, 2023 10:42	10/02/2023 14:30

Origins Laboratory, Inc.



The results in this report apply to the samples analyzed in accordance with the chain of custody document. This analytical report must be reproduced in its entirety.

Eagle Environmental Consulting, LLC
 8000 W 44th Ave
 Wheat Ridge CO 80033

Martin C Eckert III
 Project Number: -
 Project: Noble - Shable #14-25

www.originslaboratory.com
Y310052
 page 1 of 1

ORIGINS
 LABORATORY, INC

Client: Eagle Environmental Consulting
 Project Manager: Martin Eckert III
 Address: 8000 W 44th Ave
 Project Name: Shable #14-25
 Wheat Ridge, CO 80033
 Project Number:
 Telephone Number: 303-433-0474
 Samples Collected By: SL
 Email Address: ml23@eagle-env.com

Sample ID Description	Date Sampled	Time Sampled	# of Containers	Preservative				Matrix			Analysis	Sample Instructions
				Unpreserved	HCl	HNO ₃	Other	Groundwater	Soil	Air Summa #		
WH-SS-010 P	10/02/13	1034	3	X				X				EUSAR 1pk = 1
WH-SS-020 P		1036	1									Saturated Probe Pcp 2
WH-SS-030 P		1038	1									3
WH-SS-040 P		1040	1									4
WH-FS-010 B		1042	1									5
												6
												7
												8
												9
												10

Relinquished By: [Signature] Date: 10/02/13 Time: 1430
 Relinquished By: [Signature] Date: 10/2/13 Time: 1430

Turnaround Time: Same Day 24 Hr 48 Hr 72 Hr Standard

Fax: 303.265.9645 | Phone: 303.433.1322 | Denver, CO 80211 | 1725 Elk Place

Temp Received: 1A Date Results Needed: 10/15/13

Origins Laboratory, Inc.

The results in this report apply to the samples analyzed in accordance with the chain of custody document. This analytical report must be reproduced in its entirety.

Eagle Environmental Consulting, LLC
 8000 W 44th Ave
 Wheat Ridge CO 80033

Martin C Eckert III
 Project Number: -
 Project: Noble - Shable #14-25

Origins Laboratory

F-012207-01-R1
 Effective Date: 01/09/12

Sample Receipt Checklist

Origins Work Order: 130052 Client: Eagle
 Checklist Completed by: EHS Client Project ID: shable #14-25
 Date/time completed: 10/12/23 Shipped Via: HD
 (UPS, FedEx, Hand Delivered, Pick-up, etc.)
 Airbill #: N/A
 Matrix(s) Received: (Check all that apply): Soil/Solid Water Other: _____
 Cooler Number/Temperature: 118 °c / _____ °c / _____ °c (Describe)
 Thermometer ID: 7004

Requirement Description	Yes	No	N/A	Comments (if any)
If samples require cooling, was the temperature between 0°C to ≤ 6°C ⁽¹⁾ ?		<input checked="" type="checkbox"/>		<u>SD</u>
Is there ice present (document if blue ice is used)	<input checked="" type="checkbox"/>			
Are custody seals present on cooler? (if so, document in comments if they are signed and dated, broken or intact)		<input checked="" type="checkbox"/>		
Are custody seals present on each sample container? (if so, document in comments if they are signed and dated, broken or intact)		<input checked="" type="checkbox"/>		
Were all samples received intact ⁽¹⁾ ?	<input checked="" type="checkbox"/>			
Was adequate sample volume provided ⁽¹⁾ ?	<input checked="" type="checkbox"/>			
Are short holding time analytes or samples with HTs due within 48 hours present ⁽¹⁾ ?		<input checked="" type="checkbox"/>		
Is a chain-of-custody (COC) present and filled out completely ⁽¹⁾ ?	<input checked="" type="checkbox"/>			
Does the COC agree with the number and type of sample bottles received ⁽¹⁾ ?	<input checked="" type="checkbox"/>			
Do the sample IDs on the bottle labels match the COC ⁽¹⁾ ?	<input checked="" type="checkbox"/>			
Is the COC properly relinquished by the client with date and time recorded ⁽¹⁾ ?	<input checked="" type="checkbox"/>			
For volatiles in water – is there headspace (> ¼ inch bubble) present? If yes, contact client and note in narrative.			<input checked="" type="checkbox"/>	
Are samples preserved that require preservation and was it checked ⁽¹⁾ ? (note ID of confirmation instrument used in comments) / (preservation is not confirmed for subcontracted analyses in order to insure sample integrity)/(pH <2 for samples preserved with HNO ₃ , HCL, H ₂ SO ₄) / (pH >10 for samples preserved with NaAsO ₂ +NaOH, ZnAc+NaOH)			<input checked="" type="checkbox"/>	
Additional Comments (if any):				

⁽¹⁾If NO, then contact the client before proceeding with analysis and note date, time and person contacted as well as the corrective action to in the additional comments (above) and the case narrative.

Reviewed by (Project Manager) [Signature]

Date/Time Reviewed 10/14/23

Origins Laboratory, Inc.

[Signature]

The results in this report apply to the samples analyzed in accordance with the chain of custody document. This analytical report must be reproduced in its entirety.

Eagle Environmental Consulting, LLC
 8000 W 44th Ave
 Wheat Ridge CO 80033

Martin C Eckert III
 Project Number: -
 Project: Noble - Shable #14-25

WH-SS-01@7'

10/2/2023 10:34:00AM

Analyte	Result	Min Detection Limit	Reporting Limit	Units	Dilution	Batch	Prepared	Analyzed	Notes
---------	--------	---------------------	-----------------	-------	----------	-------	----------	----------	-------

Origins Laboratory, Inc.
Y310052-01 (Soil)

Boron (DTPA Sorbitol)

Boron	0.948		0.0994	mg/L	1	B3J0513	10/05/2023	10/06/2023	
-------	-------	--	--------	------	---	---------	------------	------------	--

DRO/ORO by EPA 8015D

Diesel (C10-C28)	ND		25.0	mg/kg	1	B3J0302	10/03/2023	10/05/2023	U
Residual Range Organics (C28-C40)	ND		100	"	"	"	"	"	U

Surrogate: o-Terphenyl	76.0 %		50-150			"	"	"	
------------------------	--------	--	--------	--	--	---	---	---	--

GBTEX+TMBs by 8260D

1,2,4-Trimethylbenzene	ND		0.00200	mg/kg	1	B3J0423	10/04/2023	10/06/2023	U
1,3,5-Trimethylbenzene	ND		0.00200	"	"	"	"	"	U
Benzene	ND		0.00200	"	"	"	"	"	U
Ethylbenzene	ND		0.00200	"	"	"	"	"	U
Naphthalene	ND		0.00380	"	"	"	"	"	U
Toluene	ND		0.00200	"	"	"	"	"	U
Xylenes, total	ND		0.00200	"	"	"	"	"	U
Gasoline Range Hydrocarbons	ND		0.200	"	"	"	"	"	U

Origins Laboratory, Inc.



The results in this report apply to the samples analyzed in accordance with the chain of custody document. This analytical report must be reproduced in its entirety.

Eagle Environmental Consulting, LLC
 8000 W 44th Ave
 Wheat Ridge CO 80033

Martin C Eckert III
 Project Number: -
 Project: Noble - Shable #14-25

WH-SS-01@7'

10/2/2023 10:34:00AM

Analyte	Result	Min Detection Limit	Reporting Limit	Units	Dilution	Batch	Prepared	Analyzed	Notes
---------	--------	---------------------	-----------------	-------	----------	-------	----------	----------	-------

Origins Laboratory, Inc.
Y310052-01 (Soil)

GBTEX+TMBs by 8260D

Surrogate: 1,2-Dichloroethane-d4	110 %		70-130			B3J04 23	10/04/2023	10/06/2023	
Surrogate: Toluene-d8	97.5 %		70-130			"	"	"	
Surrogate: 4-Bromofluorobenzene	92.4 %		70-130			"	"	"	

Metals by Saturated Paste by EPA 6010

Calcium	0.890		0.499	meq/L	10	[CALC]	10/05/2023	10/06/2023	
Magnesium	ND		0.823	"	"	"	"	"	
Sodium	2.70		0.435	"	"	"	"	"	

PAH by EPA 8270E

1-Methylnaphthalene	ND		0.002	mg/kg	1	B3J0325	10/03/2023	10/07/2023	U
2-Methylnaphthalene	ND		0.002	"	"	"	"	"	U
Acenaphthene	ND		0.020	"	"	"	"	"	U
Anthracene	ND		0.020	"	"	"	"	"	U
Benzo (a) anthracene	ND		0.005	"	"	"	"	"	U
Benzo (a) pyrene	ND		0.020	"	"	"	"	"	U
Benzo (b) fluoranthene	ND		0.020	"	"	"	"	"	U
Benzo (k) fluoranthene	ND		0.020	"	"	"	"	"	U
Chrysene	ND		0.020	"	"	"	"	"	U
Dibenz (a,h) anthracene	ND		0.020	"	"	"	"	"	U

Origins Laboratory, Inc.



The results in this report apply to the samples analyzed in accordance with the chain of custody document. This analytical report must be reproduced in its entirety.

Eagle Environmental Consulting, LLC
 8000 W 44th Ave
 Wheat Ridge CO 80033

Martin C Eckert III
 Project Number: -
 Project: Noble - Shable #14-25

WH-SS-01@7'

10/2/2023 10:34:00AM

Analyte	Result	Min Detection Limit	Reporting Limit	Units	Dilution	Batch	Prepared	Analyzed	Notes
---------	--------	---------------------	-----------------	-------	----------	-------	----------	----------	-------

Origins Laboratory, Inc.
Y310052-01 (Soil)

PAH by EPA 8270E

Fluoranthene	ND		0.020	mg/kg	1	B3J0325	10/03/2023	10/07/2023	U
Fluorene	ND		0.020	"	"	"	"	"	U
Indeno (1,2,3-cd) pyrene	ND		0.020	"	"	"	"	"	U
Naphthalene	ND		0.002	"	"	"	"	"	U
Pyrene	ND		0.020	"	"	"	"	"	U

Surrogate: Fluorene-d10	94.1 %		60-130			"	"	"	
Surrogate: Anthracene-d10	100 %		60-130			"	"	"	
Surrogate: Pyrene-d10	102 %		60-130			"	"	"	
Surrogate: Benzo (a) pyrene-d12	98.9 %		60-130			"	"	"	

pH in Soil by 9045D

pH	8.37			pH Units	1	B3J0521	10/05/2023	10/06/2023	
----	------	--	--	----------	---	---------	------------	------------	--

SAR by 20B Saturated Paste

SAR	3.37		0.0100	SAR	1	B3J0517	10/05/2023	10/06/2023	
-----	------	--	--------	-----	---	---------	------------	------------	--

Specific Conductance Mod. 9050A

Specific Conductance (EC)	0.439		0.00500	mmhos/cm	1	B3J0521	10/05/2023	10/06/2023	
---------------------------	-------	--	---------	----------	---	---------	------------	------------	--

Origins Laboratory, Inc.



The results in this report apply to the samples analyzed in accordance with the chain of custody document. This analytical report must be reproduced in its entirety.

Eagle Environmental Consulting, LLC
 8000 W 44th Ave
 Wheat Ridge CO 80033

Martin C Eckert III
 Project Number: -
 Project: Noble - Shable #14-25

WH-SS-01@7'

10/2/2023 10:34:00AM

Analyte	Result	Min Detection Limit	Reporting Limit	Units	Dilution	Batch	Prepared	Analyzed	Notes
---------	--------	---------------------	-----------------	-------	----------	-------	----------	----------	-------

Waypoint Analytical, LLC.
Y310052-01 (Soil)

Total Metals by 6020B

Arsenic	2.38	0.0855	0.25	mg/Kg	5	L708881	10/05/2023	10/08/2023	
Barium	48.2	0.042	0.25	"	"	"	"	"	
Cadmium	ND	0.026	0.25	"	"	"	"	"	
Copper	4.21	0.0805	0.25	"	"	"	"	"	
Lead	16.4	0.031	0.25	"	"	"	"	"	
Nickel	4.56	0.0635	0.25	"	"	"	"	"	
Selenium	0.431	0.103	0.25	"	"	"	"	"	
Silver	ND	0.0067	0.25	"	"	"	"	"	
Zinc	19.1	0.535	2.5	"	"	"	"	"	

Total Metals by 7196A

Chromium, Hexavalent	ND	0.248	0.51	mg/Kg	1	L711246	10/02/2023	10/18/2023	
----------------------	----	-------	------	-------	---	---------	------------	------------	--

Origins Laboratory, Inc.



The results in this report apply to the samples analyzed in accordance with the chain of custody document. This analytical report must be reproduced in its entirety.

Eagle Environmental Consulting, LLC
 8000 W 44th Ave
 Wheat Ridge CO 80033

Martin C Eckert III
 Project Number: -
 Project: Noble - Shable #14-25

WH-SS-02@7'

10/2/2023 10:36:00AM

Analyte	Result	Min Detection Limit	Reporting Limit	Units	Dilution	Batch	Prepared	Analyzed	Notes
---------	--------	---------------------	-----------------	-------	----------	-------	----------	----------	-------

Origins Laboratory, Inc.
Y310052-02 (Soil)

Boron (DTPA Sorbitol)

Boron	0.521		0.0999	mg/L	1	B3J0513	10/05/2023	10/06/2023	
-------	-------	--	--------	------	---	---------	------------	------------	--

DRO/ORO by EPA 8015D

Diesel (C10-C28)	ND		25.0	mg/kg	1	B3J0302	10/03/2023	10/05/2023	U
Residual Range Organics (C28-C40)	ND		100	"	"	"	"	"	U

Surrogate: o-Terphenyl	76.1 %		50-150			"	"	"	
------------------------	--------	--	--------	--	--	---	---	---	--

GBTEX+TMBs by 8260D

1,2,4-Trimethylbenzene	ND		0.00200	mg/kg	1	B3J0423	10/04/2023	10/06/2023	U
1,3,5-Trimethylbenzene	ND		0.00200	"	"	"	"	"	U
Benzene	ND		0.00200	"	"	"	"	"	U
Ethylbenzene	ND		0.00200	"	"	"	"	"	U
Naphthalene	ND		0.00380	"	"	"	"	"	U
Toluene	ND		0.00200	"	"	"	"	"	U
Xylenes, total	ND		0.00200	"	"	"	"	"	U
Gasoline Range Hydrocarbons	ND		0.200	"	"	"	"	"	U

Origins Laboratory, Inc.



The results in this report apply to the samples analyzed in accordance with the chain of custody document. This analytical report must be reproduced in its entirety.

Eagle Environmental Consulting, LLC
 8000 W 44th Ave
 Wheat Ridge CO 80033

Martin C Eckert III
 Project Number: -
 Project: Noble - Shable #14-25

WH-SS-02@7'

10/2/2023 10:36:00AM

Analyte	Result	Min Detection Limit	Reporting Limit	Units	Dilution	Batch	Prepared	Analyzed	Notes
---------	--------	---------------------	-----------------	-------	----------	-------	----------	----------	-------

Origins Laboratory, Inc.
Y310052-02 (Soil)

GBTEX+TMBs by 8260D

Surrogate: 1,2-Dichloroethane-d4	112 %		70-130			B3J04 23	10/04/2023	10/06/2023	
Surrogate: Toluene-d8	96.9 %		70-130			"	"	"	
Surrogate: 4-Bromofluorobenzene	94.1 %		70-130			"	"	"	

Metals by Saturated Paste by EPA 6010

Calcium	1.36		0.499	meq/L	10	[CALC]	10/04/2023	10/05/2023	
Magnesium	0.873		0.823	"	"	"	"	"	
Sodium	8.34		0.435	"	"	"	"	"	

PAH by EPA 8270E

1-Methylnaphthalene	0.007		0.002	mg/kg	1	B3J0325	10/03/2023	10/07/2023	
2-Methylnaphthalene	0.005		0.002	"	"	"	"	"	
Acenaphthene	ND		0.020	"	"	"	"	"	U
Anthracene	ND		0.020	"	"	"	"	"	U
Benzo (a) anthracene	ND		0.005	"	"	"	"	"	U
Benzo (a) pyrene	ND		0.020	"	"	"	"	"	U
Benzo (b) fluoranthene	ND		0.020	"	"	"	"	"	U
Benzo (k) fluoranthene	ND		0.020	"	"	"	"	"	U
Chrysene	ND		0.020	"	"	"	"	"	U
Dibenz (a,h) anthracene	ND		0.020	"	"	"	"	"	U
Fluoranthene	ND		0.020	"	"	"	"	"	U

Origins Laboratory, Inc.



The results in this report apply to the samples analyzed in accordance with the chain of custody document. This analytical report must be reproduced in its entirety.

Eagle Environmental Consulting, LLC
 8000 W 44th Ave
 Wheat Ridge CO 80033

Martin C Eckert III
 Project Number: -
 Project: Noble - Shable #14-25

WH-SS-02@7'

10/2/2023 10:36:00AM

Analyte	Result	Min Detection Limit	Reporting Limit	Units	Dilution	Batch	Prepared	Analyzed	Notes
---------	--------	---------------------	-----------------	-------	----------	-------	----------	----------	-------

Origins Laboratory, Inc.
Y310052-02 (Soil)

PAH by EPA 8270E

Fluorene	ND		0.020	mg/kg	1	B3J0325	10/03/2023	10/07/2023	U
Indeno (1,2,3-cd) pyrene	ND		0.020	"	"	"	"	"	U
Naphthalene	ND		0.002	"	"	"	"	"	U
Pyrene	ND		0.020	"	"	"	"	"	U

Surrogate: Fluorene-d10	94.8 %		60-130			"	"	"	
Surrogate: Anthracene-d10	102 %		60-130			"	"	"	
Surrogate: Pyrene-d10	92.9 %		60-130			"	"	"	
Surrogate: Benzo (a) pyrene-d12	96.3 %		60-130			"	"	"	

pH in Soil by 9045D

pH	8.26			pH Units	1	B3J0420	10/04/2023	10/05/2023	
----	------	--	--	----------	---	---------	------------	------------	--

SAR by 20B Saturated Paste

SAR	7.89		0.0100	SAR	1	B3J0410	10/04/2023	10/05/2023	
-----	------	--	--------	-----	---	---------	------------	------------	--

Specific Conductance Mod. 9050A

Specific Conductance (EC)	1.18		0.00500	mmhos/cm	1	B3J0420	10/04/2023	10/05/2023	
---------------------------	------	--	---------	----------	---	---------	------------	------------	--

Total Metals by 6020B

Origins Laboratory, Inc.



The results in this report apply to the samples analyzed in accordance with the chain of custody document. This analytical report must be reproduced in its entirety.

Eagle Environmental Consulting, LLC
 8000 W 44th Ave
 Wheat Ridge CO 80033

Martin C Eckert III
 Project Number: -
 Project: Noble - Shable #14-25

WH-SS-02@7'

10/2/2023 10:36:00AM

Analyte	Result	Min Detection Limit	Reporting Limit	Units	Dilution	Batch	Prepared	Analyzed	Notes
---------	--------	---------------------	-----------------	-------	----------	-------	----------	----------	-------

Waypoint Analytical, LLC.
Y310052-02 (Soil)

Total Metals by 6020B

Arsenic	2.47	0.0855	0.25	mg/Kg	5	L708881	10/05/2023	10/08/2023	
Barium	73	0.042	0.25	"	"	"	"	"	
Cadmium	ND	0.026	0.25	"	"	"	"	"	
Copper	9.32	0.0805	0.25	"	"	"	"	"	
Lead	37.9	0.031	0.25	"	"	"	"	"	
Nickel	7.84	0.0635	0.25	"	"	"	"	"	
Selenium	0.634	0.103	0.25	"	"	"	"	"	
Silver	ND	0.0067	0.25	"	"	"	"	"	
Zinc	35.8	0.535	2.5	"	"	"	"	"	

Total Metals by 7196A

Chromium, Hexavalent	ND	0.488	1	mg/Kg	2	L711246	10/02/2023	10/18/2023	
----------------------	----	-------	---	-------	---	---------	------------	------------	--

Origins Laboratory, Inc.



The results in this report apply to the samples analyzed in accordance with the chain of custody document. This analytical report must be reproduced in its entirety.

Eagle Environmental Consulting, LLC
 8000 W 44th Ave
 Wheat Ridge CO 80033

Martin C Eckert III
 Project Number: -
 Project: Noble - Shable #14-25

WH-SS-03@7'

10/2/2023 10:38:00AM

Analyte	Result	Min Detection Limit	Reporting Limit	Units	Dilution	Batch	Prepared	Analyzed	Notes
---------	--------	---------------------	-----------------	-------	----------	-------	----------	----------	-------

Origins Laboratory, Inc.
Y310052-03 (Soil)

Boron (DTPA Sorbitol)

Boron	0.885		0.0993	mg/L	1	B3J0513	10/05/2023	10/06/2023	
-------	-------	--	--------	------	---	---------	------------	------------	--

DRO/ORO by EPA 8015D

Diesel (C10-C28)	ND		25.0	mg/kg	1	B3J0302	10/03/2023	10/05/2023	U
Residual Range Organics (C28-C40)	ND		100	"	"	"	"	"	U

Surrogate: o-Terphenyl	73.1 %		50-150			"	"	"	
------------------------	--------	--	--------	--	--	---	---	---	--

GBTEX+TMBs by 8260D

1,2,4-Trimethylbenzene	ND		0.00200	mg/kg	1	B3J0423	10/04/2023	10/06/2023	U
1,3,5-Trimethylbenzene	ND		0.00200	"	"	"	"	"	U
Benzene	ND		0.00200	"	"	"	"	"	U
Ethylbenzene	ND		0.00200	"	"	"	"	"	U
Naphthalene	ND		0.00380	"	"	"	"	"	U
Toluene	ND		0.00200	"	"	"	"	"	U
Xylenes, total	ND		0.00200	"	"	"	"	"	U
Gasoline Range Hydrocarbons	ND		0.200	"	"	"	"	"	U

Origins Laboratory, Inc.



The results in this report apply to the samples analyzed in accordance with the chain of custody document. This analytical report must be reproduced in its entirety.

Eagle Environmental Consulting, LLC
 8000 W 44th Ave
 Wheat Ridge CO 80033

Martin C Eckert III
 Project Number: -
 Project: Noble - Shable #14-25

WH-SS-03@7'

10/2/2023 10:38:00AM

Analyte	Result	Min Detection Limit	Reporting Limit	Units	Dilution	Batch	Prepared	Analyzed	Notes
---------	--------	---------------------	-----------------	-------	----------	-------	----------	----------	-------

Origins Laboratory, Inc.
Y310052-03 (Soil)

GBTEX+TMBs by 8260D

Surrogate: 1,2-Dichloroethane-d4	113 %		70-130			B3J04 23	10/04/2023	10/06/2023	
Surrogate: Toluene-d8	99.0 %		70-130			"	"	"	
Surrogate: 4-Bromofluorobenzene	93.8 %		70-130			"	"	"	

Metals by Saturated Paste by EPA 6010

Calcium	1.57		0.499	meq/L	10	[CALC]	10/04/2023	10/05/2023	
Magnesium	ND		0.823	"	"	"	"	"	
Sodium	5.72		0.435	"	"	"	"	"	

PAH by EPA 8270E

1-Methylnaphthalene	ND		0.002	mg/kg	1	B3J0325	10/03/2023	10/07/2023	U
2-Methylnaphthalene	ND		0.002	"	"	"	"	"	U
Acenaphthene	ND		0.020	"	"	"	"	"	U
Anthracene	ND		0.020	"	"	"	"	"	U
Benzo (a) anthracene	ND		0.005	"	"	"	"	"	U
Benzo (a) pyrene	ND		0.020	"	"	"	"	"	U
Benzo (b) fluoranthene	ND		0.020	"	"	"	"	"	U
Benzo (k) fluoranthene	ND		0.020	"	"	"	"	"	U
Chrysene	ND		0.020	"	"	"	"	"	U
Dibenz (a,h) anthracene	ND		0.020	"	"	"	"	"	U

Origins Laboratory, Inc.



The results in this report apply to the samples analyzed in accordance with the chain of custody document. This analytical report must be reproduced in its entirety.

Eagle Environmental Consulting, LLC
 8000 W 44th Ave
 Wheat Ridge CO 80033

Martin C Eckert III
 Project Number: -
 Project: Noble - Shable #14-25

WH-SS-03@7'

10/2/2023 10:38:00AM

Analyte	Result	Min Detection Limit	Reporting Limit	Units	Dilution	Batch	Prepared	Analyzed	Notes
---------	--------	---------------------	-----------------	-------	----------	-------	----------	----------	-------

Origins Laboratory, Inc.
Y310052-03 (Soil)

PAH by EPA 8270E

Fluoranthene	ND		0.020	mg/kg	1	B3J0325	10/03/2023	10/07/2023	U
Fluorene	ND		0.020	"	"	"	"	"	U
Indeno (1,2,3-cd) pyrene	ND		0.020	"	"	"	"	"	U
Naphthalene	ND		0.002	"	"	"	"	"	U
Pyrene	ND		0.020	"	"	"	"	"	U

Surrogate: Fluorene-d10	92.5 %		60-130			"	"	"	
Surrogate: Anthracene-d10	105 %		60-130			"	"	"	
Surrogate: Pyrene-d10	99.0 %		60-130			"	"	"	
Surrogate: Benzo (a) pyrene-d12	101 %		60-130			"	"	"	

pH in Soil by 9045D

pH	8.26			pH Units	1	B3J0420	10/04/2023	10/05/2023	
----	------	--	--	----------	---	---------	------------	------------	--

SAR by 20B Saturated Paste

SAR	5.34		0.0100	SAR	1	B3J0410	10/04/2023	10/05/2023	
-----	------	--	--------	-----	---	---------	------------	------------	--

Specific Conductance Mod. 9050A

Specific Conductance (EC)	1.02		0.00500	mmhos/cm	1	B3J0420	10/04/2023	10/05/2023	
---------------------------	------	--	---------	----------	---	---------	------------	------------	--

Origins Laboratory, Inc.



The results in this report apply to the samples analyzed in accordance with the chain of custody document. This analytical report must be reproduced in its entirety.

Eagle Environmental Consulting, LLC
 8000 W 44th Ave
 Wheat Ridge CO 80033

Martin C Eckert III
 Project Number: -
 Project: Noble - Shable #14-25

WH-SS-03@7'

10/2/2023 10:38:00AM

Analyte	Result	Min Detection Limit	Reporting Limit	Units	Dilution	Batch	Prepared	Analyzed	Notes
---------	--------	---------------------	-----------------	-------	----------	-------	----------	----------	-------

Waypoint Analytical, LLC.
Y310052-03 (Soil)

Total Metals by 6020B

Arsenic	2.35	0.0855	0.25	mg/Kg	5	L708881	10/05/2023	10/08/2023	
Barium	77.4	0.042	0.25	"	"	"	"	"	
Cadmium	ND	0.026	0.25	"	"	"	"	"	
Copper	9.49	0.0805	0.25	"	"	"	"	"	
Lead	28.8	0.031	0.25	"	"	"	"	"	
Nickel	8.18	0.0635	0.25	"	"	"	"	"	
Selenium	0.686	0.103	0.25	"	"	"	"	"	
Silver	ND	0.0067	0.25	"	"	"	"	"	
Zinc	37	0.535	2.5	"	"	"	"	"	

Total Metals by 7196A

Chromium, Hexavalent	ND	0.246	0.506	mg/Kg	1	L711246	10/02/2023	10/18/2023	
----------------------	----	-------	-------	-------	---	---------	------------	------------	--

Origins Laboratory, Inc.



The results in this report apply to the samples analyzed in accordance with the chain of custody document. This analytical report must be reproduced in its entirety.

Eagle Environmental Consulting, LLC
 8000 W 44th Ave
 Wheat Ridge CO 80033

Martin C Eckert III
 Project Number: -
 Project: Noble - Shable #14-25

WH-SS-04@7'

10/2/2023 10:40:00AM

Analyte	Result	Min Detection Limit	Reporting Limit	Units	Dilution	Batch	Prepared	Analyzed	Notes
---------	--------	---------------------	-----------------	-------	----------	-------	----------	----------	-------

Origins Laboratory, Inc.
Y310052-04 (Soil)

Boron (DTPA Sorbitol)

Boron	0.592		0.0990	mg/L	1	B3J0513	10/05/2023	10/06/2023	
-------	-------	--	--------	------	---	---------	------------	------------	--

DRO/ORO by EPA 8015D

Diesel (C10-C28)	ND		25.0	mg/kg	1	B3J0302	10/03/2023	10/05/2023	U
Residual Range Organics (C28-C40)	ND		100	"	"	"	"	"	U

Surrogate: o-Terphenyl	69.6 %		50-150			"	"	"	
------------------------	--------	--	--------	--	--	---	---	---	--

GBTEX+TMBs by 8260D

1,2,4-Trimethylbenzene	ND		0.00200	mg/kg	1	B3J0423	10/04/2023	10/06/2023	U
1,3,5-Trimethylbenzene	ND		0.00200	"	"	"	"	"	U
Benzene	ND		0.00200	"	"	"	"	"	U
Ethylbenzene	ND		0.00200	"	"	"	"	"	U
Naphthalene	ND		0.00380	"	"	"	"	"	U
Toluene	ND		0.00200	"	"	"	"	"	U
Xylenes, total	ND		0.00200	"	"	"	"	"	U
Gasoline Range Hydrocarbons	0.382		0.200	"	"	"	"	"	

Origins Laboratory, Inc.



The results in this report apply to the samples analyzed in accordance with the chain of custody document. This analytical report must be reproduced in its entirety.

Eagle Environmental Consulting, LLC
 8000 W 44th Ave
 Wheat Ridge CO 80033

Martin C Eckert III
 Project Number: -
 Project: Noble - Shable #14-25

WH-SS-04@7'

10/2/2023 10:40:00AM

Analyte	Result	Min Detection Limit	Reporting Limit	Units	Dilution	Batch	Prepared	Analyzed	Notes
---------	--------	---------------------	-----------------	-------	----------	-------	----------	----------	-------

Origins Laboratory, Inc.
Y310052-04 (Soil)

GBTEX+TMBs by 8260D

Surrogate: 1,2-Dichloroethane-d4	111 %		70-130			B3J04 23	10/04/2023	10/06/2023	
Surrogate: Toluene-d8	98.3 %		70-130			"	"	"	
Surrogate: 4-Bromofluorobenzene	93.4 %		70-130			"	"	"	

Metals by Saturated Paste by EPA 6010

Calcium	2.09		0.499	meq/L	10	[CALC]	10/04/2023	10/05/2023	
Magnesium	1.11		0.823	"	"	"	"	"	
Sodium	6.46		0.435	"	"	"	"	"	

PAH by EPA 8270E

1-Methylnaphthalene	0.015		0.002	mg/kg	1	B3J0325	10/03/2023	10/07/2023	
2-Methylnaphthalene	0.013		0.002	"	"	"	"	"	
Acenaphthene	ND		0.020	"	"	"	"	"	U
Anthracene	ND		0.020	"	"	"	"	"	U
Benzo (a) anthracene	ND		0.005	"	"	"	"	"	U
Benzo (a) pyrene	ND		0.020	"	"	"	"	"	U
Benzo (b) fluoranthene	ND		0.020	"	"	"	"	"	U
Benzo (k) fluoranthene	ND		0.020	"	"	"	"	"	U
Chrysene	ND		0.020	"	"	"	"	"	U
Dibenz (a,h) anthracene	ND		0.020	"	"	"	"	"	U
Fluoranthene	ND		0.020	"	"	"	"	"	U

Origins Laboratory, Inc.



The results in this report apply to the samples analyzed in accordance with the chain of custody document. This analytical report must be reproduced in its entirety.

Eagle Environmental Consulting, LLC
 8000 W 44th Ave
 Wheat Ridge CO 80033

Martin C Eckert III
 Project Number: -
 Project: Noble - Shable #14-25

WH-SS-04@7'

10/2/2023 10:40:00AM

Analyte	Result	Min Detection Limit	Reporting Limit	Units	Dilution	Batch	Prepared	Analyzed	Notes
---------	--------	---------------------	-----------------	-------	----------	-------	----------	----------	-------

Origins Laboratory, Inc.
Y310052-04 (Soil)

PAH by EPA 8270E

Fluorene	ND		0.020	mg/kg	1	B3J0325	10/03/2023	10/07/2023	U
Indeno (1,2,3-cd) pyrene	ND		0.020	"	"	"	"	"	U
Naphthalene	ND		0.002	"	"	"	"	"	U
Pyrene	ND		0.020	"	"	"	"	"	U

Surrogate: Fluorene-d10	96.1 %		60-130			"	"	"	
Surrogate: Anthracene-d10	99.4 %		60-130			"	"	"	
Surrogate: Pyrene-d10	92.9 %		60-130			"	"	"	
Surrogate: Benzo (a) pyrene-d12	98.3 %		60-130			"	"	"	

pH in Soil by 9045D

pH	8.28			pH Units	1	B3J0420	10/04/2023	10/05/2023	
----	------	--	--	----------	---	---------	------------	------------	--

SAR by 20B Saturated Paste

SAR	5.11		0.0100	SAR	1	B3J0410	10/04/2023	10/05/2023	
-----	------	--	--------	-----	---	---------	------------	------------	--

Specific Conductance Mod. 9050A

Specific Conductance (EC)	1.07		0.00500	mmhos/cm	1	B3J0420	10/04/2023	10/05/2023	
---------------------------	------	--	---------	----------	---	---------	------------	------------	--

Total Metals by 6020B

Origins Laboratory, Inc.



The results in this report apply to the samples analyzed in accordance with the chain of custody document. This analytical report must be reproduced in its entirety.

Eagle Environmental Consulting, LLC
 8000 W 44th Ave
 Wheat Ridge CO 80033

Martin C Eckert III
 Project Number: -
 Project: Noble - Shable #14-25

WH-SS-04@7'

10/2/2023 10:40:00AM

Analyte	Result	Min Detection Limit	Reporting Limit	Units	Dilution	Batch	Prepared	Analyzed	Notes
---------	--------	---------------------	-----------------	-------	----------	-------	----------	----------	-------

Waypoint Analytical, LLC.
Y310052-04 (Soil)

Total Metals by 6020B

Arsenic	2.37	0.0855	0.25	mg/Kg	5	L708881	10/05/2023	10/08/2023	
Barium	90	0.042	0.25	"	"	"	"	"	
Cadmium	ND	0.026	0.25	"	"	"	"	"	
Copper	9.26	0.0805	0.25	"	"	"	"	"	
Lead	52.9	0.031	0.25	"	"	"	"	"	
Nickel	7.63	0.0635	0.25	"	"	"	"	"	
Selenium	0.577	0.103	0.25	"	"	"	"	"	
Silver	ND	0.0067	0.25	"	"	"	"	"	
Zinc	30.4	0.535	2.5	"	"	"	"	"	

Total Metals by 7196A

Chromium, Hexavalent	ND	0.244	0.5	mg/Kg	1	L711246	10/02/2023	10/18/2023	
----------------------	----	-------	-----	-------	---	---------	------------	------------	--

Origins Laboratory, Inc.



The results in this report apply to the samples analyzed in accordance with the chain of custody document. This analytical report must be reproduced in its entirety.

Eagle Environmental Consulting, LLC
 8000 W 44th Ave
 Wheat Ridge CO 80033

Martin C Eckert III
 Project Number: -
 Project: Noble - Shable #14-25

WH-FS-01@8'

10/2/2023 10:42:00AM

Analyte	Result	Min Detection Limit	Reporting Limit	Units	Dilution	Batch	Prepared	Analyzed	Notes
---------	--------	---------------------	-----------------	-------	----------	-------	----------	----------	-------

Origins Laboratory, Inc.
Y310052-05 (Soil)

Boron (DTPA Sorbitol)

Boron	1.02		0.0987	mg/L	1	B3J0513	10/05/2023	10/06/2023	
-------	------	--	--------	------	---	---------	------------	------------	--

DRO/ORO by EPA 8015D

Diesel (C10-C28)	ND		25.0	mg/kg	1	B3J0302	10/03/2023	10/05/2023	U
Residual Range Organics (C28-C40)	ND		100	"	"	"	"	"	U

Surrogate: o-Terphenyl	76.3 %		50-150			"	"	"	
------------------------	--------	--	--------	--	--	---	---	---	--

GBTEX+TMBs by 8260D

1,2,4-Trimethylbenzene	ND		0.00200	mg/kg	1	B3J0423	10/04/2023	10/06/2023	U
1,3,5-Trimethylbenzene	ND		0.00200	"	"	"	"	"	U
Benzene	ND		0.00200	"	"	"	"	"	U
Ethylbenzene	ND		0.00200	"	"	"	"	"	U
Naphthalene	ND		0.00380	"	"	"	"	"	U
Toluene	ND		0.00200	"	"	"	"	"	U
Xylenes, total	ND		0.00200	"	"	"	"	"	U
Gasoline Range Hydrocarbons	ND		0.200	"	"	"	"	"	U

Origins Laboratory, Inc.



The results in this report apply to the samples analyzed in accordance with the chain of custody document. This analytical report must be reproduced in its entirety.

Eagle Environmental Consulting, LLC
 8000 W 44th Ave
 Wheat Ridge CO 80033

Martin C Eckert III
 Project Number: -
 Project: Noble - Shable #14-25

WH-FS-01@8'

10/2/2023 10:42:00AM

Analyte	Result	Min Detection Limit	Reporting Limit	Units	Dilution	Batch	Prepared	Analyzed	Notes
---------	--------	---------------------	-----------------	-------	----------	-------	----------	----------	-------

Origins Laboratory, Inc.
Y310052-05 (Soil)

GBTEX+TMBs by 8260D

Surrogate: 1,2-Dichloroethane-d4	112 %		70-130			B3J04 23	10/04/2023	10/06/2023	
Surrogate: Toluene-d8	98.0 %		70-130			"	"	"	
Surrogate: 4-Bromofluorobenzene	92.8 %		70-130			"	"	"	

Metals by Saturated Paste by EPA 6010

Calcium	10.5		0.499	meq/L	10	[CALC]	10/04/2023	10/05/2023	
Magnesium	6.13		0.823	"	"	"	"	"	
Sodium	15.7		0.435	"	"	"	"	"	

PAH by EPA 8270E

1-Methylnaphthalene	ND		0.002	mg/kg	1	B3J0325	10/03/2023	10/07/2023	U
2-Methylnaphthalene	ND		0.002	"	"	"	"	"	U
Acenaphthene	ND		0.020	"	"	"	"	"	U
Anthracene	ND		0.020	"	"	"	"	"	U
Benzo (a) anthracene	ND		0.005	"	"	"	"	"	U
Benzo (a) pyrene	ND		0.020	"	"	"	"	"	U
Benzo (b) fluoranthene	ND		0.020	"	"	"	"	"	U
Benzo (k) fluoranthene	ND		0.020	"	"	"	"	"	U
Chrysene	ND		0.020	"	"	"	"	"	U
Dibenz (a,h) anthracene	ND		0.020	"	"	"	"	"	U

Origins Laboratory, Inc.



The results in this report apply to the samples analyzed in accordance with the chain of custody document. This analytical report must be reproduced in its entirety.

Eagle Environmental Consulting, LLC
 8000 W 44th Ave
 Wheat Ridge CO 80033

Martin C Eckert III
 Project Number: -
 Project: Noble - Shable #14-25

WH-FS-01@8'

10/2/2023 10:42:00AM

Analyte	Result	Min Detection Limit	Reporting Limit	Units	Dilution	Batch	Prepared	Analyzed	Notes
---------	--------	---------------------	-----------------	-------	----------	-------	----------	----------	-------

Origins Laboratory, Inc.
Y310052-05 (Soil)

PAH by EPA 8270E

Fluoranthene	ND		0.020	mg/kg	1	B3J0325	10/03/2023	10/07/2023	U
Fluorene	ND		0.020	"	"	"	"	"	U
Indeno (1,2,3-cd) pyrene	ND		0.020	"	"	"	"	"	U
Naphthalene	ND		0.002	"	"	"	"	"	U
Pyrene	ND		0.020	"	"	"	"	"	U

Surrogate: Fluorene-d10	93.7 %		60-130			"	"	"	
Surrogate: Anthracene-d10	96.4 %		60-130			"	"	"	
Surrogate: Pyrene-d10	97.6 %		60-130			"	"	"	
Surrogate: Benzo (a) pyrene-d12	98.1 %		60-130			"	"	"	

pH in Soil by 9045D

pH	8.09			pH Units	1	B3J0420	10/04/2023	10/05/2023	
----	------	--	--	----------	---	---------	------------	------------	--

SAR by 20B Saturated Paste

SAR	5.44		0.0100	SAR	1	B3J0410	10/04/2023	10/05/2023	
-----	------	--	--------	-----	---	---------	------------	------------	--

Specific Conductance Mod. 9050A

Specific Conductance (EC)	3.30		0.00500	mmhos/cm	1	B3J0420	10/04/2023	10/05/2023	
---------------------------	------	--	---------	----------	---	---------	------------	------------	--

Origins Laboratory, Inc.



The results in this report apply to the samples analyzed in accordance with the chain of custody document. This analytical report must be reproduced in its entirety.

Eagle Environmental Consulting, LLC
 8000 W 44th Ave
 Wheat Ridge CO 80033

Martin C Eckert III
 Project Number: -
 Project: Noble - Shable #14-25

WH-FS-01@8'

10/2/2023 10:42:00AM

Analyte	Result	Min Detection Limit	Reporting Limit	Units	Dilution	Batch	Prepared	Analyzed	Notes
---------	--------	---------------------	-----------------	-------	----------	-------	----------	----------	-------

Waypoint Analytical, LLC.
Y310052-05 (Soil)

Total Metals by 6020B

Arsenic	2.61	0.0855	0.25	mg/Kg	5	L708881	10/05/2023	10/08/2023	
Barium	101	0.042	0.25	"	"	"	"	"	
Cadmium	ND	0.026	0.25	"	"	"	"	"	
Copper	9.6	0.0805	0.25	"	"	"	"	"	
Lead	16.4	0.031	0.25	"	"	"	"	"	
Nickel	9.18	0.0635	0.25	"	"	"	"	"	
Selenium	0.796	0.103	0.25	"	"	"	"	"	
Silver	ND	0.0067	0.25	"	"	"	"	"	
Zinc	42.3	0.535	2.5	"	"	"	"	"	

Total Metals by 7196A

Chromium, Hexavalent	ND	0.244	0.5	mg/Kg	1	L711246	10/02/2023	10/18/2023	
----------------------	----	-------	-----	-------	---	---------	------------	------------	--

Origins Laboratory, Inc.



The results in this report apply to the samples analyzed in accordance with the chain of custody document. This analytical report must be reproduced in its entirety.

Eagle Environmental Consulting, LLC
 8000 W 44th Ave
 Wheat Ridge CO 80033

Martin C Eckert III
 Project Number: -
 Project: Noble - Shable #14-25

Extractable Petroleum Hydrocarbons by 8015D - Quality Control
Origins Laboratory, Inc.

Analyte	Result	Reporting Limit	Units	Spike Level	Source Result	%REC	%REC Limits	RPD	RPD Limit	Notes
Batch B3J0302 - EPA 3550B										
Blank (B3J0302-BLK1)										
					Prepared: 10/03/2023 Analyzed: 10/05/2023					
Diesel (C10-C28)	ND	25.0	mg/kg							U
Residual Range Organics (C28-C40)	ND	100	"							U
Surrogate: o-Terphenyl	23		"	24.9		93.5	50-150			

Origins Laboratory, Inc.



The results in this report apply to the samples analyzed in accordance with the chain of custody document. This analytical report must be reproduced in its entirety.

Eagle Environmental Consulting, LLC
 8000 W 44th Ave
 Wheat Ridge CO 80033

Martin C Eckert III
 Project Number: -
 Project: Noble - Shable #14-25

Extractable Petroleum Hydrocarbons by 8015D - Quality Control
Origins Laboratory, Inc.

Analyte	Result	Reporting Limit	Units	Spike Level	Source Result	%REC	%REC Limits	RPD	RPD Limit	Notes
---------	--------	-----------------	-------	-------------	---------------	------	-------------	-----	-----------	-------

Batch B3J0302 - EPA 3550B

LCS (B3J0302-BS1)

Prepared: 10/03/2023 Analyzed: 10/05/2023

Diesel (C10-C28)	863	50.0	mg/kg	1000		86.3	70-130			
Residual Range Organics (C28-C40)	956	200	"	1000		95.6	70-130			
Surrogate: o-Terphenyl	41		"	49.8		81.5	50-150			

Origins Laboratory, Inc.



The results in this report apply to the samples analyzed in accordance with the chain of custody document. This analytical report must be reproduced in its entirety.

Eagle Environmental Consulting, LLC
 8000 W 44th Ave
 Wheat Ridge CO 80033

Martin C Eckert III
 Project Number: -
 Project: Noble - Shable #14-25

Extractable Petroleum Hydrocarbons by 8015D - Quality Control
Origins Laboratory, Inc.

Analyte	Result	Reporting Limit	Units	Spike Level	Source Result	%REC	%REC Limits	RPD	RPD Limit	Notes
---------	--------	-----------------	-------	-------------	---------------	------	-------------	-----	-----------	-------

Batch B3J0302 - EPA 3550B

Matrix Spike (B3J0302-MS1)	Source: Y310001-01			Prepared: 10/03/2023 Analyzed: 10/05/2023						
Diesel (C10-C28)	867	50.0	mg/kg	1000	ND	86.7	70-130			
Residual Range Organics (C28-C40)	978	200	"	1000	ND	97.8	70-130			
Surrogate: o-Terphenyl	38		"	49.8		77.4	50-150			

Origins Laboratory, Inc.



The results in this report apply to the samples analyzed in accordance with the chain of custody document. This analytical report must be reproduced in its entirety.

Eagle Environmental Consulting, LLC
 8000 W 44th Ave
 Wheat Ridge CO 80033

Martin C Eckert III
 Project Number: -
 Project: Noble - Shable #14-25

Extractable Petroleum Hydrocarbons by 8015D - Quality Control
Origins Laboratory, Inc.

Analyte	Result	Reporting Limit	Units	Spike Level	Source Result	%REC	%REC Limits	RPD	RPD Limit	Notes
---------	--------	-----------------	-------	-------------	---------------	------	-------------	-----	-----------	-------

Batch B3J0302 - EPA 3550B

Matrix Spike Dup (B3J0302-MSD1)	Source: Y310001-01			Prepared: 10/03/2023 Analyzed: 10/05/2023						
Diesel (C10-C28)	846	50.0	mg/kg	1000	ND	84.6	70-130	2.42	35	
Residual Range Organics (C28-C40)	937	200	"	1000	ND	93.7	70-130	4.31	35	
Surrogate: o-Terphenyl	36		"	49.8		72.1	50-150			

Origins Laboratory, Inc.



The results in this report apply to the samples analyzed in accordance with the chain of custody document. This analytical report must be reproduced in its entirety.

Eagle Environmental Consulting, LLC
 8000 W 44th Ave
 Wheat Ridge CO 80033

Martin C Eckert III
 Project Number: -
 Project: Noble - Shable #14-25

Extractable Petroleum Hydrocarbons by 8015D - Quality Control
Origins Laboratory, Inc.

Analyte	Result	Reporting Limit	Units	Spike Level	Source Result	%REC	%REC Limits	RPD	RPD Limit	Notes
---------	--------	-----------------	-------	-------------	---------------	------	-------------	-----	-----------	-------

Batch B3J0423 - EPA 5030 (soil)

Blank (B3J0423-BLK1)

Prepared: 10/04/2023 Analyzed: 10/06/2023

1,2,4-Trimethylbenzene	ND	0.00200	mg/kg							U
1,3,5-Trimethylbenzene	ND	0.00200	"							U
Benzene	ND	0.00200	"							U
Ethylbenzene	ND	0.00200	"							U
Naphthalene	ND	0.00380	"							U
Toluene	ND	0.00200	"							U
Xylenes, total	ND	0.00200	"							U
Gasoline Range Hydrocarbons	ND	0.200	"							U
Surrogate: 1,2-Dichloroethane-d4	0.13		"	0.125	107		70-130			
Surrogate: Toluene-d8	0.12		"	0.125	98.8		70-130			
Surrogate: 4-Bromofluorobenzene	0.12		"	0.125	92.4		70-130			

Origins Laboratory, Inc.



The results in this report apply to the samples analyzed in accordance with the chain of custody document. This analytical report must be reproduced in its entirety.

Eagle Environmental Consulting, LLC
 8000 W 44th Ave
 Wheat Ridge CO 80033

Martin C Eckert III
 Project Number: -
 Project: Noble - Shable #14-25

Volatile Organic Compounds by GC/MS SW846 8260D - Quality Control
Origins Laboratory, Inc.

Analyte	Result	Reporting Limit	Units	Spike Level	Source Result	%REC	%REC Limits	RPD	RPD Limit	Notes
---------	--------	-----------------	-------	-------------	---------------	------	-------------	-----	-----------	-------

Batch B3J0423 - EPA 5030 (soil)

LCS (B3J0423-BS1)

Prepared: 10/04/2023 Analyzed: 10/06/2023

1,2,4-Trimethylbenzene	0.0873	0.00200	mg/kg	0.100		87.3	70-130			
1,3,5-Trimethylbenzene	0.0881	0.00200	"	0.100		88.1	70-130			
Benzene	0.0815	0.00200	"	0.100		81.5	70-130			
Ethylbenzene	0.0822	0.00200	"	0.100		82.2	70-130			
Naphthalene	0.0872	0.00380	"	0.100		87.2	70-130			
Toluene	0.0842	0.00200	"	0.100		84.2	70-130			
o-Xylene	0.0923	0.00200	"	0.100		92.3	70-130			
m,p-Xylene	0.175	0.00400	"	0.200		87.3	70-130			
Surrogate: 1,2-Dichloroethane-d4	0.13		"	0.125		105	70-130			
Surrogate: Toluene-d8	0.13		"	0.125		101	70-130			
Surrogate: 4-Bromofluorobenzene	0.12		"	0.125		94.3	70-130			

Origins Laboratory, Inc.



The results in this report apply to the samples analyzed in accordance with the chain of custody document. This analytical report must be reproduced in its entirety.

Eagle Environmental Consulting, LLC
 8000 W 44th Ave
 Wheat Ridge CO 80033

Martin C Eckert III
 Project Number: -
 Project: Noble - Shable #14-25

Volatile Organic Compounds by GC/MS SW846 8260D - Quality Control
Origins Laboratory, Inc.

Analyte	Result	Reporting Limit	Units	Spike Level	Source Result	%REC	%REC Limits	RPD	RPD Limit	Notes
---------	--------	-----------------	-------	-------------	---------------	------	-------------	-----	-----------	-------

Batch B3J0423 - EPA 5030 (soil)

Matrix Spike (B3J0423-MS1)	Source: Y310028-03			Prepared: 10/04/2023 Analyzed: 10/06/2023						
1,2,4-Trimethylbenzene	0.0815	0.00200	mg/kg	0.100	ND	81.5	70-130			
1,3,5-Trimethylbenzene	0.0811	0.00200	"	0.100	ND	81.1	70-130			
Benzene	0.0797	0.00200	"	0.100	ND	79.7	70-130			
Ethylbenzene	0.0782	0.00200	"	0.100	ND	78.2	70-130			
Naphthalene	0.0789	0.00380	"	0.100	ND	78.9	70-130			
Toluene	0.0797	0.00200	"	0.100	ND	79.7	70-130			
o-Xylene	0.0874	0.00200	"	0.100	ND	87.4	70-130			
m,p-Xylene	0.166	0.00400	"	0.200	ND	83.1	70-130			
Surrogate: 1,2-Dichloroethane-d4	0.13		"	0.125		105	70-130			
Surrogate: Toluene-d8	0.12		"	0.125		98.5	70-130			
Surrogate: 4-Bromofluorobenzene	0.12		"	0.125		94.8	70-130			

Origins Laboratory, Inc.



The results in this report apply to the samples analyzed in accordance with the chain of custody document. This analytical report must be reproduced in its entirety.

Eagle Environmental Consulting, LLC
 8000 W 44th Ave
 Wheat Ridge CO 80033

Martin C Eckert III
 Project Number: -
 Project: Noble - Shable #14-25

Volatile Organic Compounds by GC/MS SW846 8260D - Quality Control
Origins Laboratory, Inc.

Analyte	Result	Reporting Limit	Units	Spike Level	Source Result	%REC	%REC Limits	RPD	RPD Limit	Notes
---------	--------	-----------------	-------	-------------	---------------	------	-------------	-----	-----------	-------

Batch B3J0423 - EPA 5030 (soil)

Matrix Spike Dup (B3J0423-MSD1)	Source: Y310028-03			Prepared: 10/04/2023 Analyzed: 10/06/2023						
1,2,4-Trimethylbenzene	0.0768	0.00200	mg/kg	0.100	ND	76.8	70-130	6.04	20	
1,3,5-Trimethylbenzene	0.0759	0.00200	"	0.100	ND	75.9	70-130	6.63	20	
Benzene	0.0788	0.00200	"	0.100	ND	78.8	70-130	1.16	20	
Ethylbenzene	0.0763	0.00200	"	0.100	ND	76.3	70-130	2.41	20	
Naphthalene	0.0713	0.00380	"	0.100	ND	71.3	70-130	10.2	20	
Toluene	0.0790	0.00200	"	0.100	ND	79.0	70-130	0.806	20	
o-Xylene	0.0858	0.00200	"	0.100	ND	85.8	70-130	1.85	20	
m,p-Xylene	0.162	0.00400	"	0.200	ND	80.9	70-130	2.67	20	
Surrogate: 1,2-Dichloroethane-d4	0.13		"	0.125		107	70-130			
Surrogate: Toluene-d8	0.12		"	0.125		99.0	70-130			
Surrogate: 4-Bromofluorobenzene	0.12		"	0.125		95.6	70-130			

Origins Laboratory, Inc.



The results in this report apply to the samples analyzed in accordance with the chain of custody document. This analytical report must be reproduced in its entirety.

Eagle Environmental Consulting, LLC
 8000 W 44th Ave
 Wheat Ridge CO 80033

Martin C Eckert III
 Project Number: -
 Project: Noble - Shable #14-25

Volatile Organic Compounds by GC/MS SW846 8260D - Quality Control
Origins Laboratory, Inc.

Analyte	Result	Reporting Limit	Units	Spike Level	Source Result	%REC	%REC Limits	RPD	RPD Limit	Notes
---------	--------	-----------------	-------	-------------	---------------	------	-------------	-----	-----------	-------

EPA 8270E (SW846) - Semivolatile Organic Compounds - Quality Control
Origins Laboratory, Inc.

Analyte	Result	Reporting Limit	Units	Spike Level	Source Result	%REC	%REC Limits	RPD	RPD Limit	Notes
---------	--------	-----------------	-------	-------------	---------------	------	-------------	-----	-----------	-------

Batch B3J0325 - EPA 3580

Blank (B3J0325-BLK1)

Prepared: 10/03/2023 Analyzed: 10/07/2023

1-Methylnaphthalene	ND	0.002	mg/kg							U
2-Methylnaphthalene	ND	0.002	"							U
Acenaphthene	ND	0.020	"							U
Anthracene	ND	0.020	"							U
Benzo (a) anthracene	ND	0.005	"							U
Benzo (a) pyrene	ND	0.020	"							U
Benzo (b) fluoranthene	ND	0.020	"							U
Benzo (g,h,i) perylene	ND	0.020	"							U
Benzo (k) fluoranthene	ND	0.020	"							U
Chrysene	ND	0.020	"							U
Dibenz (a,h) anthracene	ND	0.020	"							U
Fluoranthene	ND	0.020	"							U
Fluorene	ND	0.020	"							U
Indeno (1,2,3-cd) pyrene	ND	0.020	"							U
Naphthalene	ND	0.002	"							U
Phenanthrene	ND	0.020	"							U
Pyrene	ND	0.020	"							U
Surrogate: Fluorene-d10	190		ug/kg	200		93.3	60-130			
Surrogate: Anthracene-d10	210		"	200		103	60-130			
Surrogate: Pyrene-d10	240		"	200		120	60-130			
Surrogate: Benzo (a) pyrene-d12	190		"	200		96.6	60-130			

Origins Laboratory, Inc.



The results in this report apply to the samples analyzed in accordance with the chain of custody document. This analytical report must be reproduced in its entirety.

Eagle Environmental Consulting, LLC
 8000 W 44th Ave
 Wheat Ridge CO 80033

Martin C Eckert III
 Project Number: -
 Project: Noble - Shable #14-25

EPA 8270E (SW846) - Semivolatile Organic Compounds - Quality Control
Origins Laboratory, Inc.

Analyte	Result	Reporting Limit	Units	Spike Level	Source Result	%REC	%REC Limits	RPD	RPD Limit	Notes
---------	--------	-----------------	-------	-------------	---------------	------	-------------	-----	-----------	-------

Batch B3J0325 - EPA 3580

LCS (B3J0325-BS1)

Prepared: 10/03/2023 Analyzed: 10/07/2023

1-Methylnaphthalene	0.193	0.002	mg/kg	0.200		96.3	70-130			
2-Methylnaphthalene	0.187	0.002	"	0.200		93.4	70-130			
Acenaphthene	0.184	0.020	"	0.200		91.9	70-130			
Anthracene	0.162	0.020	"	0.200		80.8	70-130			
Benzo (a) anthracene	0.171	0.005	"	0.200		85.4	70-130			
Benzo (a) pyrene	0.198	0.020	"	0.200		98.8	70-130			
Benzo (b) fluoranthene	0.186	0.020	"	0.200		93.0	70-130			
Benzo (g,h,i) perylene	0.197	0.020	"	0.200		98.5	70-130			
Benzo (k) fluoranthene	0.202	0.020	"	0.200		101	70-130			
Chrysene	0.189	0.020	"	0.200		94.4	70-130			
Dibenz (a,h) anthracene	0.191	0.020	"	0.200		95.5	70-130			
Fluoranthene	0.151	0.020	"	0.200		75.6	70-130			
Fluorene	0.175	0.020	"	0.200		87.7	70-130			
Indeno (1,2,3-cd) pyrene	0.238	0.020	"	0.200		119	70-130			
Naphthalene	0.190	0.002	"	0.200		94.8	70-130			
Phenanthrene	0.187	0.020	"	0.200		93.5	70-130			
Pyrene	0.225	0.020	"	0.200		113	70-130			
Surrogate: Fluorene-d10	190		ug/kg	200		94.8	60-130			
Surrogate: Anthracene-d10	210		"	200		107	60-130			
Surrogate: Pyrene-d10	240		"	200		119	60-130			
Surrogate: Benzo (a) pyrene-d12	210		"	200		105	60-130			

Matrix Spike (B3J0325-MS1)

Source: Y310052-01

Prepared: 10/03/2023 Analyzed: 10/07/2023

1-Methylnaphthalene	0.195	0.002	mg/kg	0.200	0.001	96.7	70-130			
2-Methylnaphthalene	0.192	0.002	"	0.200	0.002	94.9	70-130			
Acenaphthene	0.189	0.020	"	0.200	ND	94.6	70-130			
Anthracene	0.172	0.020	"	0.200	0.0007	85.5	70-130			

Origins Laboratory, Inc.



The results in this report apply to the samples analyzed in accordance with the chain of custody document. This analytical report must be reproduced in its entirety.

Eagle Environmental Consulting, LLC
 8000 W 44th Ave
 Wheat Ridge CO 80033

Martin C Eckert III
 Project Number: -
 Project: Noble - Shable #14-25

EPA 8270E (SW846) - Semivolatile Organic Compounds - Quality Control
Origins Laboratory, Inc.

Analyte	Result	Reporting Limit	Units	Spike Level	Source Result	%REC	%REC Limits	RPD	RPD Limit	Notes
---------	--------	-----------------	-------	-------------	---------------	------	-------------	-----	-----------	-------

Batch B3J0325 - EPA 3580

Matrix Spike (B3J0325-MS1)	Source: Y310052-01			Prepared: 10/03/2023 Analyzed: 10/07/2023						
Benzo (a) anthracene	0.193	0.005	mg/kg	0.200	0.001	95.9	70-130			
Benzo (a) pyrene	0.199	0.020	"	0.200	ND	99.3	70-130			
Benzo (b) fluoranthene	0.193	0.020	"	0.200	ND	96.6	70-130			
Benzo (g,h,i) perylene	0.193	0.020	"	0.200	ND	96.7	70-130			
Benzo (k) fluoranthene	0.203	0.020	"	0.200	ND	101	70-130			
Chrysene	0.190	0.020	"	0.200	0.0007	94.8	70-130			
Dibenz (a,h) anthracene	0.196	0.020	"	0.200	ND	98.0	70-130			
Fluoranthene	0.179	0.020	"	0.200	ND	89.6	70-130			
Fluorene	0.182	0.020	"	0.200	ND	91.2	70-130			
Indeno (1,2,3-cd) pyrene	0.200	0.020	"	0.200	ND	100	70-130			
Naphthalene	0.192	0.002	"	0.200	ND	95.9	70-130			
Phenanthrene	0.189	0.020	"	0.200	0.003	93.3	70-130			
Pyrene	0.174	0.020	"	0.200	0.0005	87.0	70-130			
Surrogate: Fluorene-d10	190		ug/kg	200		95.3	60-130			
Surrogate: Anthracene-d10	200		"	200		98.4	60-130			
Surrogate: Pyrene-d10	180		"	200		90.5	60-130			
Surrogate: Benzo (a) pyrene-d12	210		"	200		104	60-130			

Matrix Spike Dup (B3J0325-MSD1)	Source: Y310052-01			Prepared: 10/03/2023 Analyzed: 10/07/2023						
1-Methylnaphthalene	0.191	0.002	mg/kg	0.200	0.001	94.6	70-130	2.21	20	
2-Methylnaphthalene	0.196	0.002	"	0.200	0.002	96.9	70-130	2.04	20	
Acenaphthene	0.188	0.020	"	0.200	ND	93.9	70-130	0.680	20	
Anthracene	0.185	0.020	"	0.200	0.0007	92.3	70-130	7.61	20	
Benzo (a) anthracene	0.162	0.005	"	0.200	0.001	80.5	70-130	17.4	20	
Benzo (a) pyrene	0.203	0.020	"	0.200	ND	102	70-130	2.37	20	
Benzo (b) fluoranthene	0.196	0.020	"	0.200	ND	97.8	70-130	1.26	20	
Benzo (g,h,i) perylene	0.197	0.020	"	0.200	ND	98.7	70-130	2.09	20	

Origins Laboratory, Inc.



The results in this report apply to the samples analyzed in accordance with the chain of custody document. This analytical report must be reproduced in its entirety.

Eagle Environmental Consulting, LLC
 8000 W 44th Ave
 Wheat Ridge CO 80033

Martin C Eckert III
 Project Number: -
 Project: Noble - Shable #14-25

EPA 8270E (SW846) - Semivolatile Organic Compounds - Quality Control
Origins Laboratory, Inc.

Analyte	Result	Reporting Limit	Units	Spike Level	Source Result	%REC	%REC Limits	RPD	RPD Limit	Notes
---------	--------	-----------------	-------	-------------	---------------	------	-------------	-----	-----------	-------

Batch B3J0325 - EPA 3580

Matrix Spike Dup (B3J0325-MSD1)	Source: Y310052-01			Prepared: 10/03/2023 Analyzed: 10/07/2023						
Benzo (k) fluoranthene	0.181	0.020	mg/kg	0.200	ND	90.3	70-130	11.6	20	
Chrysene	0.187	0.020	"	0.200	0.0007	93.3	70-130	1.58	20	
Dibenz (a,h) anthracene	0.200	0.020	"	0.200	ND	100	70-130	2.28	20	
Fluoranthene	0.163	0.020	"	0.200	ND	81.4	70-130	9.57	20	
Fluorene	0.180	0.020	"	0.200	ND	90.2	70-130	1.00	20	
Indeno (1,2,3-cd) pyrene	0.202	0.020	"	0.200	ND	101	70-130	0.851	20	
Naphthalene	0.196	0.002	"	0.200	ND	97.8	70-130	2.06	20	
Phenanthrene	0.184	0.020	"	0.200	0.003	90.6	70-130	2.92	20	
Pyrene	0.186	0.020	"	0.200	0.0005	92.8	70-130	6.48	20	
Surrogate: Fluorene-d10	190		ug/kg	200		94.4	60-130			
Surrogate: Anthracene-d10	200		"	200		101	60-130			
Surrogate: Pyrene-d10	190		"	200		94.6	60-130			
Surrogate: Benzo (a) pyrene-d12	200		"	200		99.8	60-130			

Origins Laboratory, Inc.



The results in this report apply to the samples analyzed in accordance with the chain of custody document. This analytical report must be reproduced in its entirety.

Eagle Environmental Consulting, LLC
 8000 W 44th Ave
 Wheat Ridge CO 80033

Martin C Eckert III
 Project Number: -
 Project: Noble - Shable #14-25

Classical Chemistry Parameters - Quality Control
Origins Laboratory, Inc.

Analyte	Result	Reporting Limit	Units	Spike Level	Source Result	%REC	%REC Limits	RPD	RPD Limit	Notes
---------	--------	-----------------	-------	-------------	---------------	------	-------------	-----	-----------	-------

Batch B3J0410 - Saturated Paste Metals

Blank (B3J0410-BLK1)

Prepared: 10/04/2023 Analyzed: 10/05/2023

Calcium PPM	ND	10.0	mg/L							
SAR	ND	0.0100	SAR							
Magnesium PPM	ND	10.0	mg/L							
Sodium PPM	ND	10.0	"							

Duplicate (B3J0410-DUP1)

Source: Y310028-03

Prepared: 10/04/2023 Analyzed: 10/05/2023

SAR	ND	0.0100	SAR		0.111				200	
Calcium PPM	59.0	10.0	mg/L		62.8			6.27	50	
Magnesium PPM	3.81	10.0	"		4.14			8.30	50	
Sodium PPM	3.37	10.0	"		3.37			0.00	50	

Batch B3J0513 - DTPA Sorbitol Preparation

Blank (B3J0513-BLK1)

Prepared: 10/05/2023 Analyzed: 10/06/2023

Boron	ND	0.100	mg/L							
-------	----	-------	------	--	--	--	--	--	--	--

Duplicate (B3J0513-DUP1)

Source: Y310028-02

Prepared: 10/05/2023 Analyzed: 10/06/2023

Boron	1.05	0.0988	mg/L		1.17			11.0	50	
-------	------	--------	------	--	------	--	--	------	----	--

Batch B3J0517 - Saturated Paste Metals

Blank (B3J0517-BLK1)

Prepared: 10/05/2023 Analyzed: 10/06/2023

SAR	ND	0.0100	SAR							
Calcium PPM	ND	10.0	mg/L							
Magnesium PPM	ND	10.0	"							
Sodium PPM	ND	10.0	"							

Origins Laboratory, Inc.



The results in this report apply to the samples analyzed in accordance with the chain of custody document. This analytical report must be reproduced in its entirety.

Eagle Environmental Consulting, LLC
 8000 W 44th Ave
 Wheat Ridge CO 80033

Martin C Eckert III
 Project Number: -
 Project: Noble - Shable #14-25

Classical Chemistry Parameters - Quality Control
Origins Laboratory, Inc.

Analyte	Result	Reporting Limit	Units	Spike Level	Source Result	%REC	%REC Limits	RPD	RPD Limit	Notes
---------	--------	-----------------	-------	-------------	---------------	------	-------------	-----	-----------	-------

Batch B3J0517 - Saturated Paste Metals

Duplicate (B3J0517-DUP1)	Source: Y310054-01			Prepared: 10/05/2023 Analyzed: 10/06/2023						
SAR	ND	0.0100	SAR		1.64					200
Calcium PPM	19.3	10.0	mg/L		20.3			5.14		50
Magnesium PPM	4.34	10.0	"		4.34			0.00		50
Sodium PPM	29.3	10.0	"		31.3			6.47		50

Origins Laboratory, Inc.



The results in this report apply to the samples analyzed in accordance with the chain of custody document. This analytical report must be reproduced in its entirety.

Eagle Environmental Consulting, LLC
 8000 W 44th Ave
 Wheat Ridge CO 80033

Martin C Eckert III
 Project Number: -
 Project: Noble - Shable #14-25

Saturated Paste - Quality Control
Origins Laboratory, Inc.

Analyte	Result	Reporting Limit	Units	Spike Level	Source Result	%REC	%REC Limits	RPD	RPD Limit	Notes
---------	--------	-----------------	-------	-------------	---------------	------	-------------	-----	-----------	-------

Batch B3J0420 - Saturated Paste pH/EC

Blank (B3J0420-BLK1)

Prepared: 10/04/2023 Analyzed: 10/05/2023

Specific Conductance (EC) ND 0.00500 mmhos/cm

Duplicate (B3J0420-DUP1)

Source: Y310028-03

Prepared: 10/04/2023 Analyzed: 10/05/2023

Specific Conductance (EC)	0.388	0.00500	mmhos/cm		0.405			4.19	25	
pH	7.99		pH Units		7.92			0.880	25	

Batch B3J0521 - Saturated Paste pH/EC

Blank (B3J0521-BLK1)

Prepared: 10/05/2023 Analyzed: 10/06/2023

Specific Conductance (EC) ND 0.00500 mmhos/cm

Duplicate (B3J0521-DUP1)

Source: Y310054-01

Prepared: 10/05/2023 Analyzed: 10/06/2023

pH	8.14		pH Units		8.14			0.00	25	
Specific Conductance (EC)	0.286	0.00500	mmhos/cm		0.351			20.5	25	

Origins Laboratory, Inc.



The results in this report apply to the samples analyzed in accordance with the chain of custody document. This analytical report must be reproduced in its entirety.

Eagle Environmental Consulting, LLC
 8000 W 44th Ave
 Wheat Ridge CO 80033

Martin C Eckert III
 Project Number: -
 Project: Noble - Shable #14-25

Total Metals by 6020B - Quality Control
Waypoint Analytical, LLC.

Analyte	Result	Reporting Limit	Units	Spike Level	Source Result	%REC	%REC Limits	RPD	RPD Limit	Notes
---------	--------	-----------------	-------	-------------	---------------	------	-------------	-----	-----------	-------

Batch L708881 - 3050B

MSD (L 98141-MSD-L708881)	Source: 98141			Prepared: 10/05/2023 Analyzed: 10/08/2023						
Lead	11.7	0.25	mg/Kg	2.33	10.4	56	75-125	12	80	*
Silver	0.241	0.25	"	0.466	0.0479	41	75-125	50.5	80	*
Zinc	58.1	2.5	"	23.3	42.2	68	75-125	1.9	80	*
Selenium	4.42	0.25	"	4.66	0.691	80	75-125	5.1	80	
Nickel	6.7	0.25	"	2.33	10.3	0	75-125	91	80	*
Cadmium	0.352	0.25	"	0.466	0.204	32	75-125	61.4	80	*
Barium	182	0.25	"	4.66	75.1	NR	75-125	40.2	80	I*
Arsenic	5.32	0.25	"	2.33	3.67	71	75-125	55.3	80	*
Copper	10.9	0.25	"	2.33	9.87	44	75-125	32.9	80	*

MS (L 98141-MS-L708881)	Source: 98141			Prepared: 10/05/2023 Analyzed: 10/10/2023						
Cadmium	0.664	0.25	mg/Kg	0.46	0.204	100	75-125			
Zinc	57	2.5	"	23	42.2	64	75-125			*
Silver	0.404	0.25	"	0.46	0.0479	77	75-125			
Selenium	4.2	0.25	"	4.6	0.691	76	75-125			
Nickel	17.9	0.25	"	2.3	10.3	330	75-125			*
Arsenic	9.39	0.25	"	2.3	3.67	248	75-125			*
Copper	15.2	0.25	"	2.3	9.87	232	75-125			*
Barium	121	0.25	"	4.6	75.1	997	75-125			I*
Lead	13.2	0.25	"	2.3	10.4	122	75-125			

LCS (LCS-L708881)				Prepared: 10/05/2023 Analyzed: 10/08/2023						
Arsenic	2.41	0.25	mg/Kg	2.5		96	80-120			
Selenium	4.83	0.25	"	5		97	80-120			
Silver	0.523	0.25	"	0.5		105	80-120			
Nickel	2.54	0.25	"	2.5		102	80-120			
Zinc	24.7	2.5	"	25		99	80-120			

Origins Laboratory, Inc.



The results in this report apply to the samples analyzed in accordance with the chain of custody document. This analytical report must be reproduced in its entirety.

Eagle Environmental Consulting, LLC
 8000 W 44th Ave
 Wheat Ridge CO 80033

Martin C Eckert III
 Project Number: -
 Project: Noble - Shable #14-25

Total Metals by 6020B - Quality Control
Waypoint Analytical, LLC.

Analyte	Result	Reporting Limit	Units	Spike Level	Source Result	%REC	%REC Limits	RPD	RPD Limit	Notes
---------	--------	-----------------	-------	-------------	---------------	------	-------------	-----	-----------	-------

Batch L708881 - 3050B

LCS (LCS-L708881)

Prepared: 10/05/2023 Analyzed: 10/08/2023

Lead	2.53	0.25	mg/Kg	2.5		101	80-120			
Barium	5.05	0.25	"	5		101	80-120			
Copper	2.6	0.25	"	2.5		104	80-120			
Cadmium	0.503	0.25	"	0.5		101	80-120			

LRB (LRB-L708881)

Prepared: 10/05/2023 Analyzed: 10/08/2023

Arsenic	ND	0.25	mg/Kg				-			
Silver	ND	0.25	"				-			
Selenium	ND	0.25	"				-			
Nickel	ND	0.25	"				-			
Lead	ND	0.25	"				-			
Copper	ND	0.25	"				-			
Barium	ND	0.25	"				-			
Zinc	ND	2.5	"				-			
Cadmium	ND	0.25	"				-			

Origins Laboratory, Inc.



The results in this report apply to the samples analyzed in accordance with the chain of custody document. This analytical report must be reproduced in its entirety.

Eagle Environmental Consulting, LLC
 8000 W 44th Ave
 Wheat Ridge CO 80033

Martin C Eckert III
 Project Number: -
 Project: Noble - Shable #14-25

Total Metals by 7196A - Quality Control
Waypoint Analytical, LLC.

Analyte	Result	Reporting Limit	Units	Spike Level	Source Result	%REC	%REC Limits	RPD	RPD Limit	Notes
Batch L711246 -										
DUP (L 98116-DUP)		Source: Y310052-01			Prepared: Analyzed: 10/18/2023					
Chromium, Hexavalent	ND	0.5	mg/Kg		98116		-	0	20	
MS (L 98116-MS)		Source: Y310052-01			Prepared: Analyzed: 10/18/2023					
Chromium, Hexavalent	33.2	2.5	mg/Kg	40	98116	83	75-125			
LCS (LCS)					Prepared: Analyzed: 10/18/2023					
Chromium, Hexavalent	6.58	0.5	mg/Kg	8		82	75-125			
LRB (LRB)					Prepared: Analyzed: 10/18/2023					
Chromium, Hexavalent	ND	0.5	mg/Kg				-			

Origins Laboratory, Inc.



The results in this report apply to the samples analyzed in accordance with the chain of custody document. This analytical report must be reproduced in its entirety.

Eagle Environmental Consulting, LLC
8000 W 44th Ave
Wheat Ridge CO 80033

Martin C Eckert III
Project Number: -
Project: Noble - Shable #14-25

Notes and Definitions

U Sample is Non-Detect.

I* [Undefined]

* QC Failure

ND Analyte NOT DETECTED at or above the reporting limit

RPD Relative Percent Difference

All soil results are reported on a wet weight basis.

Calculated results may use J-flag data (instead of reported "ND") as part of calculation to provide a more accurate result.

Origins Laboratory, Inc.



The results in this report apply to the samples analyzed in accordance with the chain of custody document. This analytical report must be reproduced in its entirety.



November 08, 2023

Eagle Environmental Consulting, LLC

Andrew Newberry

8000 W 44th Ave

Wheat Ridge CO 80033

Project Name - Noble - Shable #14-25

Project Number - -

Attached are your analytical results for Noble - Shable #14-25 received by Origins Laboratory, Inc. October 26, 2023. This project is associated with Origins project number Y310704-01.

The analytical results in the following report were analyzed under the guidelines of EPA Methods. These methods are identified as follows; "SW" are defined in SW-846, "EPA" are defined in 40CFR part 136 and "SM" are defined in the most current revision of Standard Methods For the Examination of Water and Wastewater.

The analytical results apply specifically to the samples and analyses specified per the attached Chain of Custody. As such, this report shall not be reproduced except in full, without the written approval of Origin's laboratory.

Unless otherwise noted, the analytical results for all soil samples are reported on a wet weight basis. All analytical analyses were performed under NELAP guidelines unless noted by a data qualifier.

Any holding time exceedances, deviations from the method specifications or deviations from Origins Laboratory's Standard Operating Procedures are outlined in the case narrative.

Thank you for selecting Origins for your analytical needs. Please contact us with any questions concerning this report, or if we can help with anything at all.

Origins Laboratory, Inc.
303.433.1322
o-squad@oelabinc.com



1725 Elk Place, Denver, CO 80211 | Phone: 303.433.1322 | Fax: 303.265.9645

Eagle Environmental Consulting, LLC
8000 W 44th Ave
Wheat Ridge CO 80033

Andrew Newberry
Project Number: -
Project: Noble - Shable #14-25

CROSS REFERENCE REPORT

Sample ID	Laboratory ID	Matrix	Date Sampled	Date Received
Background-01@2'	Y310704-01	Soil	October 2, 2023 10:44	10/26/2023 10:10

Origins Laboratory, Inc.



The results in this report apply to the samples analyzed in accordance with the chain of custody document. This analytical report must be reproduced in its entirety.

Eagle Environmental Consulting, LLC
 8000 W 44th Ave
 Wheat Ridge CO 80033

Andrew Newberry
 Project Number: -
 Project: Noble - Shable #14-25

Origins Laboratory

F-012207-01-R1
 Effective Date: 01/09/12

Sample Receipt Checklist

Origins Work Order: 4310704

Client: Eagle
 Client Project ID: shable #1425

Checklist Completed by: ETH

Shipped Via: HO
 (UPS, FedEx, Hand Delivered, Pick-up, etc.)

Date/time completed: 10/26/23

Airbill #: N/A

Matrix(s) Received: (Check all that apply): Soil/Solid Water Other: _____


Cooler Number/Temperature: 1110 °c / _____ °c / _____ °c (Describe) _____ °c

Thermometer ID: 7004

Requirement Description	Yes	No	N/A	Comments (if any)
If samples require cooling, was the temperature between 0°C to ≤ 6°C ⁽¹⁾ ?	/			
Is there ice present (document if blue ice is used)	/			
Are custody seals present on cooler? (if so, document in comments if they are signed and dated, broken or intact)		/		
Are custody seals present on each sample container? (if so, document in comments if they are signed and dated, broken or intact)		/		
Were all samples received intact ⁽¹⁾ ?	/			
Was adequate sample volume provided ⁽¹⁾ ?	/			
Are short holding time analytes or samples with HTs due within 48 hours present ⁽¹⁾ ?		/		
Is a chain-of-custody (COC) present and filled out completely ⁽¹⁾ ?	/			
Does the COC agree with the number and type of sample bottles received ⁽¹⁾ ?	/			
Do the sample IDs on the bottle labels match the COC ⁽¹⁾ ?	/			
Is the COC properly relinquished by the client with date and time recorded ⁽¹⁾ ?	/			
For volatiles in water – is there headspace (> ¼ inch bubble) present? If yes, contact client and note in narrative.			/	
Are samples preserved that require preservation and was it checked ⁽¹⁾ ? (note ID of confirmation instrument used in comments) / (preservation is not confirmed for subcontracted analyses in order to insure sample integrity)/(pH <2 for samples preserved with HNO ₃ , HCL, H ₂ SO ₄) / (pH >10 for samples preserved with NaAsO ₂ +NaOH, ZnAc+NaOH)			/	
Additional Comments (if any):				

⁽¹⁾If NO, then contact the client before proceeding with analysis and note date/time and person contacted as well as the corrective action to in the additional comments (above) and the case narrative.

Reviewed by (Project Manager) [Signature] Date/Time Reviewed 10/27/23

Origins Laboratory, Inc.


The results in this report apply to the samples analyzed in accordance with the chain of custody document. This analytical report must be reproduced in its entirety.

Eagle Environmental Consulting, LLC
 8000 W 44th Ave
 Wheat Ridge CO 80033

Andrew Newberry
 Project Number: -
 Project: Noble - Shable #14-25

Background-01@2'
10/2/2023 10:44:00AM

Analyte	Result	Reporting Limit	Units	Dilution	Batch	Analyst	Prepared	Analyzed	Notes
---------	--------	-----------------	-------	----------	-------	---------	----------	----------	-------

Origins Laboratory, Inc.
Y310704-01 (Soil)

Metals by Saturated Paste by EPA 6010

Calcium	18.2	0.499	meq/L	10	[CALC]	KAP	10/30/2023	11/01/2023
Magnesium	4.03	0.823	"	"	"	KAP	"	"
Sodium	21.7	0.435	"	"	"	KAP	"	"

pH in Soil by 9045D

pH	7.92		pH Units	1	B3J3015	HJD	10/30/2023	11/01/2023
----	------	--	----------	---	---------	-----	------------	------------

SAR by 20B Saturated Paste

SAR	6.51	0.0100	SAR	1	B3J3009	KAP	10/30/2023	11/01/2023
-----	------	--------	-----	---	---------	-----	------------	------------

Table 915 metals by EPA 6020B

Arsenic	4.04	0.0919	mg/kg	10	B3J2628	CIH	10/26/2023	10/27/2023
Barium	306	9.19	"	"	"	CIH	"	"
Lead	1060	9.19	"	"	"	CIH	"	"
Selenium	0.612	0.0919	"	"	"	CIH	"	"

Origins Laboratory, Inc.



The results in this report apply to the samples analyzed in accordance with the chain of custody document. This analytical report must be reproduced in its entirety.

Eagle Environmental Consulting, LLC
 8000 W 44th Ave
 Wheat Ridge CO 80033

Andrew Newberry
 Project Number: -
 Project: Noble - Shable #14-25

Metals by EPA 6000/7000 Series Methods - Quality Control
Origins Laboratory, Inc.

Analyte	Result	Reporting Limit	Units	Spike Level	Source Result	%REC	%REC Limits	RPD	RPD Limit	Notes
---------	--------	-----------------	-------	-------------	---------------	------	-------------	-----	-----------	-------

Batch B3J2628 - EPA 3050B

Blank (B3J2628-BLK1)

Prepared: 10/26/2023 Analyzed: 10/30/2023

Arsenic	ND	0.000100	mg/kg							
Barium	ND	0.0100	"							
Cadmium	ND	0.000100	"							
Copper	ND	0.0100	"							
Lead	ND	0.0100	"							
Nickel	ND	0.0100	"							
Selenium	ND	0.000100	"							
Silver	ND	0.000100	"							
Zinc	ND	0.100	"							

LCS (B3J2628-BS1)

Prepared: 10/26/2023 Analyzed: 10/27/2023

Arsenic	0.0545	0.000100	mg/kg	0.0500		109	80-120			
Barium	5.07	0.0100	"	5.00		101	80-120			
Cadmium	0.0530	0.000100	"	0.0500		106	80-120			
Copper	0.503	0.0100	"	0.500		101	80-120			
Lead	0.0514	0.0100	"	0.0500		103	80-120			
Nickel	0.0491	0.0100	"	0.0500		98.2	80-120			
Selenium	0.0451	0.000100	"	0.0500		90.2	80-120			
Silver	0.0540	0.000100	"	0.0500		108	80-120			
Zinc	0.474	0.100	"	0.500		94.8	80-120			

Matrix Spike (B3J2628-MS1)

Source: Y310698-01

Prepared: 10/26/2023 Analyzed: 10/27/2023

Arsenic	10.4	0.0887	mg/kg	4.44	5.97	101	75-125			
Barium	673	8.87	"	444	263	92.3	75-125			
Cadmium	4.84	0.0887	"	4.44	0.251	103	75-125			
Copper	57.5	8.87	"	44.4	12.8	101	75-125			
Lead	16.0	8.87	"	4.44	11.7	96.5	75-125			

Origins Laboratory, Inc.



The results in this report apply to the samples analyzed in accordance with the chain of custody document. This analytical report must be reproduced in its entirety.

Eagle Environmental Consulting, LLC
 8000 W 44th Ave
 Wheat Ridge CO 80033

Andrew Newberry
 Project Number: -
 Project: Noble - Shable #14-25

Metals by EPA 6000/7000 Series Methods - Quality Control
Origins Laboratory, Inc.

Analyte	Result	Reporting Limit	Units	Spike Level	Source Result	%REC	%REC Limits	RPD	RPD Limit	Notes
---------	--------	-----------------	-------	-------------	---------------	------	-------------	-----	-----------	-------

Batch B3J2628 - EPA 3050B

Matrix Spike (B3J2628-MS1)

Source: Y310698-01

Prepared: 10/26/2023 Analyzed: 10/27/2023

Nickel	19.8	8.87	mg/kg	4.44	15.3	102	75-125			
Selenium	3.90	0.0887	"	4.44	0.150	84.4	75-125			
Silver	4.65	0.0887	"	4.44	0.0518	104	75-125			
Zinc	97.8	88.7	"	44.4	54.7	96.9	75-125			

Matrix Spike Dup (B3J2628-MSD1)

Source: Y310698-01

Prepared: 10/26/2023 Analyzed: 10/27/2023

Arsenic	10.6	0.0908	mg/kg	4.54	5.97	101	75-125	1.23	20	
Barium	674	9.08	"	454	263	90.5	75-125	0.227	20	
Cadmium	4.95	0.0908	"	4.54	0.251	104	75-125	2.33	20	
Copper	59.5	9.08	"	45.4	12.8	103	75-125	3.45	20	
Lead	16.5	9.08	"	4.54	11.7	106	75-125	3.39	20	
Nickel	20.5	9.08	"	4.54	15.3	113	75-125	3.12	20	
Selenium	3.95	0.0908	"	4.54	0.150	83.6	75-125	1.28	20	
Silver	4.76	0.0908	"	4.54	0.0518	104	75-125	2.30	20	
Zinc	102	90.8	"	45.4	54.7	104	75-125	4.32	20	

Origins Laboratory, Inc.



The results in this report apply to the samples analyzed in accordance with the chain of custody document. This analytical report must be reproduced in its entirety.

Eagle Environmental Consulting, LLC
 8000 W 44th Ave
 Wheat Ridge CO 80033

Andrew Newberry
 Project Number: -
 Project: Noble - Shable #14-25

Classical Chemistry Parameters - Quality Control
Origins Laboratory, Inc.

Analyte	Result	Reporting Limit	Units	Spike Level	Source Result	%REC	%REC Limits	RPD	RPD Limit	Notes
---------	--------	-----------------	-------	-------------	---------------	------	-------------	-----	-----------	-------

Batch B3J3009 - Saturated Paste Metals

Blank (B3J3009-BLK1)

Prepared: 10/30/2023 Analyzed: 11/01/2023

Calcium PPM	ND	10.0	mg/L							
SAR	ND	0.0100	SAR							
Magnesium PPM	ND	10.0	mg/L							
Sodium PPM	ND	10.0	"							

Duplicate (B3J3009-DUP1)

Source: Y310699-06

Prepared: 10/30/2023 Analyzed: 11/01/2023

Calcium PPM	211	10.0	mg/L		238			11.8	50	
SAR	ND	0.0100	SAR		2.65				200	
Magnesium PPM	48.4	10.0	mg/L		55.6			13.9	50	
Sodium PPM	203	10.0	"		175			15.3	50	

Origins Laboratory, Inc.



The results in this report apply to the samples analyzed in accordance with the chain of custody document. This analytical report must be reproduced in its entirety.

Eagle Environmental Consulting, LLC
 8000 W 44th Ave
 Wheat Ridge CO 80033

Andrew Newberry
 Project Number: -
 Project: Noble - Shable #14-25

Saturated Paste - Quality Control
Origins Laboratory, Inc.

Analyte	Result	Reporting Limit	Units	Spike Level	Source Result	%REC	%REC Limits	RPD	RPD Limit	Notes
---------	--------	-----------------	-------	-------------	---------------	------	-------------	-----	-----------	-------

Batch B3J3015 - Saturated Paste pH/EC

Duplicate (B3J3015-DUP1)		Source: Y310699-06			Prepared: 10/30/2023 Analyzed: 11/01/2023					
pH	7.68		pH Units		7.39			3.85	25	

Origins Laboratory, Inc.



The results in this report apply to the samples analyzed in accordance with the chain of custody document. This analytical report must be reproduced in its entirety.

Eagle Environmental Consulting, LLC
8000 W 44th Ave
Wheat Ridge CO 80033

Andrew Newberry
Project Number: -
Project: Noble - Shable #14-25

Notes and Definitions

ND Analyte NOT DETECTED at or above the reporting limit

RPD Relative Percent Difference

All soil results are reported at a wet weight basis.

Origins Laboratory, Inc.



The results in this report apply to the samples analyzed in accordance with the chain of custody document. This analytical report must be reproduced in its entirety.