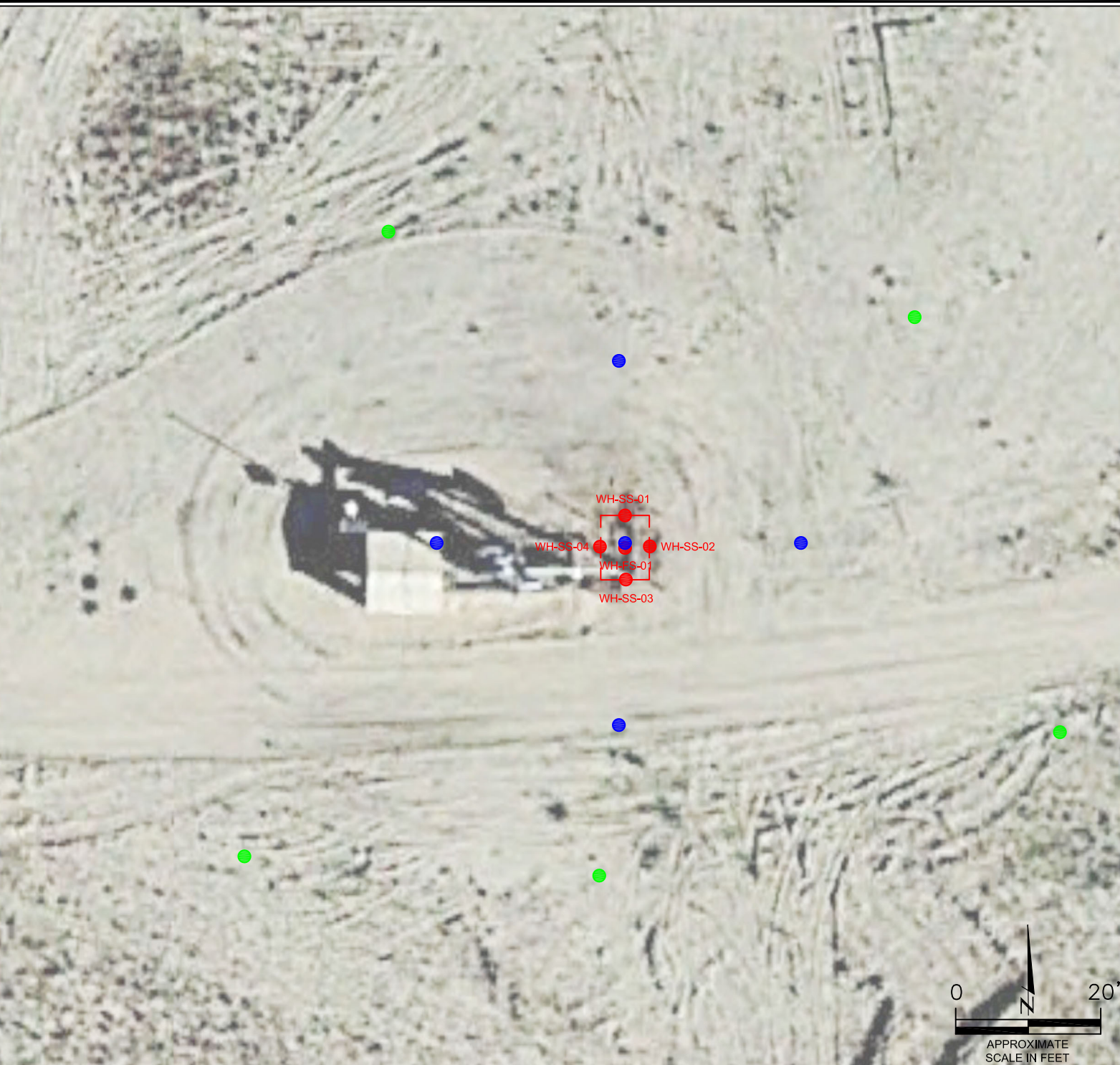


**LEGEND**

- — WELLHEAD ASSESSMENT BOUNDARIES
- PREVIOUS SOIL SAMPLE LOCATIONS ABOVE ECMC TABLE 915-1 REGULATORY LIMITS
- PROPOSED SOIL BORING LOCATIONS (5)  
\*TO BE COMPLETED AS MONITORING WELLS IF GROUNDWATER IS ENCOUNTERED
- PROPOSED BACKGROUND SAMPLE LOCATIONS (5)



PROPOSED ASSESSMENT MAP  
SHABLE #14-23  
HISTORICAL RELEASE  
40.575050 / -104.523690  
SW¼ NW¼ SEC.14 T7N R64W 6PM  
WELD COUNTY, COLORADO  
API # 05-123-28034  
REMEDIATION # 30764

FIGURE NO.  
1

DRAWN BY:  
GEC



**EAGLE**  
ENVIRONMENTAL  
CONSULTING, LLC  
8000 W 44th Ave, Wheat Ridge, CO 80033  
Ph: 303-433-0479 • F: 303-325-5449