

NOBLE ENERGY, INC

Location: COLORADO Slot: SLOT#04 BORYS C22-755 (2295'FNL & 2339'FWL,SEC.22)

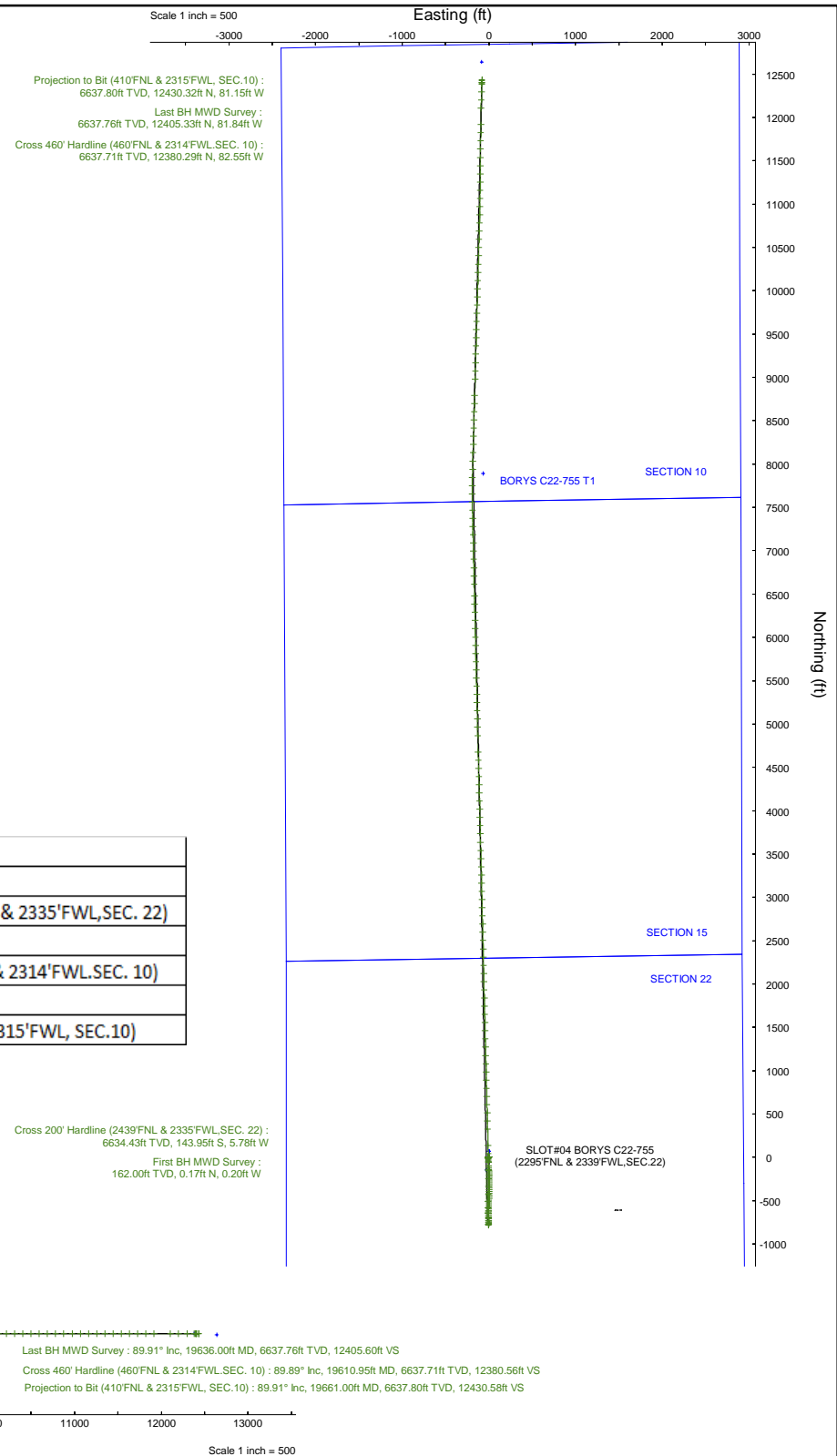
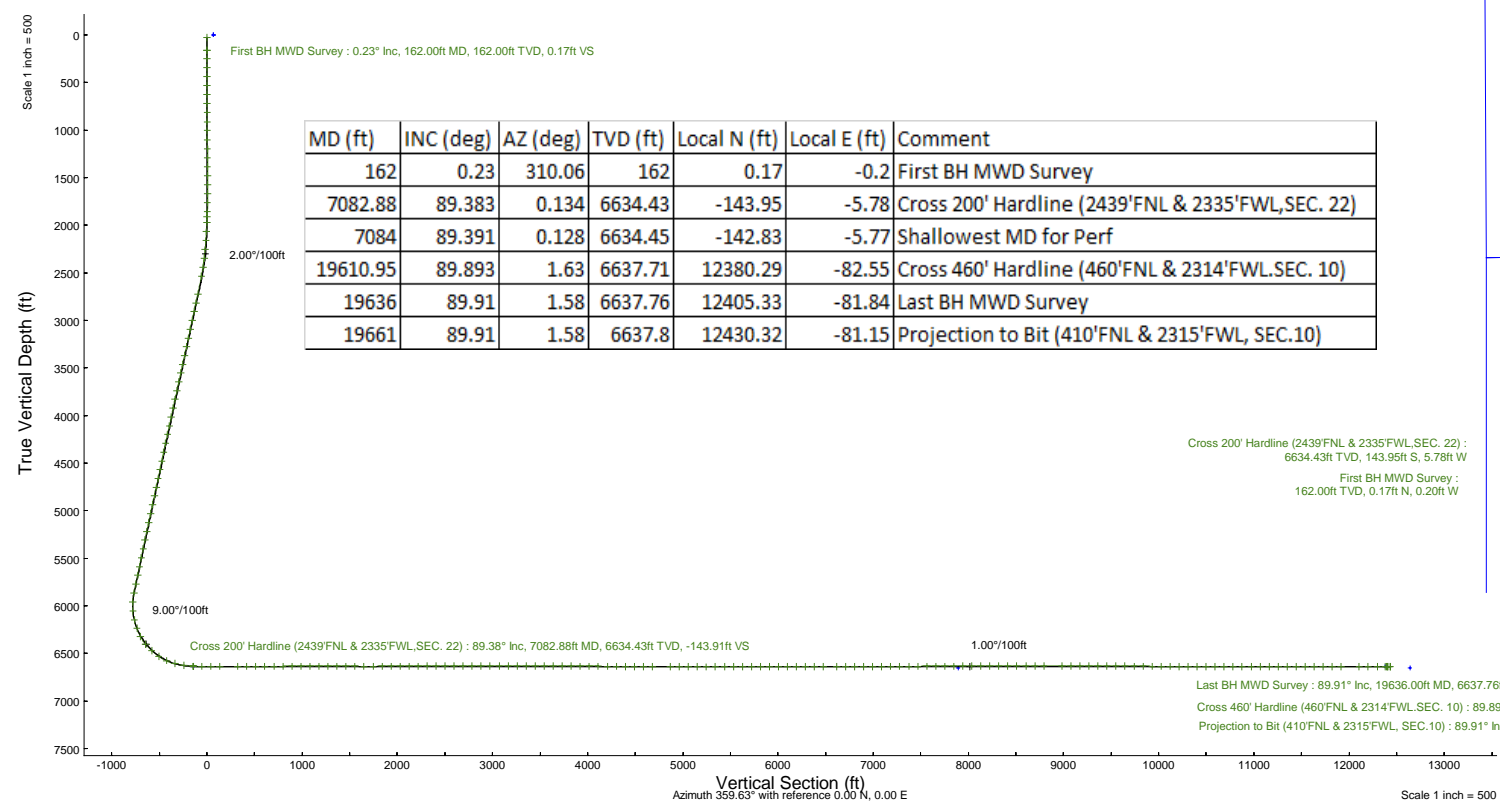
Field: WELD COUNTY (NOBLE NAD 83 GRID) Well: BORYS C22-755

Facility: SEC.22-T04N-R64W Wellbore: BORYS C22-755 PWB

Plot reference wellpath is BORYS C22-755 (REV-B.0) PWP		Grid System: NAD83 / Lambert Colorado SP, Northern Zone (501), US feet
True vertical depths are referenced to (4662'GL+29'KB = 4691'RKB) (RKB)		North Reference: Grid north
Reference wellpath measured depths are referenced to (4662'GL+29'KB = 4691'RKB) (RKB)		Scale: True distance
(4662'GL+29'KB = 4691'RKB) (RKB) to Mean Sea Level: 4691 feet		Coordinates are in feet referenced to Slot
Mean Sea Level to Ground level (At Slot: SLOT#04 BORYS C22-755 (2295'FNL & 2339'FWL,SEC.22)): 0 feet		Depths are in feet
Offset wellpath MDs are referenced to each path's default MD datum		Created by: marissam01 on 2023-10-05; Database: WA_Denver

Location Information

Facility Name		Grid East (US ft)	Grid North (US ft)	Latitude	Longitude	
SEC.22-T04N-R64W		3288340.106	1353247.973	40°17'56.6520"N	104°32'16.5480"W	
Slot	Local N (ft)	Local E (ft)	Grid East (US ft)	Grid North (US ft)	Latitude	Longitude
SLOT#04 BORYS C22-755 (2295'FNL & 2339'FWL,SEC.22)	-69.21	0.75	3288340.857	1353178.762	40°17'55.9680"N	104°32'16.5480"W
(4662'GL+29'KB = 4691'RKB) (RKB) to Ground level (At Slot: SLOT#04 BORYS C22-755 (2295'FNL & 2339'FWL,SEC.22))		4691ft				
Mean Sea Level to Ground level (At Slot: SLOT#04 BORYS C22-755 (2295'FNL & 2339'FWL,SEC.22))		0ft				
(4662'GL+29'KB = 4691'RKB) (RKB) to Mean Sea Level		4691ft				



REFERENCE WELLPATH IDENTIFICATION

Operator	NOBLE ENERGY, INC	Well	BORYS C22-755
Field	WELD COUNTY (NOBLE NAD 83 GRID)	API/Legal	05-123-48907
Facility	SEC.22-T04N-R64W	Wellbore	BORYS C22-755 AWB
Slot	SLOT#04 BORYS C22-755 (2295'FNL & 2339'FWL,SEC.22)		

REPORT SETUP INFORMATION

Projection System	NAD83 / Lambert Colorado SP, Northern Zone (501), US feet	Software System	WellArchitect® 6.0
North Reference	Grid	User	Martsam01
Scale	0.999957	Report Generated	10/5/2023 at 10:20:07 AM
Convergence at slot	0.62° East	Database	WA_Denver

WELLPATH LOCATION

	Local coordinates		Grid coordinates		Geographic coordinates	
	North[ft]	East[ft]	Easting[US ft]	Northing[US ft]	Latitude	Longitude
Slot Location	-69.21	0.75	3268340.86	1353178.76	40.2988800°	-104.5379300°
Facility Reference Pt			3268340.11	1353247.97	40.2990700°	-104.5379300°
Field Reference Pt			3000000.00	4454105.15	48.7761986°	-105.5000000°

WELLPATH DATUM

Calculation method	Minimum curvature	(4662'GL+29'KB = 4691'RKB) (RKB) to Facility Vertical Datum	4691.00ft
Horizontal Reference Pt	Slot	(4662'GL+29'KB = 4691'RKB) (RKB) to Mean Sea Level	4691.00ft
Vertical Reference Pt	(4662'GL+29'KB = 4691'RKB) (RKB)	(4662'GL+29'KB = 4691'RKB) (RKB) to Ground Level at Slot (SLOT#04 BORYS C22-755 (2295'FNL & 2339'FWL,SEC.22))	4691.00ft
MD Reference Pt	(4662'GL+29'KB = 4691'RKB) (RKB)	Section Origin	N 0.00, E 0.00 ft
Field Vertical Reference	Mean Sea Level	Section Azimuth	359.63°

REFERENCE WELLPATH IDENTIFICATION			
Operator	NOBLE ENERGY, INC	Well	BORYS C22-755
Field	WELD COUNTY (NOBLE NAD 83 GRID)	API/Legal	05-123-48907
Facility	SEC.22-T04N-R64W	Wellbore	BORYS C22-755 AWB
Slot	SLOT#04 BORYS C22-755 (2295'FNL & 2339'FWL,SEC.22)		

WELLPATH DATA (209 stations) † = interpolated, ‡ = extrapolated station

MD [ft]	Inclination [°]	Azimuth [°]	TVD [ft]	Vert Sect [ft]	North [ft]	East [ft]	Latitude	Longitude	DLS [°/100ft]	Comments
0.00†	0.000	310.060	0.00	0.00	0.00	0.00	40.2988800	-104.5379300	0.00	
29.00	0.000	310.060	29.00	0.00	0.00	0.00	40.2988800	-104.5379300	0.00	
162.00	0.230	310.060	162.00	0.17	0.17	-0.20	40.2988805	-104.5379307	0.17	First BH MWD Survey
252.00	0.310	308.050	252.00	0.44	0.44	-0.53	40.2988812	-104.5379319	0.09	
343.00	0.310	285.840	343.00	0.66	0.66	-0.96	40.2988818	-104.5379334	0.13	
438.00	0.370	286.030	438.00	0.82	0.81	-1.51	40.2988823	-104.5379354	0.06	
533.00	0.420	296.270	532.99	1.06	1.05	-2.11	40.2988829	-104.5379375	0.09	
627.00	0.450	298.900	626.99	1.40	1.38	-2.75	40.2988839	-104.5379398	0.04	
722.00	0.230	297.020	721.99	1.67	1.65	-3.24	40.2988846	-104.5379416	0.23	
817.00	0.510	305.830	816.99	2.01	1.98	-3.76	40.2988856	-104.5379434	0.30	
912.00	0.330	290.430	911.98	2.35	2.33	-4.35	40.2988865	-104.5379455	0.22	
1006.00	0.350	279.320	1005.98	2.50	2.47	-4.89	40.2988869	-104.5379474	0.07	
1101.00	0.400	309.210	1100.98	2.76	2.72	-5.43	40.2988876	-104.5379494	0.21	
1196.00	0.510	295.800	1195.98	3.16	3.12	-6.07	40.2988887	-104.5379516	0.16	
1290.00	0.540	301.100	1289.97	3.57	3.53	-6.83	40.2988899	-104.5379543	0.06	
1385.00	0.480	332.360	1384.97	4.16	4.11	-7.40	40.2988915	-104.5379564	0.30	
1480.00	0.360	342.950	1479.97	4.80	4.75	-7.67	40.2988933	-104.5379573	0.15	
1575.00	0.360	290.010	1574.97	5.19	5.14	-8.04	40.2988943	-104.5379586	0.34	
1670.00	0.400	230.480	1669.96	5.08	5.03	-8.57	40.2988941	-104.5379605	0.40	
1764.00	0.830	196.560	1763.96	4.23	4.17	-9.02	40.2988917	-104.5379622	0.58	
1859.00	1.380	196.810	1858.94	2.47	2.41	-9.55	40.2988869	-104.5379641	0.58	
1908.00	1.520	195.600	1907.93	1.29	1.22	-9.89	40.2988836	-104.5379654	0.29	
1973.00	2.470	177.440	1972.89	-0.94	-1.01	-10.06	40.2988775	-104.5379661	1.74	
2068.00	2.640	177.050	2067.79	-5.17	-5.24	-9.86	40.2988659	-104.5379655	0.18	
2162.00	4.060	177.310	2161.63	-10.66	-10.72	-9.59	40.2988508	-104.5379648	1.51	
2257.00	5.470	176.380	2256.30	-18.54	-18.60	-9.15	40.2988292	-104.5379635	1.49	
2351.00	7.190	176.260	2349.72	-28.89	-28.95	-8.48	40.2988008	-104.5379615	1.83	
2446.00	8.640	176.270	2443.81	-41.95	-42.00	-7.63	40.2987649	-104.5379590	1.53	
2541.00	10.560	176.250	2537.48	-57.76	-57.81	-6.59	40.2987215	-104.5379559	2.02	
2730.00	12.530	175.430	2722.65	-95.50	-95.53	-3.83	40.2986179	-104.5379474	1.05	
2825.00	12.230	176.210	2815.44	-115.82	-115.84	-2.34	40.2985621	-104.5379429	0.36	
2919.00	12.330	175.930	2907.29	-135.78	-135.79	-0.97	40.2985073	-104.5379388	0.12	
3014.00	12.390	176.260	3000.08	-156.08	-156.08	0.41	40.2984516	-104.5379346	0.10	
3108.00	11.920	180.520	3091.98	-175.85	-175.85	0.98	40.2983973	-104.5379333	1.08	
3203.00	12.200	180.400	3184.88	-195.70	-195.69	0.82	40.2983428	-104.5379347	0.30	
3297.00	12.090	180.500	3276.78	-215.47	-215.47	0.67	40.2982886	-104.5379360	0.12	
3391.00	12.080	180.180	3368.69	-235.15	-235.15	0.55	40.2982345	-104.5379372	0.07	
3486.00	12.090	180.160	3461.59	-255.04	-255.04	0.49	40.2981800	-104.5379381	0.01	
3580.00	12.400	180.300	3553.45	-274.97	-274.98	0.41	40.2981252	-104.5379392	0.33	
3675.00	12.240	180.320	3646.26	-295.24	-295.25	0.30	40.2980696	-104.5379404	0.17	
3769.00	12.220	179.960	3738.13	-315.15	-315.16	0.26	40.2980149	-104.5379413	0.08	
3863.00	12.140	179.790	3830.01	-334.99	-334.99	0.30	40.2979605	-104.5379420	0.09	
3958.00	12.210	180.540	3922.88	-355.02	-355.03	0.24	40.2979055	-104.5379429	0.18	
4052.00	12.200	179.980	4014.75	-374.89	-374.90	0.15	40.2978510	-104.5379440	0.13	
4146.00	12.070	180.160	4106.65	-394.65	-394.66	0.13	40.2977967	-104.5379449	0.14	

REFERENCE WELLPATH IDENTIFICATION			
Operator	NOBLE ENERGY, INC	Well	BORYS C22-755
Field	WELD COUNTY (NOBLE NAD 83 GRID)	API/Legal	05-123-48907
Facility	SEC.22-T04N-R64W	Wellbore	BORYS C22-755 AWB
Slot	SLOT#04 BORYS C22-755 (2295'FNL & 2339'FWL,SEC.22)		

WELLPATH DATA (209 stations) † = interpolated, ‡ = extrapolated station

MD [ft]	Inclination [°]	Azimuth [°]	TVD [ft]	Vert Sect [ft]	North [ft]	East [ft]	Latitude	Longitude	DLS [°/100ft]	Comments
4241.00	12.180	179.920	4199.53	-414.60	-414.61	0.11	40.2977420	-104.5379457	0.13	
4335.00	12.250	179.860	4291.40	-434.49	-434.50	0.15	40.2976874	-104.5379464	0.08	
4429.00	12.080	179.950	4383.29	-454.30	-454.31	0.18	40.2976330	-104.5379470	0.18	
4524.00	12.040	180.240	4476.20	-474.15	-474.16	0.15	40.2975785	-104.5379479	0.08	
4618.00	12.170	180.500	4568.11	-493.86	-493.87	0.02	40.2975244	-104.5379491	0.15	
4713.00	12.080	181.580	4660.99	-513.81	-513.82	-0.34	40.2974697	-104.5379512	0.26	
4808.00	12.060	181.040	4753.89	-533.66	-533.68	-0.79	40.2974152	-104.5379536	0.12	
4902.00	12.200	181.050	4845.79	-553.41	-553.43	-1.15	40.2973610	-104.5379557	0.15	
4997.00	12.100	181.030	4938.66	-573.40	-573.42	-1.52	40.2973061	-104.5379577	0.11	
5091.00	11.930	181.520	5030.60	-592.96	-592.98	-1.95	40.2972524	-104.5379601	0.21	
5186.00	11.870	181.750	5123.56	-612.54	-612.56	-2.51	40.2971987	-104.5379628	0.08	
5281.00	11.880	181.640	5216.53	-632.07	-632.10	-3.09	40.2971451	-104.5379657	0.03	
5375.00	11.870	181.780	5308.51	-651.40	-651.44	-3.66	40.2970920	-104.5379685	0.03	
5469.00	11.640	181.480	5400.54	-670.54	-670.58	-4.21	40.2970395	-104.5379712	0.25	
5564.00	11.760	181.620	5493.57	-689.79	-689.84	-4.73	40.2969867	-104.5379738	0.13	
5659.00	11.700	181.690	5586.59	-709.10	-709.14	-5.29	40.2969337	-104.5379765	0.06	
5753.00	11.880	181.190	5678.60	-728.29	-728.34	-5.77	40.2968810	-104.5379790	0.22	
5848.00	11.800	181.300	5771.58	-747.78	-747.83	-6.19	40.2968275	-104.5379813	0.09	
5942.00	11.860	181.150	5863.58	-767.04	-767.10	-6.61	40.2967747	-104.5379835	0.07	
6037.00	2.690	178.730	5957.72	-779.05	-779.11	-6.75	40.2967417	-104.5379845	9.66	
6131.00	5.700	39.600	6051.59	-777.68	-777.72	-3.72	40.2967454	-104.5379736	8.44	
6226.00	12.830	0.340	6145.36	-763.49	-763.51	-0.65	40.2967844	-104.5379620	9.63	
6321.00	20.230	358.100	6236.37	-736.48	-736.51	-1.13	40.2968585	-104.5379627	7.82	
6415.00	28.810	353.030	6321.83	-697.66	-697.70	-4.42	40.2969651	-104.5379730	9.39	
6510.00	38.190	354.850	6400.96	-645.54	-645.61	-9.85	40.2971082	-104.5379904	9.93	
6605.00	47.280	359.260	6470.68	-581.23	-581.32	-12.94	40.2972848	-104.5379990	10.07	
6699.00	56.090	2.110	6528.91	-507.57	-507.66	-11.95	40.2974869	-104.5379926	9.67	
6794.00	65.550	2.160	6575.17	-424.80	-424.87	-8.86	40.2977141	-104.5379783	9.96	
6888.00	76.080	1.040	6606.02	-336.20	-336.25	-6.42	40.2979573	-104.5379661	11.26	
6983.00	80.080	359.790	6625.64	-243.28	-243.32	-5.75	40.2982123	-104.5379601	4.40	
7078.00	89.350	0.160	6634.38	-148.79	-148.83	-5.79	40.2984717	-104.5379565	9.77	
7082.88†	89.383	0.134	6634.43	-143.91	-143.95	-5.78	40.2984851	-104.5379563	0.86	Cross 200' Hardline (2439'FNL & 2335'FWL,SEC. 22)
7084.00†	89.391	0.128	6634.45	-142.79	-142.83	-5.77	40.2984881	-104.5379563	0.86	Shallowest MD for Perf
7173.00	90.000	359.660	6634.92	-53.79	-53.83	-5.94	40.2987324	-104.5379534	0.86	
7267.00	89.910	358.640	6634.99	40.20	40.16	-7.33	40.2989904	-104.5379547	1.09	
7362.00	90.030	358.400	6635.04	135.19	135.13	-9.79	40.2992512	-104.5379598	0.28	
7551.00	90.060	358.630	6634.89	324.15	324.06	-14.69	40.2997699	-104.5379700	0.12	
7646.00	90.090	358.440	6634.77	419.13	419.03	-17.11	40.3000307	-104.5379751	0.20	
7740.00	89.940	358.460	6634.75	513.11	513.00	-19.66	40.3002886	-104.5379805	0.16	
7835.00	90.060	358.420	6634.75	608.09	607.96	-22.24	40.3005494	-104.5379861	0.13	
7930.00	90.030	358.260	6634.67	703.07	702.92	-24.99	40.3008101	-104.5379923	0.17	
8024.00	90.090	358.540	6634.57	797.05	796.88	-27.62	40.3010681	-104.5379980	0.30	
8119.00	90.090	358.600	6634.42	892.03	891.85	-29.99	40.3013288	-104.5380028	0.06	
8214.00	90.120	358.600	6634.25	987.02	986.83	-32.31	40.3015896	-104.5380075	0.03	
8309.00	89.940	358.420	6634.20	1082.00	1081.79	-34.78	40.3018503	-104.5380126	0.27	

REFERENCE WELLPATH IDENTIFICATION			
Operator	NOBLE ENERGY, INC	Well	BORYS C22-755
Field	WELD COUNTY (NOBLE NAD 83 GRID)	API/Legal	05-123-48907
Facility	SEC.22-T04N-R64W	Wellbore	BORYS C22-755 AWB
Slot	SLOT#04 BORYS C22-755 (2295'FNL & 2339'FWL,SEC.22)		

WELLPATH DATA (209 stations)

MD [ft]	Inclination [°]	Azimuth [°]	TVD [ft]	Vert Sect [ft]	North [ft]	East [ft]	Latitude	Longitude	DLS [°/100ft]	Comments
8403.00	90.060	358.600	6634.20	1175.98	1175.76	-37.23	40.3021083	-104.5380177	0.23	
8498.00	89.970	358.830	6634.17	1270.97	1270.74	-39.36	40.3023691	-104.5380217	0.26	
8593.00	89.880	358.520	6634.30	1365.95	1365.71	-41.55	40.3026298	-104.5380258	0.34	
8687.00	89.910	358.610	6634.47	1459.94	1459.68	-43.91	40.3028878	-104.5380306	0.10	
8782.00	90.000	358.470	6634.55	1554.92	1554.65	-46.33	40.3031486	-104.5380356	0.18	
8877.00	89.880	358.460	6634.65	1649.90	1649.62	-48.87	40.3034093	-104.5380410	0.13	
8972.00	90.060	358.700	6634.70	1744.88	1744.59	-51.23	40.3036700	-104.5380458	0.32	
9066.00	90.400	358.590	6634.32	1838.87	1838.56	-53.45	40.3039280	-104.5380501	0.38	
9161.00	89.940	358.550	6634.04	1933.85	1933.53	-55.82	40.3041888	-104.5380549	0.49	
9256.00	89.880	358.650	6634.19	2028.84	2028.50	-58.14	40.3044495	-104.5380595	0.12	
9350.00	90.120	358.840	6634.19	2122.83	2122.48	-60.20	40.3047075	-104.5380633	0.33	
9445.00	90.650	358.770	6633.55	2217.81	2217.46	-62.18	40.3049683	-104.5380667	0.56	
9539.00	90.060	358.730	6632.96	2311.80	2311.43	-64.23	40.3052263	-104.5380704	0.63	
9634.00	89.880	358.450	6633.01	2406.78	2406.40	-66.57	40.3054870	-104.5380751	0.35	
9729.00	89.940	358.680	6633.16	2501.77	2501.37	-68.95	40.3057478	-104.5380799	0.25	
9823.00	89.970	358.620	6633.24	2595.75	2595.35	-71.16	40.3060058	-104.5380842	0.07	
9918.00	90.090	358.580	6633.19	2690.74	2690.32	-73.48	40.3062665	-104.5380888	0.13	
10013.00	90.060	358.650	6633.06	2785.72	2785.29	-75.78	40.3065273	-104.5380933	0.08	
10107.00	89.940	358.480	6633.06	2879.71	2879.26	-78.13	40.3067853	-104.5380981	0.22	
10202.00	90.250	358.760	6632.91	2974.69	2974.23	-80.42	40.3070460	-104.5381026	0.44	
10297.00	90.120	358.610	6632.60	3069.68	3069.21	-82.60	40.3073068	-104.5381068	0.21	
10392.00	90.180	358.640	6632.35	3164.67	3164.18	-84.88	40.3075675	-104.5381112	0.07	
10486.00	90.340	358.530	6631.92	3258.65	3258.15	-87.20	40.3078255	-104.5381159	0.21	
10581.00	90.030	358.560	6631.62	3353.63	3353.12	-89.62	40.3080863	-104.5381209	0.33	
10676.00	89.750	358.460	6631.80	3448.61	3448.09	-92.09	40.3083470	-104.5381260	0.31	
10771.00	89.970	358.640	6632.03	3543.60	3543.06	-94.49	40.3086077	-104.5381309	0.30	
10865.00	89.820	358.740	6632.20	3637.58	3637.03	-96.64	40.3088657	-104.5381350	0.19	
10960.00	89.750	358.730	6632.56	3732.57	3732.01	-98.74	40.3091265	-104.5381388	0.07	
11055.00	89.660	358.460	6633.05	3827.55	3826.98	-101.07	40.3093872	-104.5381435	0.30	
11149.00	89.720	358.510	6633.56	3921.53	3920.94	-103.55	40.3096452	-104.5381487	0.08	
11244.00	89.690	358.440	6634.05	4016.51	4015.91	-106.08	40.3099060	-104.5381541	0.08	
11339.00	89.690	358.450	6634.56	4111.49	4110.87	-108.66	40.3101667	-104.5381597	0.01	
11434.00	89.750	358.420	6635.03	4206.47	4205.84	-111.25	40.3104274	-104.5381653	0.07	
11528.00	89.750	358.460	6635.44	4300.45	4299.80	-113.81	40.3106854	-104.5381708	0.04	
11623.00	89.570	358.570	6636.00	4395.43	4394.77	-116.27	40.3109461	-104.5381759	0.22	
11717.00	89.690	358.450	6636.61	4489.41	4488.73	-118.72	40.3112041	-104.5381810	0.18	
11812.00	89.660	358.460	6637.15	4584.39	4583.70	-121.28	40.3114649	-104.5381865	0.03	
11907.00	89.690	358.430	6637.68	4679.37	4678.66	-123.86	40.3117256	-104.5381921	0.04	
12096.00	89.780	358.650	6638.56	4868.33	4867.60	-128.67	40.3122443	-104.5382020	0.13	
12191.00	89.820	358.650	6638.89	4963.32	4962.57	-130.91	40.3125051	-104.5382063	0.04	
12286.00	89.750	358.580	6639.25	5058.30	5057.54	-133.21	40.3127658	-104.5382109	0.10	
12381.00	89.750	358.530	6639.66	5153.28	5152.51	-135.60	40.3130266	-104.5382158	0.05	
12475.00	89.720	358.660	6640.10	5247.27	5246.48	-137.91	40.3132846	-104.5382204	0.14	
12570.00	90.340	358.700	6640.05	5342.25	5341.45	-140.09	40.3135453	-104.5382245	0.65	
12665.00	90.120	358.660	6639.66	5437.24	5436.43	-142.28	40.3138060	-104.5382287	0.24	

REFERENCE WELLPATH IDENTIFICATION			
Operator	NOBLE ENERGY, INC	Well	BORYS C22-755
Field	WELD COUNTY (NOBLE NAD 83 GRID)	API/Legal	05-123-48907
Facility	SEC.22-T04N-R64W	Wellbore	BORYS C22-755 AWB
Slot	SLOT#04 BORYS C22-755 (2295'FNL & 2339'FWL,SEC.22)		

WELLPATH DATA (209 stations)

MD [ft]	Inclination [°]	Azimuth [°]	TVD [ft]	Vert Sect [ft]	North [ft]	East [ft]	Latitude	Longitude	DLS [°/100ft]	Comments
12760.00	90.060	358.660	6639.52	5532.22	5531.40	-144.50	40.3140668	-104.5382329	0.06	
12854.00	90.120	358.610	6639.37	5626.21	5625.38	-146.74	40.3143248	-104.5382373	0.08	
12949.00	90.150	358.750	6639.14	5721.20	5720.35	-148.93	40.3145855	-104.5382415	0.15	
13044.00	90.150	358.720	6638.89	5816.19	5815.33	-151.03	40.3148463	-104.5382453	0.03	
13138.00	90.150	358.650	6638.65	5910.17	5909.30	-153.19	40.3151043	-104.5382494	0.07	
13233.00	90.150	358.530	6638.40	6005.16	6004.27	-155.52	40.3153650	-104.5382541	0.13	
13328.00	90.150	358.560	6638.15	6100.14	6099.24	-157.94	40.3156258	-104.5382590	0.03	
13422.00	90.060	358.580	6637.98	6194.12	6193.21	-160.28	40.3158838	-104.5382638	0.10	
13517.00	90.150	358.860	6637.81	6289.11	6288.19	-162.40	40.3161445	-104.5382677	0.31	
13611.00	90.120	358.500	6637.58	6383.10	6382.16	-164.57	40.3164025	-104.5382718	0.38	
13706.00	90.030	358.570	6637.46	6478.08	6477.13	-167.00	40.3166633	-104.5382768	0.12	
13844.00	90.060	358.590	6637.35	6616.06	6615.09	-170.42	40.3170420	-104.5382837	0.03	
13939.00	90.090	358.700	6637.23	6711.04	6710.06	-172.66	40.3173028	-104.5382881	0.12	
14033.00	90.090	358.680	6637.08	6805.03	6804.04	-174.81	40.3175608	-104.5382921	0.02	
14128.00	90.150	358.840	6636.88	6900.02	6899.02	-176.87	40.3178216	-104.5382958	0.18	
14223.00	90.430	358.880	6636.40	6995.01	6994.00	-178.76	40.3180823	-104.5382989	0.30	
14318.00	90.180	358.600	6635.89	7090.00	7088.97	-180.85	40.3183431	-104.5383027	0.40	
14412.00	90.060	358.700	6635.70	7183.98	7182.94	-183.06	40.3186011	-104.5383070	0.17	
14507.00	90.250	358.580	6635.44	7278.97	7277.92	-185.32	40.3188618	-104.5383114	0.24	
14602.00	90.180	358.610	6635.08	7373.95	7372.89	-187.65	40.3191225	-104.5383160	0.08	
14696.00	90.250	358.840	6634.73	7467.94	7466.86	-189.74	40.3193806	-104.5383199	0.26	
14791.00	90.250	358.710	6634.32	7562.93	7561.84	-191.77	40.3196413	-104.5383235	0.14	
14886.00	90.220	358.720	6633.93	7657.92	7656.82	-193.90	40.3199021	-104.5383274	0.03	
14980.00	90.120	1.630	6633.65	7751.90	7750.81	-193.61	40.3201600	-104.5383227	3.10	
15075.00	90.120	1.640	6633.45	7846.84	7845.77	-190.90	40.3204206	-104.5383093	0.01	
15170.00	90.180	1.600	6633.20	7941.78	7940.73	-188.22	40.3206812	-104.5382960	0.08	
15264.00	90.220	1.650	6632.87	8035.73	8034.69	-185.55	40.3209390	-104.5382828	0.07	
15359.00	90.090	1.580	6632.61	8130.67	8129.65	-182.87	40.3211996	-104.5382695	0.16	
15454.00	90.180	1.640	6632.39	8225.61	8224.61	-180.20	40.3214601	-104.5382562	0.11	
15549.00	90.150	1.610	6632.12	8320.55	8319.58	-177.51	40.3217207	-104.5382429	0.04	
15643.00	90.120	1.580	6631.90	8414.50	8413.54	-174.89	40.3219785	-104.5382298	0.05	
15738.00	90.120	1.650	6631.70	8509.44	8508.50	-172.22	40.3222391	-104.5382165	0.07	
15833.00	90.150	1.480	6631.47	8604.39	8603.47	-169.62	40.3224997	-104.5382035	0.18	
15927.00	90.220	1.690	6631.17	8698.33	8697.43	-167.02	40.3227575	-104.5381906	0.24	
16022.00	90.090	1.460	6630.91	8793.28	8792.39	-164.41	40.3230181	-104.5381775	0.28	
16212.00	90.030	1.620	6630.71	8983.17	8982.32	-159.30	40.3235392	-104.5381518	0.09	
16307.00	89.660	1.370	6630.97	9078.12	9077.29	-156.83	40.3237998	-104.5381392	0.47	
16401.00	89.750	1.690	6631.45	9172.07	9171.26	-154.32	40.3240577	-104.5381266	0.35	
16496.00	89.850	1.490	6631.79	9267.01	9266.22	-151.68	40.3243182	-104.5381134	0.24	
16591.00	89.750	1.610	6632.12	9361.95	9361.18	-149.11	40.3245788	-104.5381005	0.16	
16686.00	89.820	1.560	6632.47	9456.90	9456.15	-146.48	40.3248394	-104.5380874	0.09	
16780.00	89.780	1.490	6632.80	9550.85	9550.11	-143.98	40.3250972	-104.5380748	0.09	
16875.00	89.720	1.610	6633.22	9645.79	9645.08	-141.41	40.3253578	-104.5380618	0.14	
16970.00	89.720	1.630	6633.68	9740.73	9740.04	-138.73	40.3256184	-104.5380485	0.02	
17064.00	89.690	1.650	6634.16	9834.67	9834.00	-136.04	40.3258762	-104.5380352	0.04	

REFERENCE WELLPATH IDENTIFICATION			
Operator	NOBLE ENERGY, INC	Well	BORYS C22-755
Field	WELD COUNTY (NOBLE NAD 83 GRID)	API/Legal	05-123-48907
Facility	SEC.22-T04N-R64W	Wellbore	BORYS C22-755 AWB
Slot	SLOT#04 BORYS C22-755 (2295'FNL & 2339'FWL,SEC.22)		

WELLPATH DATA (209 stations) † = interpolated, ‡ = extrapolated station										
MD [ft]	Inclination [°]	Azimuth [°]	TVD [ft]	Vert Sect [ft]	North [ft]	East [ft]	Latitude	Longitude	DLS [°/100ft]	Comments
17159.00	89.720	1.690	6634.65	9929.61	9928.96	-133.27	40.3261368	-104.5380216	0.05	
17254.00	89.780	1.640	6635.07	10024.55	10023.92	-130.51	40.3263973	-104.5380080	0.08	
17348.00	89.720	1.550	6635.48	10118.50	10117.88	-127.89	40.3266551	-104.5379950	0.12	
17443.00	89.780	1.770	6635.89	10213.43	10212.84	-125.14	40.3269157	-104.5379814	0.24	
17538.00	89.660	1.540	6636.36	10308.37	10307.80	-122.40	40.3271763	-104.5379679	0.27	
17633.00	89.910	1.600	6636.71	10403.32	10402.76	-119.79	40.3274368	-104.5379548	0.27	
17727.00	89.970	1.620	6636.81	10497.26	10496.72	-117.15	40.3276947	-104.5379417	0.07	
17822.00	89.970	1.660	6636.86	10592.20	10591.68	-114.43	40.3279552	-104.5379283	0.04	
17917.00	89.970	1.690	6636.91	10687.14	10686.64	-111.66	40.3282158	-104.5379146	0.03	
18012.00	89.940	1.600	6636.99	10782.08	10781.60	-108.93	40.3284764	-104.5379011	0.10	
18106.00	89.940	1.700	6637.08	10876.03	10875.56	-106.22	40.3287342	-104.5378878	0.11	
18201.00	89.970	0.550	6637.16	10970.99	10970.54	-104.36	40.3289948	-104.5378774	1.21	
18296.00	90.030	1.000	6637.16	11065.97	11065.54	-103.07	40.3292555	-104.5378691	0.48	
18391.00	90.030	0.640	6637.11	11160.95	11160.53	-101.71	40.3295162	-104.5378605	0.38	
18485.00	90.030	0.470	6637.06	11254.94	11254.52	-100.80	40.3297742	-104.5378536	0.18	
18580.00	90.030	0.800	6637.01	11349.92	11349.52	-99.75	40.3300349	-104.5378461	0.35	
18674.00	90.000	0.580	6636.99	11443.91	11443.51	-98.62	40.3302928	-104.5378384	0.24	
18769.00	89.910	0.560	6637.06	11538.90	11538.50	-97.67	40.3305535	-104.5378313	0.10	
18864.00	89.880	0.500	6637.23	11633.88	11633.50	-96.79	40.3308142	-104.5378245	0.07	
18958.00	90.000	0.750	6637.33	11727.87	11727.49	-95.77	40.3310722	-104.5378171	0.30	
19053.00	89.940	0.450	6637.38	11822.85	11822.49	-94.77	40.3313329	-104.5378099	0.32	
19147.00	89.940	0.620	6637.48	11916.84	11916.48	-93.89	40.3315909	-104.5378030	0.18	
19337.00	89.940	1.540	6637.68	12106.78	12106.45	-90.31	40.3321122	-104.5377828	0.48	
19431.00	90.060	1.660	6637.68	12200.72	12200.41	-87.69	40.3323700	-104.5377697	0.18	
19526.00	90.000	1.630	6637.63	12295.67	12295.37	-84.96	40.3326306	-104.5377563	0.07	
19610.95†	89.893	1.630	6637.71	12380.56	12380.29	-82.55	40.3328636	-104.5377443	0.13	Cross 460' Hardline (460'FNL & 2314'FWL,SEC. 10)
19621.00	89.880	1.630	6637.73	12390.61	12390.33	-82.26	40.3328912	-104.5377429	0.13	
19636.00	89.910	1.580	6637.76	12405.60	12405.33	-81.84	40.3329323	-104.5377408	0.39	Last BH MWD Survey
19661.00‡	89.910	1.580	6637.80	12430.58	12430.32	-81.15	40.3330009	-104.5377373	0.00	Projection to Bit (410'FNL & 2315'FWL, SEC.10)

REFERENCE WELLPATH IDENTIFICATION			
Operator	NOBLE ENERGY, INC	Well	BORYS C22-755
Field	WELD COUNTY (NOBLE NAD 83 GRID)	API/Legal	05-123-48907
Facility	SEC.22-T04N-R64W	Wellbore	BORYS C22-755 AWB
Slot	SLOT#04 BORYS C22-755 (2295'FNL & 2339'FWL,SEC.22)		

TARGETS								
Name	TVD [ft]	North [ft]	East [ft]	Grid East [US ft]	Grid North [US ft]	Latitude	Longitude	Shape
BORYS/VROOMAN C22 SECTION 10	-1.00	69.21	-0.75	3268340.11	1353247.97	40.2990700	-104.5379300	polygon
2D Polygon: dimensions not calculated								
BORYS/VROOMAN C22 SECTION 15	-1.00	69.21	-0.75	3268340.11	1353247.97	40.2990700	-104.5379300	polygon
2D Polygon: dimensions not calculated								
BORYS/VROOMAN C22 SECTION 22	-1.00	69.21	-0.75	3268340.11	1353247.97	40.2990700	-104.5379300	polygon
2D Polygon: dimensions not calculated								
BORYS C22-755 BPZ Rev-2 (460'FNL & 2314'FWL,SEC.10)	6636.00	12380.29	-81.98	3268258.88	1365558.50	40.3328636	-104.5377423	point
BORYS C22-755 LP PLAN (2439'FNL & 2312'FWL,SEC.22)	6636.00	-143.95	-28.43	3268312.43	1353034.82	40.2984857	-104.5380375	point
BORYS C22-755 BHL PLAN (200'FNL & 2314'FWL,SEC.10)	6652.00	12639.78	-83.09	3268257.77	1365817.98	40.3335758	-104.5377361	point
BORYS C22-755 T1	6652.00	7891.52	-66.86	3268274.00	1361069.93	40.3205425	-104.5378627	point

WELLPATH COMPOSITION - Ref Wellbore: BORYS C22-755 AWB Ref Wellpath: BORYS C22-755 AWP					
Start MD [ft]	End MD [ft]	Positional Uncertainty Model	Log Name/Comment	Wellbore	Survey Date
29.00	1908.00	OWSG MWD rev2 (MS+IFR1)	13.5" EVO Surface OWSG MWD rev2 (MS+IFR1) <162'-1908'>	BORYS C22-755 AWB	9/7/2023
1908.00	19661.00	OWSG MWD rev2 (MS+IFR1)	8.5" ATC Lucida OWSG MWD rev2 (MS+IFR1) 1973'-19636'>	BORYS C22-755 AWB	9/7/2023

REFERENCE WELLPATH IDENTIFICATION			
Operator	NOBLE ENERGY, INC	Well	BORYS C22-755
Field	WELD COUNTY (NOBLE NAD 83 GRID)	API/Legal	05-123-48907
Facility	SEC.22-T04N-R64W	Wellbore	BORYS C22-755 AWB
Slot	SLOT#04 BORYS C22-755 (2295'FNL & 2339'FWL,SEC.22)		

WELLPATH COMMENTS				
MD [ft]	Inclination [°]	Azimuth [°]	TVD [ft]	Comment
162.00	0.230	310.060	162.00	First BH MWD Survey
7082.88	89.383	0.134	6634.43	Cross 200' Hardline (2439'FNL & 2335'FWL,SEC. 22)
7084.00	89.391	0.128	6634.45	Shallowest MD for Perf
19610.95	89.893	1.630	6637.71	Cross 460' Hardline (460'FNL & 2314'FWL,SEC. 10)
19636.00	89.910	1.580	6637.76	Last BH MWD Survey
19661.00	89.910	1.580	6637.80	Projection to Bit (410'FNL & 2315'FWL, SEC.10)