

**KT Resources LLC  
Ant Hill Unit 18-41  
Location ID: 316340**



**As entrance signs are replaced additional information will be required**



**Access road to location**



**KT Resources LLC  
Ant Hill Unit 18-41  
Location ID: 316340**



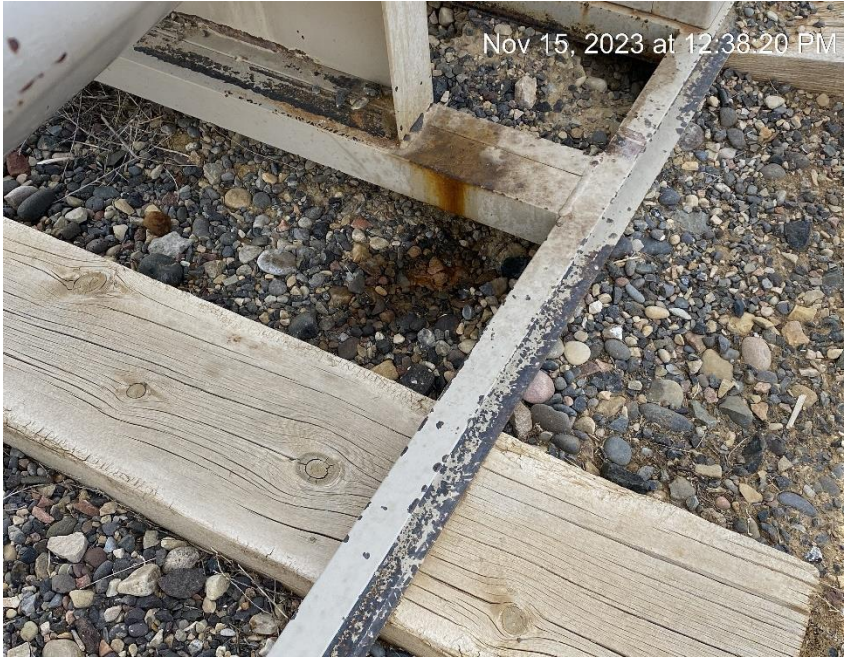
**Oily waste and staining**



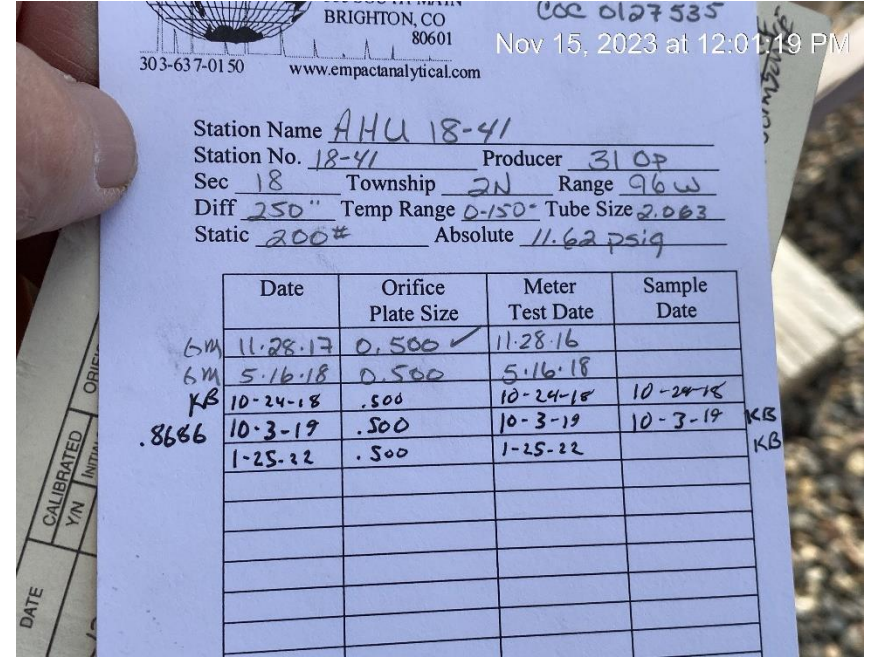
**Oily waste and staining**



**KT Resources LLC**  
**Ant Hill Unit 18-41**  
**Location ID: 316340**



## Oily waste and staining



## Gas meter calibration overdue



**KT Resources LLC  
Ant Hill Unit 18-41  
Location ID: 316340**



**Oily waste and stained soil**



**Debris**

**KT Resources LLC  
Ant Hill Unit 18-41  
Location ID: 316340**



**As well signs are replaced additional information will be required**



**Staining**



**KT Resources LLC  
Ant Hill Unit 18-41  
Location ID: 316340**



**Open end load line**



**Erosion and sediment migration exiting location**



**KT Resources LLC  
Ant Hill Unit 18-41  
Location ID: 316340**



**Erosion and sediment migration exiting location**



**Sediment migration entering location**



**KT Resources LLC  
Ant Hill Unit 18-41  
Location ID: 316340**



**Sediment migration entering location**



**Sediment migration entering location**



**KT Resources LLC  
Ant Hill Unit 18-41  
Location ID: 316340**



**Location from Souhwest corner**



**Location from Southeast corner**



**KT Resources LLC  
Ant Hill Unit 18-41  
Location ID: 316340**



**Location from Northeast corner**



**Location from Northwest corner**