

# Final Reclamation Inspection

November 2, 2023

Operator: PDC ENERGY INC - 69175

Location ID: 319342

Inspection Document #: 697504957

Weld County, CO

Chris Binschus  
Reclamation Specialist, COGCC

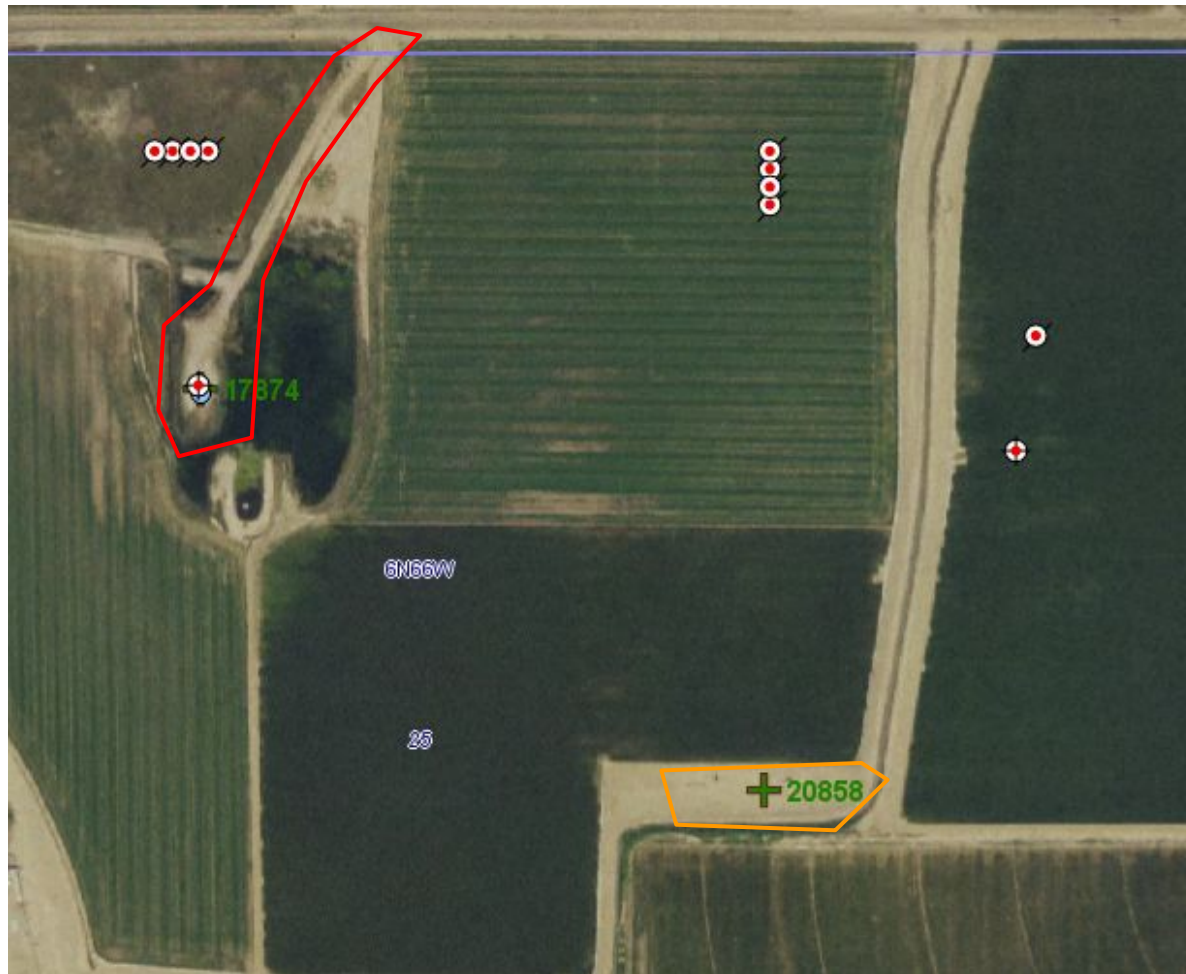


**COLORADO**

**Energy & Carbon Management  
Commission**

Department of Natural Resources

Inspection Photos  
Location Name: GERRY-66N66W 25NENW  
Location ID: 319342



**Photo 1.** ECMC aerial imagery illustrating the well location access road and well location (red polygon), and the associated off location tank battery (orange polygon).

Inspection Photos  
Location Name: GERRY-66N66W 25NENW  
Location ID: 319342



**Photo 2.** Photo taken from the well location, facing South. Photo illustrates the well location meets Rule 1004 vegetation requirements.



**Photo 3.** Photo taken from the well location, facing East. See comments under Photo 2.



Inspection Photos  
Location Name: GERRY-66N66W 25NENW  
Location ID: 319342



**Photo 4.** Photo taken from the well location, facing West. See comments under Photo 2.



**Photo 5.** Photo taken from the well location, facing North. See comments under Photo 2.



Inspection Photos  
Location Name: GERRY-66N66W 25NENW  
Location ID: 319342



**Photo 6.** Photo taken from the southern well location access road, facing North. Photo illustrates a significant portion of the access road is weedy vegetation and mostly established with tumbleweeds.

Note- the access road has been temporarily fenced off along the western and eastern perimeters.



**Photo 7.** Photo taken from another portion of the access road, facing North. See comments under Photo 6.



Inspection Photos  
Location Name: GERRY-66N66W 25NENW  
Location ID: 319342



**Photo 8.** Photo taken from the associated off location battery, facing West. Photo illustrates the tank battery meets Rule 1004 vegetative requirements.



**Photo 9.** Photo taken from the associated off location battery, facing East. See comments under Photo 8.