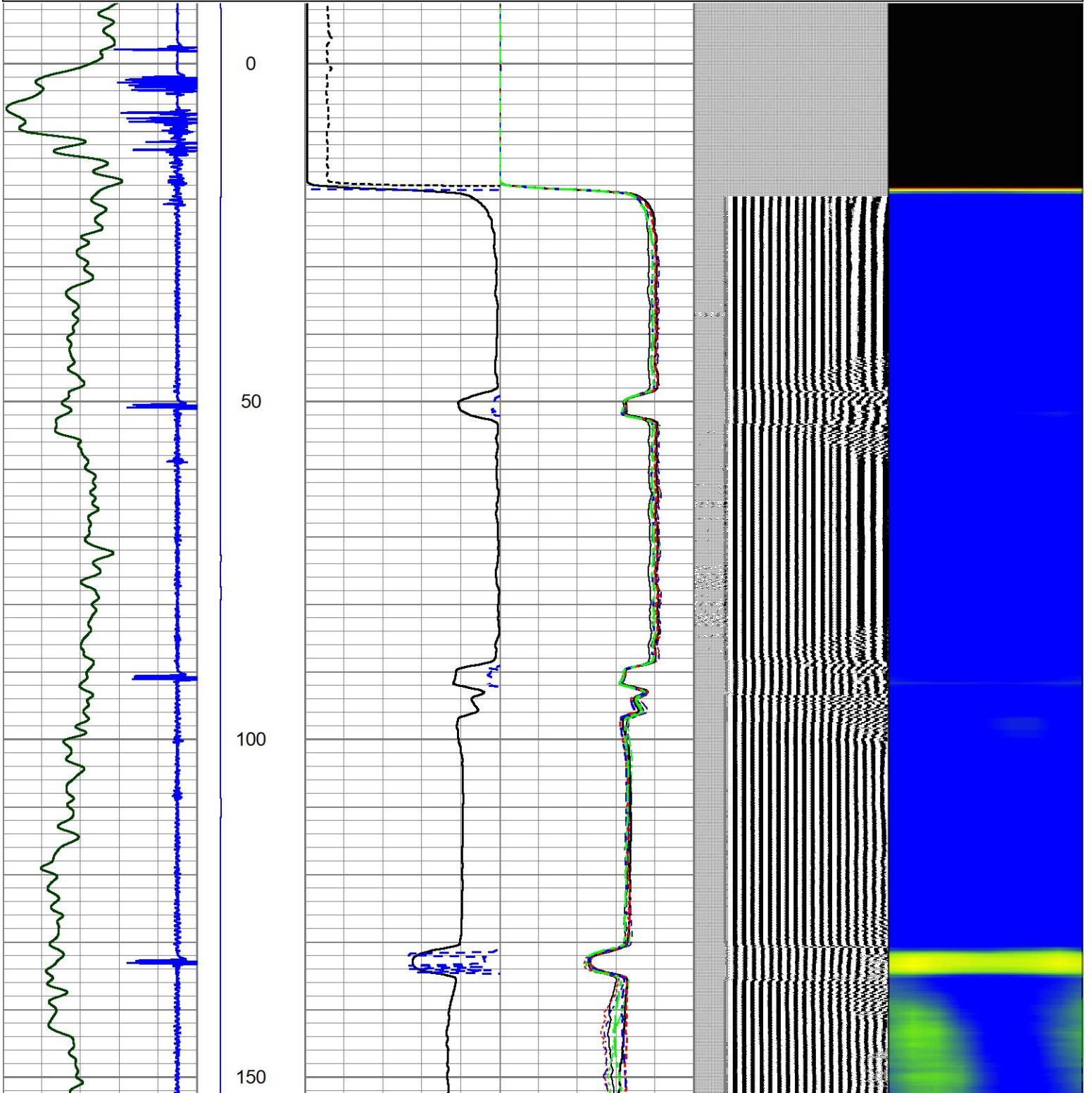
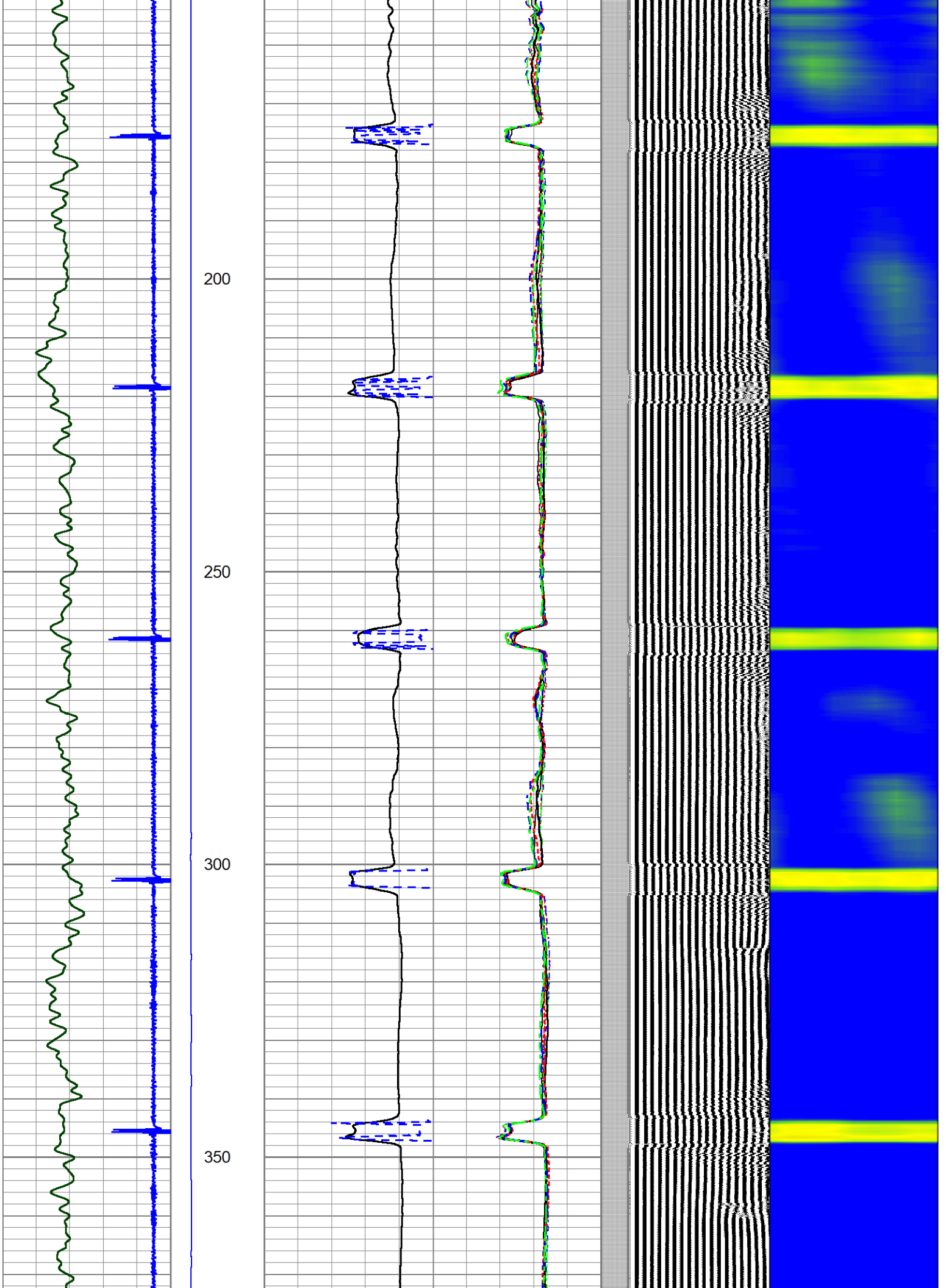
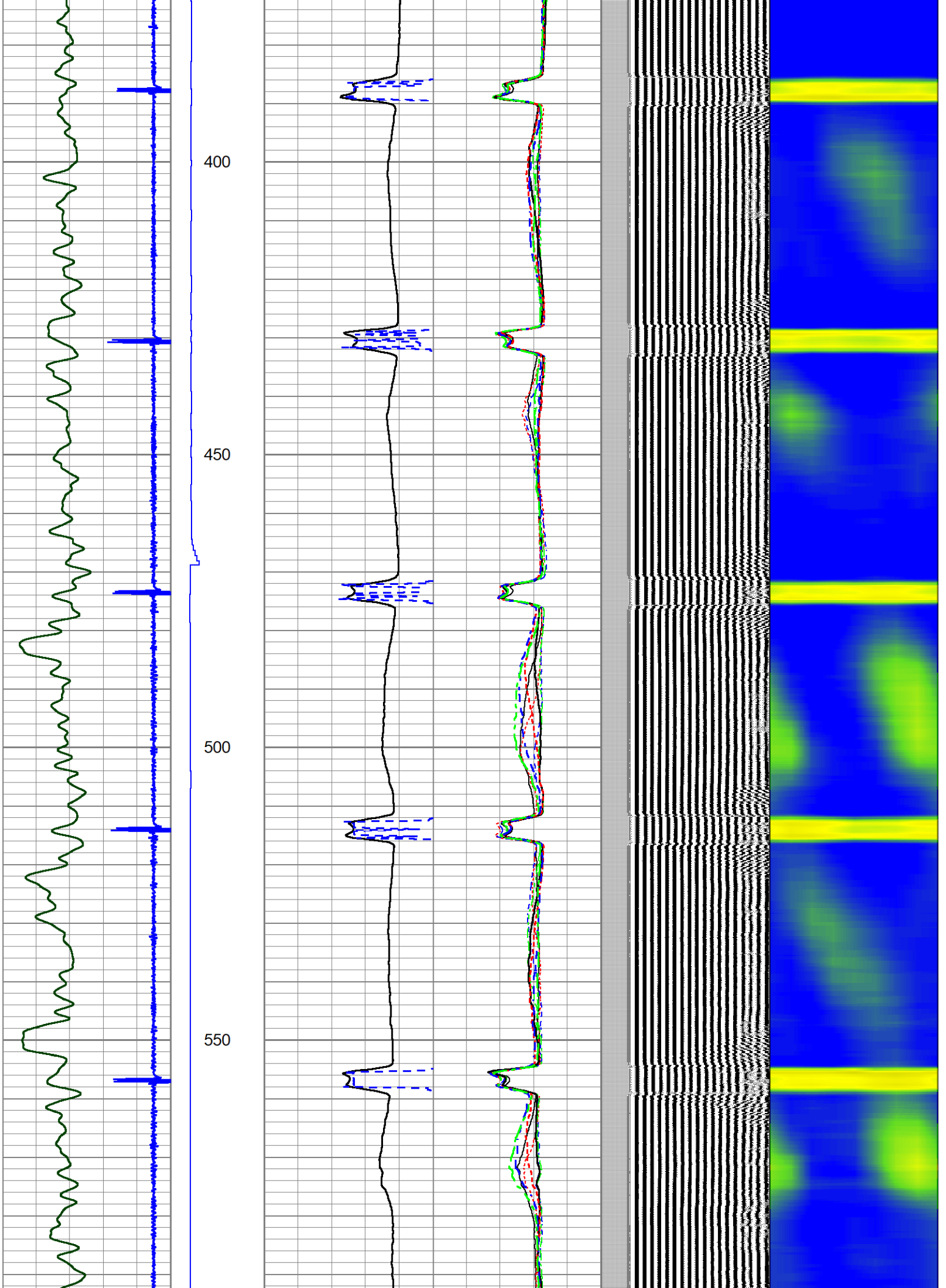


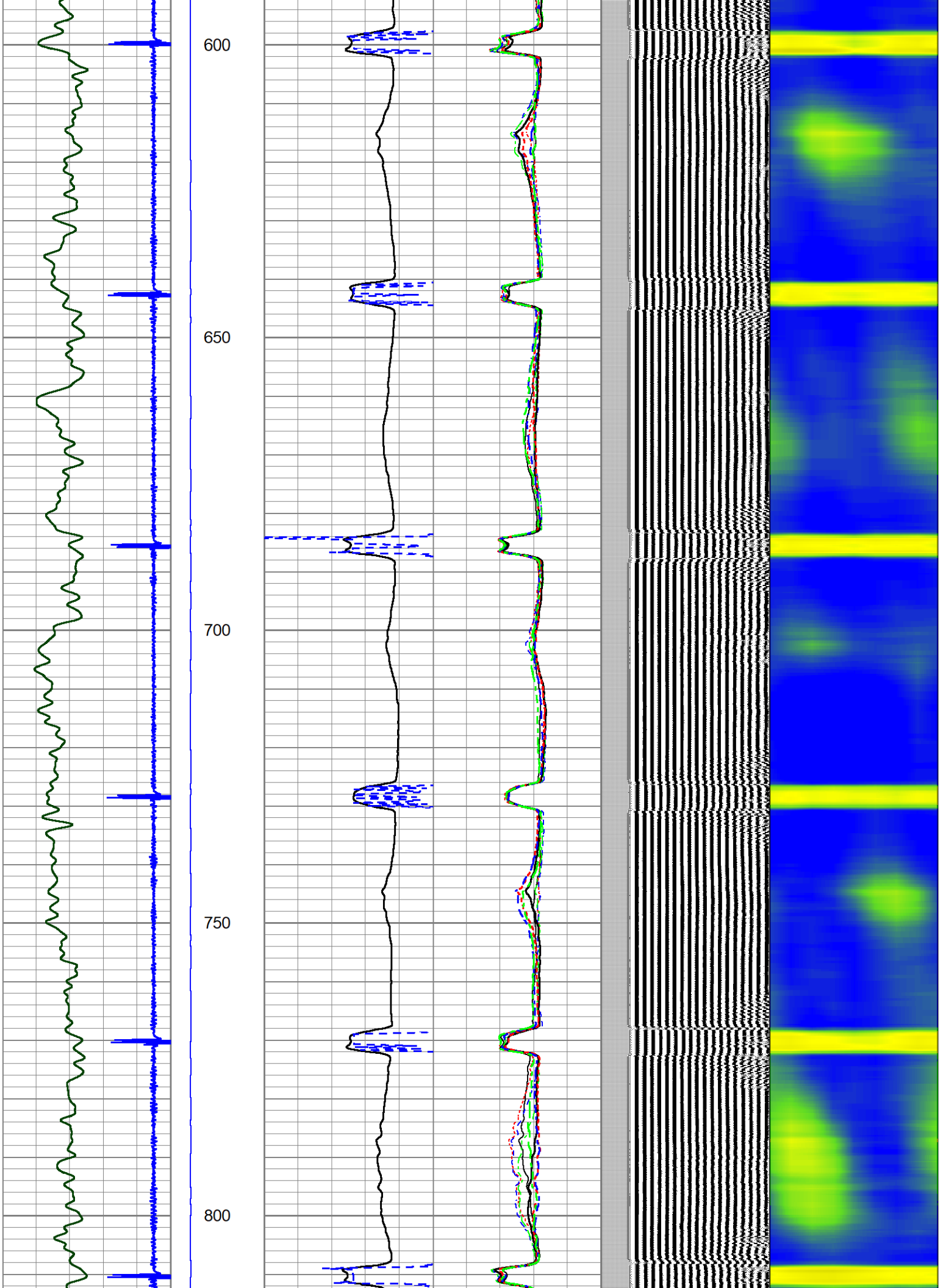
Database File 8-23-23.db
 Dataset Pathname pass5
 Presentation Format prb_rbt8
 Dataset Creation Wed Aug 23 07:53:45 2023
 Charted by Depth in Feet scaled 1:240

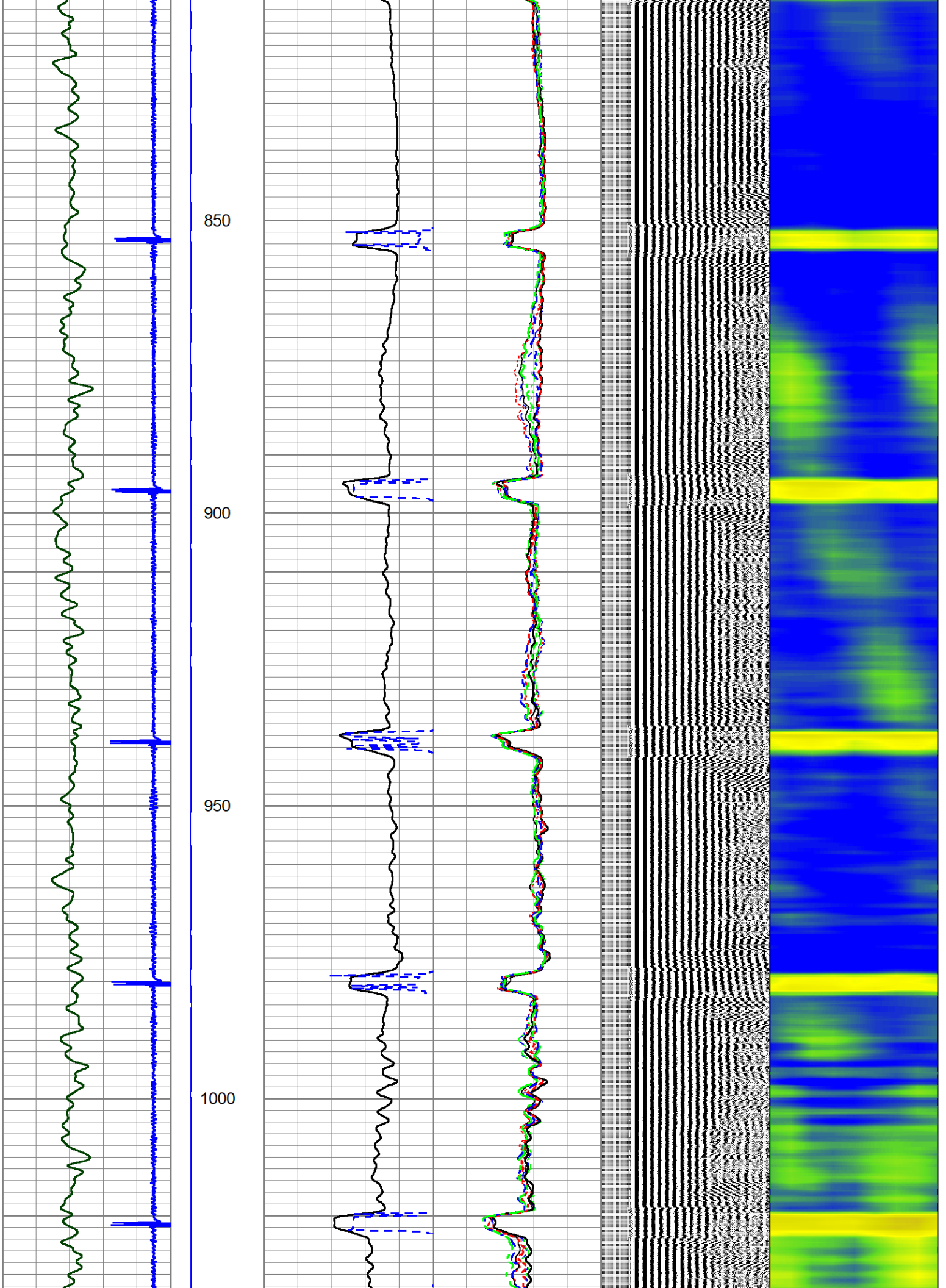
-9	CCL	1	LSPD	0	AMP (mV)	100	0	AMPS1	150	200	VDL (usec)	1200	1	Cement Map	8
0	GR (GAPI)	200	(ft/min)	0	AMPx10 (mV)	10	0	AMPS2	150						
			-100 100	350	TT (usec)	250	0	AMPS3	150						
							0	AMPS4	150						
							0	AMPS5	150						
							0	AMPS6	150						
							0	AMPS7	150						
							0	AMPS8	150						

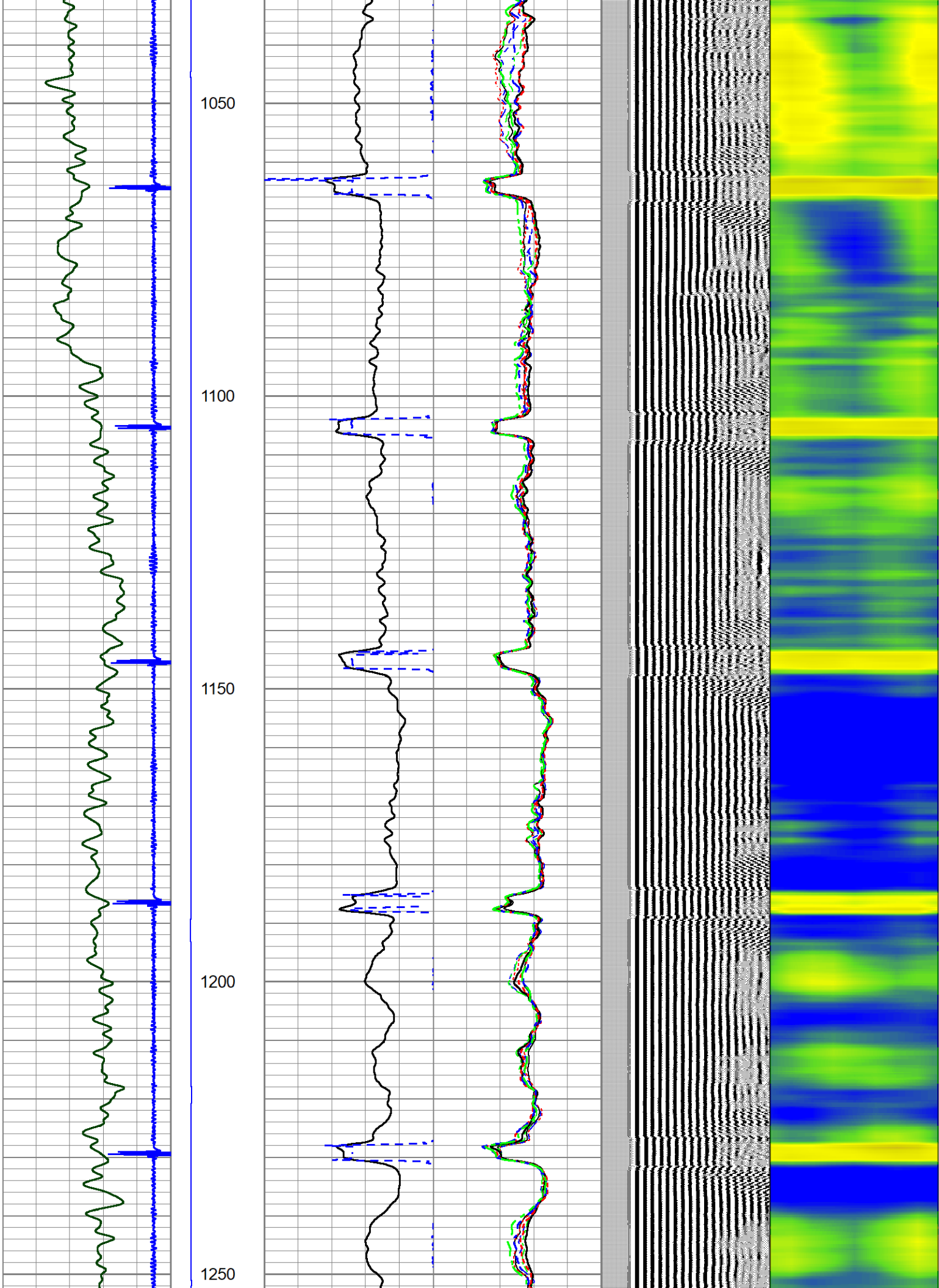


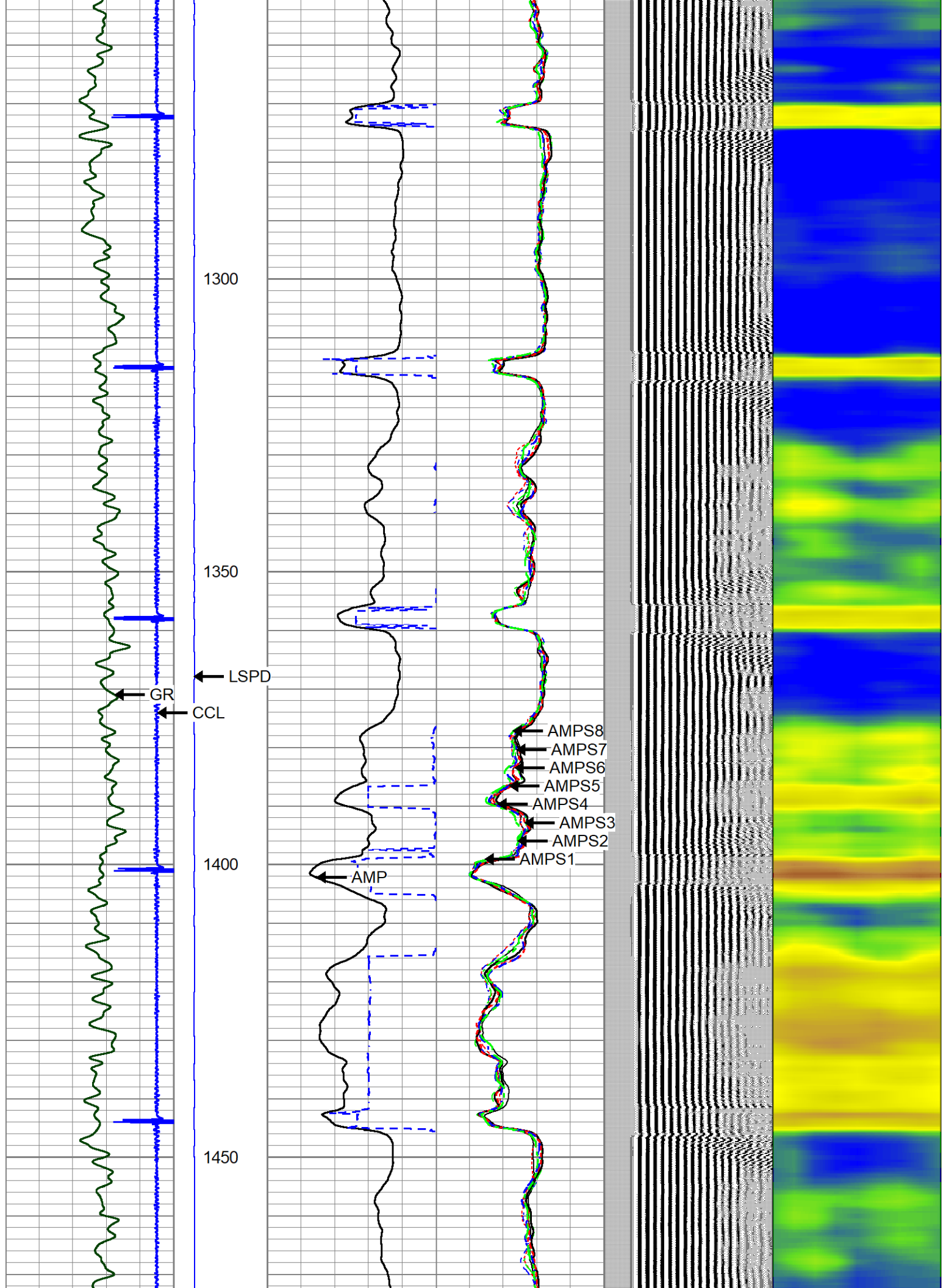


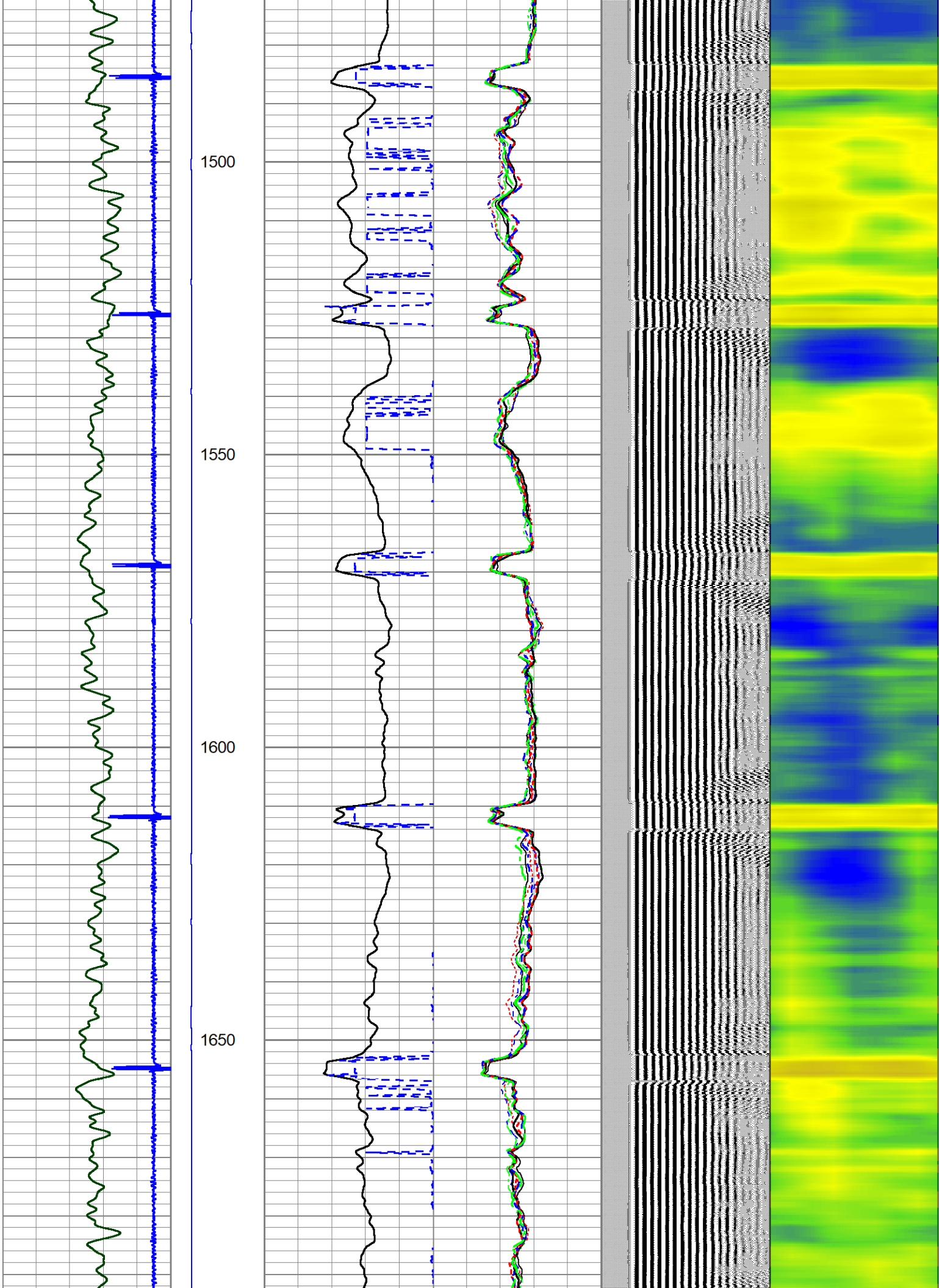


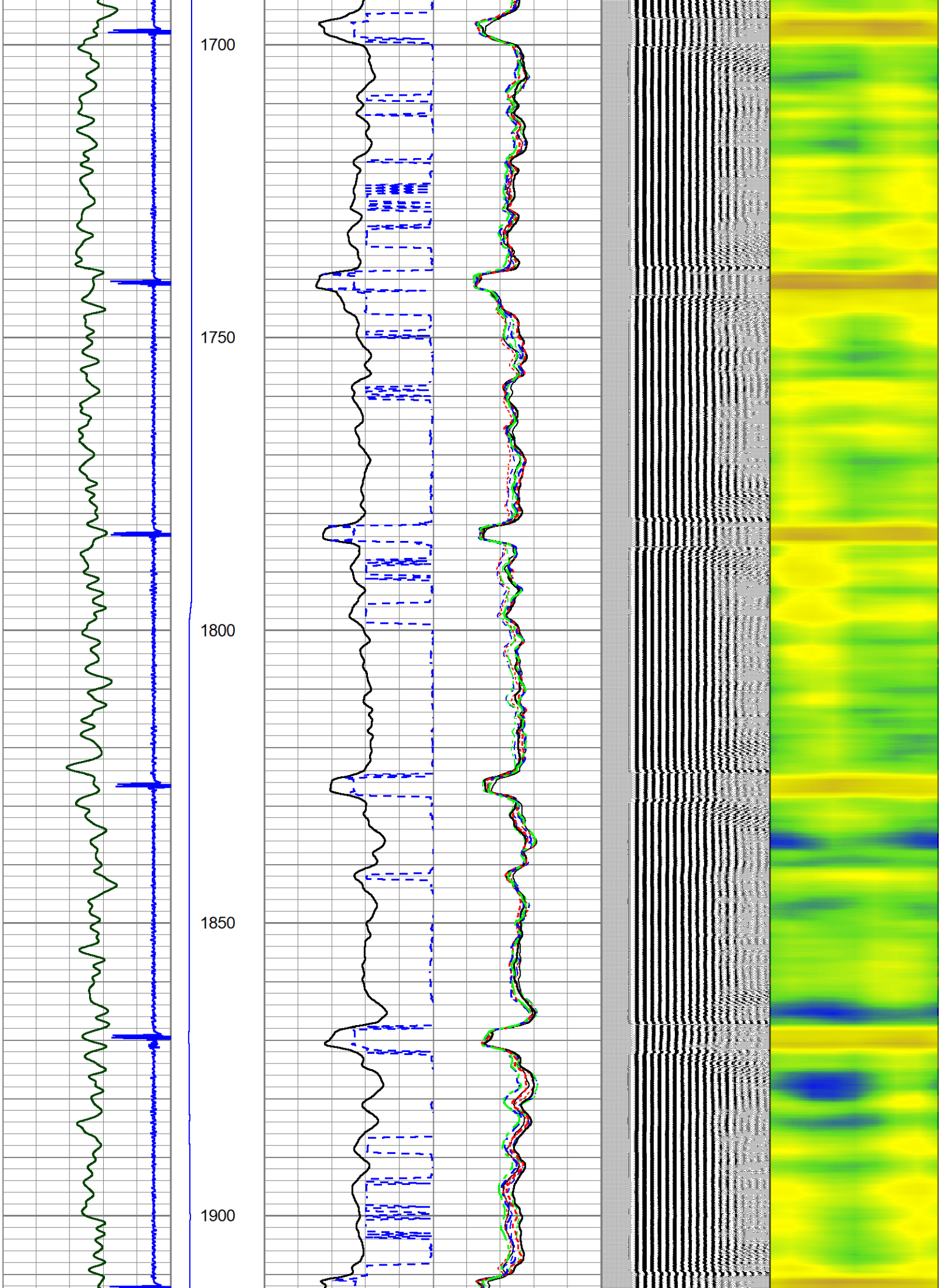


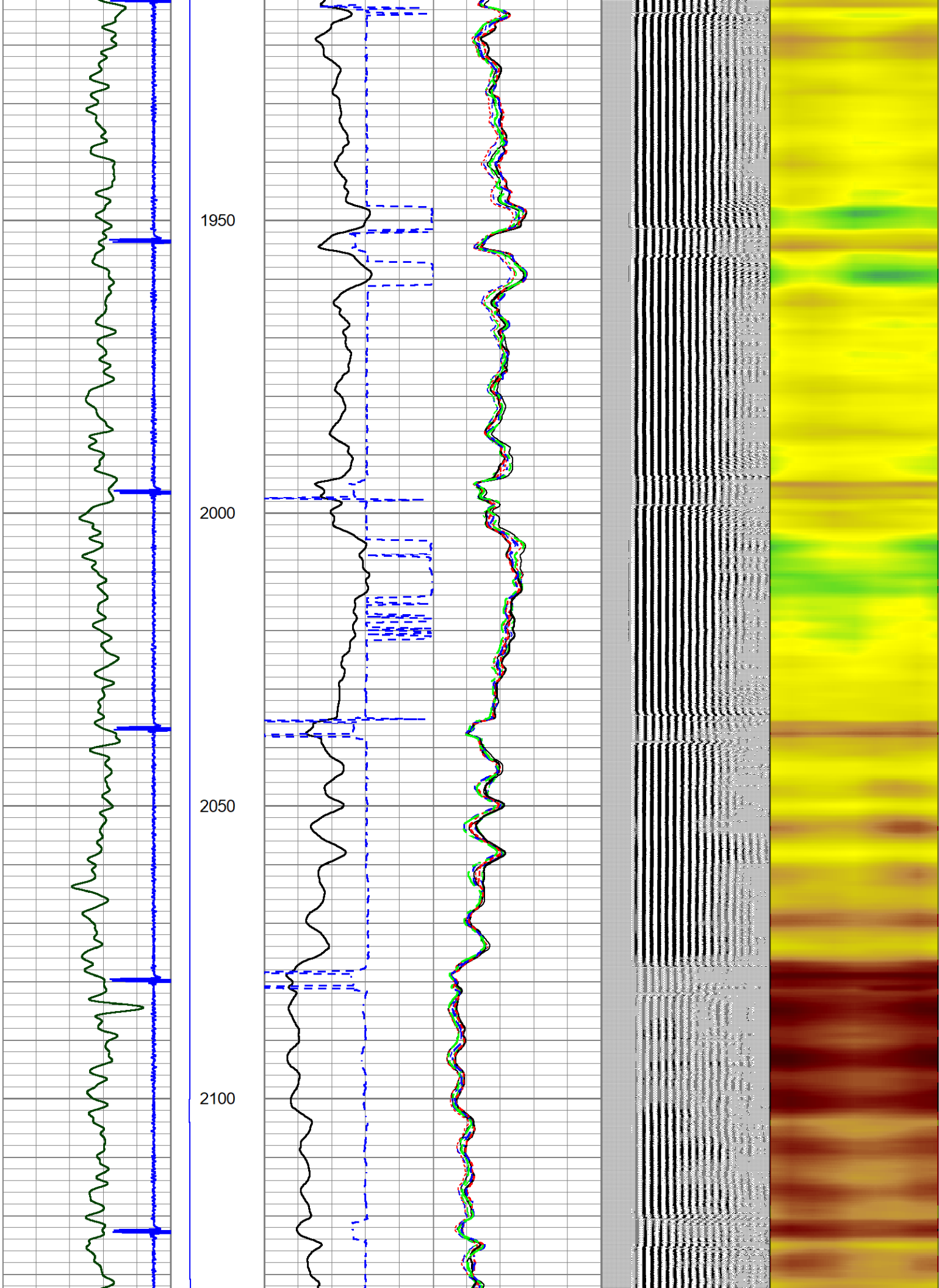












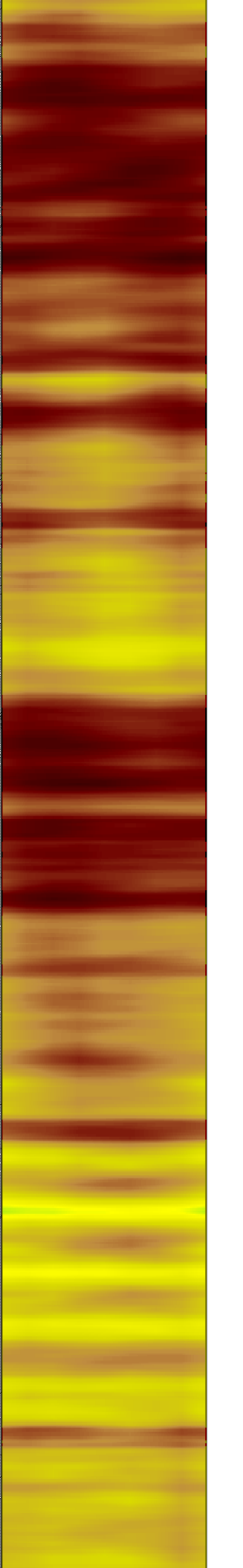
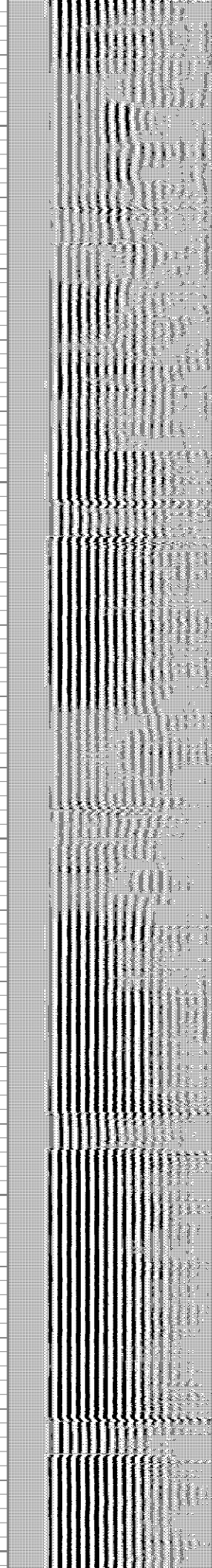
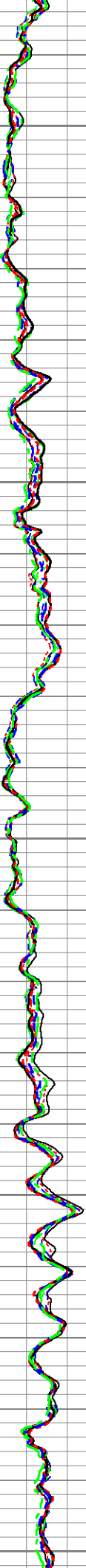
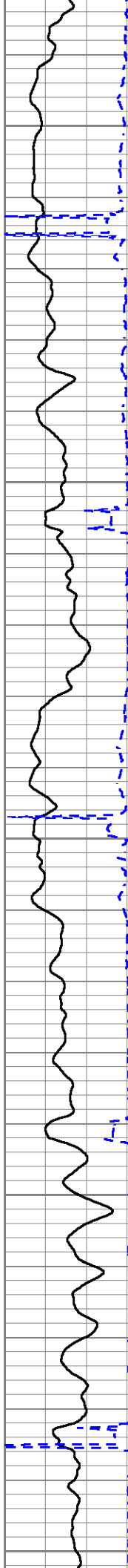
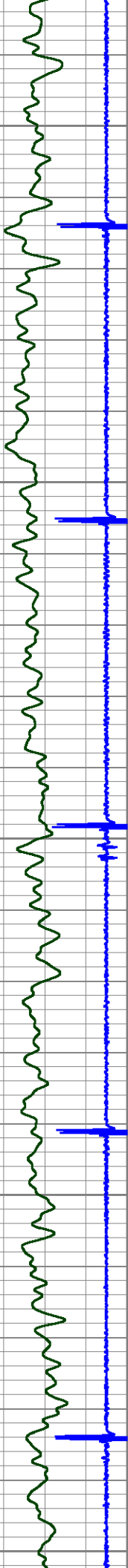
2150

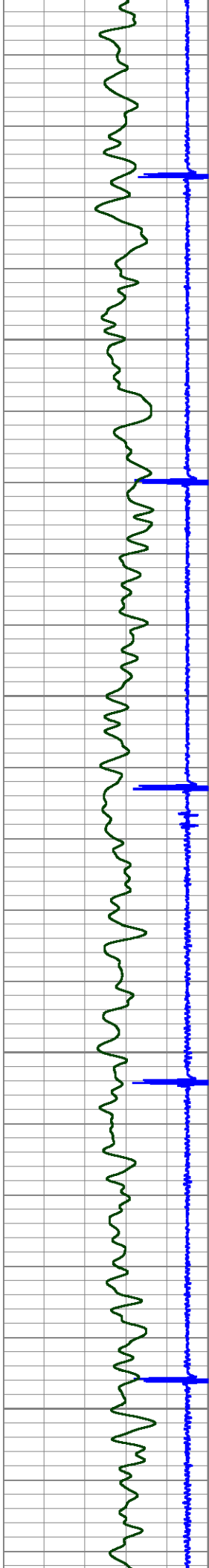
2200

2250

2300

2350



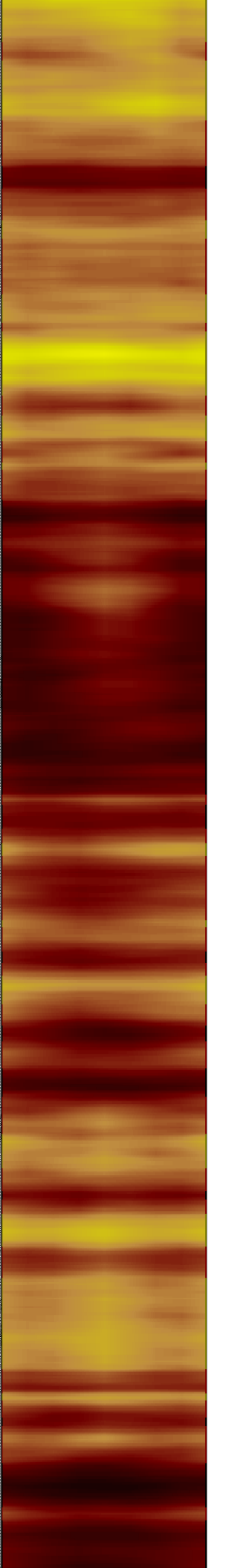
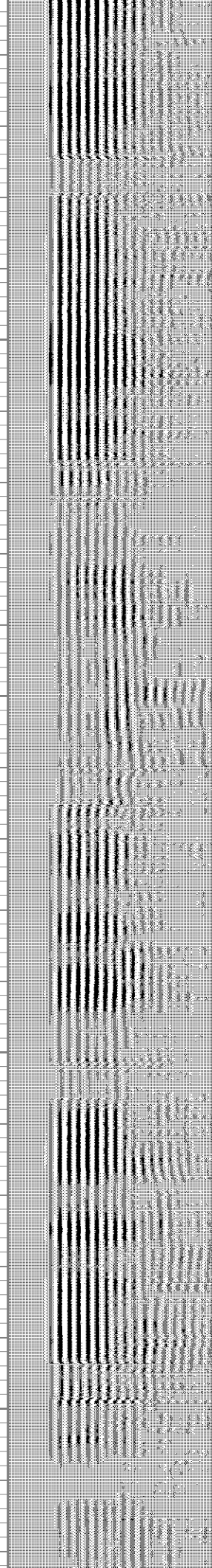
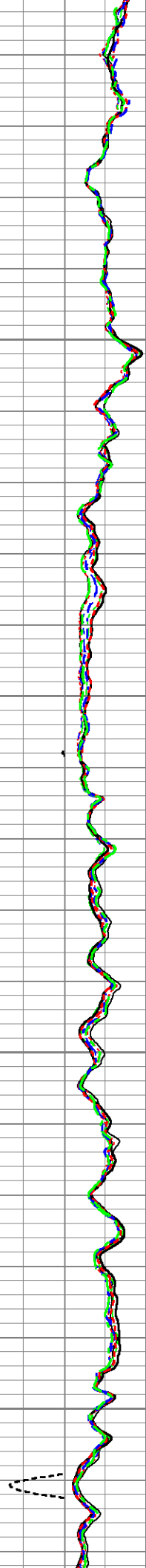
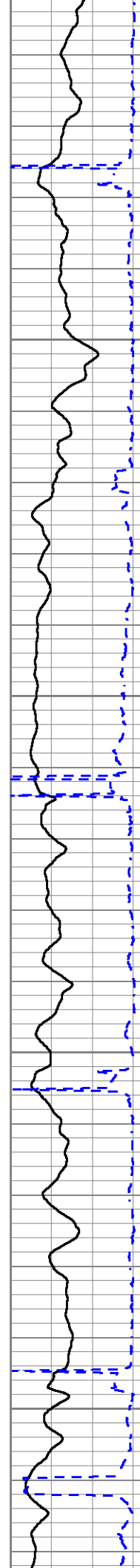


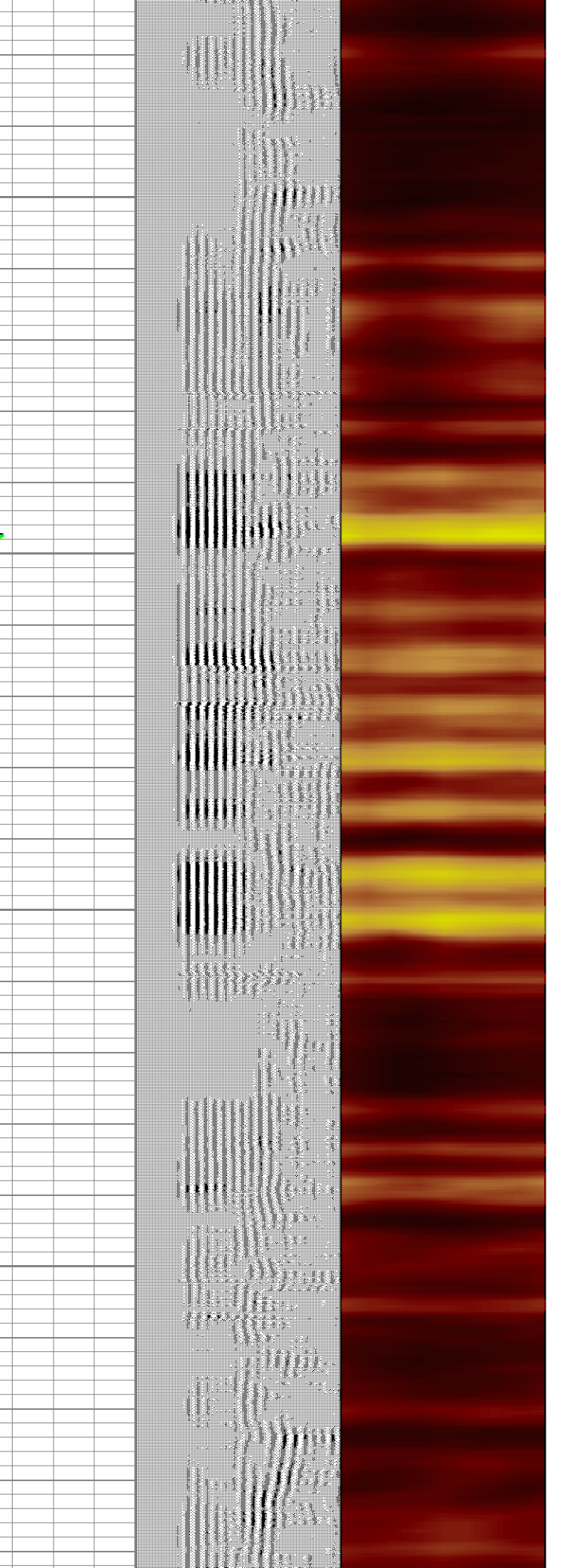
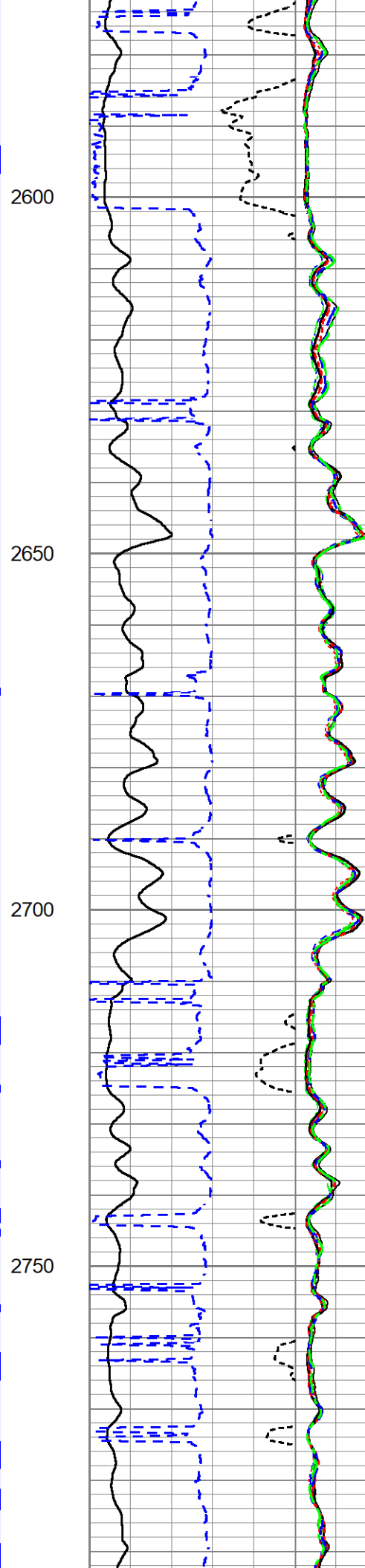
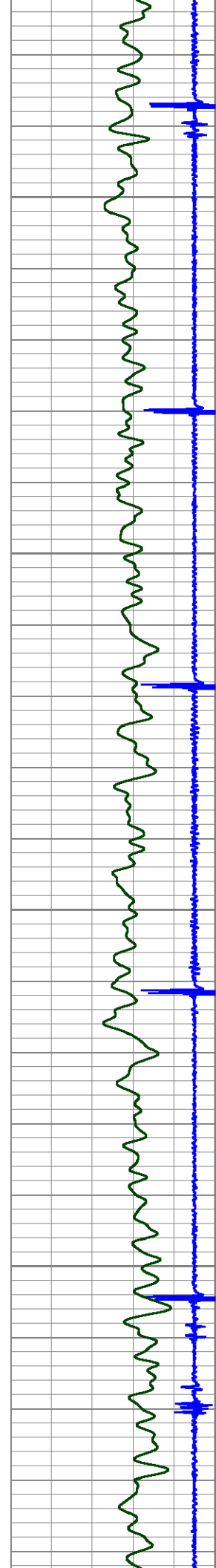
2400

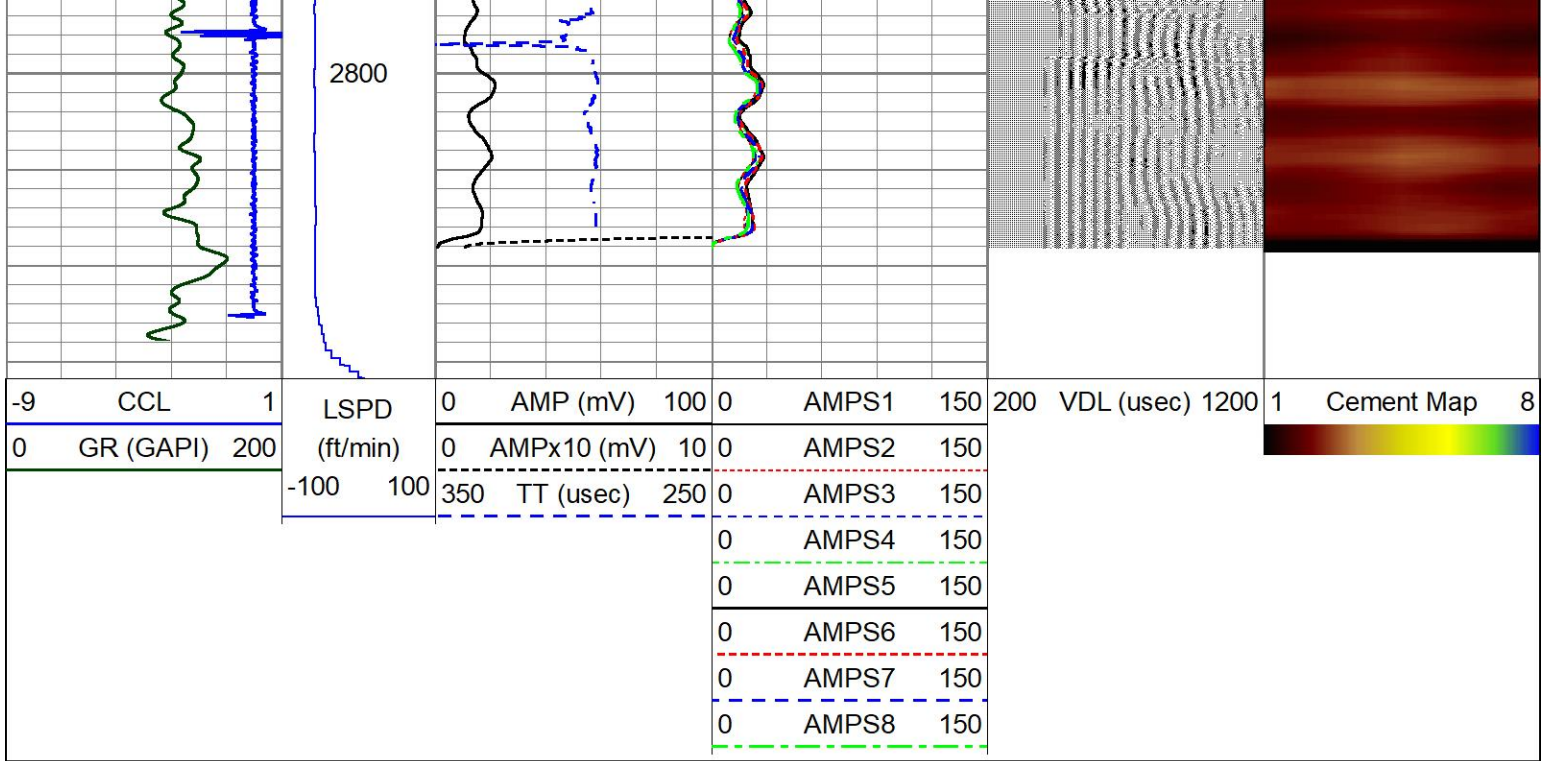
2450

2500

2550

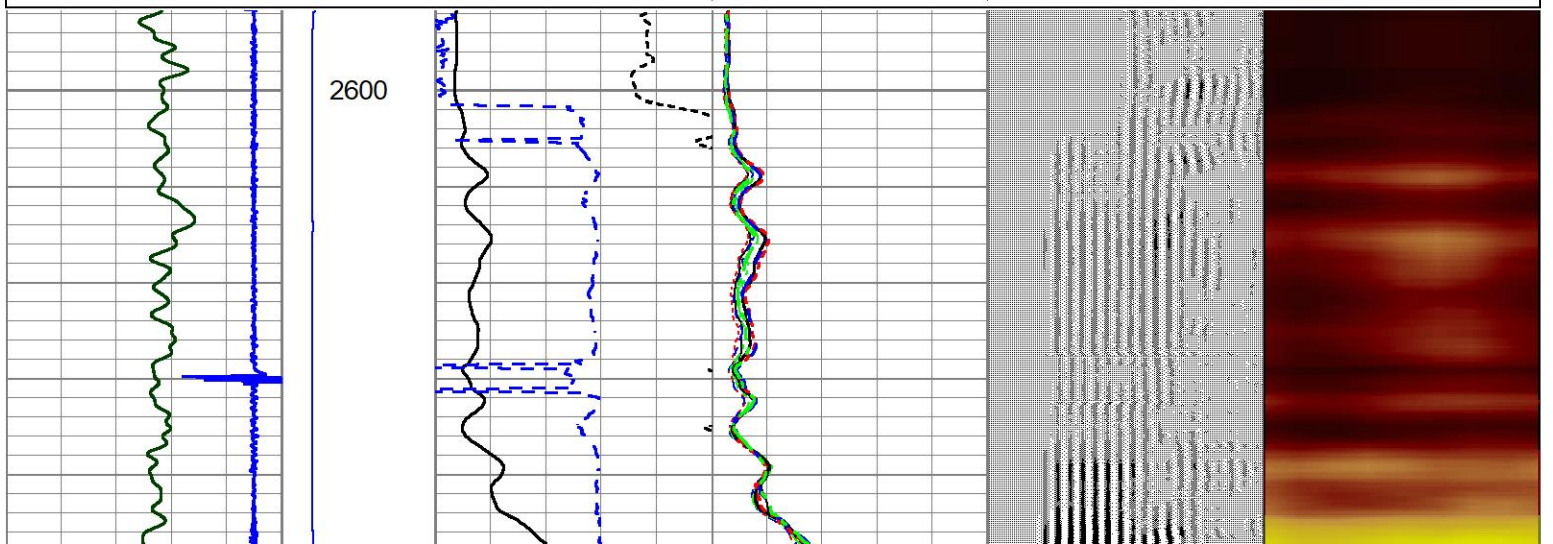
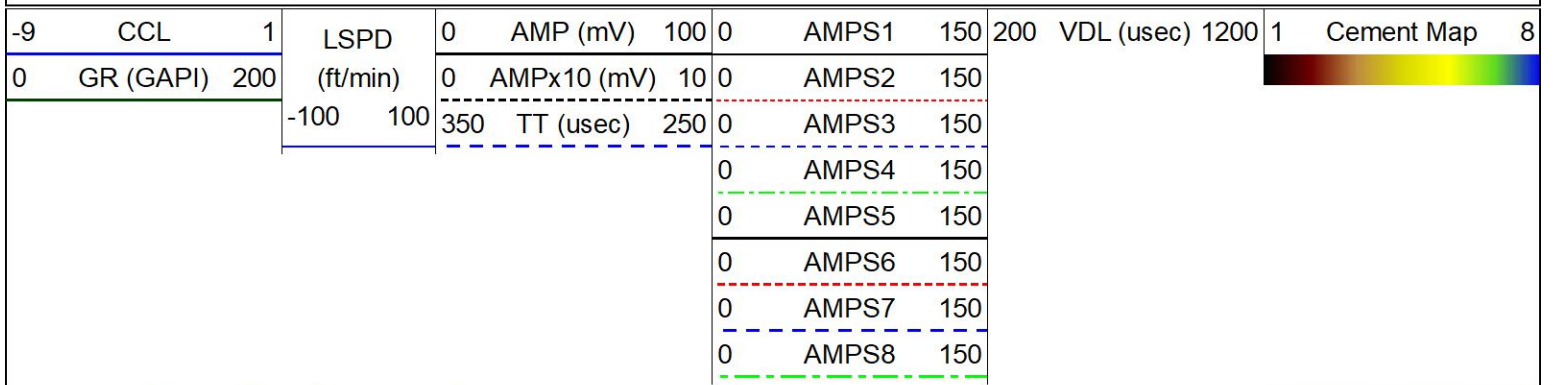


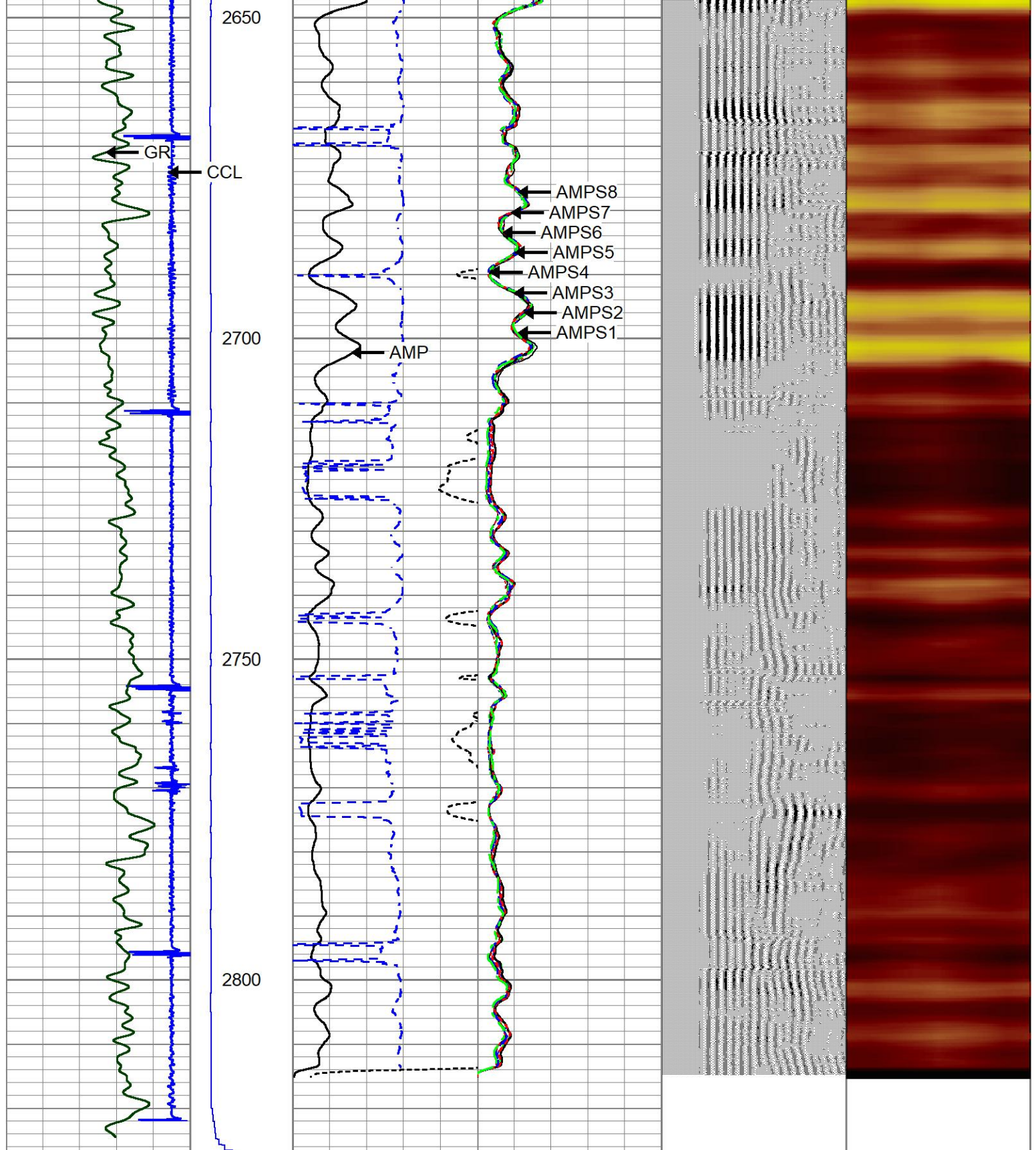




REPEAT PASS

Database File 8-23-23.db
 Dataset Pathname pass3
 Presentation Format prb_rbt8
 Dataset Creation Wed Aug 23 07:48:03 2023
 Charted by Depth in Feet scaled 1:240





-9	CCL	1	LSPD	0	AMP (mV)	100	0	AMPS1	150	200	VDL (usec)	1200	1	Cement Map	8
0	GR (GAPI)	200	(ft/min)	0	AMPx10 (mV)	10	0	AMPS2	150						
			-100	100	350	TT (usec)	250	0	AMPS3	150					
								0	AMPS4	150					
								0	AMPS5	150					
								0	AMPS6	150					
								0	AMPS7	150					
								0	AMPS8	150					

Calibration Report

Database File 8-23-23.db
 Dataset Pathname pass5
 Dataset Creation Wed Aug 23 07:53:45 2023

Gamma Ray Calibration Report

Serial Number: GCL004_base
 Tool Model: GCL004
 Performed: (Not Performed)

Calibrator Value: 1.0 GAPI

Background Reading: 0.0 cps
 Calibrator Reading: 1.0 cps

Sensitivity: 1.0000 GAPI/cps

Segmented Cement Bond Log Calibration Report

Serial Number: FW2001-30
 Tool Model: HTRCB-275

Calibration Casing Diameter: 4.500 in
 Calibration Depth: 371.165 ft

Master Calibration, performed Wed Aug 23 07:33:11 2023:

	Raw (v)		Calibrated (mv)		Results	
	Zero	Cal	Zero	Cal	Gain	Offset
3'	0.000	1.018	1.000	81.196	78.812	1.000
CAL	0.000	0.262				
5'	0.000	0.908	1.000	81.196	88.332	1.000
SUM						
S1	0.000	0.974	0.000	100.000	102.662	0.000
S2	0.000	1.000	0.000	100.000	99.998	0.000
S3	0.000	0.999	0.000	100.000	100.127	0.000
S4	0.000	1.014	0.000	100.000	98.662	0.000
S5	0.000	0.978	0.000	100.000	102.230	0.000
S6	0.000	1.031	0.000	100.000	96.979	0.000
S7	0.000	1.065	0.000	100.000	93.937	0.000
S8	0.000	1.047	0.000	100.000	95.516	0.000

Internal Reference Calibration, performed (Not Performed):

	Raw (v)		Calibrated (v)		Results	
	Zero	Cal	Zero	Cal	Gain	Offset
CAL	0.000	0.000	0.000	0.262	1.000	0.000

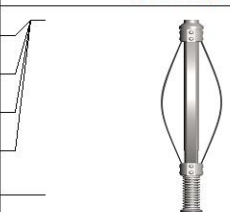
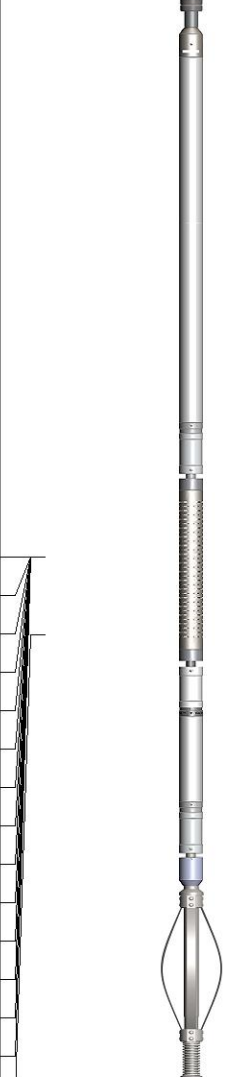
Air Zero Calibration, performed (Not Performed):

	Raw (v)		Calibrated (v)		Results	
	Zero		Zero		Offset	
3'	0.000		0.000			0.000
5'	0.000		0.000			0.000
SUM						
S1	0.000		0.000			0.000

S2	0.000	0.000	0.000
S3	0.000	0.000	0.000
S4	0.000	0.000	0.000
S5	0.000	0.000	0.000
S6	0.000	0.000	0.000
S7	0.000	0.000	0.000
S8	0.000	0.000	0.000

Inclinometer Calibration Report

Performed:	(Not Performed)				
	Low Read.	High Read.	Low Ref.	High Ref.	
X Accelerometer	0.00	1.00	0.00	1.00	gee
Y Accelerometer	0.00	1.00	0.00	1.00	gee
Z Accelerometer	0.00	1.00	0.00	1.00	gee

Sensor	Offset (ft)	Schematic	Description	Length (ft)	O.D. (in)	Weight (lb)
GCT_FMWR	24.36		CENT-BC275-0000 Probe 2.75" Bowspring Centralizer	2.83	2.75	24.00
mSec_Count	24.36					
RBT_Status	24.36					
Error_Ct	24.36					
RBT_HV	22.09					
RBT_ACCZ	14.69		RBT8-HTRCB-275 (FW2001-30) Probe 2.75" High Temperature RADII 8 Sector Bond Tool w/ external temperature	11.08	2.75	
RBT_ACCY	14.69					
RBT_ACCX	14.69					
WVFSYNC	14.69					
WVFS8	14.69					
WVFS7	14.69					
WVFS6	14.69					
WVFS5	14.69					
WVFS4	14.69					
WVFS3	14.69					
WVFS2	14.69					
WVFS1	14.69					
WVFCAL	14.69					
WVF3FT	14.69					
WVF5ET	13.69					

