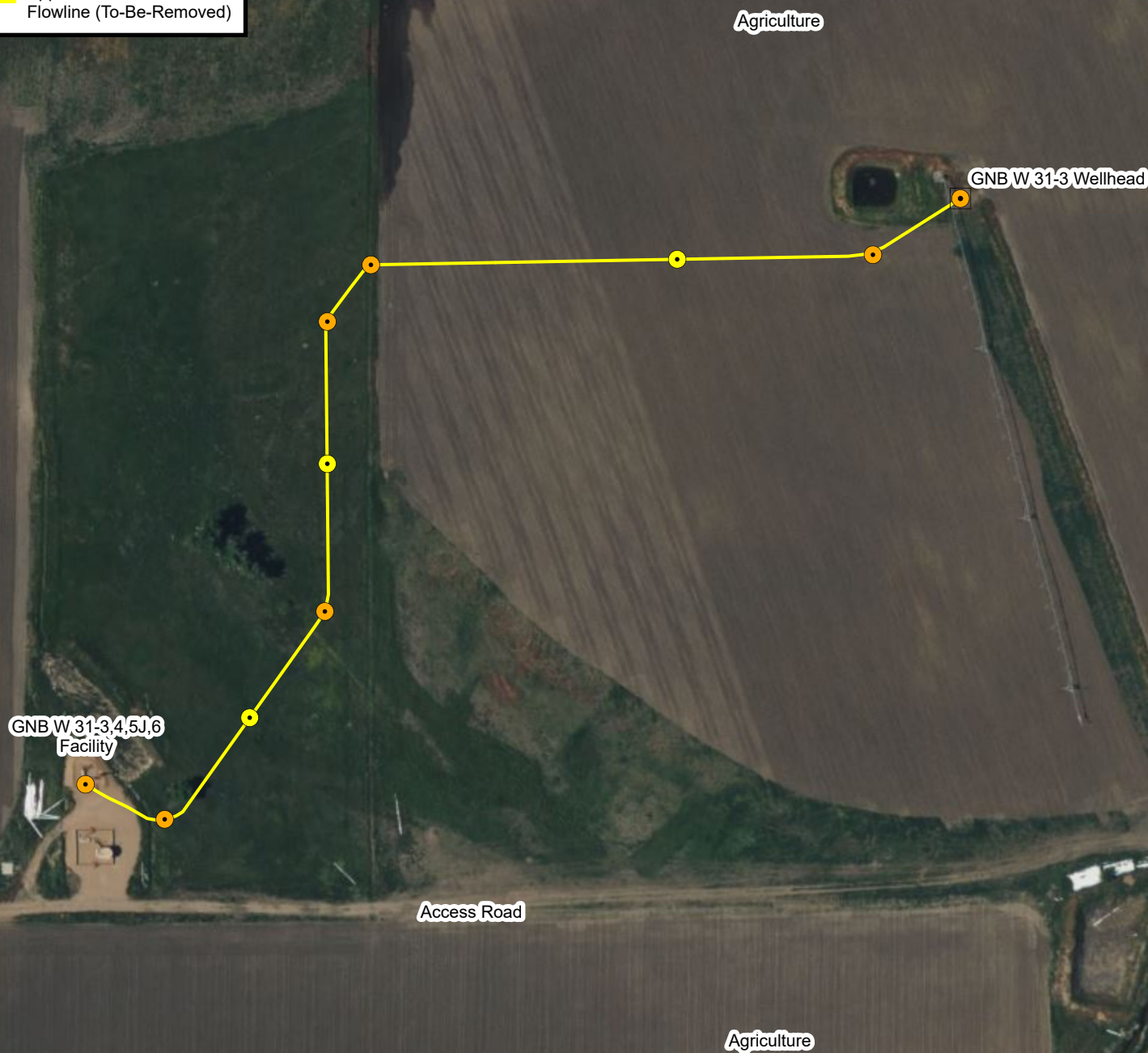


Legend

- Site Location
- Soil Screening
- Soil Sample
- Approximate Location of Flowline (To-Be-Removed)



Proposed Flowline Excavation and Soil Sampling Locations Map

GNB W 31-3 Wellhead
Kerr-McGee Oil & Gas Onshore, LP
NENW SEC 31-T2N-R66W
Weld County, CO

Project Number: 09A1417646

FIGURE

3

