

Carrier BCU 0993-16-07

Layout Drawings CECMC Rule 304.b.(7).B.



**Laramie Energy, LLC
760 Horizon Drive, Suite 101
Grand Junction, CO 81506**

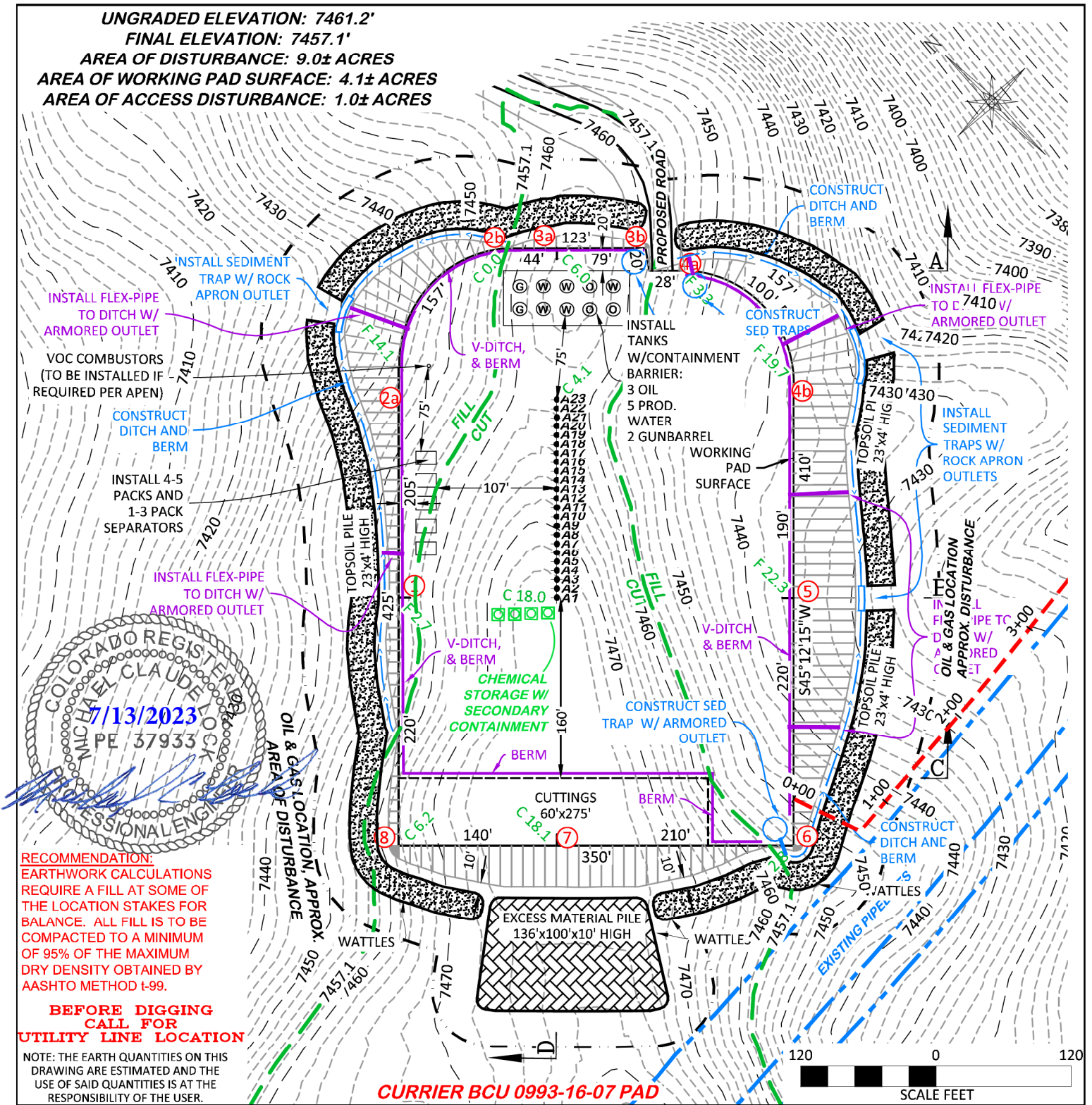
UNGRADED ELEVATION: 7461.2'

FINAL ELEVATION: 7457.1'

AREA OF DISTURBANCE: 9.0± ACRES

AREA OF WORKING PAD SURFACE: 4.1± ACRES

AREA OF ACCESS DISTURBANCE: 1.0± ACRES



RECOMMENDATION:
EARTHWORK CALCULATIONS REQUIRE A FILL AT SOME OF THE LOCATION STAKES FOR BALANCE. ALL FILL IS TO BE COMPACTED TO A MINIMUM OF 95% OF THE MAXIMUM DRY DENSITY OBTAINED BY AASHTO METHOD T-99.

BEFORE DIGGING CALL FOR UTILITY LINE LOCATION

NOTE: THE EARTH QUANTITIES ON THIS DRAWING ARE ESTIMATED AND THE USE OF SAID QUANTITIES IS AT THE RESPONSIBILITY OF THE USER.

CURRIER BCU 0993-16-07 PAD

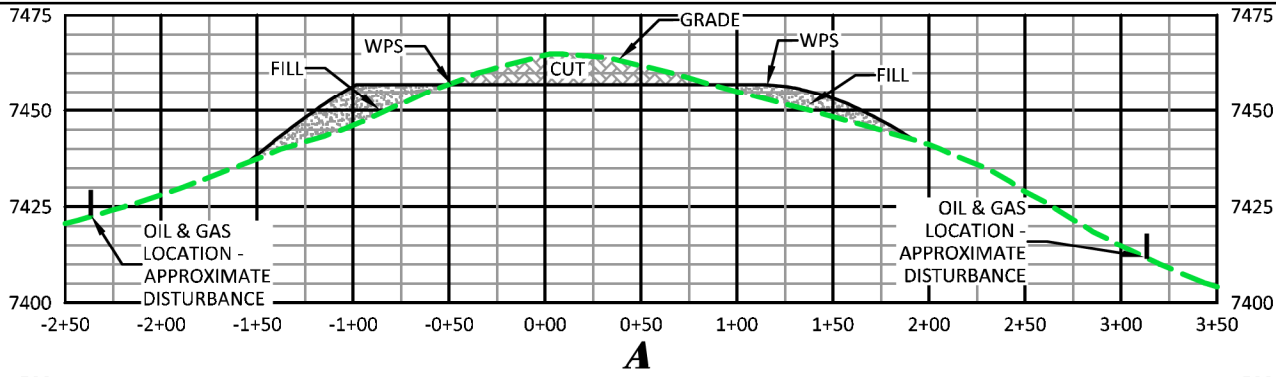
ESTIMATED EARTHWORK BANK					ESTIMATED EARTHWORK LOOSE (10% SWELL)				
ITEM	TOPSOIL	CUT	FILL	EXCESS	ITEM	TOPSOIL	CUT	FILL	EXCESS
PAD	4,063 BCY	35,757 BCY	36,267 BCY	(-510 BCY)	PAD	4,469 BCY	39,333 LCY	36,267 LCY	3,066 LCY
PIT		NONE		NONE	PIT		NONE		NONE
TOTALS	4,063 BCY	35,757 BCY	36,267 BCY	(-510 BCY)	TOTALS	4,469 BCY	39,333 LCY	36,267 LCY	3,066 LCY

LAYOUT DRAWING 1 OF 7

DRG RIFFIN & ASSOCIATES, INC.
 (307) 362-5028 1414 ELK ST., ROCK SPRINGS, WY 82901

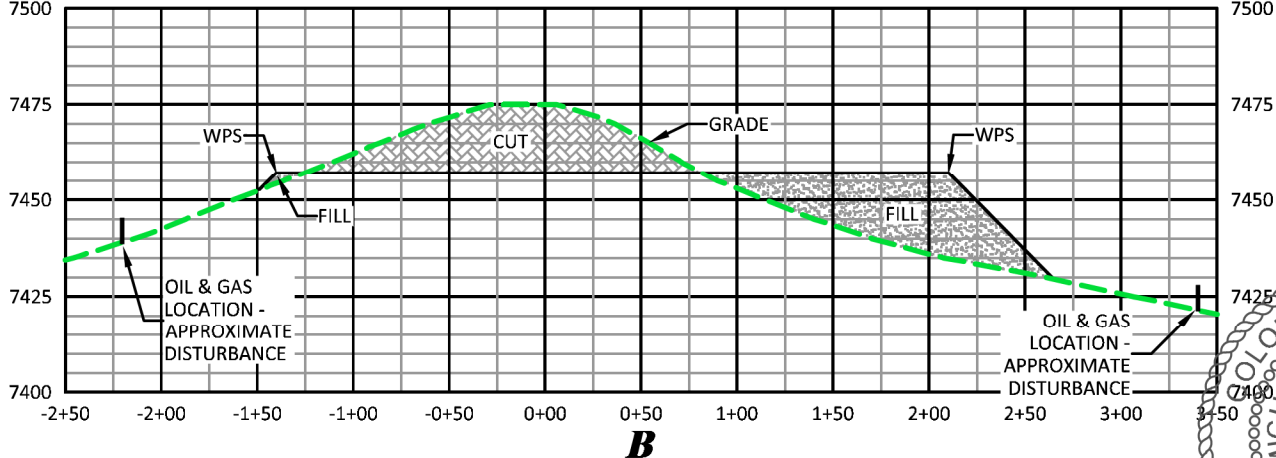
DRAWN: 7/5/2023 - DEH SCALE: 1" = 120'
 REVISED: N/A DRG JOB No. 22254
 304b(7)Bi CONST

**CONSTRUCTION LAYOUT DRAWING
 ESTIMATED EARTHWORK
 LARAMIE ENERGY, LLC
 CURRIER BCU 0993-16-07
 SWNE, SECTION 16, T.9 S., R.93 W., 6th P.M.,
 MESA COUNTY, COLORADO**

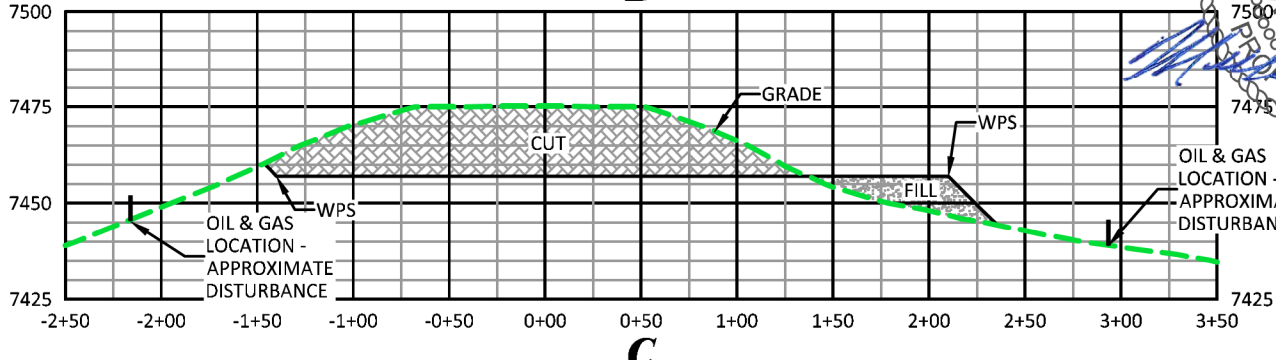


RECOMMENDATION:
EARTHWORK CALCULATIONS REQUIRE A FILL AT SOME OF THE LOCATION STAKES FOR BALANCE. ALL FILL IS TO BE COMPACTED TO A MINIMUM OF 95% OF THE MAXIMUM DRY DENSITY OBTAINED BY AASHTO METHOD T-99.

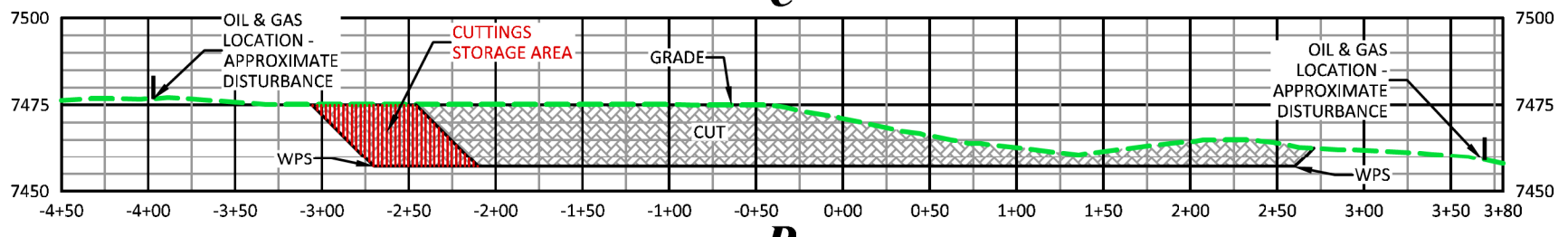
A



B



C



D

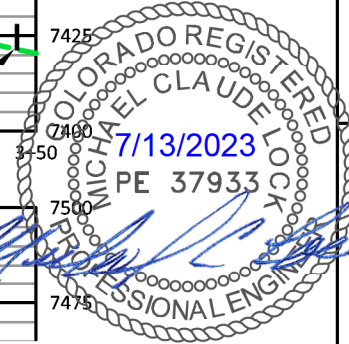
FILL SLOPES 2:1

CURRIER BCU 0993-16-07 PAD

CUT SLOPES 2:1

LAYOUT DRAWING 2 OF 7

**CONSTRUCTION LAYOUT DRAWING
CROSS SECTIONS
LARAMEE ENERGY, LLC
CURRIER BCU 0993-16-07
SWNE, SECTION 16, T.9 S., R.93 W., 6th P.M.,
MESA COUNTY, COLORADO**



DRG RIFFIN & ASSOCIATES, INC.
1414 ELK ST., ROCK SPRINGS, WY 82901

(307) 362-5028	DRAWN: 7/5/2023 - DEH	SCALE: H - 1" = 100' V - 1" = 50'
	REVISED: N/A	DRG JOB No. 22254
		304b(7)BI XSEC

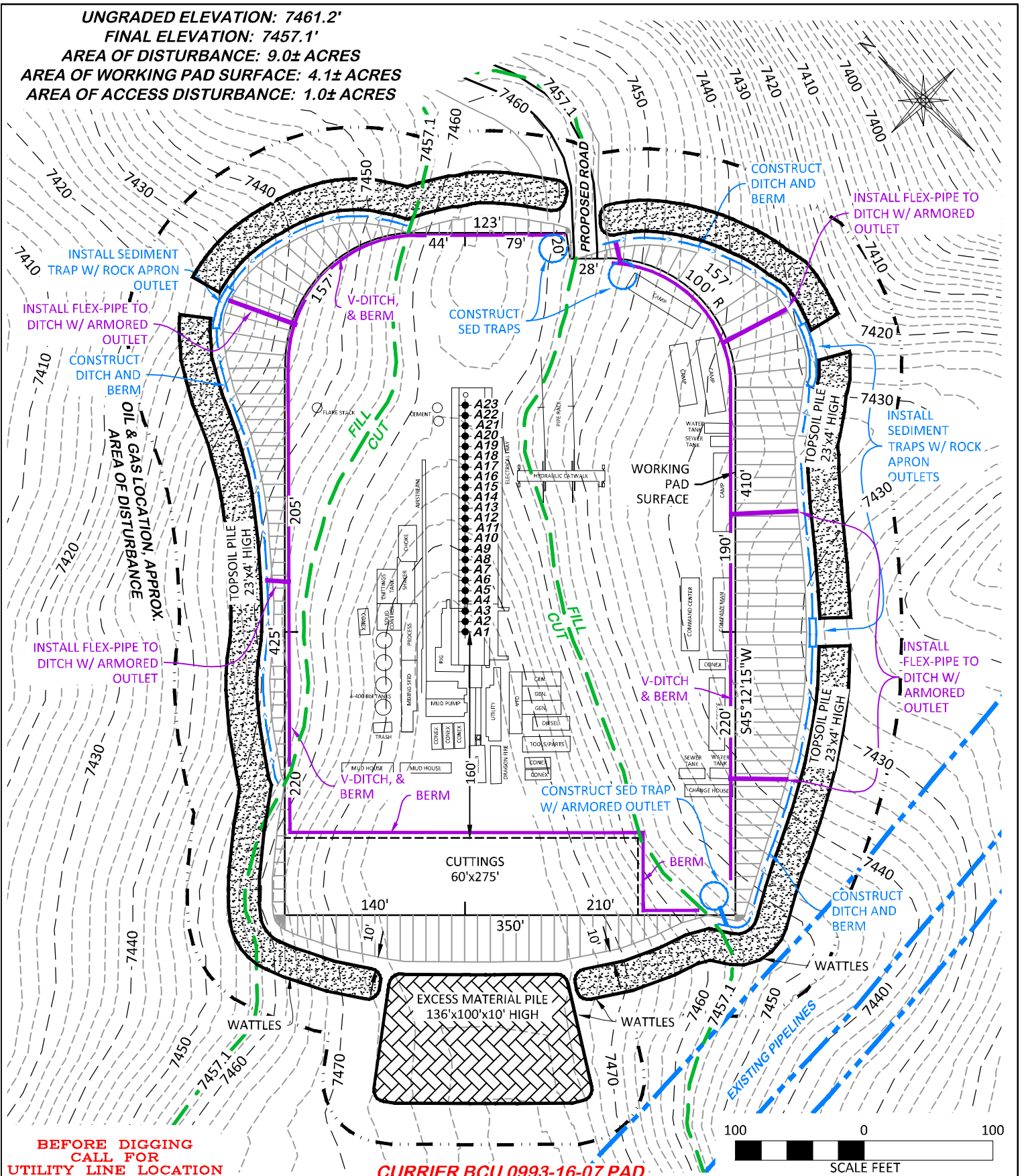
UNGRADED ELEVATION: 7461.2'

FINAL ELEVATION: 7457.1'

AREA OF DISTURBANCE: 9.0± ACRES

AREA OF WORKING PAD SURFACE: 4.1± ACRES

AREA OF ACCESS DISTURBANCE: 1.0± ACRES



**BEFORE DIGGING
CALL FOR
UTILITY LINE LOCATION**

CURRIER BCU 0993-16-07 PAD



DRG RIFFIN & ASSOCIATES, INC.

(307) 362-5028

1414 ELK ST., ROCK SPRINGS, WY 82901

DRAWN: 7/5/2023 - DEH

SCALE: 1" = 100'

REVISED: N/A

DRG JOB No. 22254

304b(7)Bii RIG

LAYOUT DRAWING 3 OF 7

PRELIMINARY RIG LAYOUT

LARAMIE ENERGY, LLC

CURRIER BCU 0993-16-07

SWNE, SECTION 16, T. 9 S., R. 93 W., 6th P.M.,

MESA COUNTY, COLORADO

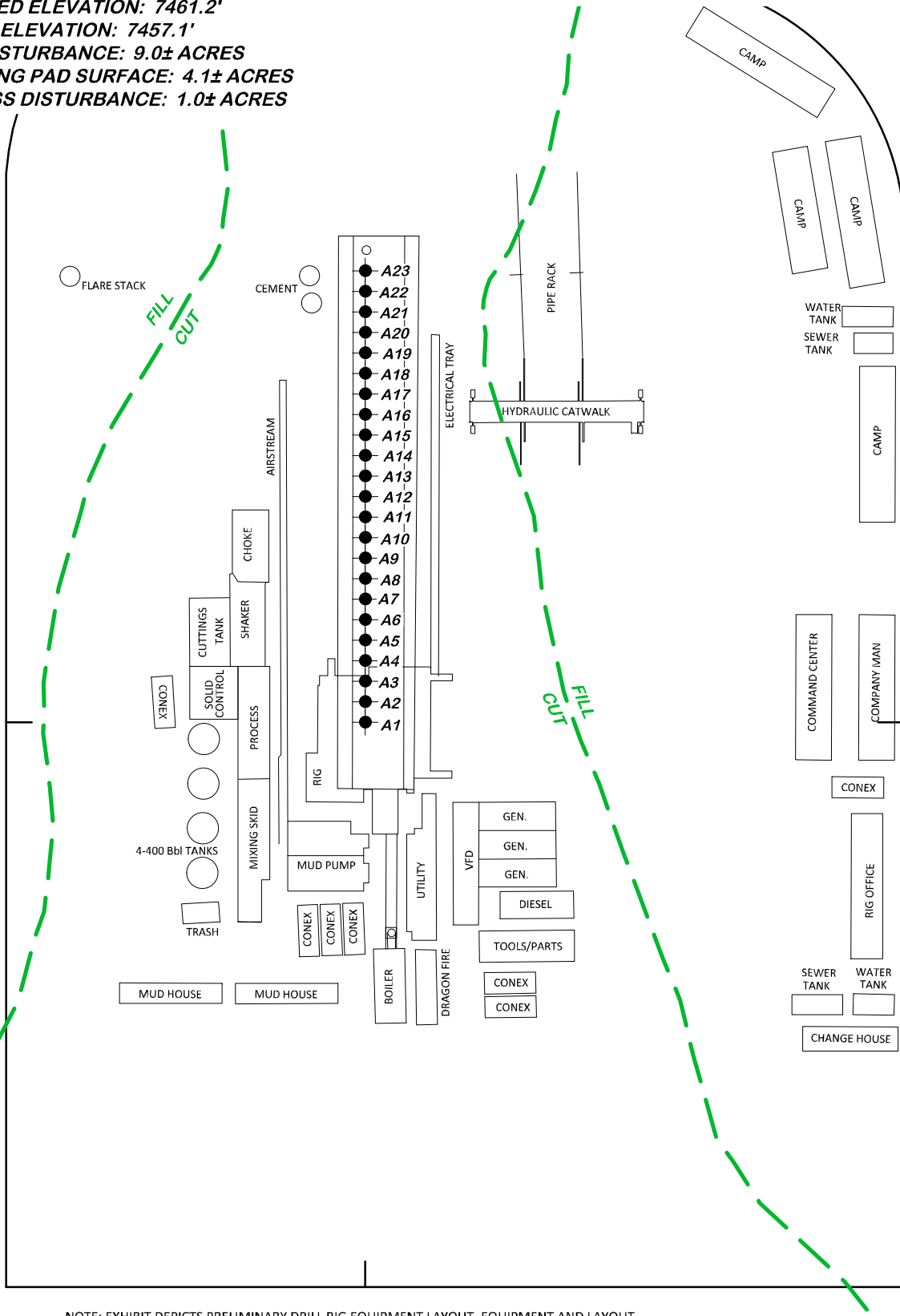
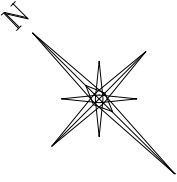
UNGRADED ELEVATION: 7461.2'

FINAL ELEVATION: 7457.1'

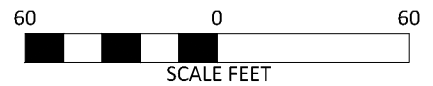
AREA OF DISTURBANCE: 9.0± ACRES

AREA OF WORKING PAD SURFACE: 4.1± ACRES

AREA OF ACCESS DISTURBANCE: 1.0± ACRES



NOTE: EXHIBIT DEPICTS PRELIMINARY DRILL RIG EQUIPMENT LAYOUT. EQUIPMENT AND LAYOUT ARE SUBJECT TO CHANGE DEPENDING ON EQUIPMENT AVAILABILITY AND SITE CONDITIONS.



**BEFORE DIGGING
CALL FOR
UTILITY LINE LOCATION**

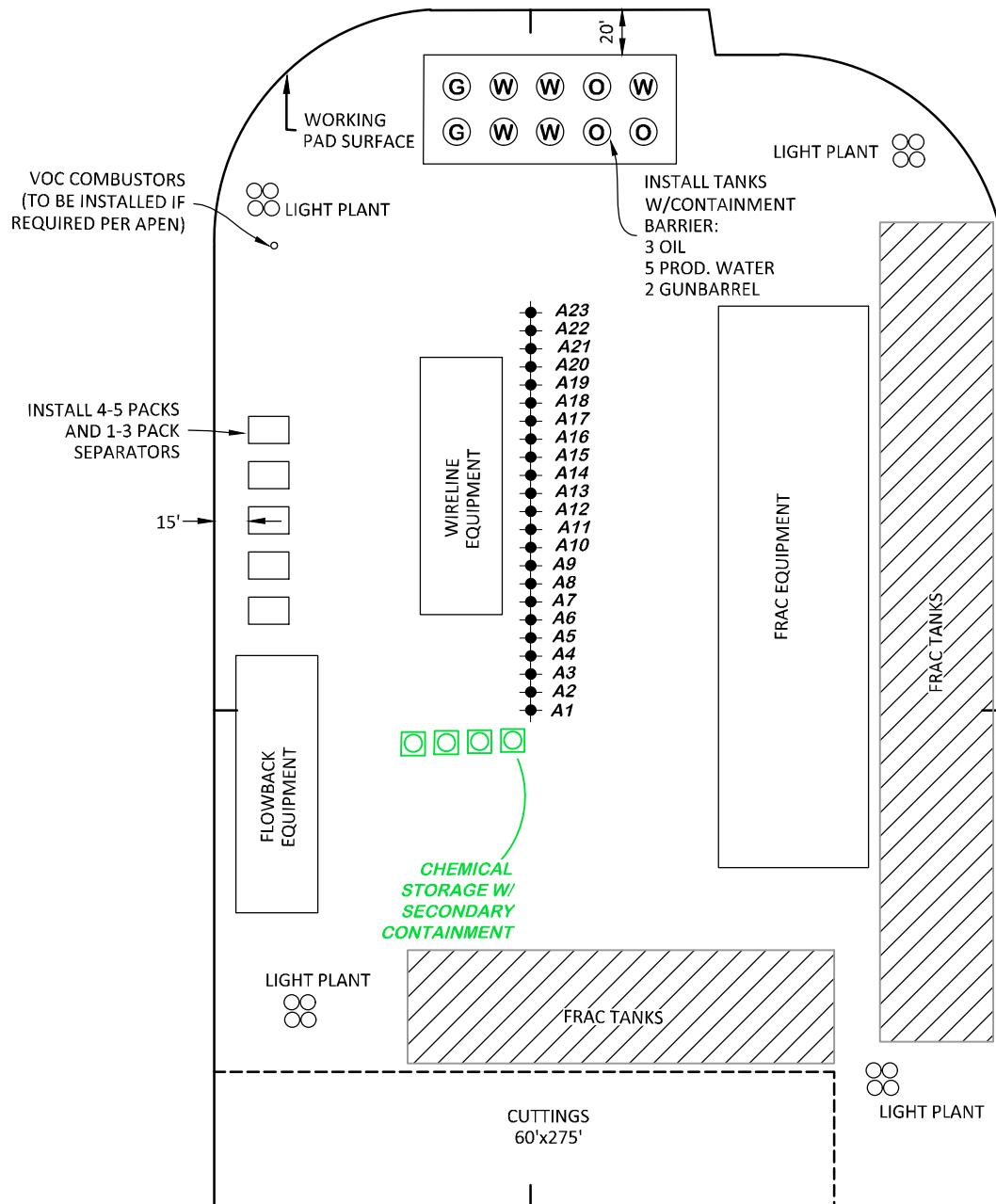
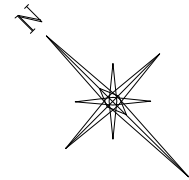
CURRIER BCU 0993-16-07 PAD

DRG RIFFIN & ASSOCIATES, INC.
 (307) 362-5028 1414 ELK ST., ROCK SPRINGS, WY 82901

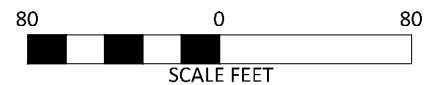
DRAWN: 7/5/2023 - DEH	SCALE: 1" = 60'
REVISED: N/A	DRG JOB No. 22254
	304b(7)Bii RIG DET

LAYOUT DRAWING 4 OF 7

**RIG DETAIL
 LARAMIE ENERGY, LLC
 CURRIER BCU 0993-16-07
 SWNE, SECTION 16, T. 9 S., R. 93 W., 6th P.M.,
 MESA COUNTY, COLORADO**



- NOTES:**
1. COMPLETIONS AND FLOWBACK OPERATIONS WILL BE CONDUCTED CONCURRENTLY.
 2. EXHIBIT DEPICTS PRELIMINARY FRAC AND FLOWBACK EQUIPMENT LAYOUT. EQUIPMENT AND LAYOUT ARE SUBJECT TO CHANGE DEPENDING ON EQUIPMENT AVAILABILITY AND SITE CONDITIONS.
 3. SIXTY (60) FRAC TANKS. CAPACITY PER FRAC TANK: 500 BBLs. TOTAL FRAC TANK CAPACITY (60 FRAC TANKS): 30,000 BBLs.
 4. EQUIPMENT LOCATED WITHIN THE "FRAC EQUIPMENT" ENVELOPE: HYDRAULIC STIMULATION CONTROL TRAILER, DIESEL FRAC PUMPS, CHARGE PUMP, AND TEMPORARY CHEMICAL STORAGE
 5. EACH LIGHT PLANT IS A SELF-CONTAINED UNIT WITH A GENERATOR AND AUXILIARY POWER SOURCE.
 6. ACTUAL WATER LINE AND WATER PUMP PLACEMENT DEPENDENT ON PRE-COMPLETION ALIGNMENT OF FRAC TANKS.
 7. OPERATOR WILL UTILIZE HEAT PUMPS FOR WINTER OPERATIONS BASED ON LOCATION SPACING.
 8. FLOWBACK SUPPORT TRAILER IS LOCATED WITHIN "FLOWBACK SEPARATORS" ENVELOPE.
 9. PLEASE REFER TO THE CONSTRUCTION LAYOUT DRAWING FOR STORMWATER CONTROL MEASURES.



CURRIER BCU 0993-16-07 PAD

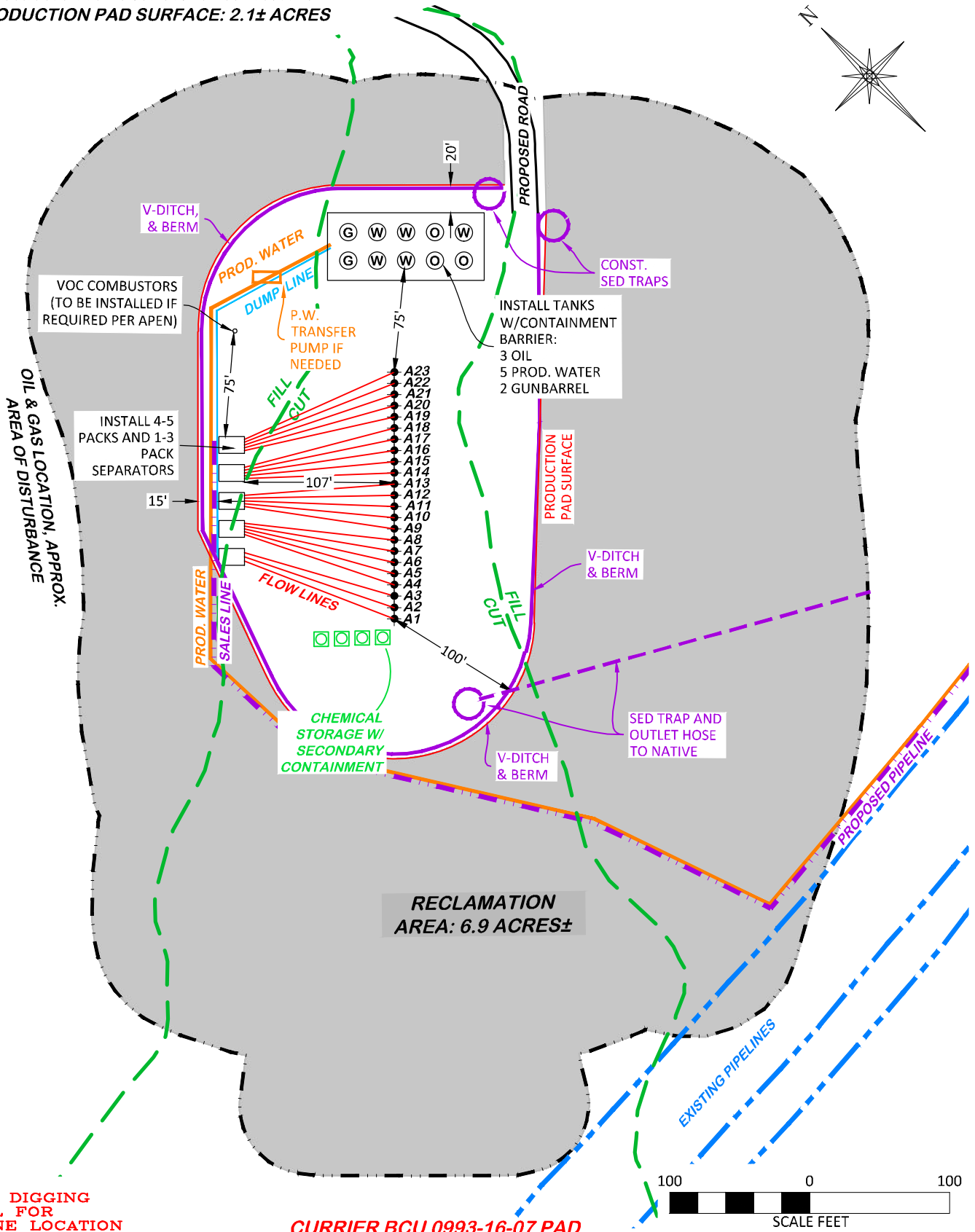
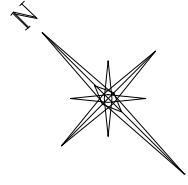
LAYOUT DRAWING 5 OF 7

**PRELIMINARY WELL COMPLETIONS AND
STIMULATION LAYOUT
LARAMIE ENERGY, LLC
CURRIER BCU 0993-16-07
SWNE, SECTION 16, T.9 S., R.93 W., 6th P.M.,
MESA COUNTY, COLORADO**



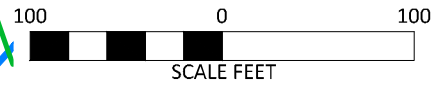
DRAWN: 6/28/2023 - DEH	SCALE: 1" = 80'
REVISED: N/A	DRG JOB No. 22254
	304b(7)Biii COMP

FINAL ELEVATION: 7457.1'
AREA OF WORKING PAD SURFACE: 4.1± ACRES
AREA OF PRODUCTION PAD SURFACE: 2.1± ACRES



**BEFORE DIGGING
CALL FOR
UTILITY LINE LOCATION**

CURRIER BCU 0993-16-07 PAD



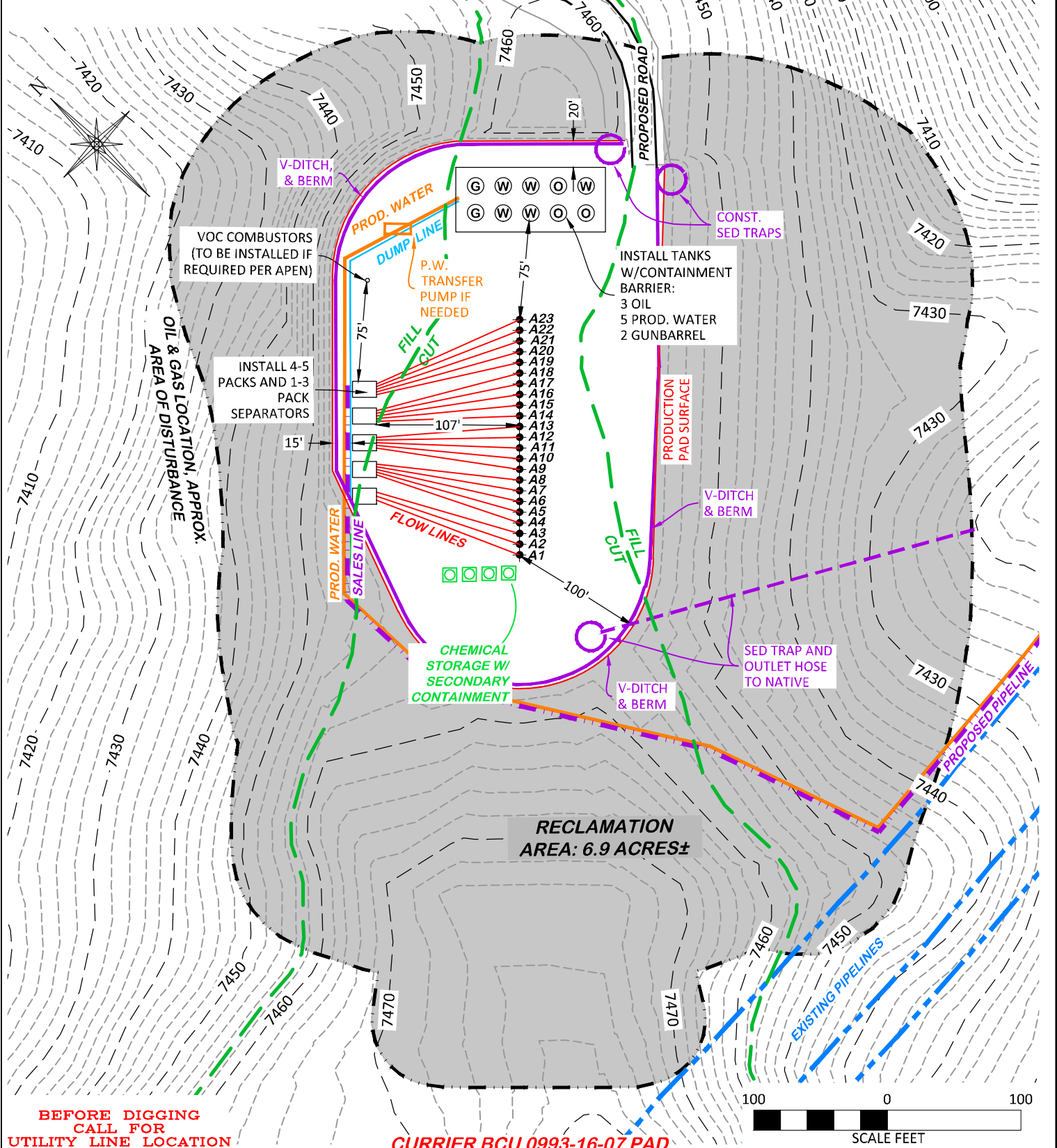
DRG RIFFIN & ASSOCIATES, INC.
 (307) 362-5028 1414 ELK ST., ROCK SPRINGS, WY 82901

DRAWN: 7/5/2023 - DEH	SCALE: 1" = 100'
REVISED: N/A	DRG JOB No. 22254
	304b(7)Bv FACILITY

LAYOUT DRAWING 7 OF 7

**PRELIMINARY FACILITY LAYOUT
 LARAMIE ENERGY, LLC
 CURRIER BCU 0993-16-07
 SWNE, SECTION 16, T. 9 S., R. 93 W., 6th P.M.,
 MESA COUNTY, COLORADO**

APPROXIMATE DISTURBANCE AREA 9.0± ACRES
 PROPOSED RECLAMATION AREA: 6.9± ACRES
 INTERIM RECLAMATION DISTURBANCE: 2.1± ACRES



BEFORE DIGGING CALL FOR UTILITY LINE LOCATION

CURRIER BCU 0993-16-07 PAD

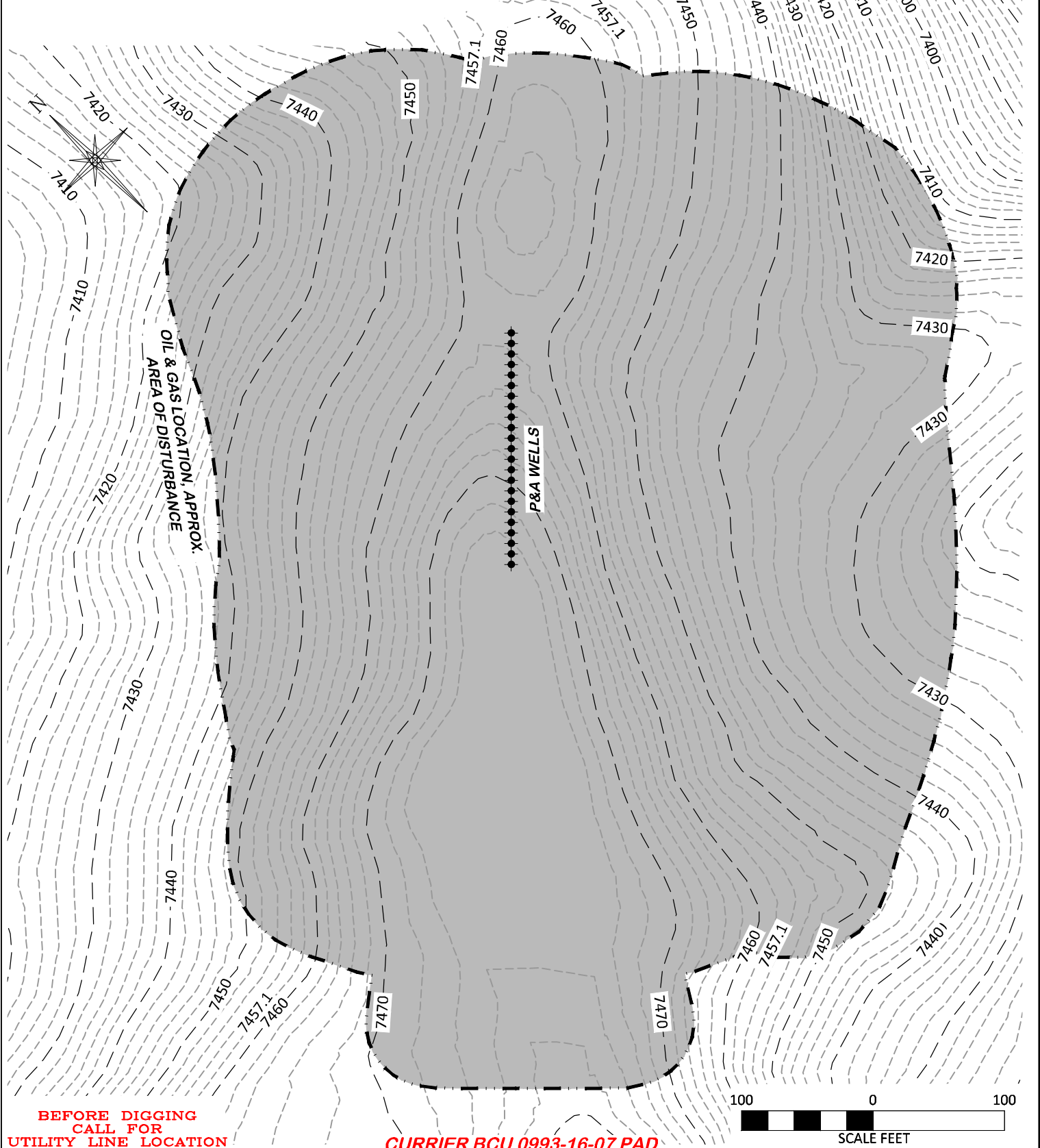
DRG RIFFIN & ASSOCIATES, INC.
 (307) 362-5028 1414 ELK ST., ROCK SPRINGS, WY 82901

DRAWN: 7/5/2023 - DEH	SCALE: 1" = 100'
REVISED: N/A	DRG JOB No. 22254
304c(16) RECLAMATION	

INTERIM RECLAMATION PLAN

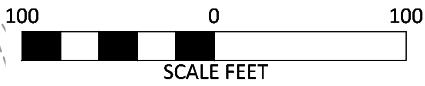
PROPOSED INTERIM RECLAMATION LARAMIE ENERGY, LLC
CURRIER BCU 0993-16-07
SWNE, SECTION 16, T. 9 S., R. 93 W., 6th P.M., MESA COUNTY, COLORADO


APPROXIMATE DISTURBANCE AREA 9.0± ACRES
 PROPOSED FINAL RECLAMATION AREA: 9.0± ACRES



**BEFORE DIGGING
 CALL FOR
 UTILITY LINE LOCATION**

CURRIER BCU 0993-16-07 PAD



 DRG RIFFIN & ASSOCIATES, INC. (307) 362-5028 1414 ELK ST., ROCK SPRINGS, WY 82901	
DRAWN: 7/5/2023 - DEH	SCALE: 1" = 100'
REVISED: N/A	DRG JOB No. 22254
BLM ABANDON RECLAMATION	

FINAL ABANDONMENT
PROPOSED FINAL ABANDONMENT RECLAMATION
LARAMIE ENERGY, LLC
CURRIER BCU 0993-16-07
SWNE, SECTION 16, T. 9 S., R. 93 W., 6th P.M.,
MESA COUNTY, COLORADO

Aerial Imagery Layout Drawings

Duplicates of Standard Layout Drawings with Aerial Imagery to provide a comprehensive depiction of well pad design in regards to surrounding terrain.

UNGRADED ELEVATION: 7461.2'

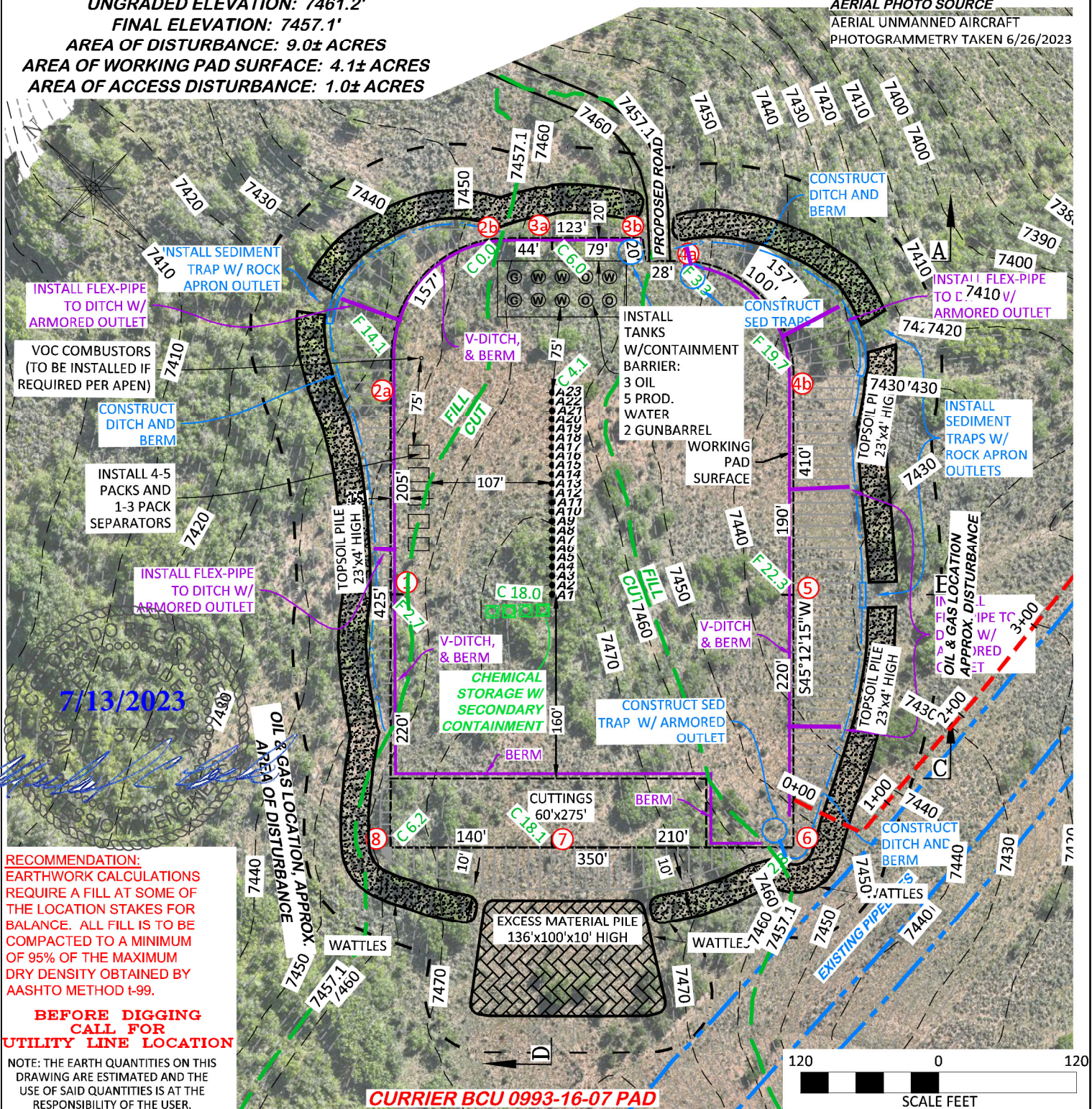
FINAL ELEVATION: 7457.1'

AREA OF DISTURBANCE: 9.0± ACRES

AREA OF WORKING PAD SURFACE: 4.1± ACRES

AREA OF ACCESS DISTURBANCE: 1.0± ACRES

AERIAL PHOTO SOURCE
AERIAL UNMANNED AIRCRAFT
PHOTOGRAMMETRY TAKEN 6/26/2023



7/13/2023

RECOMMENDATION:
EARTHWORK CALCULATIONS REQUIRE A FILL AT SOME OF THE LOCATION STAKES FOR BALANCE. ALL FILL IS TO BE COMPACTED TO A MINIMUM OF 95% OF THE MAXIMUM DRY DENSITY OBTAINED BY AASHTO METHOD T-99.

BEFORE DIGGING CALL FOR UTILITY LINE LOCATION

NOTE: THE EARTH QUANTITIES ON THIS DRAWING ARE ESTIMATED AND THE USE OF SAID QUANTITIES IS AT THE RESPONSIBILITY OF THE USER.

CURRIER BCU 0993-16-07 PAD

ESTIMATED EARTHWORK BANK					ESTIMATED EARTHWORK LOOSE (10% SWELL)				
ITEM	TOPSOIL	CUT	FILL	EXCESS	ITEM	TOPSOIL	CUT	FILL	EXCESS
PAD	4,063 BCY	35,757 BCY	36,267 BCY	(-510 BCY)	PAD	4,469 BCY	39,333 LCY	36,267 LCY	3,066 LCY
PIT		NONE		NONE	PIT		NONE		NONE
TOTALS	4,063 BCY	35,757 BCY	36,267 BCY	(-510 BCY)	TOTALS	4,469 BCY	39,333 LCY	36,267 LCY	3,066 LCY

LAYOUT DRAWING 1 OF 7

DRG RIFFIN & ASSOCIATES, INC.
 (307) 362-5028 1414 ELK ST., ROCK SPRINGS, WY 82901

DRAWN: 7/5/2023 - DEH **SCALE:** 1" = 120'

REVISED: N/A **DRG JOB No.** 22254

304b(7)Bi CONST ARL

CONSTRUCTION LAYOUT DRAWING
ESTIMATED EARTHWORK
LARAMIE ENERGY, LLC
CURRIER BCU 0993-16-07
SWNE, SECTION 16, T.9 S., R.93 W., 6th P.M.,
MESA COUNTY, COLORADO

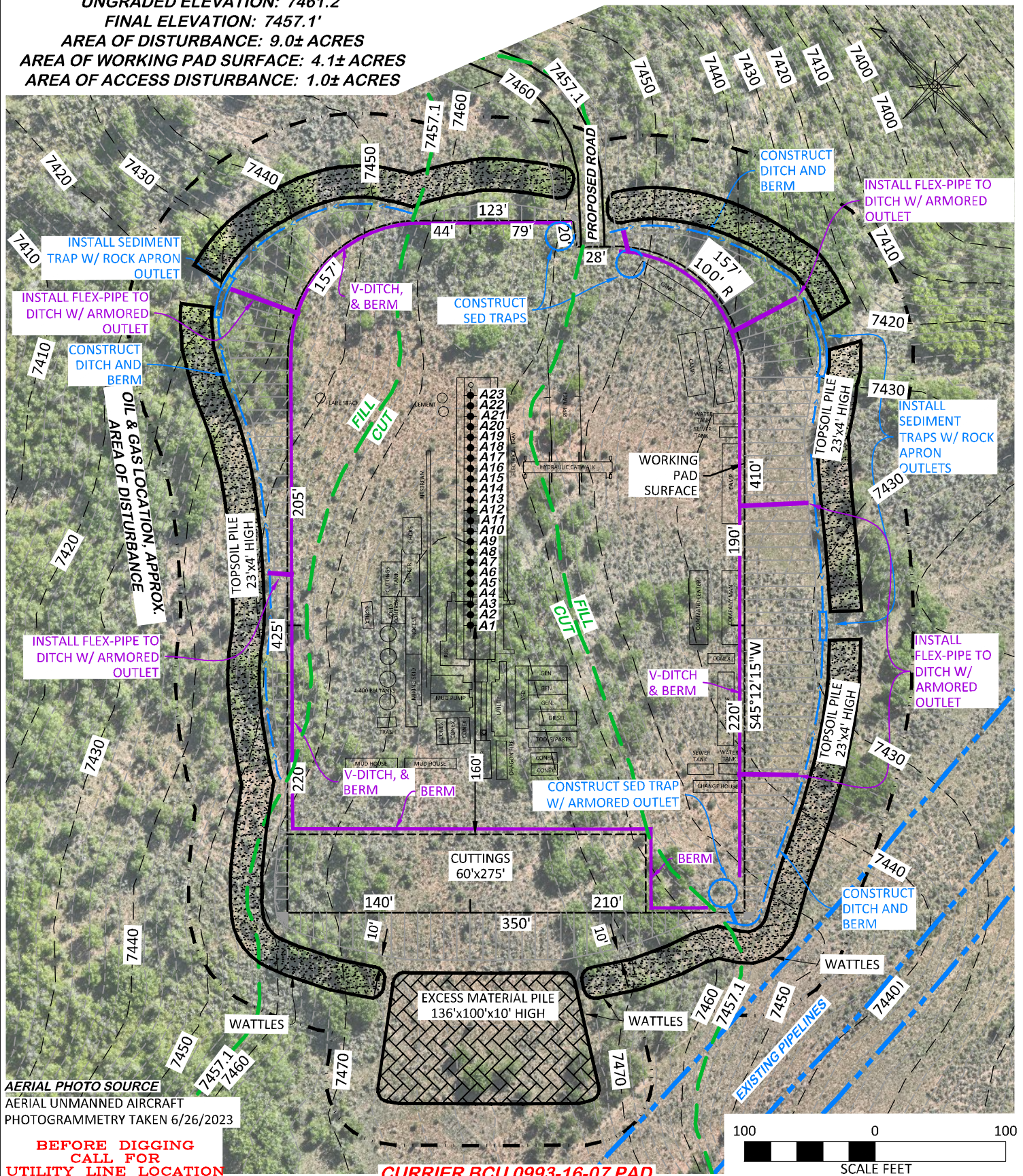
UNGRADED ELEVATION: 7461.2'

FINAL ELEVATION: 7457.1'

AREA OF DISTURBANCE: 9.0± ACRES

AREA OF WORKING PAD SURFACE: 4.1± ACRES

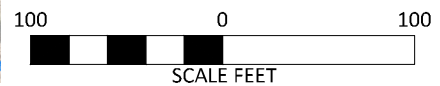
AREA OF ACCESS DISTURBANCE: 1.0± ACRES



AERIAL PHOTO SOURCE
AERIAL UNMANNED AIRCRAFT
PHOTOGRAMMETRY TAKEN 6/26/2023

**BEFORE DIGGING
CALL FOR
UTILITY LINE LOCATION**

CURRIER BCU 0993-16-07 PAD

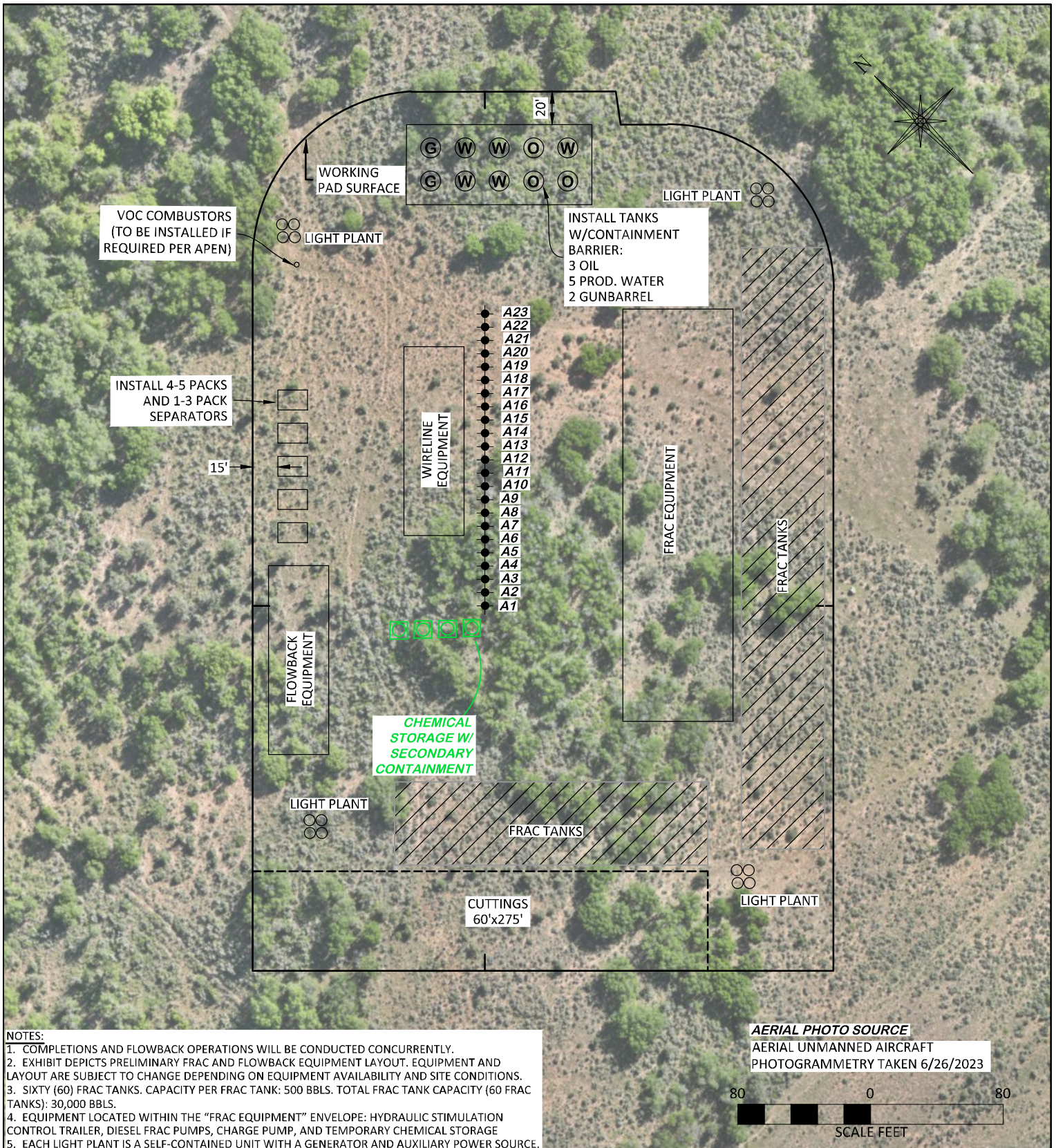


DRG RIFFIN & ASSOCIATES, INC.
 (307) 362-5028 1414 ELK ST., ROCK SPRINGS, WY 82901

DRAWN: 7/5/2023 - DEH	SCALE: 1" = 100'
REVISED: N/A	DRG JOB No. 22254
	304b(7)Bii RIG ARL

LAYOUT DRAWING 3 OF 7

**PRELIMINARY RIG LAYOUT
 LARAMIE ENERGY, LLC
 CURRIER BCU 0993-16-07
 SWNE, SECTION 16, T. 9 S., R. 93 W., 6th P.M.,
 MESA COUNTY, COLORADO**



- NOTES:**
1. COMPLETIONS AND FLOWBACK OPERATIONS WILL BE CONDUCTED CONCURRENTLY.
 2. EXHIBIT DEPICTS PRELIMINARY FRAC AND FLOWBACK EQUIPMENT LAYOUT. EQUIPMENT AND LAYOUT ARE SUBJECT TO CHANGE DEPENDING ON EQUIPMENT AVAILABILITY AND SITE CONDITIONS.
 3. SIXTY (60) FRAC TANKS. CAPACITY PER FRAC TANK: 500 BBLs. TOTAL FRAC TANK CAPACITY (60 FRAC TANKS): 30,000 BBLs.
 4. EQUIPMENT LOCATED WITHIN THE "FRAC EQUIPMENT" ENVELOPE: HYDRAULIC STIMULATION CONTROL TRAILER, DIESEL FRAC PUMPS, CHARGE PUMP, AND TEMPORARY CHEMICAL STORAGE
 5. EACH LIGHT PLANT IS A SELF-CONTAINED UNIT WITH A GENERATOR AND AUXILIARY POWER SOURCE.
 6. ACTUAL WATER LINE AND WATER PUMP PLACEMENT DEPENDENT ON PRE-COMPLETION ALIGNMENT OF FRAC TANKS.
 7. OPERATOR WILL UTILIZE HEAT PUMPS FOR WINTER OPERATIONS BASED ON LOCATION SPACING.
 8. FLOWBACK SUPPORT TRAILER IS LOCATED WITHIN "FLOWBACK SEPARATORS" ENVELOPE.
 9. PLEASE REFER TO THE CONSTRUCTION LAYOUT DRAWING FOR STORMWATER CONTROL MEASURES.

AERIAL PHOTO SOURCE
 AERIAL UNMANNED AIRCRAFT
 PHOTOGRAMMETRY TAKEN 6/26/2023



CURRIER BCU 0993-16-07 PAD

LAYOUT DRAWING 5 OF 7

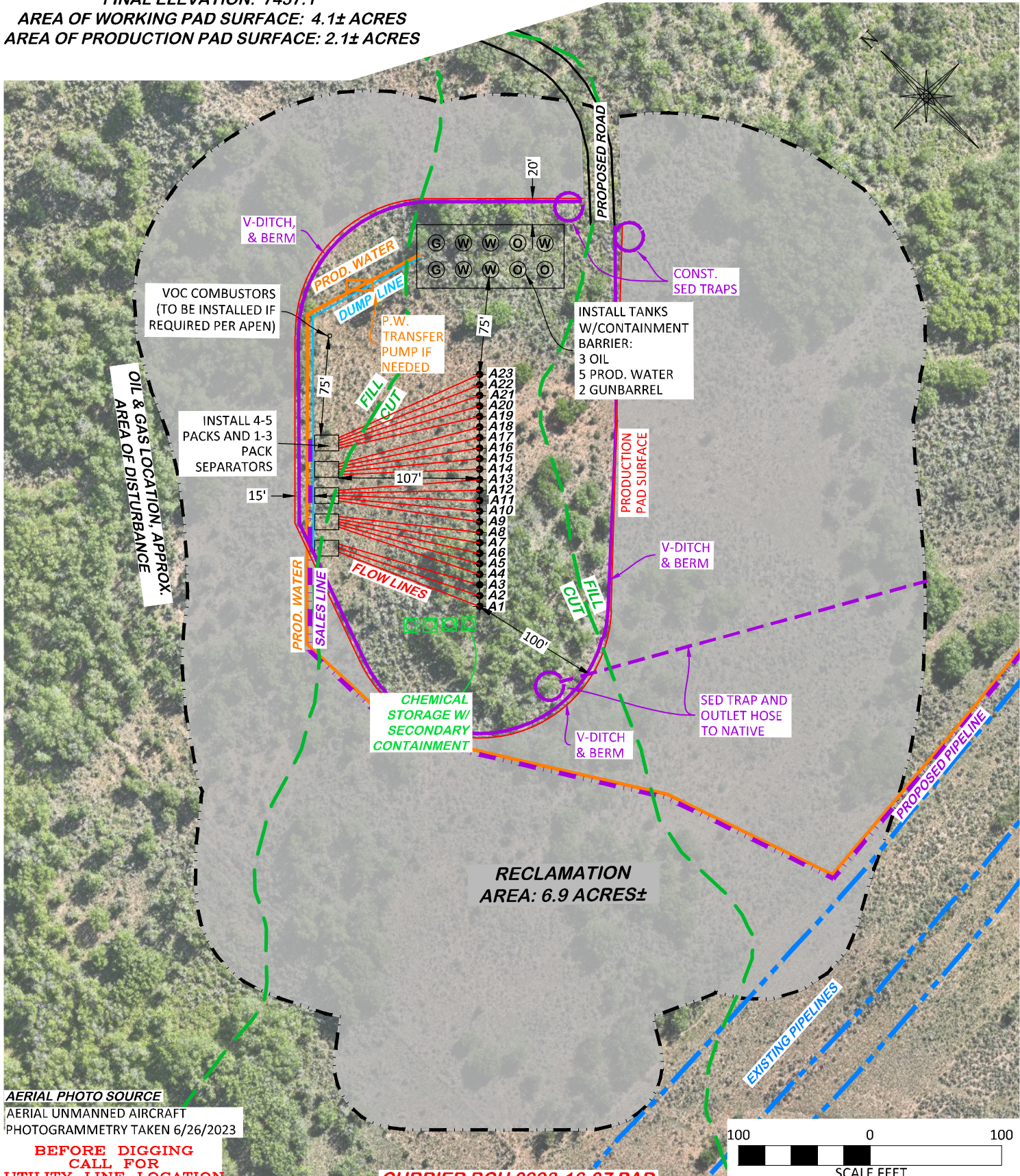
**PRELIMINARY WELL COMPLETIONS AND
 STIMULATION LAYOUT
 LARAMIE ENERGY, LLC
 CURRIER BCU 0993-16-07
 SWNE, SECTION 16, T.9 S., R.93 W., 6th P.M.,
 MESA COUNTY, COLORADO**

DRG RIFFIN & ASSOCIATES, INC.
 (307) 362-5028 1414 ELK ST., ROCK SPRINGS, WY 82901

DRAWN: 6/28/2023 - DEH	SCALE: 1" = 80'
REVISED: N/A	DRG JOB No. 22254
	304b(7)Biii COMP ARL

FINAL ELEVATION: 7457.1'

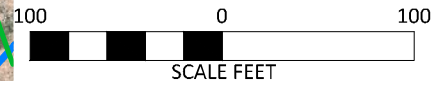
AREA OF WORKING PAD SURFACE: 4.1± ACRES
AREA OF PRODUCTION PAD SURFACE: 2.1± ACRES



AERIAL PHOTO SOURCE
AERIAL UNMANNED AIRCRAFT
PHOTOGRAMMETRY TAKEN 6/26/2023

**BEFORE DIGGING
CALL FOR
UTILITY LINE LOCATION**

CURRIER BCU 0993-16-07 PAD



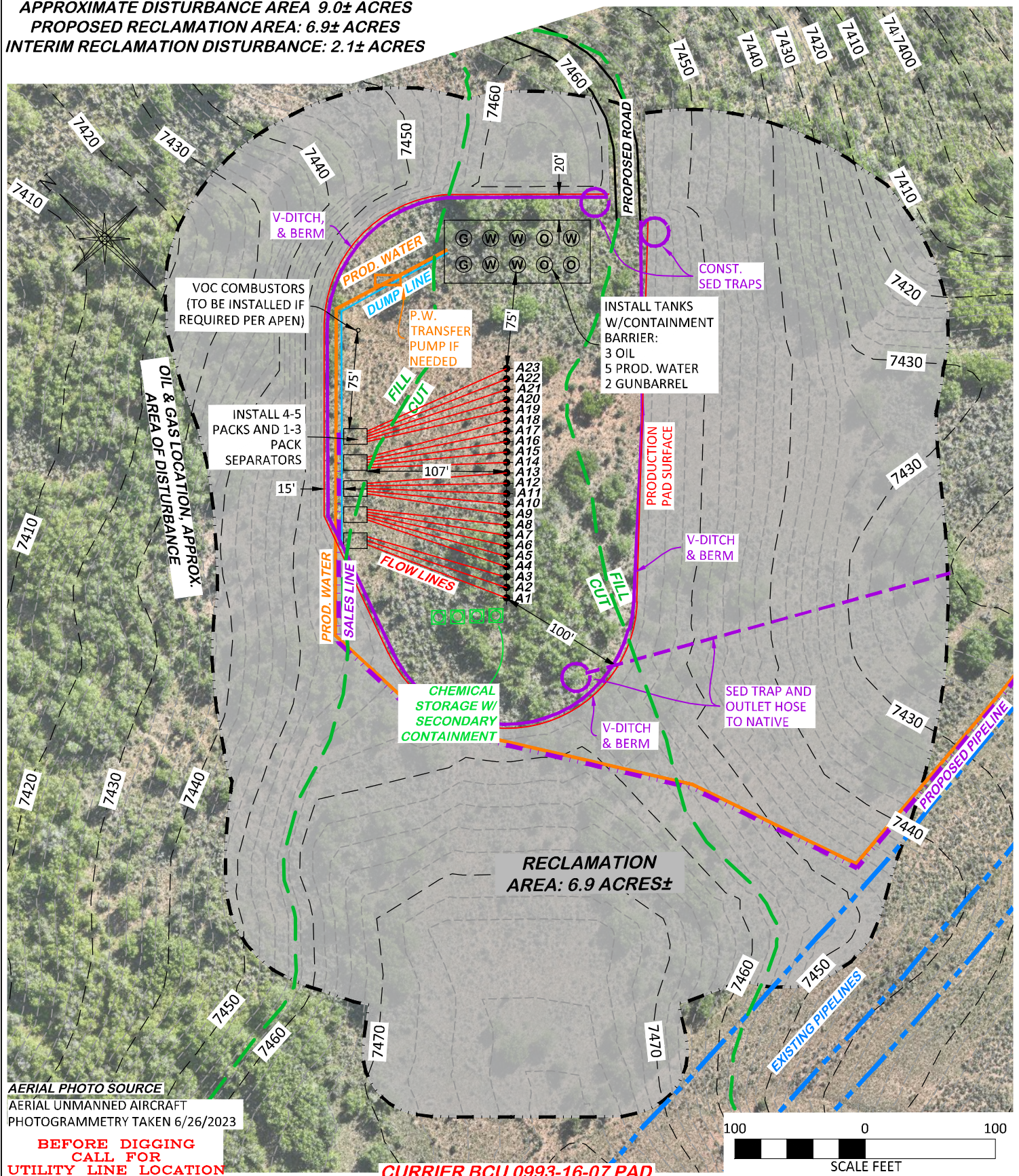
DRG RIFFIN & ASSOCIATES, INC.
 (307) 362-5028 1414 ELK ST., ROCK SPRINGS, WY 82901

DRAWN: 7/5/2023 - DEH	SCALE: 1" = 100'
REVISED: N/A	DRG JOB No. 22254
304b(7)Bv FACILITY ARL	

LAYOUT DRAWING 7 OF 7

**PRELIMINARY FACILITY LAYOUT
 LARAMIE ENERGY, LLC
 CURRIER BCU 0993-16-07
 SWNE, SECTION 16, T.9 S., R.93 W., 6th P.M.,
 MESA COUNTY, COLORADO**


APPROXIMATE DISTURBANCE AREA 9.0± ACRES
PROPOSED RECLAMATION AREA: 6.9± ACRES
INTERIM RECLAMATION DISTURBANCE: 2.1± ACRES



AERIAL PHOTO SOURCE
 AERIAL UNMANNED AIRCRAFT
 PHOTOGRAMMETRY TAKEN 6/26/2023

**BEFORE DIGGING
 CALL FOR
 UTILITY LINE LOCATION**

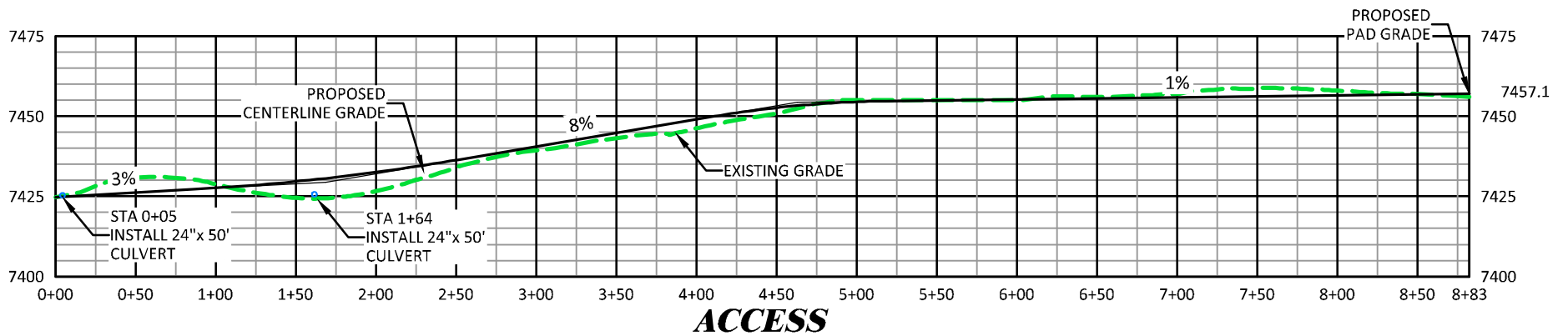
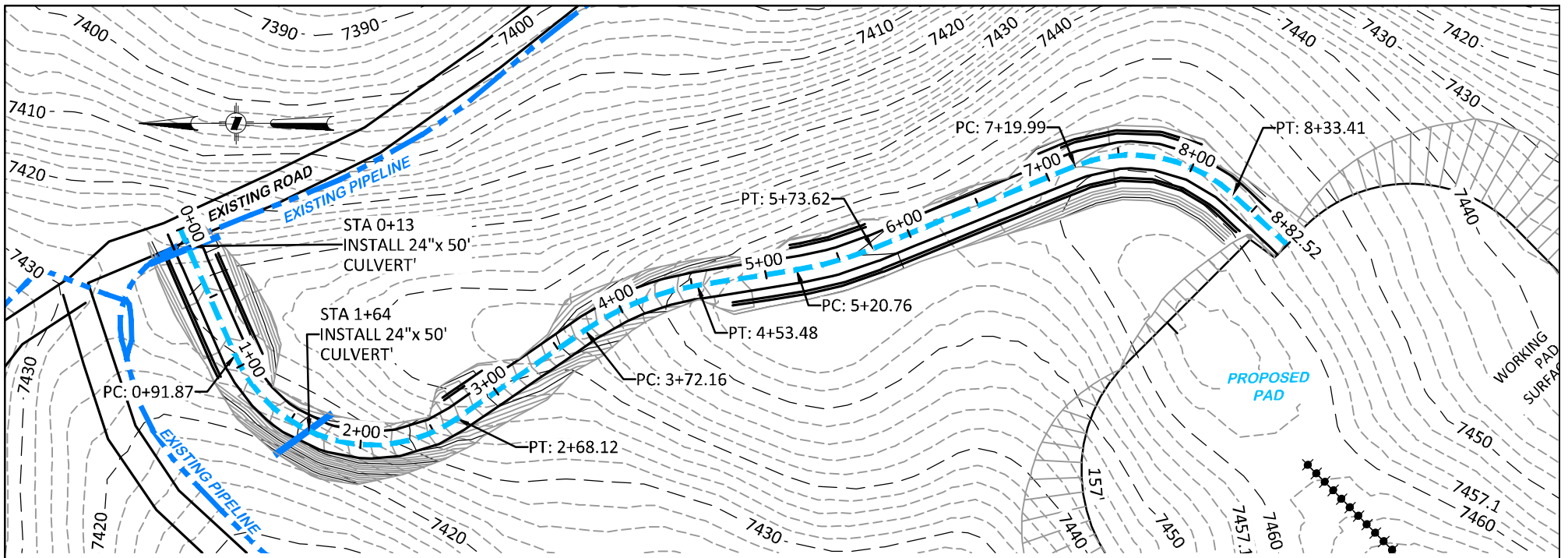
CURRIER BCU 0993-16-07 PAD

 DRG RIFFIN & ASSOCIATES, INC. (307) 362-5028 1414 ELK ST., ROCK SPRINGS, WY 82901	
DRAWN: 7/5/2023 - DEH	SCALE: 1" = 100'
REVISED: N/A	DRG JOB No. 22254
304c(16) RECLAMATION ARL	

INTERIM RECLAMATION PLAN
PROPOSED INTERIM RECLAMATION
LARAMIE ENERGY, LLC
CURRIER BCU 0993-16-07
SWNE, SECTION 16, T. 9 S., R. 93 W., 6th P.M.,
MESA COUNTY, COLORADO

Site-Specific Access Road Design

Access Road to be constructed with Design Specifications.



CURRIER BCU 0993-16-07 PAD

ACCESS PLAN AND PROFILE



DRG RIFFIN & ASSOCIATES, INC.

(307) 362-5028

1414 ELK ST., ROCK SPRINGS, WY 82901

ESTIMATED EARTHWORK

CUT	FILL	EXCESS
1,292 CY	1,198 CY	94 CY

DRAWN: 7/5/2023 - DEH

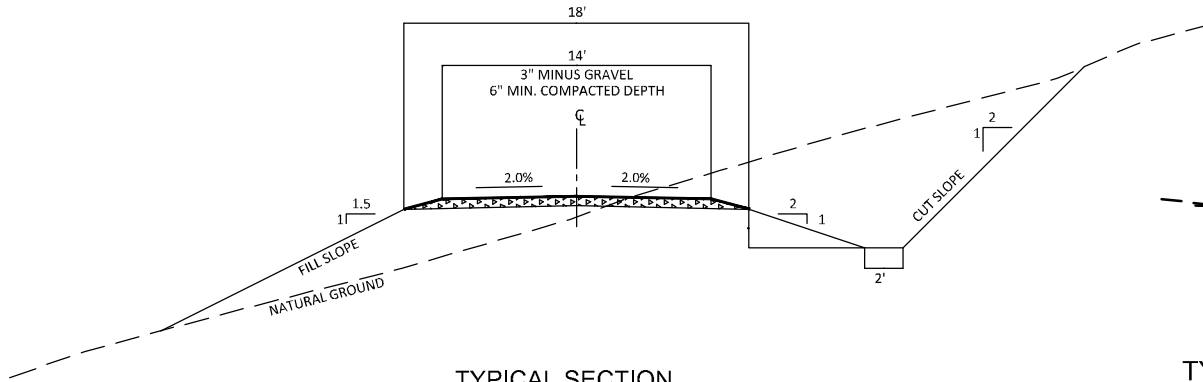
SCALE: H - 1" = 100' V - 1" = 50'

REVISED: N/A

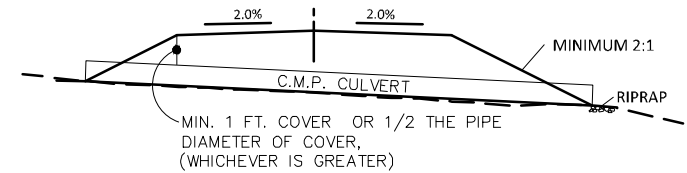
DRG JOB No. 22254

304b(7)F ROAD PP

**LARAMIE ENERGY, LLC
 CURRIER BCU 0993-16-07
 SWNE, SECTION 16, T. 9 S., R. 93 W., 6th P.M.,
 MESA COUNTY, COLORADO**




TYPICAL SECTION



TYPICAL EMBANKMENT CULVERT DETAIL

CURRIER BCU 0993-16-07 PAD

 DRG RIFFIN & ASSOCIATES, INC. (307) 362-5028 1414 ELK ST., ROCK SPRINGS, WY 82901		ACCESS CONSTRUCTION DETAILS	
		LARAMIE ENERGY, LLC CURRIER BCU 0993-16-07 SWNE, SECTION 16, T. 9 S., R. 93 W., 6th P.M., MESA COUNTY, COLORADO	
DRAWN: 7/5/2023 - DEH	NOT TO SCALE		
REVISED: N/A	DRG JOB No. 22254		
	304b(7)F ROAD PP (2)		