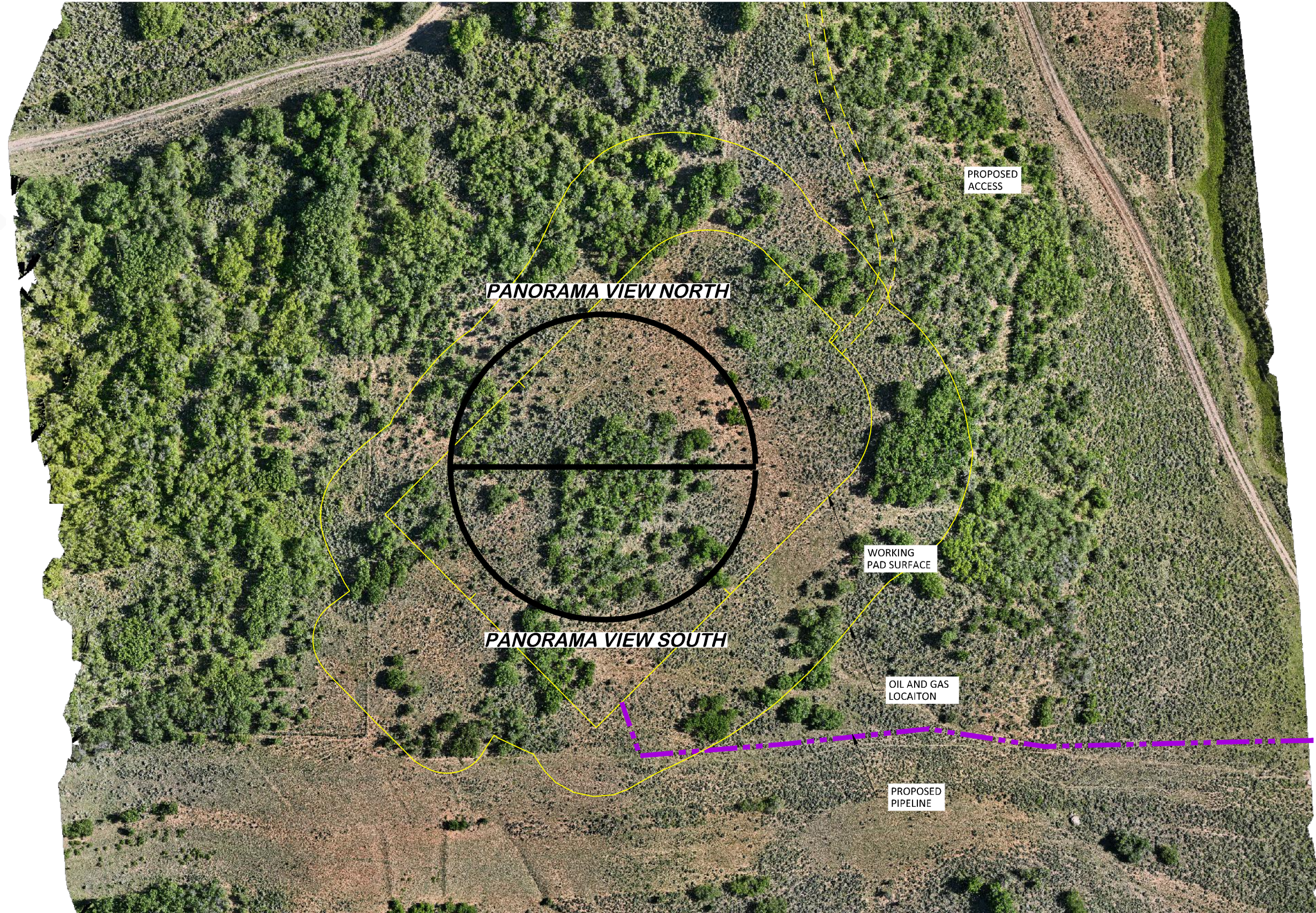
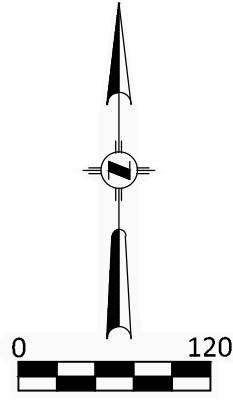


AERIAL LOCATION PHOTO



AERIAL PHOTO SOURCE
 AERIAL UNMANNED AIRCRAFT
 PHOTOGRAMMETRY TAKEN 6/26/2023

PAD LOCATION:

LAT: N 39.277789
 LONG: W 107.773701

CURRIER BCU 0993-16-07 PAD



DRAWN: 7/5/2023 - DEH
 REVISED: N/A

SCALE: 1" = 120'
 DRG JOB No. 22254
 304b(4) LOC PIC (1)

LOCATION PICTURES 1 OF 4

LARAMIE ENERGY, LLC
CURRIER BCU 0993-16-07
SWNE, SECTION 16, T. 9 S., R. 93 W., 6th P.M.,
MESA COUNTY, COLORADO

LOCATION PHOTOS
6/7/2023



W N E

LOCATION AREA PANORAMA LOOKING NORTH



E S W

LOCATION AREA PANORAMA LOOKING SOUTH

CURRIER BCU 0993-16-07 PAD

LOCATION PICTURES 1 OF 4

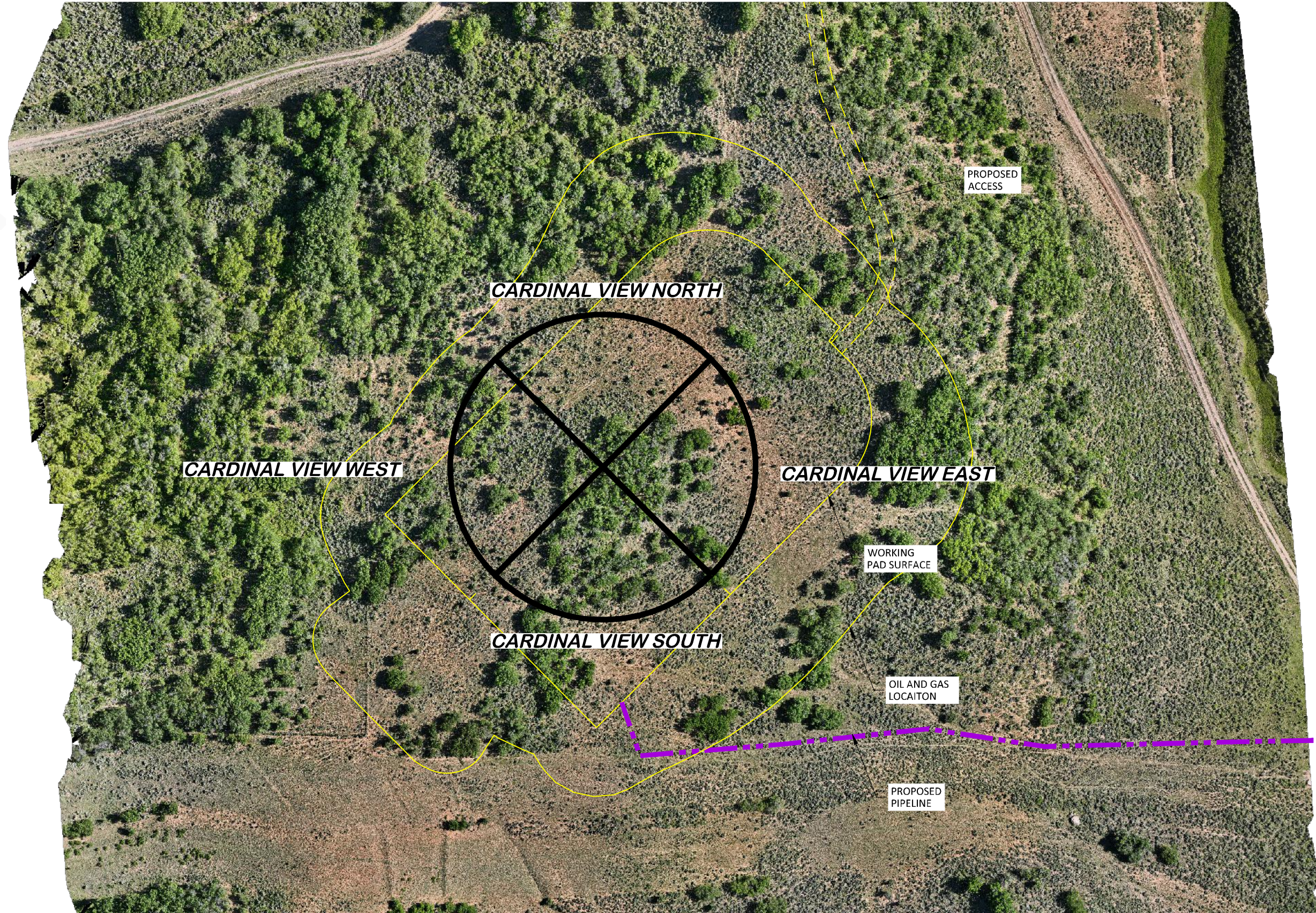
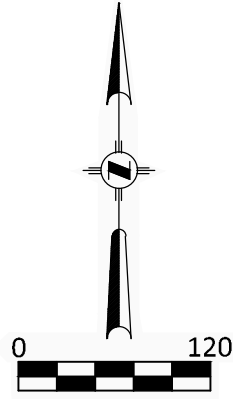
LARAMIE ENERGY, LLC
CURRIER BCU 0993-16-07
SWNE, SECTION 16, T. 9 S., R. 93 W., 6th P.M.,
MESA COUNTY, COLORADO

DRG **RIFFIN & ASSOCIATES, INC.**
1414 ELK ST., ROCK SPRINGS, WY 82901
(307) 962-5028

DRAWN: 7/5/2023 - DEH
REVISION: N/A

SCALE: NOT TO SCALE
DRG JOB No. 22254
304b(4) LOC PIC (2)

AERIAL LOCATION PHOTO

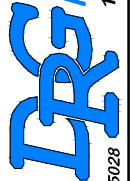


AERIAL PHOTO SOURCE
 AERIAL UNMANNED AIRCRAFT
 PHOTOGRAMMETRY TAKEN 6/26/2023

PAD LOCATION:
 LAT: N 39.277789
 LONG: W 107.773701

CURRIER BCU 0993-16-07 PAD

LOCATION PICTURES 3 OF 4
LARAMIE ENERGY, LLC
CURRIER BCU 0993-16-07
SWNE, SECTION 16, T. 9 S., R. 93 W., 6th P.M.,
MESA COUNTY, COLORADO

 (307) 962-5028 1414 ELK ST., ROCK SPRINGS, WY 82901	DRAWN: 7/5/2023 - DEH	SCALE: 1" = 120'
	REVISED: N/A	DRG JOB No. 22254
304b(4) LOC PIC (3)		

CARDINAL LOCATION PHOTOS



WELL LOCATION LOOKING NORTH
6/7/2023



WELL LOCATION LOOKING SOUTH
6/7/2023



WELL LOCATION LOOKING EAST
6/7/2023



WELL LOCATION LOOKING WEST
6/7/2023

CURRIER BCU 0993-16-07 PAD

LOCATION PICTURES 4 OF 4

LARAMIE ENERGY, LLC
CURRIER BCU 0993-16-07
SWNE, SECTION 16, T. 9 S., R. 93 W., 6th P.M.,
MESA COUNTY, COLORADO

DRG **RIFFIN & ASSOCIATES, INC.**
1414 ELK ST., ROCK SPRINGS, WY 82901

DRAWN: 7/5/2023 - DEH
REVISED: N/A

SCALE: NOT TO SCALE
DRG JOB No. 22254
304b(4) LOC PIC (4)