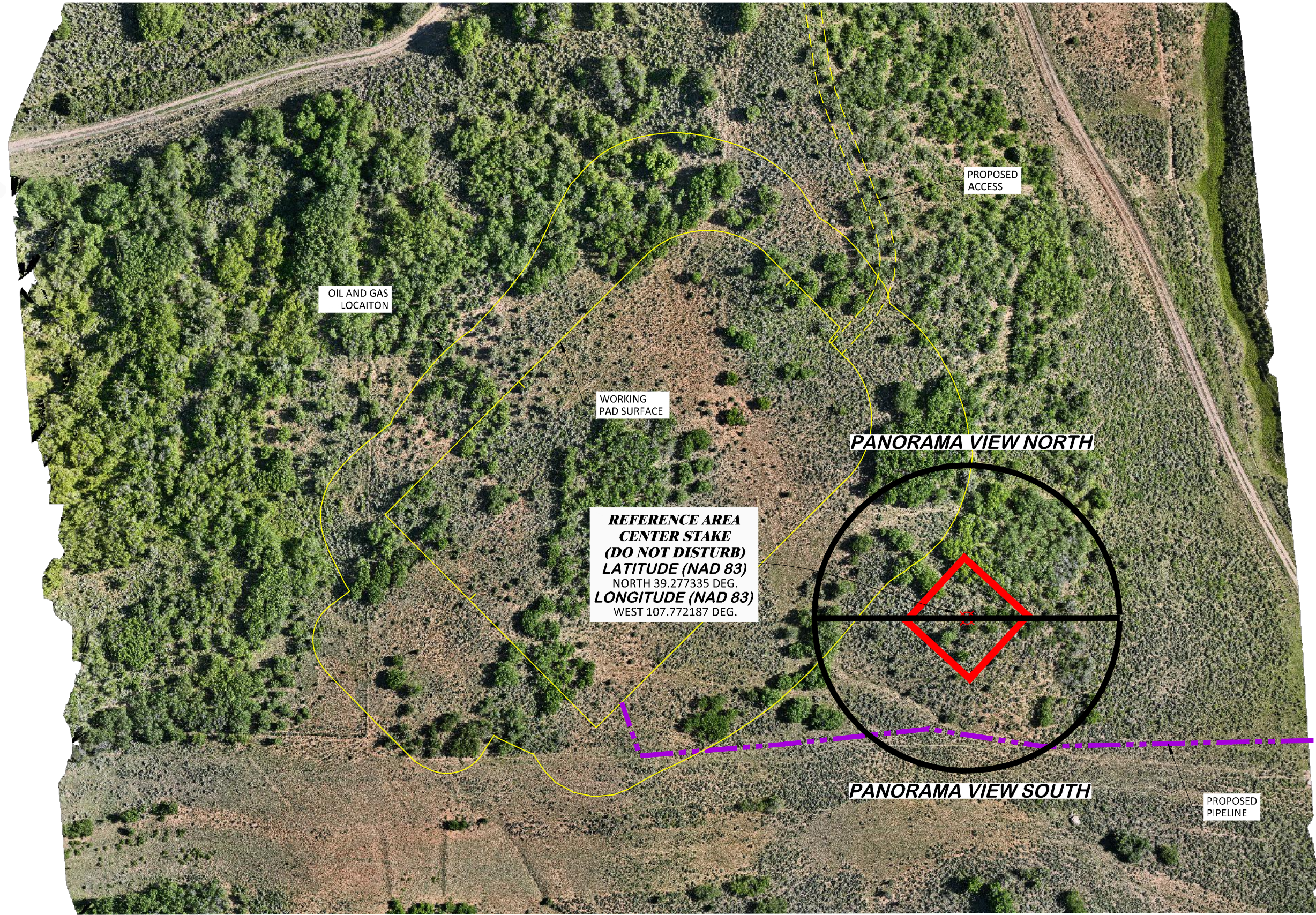
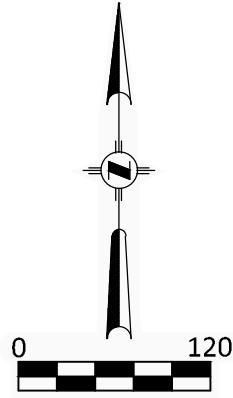


AERIAL REFERENCE PHOTO



AERIAL PHOTO SOURCE
 AERIAL UNMANNED AIRCRAFT
 PHOTOGRAMMETRY TAKEN 6/26/2023

CURRIER BCU 0993-16-07 PAD

REFERENCE AREA PHOTOS 1 OF 4

LARAMIE ENERGY, LLC
CURRIER BCU 0993-16-07
SWNE, SECTION 16, T. 9 S., R. 93 W., 6th P.M.,
MESA COUNTY, COLORADO

DRG RIFFIN & ASSOCIATES, INC.
 1414 ELK ST., ROCK SPRINGS, WY 82901

DRAWN: 7/5/2023 - DEH SCALE: 1" = 120'

REVISED: N/A DRG JOB No. 22254

304b(9)(B) REF PHOTO (1)

LOCATION PHOTOS
6/7/2023



N
LOCATION AREA PANORAMA LOOKING NORTH



E **S** **W**
LOCATION AREA PANORAMA LOOKING SOUTH

CURRIER BCU 0993-16-07 PAD

REFERENCE AREA PHOTOS 1 OF 4

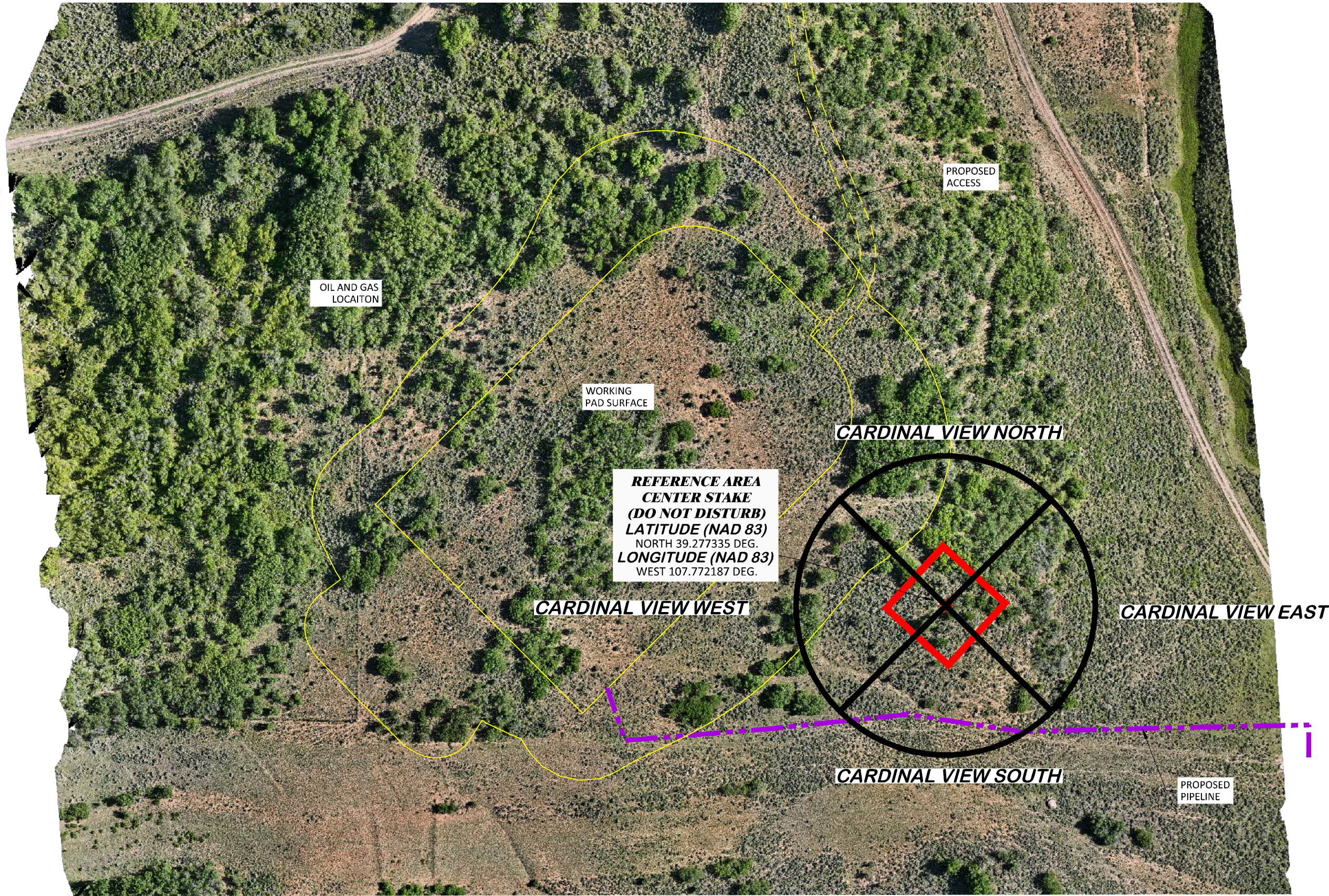
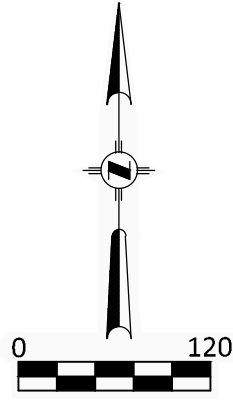
DRG **RIFFIN & ASSOCIATES, INC.**
1414 ELK ST., ROCK SPRINGS, WY 82901
(307) 962-5028

DRAWN: 7/5/2023 - DEH
REVISED: N/A

SCALE: NOT TO SCALE
DRG JOB No. 22254
304b(9)Bii REF PHOTO (2)

LARAMIE ENERGY, LLC
CURRIER BCU 0993-16-07
SWNE, SECTION 16, T. 9 S., R. 93 W., 6th P.M.,
MESA COUNTY, COLORADO

AERIAL REFERENCE PHOTO



**REFERENCE AREA
CENTER STAKE
(DO NOT DISTURB)
LATITUDE (NAD 83)
NORTH 39.277335 DEG.
LONGITUDE (NAD 83)
WEST 107.772187 DEG.**

CURRIER BCU 0993-16-07 PAD

REFERENCE AREA PHOTOS 3 OF 4
LARAMIE ENERGY, LLC
CURRIER BCU 0993-16-07
SWNE, SECTION 16, T. 9 S., R. 93 W., 6th P.M.,
MESA COUNTY, COLORADO

 (307) 962-5028 DRAWN: 7/5/2023 - DEH REVISED: N/A	SCALE: 1" = 120' DRG JOB No. 22254 304b(9)Bii REF PHOTO (3)
	1414 ELK ST., ROCK SPRINGS, WY 82901

AERIAL PHOTO SOURCE
AERIAL UNMANNED AIRCRAFT
PHOTOGRAMMETRY TAKEN 6/26/2023

CARDINAL REFERENCE AREA PHOTOS



WELL LOCATION LOOKING NORTH
6/7/2023



WELL LOCATION LOOKING SOUTH
6/7/2023



WELL LOCATION LOOKING EAST
6/7/2023



WELL LOCATION LOOKING WEST
6/7/2023

CURRIER BCU 0993-16-07 PAD

REFERENCE AREA PHOTOS 4 OF 4

DRG RIFFIN & ASSOCIATES, INC.
1414 ELK ST., ROCK SPRINGS, WY 82901
(307) 962-5028

DRAWN: 7/5/2023 - DEH
REVISED: N/A

SCALE: NOT TO SCALE
DRG JOB No. 22254
304b(9)Bii REF PHOTO (4)

LARAMIE ENERGY, LLC
CURRIER BCU 0993-16-07
SWNE, SECTION 16, T. 9 S., R. 93 W., 6th P.M.,
MESA COUNTY, COLORADO