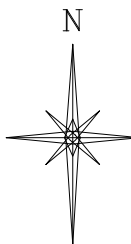


UNGRADED ELEVATION: 7461.2'  
 FINAL ELEVATION: 7457.1'  
 AREA OF DISTURBANCE: 9.0± ACRES  
 AREA OF WORKING PAD SURFACE: 4.1± ACRES

**CURRIER BCU 0993-16-07 PAD**

LOCATION DRAWING FEATURES 304b(7)A	
FEATURE	DISTANCE
i BUILDING	S 2901'
ii BUILDING UNITS	S 3052'
iii PUBLICLY MAINTAINED ROADS AND TRAILS	S 2690'
iv FENCES	W 18'
v ABOVE GROUND UTILITIES	SE 1950'
vi RAILROADS	N 5280'
vii PIPELINES	S 48'
viii MINES	NE 5280'
ix OIL AND GAS WELLS AND PRODUCTION FACILITIES	N 889'
x INJECTION WELLS	NE 5280'
xi PLUGGED OIL AND GAS WELLS	SW 5280'
xii KNOWN WATER WELLS	SW 2891'
xiii KNOWN SEWERS WITH MANHOLES	W 5280'

N

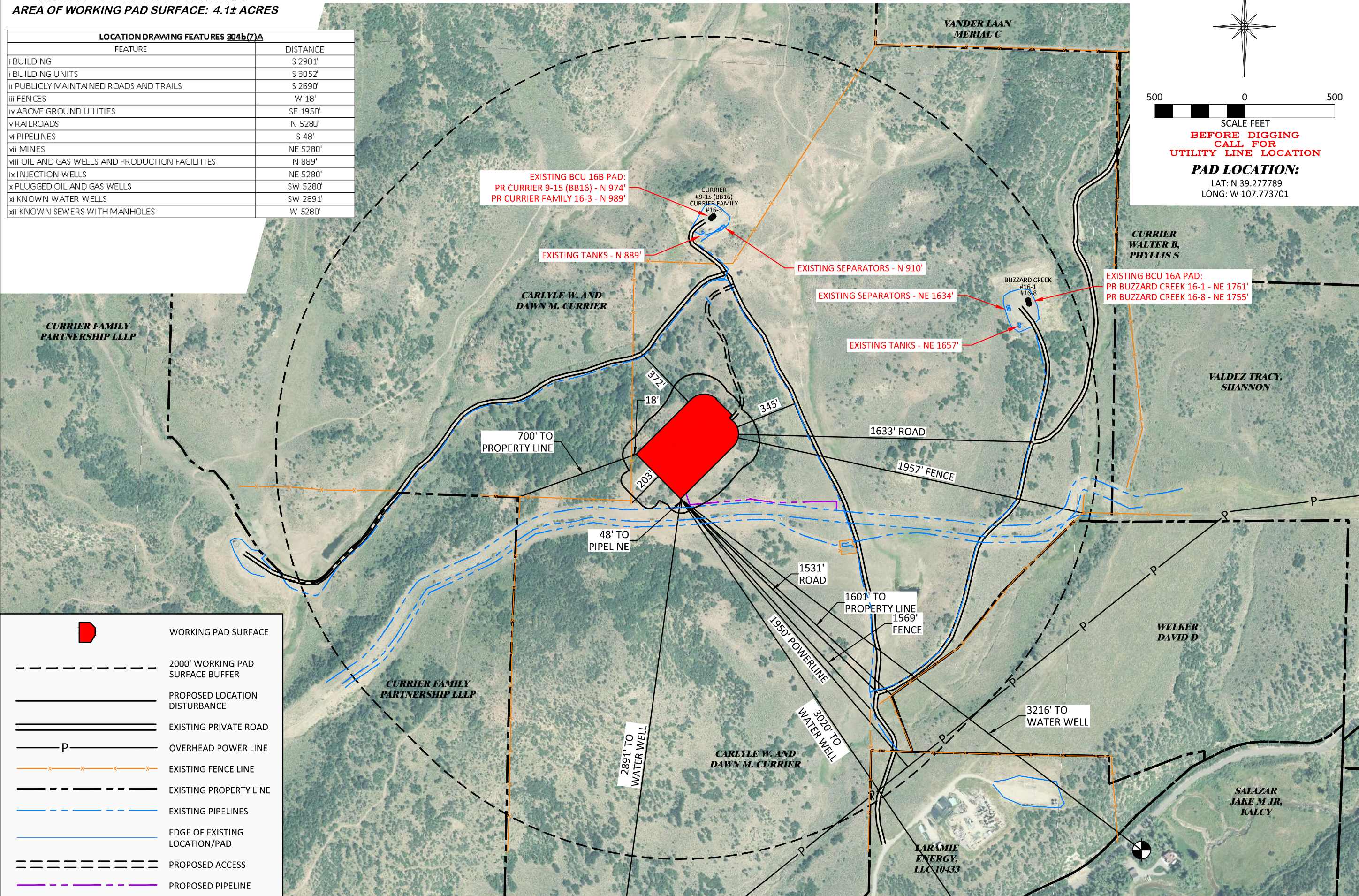


500 0 500

SCALE FEET


**BEFORE DIGGING  
CALL FOR  
UTILITY LINE LOCATION**

**PAD LOCATION:**  
 LAT: N 39.277789  
 LONG: W 107.773701



AERIAL LOCATION DRAWING

**LARAMIE ENERGY, LLC**  
**CURRIER BCU 0993-16-07**  
**SWNE, SECTION 16, T. 9 S., R. 93 W., 6th P.M.,**  
**MESA COUNTY, COLORADO**

  
**DRG RIFFIN & ASSOCIATES, INC.**  
 1414 ELK ST., ROCK SPRINGS, WY 82901  
 (307) 962-5028  
 DRAWN: 7/5/2023 - DEH  
 REVISED: N/A  
 SCALE: 1" = 500'  
 DRG JOB No. 22254  
 304b(7)A LOC AERIAL

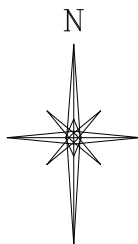
**LARAMIE ENERGY, LLC 10433**  
**LARAMIE ENERGY, LLC 10433**  
**LARAMIE ENERGY, LLC 10433**

UNGRADED ELEVATION: 7461.2'  
 FINAL ELEVATION: 7457.1'  
 AREA OF DISTURBANCE: 9.0± ACRES  
 AREA OF WORKING PAD SURFACE: 4.1± ACRES

**CURRIER BCU 0993-16-07 PAD**

LOCATION DRAWING FEATURES 304b(7)A	
FEATURE	DISTANCE
i BUILDING	S 2901'
ii BUILDING UNITS	S 3052'
iii PUBLICLY MAINTAINED ROADS AND TRAILS	S 2690'
iv FENCES	W 18'
v ABOVE GROUND UTILITIES	SE 1950'
vi RAILROADS	N 5280'
vii PIPELINES	S 48'
viii MINES	NE 5280'
ix OIL AND GAS WELLS AND PRODUCTION FACILITIES	N 889'
x INJECTION WELLS	NE 5280'
xi PLUGGED OIL AND GAS WELLS	SW 5280'
xii KNOWN WATER WELLS	SW 2891'
xiii KNOWN SEWERS WITH MANHOLES	W 5280'

N

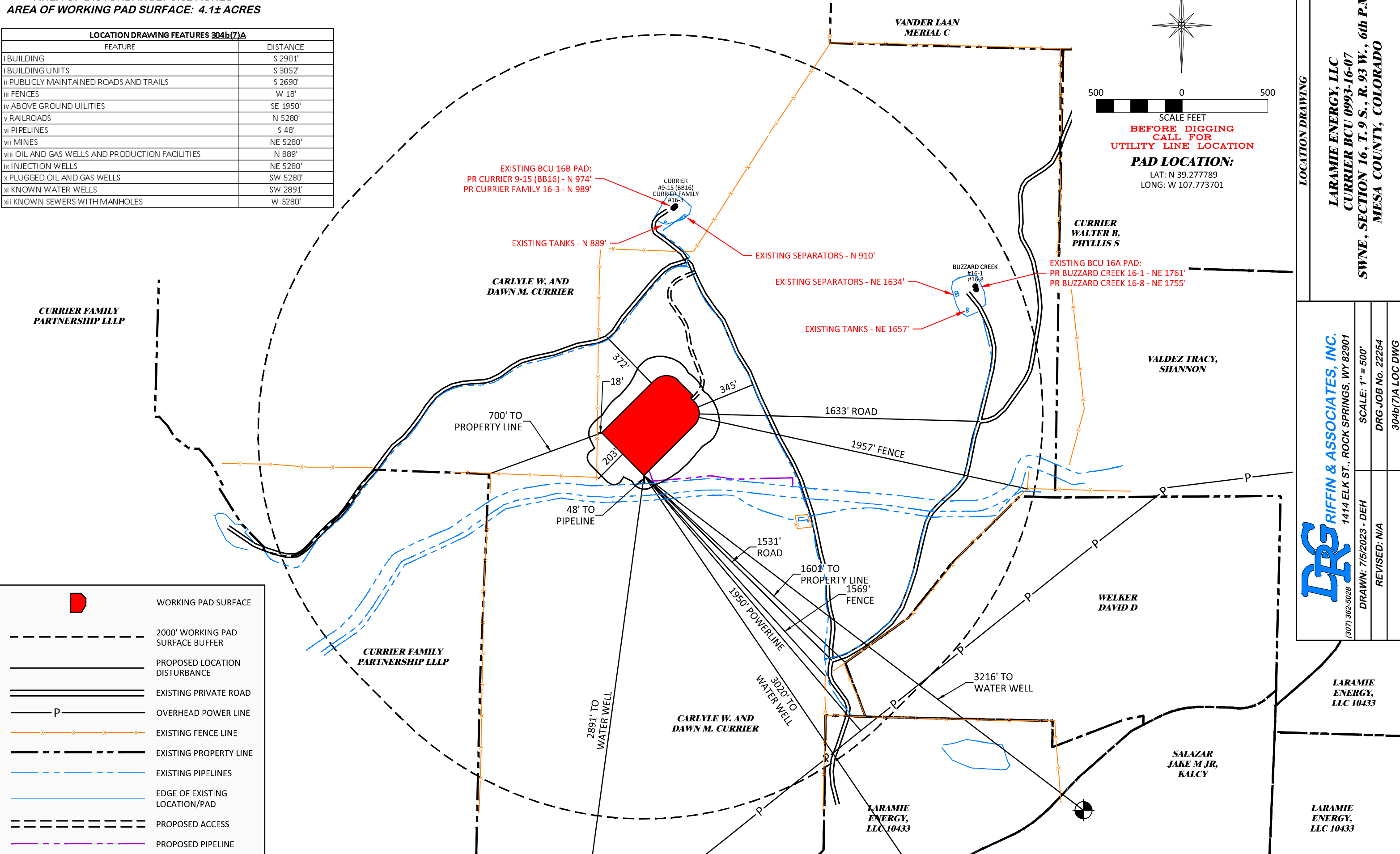



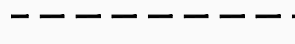
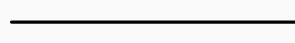
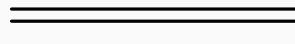

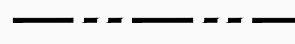
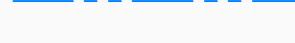



500 0 500

SCALE FEET

**BEFORE DIGGING  
CALL FOR  
UTILITY LINE LOCATION**

**PAD LOCATION:**  
 LAT: N 39.277789  
 LONG: W 107.773701



	WORKING PAD SURFACE
	2000' WORKING PAD SURFACE BUFFER
	PROPOSED LOCATION DISTURBANCE
	EXISTING PRIVATE ROAD
	OVERHEAD POWER LINE
	EXISTING FENCE LINE
	EXISTING PROPERTY LINE
	EXISTING PIPELINES
	EDGE OF EXISTING LOCATION/PAD
	PROPOSED ACCESS
	PROPOSED PIPELINE

**LOCATION DRAWING**  
**LARAMIE ENERGY, LLC**  
**CURRIER BCU 0993-16-07**  
**SWNE, SECTION 16, T. 9 S., R. 93 W., 6th P.M.,**  
**MESA COUNTY, COLORADO**

**DRG RIFFIN & ASSOCIATES, INC.**  
 1414 ELK ST., ROCK SPRINGS, WY 82901  
 (307) 962-5028  
 DRAWN: 7/5/2023 - DEH  
 SCALE: 1" = 500'  
 REVISED: N/A  
 DRG JOB No. 22254  
 304b(7)A LOC DWG

**LARAMIE ENERGY, LLC 10433**  
**LARAMIE ENERGY, LLC 10433**